

we all need



PNA+

APPENDIX B

RURAL STUDY

AREA PROFILES

This project was previously called the Regional and Rural Edition (RRE) to emphasize its focus on regional and rural recreation needs and priorities. This project name was used during the data collection, and community engagement and outreach phases which occurred primarily in 2021. As this report was being completed in 2022, DPR decided to rename the project the Parks Needs Assessment Plus (PNA+) to clarify and better communicate that this project complements and offers new information not previously included in the 2016 Parks Needs Assessment (PNA), such as mapping and analyses related to population vulnerability, environmental benefits, environmental burdens, and priority areas for environmental conservation, environmental restoration, regional recreation, and rural recreation. (Please note that there remains some text and graphic references to the RRE in this document because that was the project name when some components of this study were completed.)

SANTA MONICA MOUNTAINS COASTAL ZONE RURAL STUDY AREA PROFILE

RURAL STUDY AREA ID #13

- » Study Area Description
- » Study Area Demographics
- » Population Vulnerability
- » Rural Recreation and Conservation Sites
- » Rural Recreation Site Access
- » Recreation Opportunity Types
- » Community Engagement Themes
- » Rural Recreation Priority Analysis
- » Rural Recreation Priority Areas
- » Priority Project Types

Note

This profile is not intended to stand alone. For definitions of key terms and a full description of the analysis summarized within please refer to Chapter 5 of the main report as well as Appendix C: Technical Resources.



STUDY AREA DESCRIPTION

PHYSICAL CONTEXT

The Santa Monica Mountains Coastal Zone Study Area is located in the Santa Monica Mountains Regional Study Area. The Study Area spans from the edge of the metropolitan Los Angeles area to the east, to the western border of Los Angeles County to west. The Study Area includes most of the Santa Monica Mountain Range and is bordered on the north by the unincorporated areas of Calabasas, Agoura Hills and Westlake Village and the northern portion of the Santa Monica Mountains. Coastal cities like Malibu and the Pacific Ocean are adjacent to the south. The Study Area encompasses approximately 81 square miles.

STUDY AREA CONSIDERATIONS

The Study Area has major constraints, including natural hazards like wildfire, limited pedestrian and ADA facilities, lack of a centralized public transit service, and limited water supply. It is critical that existing rural communities and biological and natural resources remain protected. The communities here are scenic and desirable. Residents in the Study Area have access to nature and many recreational areas, including beaches and open spaces.

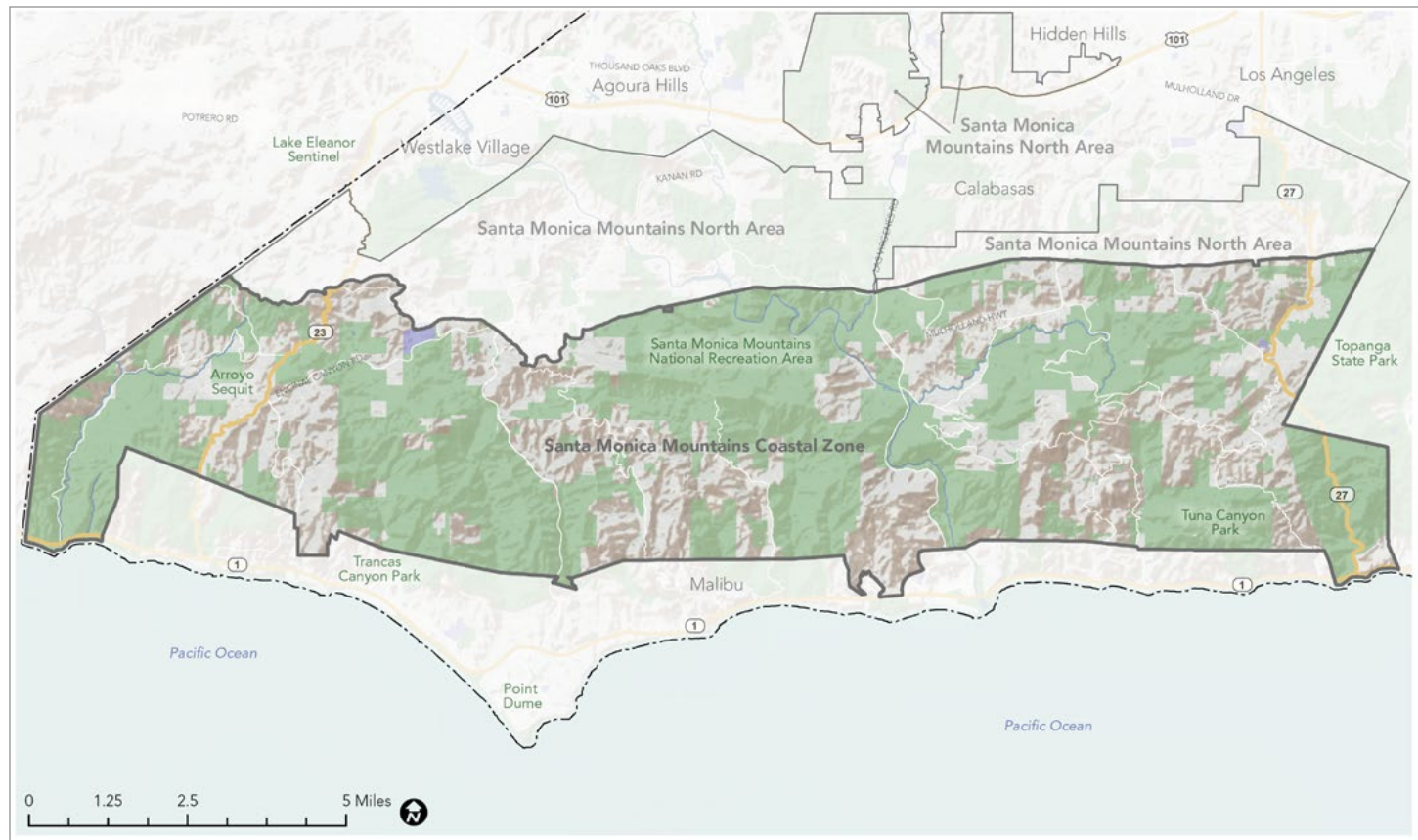
KEY ANALYSIS TAKEAWAYS

- » Transportation barriers is the most prevalent dimension of population vulnerability in the Study Area.
 - » 18% of residents live within walking distance of a rural recreation site.
 - » No rural recreation sites in the Study Area are served by public transit.
- » The majority of rural recreation site area in the Study Area falls under Nature-Based Recreation Area.
- » Study Area residents live in lowest proximity to general recreation facilities (37.1%) and health and fitness facilities (37.1%).
- » This Study Area has access to few recreation opportunity types.

KEY COMMUNITY ENGAGEMENT TAKEAWAYS

- » Distance, safety, limited shade at parks, lack of accessibility, vegetation overgrowth and limited facilities maintenance are identified barriers to park use for residents who live in the Study Area.
- » Residents say they need more outdoor recreation areas, better facilities maintenance and repair, shaded play and seating areas, and protected pedestrian and bike access to parks.
- » Greatest needs are for places to play and bring animals to exercise; gather with friends and family; and to be surrounded by nature.

SANTA MONICA MOUNTAINS COASTAL ZONE RURAL STUDY AREA



Map source: PNA, 2016; US Census, 2019; Esri, 2021; MIG, 2021; LAC GIS, 2021; USGS NHD, 2021
 Note: All Rural Study Area Profile maps in this chapter include and refer to the sources listed here as basemap layers.

STUDY AREA DEMOGRAPHICS

Population, Race, Ethnicity, Gender, Income, Age, and Education Level

Population	
Total	12,018

Race	Percentage
White	84.72%
Black or African American	1.72%
American Indian and Alaska Native	0.33%
Asian	5.57%
Native Hawaiian and Other Pacific Islander	0.1%
Some Other Race	3.25%
Two or More Races	4.3%
Total	100%

Ethnicity	Percentage
Hispanic or Latino	10.58%
Not Hispanic or Latino	89.42%
Total	100%

Income	Percentage
Less than \$25,000	11.27%
\$25,000-\$49,999	9.58%
\$50,000-\$74,999	9.33%
\$75,000-\$99,999	7.9%
\$100,000-\$150,000	21.25%
\$150,000	40.73%
Total	100%

Gender	Percentage
Female	50.52%
Male	49.48%
Total	100%

Age	Percentage
Under 5 years	4%
5 to 9 years	4.87%
10 to 14 years	6.12%
15 to 19 years	9.95%
20 to 29 years	12.17%
30 to 39 years	7.75%
40 to 49 years	13.08%
50 to 59 years	18.78%
60 to 69 years	12.7%
70 to 79 years	3.5%
80+ years	3.77%
Total	100%

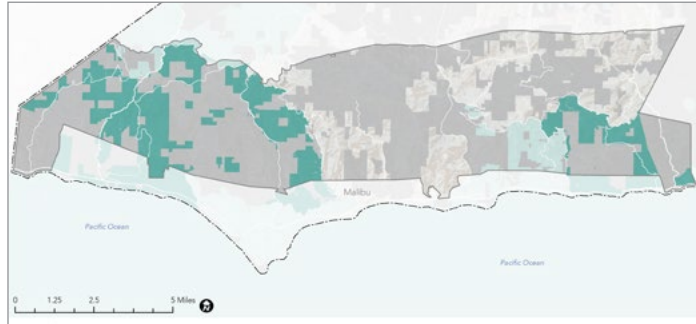
Education Level	Percentage
High School Diploma	10.67%
Some College, No Degree	17.93%
Associates Degree	6.75%
Bachelor's Degree	31.17%
Master's Degree	28.05%
Other	5.47%
Total	100%

Source: 2016 PNA, U.S. Census Bureau, 2014 ACS 5-year Estimate Subject Tables, See Technical Appendix for Census Tracts included in each Study Area.

Note: At the time that this report was prepared, 2020 Census results were not available.

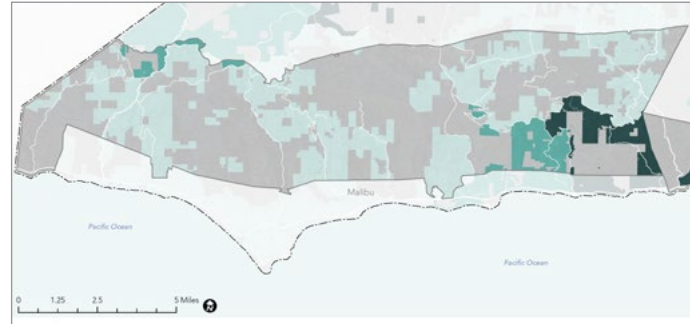
POPULATION VULNERABILITY DIMENSIONS

Social Barriers Dimension



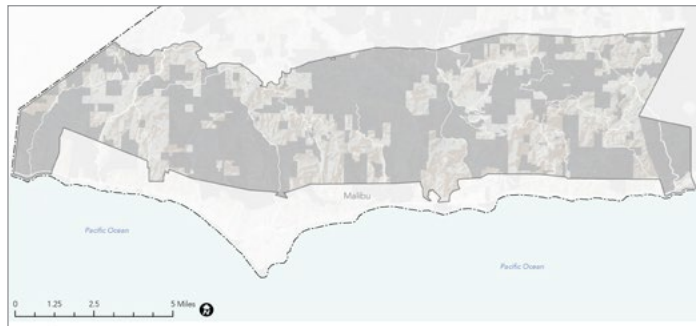
- Indicators:
- » High Poverty Rate
 - » High Unemployment Rate
 - » Majority-Minority Population
 - » High % of Young Children
 - » High % of Elderly Residents
 - » High % of Non-English-Speaking Residents
 - » Low % of Two-Parent Households

Transportation Barriers Dimension



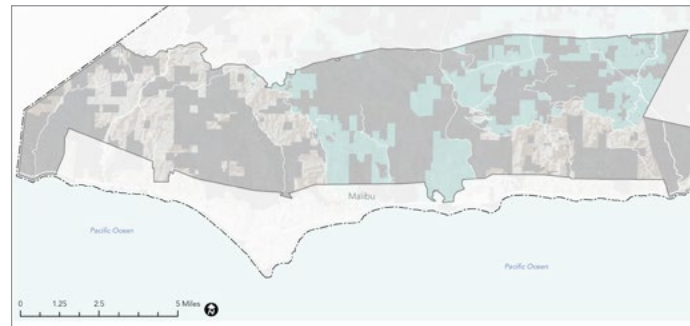
- Indicators:
- » Low Automobile Access
 - » Low Public Transit Access
 - » Low Active Commuting Rate
 - » High Traffic Density
 - » High Pedestrian Injuries

Health Vulnerability Dimension



- Indicators:
- » Low Park Access
 - » Low Tree Canopy
 - » High % Impervious Surface
 - » High Number of Excessive Heat Days
 - » High Urban Heat Island Index Score

Environmental Vulnerability Dimension



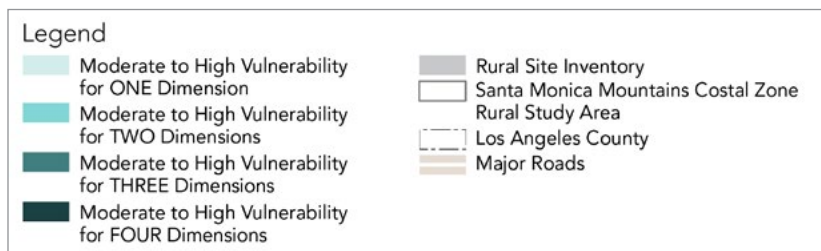
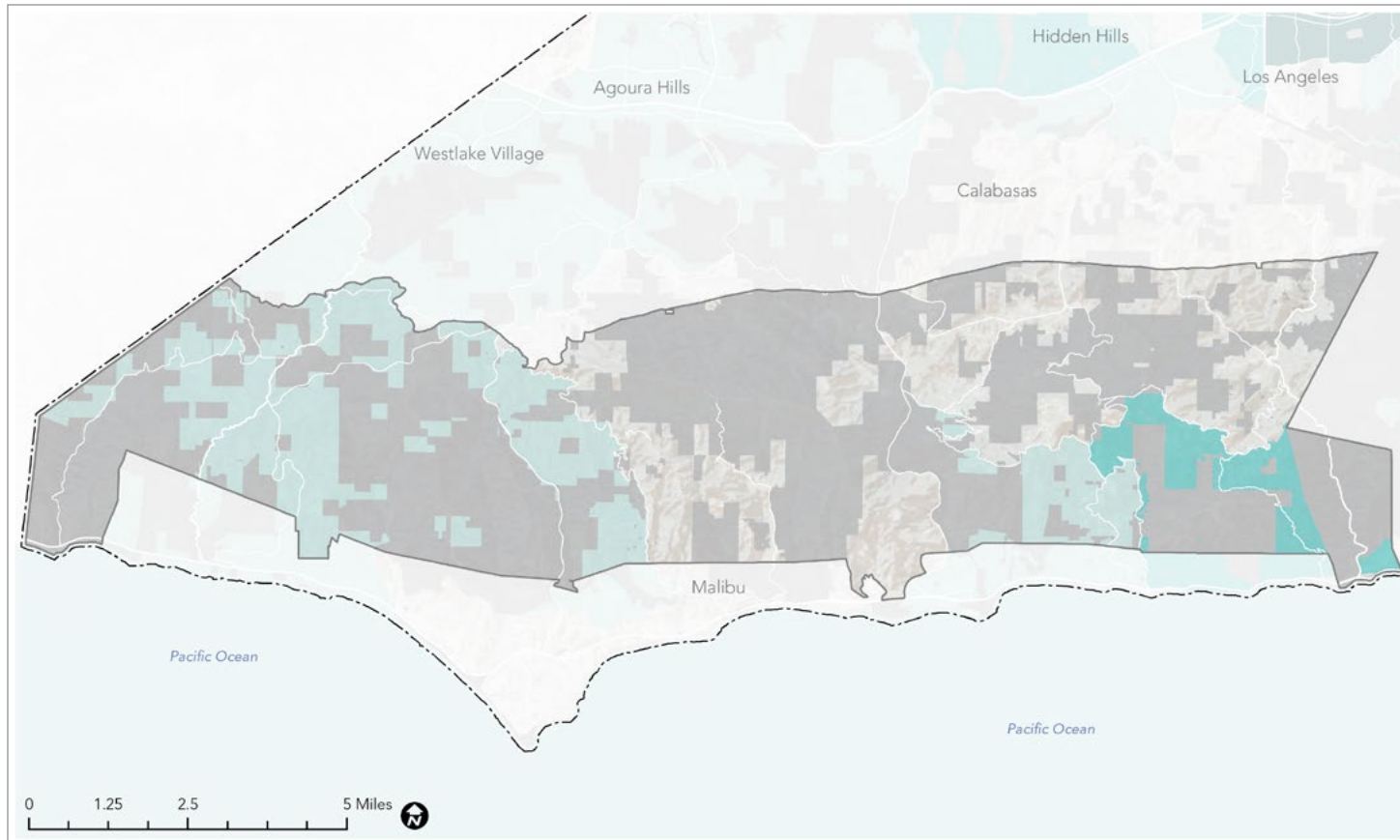
- Indicators:
- » Reduced Life Expectancy at Birth
 - » High Pollution Levels

Legend

- Light Green: Low
- Medium Green: Moderate
- Dark Green: High
- Grey: Rural Site Inventory
- White: Santa Monica Mountains Coastal Zone
- Light Blue: Rural Study Area
- White with Dashed Border: Los Angeles County
- Brown: Major Roads

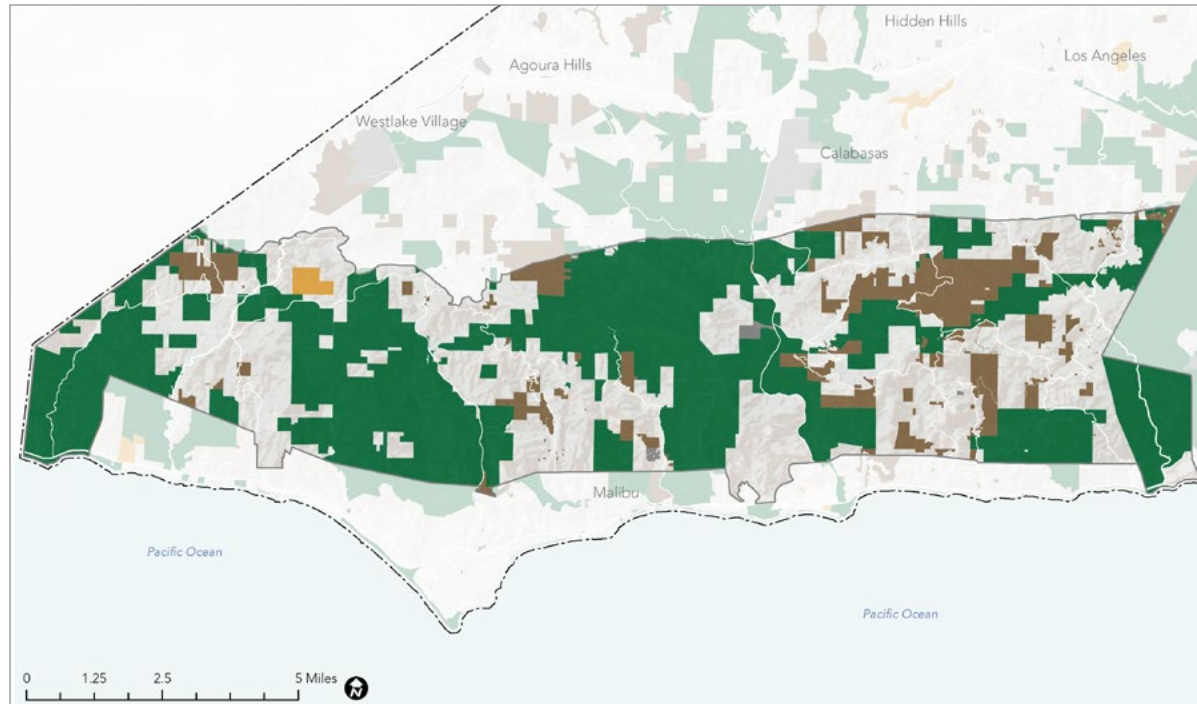
Maps source: HPI, 2021; 2021 RRE Inventory

COMPOSITE POPULATION VULNERABILITY

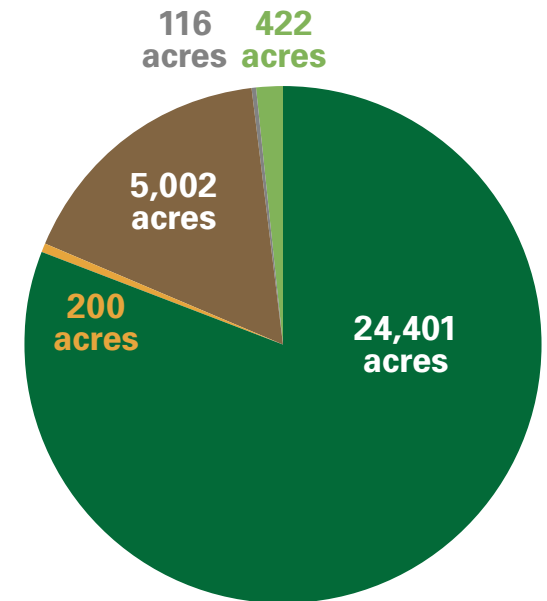


Map source: HPI, 2021; 2021 RRE Inventory


RURAL SITE INVENTORY



Map source: 2021 RRE Inventory




- REGIONAL RECREATION PARKS
- NATURE-BASED RECREATION AREAS
- REGIONAL SPECIALIZED RECREATION AREAS
- CONSERVATION AREAS
- OTHER PUBLIC AND SEMI-PUBLIC OPEN SPACE
- LOCAL PARKS




30,141

TOTAL ACRES OF RURAL RECREATION AND CONSERVATION AREA LAND LOCATED WITHIN THE STUDY AREA



57.9%

OF THE TOTAL LAND AREA WITHIN THE STUDY AREA IS RURAL RECREATION AND CONSERVATION AREA LAND

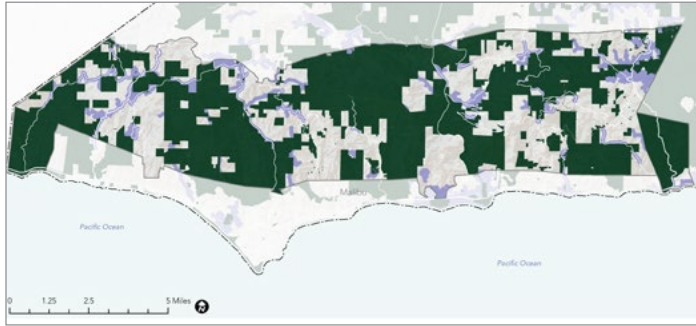


2,489

ACRES OF RURAL RECREATION AND CONSERVATION AREA LAND PER 1000 STUDY AREA RESIDENTS

RURAL RECREATION SITE ACCESS

Walking Distance (0.5 miles from entry)

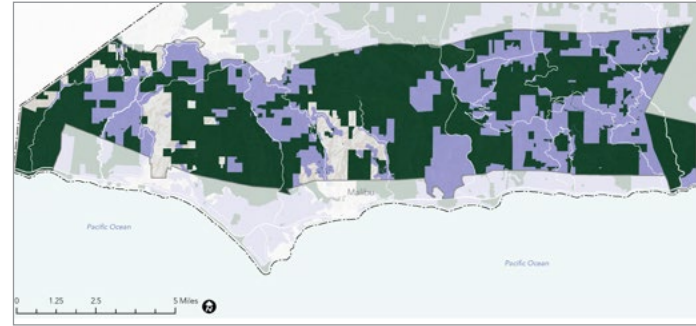



18% 
OF STUDY AREA
RESIDENTS LIVE
WITHIN WALKING
DISTANCE
OF A RURAL
RECREATION SITE

Legend

-  Areas within a 0.5-mile walk of a Rural Recreation Site
-  Rural Recreation Site
-  Santa Monica Mountains Costal Zone Rural Study Area
-  Los Angeles County
-  Major Roads

Cycling Distance (2.5 miles from entry)

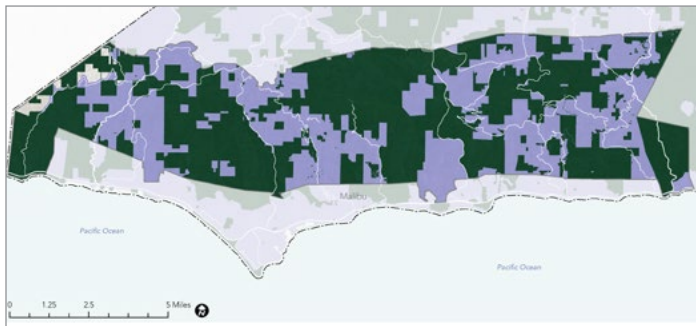


88% 
OF STUDY AREA
RESIDENTS LIVE
WITHIN CYCLING
DISTANCE
OF A RURAL
RECREATION SITE

Legend

-  Areas within a 2.5-mile bicycle ride of a Rural Recreation Site
-  Rural Recreation Site
-  Santa Monica Mountains Costal Zone Rural Study Area
-  Los Angeles County
-  Major Roads

Driving Distance (5 miles from entry)

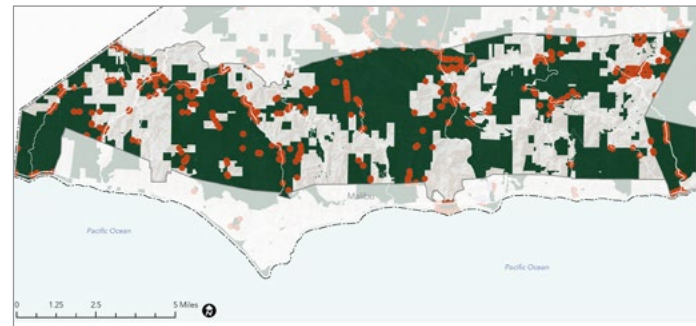


99% 
OF STUDY AREA
RESIDENTS LIVE
WITHIN DRIVING
DISTANCE
OF A RURAL
RECREATION SITE

Legend







-  Areas within a 5-mile drive of a Rural Recreation Site
-  Rural Recreation Site
-  Santa Monica Mountains Costal Zone Rural Study Area
-  Los Angeles County
-  Major Roads

Transit Service (entry is within 0.5 miles of transit stop)



0% 
OF RURAL
RECREATION
SITES ARE
SERVED BY
PUBLIC TRANSIT

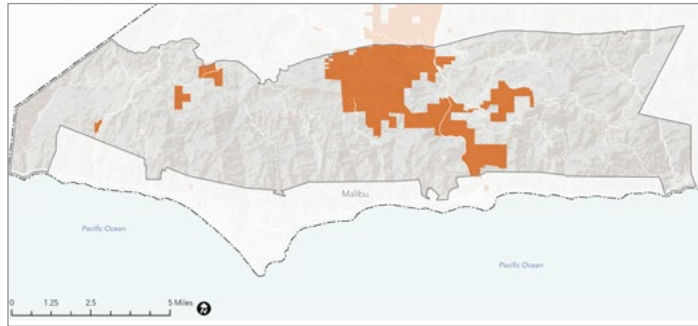
Legend

-  Entry Point Served by Public Transit (located within a half mile of a Transit Stop)
-  Entry Point Not Served by Public Transit (not located within a half mile of a Transit Stop)
-  Rural Recreation Site
-  Santa Monica Mountains Costal Zone Rural Study Area
-  Los Angeles County
-  Major Roads

Maps source: ArcGIS StreetMap Premium, 2021; 2021 RRE Inventory

RURAL RECREATION OPPORTUNITIES

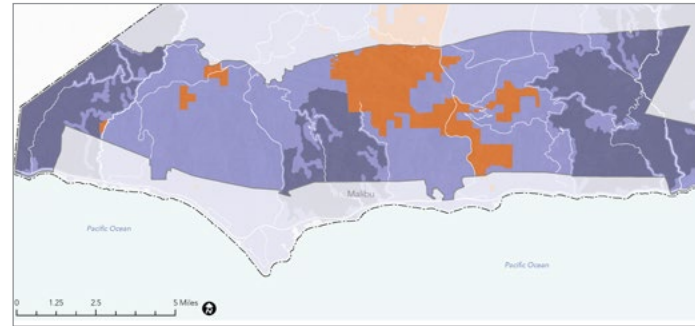
Gathering Spaces



Legend

- Rural Recreation Sites with Gathering Spaces
- Santa Monica Mountains Coastal Zone Rural Study Area
- Los Angeles County
- Major Roads

Proximity to Sites With Gathering Spaces

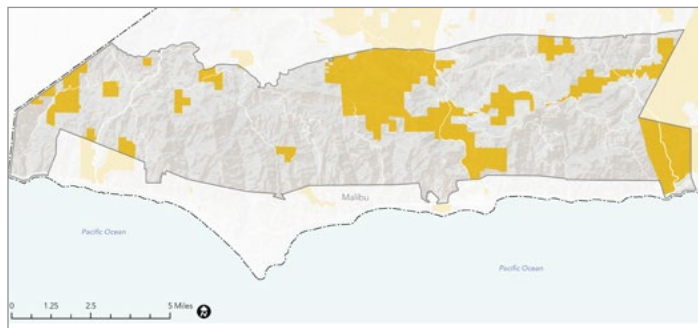


57.2%
OF RESIDENTS
LIVE WITHIN A
5-MILE DRIVE

Legend

- Areas within a 5-mile drive of a Rural Recreation Site with Gathering Spaces
- Areas within a 10-mile drive of a Rural Recreation Site with Gathering Spaces
- Rural Recreation Sites with Gathering Spaces
- Santa Monica Mountains Coastal Zone Rural Study Area
- Los Angeles County
- Major Roads

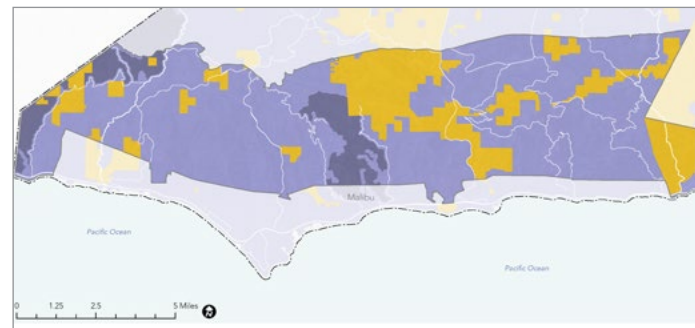
Sports Facilities



Legend

- Rural Recreation Sites with Sports Facilities
- Santa Monica Mountains Coastal Zone Rural Study Area
- Los Angeles County
- Major Roads

Proximity to Sites With Sports Facilities



92.2%
OF RESIDENTS
LIVE WITHIN A
5-MILE DRIVE

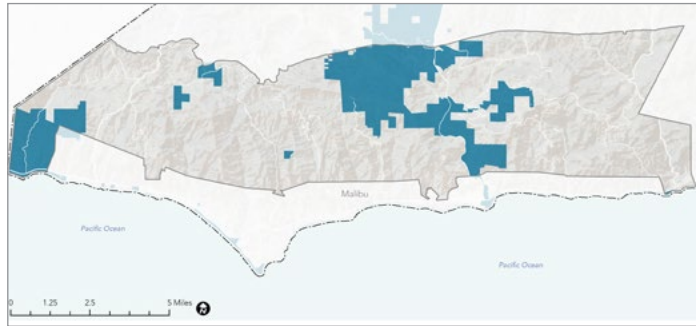
Legend

- Areas within a 5-mile drive of a Rural Recreation Site with Sports Facilities
- Areas within a 10-mile drive of a Rural Recreation Site with Sports Facilities
- Rural Recreation Sites with Sports Facilities
- Santa Monica Mountains Coastal Zone Rural Study Area
- Los Angeles County
- Major Roads

Maps source: PNA, 2016; ArcGIS StreetMap Premium, 2021; 2021 RRE Inventory

RURAL RECREATION OPPORTUNITIES

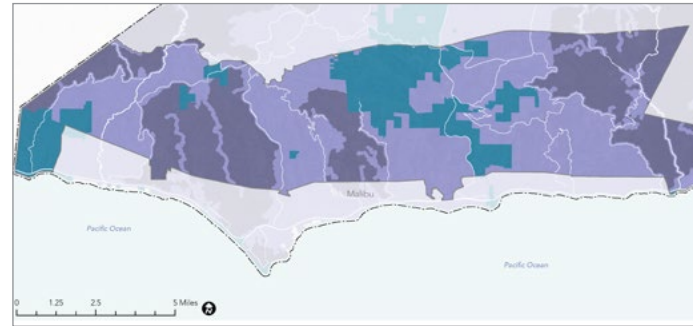
Water-Based Recreation



Legend

- Rural Recreation Sites with Water-Based Recreation
- Santa Monica Mountains Coastal Zone Rural Study Area
- Los Angeles County
- Major Roads

Proximity to Sites With Water-Based Recreation

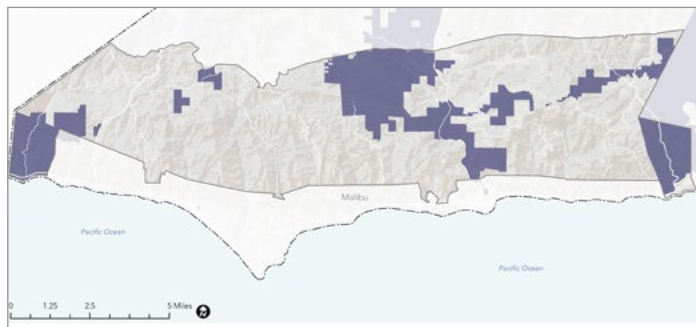


64.1%
OF RESIDENTS
LIVE WITHIN A
5-MILE DRIVE

Legend

- Areas within a 5-mile drive of a Rural Recreation Site with Water-Based Recreation
- Areas within a 10-mile drive of a Rural Recreation Site with Water-Based Recreation
- Rural Recreation Sites with Water-Based Recreation
- Santa Monica Mountains Coastal Zone Rural Study Area
- Los Angeles County
- Major Roads

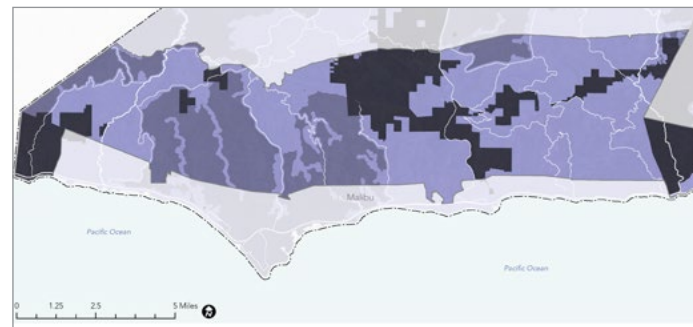
Overnight Accommodations



Legend

- Rural Recreation Sites with Overnight Accommodations
- Santa Monica Mountains Coastal Zone Rural Study Area
- Los Angeles County
- Major Roads

Proximity to Sites With Overnight Accommodations



83.4%
OF RESIDENTS
LIVE WITHIN A
5-MILE DRIVE

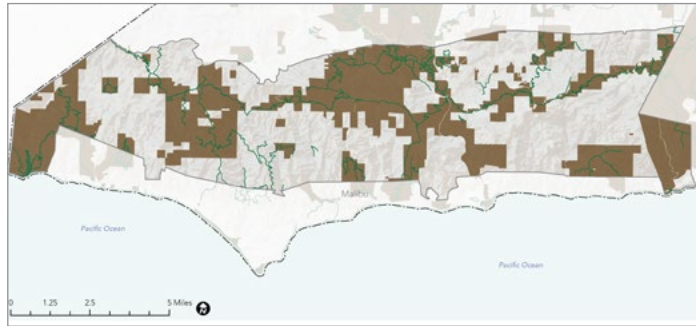
Legend

- Areas within a 5-mile drive of a Rural Recreation Site with Overnight Accommodations
- Areas within a 10-mile drive of a Rural Recreation Site with Overnight Accommodations
- Rural Recreation Sites with Overnight Accommodations
- Santa Monica Mountains Coastal Zone Rural Study Area
- Los Angeles County
- Major Roads

Maps source: PNA, 2016; ArcGIS StreetMap Premium, 2021; 2021 RRE Inventory

RURAL RECREATION OPPORTUNITIES

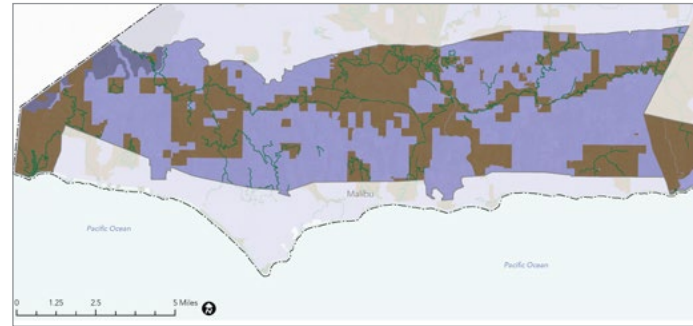
Trails and Pathways



Legend

- Rural Recreation Sites with Trails and Pathways
- Regional Trails
- Regional Bikeways
- Santa Monica Mountains Coastal Zone Rural Study Area
- Los Angeles County
- Major Roads

Proximity to Sites With Trails and Pathways

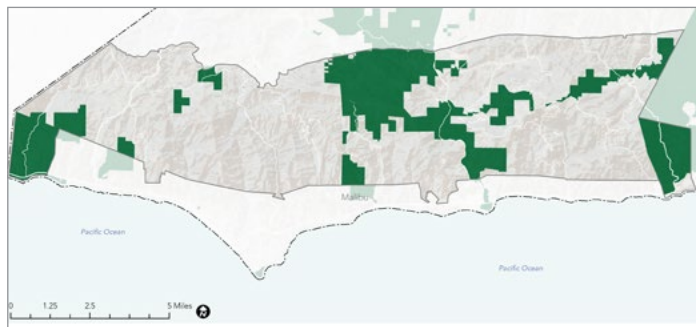


92%
OF RESIDENTS
LIVE WITHIN A
5-MILE DRIVE

Legend

- Areas within a 5-mile drive of a Rural Recreation Site with Trails and Pathways
- Areas within a 10-mile drive of a Rural Recreation Site with Trails and Pathways
- Rural Recreation Sites with Trails and Pathways
- Regional Trails
- Regional Bikeways
- Santa Monica Mountains Coastal Zone Rural Study Area
- Los Angeles County
- Major Roads

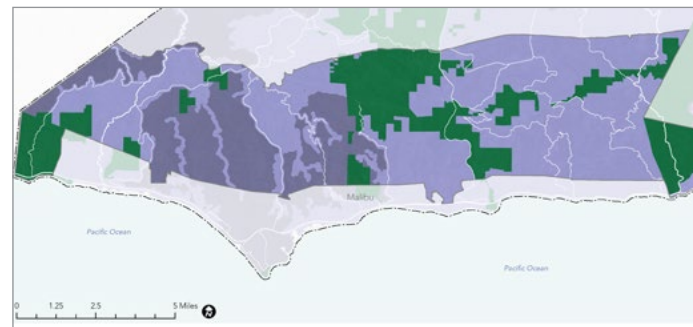
Experiential Learning Opportunities



Legend

- Rural Recreation Sites with Experiential Learning Opportunities
- Santa Monica Mountains Coastal Zone Rural Study Area
- Los Angeles County
- Major Roads

Proximity to Sites With Experiential Learning Opportunities



86%
OF RESIDENTS
LIVE WITHIN A
5-MILE DRIVE

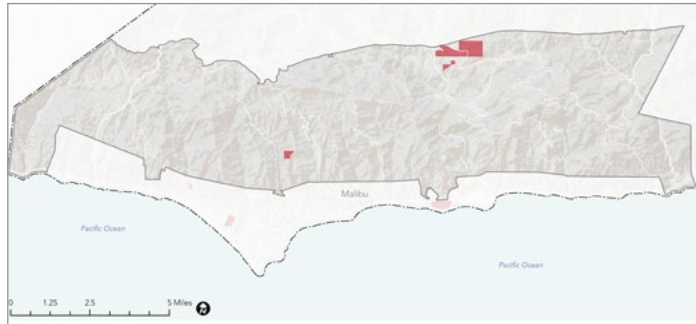
Legend

- Areas within a 5-mile drive of a Rural Recreation Site with Experiential Learning Opportunities
- Areas within a 10-mile drive of a Rural Recreation Site with Experiential Learning Opportunities
- Rural Recreation Sites with Experiential Learning Opportunities
- Santa Monica Mountains Coastal Zone Rural Study Area
- Los Angeles County
- Major Roads

Maps source: PNA, 2016; ArcGIS StreetMap Premium, 2021; 2021 RRE Inventory

RURAL RECREATION OPPORTUNITIES

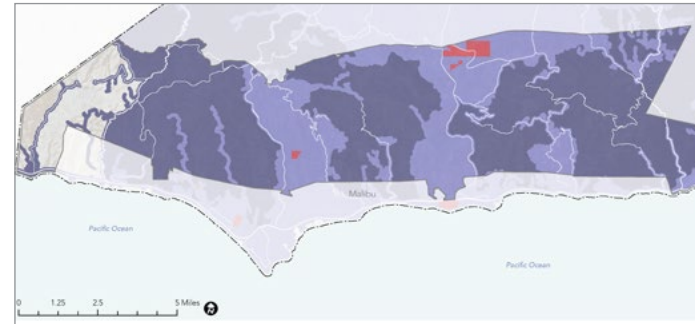
General Recreation Facilities



Legend

- Rural Recreation Sites with General Recreation Facilities
- Santa Monica Mountains Coastal Zone Rural Study Area
- Los Angeles County
- Major Roads

Proximity to Sites With General Recreation Facilities

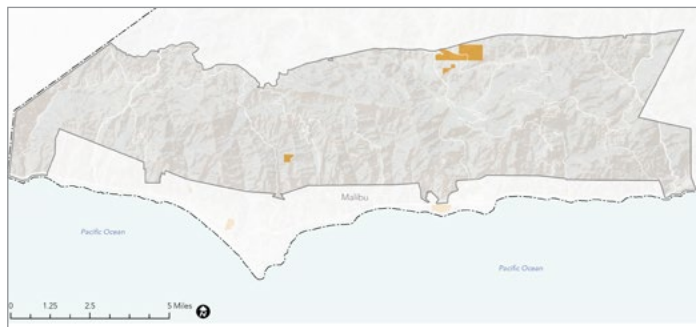


37.1%
OF RESIDENTS
LIVE WITHIN A
5-MILE DRIVE

Legend

- Areas within a 5-mile drive of a Rural Recreation Site with General Recreation Facilities
- Areas within a 10-mile drive of a Rural Recreation Site with General Recreation Facilities
- Rural Recreation Sites with General Recreation Facilities
- Santa Monica Mountains Coastal Zone Rural Study Area
- Los Angeles County
- Major Roads

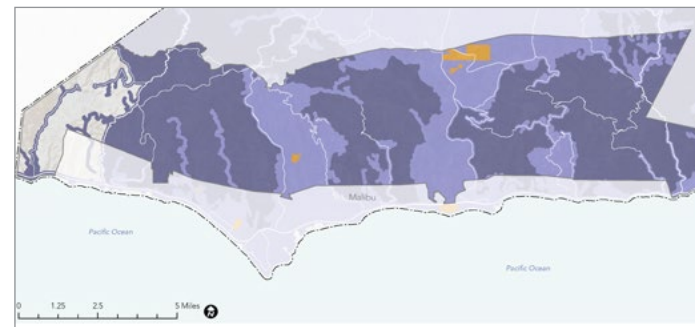
Health and Fitness Facilities



Legend

- Rural Recreation Sites with Health and Fitness Facilities
- Santa Monica Mountains Coastal Zone Rural Study Area
- Los Angeles County
- Major Roads

Proximity to Sites With Health and Fitness Facilities



37.1%
OF RESIDENTS
LIVE WITHIN A
5-MILE DRIVE

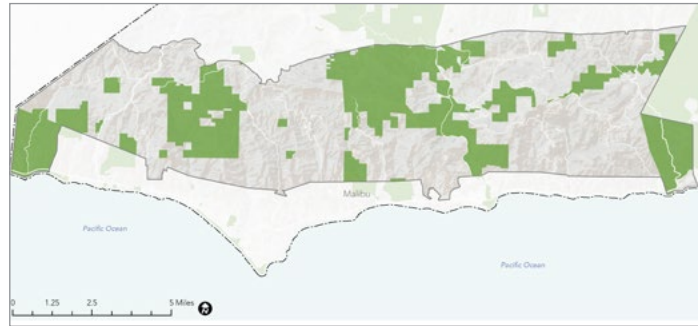
Legend

- Areas within a 5-mile drive of a Rural Recreation Site with Health and Fitness Facilities
- Areas within a 10-mile drive of a Rural Recreation Site with Health and Fitness Facilities
- Rural Recreation Sites with Health and Fitness Facilities
- Santa Monica Mountains Coastal Zone Rural Study Area
- Los Angeles County
- Major Roads

Maps source: PNA, 2016; ArcGIS StreetMap Premium, 2021; 2021 RRE Inventory

RURAL RECREATION OPPORTUNITIES

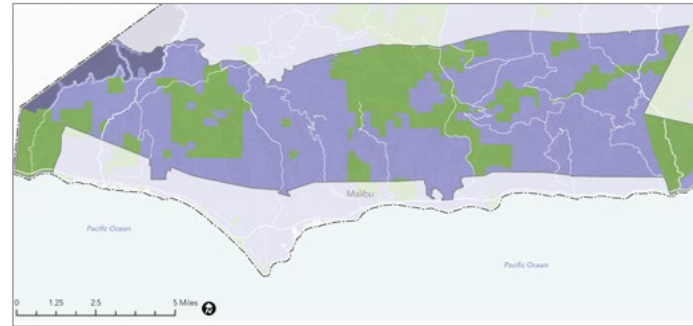
Support Facilities



Legend

- Rural Recreation Sites with Support Facilities
- Santa Monica Mountains Coastal Zone Rural Study Area
- Los Angeles County
- Major Roads

Proximity to Sites With Support Facilities



98.5%
OF RESIDENTS
LIVE WITHIN A
5-MILE DRIVE

Legend

- Areas within a 5-mile drive of a Rural Recreation Site with Support Facilities
- Rural Recreation Sites with Support Facilities
- Santa Monica Mountains Coastal Zone Rural Study Area
- Los Angeles County
- Major Roads

Maps source: PNA, 2016; ArcGIS StreetMap Premium, 2021; 2021 RRE Inventory

COMMUNITY ENGAGEMENT THEMES

BARRIERS RESIDENTS EXPERIENCE TO USING PARKS AND FACILITIES



LACK OF SHADE

Not enough shade in parks and at facilities, especially near gathering spaces and seating areas.



LIMITED ADA ACCESSIBILITY

Facilities are not always accessible to disabled and older residents.



DISTANCE

Many residents and families have to travel long distances to parks and facilities.



LACK OF PRIVACY AND ACCESS FOR NATIVE PEOPLES

Tribal members do not have access and/ or do not feel safe gathering for ceremony and other activities, and do not have privacy in park spaces.



LACK OF TRANSIT

Many parks and trails are not accessible by public transit.



NOT ENOUGH MAINTENANCE AT PARKS AND FACILITIES

Park facilities and trails need repairs, maintenance and restoration.



PARKING

Parking fees and lack of adequate parking at trailheads and at parks.



LACK OF FACILITIES AND PROGRAMMING

Nearby parks lack outdoor recreation areas, sports fields, skate parks, gathering and open spaces, and places to exercise animals.



SAFETY

Concerns about unhoused people and wildfire dangers in parks in the region, as well as pandemic safety precautions like social distancing in parks and along popular trails.



LACK OF CONNECTIVITY

Not enough safe biking and pedestrian options to get to parks.



LACK OF INFORMATION

Residents do not know where parks are located, what facilities are available, or how to use and get to amenities.

“Shade is essential in this hot area. Most people who frequent parks are families with young children who would really like the shade.”

“Neglect is a big issue now in Tapia Park. Overgrown, many dead and dying brush and trees.... Big wildfire danger.”

“I don’t own a car, the parks I like most are not safe to bike to.”

“There is no restroom in our local park.”

COMMUNITY ENGAGEMENT THEMES

COMMUNITY SUGGESTIONS TO INCREASE AND IMPROVE VISITS TO RURAL PARKS AND FACILITIES



MORE SHADE

More shade structures and trees in gathering and playground spaces.



ACCESS TO WATER

Water fountains for users and animals in parks and along trails



ADDRESS HOMELESSNESS

Expand services to support unhoused people who use parks.



ADA ACCESSIBILITY

Provide wheelchair and disabled accessible trails and facilities, including restrooms.



EXPAND NATIVE AMERICAN ACCESS AND FACILITIES

Respect privacy and provide access to ceremonial spaces for gatherings and events.



BETTER ACCESS TO INFORMATION

More information about events at parks and available amenities.



IMPROVED MAINTENANCE AND INFRASTRUCTURE

Clean restrooms and trails, bike parking and electric vehicle charging areas, and more wildfire mitigation and removal of dead vegetation.



MORE RECREATION FACILITIES

Extend facilities hours, provide more bike paths, and build tennis and pickleball courts, sports fields, skate parks, playgrounds, gathering spaces, and places to exercise dogs.



IMPROVED INFRASTRUCTURE

More restrooms, shaded places to sit and gather with friends and family, and walk dogs.



ENHANCE CONNECTIVITY

Provide greenways and trail networks that connect parks and provide safe transportation corridors for bicyclists, equestrians and pedestrians.



ENHANCE PRESERVATION AND STEWARDSHIP

Organize stewardship and restoration activities at parks.

“We need more and safe bicycle trails to get to parks.”

“I would really like if it would be more explicit how to reach parks with public transportations and bike routes.”

“Allow nature to be protected, like mountain lions and deer.”

“[We need] greenbelts with plants, trees, shade, and protected bike and walking paths that connect communities and other parks.”

“Water fountains that provide a [separate] place for dogs to drink.”

RURAL RECREATION PRIORITY ANALYSIS

Areas Experiencing the Highest Levels of Overall Population Vulnerability



High Levels of Social and Transportation Barriers



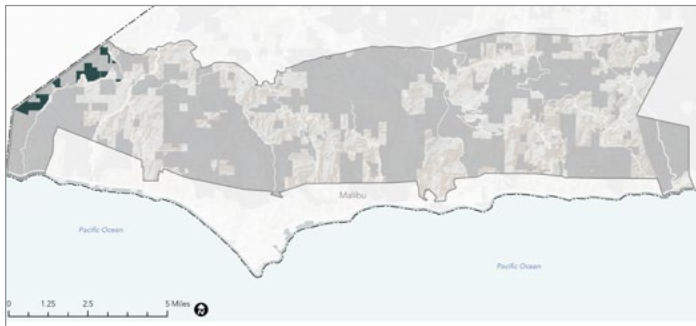
High Levels of Health and Environmental Vulnerability

Legend

- Areas of Moderate to High Vulnerability Across All Four Dimensions
- Santa Monica Mountains Coastal Zone Rural Study Area
- Los Angeles County
- Major Roads

Map source: HPI, 2021; 2021 RRE Inventory

Areas Located in Low Proximity to Rural Recreation Sites



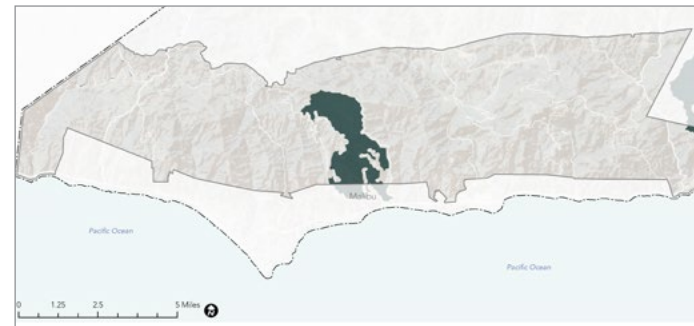

Low Proximity to Rural Recreation Sites

Legend

- Areas in Low Proximity to Rural Recreation Sites (beyond a 5-mile drive to any Regional Recreation Park Entry Points, Nature-Based Recreation Area Entry Points or Local Park Entry Points)
- Rural Site Inventory
- Santa Monica Mountains Coastal Zone Rural Study Area
- Los Angeles County
- Major Roads

Map source: ArcGIS StreetMap Premium, 2021; 2021 RRE Inventory

Areas With Access to the Fewest Recreation Opportunity Types



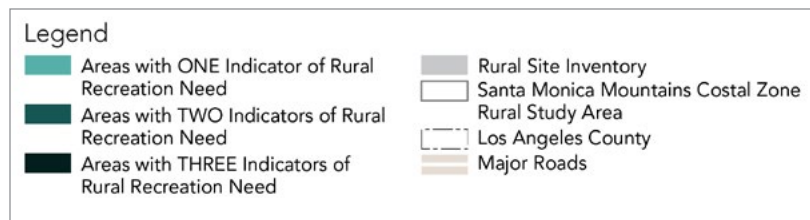
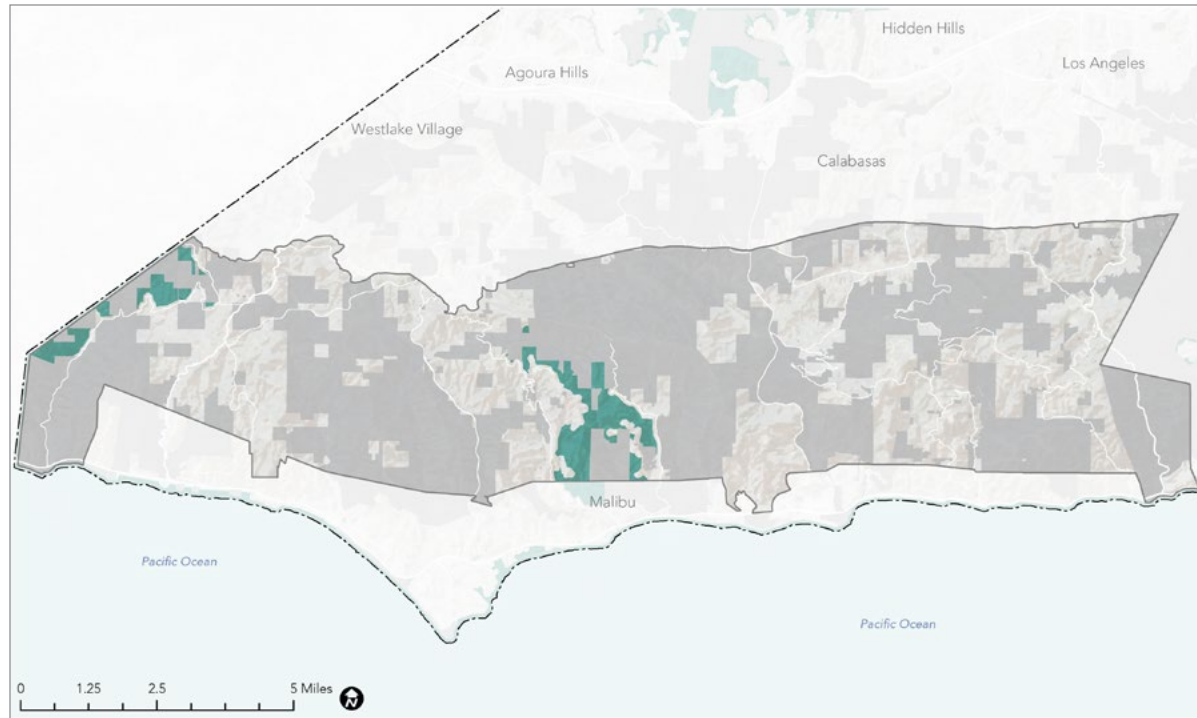

Proximity to Fewest Recreation Opportunity Types

Legend

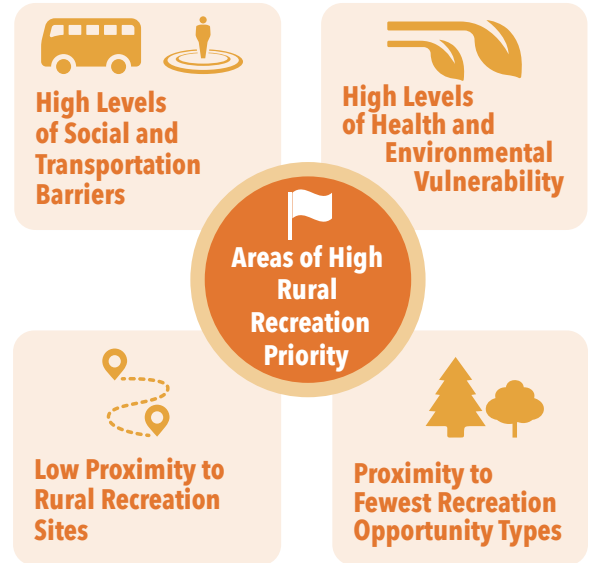
- Areas in proximity (5-mile driving distance) to THREE OR FEWER Rural Recreation Opportunity Types
- Santa Monica Mountains Coastal Zone Rural Study Area
- Los Angeles County
- Major Roads

Map source: ArcGIS StreetMap Premium, 2021; 2021 RRE Inventory

RURAL RECREATION PRIORITY AREAS



Areas with:



Map source: HPI, 2021; ArcGIS StreetMap Premium, 2021; 2021 RRE Inventory

PRIORITY PROJECT TYPES



PRIORITY PROJECTS

- » Acquisition of Open Space
- » Improvements and Expansion of Trails and Trailheads
- » Addition of Interpretive Signage and Displays at All Parks
- » Splash Pad
- » Picnic Shelters
- » Fitness Zones

Legend

Gathering Spaces	Overnight Accommodations
Sports Facilities	General Recreation
Experiential Learning Opportunities	Health and Fitness
Water-Based Recreation	Support Facilities
Trails and Pathways	

Map source: PNA, 2016

Note: Priority projects are based on lists of priority projects from the 2016 PNA and updated public input gathered as part of 2022 RRE.