

we all need



PNA+

APPENDIX B

RURAL STUDY

AREA PROFILES

This project was previously called the Regional and Rural Edition (RRE) to emphasize its focus on regional and rural recreation needs and priorities. This project name was used during the data collection, and community engagement and outreach phases which occurred primarily in 2021. As this report was being completed in 2022, DPR decided to rename the project the Parks Needs Assessment Plus (PNA+) to clarify and better communicate that this project complements and offers new information not previously included in the 2016 Parks Needs Assessment (PNA), such as mapping and analyses related to population vulnerability, environmental benefits, environmental burdens, and priority areas for environmental conservation, environmental restoration, regional recreation, and rural recreation. (Please note that there remains some text and graphic references to the RRE in this document because that was the project name when some components of this study were completed.)

NORTHEAST ANTELOPE VALLEY RURAL STUDY AREA PROFILE

RURAL STUDY AREA ID #2 / PNA STUDY AREA ID #17

- » Study Area Description
- » Study Area Demographics
- » Population Vulnerability
- » Rural Recreation and Conservation Sites
- » Rural Recreation Site Access
- » Recreation Opportunity Types
- » Community Engagement Themes
- » Rural Recreation Priority Analysis
- » Rural Recreation Priority Areas
- » Priority Project Types

Note

This profile is not intended to stand alone. For definitions of key terms and a full description of the analysis summarized within please refer to Chapter 5 of the main report as well as Appendix C: Technical Resources.



STUDY AREA DESCRIPTION

PHYSICAL CONTEXT

The Northeast Antelope Valley Study Area is located in the Antelope Valley Regional Study Area. The Northeast Antelope Valley Study Area is bordered by the cities of Lancaster and Palmdale to the west and high desert to the north, east, and south. The Study Area encompasses approximately 324 square miles. The unincorporated communities of Hi Vista, Wilsona Gardens, and Lake Los Angeles (partially) are located in the Northeast Antelope Valley Study Area.

STUDY AREA CONSIDERATIONS

The Study Area has major constraints, including natural hazards, such as earthquakes and extreme heat, lack of infrastructure, including public transit service, and limited water supply. The desirability of rural living and the availability of affordable housing have led to significant growth in some unincorporated communities, including Lake Los Angeles, the largest community in the Study Area. Employment opportunities are located in more populated areas of the Antelope Valley and in the Los Angeles Basin. As a result, some residents in the Study Area commute long distances to workplaces. Poverty levels in the Study Area are high; in 2016, 68 percent of the population had an income below 200 percent poverty level (the County average in 2016 was 40 percent).

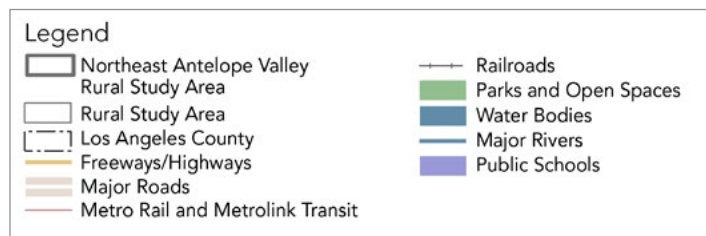
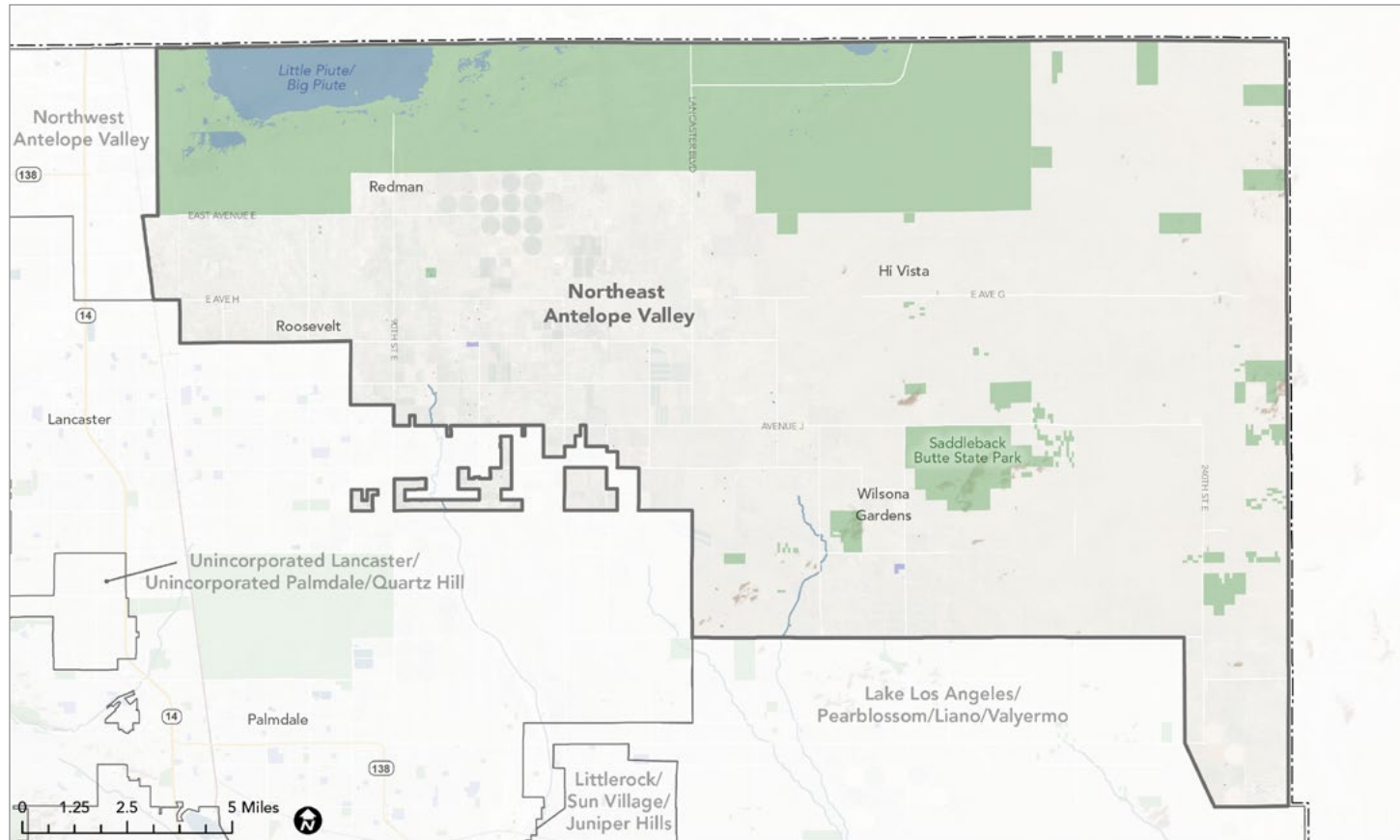
KEY ANALYSIS TAKEAWAYS

- » Environmental vulnerability and social barriers are the most prevalent dimensions of population vulnerability in the Study Area.
- » Only 9% of residents live within walking distance of a rural recreation site.
- » No recreation sites in the Study Area are served by public transit.
- » The majority of rural site area in the Study Area falls under Other Public and Semi-Public Open Space. The Study Area contains no Local Park or Regional Recreational Park area.
- » Many Study Area residents (over 70%) live within a 5-mile drive of each type of recreation opportunity.
- » High levels of population vulnerability and low proximity to rural recreation sites are the most pronounced aspects of rural recreation priority in the Study Area.

KEY COMMUNITY ENGAGEMENT TAKEAWAYS

- » Distance, safety and cost are identified barriers to park use for residents who live in the Study Area.
- » Residents say they need more nearby parks and recreation facilities, trails and green spaces, and that amenities and programs need to be affordable.
- » Greatest needs are for places to swim; gathering and event spaces; places to be surrounded by nature; and places to play.
- » Three in four survey respondents say they are recreating outside less often due to COVID, and nearly all (91%) are looking for more recreation activities closer to home.

NORTHEAST ANTELOPE VALLEY RURAL STUDY AREA



Map source: PNA, 2016; US Census, 2019; Esri, 2021; MIG, 2021; LAC GIS, 2021; USGS NHD, 2021
 Note: All Rural Study Area Profile maps in this chapter include and refer to the sources listed here as basemap layers.

STUDY AREA DEMOGRAPHICS

Population, Race, Ethnicity, Gender, Income, Age, and Education Level

Population	
Total	9,136

Race	Percentage
White	74.9%
Black or African American	6.6%
American Indian and Alaska Native	0.8%
Asian	3.2%
Native Hawaiian and Other Pacific Islander	0.08%
Some Other Race	11.58%
Two or More Races	2.9%
Total	100%

Ethnicity	Percentage
Hispanic or Latino	41.95%
Not Hispanic or Latino	58.05%
Total	100%

Income	Percentage
Less than \$25,000	37.35%
\$25,000-\$49,999	29.8%
\$50,000-\$74,999	13.73%
\$75,000-\$99,999	6.78%
\$100,000-\$150,000	8.38%
\$150,000	3.95%
Total	100%

Gender	Percentage
Female	47.92%
Male	52.08%
Total	100%

Age	Percentage
Under 5 years	5.8%
5 to 9 years	6.33%
10 to 14 years	7.8%
15 to 19 years	10.4%
20 to 29 years	12.03%
30 to 39 years	9.55%
40 to 49 years	12.43%
50 to 59 years	17.65%
60 to 69 years	9.3%
70 to 79 years	3.5%
80+ years	2.5%
Total	100%

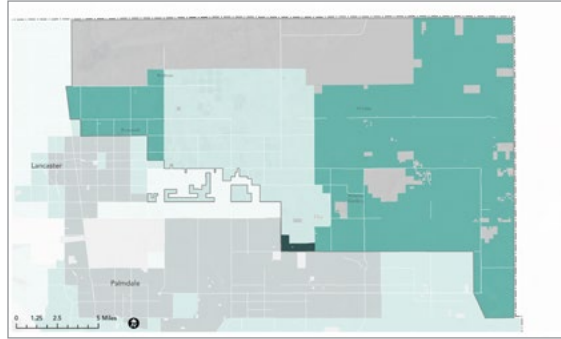
Education Level	Percentage
High School Diploma	30.3%
Some College, No Degree	26.53%
Associates Degree	5.83%
Bachelor's Degree	6.3%
Master's Degree	2%
Other	29.03%
Total	100%

Source: 2016 PNA, U.S. Census Bureau, 2014 ACS 5-year Estimate Subject Tables, See Technical Appendix for Census Tracts included in each Study Area.

Note: At the time that this report was prepared, 2020 Census results were not available.

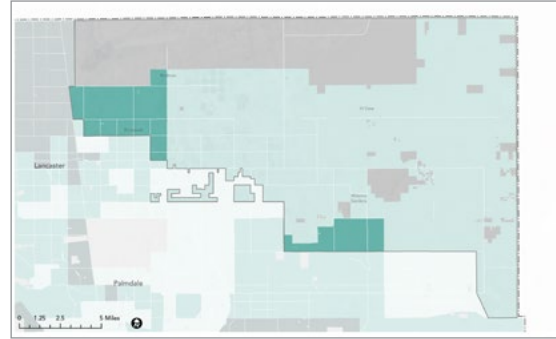
POPULATION VULNERABILITY DIMENSIONS

Social Barriers Dimension



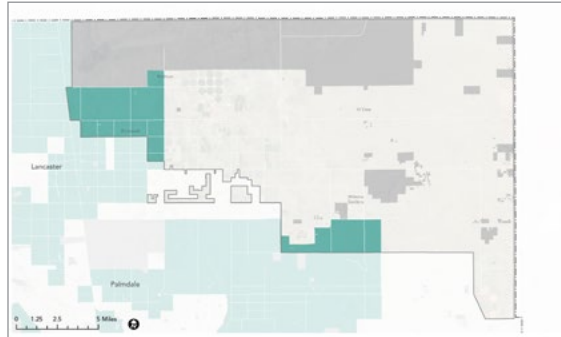
- Indicators:
- » High Poverty Rate
 - » High Unemployment Rate
 - » Majority-Minority Population
 - » High % of Young Children
 - » High % of Elderly Residents
 - » High % of Non-English-Speaking Residents
 - » Low % of Two-Parent Households

Transportation Barriers Dimension



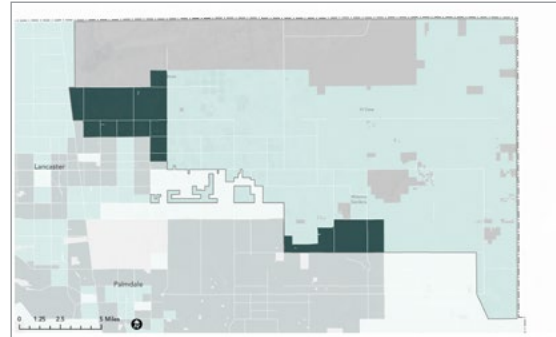
- Indicators:
- » Low Automobile Access
 - » Low Public Transit Access
 - » Low Active Commuting Rate
 - » High Traffic Density
 - » High Pedestrian Injuries

Health Vulnerability Dimension



- Indicators:
- » Low Park Access
 - » Low Tree Canopy
 - » High % Impervious Surface
 - » High Number of Excessive Heat Days
 - » High Urban Heat Island Index Score

Environmental Vulnerability Dimension

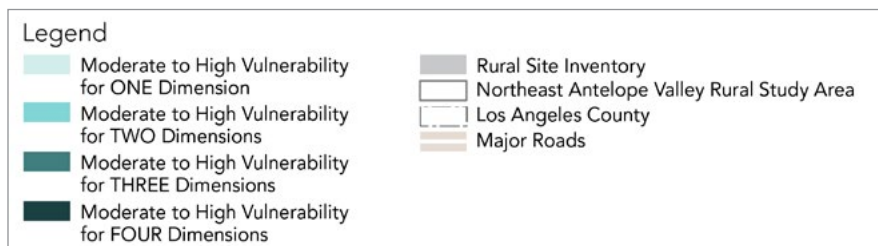
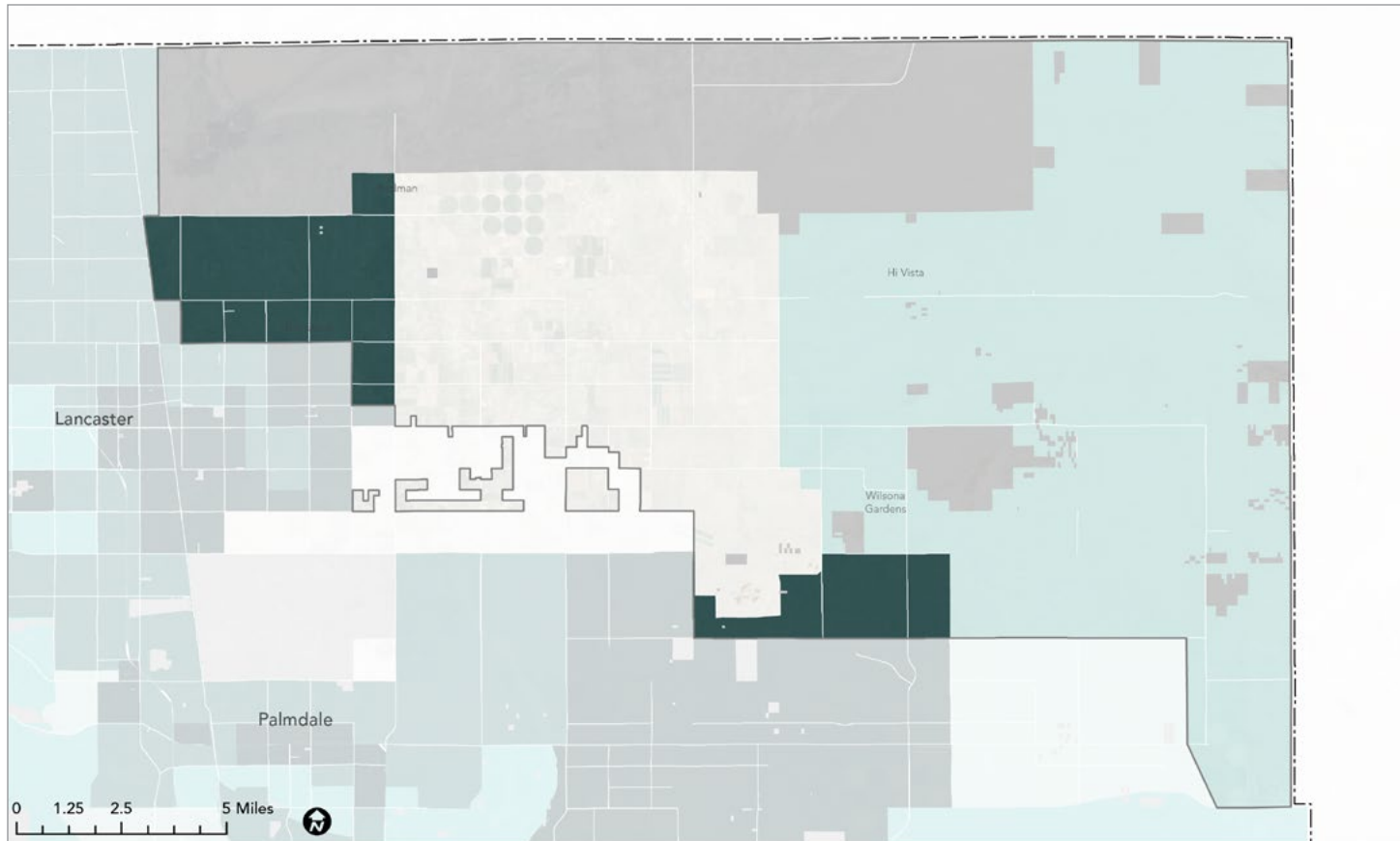


- Indicators:
- » Reduced Life Expectancy at Birth
 - » High Pollution Levels



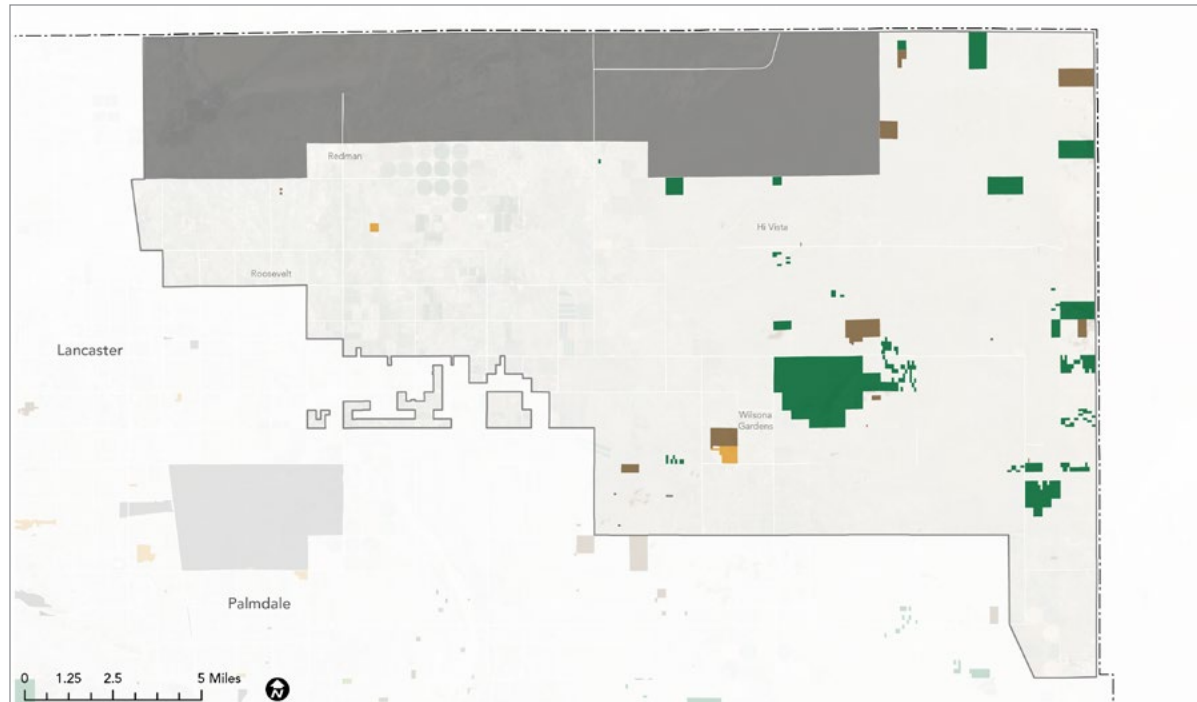
Maps source: HPI, 2021; 2021 RRE Inventory

COMPOSITE POPULATION VULNERABILITY

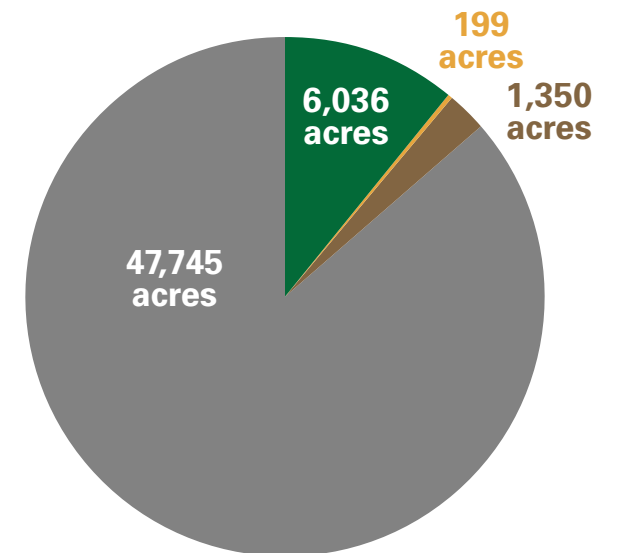


Map source: HPI, 2021; 2021 RRE Inventory


RURAL SITE INVENTORY



Map source: 2021 RRE Inventory




- REGIONAL RECREATION PARKS
- NATURE-BASED RECREATION AREAS
- REGIONAL SPECIALIZED RECREATION AREAS
- CONSERVATION AREAS
- OTHER PUBLIC AND SEMI-PUBLIC OPEN SPACE
- LOCAL PARKS




55,330

TOTAL ACRES OF RURAL RECREATION AND CONSERVATION AREA LAND LOCATED WITHIN THE STUDY AREA



26.6%

OF THE TOTAL LAND AREA WITHIN THE STUDY AREA IS RURAL RECREATION AND CONSERVATION AREA LAND

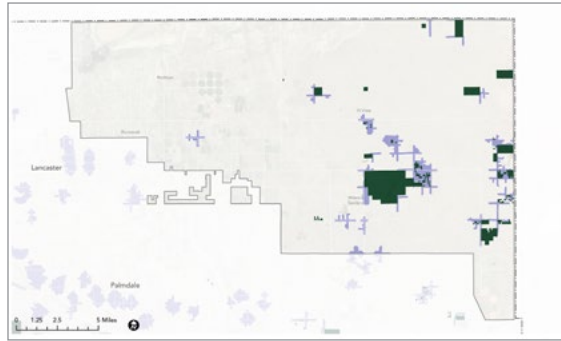


6,056

ACRES OF RURAL RECREATION AND CONSERVATION AREA LAND PER 1000 STUDY AREA RESIDENTS

RURAL RECREATION SITE ACCESS

Walking Distance (0.5 miles from entry)

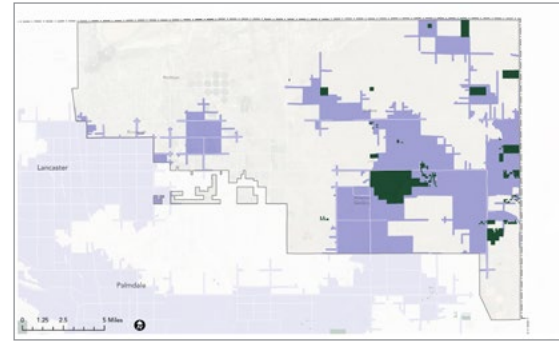


9% 
OF STUDY AREA RESIDENTS LIVE WITHIN WALKING DISTANCE OF A RURAL RECREATION SITE

Legend

- Areas within a 0.5-mile walk of a Rural Recreation Site
- Rural Recreation Site
- Northeast Antelope Valley Rural Study Area
- Los Angeles County
- Major Roads

Cycling Distance (2.5 miles from entry)

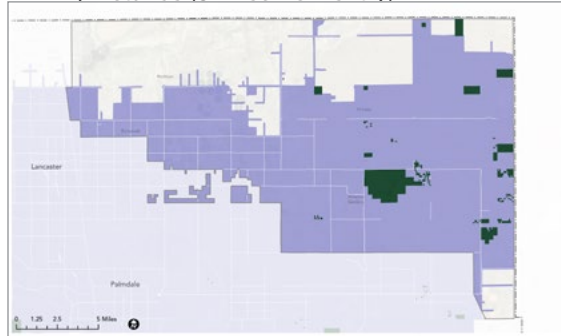


76% 
OF STUDY AREA RESIDENTS LIVE WITHIN CYCLING DISTANCE OF A RURAL RECREATION SITE

Legend

- Areas within a 2.5-mile bicycle ride of a Rural Recreation Site
- Rural Recreation Site
- Northeast Antelope Valley Rural Study Area
- Los Angeles County
- Major Roads

Driving Distance (5 miles from entry)

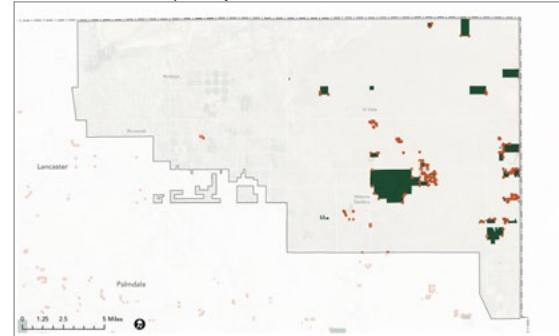


95% 
OF STUDY AREA RESIDENTS LIVE WITHIN DRIVING DISTANCE OF A RURAL RECREATION SITE

Legend

- Areas within a 5-mile drive of a Rural Recreation Site
- Rural Recreation Site
- Northeast Antelope Valley Rural Study Area
- Los Angeles County
- Major Roads

Transit Service (entry is within 0.5 miles of transit stop)



0% 
OF RURAL RECREATION SITES ARE SERVED BY PUBLIC TRANSIT

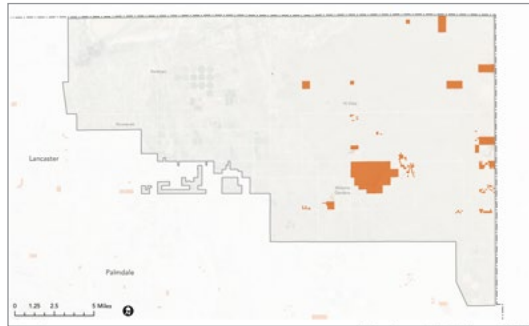
Legend

- Entry Point Served by Public Transit (located within a half mile of a Transit Stop)
- Entry Point Not Served by Public Transit (not located within a half mile of a Transit Stop)
- Rural Recreation Site
- Northeast Antelope Valley Rural Study Area
- Los Angeles County
- Major Roads

Maps source: ArcGIS StreetMap Premium, 2021; 2021 RRE Inventory

RURAL RECREATION OPPORTUNITIES

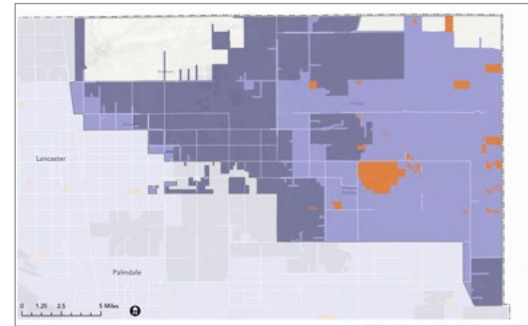
Gathering Spaces



Legend

- Rural Recreation Sites with Gathering Spaces
- Northeast Antelope Valley Rural Study Area
- Los Angeles County
- Major Roads

Proximity to Sites With Gathering Spaces



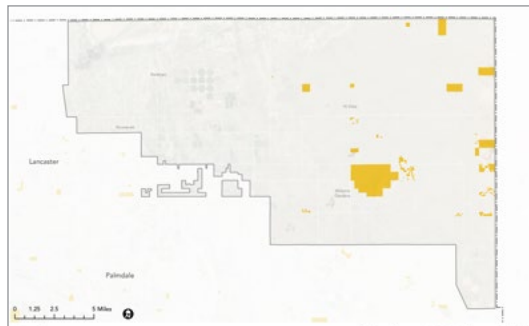
82.7%

OF RESIDENTS LIVE WITHIN A 5-MILE DRIVE

Legend

- Areas within a 5-mile drive of a Rural Recreation Site with Gathering Spaces
- Areas within a 10-mile drive of a Rural Recreation Site with Gathering Spaces
- Rural Recreation Sites with Gathering Spaces
- Northeast Antelope Valley Rural Study Area
- Los Angeles County
- Major Roads

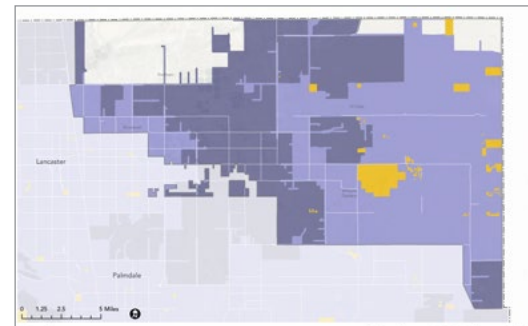
Sports Facilities



Legend

- Rural Recreation Sites with Sports Facilities
- Northeast Antelope Valley Rural Study Area
- Los Angeles County
- Major Roads

Proximity to Sites With Sports Facilities



85.6%

OF RESIDENTS LIVE WITHIN A 5-MILE DRIVE

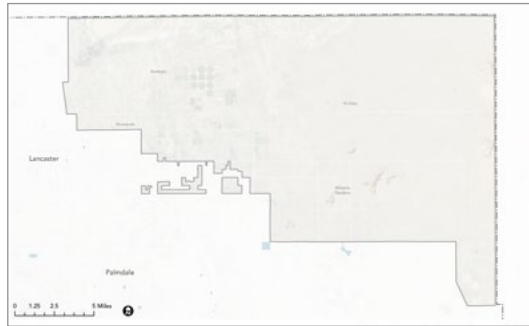
Legend

- Areas within a 5-mile drive of a Rural Recreation Site with Sports Facilities
- Areas within a 10-mile drive of a Rural Recreation Site with Sports Facilities
- Rural Recreation Sites with Sports Facilities
- Northeast Antelope Valley Rural Study Area
- Los Angeles County
- Major Roads

Maps source: PNA, 2016; ArcGIS StreetMap Premium, 2021; 2021 RRE Inventory

RURAL RECREATION OPPORTUNITIES

Water-Based Recreation

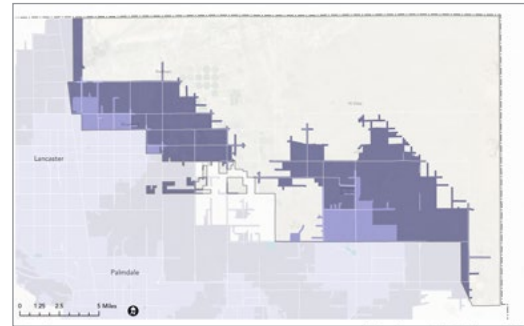


Legend

- Rural Recreation Sites with Water-Based Recreation
- Northeast Antelope Valley Rural Study Area
- Los Angeles County
- Major Roads

There are no sites with water-based recreation in this Study Area.

Proximity to Sites With Water-Based Recreation

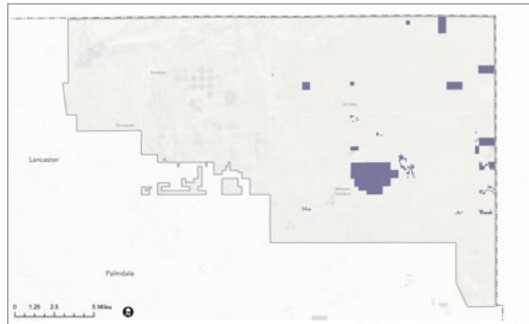


73.3%
OF RESIDENTS
LIVE WITHIN A
5-MILE DRIVE

Legend

- Areas within a 5-mile drive of a Rural Recreation Site with Water-Based Recreation
- Areas within a 10-mile drive of a Rural Recreation Site with Water-Based Recreation
- Rural Recreation Sites with Water-Based Recreation
- Northeast Antelope Valley Rural Study Area
- Los Angeles County
- Major Roads

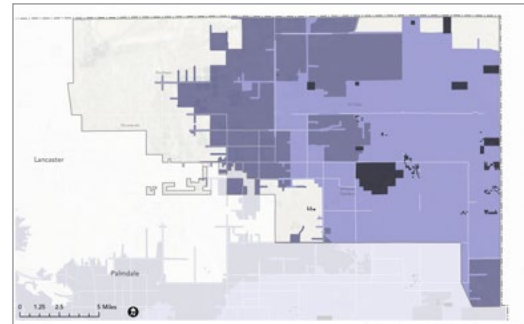
Overnight Accommodations



Legend

- Rural Recreation Sites with Overnight Accommodations
- Northeast Antelope Valley Rural Study Area
- Los Angeles County
- Major Roads

Proximity to Sites With Overnight Accommodations



75.8%
OF RESIDENTS
LIVE WITHIN A
5-MILE DRIVE

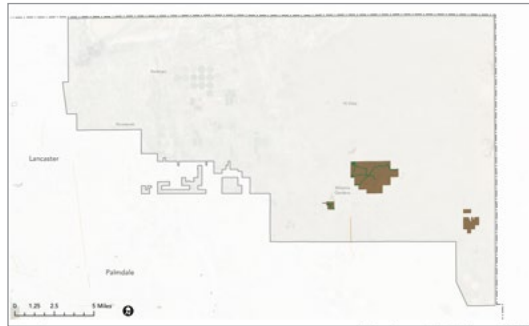
Legend

- Areas within a 5-mile drive of a Rural Recreation Site with Overnight Accommodations
- Areas within a 10-mile drive of a Rural Recreation Site with Overnight Accommodations
- Rural Recreation Sites with Overnight Accommodations
- Northeast Antelope Valley Rural Study Area
- Los Angeles County
- Major Roads

Maps source: ArcGIS StreetMap Premium, 2021; 2021 RRE Inventory

RURAL RECREATION OPPORTUNITIES

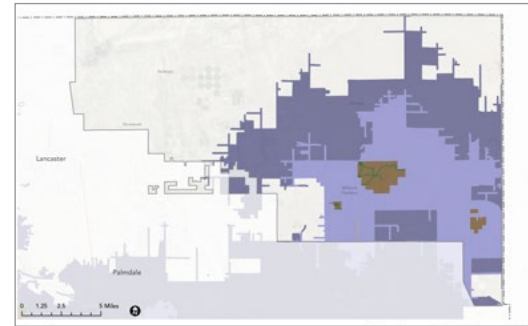
Trails and Pathways



Legend

- Rural Recreation Sites with Trails and Pathways
- Regional Trails
- Regional Bikeways
- Northeast Antelope Valley Rural Study Area
- Los Angeles County
- Major Roads

Proximity to Sites With Trails and Pathways

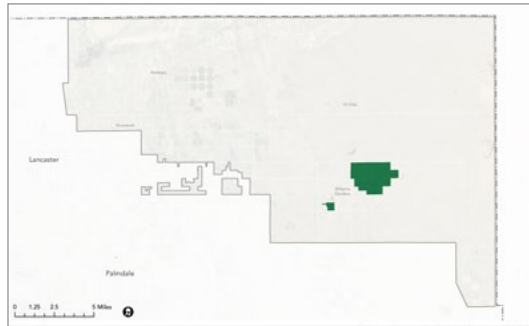


74.0%
OF RESIDENTS
LIVE WITHIN A
5-MILE DRIVE

Legend

- Areas within a 5-mile drive of a Rural Recreation Site with Trails and Pathways
- Areas within a 10-mile drive of a Rural Recreation Site with Trails and Pathways
- Rural Recreation Sites with Trails and Pathways
- Regional Trails
- Regional Bikeways
- Northeast Antelope Valley Rural Study Area
- Los Angeles County
- Major Roads

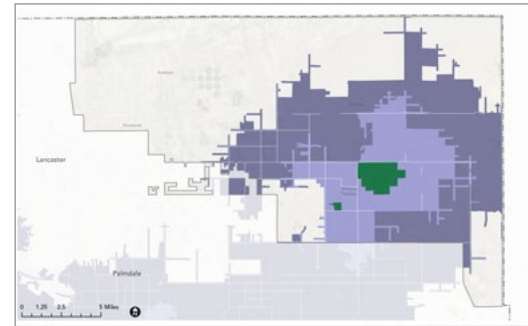
Experiential Learning Opportunities



Legend

- Rural Recreation Sites with Experiential Learning Opportunities
- Northeast Antelope Valley Rural Study Area
- Los Angeles County
- Major Roads

Proximity to Sites With Experiential Learning Opportunities



72.4%
OF RESIDENTS
LIVE WITHIN A
5-MILE DRIVE

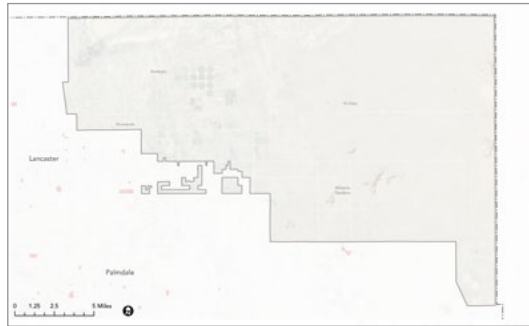
Legend

- Areas within a 5-mile drive of a Rural Recreation Site with Experiential Learning Opportunities
- Areas within a 10-mile drive of a Rural Recreation Site with Experiential Learning Opportunities
- Rural Recreation Sites with Experiential Learning Opportunities
- Northeast Antelope Valley Rural Study Area
- Los Angeles County
- Major Roads

Maps source: PNA, 2016; ArcGIS StreetMap Premium, 2021; 2021 RRE Inventory

RURAL RECREATION OPPORTUNITIES

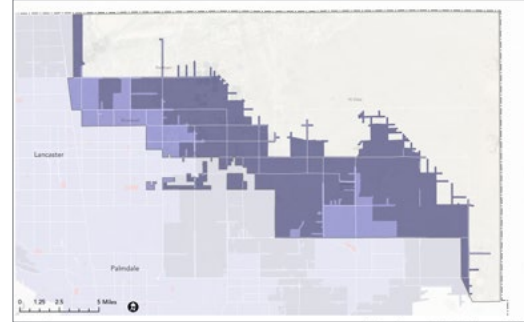
General Recreation Facilities



Legend

- Rural Recreation Sites with General Recreation Facilities
- Northeast Antelope Valley Rural Study Area
- Los Angeles County
- Major Roads

Proximity to Sites With General Recreation Facilities

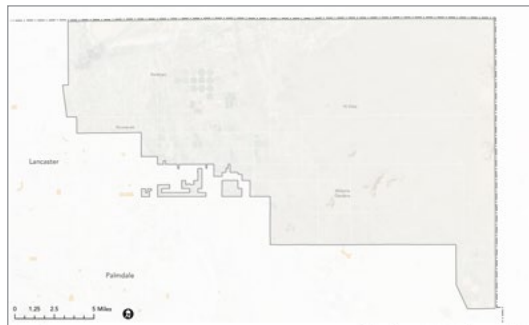


76.9%
OF RESIDENTS
LIVE WITHIN A
5-MILE DRIVE

Legend

- Areas within a 5-mile drive of a Rural Recreation Site with General Recreation Facilities
- Areas within a 10-mile drive of a Rural Recreation Site with General Recreation Facilities
- Rural Recreation Sites with General Recreation Facilities
- Northeast Antelope Valley Rural Study Area
- Los Angeles County
- Major Roads

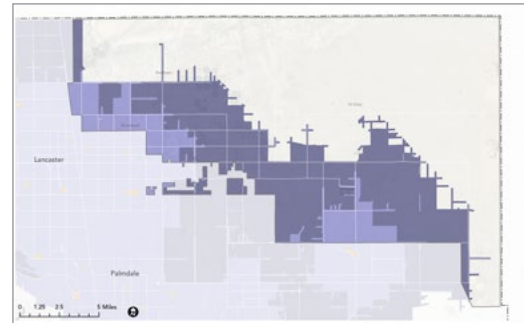
Health and Fitness Facilities



Legend

- Rural Recreation Sites with Health and Fitness Facilities
- Northeast Antelope Valley Rural Study Area
- Los Angeles County
- Major Roads

Proximity to Sites With Health and Fitness Facilities



76.9%
OF RESIDENTS
LIVE WITHIN A
5-MILE DRIVE

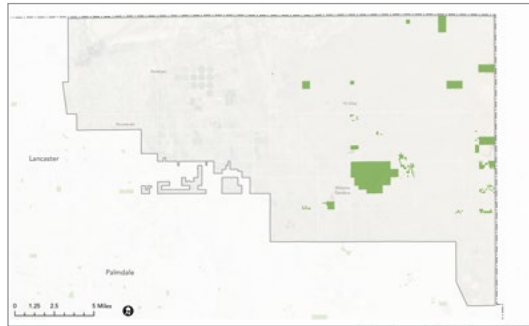
Legend

- Areas within a 5-mile drive of a Rural Recreation Site with Health and Fitness Facilities
- Areas within a 10-mile drive of a Rural Recreation Site with Health and Fitness Facilities
- Rural Recreation Sites with Health and Fitness Facilities
- Northeast Antelope Valley Rural Study Area
- Los Angeles County
- Major Roads

Maps source: ArcGIS StreetMap Premium, 2021; 2021 RRE Inventory

RURAL RECREATION OPPORTUNITIES

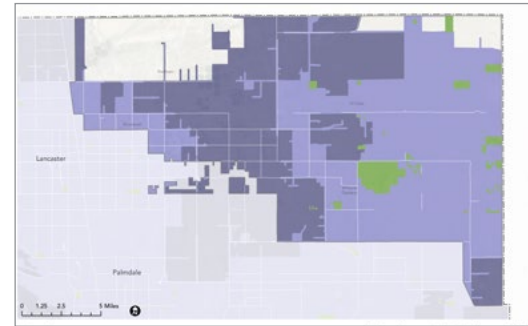
Support Facilities



Legend

- Rural Recreation Sites with Support Facilities
- Northeast Antelope Valley Rural Study Area
- Los Angeles County
- Major Roads

Proximity to Sites With Support Facilities



85.6%
OF RESIDENTS
LIVE WITHIN A
5-MILE DRIVE

Legend

- Areas within a 5-mile drive of a Rural Recreation Site with Support Facilities
- Areas within a 10-mile drive of a Rural Recreation Site with Support Facilities
- Rural Recreation Sites with Support Facilities
- Northeast Antelope Valley Rural Study Area
- Los Angeles County
- Major Roads

Maps source: PNA, 2016; ArcGIS StreetMap Premium, 2021; 2021 RRE Inventory

COMMUNITY ENGAGEMENT THEMES

BARRIERS RESIDENTS EXPERIENCE TO USING PARKS AND FACILITIES



HEAT

Heat, especially in summer, limits what people can do outside.



LIMITED ADA ACCESSIBILITY

Better wheelchair and disabled access is needed in parks and on trails.



DISTANCE

Many residents and families have to travel long distances to parks and facilities.



LACK OF GREEN SPACE

There are not enough parks and green spaces in communities in the study area.



LIMITED ACCESS TO WATER

There is a lack of water facilities and features like fountains, pools and splash pads to keep residents cool and hydrated in hot months.



LACK OF FACILITIES AND PROGRAMMING

Nearby parks lack basketball courts, pools and gathering spaces, and provide few activities for residents to participate in.



SAFETY CONCERNS

Residents don't feel safe at parks.



LACK OF CONNECTIVITY

Not enough trail networks or safe biking and pedestrian options.



LIMITED PARK MAINTENANCE

Restrooms and playgrounds need attention and repairs.

“My disability prevents me from movement in a lot of parks.”

“It is hot out here, and there are no community things to do.”

COMMUNITY ENGAGEMENT THEMES

COMMUNITY SUGGESTIONS TO INCREASE AND IMPROVE VISITS TO RURAL PARKS AND FACILITIES



MORE SHADE

Shaded seating, play areas and walking trails, and more trees between and around parks.



ACCESS TO WATER

Additional water facilities and features like swimming pools and splash pads to keep residents cool in hot months.



MORE PARKS AND GREEN SPACE

Reduce distance residents have to travel to parks by creating pocket parks and other local green space in the study area.



ENHANCED SAFETY MEASURES

Improved lighting and security at parks, more desert walking paths, and better maintenance of parks and trailheads.



IMPROVE ADA ACCESSIBILITY AT PARKS

Trails and parks with better wheelchair and disabled access.



IMPROVED INFRASTRUCTURE AND MAINTENANCE

More places to sit, gather with friends and family, hold events and walk dogs, and improved maintenance of restrooms, playgrounds, trails and at wildlife and natural areas.



ADDITIONAL PROGRAMS

More park activities and programs available to all ages, especially for seniors who rely on social activities provided by local parks.



AFFORDABLE PROGRAMMING AND EQUIPMENT

Provide access to low cost or free activities and equipment for residents to use and make it easier for groups to use facilities.



EXPANDED RECREATION FACILITIES

More basketball courts, swimming facilities, running tracks, community centers and gathering spaces.



MORE TRAILS FOR EQUESTRIAN AND PEDESTRIAN USE

Expand availability and maintenance of walking and equestrian trails.



EXPANDED EQUESTRIAN FACILITIES

Staging areas for horses and trailers at parks and trailheads.



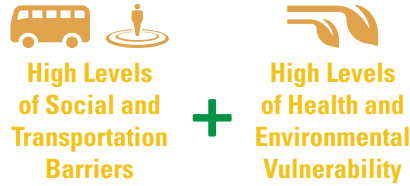
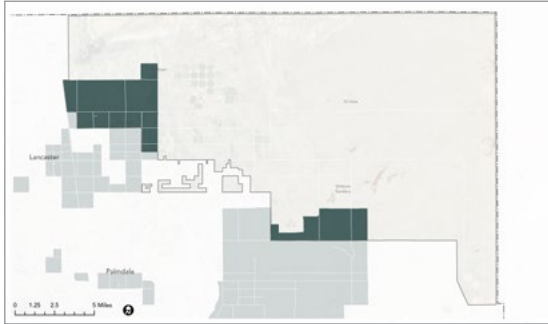
ENHANCED CONNECTIVITY

Provide greenways and trail networks that connect parks and provide safe transportation corridors for bicyclists, equestrians and pedestrians

“Our community needs a swimming pool and well maintained hiking/walking trails. We also need more activities for our senior population.”

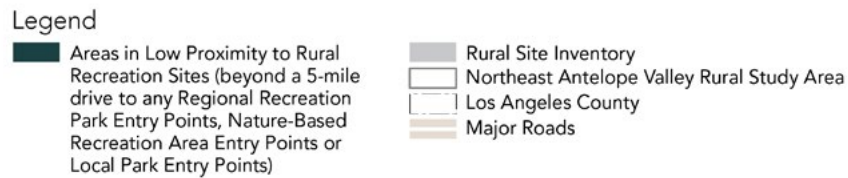
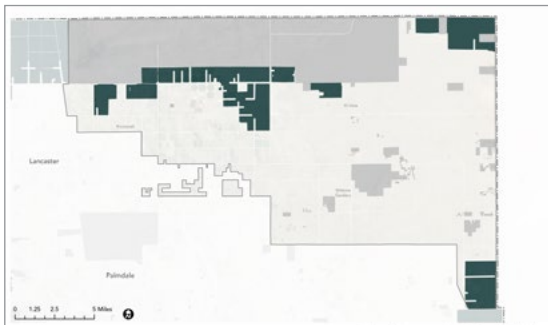
RURAL RECREATION PRIORITY ANALYSIS

Areas Experiencing the Highest Levels of Overall Population Vulnerability



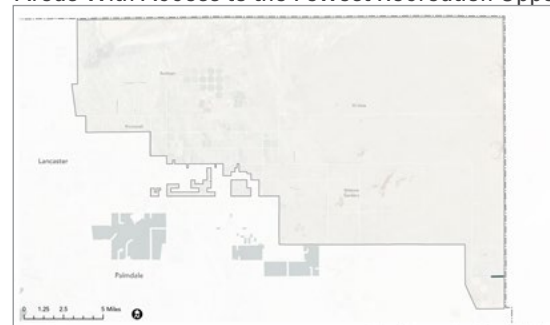
Map source: HPI, 2021; 2021 RRE Inventory

Areas Located in Low Proximity to Rural Recreation Sites



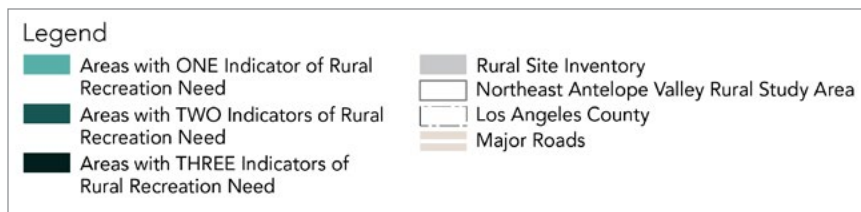
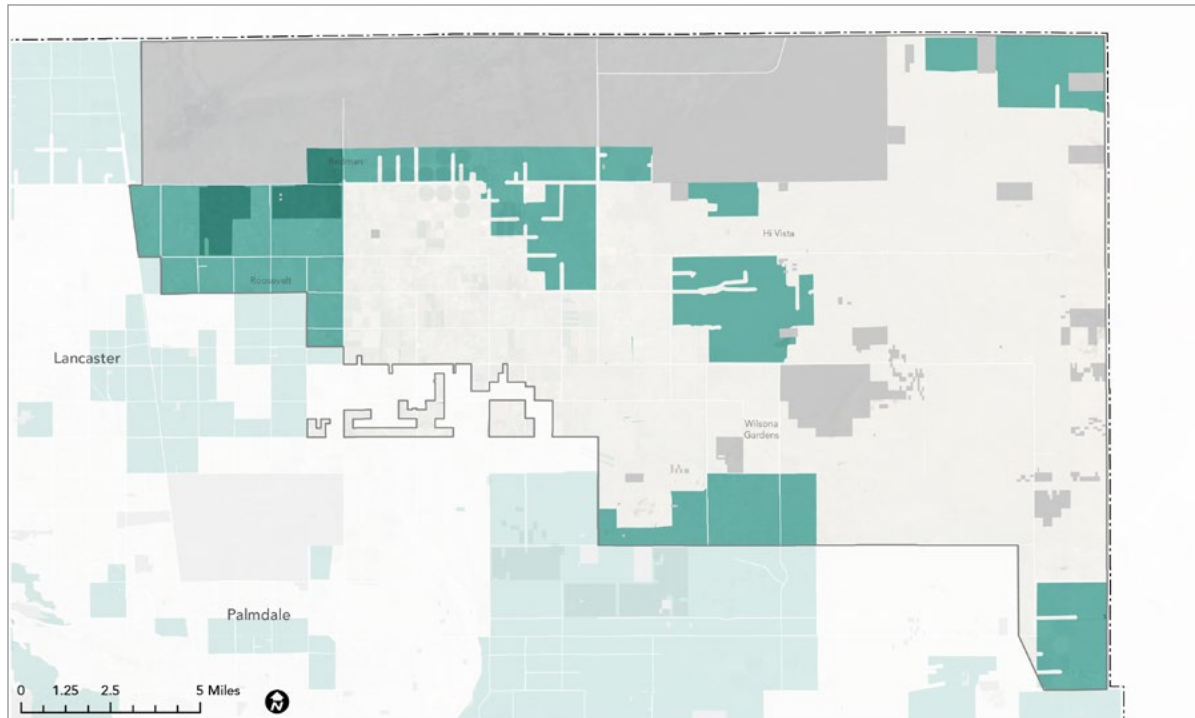
Map source: ArcGIS StreetMap Premium, 2021; 2021 RRE Inventory

Areas With Access to the Fewest Recreation Opportunity Types

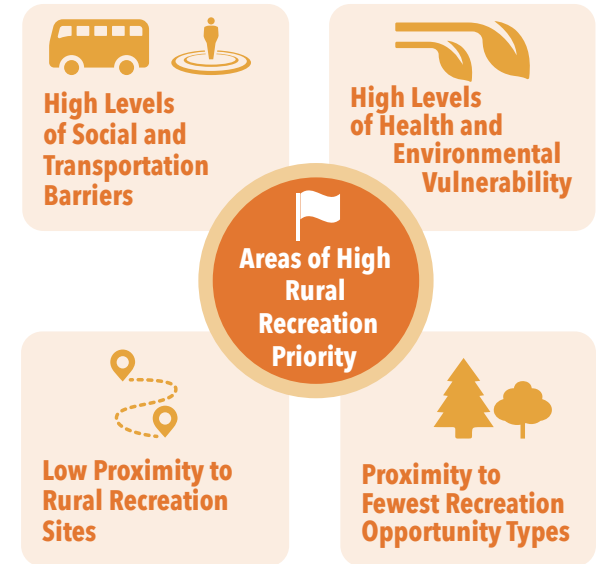


Map source: ArcGIS StreetMap Premium, 2021; 2021 RRE Inventory

RURAL RECREATION PRIORITY AREAS

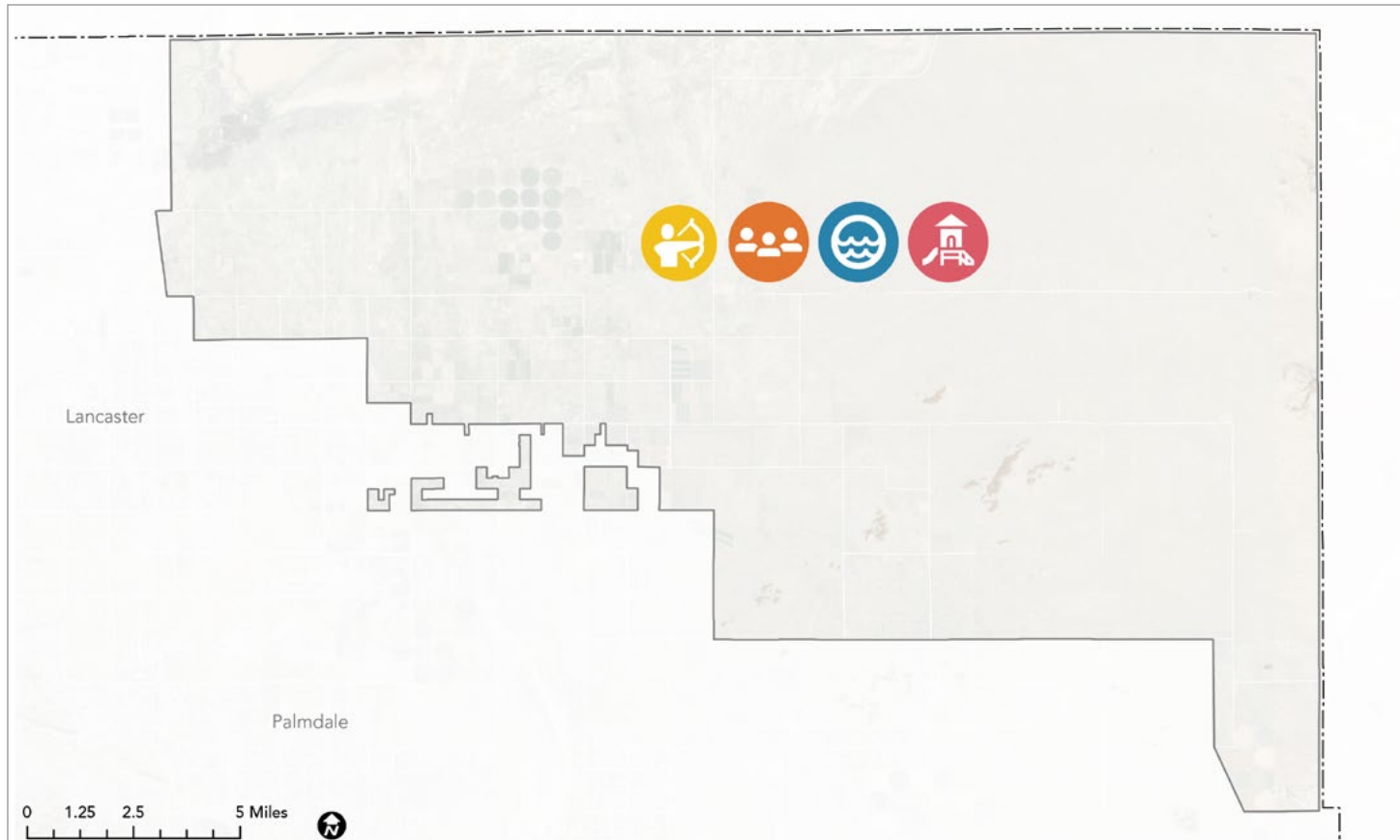


Areas with:



Map source: HPI, 2021; ArcGIS StreetMap Premium, 2021; 2021 RRE Inventory

PRIORITY PROJECT TYPES



PRIORITY PROJECTS

- » Playground
- » Fitness Zone
- » Multipurpose Field-Grass
- » Basketball Court
- » Picnic Shelters
- » Baseball Field
- » Swimming Pool
- » Tennis Court

Legend

- | | |
|-------------------------------------|--------------------------|
| Gathering Spaces | Overnight Accommodations |
| Sports Facilities | General Recreation |
| Experiential Learning Opportunities | Health and Fitness |
| Water-Based Recreation | Support Facilities |
| Trails and Pathways | |

Map source: PNA, 2016

Note: Priority projects are based on lists of priority projects from the 2016 PNA and updated public input gathered as part of 2022 RRE.