

we all need



PNA+

APPENDIX A

REGIONAL STUDY

AREA PROFILES

This project was previously called the Regional and Rural Edition (RRE) to emphasize its focus on regional and rural recreation needs and priorities. This project name was used during the data collection, and community engagement and outreach phases which occurred primarily in 2021. As this report was being completed in 2022, DPR decided to rename the project the Parks Needs Assessment Plus (PNA+) to clarify and better communicate that this project complements and offers new information not previously included in the 2016 Parks Needs Assessment (PNA), such as mapping and analyses related to population vulnerability, environmental benefits, environmental burdens, and priority areas for environmental conservation, environmental restoration, regional recreation, and rural recreation. (Please note that there remains some text and graphic references to the RRE in this document because that was the project name when some components of this study were completed.)

WESTSIDE REGIONAL STUDY AREA PROFILE

STUDY AREA ID #5

- » Study Area Description
- » Study Area Demographics
- » Population Vulnerability
- » Regional Site Inventory
- » Environmental Benefits
- » Environmental Burdens
- » Regional Recreation Parks
- » Regional Recreation Park Access
- » Nature-Based Recreation Areas
- » Nature-Based Recreation Area Access
- » Nature-Based Recreation Amenities
- » Regional Trails
- » Regional Trail Access
- » Regional Site Visitorship
- » Community Engagement Themes
- » Regional Recreation Priorities
- » Environmental Conservation and Restoration Priorities

Note

This profile is not intended to stand alone. For definitions of key terms and a full description of the analysis summarized within please refer to Chapters 3 and 4 of the main report as well as Appendix C: Technical Resources.



STUDY AREA DESCRIPTION

LOCATION

The Westside Study Area includes many neighborhoods that comprise the westside of the City of Los Angeles, the cities of Beverly Hills, Culver City, Santa Monica, and West Hollywood, and several unincorporated areas including Franklin Canyon, West Fox Hills, Ladera Heights, View Park, Windsor Hills and Marina del Rey.

GEOGRAPHY

The western portion of the study area is comprised of a string of beaches and Marina del Rey. The study area contains one of the few remaining wetlands in Ballona Creek. The eastern portion of the study area includes the Baldwin Hills and Kenneth Hahn State Recreation Area, which provide natural areas and recreational opportunities for area residents. The northeast corner of the study area is Griffith Park. Marina del Rey is the largest, manmade small boat harbors in the country and is surrounded by the City of Los Angeles.

STUDY AREA ISSUES

Significant environmental resources exist in the study area, most notably the Ballona Wetlands, which are threatened by potential sea level rise due to climate change. The study area faces traffic congestion and housing affordability issues. Also, there is a need to protect the coastline and fish and wildlife resources in this area. Large portions of the area, including Marina del Rey, are located in a liquefaction zone. Marina del Rey is also in a tsunami

hazard zone and is particularly susceptible to the negative impacts of climate change. In addition, most of Ladera Heights / View Park–Windsor Hills is in a Very High Fire Hazard Severity Zone. There is also a fault trace running through this community. In addition, the study area includes a large urban oil field in Baldwin Hills.

Traffic congestion is one of the biggest issues facing the study area. The Metro E Line (Expo) runs through Culver City to the westside of the City of Los Angeles, but the popular and populous northern areas are not served by rail transit. Another issue is the relatively high cost of land and housing. The study area is seen as a desirable place to live and do business, but there is little land for new development and costs are high. Large sections of the study area have higher density residential populations which increase the demand on existing open space and recreation.

PARK AND RECREATION RELATED ISSUES

- » Several communities located within the Westside Regional Study Area were identified as having Very High Park Need based on the 2016 Countywide Parks Needs Assessment. These study areas include Hollywood – South, Palms - Mar Vista - Del Rey, Venice, West Adams, West Hollywood and Westwood / Unincorporated Sawtelle VA Center.
- » A growing demand for outdoor recreation has resulted in overcrowding at some well-known recreation sites, such as the Baldwin Hills Scenic Overlook.
- » While the coastal and mountain portions of the study area provide opportunities for nature-based recreation, the central neighborhoods are not as well-served. The Expo Corridor Bike Path and the Park to Playa Trail help to bridge this gap by providing opportunities for active recreation and better access to parks and open spaces.
- » This study area has a low mileage of trails and has few opportunities to create new ones because it is highly urbanized.

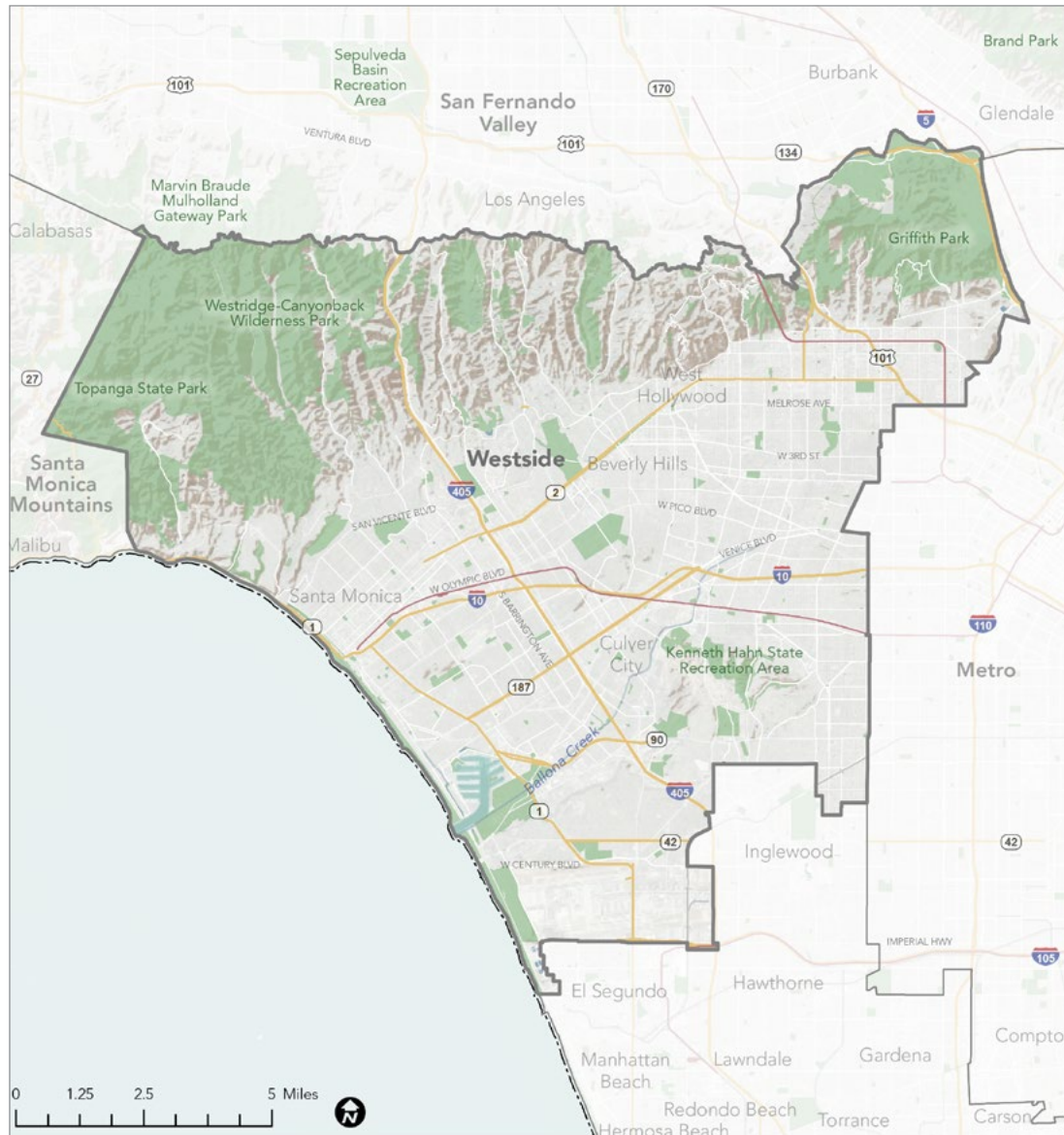
ANALYSIS FINDINGS

- » The most vulnerable populations are largely concentrated in the eastern part of the study area, including the Hollywood, Mid City, and Hyde Park neighborhoods.
- » The regional recreation facilities and trails in the area are relatively well served by public transportation due to an extensive transit network.
- » The area's recreation facilities experience a high rate of visitorship concentrated around Griffith Park and the Baldwin Hills parklands, including Kenneth Hahn State Recreation Area.
- » Areas with the highest Regional Recreation Need include neighborhoods surrounding Los Angeles International Airport due to its low visitorship levels and Mid City/Hollywood due to its vulnerable populations.
- » Only a few areas have been identified as priority areas for conservation, such as portions of the Pacific Palisades and Marina Del Rey.
- » Several areas, including West Adams, Westchester, Hollywood, and the Inglewood Oil Field have been identified as priority areas for restoration due to their relatively poor environmental health.
- » The study area only has 0.26 miles of regional trails per 1,000 residents, which is below the countywide average of 0.33.

COMMUNITY ENGAGEMENT THEMES

- » Lack of information, distance, overcrowding and limited park space and programs, safety and limited transit options are identified barriers to park use for residents who live in the study area.
- » Residents say they need more swimming facilities, nature centers, park and green spaces, dedicated use trails, outdoor event and community gathering spaces, and more and affordable programming.
- » Half of survey respondents say they are recreating outside more and 87% are looking to do that closer to home because of COVID.

WESTSIDE REGIONAL STUDY AREA

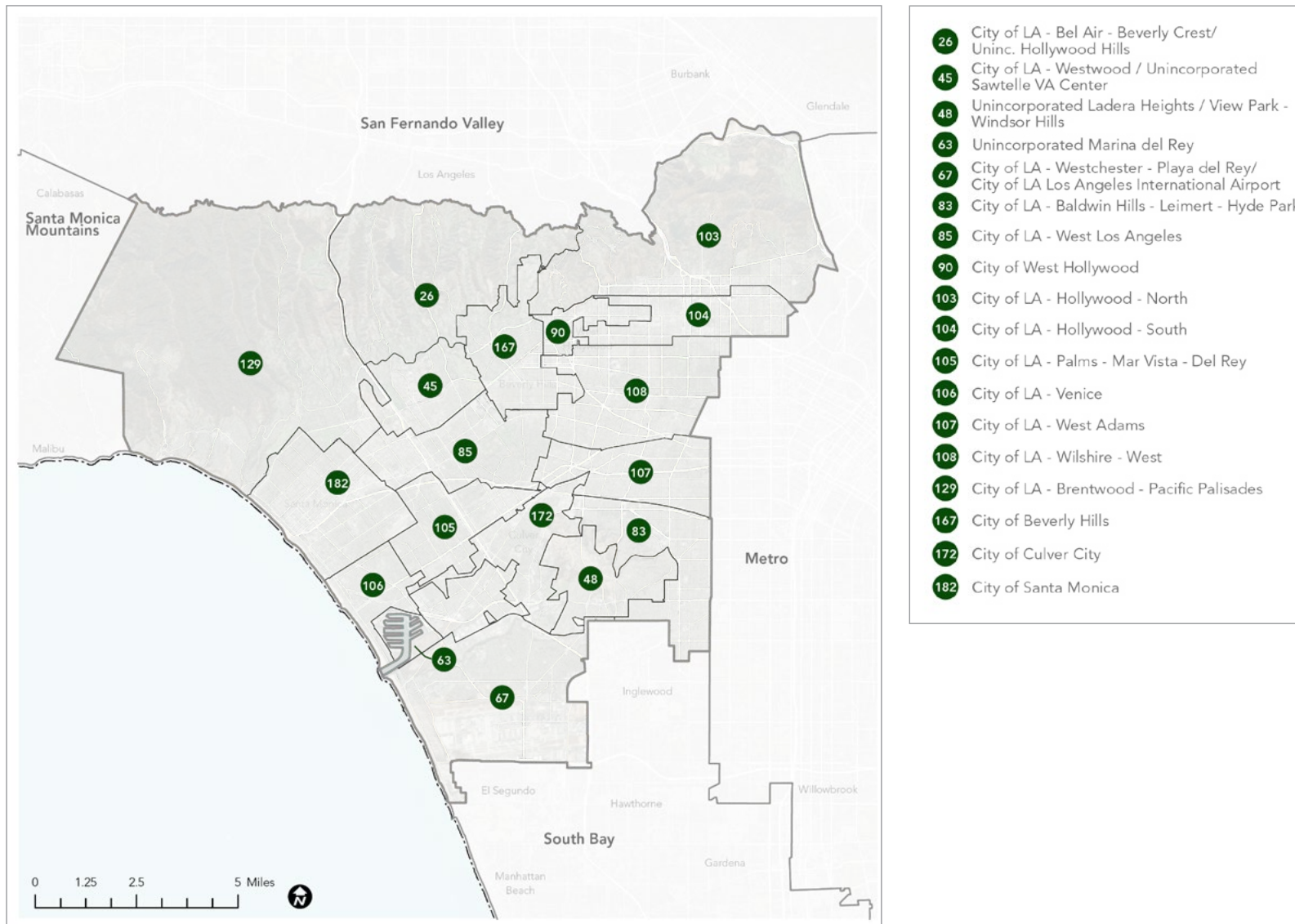


Map source: US Census, 2019; Esri, 2021; MIG, 2021; LAC GIS, 2021; USGS NHD, 2021

Note: All Regional Study Profile maps in this chapter include and refer to the sources listed here as basemap layers.

PNA STUDY AREAS LOCATED WITHIN REGIONAL STUDY AREA

This map shows the relationship of Regional Study Area to the boundaries of the study areas that were analyzed in the 2016 PNA.



Map source: PNA, 2016

STUDY AREA DEMOGRAPHICS

Population, Race, Ethnicity, Gender, Income, Age, and Education Level

Population	
Total	974,646

Race	Percentage
White	60.9%
Black or African American	11.8%
American Indian and Alaska Native	0.5%
Asian	11.9%
Native Hawaiian and Other Pacific Islander	0.1%
Some Other Race	10.2%
Two or More Races	4.5%
Total	100%

Ethnicity	Percentage
Hispanic or Latino	23.3%
Not Hispanic or Latino	76.7%
Total	100%

Income	Percentage
Less than \$25,000	23.3%
\$25,000-\$49,999	19.0%
\$50,000-\$74,999	15.3%
\$75,000-\$99,999	10.6%
\$100,000-\$150,000	13.0%
\$150,000+	18.8%
Total	100%

Gender	Percentage
Male	49.1%
Female	50.9%
Total	100%

Age	Percentage
Under 5 years	5.2%
5 to 9 years	4.2%
10 to 14 years	4.2%
15 to 19 years	4.9%
20 to 29 years	18.0%
30 to 39 years	17.7%
40 to 49 years	14.7%
50 to 59 years	12.4%
60 to 69 years	9.3%
70 to 79 years	5.2%
80+ years	4.2%
Total	100%

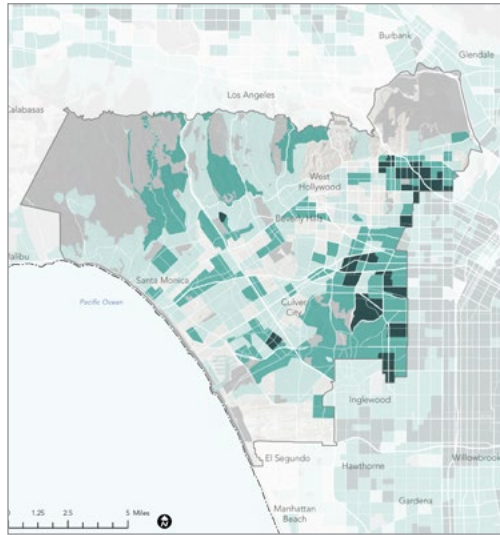
Education Level	Percentage
Less than 9th Grade	6.5%
9th-12th grade	5.0%
HS Grad	13.2%
Some college, no degree	18.2%
Associates	5.9%
Bachelors	31.0%
Graduate or professional degree	20.2%
Total	100%

Source: Planning Area Framework, The Los Angeles County General Plan 2035.
 2014 ACS 5-Year Estimate Subject t=Tables (<https://data.census.gov/cedsci/table?q=United%20States&g=0500000US06037%241400000&d=ACS%205-Year%20Estimates%20Subject%20Tables>)

Note: At the time that this report was prepared, 2020 Census results were not available.

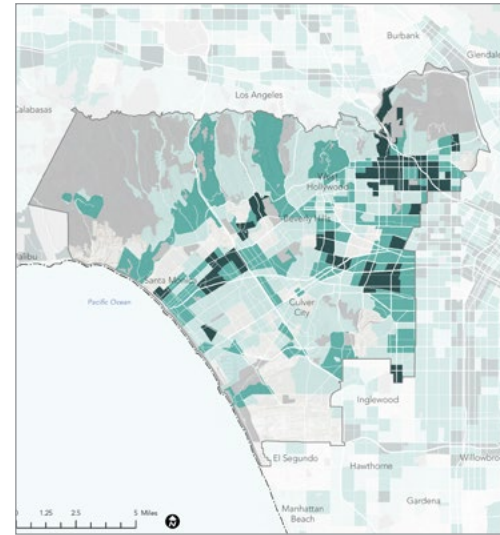
POPULATION VULNERABILITY DIMENSIONS

Social Barriers Dimension



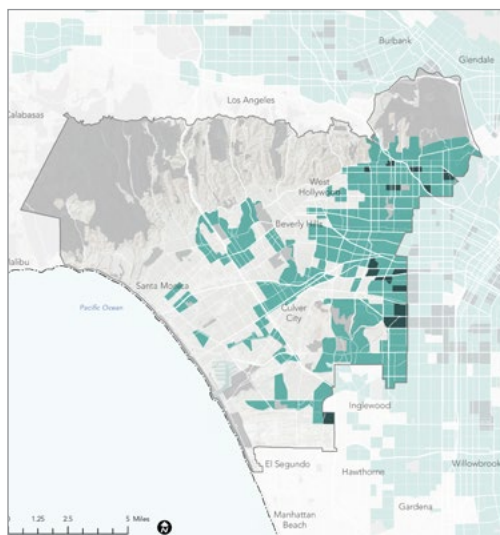
- Indicators:
- » High Poverty Rate
 - » High Unemployment Rate
 - » Majority-Minority Population
 - » High % of Young Children
 - » High % of Elderly Residents
 - » High % of Non-English-Speaking Residents
 - » Low % of Two-Parent Households

Transportation Barriers Dimension



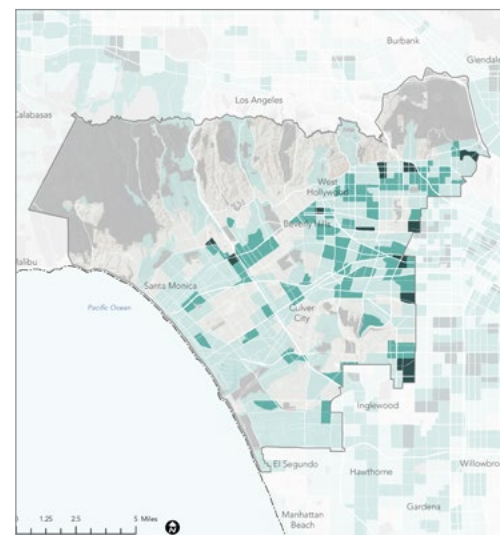
- Indicators:
- » Low Automobile Access
 - » Low Public Transit Access
 - » Low Active Commuting Rate
 - » High Traffic Density
 - » High Pedestrian Injuries

Health Vulnerability Dimension

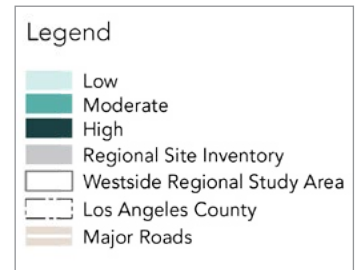


- Indicators:
- » Low Park Access
 - » Low Tree Canopy
 - » High % Impervious Surface
 - » High Number of Excessive Heat Days
 - » High Urban Heat Island Index Score

Environmental Vulnerability Dimension

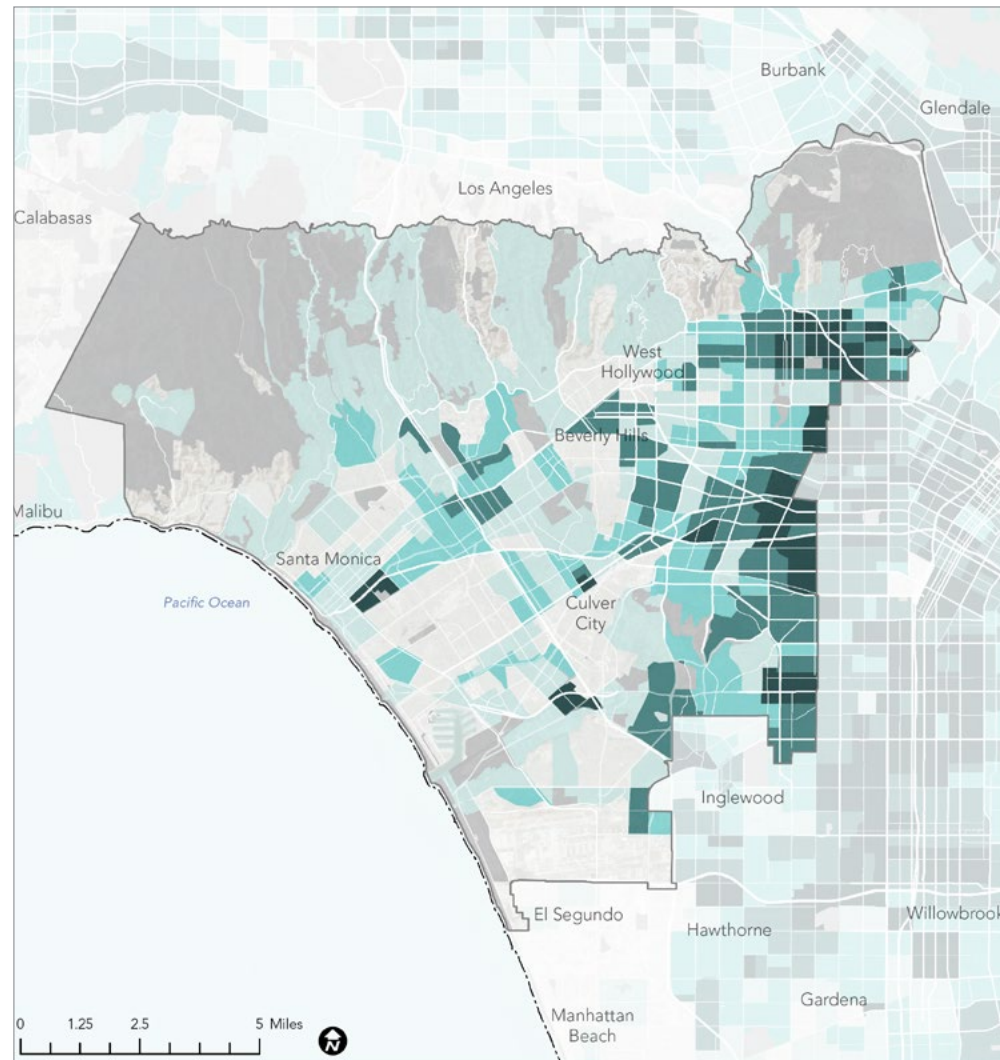


- Indicators:
- » Reduced Life Expectancy at Birth
 - » High Pollution Levels

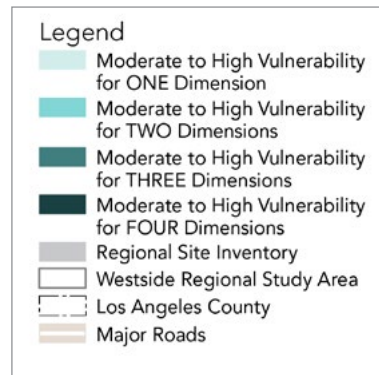


Maps source: HPI, 2021; 2021 RRE Inventory

COMPOSITE POPULATION VULNERABILITY



Map source: HPI, 2021; 2021 RRE Inventory



Dimensions
of Population
Vulnerability

Social Barriers Dimension:

Prevalence of:

- » Young Children
- » Elderly
- » Non-English Speaking Residents
- » Single Parent Households
- » Poverty
- » Unemployment
- » Majority-Minority Population

Transportation Barriers Dimension:

- » Limited Active Commuting
- » Limited Automobile Access
- » Limited Public Transit Access
- » High Traffic Density
- » High Pedestrian Injuries

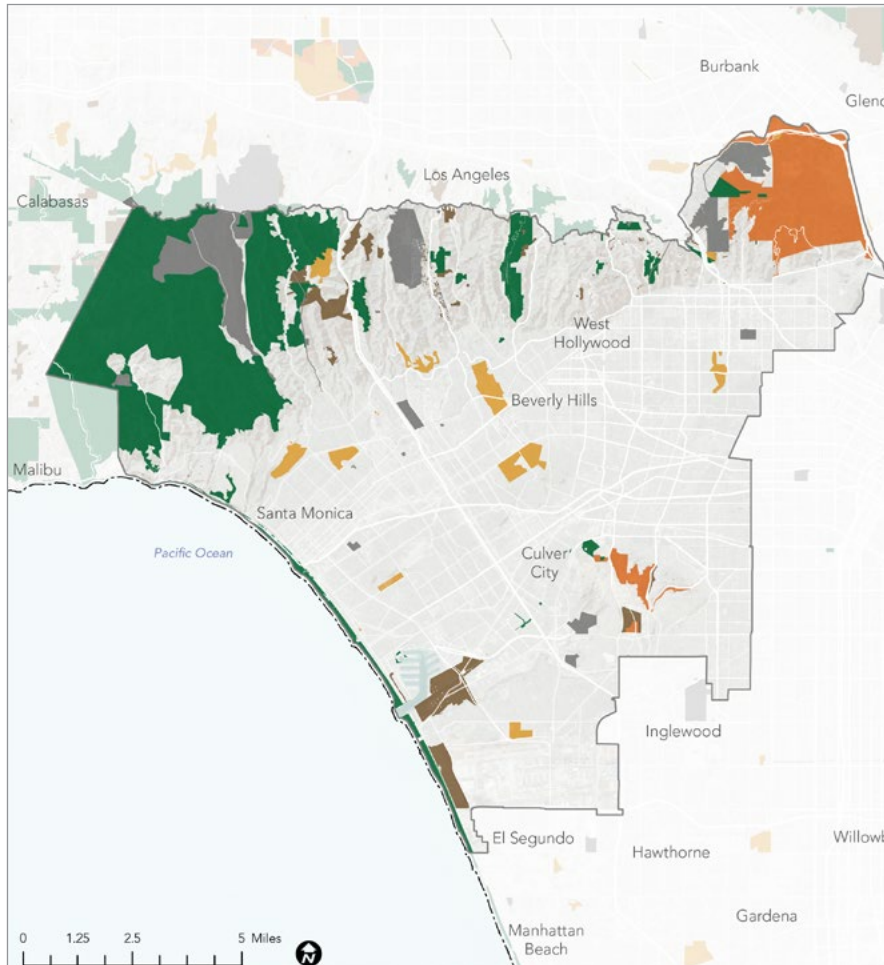
Health Vulnerability Dimension:

- » Reduced Life Expectancy at Birth
- » High Pollution Levels

Environmental Vulnerability Dimension:

- » Limited Park Access
- » Limited Tree Canopy
- » High % of Impervious Surface
- » High Excessive Heat Days
- » High Urban Heat Island Index Score

REGIONAL FACILITY METRICS



Map source: 2021 RRE Inventory



25,271

TOTAL ACRES OF REGIONAL FACILITIES



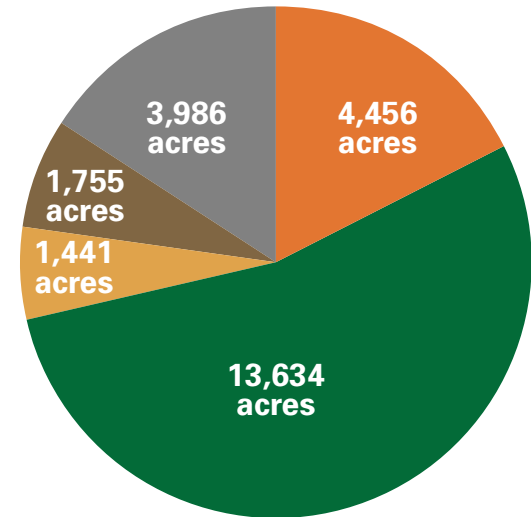
24%

OF THE TOTAL LAND AREA IS REGIONAL FACILITY LAND



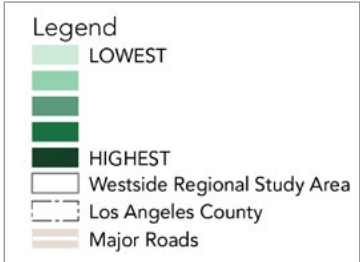
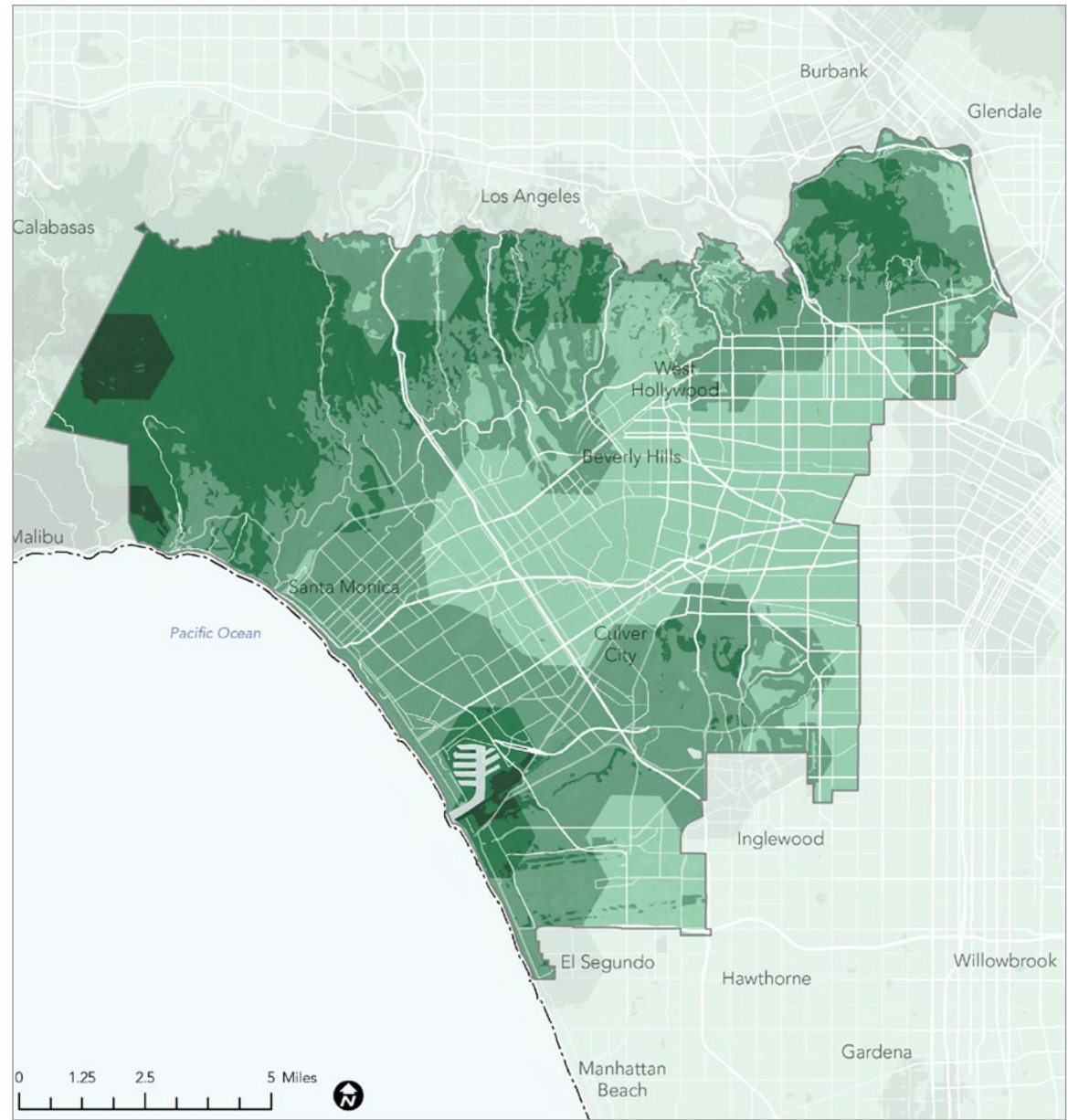
26

ACRES OF REGIONAL FACILITY LAND PER 1,000 RESIDENTS



- REGIONAL RECREATION PARKS
- NATURE-BASED RECREATION AREAS
- REGIONAL SPECIALIZED RECREATION AREAS
- CONSERVATION AREAS
- OTHER PUBLIC AND SEMI-PUBLIC OPEN SPACE

ENVIRONMENTAL BENEFITS



INDICATORS

Species Diversity. Species diversity data represent a count of the number of different species for amphibians, aquatic macroinvertebrates, birds, fish, mammals, plants, and reptiles.

Significant Habitat. Significant habitat values represent terrestrial habitats or vegetation types that are the focus of state, national, or locally legislated conservation laws, as well as key habitat areas that are essential to the survival and reproduction of focal wildlife species.

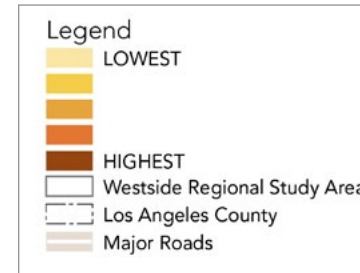
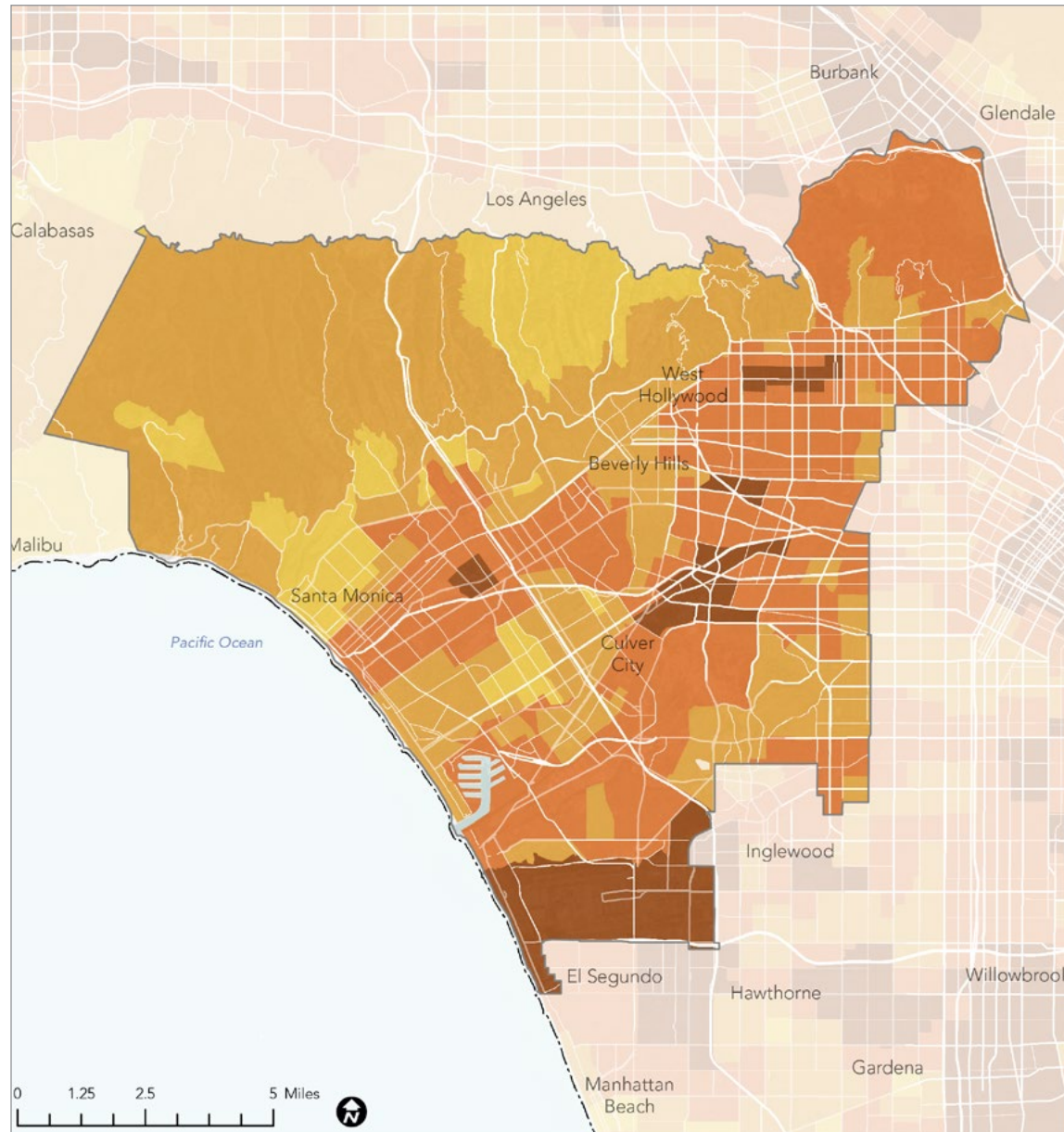
Habitat Connectivity. Habitat connectivity values summarize information on the presence of mapped terrestrial corridors or linkages and juxtaposition to large, contiguous, natural areas.

Proximity to Waterbody. Proximity to waterbody represents the distance to a water drainage network of the US. Proximity was categorized as less than 0.1 mile (highest benefit), 0.1 to 0.25 mile, 0.25 to 0.5 mile, 0.5 -1.0 mile, or greater than 1.0 mile (lowest benefit).

Habitat Type. Habitat types are divided into natural vegetation (high score), agriculture/barren/other (low score), and urban (lowest score).

Map source: CDFW ACE, 2021; USGS, 2021; COEHHA, 2021; CalFire FRAP 2015

ENVIRONMENTAL BURDENS



INDICATORS

Groundwater Threat. Groundwater threats come from many sources, including storage and disposal of hazardous materials on land and in underground storage tanks, dairy farms, concentrated animal-feeding operations, and water ponds generated for oil and gas development also pose threats to groundwater reserves.

Hazardous Waste. Hazardous waste facilities and generators pose widespread concerns for both human health and the environment from sites that serve to process or dispose of hazardous waste.

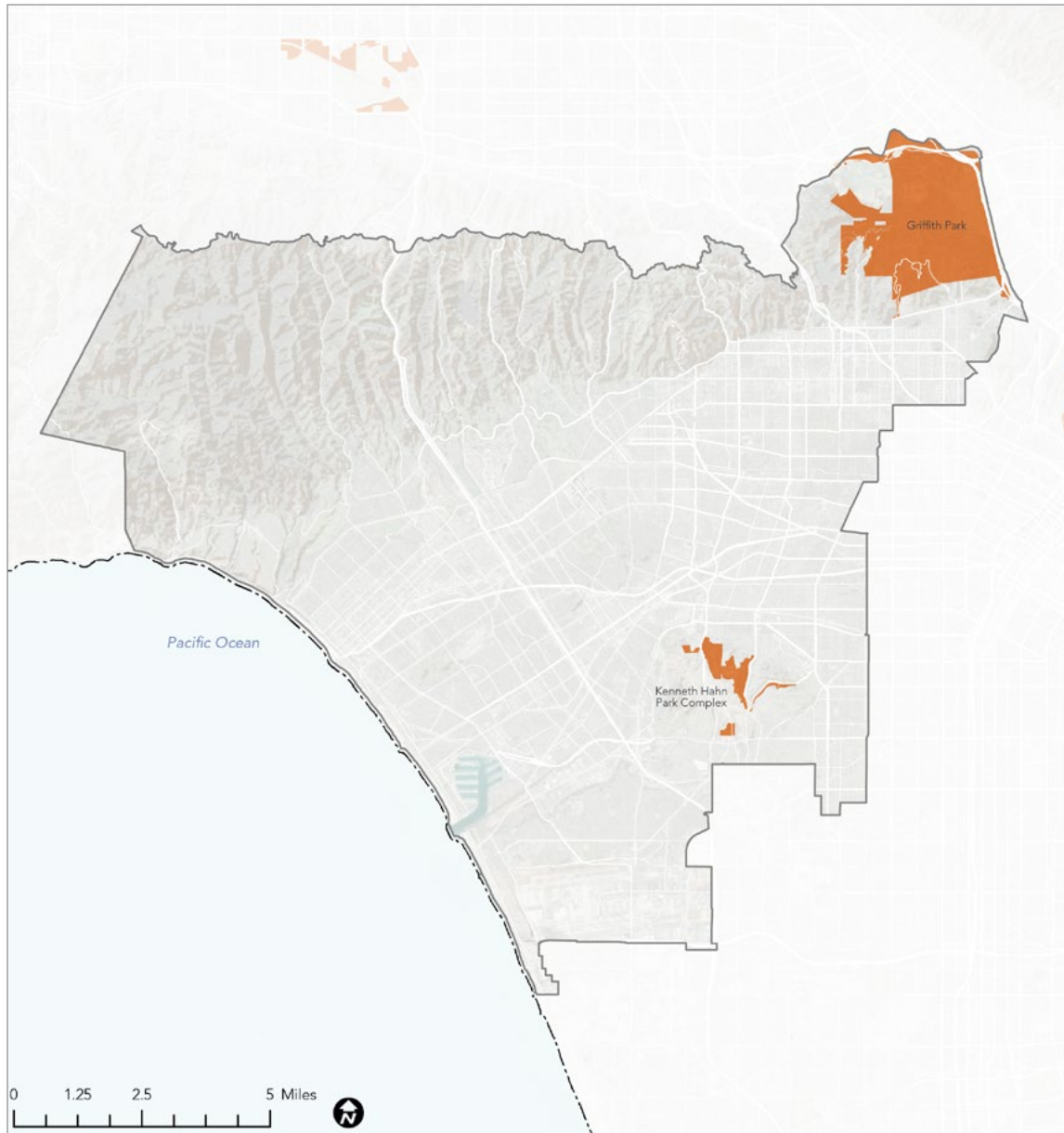
Drinking Water. Drinking water contaminants are introduced into drinking water sources in many ways, including natural occurrence, accidental discharge, industrial release, agricultural runoff and certain water disinfection methods.

PM2.5. Fine particulate matter (PM) that measures 2.5 microns or less in width represents a major contributor to air pollution and has been shown to cause significant adverse health effects, including heart and lung disease.

Pollution Burden. Pollution burden is composite indicator derived from seven exposure indicators (ozone and PM2.5 concentrations, diesel PM emissions, drinking water contaminants, children’s lead risk from housing, pesticide use, toxic releases from facilities, and traffic density) and five environmental effects indicators (cleanup sites, impaired water bodies, groundwater threats, hazardous waste facilities and generators, and solid waste sites and facilities).

Map source: CDFW ACE, 2021; USGS, 2021; COEHHA, 2021; CalFire FRAP 2015

REGIONAL RECREATION PARKS



Map source: 2021 RRE Inventory

Legend

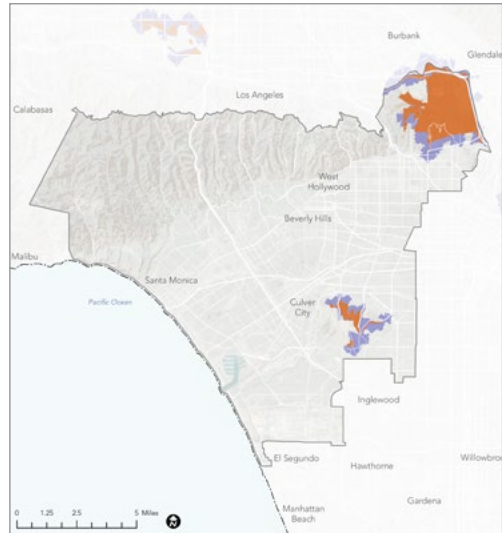
- Regional Recreation Park
- Westside Regional Study Area
- Los Angeles County
- Major Roads

4,456
ACRES OF REGIONAL RECREATION PARKLAND

4.6
ACRES OF REGIONAL RECREATION PARKLAND PER 1,000 STUDY AREA RESIDENTS

REGIONAL RECREATION PARK ACCESS

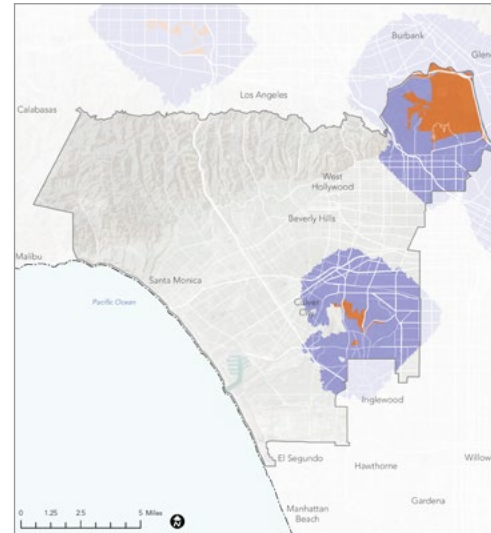
Walking Distance (0.5 miles from entry)



- Legend**
- Areas within a 0.5-mile walk of a Regional Recreation Park Entry
 - Regional Recreation Park
 - Westside Regional Study Area
 - Los Angeles County
 - Major Roads

2% **OF RESIDENTS LIVE WITHIN WALKING DISTANCE OF A REGIONAL RECREATION PARK**

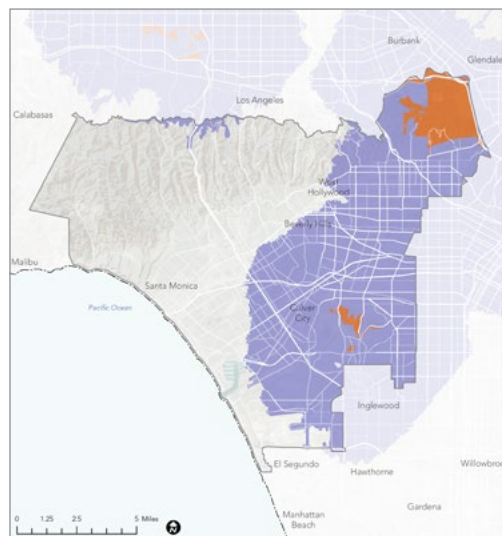
Cycling Distance (2.5 miles from entry)



- Legend**
- Areas within a 2.5-mile bicycle ride of a Regional Recreation Park Entry
 - Regional Recreation Park
 - Westside Regional Study Area
 - Los Angeles County
 - Major Roads

31% **OF RESIDENTS LIVE WITHIN CYCLING DISTANCE OF A REGIONAL RECREATION PARK**

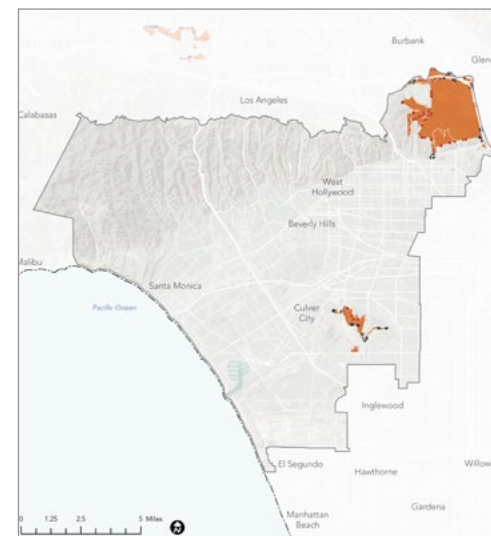
Driving Distance (5 miles from entry)



- Legend**
- Areas within a 5-mile drive of a Regional Recreation Park Entry
 - Regional Recreation Park
 - Westside Regional Study Area
 - Los Angeles County
 - Major Roads

69% **OF RESIDENTS LIVE WITHIN DRIVING DISTANCE OF A REGIONAL RECREATION PARK**

Transit Service (entry is within 0.5 miles of transit stop)

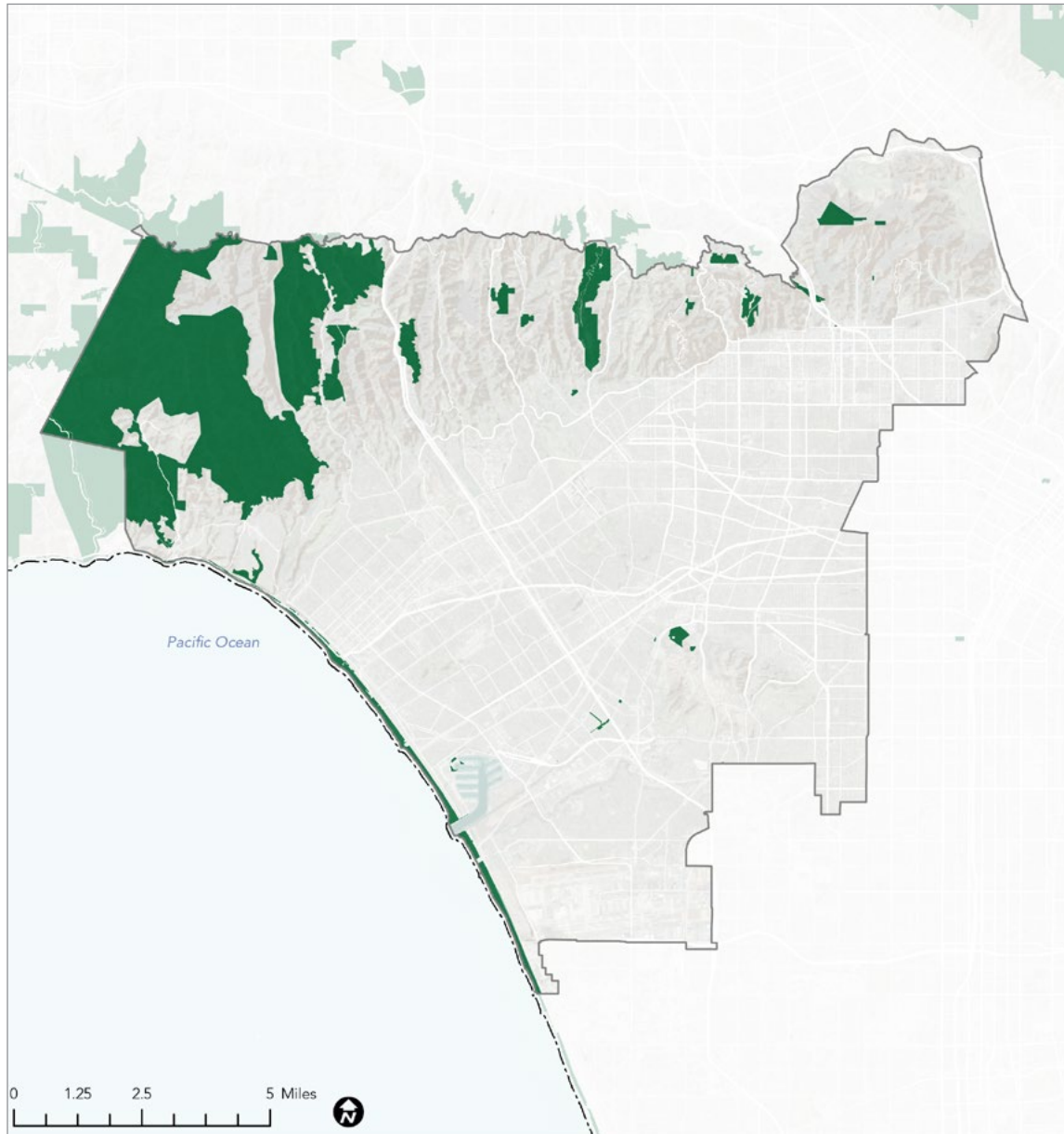


- Legend**
- Entry Point Served by Public Transit (located within a half mile of a Transit Stop)
 - Entry Point Not Served by Public Transit (not located within a half mile of a Transit Stop)
 - Regional Recreation Park
 - Westside Regional Study Area
 - Los Angeles County
 - Major Roads

75% **OF REGIONAL RECREATION PARK ENTRANCES ARE LOCATED WITHIN A HALF-MILE WALK OF A PUBLIC TRANSIT STOP**

Maps source: ArcGIS StreetMap Premium, 2021; 2021 RRE Inventory

NATURE-BASED RECREATION AREAS



Map source: 2021 RRE Inventory



13,364

ACRES OF NATURE-BASED RECREATION AREA LAND

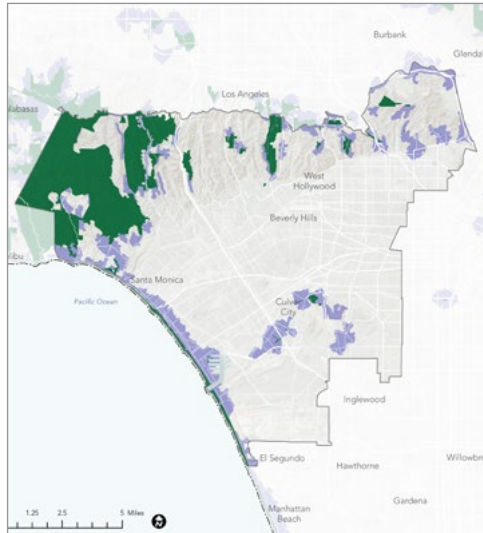


14

ACRES OF NATURE-BASED RECREATION AREA LAND PER 1,000 REGIONAL STUDY AREA RESIDENTS

NATURE-BASED RECREATION AREA ACCESS

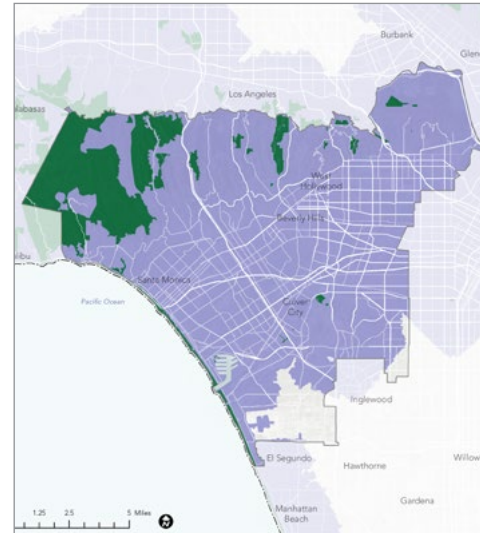
Walking Distance (0.5 miles from entry)



- Legend**
- Areas within a 0.5-mile walk of a Nature-Based Recreation Area Entry
 - Nature-Based Recreation Area
 - Westside Regional Study Area
 - Los Angeles County
 - Major Roads

10% **OF STUDY AREA RESIDENTS LIVE WITHIN WALKING DISTANCE OF A NATURE-BASED RECREATION AREA**

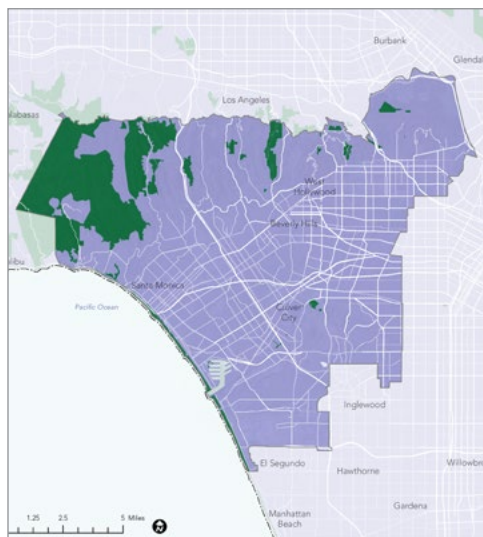
Cycling Distance (2.5 miles from entry)



- Legend**
- Areas within 2.5-mile bicycle ride of a Nature-Based Recreation Area Entry
 - Nature-Based Recreation Area
 - Westside Regional Study Area
 - Los Angeles County
 - Major Roads

100% **OF STUDY AREA RESIDENTS LIVE WITHIN CYCLING DISTANCE OF A NATURE-BASED RECREATION AREA**

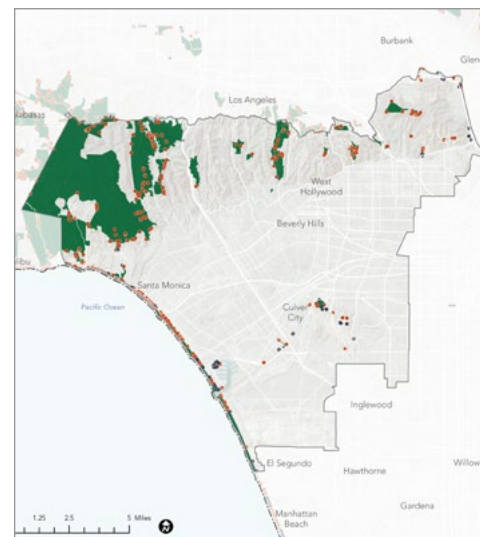
Driving Distance (5 miles from entry)



- Legend**
- Areas within a 5-mile drive of a Nature-Based Recreation Area Entry
 - Nature-Based Recreation Area
 - Westside Regional Study Area
 - Los Angeles County
 - Major Roads

100% **OF STUDY AREA RESIDENTS LIVE WITHIN DRIVING DISTANCE OF A NATURE-BASED RECREATION AREA**

Transit Service (entry is within 0.5 miles of transit stop)



- Legend**
- Entry Point Served by Public Transit (located within a half mile of a Transit Stop)
 - Entry Point Not Served by Public Transit (not located within a half mile of a Transit Stop)
 - Nature-Based Recreation Area
 - Westside Regional Study Area
 - Los Angeles County
 - Major Roads

18% **OF NATURE-BASED RECREATION AREA ENTRY POINTS AREA SERVED BY PUBLIC TRANSIT**

Maps source: ArcGIS StreetMap Premium, 2021; 2021 RRE Inventory

REGIONAL RECREATION AMENITIES



GATHERING SPACES



0
Group Picnic Areas



36
Individual Picnic Areas



6
Indoor Event Spaces



13
Outdoor Event Spaces



SPORTS FACILITIES



0
Shooting Ranges



0
Archery Ranges



0
Snowsport Facilities



TRAILS AND PATHWAYS



0
Rock Climbing Areas



317
Trailheads



WATER-BASED RECREATION



10
Boating Areas



10
Swimming Areas



8
Watersport Facilities



17
Waterfront Access Areas



18
Fishing Areas



OVERNIGHT ACCOMMODATIONS



8
Tent Campsites



223
RV Campsites



EXPERIENTIAL LEARNING OPPORTUNITIES



9
Visitor Centers



6
Environmental Learning Facilities



3
Gardens



SUPPORT FACILITIES



11
Concessions



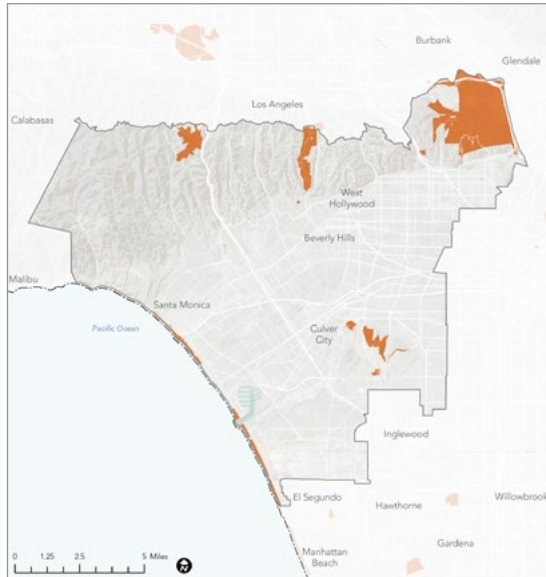
23,775
Parking Spaces



237
Restrooms

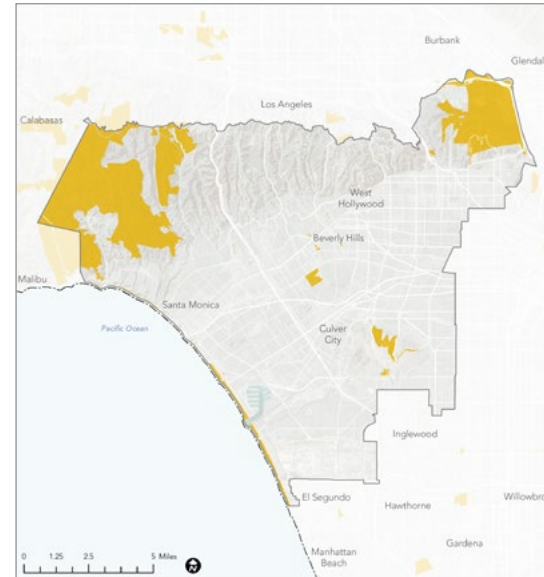
REGIONAL RECREATION OPPORTUNITY TYPES

Gathering Spaces



- Legend**
- Regional Sites with Gathering Spaces
 - Westside Regional Study Area
 - Los Angeles County
 - Major Roads

Sports Facilities



- Legend**
- Regional Sites with Sports Facilities
 - Westside Regional Study Area
 - Los Angeles County
 - Major Roads

Trails and Pathways



- Legend**
- Regional Sites with Trails and Pathways
 - Regional Trails
 - Regional Bikeways
 - Westside Regional Study Area
 - Los Angeles County
 - Major Roads

Water-Based Recreation

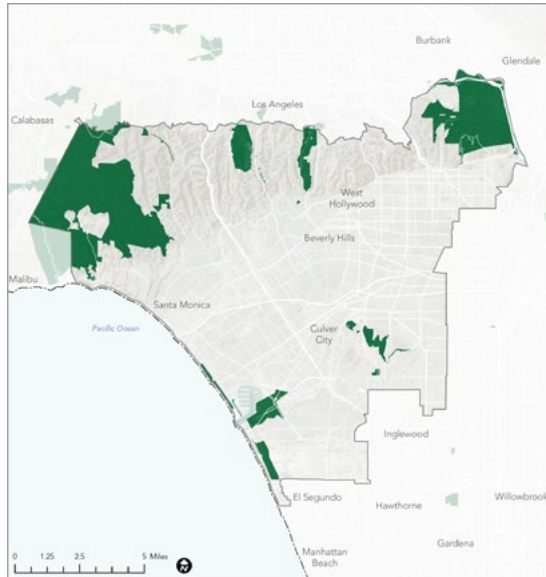


- Legend**
- Regional Sites with Water-Based Recreation
 - Westside Regional Study Area
 - Los Angeles County
 - Major Roads

Maps source: 2021 RRE Inventory

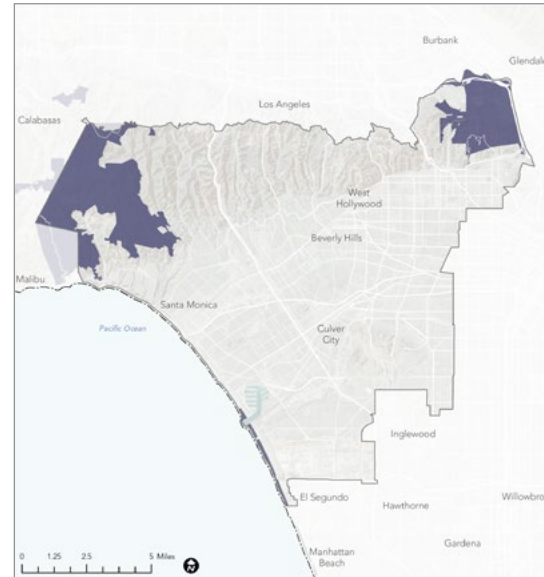
REGIONAL RECREATION AMENITY ANALYSIS

Experiential Learning Opportunities



- Legend**
- Regional Sites with Experiential Learning Opportunities
 - Westside Regional Study Area
 - Los Angeles County
 - Major Roads

Overnight Accommodations



- Legend**
- Regional Sites with Overnight Accommodations
 - Westside Regional Study Area
 - Los Angeles County
 - Major Roads

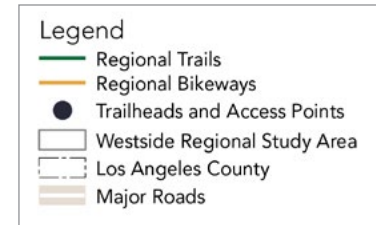
Support Facilities



- Legend**
- Regional Sites with Support Facilities
 - Westside Regional Study Area
 - Los Angeles County
 - Major Roads

Maps source: 2021 RRE Inventory

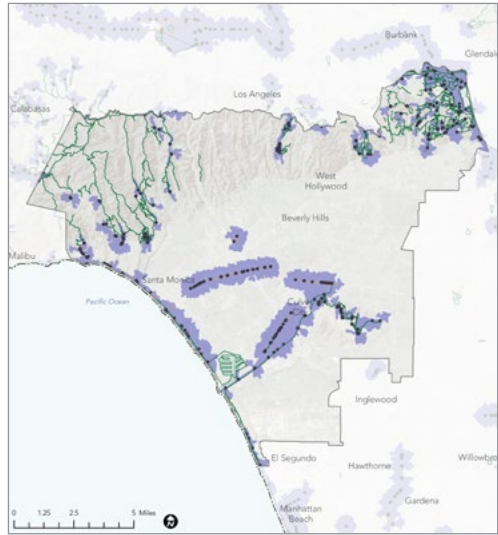
REGIONAL TRAILS



Map source: LAC DPR, 2021; 2021 RRE Inventory

REGIONAL TRAIL ACCESS

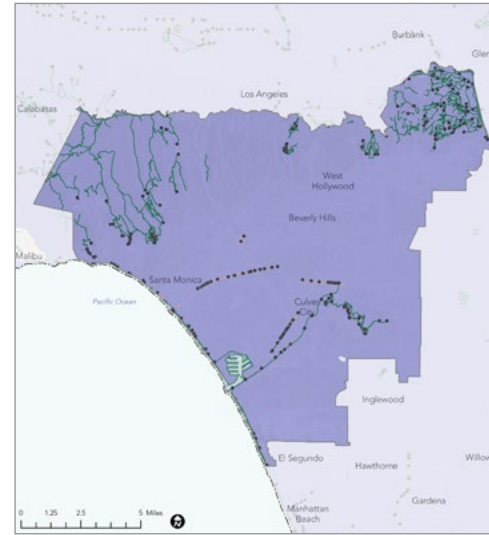
Walking Distance (0.5 miles from entry)



- Legend**
- Areas within a 0.5-mile walk of a Trailhead or Access Point
 - Regional Trails
 - Regional Bikeways
 - Trailheads and Access Points
 - Westside Regional Study Area
 - Los Angeles County
 - Major Roads

17% **OF STUDY AREA RESIDENTS LIVE WITHIN WALKING DISTANCE OF A TRAILHEAD**

Cycling Distance (2.5 miles from entry)



- Legend**
- Areas within a 2.5-mile bicycle ride of a Trailhead or Access Point
 - Regional Trails
 - Regional Bikeways
 - Trailheads and Access Points
 - Westside Regional Study Area
 - Los Angeles County
 - Major Roads

100% **OF STUDY AREA RESIDENTS LIVE WITHIN CYCLING DISTANCE OF A TRAILHEAD**

Driving Distance (5 miles from entry)



- Legend**
- Areas within a 5-mile drive of a Trailhead or Access Point
 - Regional Trails
 - Regional Bikeways
 - Trailheads and Access Points
 - Westside Regional Study Area
 - Los Angeles County
 - Major Roads

100% **OF STUDY AREA RESIDENTS LIVE WITHIN DRIVING DISTANCE OF A TRAILHEAD**

Transit Service (entry is within 0.5 miles of transit stop)

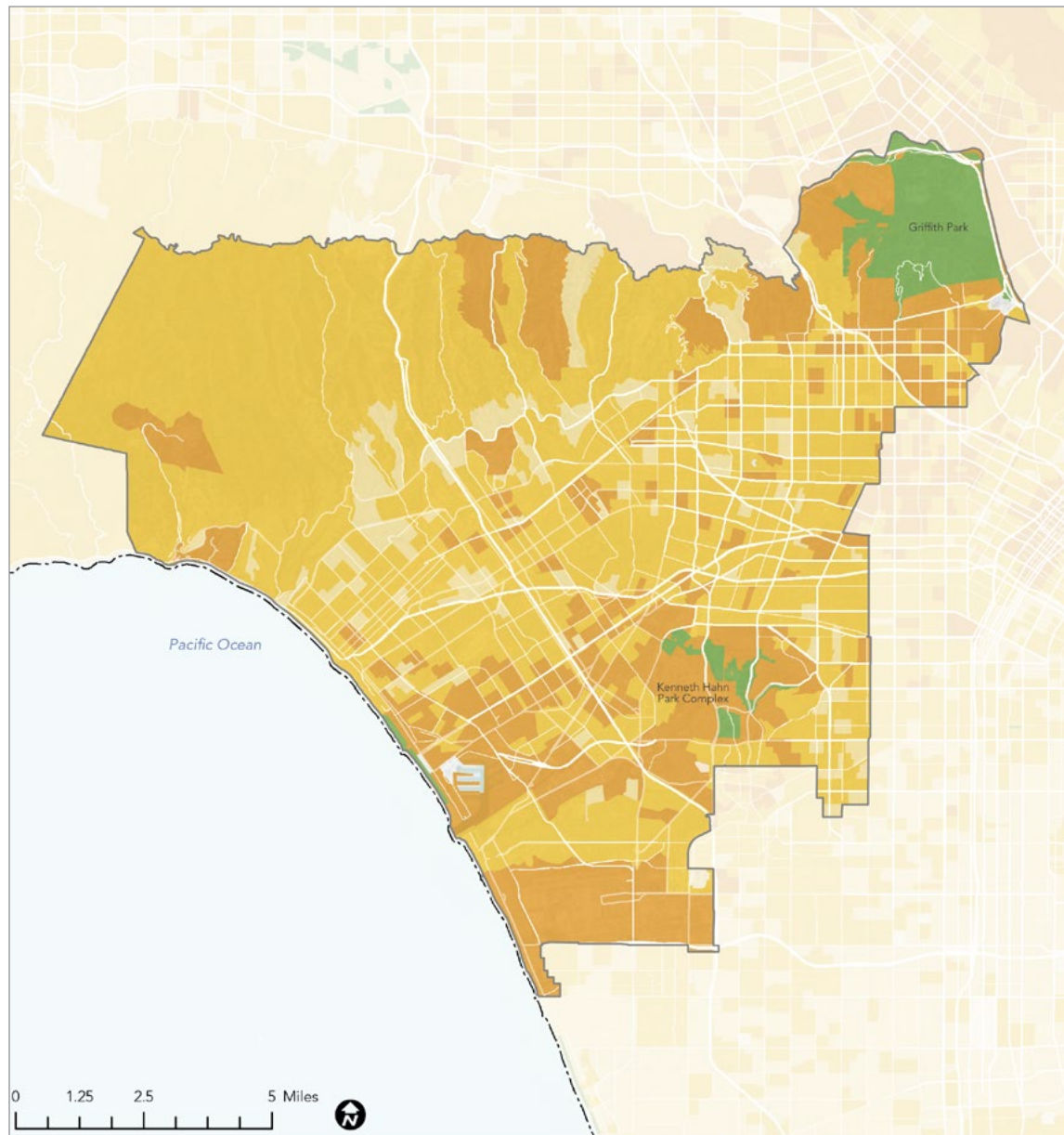


- Legend**
- Trailhead or Access Point Served by Public Transit (located within a half mile walk of a Transit Stop)
 - Trailhead or Access Point Not Served by Public Transit (not located within a half mile walk of a Transit Stop)
 - Regional Trails
 - Regional Bikeways
 - Westside Regional Study Area
 - Los Angeles County
 - Major Roads

38% **OF TRAILHEADS ARE SERVED BY PUBLIC TRANSIT**

Maps source: LAC DPR, 2021; ArcGIS StreetMap Premium, 2021; 2021 RRE Inventory

REGIONAL SITE VISITORSHIP



REGIONAL SITES INCLUDED IN VISITORSHIP ANALYSIS

- » Kenneth Hahn Park Complex
- » Venice City Beach
- » Griffith Park
- » Aubrey E. Austin Jr. Park and North Jetty

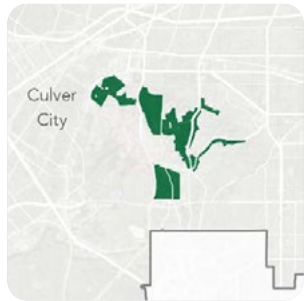
Map source: Unacast, 2021; 2021 RRE Inventory

VISITORSHIP REPORT 2019 - 2020

Kenneth Hahn State Recreation Area



VITAL STATISTICS



KEY PARK AMENITIES

- Community Center
- Children's Play Areas
- Group Picnic Areas
- Basketball Court
- Fishing Lake
- Baseball Diamonds
- Multi-Purpose Field
- Sand Volleyball Court

DESCRIPTION

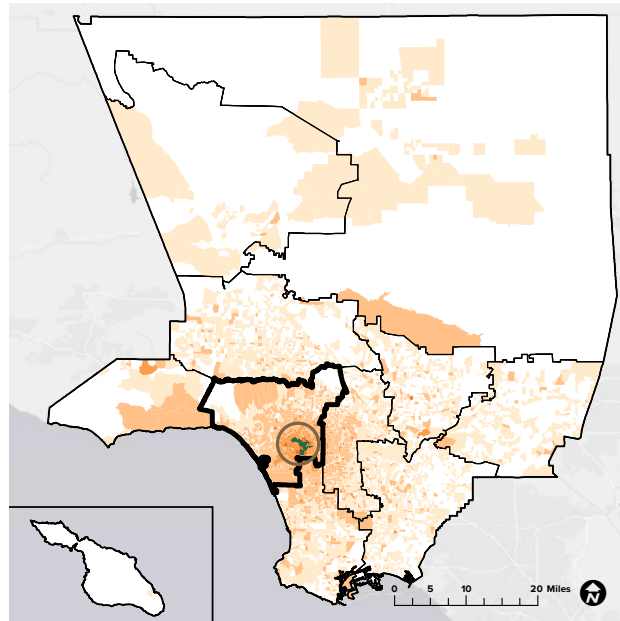
Kenneth Hahn State Recreation Area and the adjacent Rueben Ingold Park, Norman O. Houston Park, and Stocker Corridor are located between downtown Los Angeles and LAX. This area includes large areas of native coastal sage scrub habitat, lawns and landscaped areas, picnic sites, tot lots, fishing lake, lotus pond, community center and miles of trails, including portions of the Park to Playa Trail.

WEBSITE

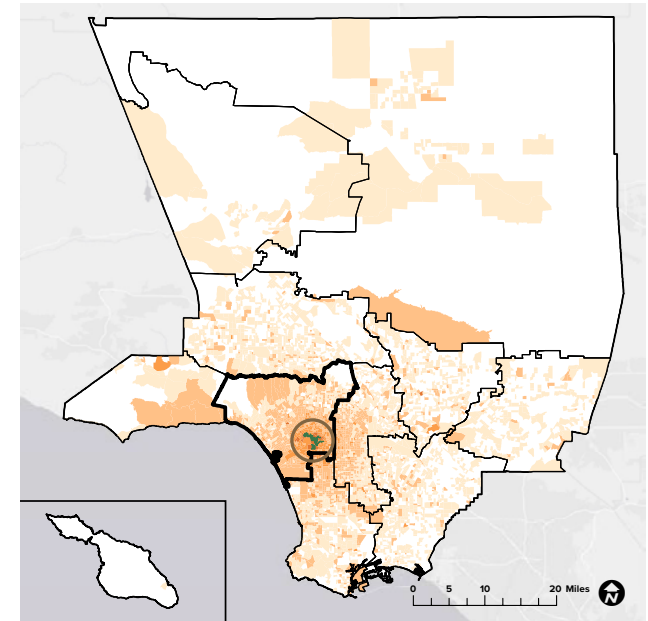
www.parks.lacounty.gov/kenneth-hahn-state-recreation-area/

ANNUAL VISITORSHIP / VISITOR ORIGIN

2019
1,308,700 visitors



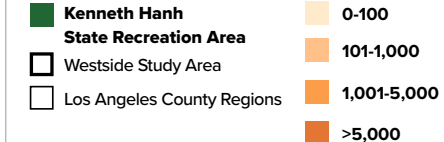
2020
994,154 visitors



76%
originated from within LA County

24%
originated from outside LA County

45%
originated from Westside Study Area



80%
originated from within LA County

20%
originated from outside LA County

48%
originated from Westside Study Area

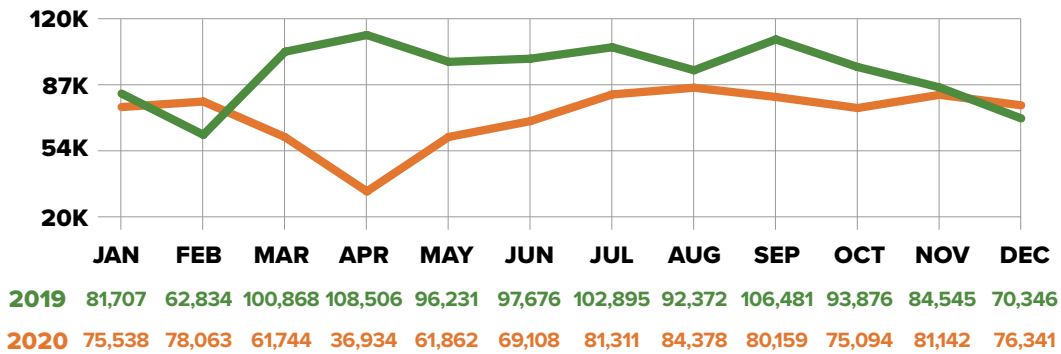
Sources: Unacast 2021 (LA County DPR 2020, LA County PNA 2016, ESRI 2021)

VISITORSHIP REPORT 2019 - 2020

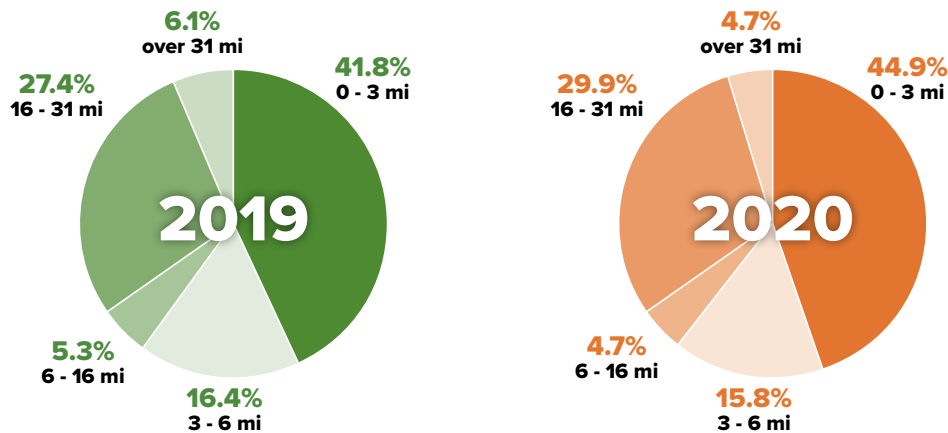
Kenneth Hahn State Recreation Area



MONTHLY VISITORSHIP



TRAVEL DISTANCE



DEMOGRAPHICS

EDUCATION

	High School Diploma	Some College, No Degree	Associates Degree	Bachelors Degree	Masters Degree & Above
2019	14.0%	18.2%	5.4%	19.9%	9.3%
2020	14.0%	18.8%	5.4%	19.4%	9.9%

INCOME

	Less than \$24,999	\$25,000 - \$49,999	\$50,000 - \$74,999	\$75,000 - \$99,999	\$100,000 - \$124,999	More than \$125,000
2019	22.3%	17.6%	19.7%	11.3%	8.0%	20.9%
2020	22.6%	17.3%	20.2%	11.5%	8.0%	20.2%

GENDER IDENTITY

	Male	Female
2019	52.8%	47.1%
2020	53.1%	46.8%

RACE/ETHNICITY

	Amer-Indian	Asian	Black	Hispanic	White	2 or More	Other
2019	0.2%	10.2%	23.3%	35.8%	26.9%	2.9%	0.6%
2020	0.2%	10.6%	23.8%	36.1%	25.8%	2.9%	0.5%

AGE

	18-29	30-39	40-49	50-59	60-69	70-79	80+
2019	22.3%	19.3%	18.0%	17.0%	12.1%	6.7%	4.5%
2020	21.8%	19.5%	18.4%	16.7%	12.2%	6.8%	4.6%

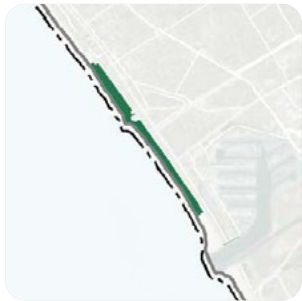
VISITORSHIP REPORT 2019 - 2020

Venice City Beach



VITAL STATISTICS

ANNUAL VISITORSHIP / VISITOR ORIGIN



KEY PARK AMENITIES

- Beach Access
- Recreation Center
- Outdoor Gym
- Skate Park
- Children's Play Areas
- Basketball Courts
- Paddle Tennis Courts
- Handball Courts
- Biking Path
- Fishing Pier

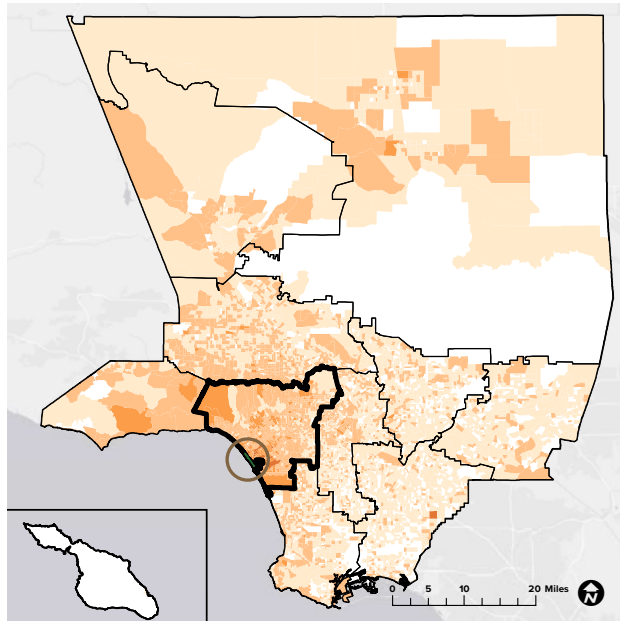
DESCRIPTION

Located on the west side of Los Angeles, Venice Beach is home to the famed Venice Beach Boardwalk, a two-mile stretch filled with street performers, vendors, and restaurants. Along with the boardwalk, visitors can access a range of amenities including a recreation center, basketball, paddle tennis and handball, outdoor gym, fishing pier, skate plaza, bike path, play areas, beach, and various events.

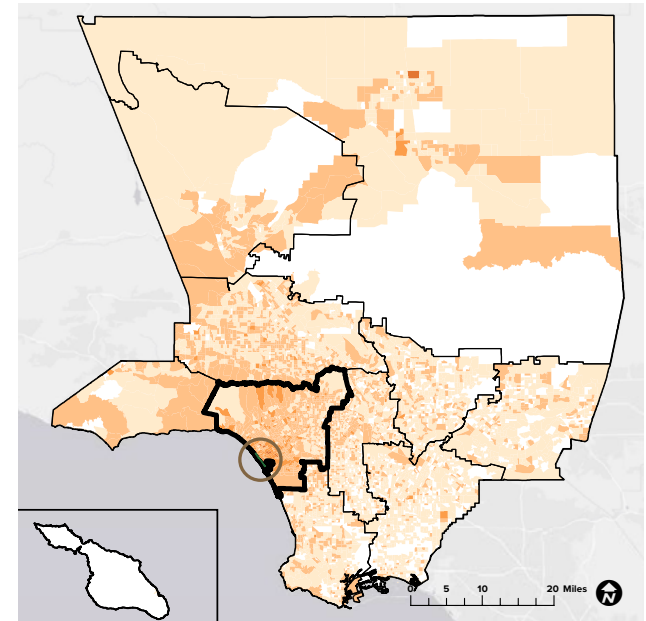
WEBSITE

www.beaches.lacounty.gov/venice-beach/

2019
3,533,121 visitors



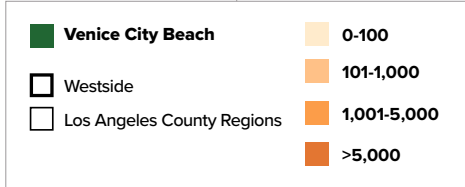
2020
2,316,221 visitors



34%
originated from within LA County

66%
originated from outside LA County

20%
originated from Westside



46%
originated from within LA County

54%
originated from outside LA County

26%
originated from Westside

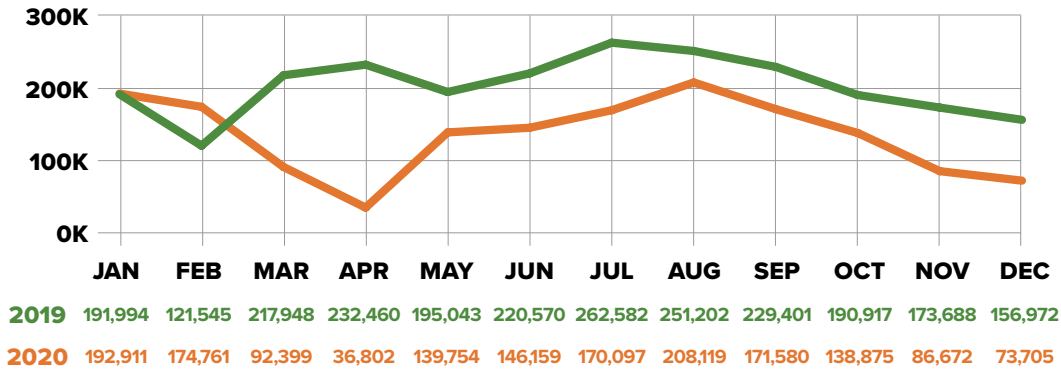
Sources: Unacast 2021 (LA County DPR 2020, LA County PNA 2016, ESRI 2021)

VISITORSHIP REPORT 2019 - 2020

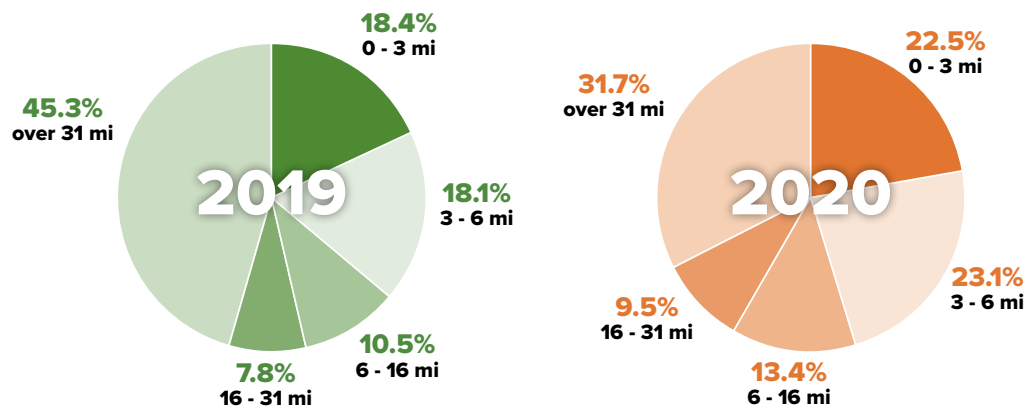
Venice City Beach



MONTHLY VISITORSHIP



TRAVEL DISTANCE



DEMOGRAPHICS

EDUCATION

	High School Diploma	Some College, No Degree	Associates Degree	Bachelors Degree	Masters Degree & Above
2019	13.0%	16.6%	5.9%	24.5%	10.1%
2020	12.9%	17.0%	5.7%	24.3%	9.8%

INCOME

	Less than \$24,999	\$25,000 - \$49,999	\$50,000 - \$74,999	\$75,000 - \$99,999	\$100,000 - \$124,999	More than \$125,000
2019	18.6%	14.8%	18.6%	11.8%	9.1%	26.3%
2020	19.4%	15.5%	18.4%	11.5%	8.8%	26.1%

GENDER IDENTITY

	Male	Female
2019	50.6%	49.1%
2020	50.8%	49.1%

RACE/ETHNICITY

	Amer-Indian	Asian	Black	Hispanic	White	2 or More	Other
2019	0.3%	11.1%	7.0%	25.1%	52.6%	3.0%	0.4%
2020	0.2%	10.8%	7.9%	28.6%	48.9%	2.8%	0.4%

AGE

	18-29	30-39	40-49	50-59	60-69	70-79	80+
2019	23.2%	20.2%	16.7%	15.9%	12.6%	6.9%	4.2%
2020	22.6%	20.5%	17.0%	15.9%	12.5%	7.1%	4.4%

VISITORSHIP REPORT 2019 - 2020

Griffith Park



VITAL STATISTICS



KEY PARK AMENITIES

- Autry Museum of the American West
- Bronson Caves
- Fern Dell / Trails Café
- Greek Theatre
- Carousel
- Griffith Observatory
- Southern Railroad
- Hollywood Sign
- Equestrian Center
- Los Angeles Zoo
- Travel Town Museum
- Golf Course
- Hiking Trails
- Biking Trails
- Children's Play Areas
- Group Picnic Areas
- Swimming Pool
- Group Camping Sites
- Soccer Fields
- Tennis Courts

DESCRIPTION

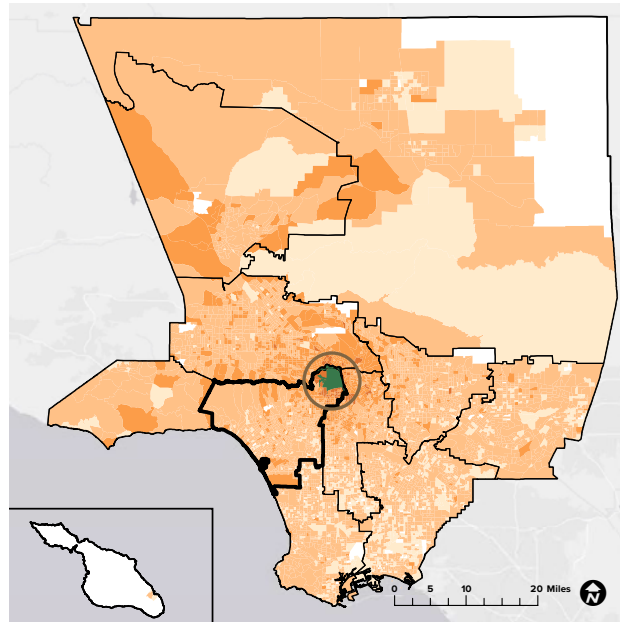
Griffith Park is one of the largest municipal parks with urban wilderness areas in the United States. Situated in the eastern Santa Monica Mountain range, Griffith Park has more than 4,210 acres of natural chaparral-covered terrain and landscaped parkland and picnic areas. Amenities include the Autry National Center, Bronson Caves, Fern Dell/Trails Café, Flora and Fauna, the Greek Theatre, the Merry-Go-Round, the Griffith Observatory, the Southern Railroad, the Hollywood Sign, the L.A. Equestrian Center, L.A. Live Steamers, L.A. Zoo, pony rides, golf ranges and various hiking trails.

WEBSITE

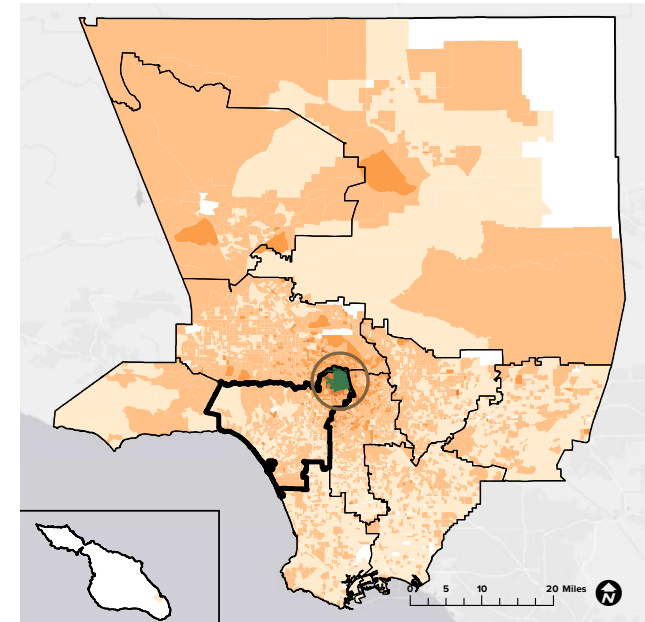
www.laparks.org/park/griffith

ANNUAL VISITORSHIP / VISITOR ORIGIN

2019
9,565,124 visitors



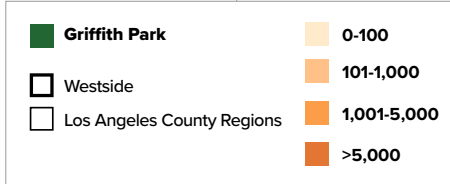
2020
3,800,872 visitors



42%
originated from within LA County

58%
originated from outside LA County

9%
originated from Westside



57%
originated from within LA County

43%
originated from outside LA County

15%
originated from Westside

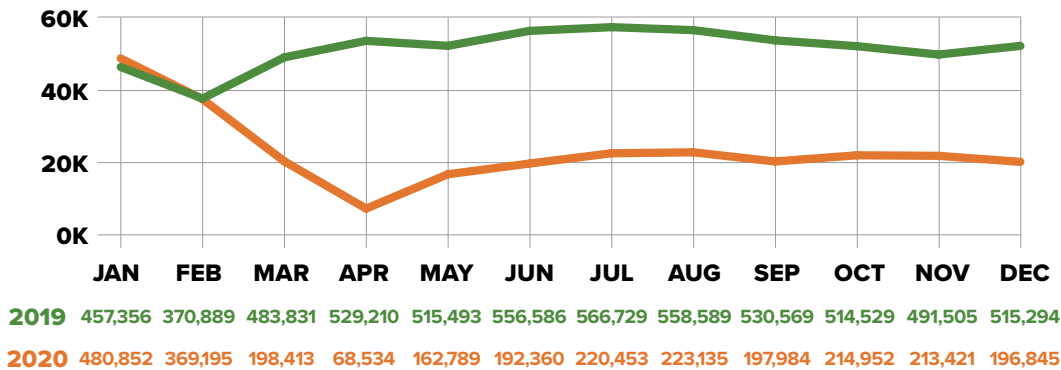
Sources: Unacast 2021 (LA County DPR 2020, LA County PNA 2016, ESRI 2021)

VISITORSHIP REPORT 2019 - 2020

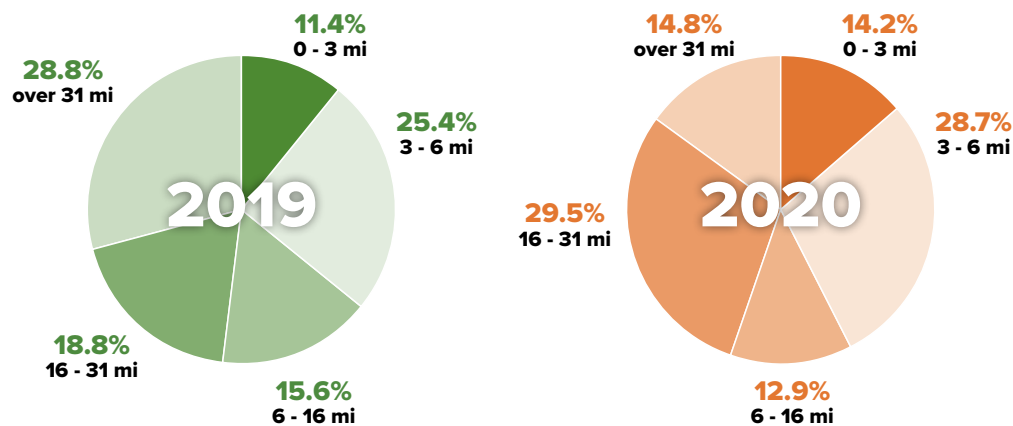
Griffith Park



MONTHLY VISITORSHIP



TRAVEL DISTANCE



DEMOGRAPHICS

EDUCATION

	High School Diploma	Some College, No Degree	Associates Degree	Bachelors Degree	Masters Degree & Above
2019	15.1%	16.6%	6.3%	21.5%	8.1%
2020	11.2%	16.5%	5.6%	27.9%	11.7%

INCOME

	Less than \$24,999	\$25,000 - \$49,999	\$50,000 - \$74,999	\$75,000 - \$99,999	\$100,000 - \$124,999	More than \$125,000
2019	20.0%	16.2%	19.6%	11.7%	9.0%	23.0%
2020	22.2%	17.4%	20.2%	11.1%	8.1%	20.3%

GENDER IDENTITY

	Male	Female
2019	51.2%	48.7%
2020	51.3%	48.7%

RACE/ETHNICITY

	Amer-Indian	Asian	Black	Hispanic	White	2 or More	Other
2019	0.3%	14.7%	5.5%	34.4%	41.9%	2.6%	0.3%
2020	0.2%	16.5%	5.6%	39.1%	35.7%	2.4%	0.3%

AGE

	18-29	30-39	40-49	50-59	60-69	70-79	80+
2019	23.4%	19.1%	17.5%	16.5%	12.4%	6.7%	4.4%
2020	23.5%	19.6%	17.6%	16.2%	12.1%	6.7%	4.4%

VISITORSHIP REPORT 2019 - 2020

Aubrey E. Austin Jr. Park and North Jetty



VITAL STATISTICS

ANNUAL VISITORSHIP / VISITOR ORIGIN



KEY PARK AMENITIES

- Paved Pathway
- Fishing Areas

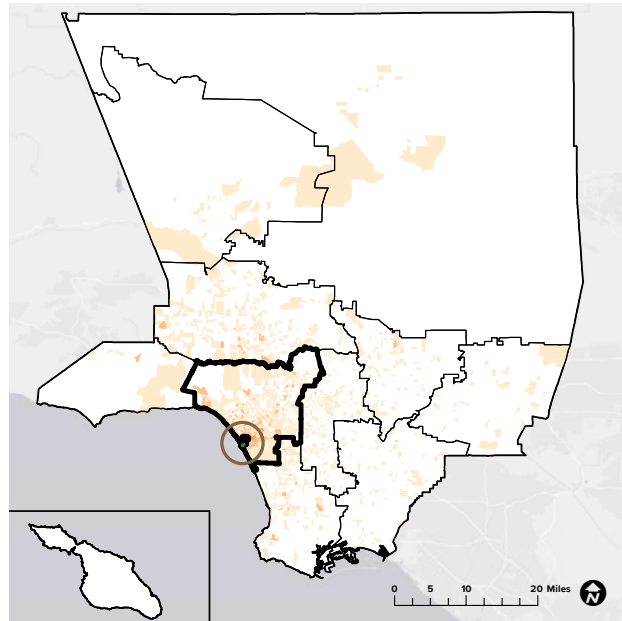
DESCRIPTION

Aubrey E. Austin Jr. Park and North Jetty is located in Marina del Rey, CA. There is a paved walkway that goes out to the ocean at end of the north jetty that is a favorite spot among joggers and fishermen. Beachgoers can walk along the jetty to reach the Marina peninsula. There is also a quiet spot overlooking the Marina lagoon. Both the jetty walkway and the overlook for the Marina lagoon are stroller and wheelchair-accessible.

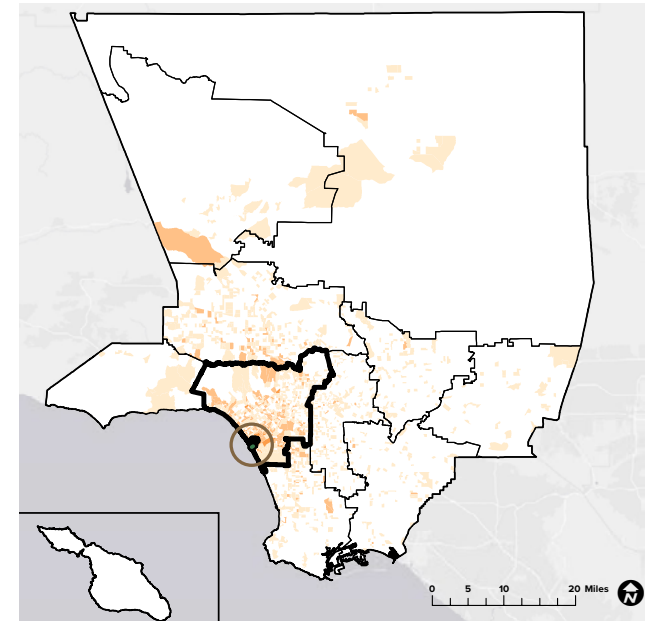
WEBSITE

www.locator.lacounty.gov/lac/Location/3178871/aubrey-e-austin-park

2019
96,243 visitors



2020
142,998 visitors



84%
originated from within LA County

16%
originated from outside LA County

60%
originated from the Westside

Aubrey E. Austin Jr. Park and North Jetty
Westside
Los Angeles County Regions

0-100
101-1,000
1,001-5,000
>5,000

91%
originated from within LA County

9%
originated from outside LA County

61%
originated from the Westside

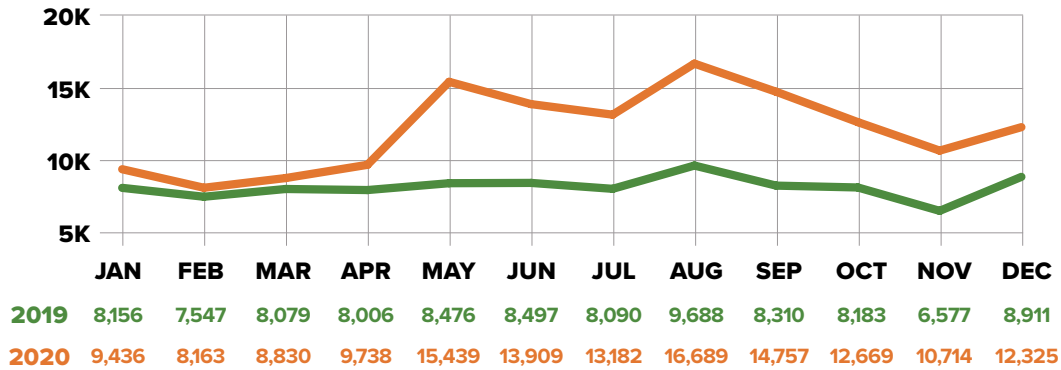
Sources: Unacast 2021 (LA County DPR 2020, LA County PNA 2016, ESRI 2021)

VISITORSHIP REPORT 2019 - 2020

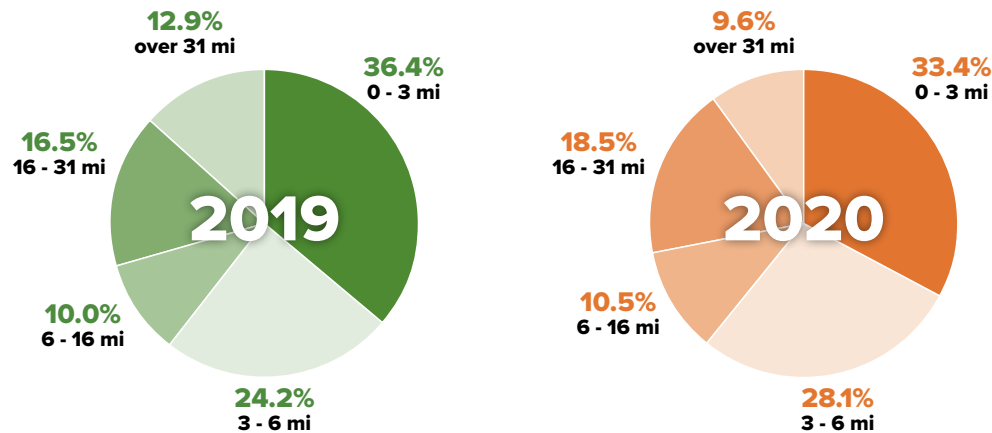
Aubrey E. Austin Jr. Park and North Jetty



MONTHLY VISITORSHIP



TRAVEL DISTANCE



DEMOGRAPHICS

EDUCATION

	High School Diploma	Some College, No Degree	Associates Degree	Bachelors Degree	Masters Degree & Above
2019	12.1%	15.8%	5.5%	27.5%	11.3%
2020	11.2%	16.5%	5.6%	27.9%	11.7%

INCOME

	Less than \$24,999	\$25,000 - \$49,999	\$50,000 - \$74,999	\$75,000 - \$99,999	\$100,000 - \$124,999	More than \$125,000
2019	18.2%	14.7%	17.2%	11.3%	9.5%	28.7%
2020	16.9%	12.9%	16.8%	11.6%	9.4%	32.0%

GENDER IDENTITY

	Male	Female
2019	51.3%	48.5%
2020	51.3%	48.7%

RACE/ETHNICITY

	Amer-Indian	Asian	Black	Hispanic	White	2 or More	Other
2019	0.2%	10.8%	8.0%	25.3%	51.7%	2.8%	0.9%
2020	0.2%	10.7%	8.3%	23.4%	53.4%	3.1%	0.8%

AGE

	18-29	30-39	40-49	50-59	60-69	70-79	80+
2019	20.1%	22.4%	16.0%	15.6%	13.4%	7.5%	4.9%
2020	20.4%	21.7%	15.6%	16.4%	13.2%	7.3%	5.3%

COMMUNITY ENGAGEMENT THEMES

BARRIERS RESIDENTS EXPERIENCE TO USING REGIONAL PARKS AND FACILITIES



LACK OF SHADE

Not enough shade in parks and at facilities, especially near gathering spaces and seating areas.



DISTANCE

Many park amenities are not available nearby.



LACK OF TRANSIT

Public transit to parks is limited, and there are few options for carpooling or shuttles.



LIMITED PARKING

Not enough parking at some parks and facilities.



COST

Fees to enter and/or park at some parks and facilities or rent equipment is too expensive for low income families.



LACK OF INFORMATION

Residents do not know where parks are located, what facilities are available, or how to use and get to amenities.



TOO CROWDED

Not enough facilities to meet demand, so popular parks and trails are often crowded.



SAFETY

Concerns about unhoused people in parks and natural areas, using parks alone, as well as pandemic safety precautions like social distancing in parks and along popular trails.



POLLUTED WATERWAYS

Rivers, lakes, beaches and other waterways are sometimes off limits due to high bacteria levels or sewage spills.



LIMITED ADA ACCESSIBILITY

Facilities are not accessible to disabled and older residents.



LIMITED STAFF

Not enough parks staff to share information and provide security and needed maintenance.



NOT ENOUGH MAINTENANCE AT PARKS AND FACILITIES

Park facilities and trails need repairs, maintenance and restoration.



LACK OF CONNECTIVITY

Not enough trail networks or safe biking and pedestrian options.



LIMITED HOURS

Facilities are not open when people can use them.



LACK OF RECREATION FACILITIES

There are not enough regional park space, swimming facilities and community gathering spaces.



LACK OF OUTDOOR RECREATION AREAS

Including trails, pet-friendly areas, campsites, nature centers and affordable water-based recreation.



LACK OF NEARBY GREENSPACE

Many residents live in park-poor communities and cannot access parks or greenspaces near to where they live.

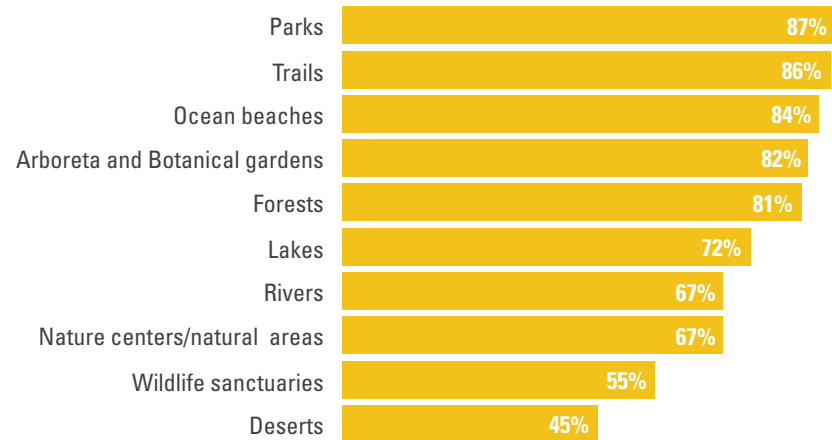
“Seniors need more activities.”

“Will Rogers trails parking closes at sunset, which limits parking revenue, and means people park on the residential streets.”

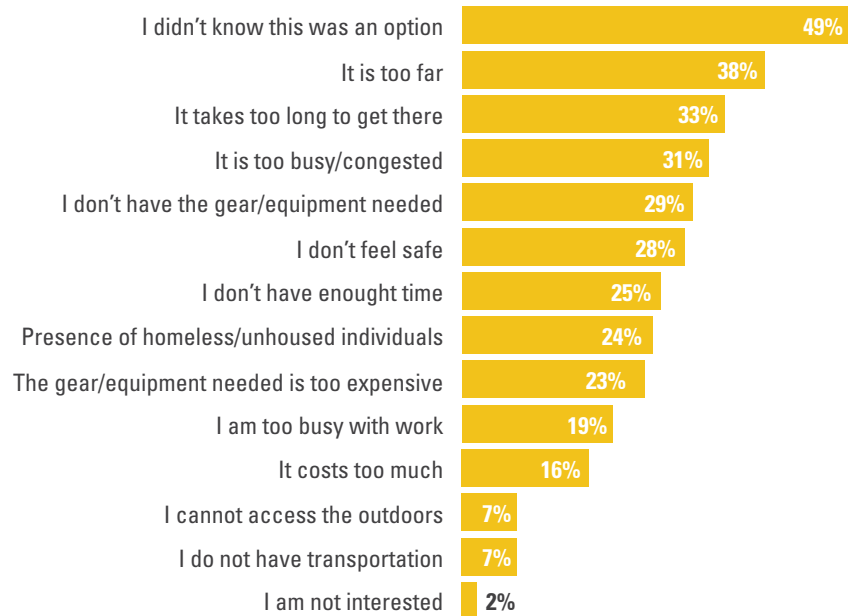
“The bike path along Ballona Creek from Del Rey to Marina del Rey is not very safe for pedestrians to walk on.”

► Residents Regional Parks Use and Activities

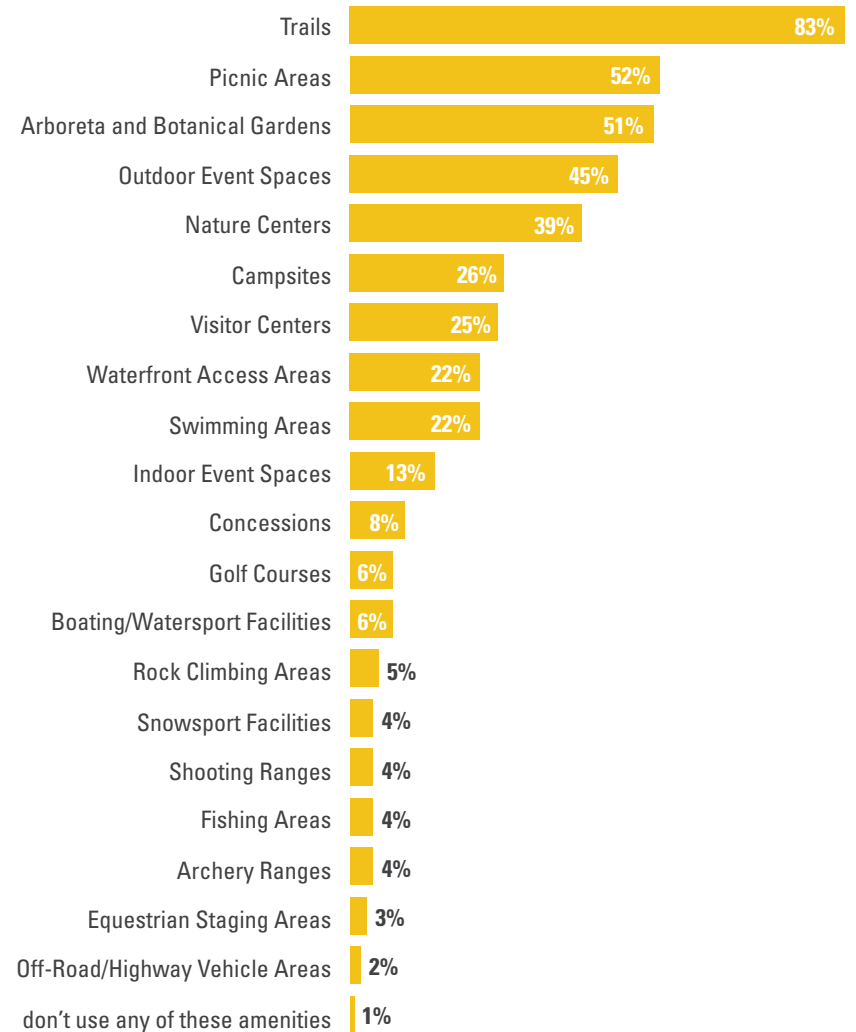
I visit these types of regional parks and facilities the most...



I can't go outside or to parks because...



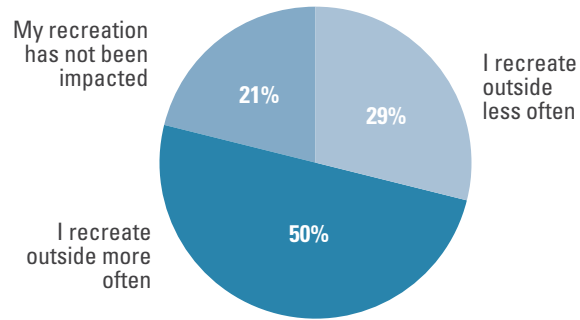
I use these regional park amenities most often:



Appendix A | Westside

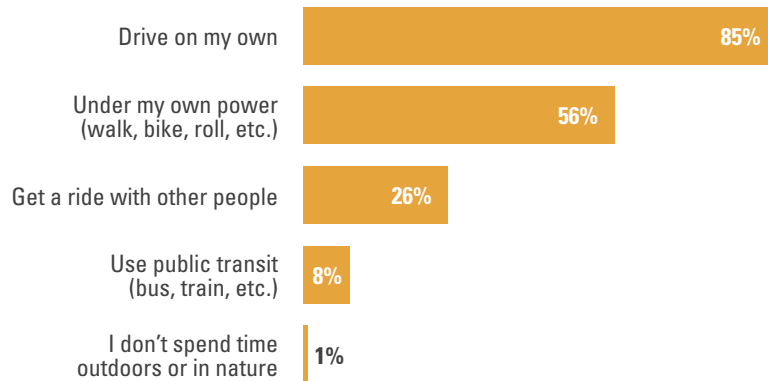
► *Covid-19 Impacts on Recreation for Residents in the Westside Region*

COVID has affected how I recreate...

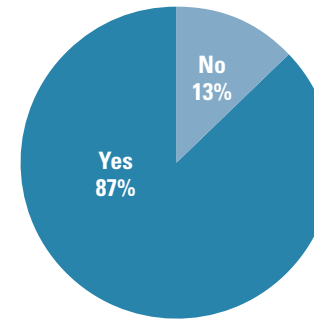


► *Travel to Parks*

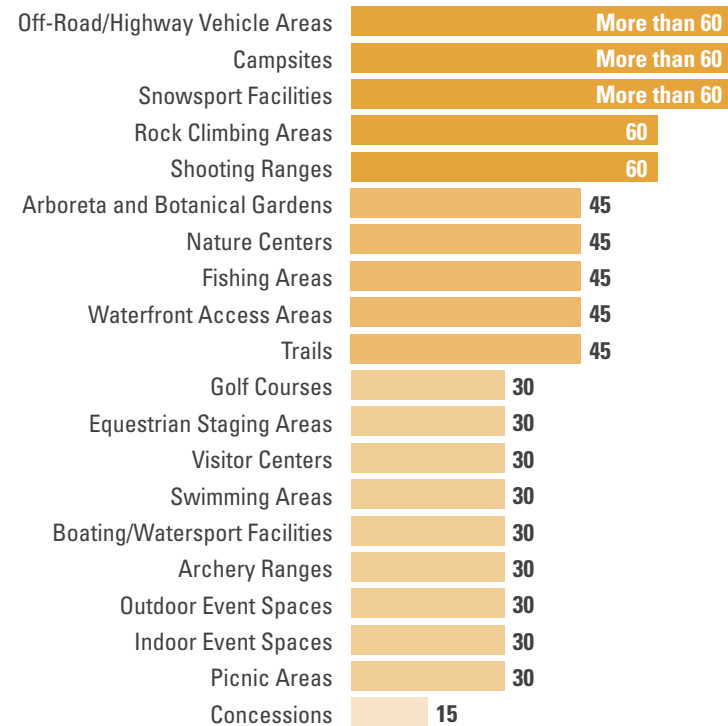
When I travel to parks, these are all the ways I get there...



Because of COVID I am looking for recreation opportunities closer to home...

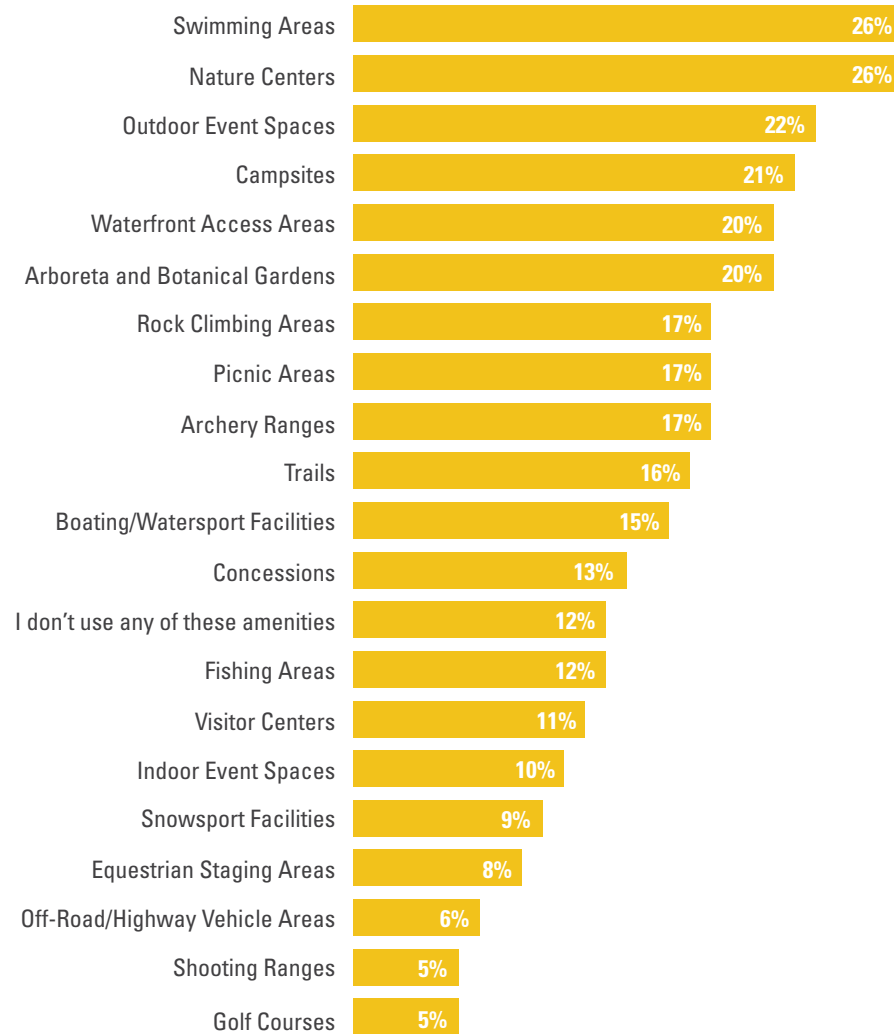


I'm willing to travel this many minutes to parks and amenities...



► *Regional Parks Needs in the Westside Region*

The greatest parks needs in my community include...



► *Quality of Regional Park Amenities in the Westside Region*

These amenities received the highest rate of good, fair or poor quality ratings from respondents...

Good

Golf Courses	71%
Archery Ranges	50%
Off-Road/Highway Vehicle Areas	50%
Trails	47%
Arboreta and Botanical Gardens	41%

Fair

Snowsport Facilities	75%
Concessions	56%
Archery Ranges	50%
Rock Climbing Areas	50%
Off-Road/Highway Vehicle Areas	50%

Poor

Fishing Areas	75%
Boating/Watersport Facilities	57%
Swimming Areas	54%
Shooting Ranges	50%
Campsites	45%

COMMUNITY ENGAGEMENT THEMES

COMMUNITY SUGGESTIONS TO INCREASE AND IMPROVE VISITS TO REGIONAL PARKS AND FACILITIES



MORE SHADE

More shade structures and trees in gathering and playground spaces.



ACCESS TO WATER

Water fountains for users and animals in parks and along trails, more splash pads and water features for cooling off, better access to lakes, and waterways, and restoration of area wetlands.



TRANSIT OPTIONS

Provide free and more frequent transit and shuttles to the beach and to parks.



ADDRESS PARKING AND CONGESTION

Provide incentives for carpooling and review parking options at popular facilities.



ENHANCED SAFETY MEASURES

Provide more patrols on trails and at parks and facilities. Ensure visitors are adhering to social distancing and other protective measures during the pandemic.



ADDRESS HOMELESSNESS

Expand services to support unhoused people who use parks and endanger wildlife habitats.



BETTER ACCESS TO INFORMATION

More information about events at regional parks, available amenities and opportunities to provide input.



IMPROVED SIGNAGE

Provide additional and interactive wayfinding, interpretive and multilingual signage in parks and along trails.



ADA ACCESSIBILITY

Provide wheelchair and disabled accessible trails and facilities, including restrooms.



EXPAND NATIVE AMERICAN ACCESS AND FACILITIES

Provide access to ceremonial spaces for gatherings and events and provide spaces for indigenous-led education centers and activities.



EXPAND COMMUNITY EVENTS

Open up park spaces for the community to hold more events.



IMPROVED MAINTENANCE AND INFRASTRUCTURE

Clean and maintain restrooms, trails and campsites, provide more picnic tables and seating.



ADDITIONAL STAFF

Hire staff that is more representative of the population to guide visitors and maintain trails and parks.



BETTER ACCESS TO PROGRAMS

Improve and standardize the online reservation system, gather community input to improve the variety of recreation classes, and provide affordable equipment and classes for all ages, especially youth and seniors.



MORE RECREATION FACILITIES

Extend facilities hours, provide more restrooms, bike parking, outdoor equipment and gathering spaces, and build additional parks, courts, sports fields, and walking/jogging trails.



EXPAND CONCESSIONS

Provide more concessions with healthy food options at parks and facilities.



DEDICATED USE TRAILS

Provide more and separate trails for hiking, biking, equestrian use to help mitigate conflict and increase safety for all users along trails.



ENHANCE CONNECTIVITY

Provide greenways and trail networks that connect communities, parks and provide safe transportation corridors for bicyclists, equestrians and pedestrians.



EXPAND AND PRESERVE GREENSPACE

More trees, pocket parks, native habitat areas, nature centers, learning gardens, and natural open spaces with native and regenerative landscaping for passive recreation and viewing wildlife.



PARTNERSHIPS WITH COMMUNITY ORGANIZATIONS

Expand park use and greenspace access through school and community partnerships.

“Some bike trails flooded with walkers. Maybe two trails needed in some areas.”

“The LA River park could be a major improvement for the west LA area!!!”

“The wooden walkways over the Santa Monica beaches are a great asset and increase access for all. Let’s have more.”

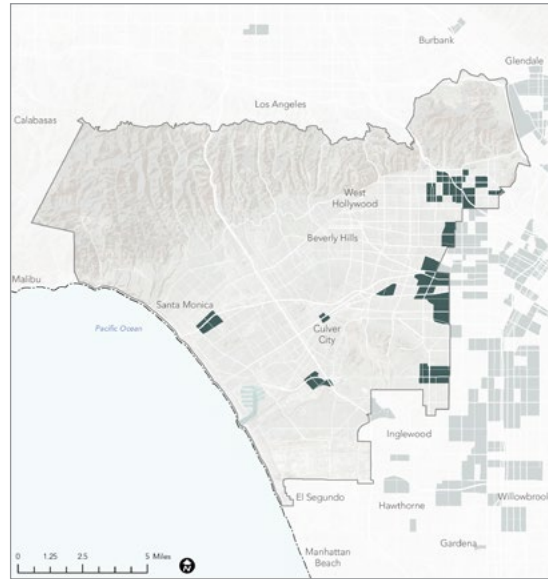
“We need a large regional park on the westside. Space is an issue and will be more difficult in the future. We need to set aside space now.”

“Ballona Wetlands Ecological Reserve ... is an important and special area for migrating and resident birds. There are no longer many open areas near the water. The human camping and trashing this area is a tragic abuse of this place. It is heartbreaking to see the loss and abuse of this open ecological place... The homeless encampments are sad for everyone: the homeless people, for the non-homeless people, and for the birds, other animals, and plants with who we need to share the limited spaces. ”

“To help address the lack of regional park space are are fortunate that the Santa Monica Airport will be closing in 2028 and that Santa Monica residents have voted to earmark that land for park use. How can LA County help?”

REGIONAL RECREATION PRIORITY ANALYSIS

Areas Experiencing the Highest Levels of Barriers and Vulnerability



- Legend**
- Areas of Moderate to High Vulnerability Across All Four Dimensions
 - Westside Regional Study Area
 - Los Angeles County
 - Major Roads



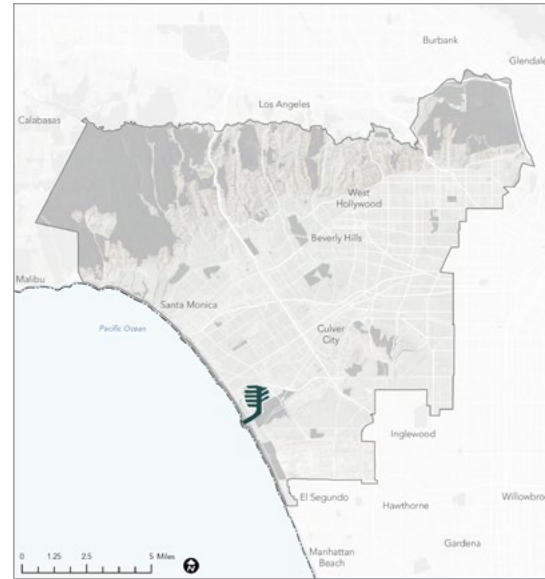
High Levels of Social and Transportation Barriers



High Levels of Health and Environmental Vulnerability

Map source: HPI, 2021; 2021 RRE Inventory

Areas Located in Low Proximity to Regional Recreation Sites



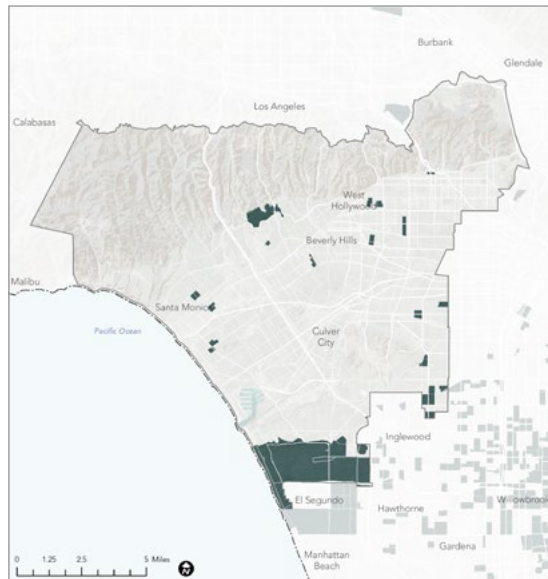
- Legend**
- Areas in Low Proximity to Regional Recreation Facilities (beyond a 2.5-mile bicycle ride to any Regional Recreation Park Entry Points, Nature-Based Recreation Area Entry Points or Trailheads and Access Points)
 - Regional Site Inventory
 - Westside Regional Study Area
 - Los Angeles County
 - Major Roads



Low Proximity to Regional Recreation Sites

Map source: ArcGIS StreetMap Premium, 2021; 2021 RRE Inventory

Areas With Low Visitorship Rates to Regional Recreation Sites



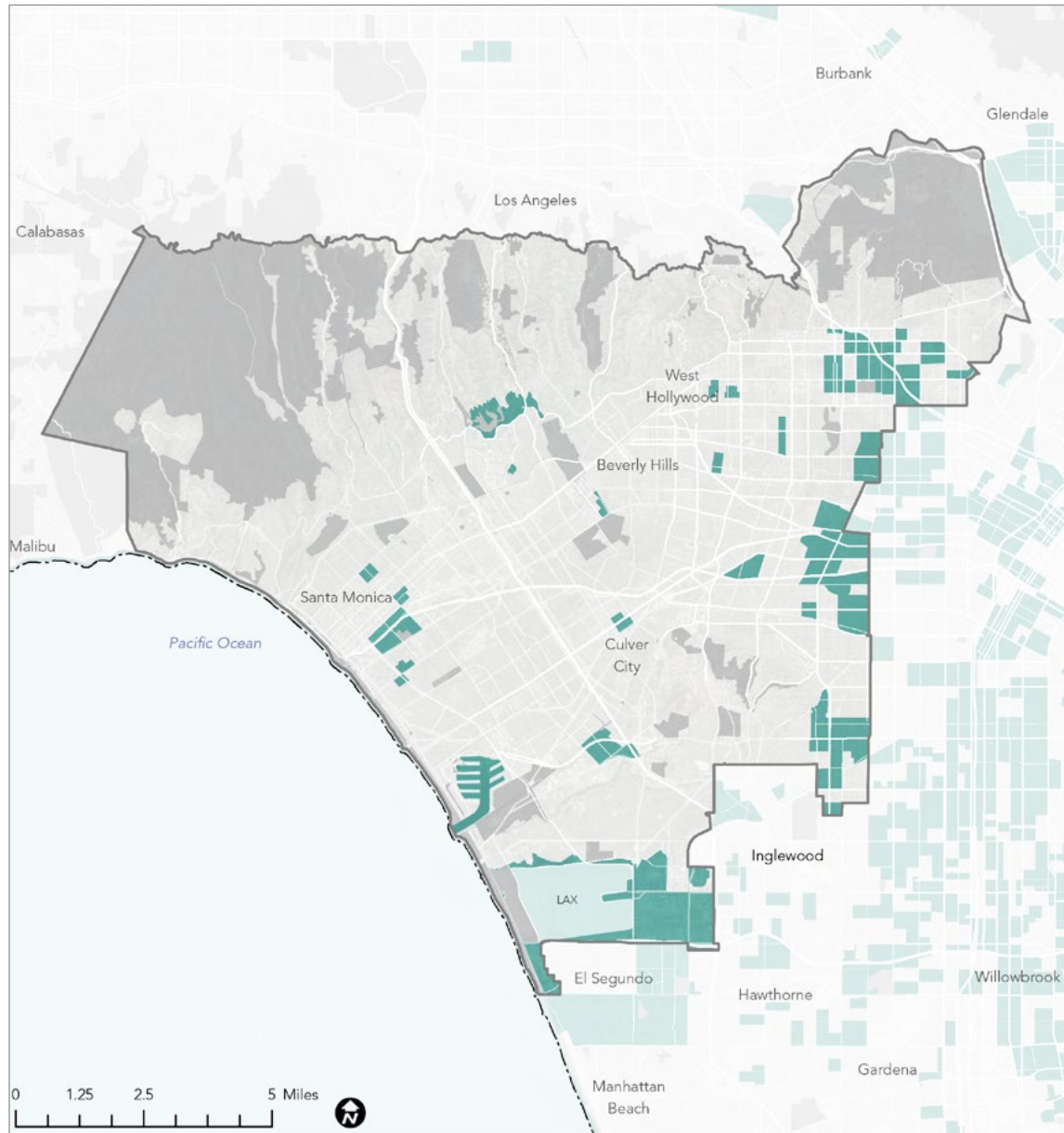
- Legend**
- Areas with Low Visitorship Rates (less than one observed visit per resident over the two-year period)
 - Westside Regional Study Area
 - Los Angeles County
 - Major Roads



Low Visitorship Rates to Regional Recreation Sites

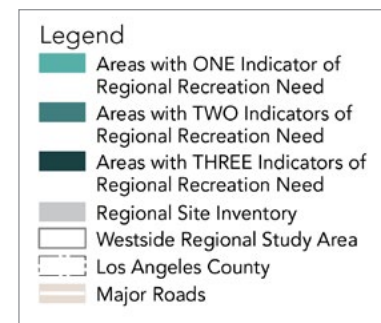
Map source: Unacast, 2021; 2021 RRE Inventory

REGIONAL RECREATION PRIORITY AREAS



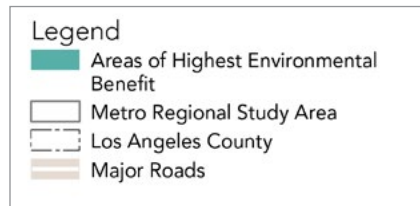
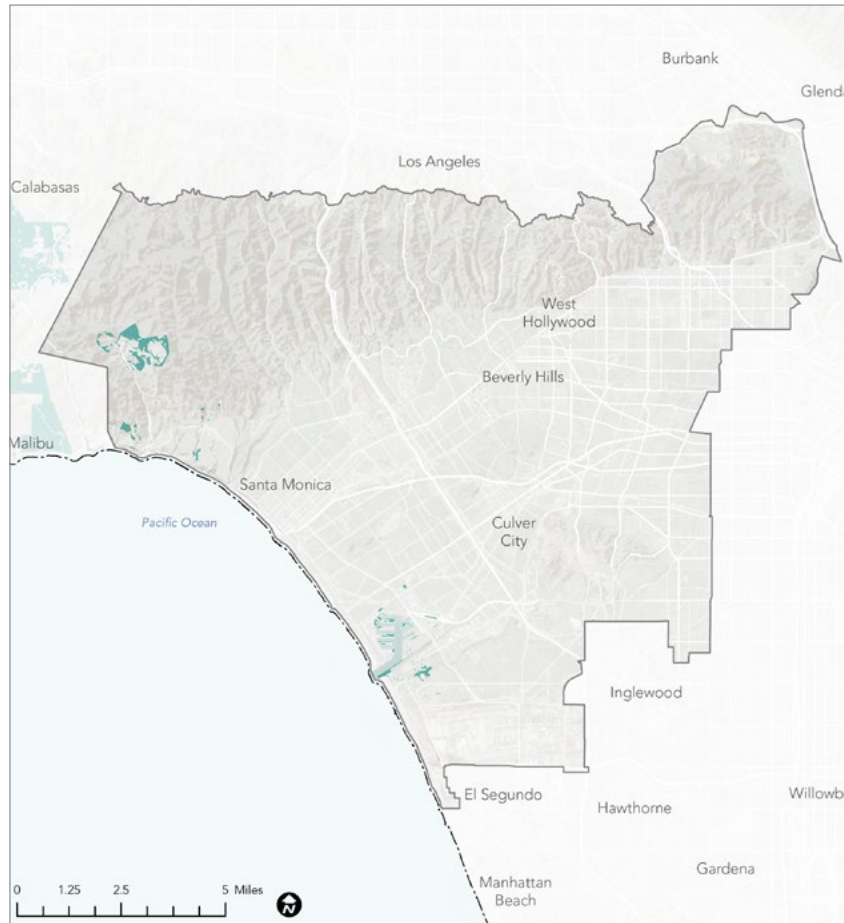
Map source: HPI, 2021; Unacast, 2021; ArcGIS StreetMap Premium, 2021; 2021 RRE Inventory

Areas with:

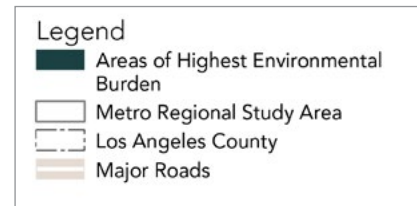
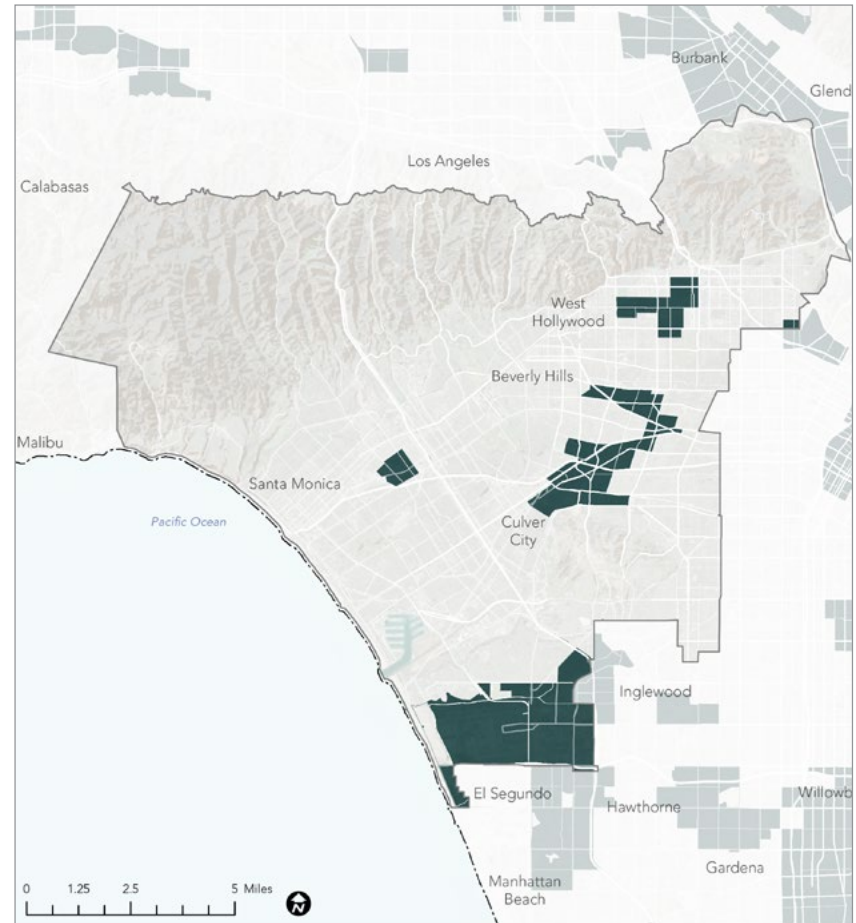


ENVIRONMENTAL CONSERVATION AND RESTORATION PRIORITY AREAS

Priority Areas for Conservation



Priority Areas for Restoration



Maps source: CDFW ACE, 2021; USGS, 2021; COEHHA, 2021; CalFire FRAP 2015