

we all need



PNA+

APPENDIX A

REGIONAL STUDY

AREA PROFILES

This project was previously called the Regional and Rural Edition (RRE) to emphasize its focus on regional and rural recreation needs and priorities. This project name was used during the data collection, and community engagement and outreach phases which occurred primarily in 2021. As this report was being completed in 2022, DPR decided to rename the project the Parks Needs Assessment Plus (PNA+) to clarify and better communicate that this project complements and offers new information not previously included in the 2016 Parks Needs Assessment (PNA), such as mapping and analyses related to population vulnerability, environmental benefits, environmental burdens, and priority areas for environmental conservation, environmental restoration, regional recreation, and rural recreation. (Please note that there remains some text and graphic references to the RRE in this document because that was the project name when some components of this study were completed.)

WEST SAN GABRIEL VALLEY REGIONAL STUDY AREA PROFILE

STUDY AREA ID #7

- » Study Area Description
- » Study Area Demographics
- » Population Vulnerability
- » Regional Site Inventory
- » Environmental Benefits
- » Environmental Burdens
- » Regional Recreation Parks
- » Regional Recreation Park Access
- » Nature-Based Recreation Areas
- » Nature-Based Recreation Area Access
- » Nature-Based Recreation Amenities
- » Regional Trails
- » Regional Trail Access
- » Regional Site Visitorship
- » Community Engagement Themes
- » Regional Recreation Priorities
- » Environmental Conservation and Restoration Priorities

Note

This profile is not intended to stand alone. For definitions of key terms and a full description of the analysis summarized within please refer to Chapters 3 and 4 of the main report as well as Appendix C: Technical Resources.



STUDY AREA DESCRIPTION

LOCATION

The Angeles National Forest is the northern border of the West San Gabriel Valley Study Area, while downtown Los Angeles and the Gateway Study Area make up the southern border. The eastern border of the study area is roughly Interstate-605. The study area includes the cities of Alhambra, Arcadia, Bradbury, Duarte, El Monte, Irwindale, La Cañada Flintridge, Monrovia, Monterey Park, Montebello, Pasadena, Rosemead, San Gabriel, San Marino, South Pasadena, Sierra Madre, South El Monte, and Temple City. Unincorporated areas located within the study area include Altadena, Chapman Woods, East San Gabriel, East Pasadena, Kinneloa Mesa, San Pasqual, South San Gabriel, Whittier Narrows and South Monrovia.

GEOGRAPHY

The study area includes the San Gabriel Mountains and Angeles National Forest. The San Gabriel River flows north-south along the study area's eastern border and Interstate-605. The study area is almost entirely developed with suburban developments.

STUDY AREA ISSUES

The study area is comprised of mature, suburban communities, including some in the foothills of the San Gabriel Mountains. Some of these communities contain environmental resources, including Significant Ecological Areas (SEAs), and others face hazardous constraints. Portions of the Altadena Foothills and Arroyos SEA, San Gabriel Canyon SEA, and Puente Hills SEA are within the study area. In addition, many of the foothill communities are designated Very High Fire Hazard Severity Zones, which reflects the increased threat of wildfires and subsequent mudslides within those areas.

Many of the unincorporated areas are isolated islands of almost entirely residential development. It is important to integrate these islands into the fabric of their surrounding communities, where many of the services and daily needs of the unincorporated residents are met.

PARK AND RECREATION RELATED ISSUES

- » Several areas located in the West San Gabriel Valley region were identified as having Very High Park Need in the 2016 Countywide Parks Needs Assessment. These study areas include the City of El Monte and Unincorporated East San Gabriel/ Unincorporated Arcadia.
- » The lack of access to a personal vehicle and inadequate public transit service have left many residents in the West San Gabriel Valley unable to reach nearby public lands in the Angeles National Forest.
- » The study area has a limited number of trails. The San Gabriel Valley Greenway Network has the potential to transform channels, washes, and rivers into an interconnected network of bike paths, trails, and greenspaces in a highly developed area. The plan to implement the network is expected to be finalized by the end of 2022 with a list of priority projects.

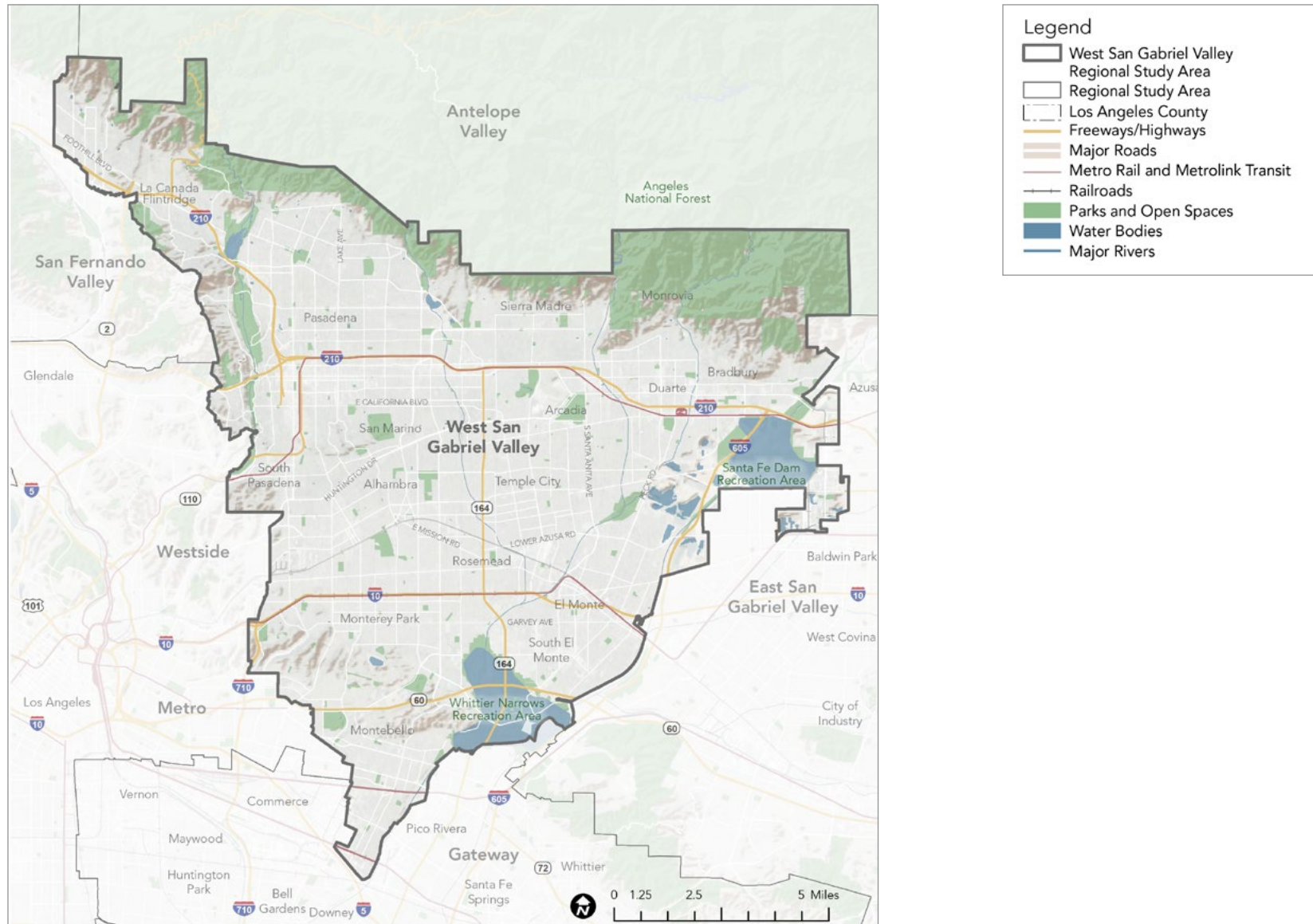
ANALYSIS FINDINGS

- » The area experiences a relatively high concentration of vulnerable populations, including parts of Alhambra, El Monte, and South El Monte.
- » The regional recreation facilities and trails in the area are relatively well served by public transportation due to an extensive transit network in the San Gabriel Valley. However, access to the Angeles National Forest remains difficult for those without access to a personal vehicle.
- » The area experiences the highest rates of visitorship to the Angeles National Forest, Santa Fe Dam Recreational Area, and Whittier Narrows Recreation Area.
- » High Regional Recreation Need is found in pockets across the study area, such as Duarte, El Monte, and Whittier, due to its disparate vulnerable populations and low visitorship rates.
- » A number of areas adjacent to the Angeles National Forest have been identified as a priority areas for conservation.
- » Several areas, including portions of El Monte, Irwindale, and South El Monte, have been identified as priority areas for restoration due to their relatively poor environmental health.
- » This study area only has 0.16 miles of regional trails per 1,000 residents, which is well below the countywide average of 0.33.

COMMUNITY ENGAGEMENT THEMES

- » Heat, distance, lack of transit and limited information about parks and facilities, cost, safety and not feeling welcome are identified as barriers to park use for residents in the study area.
- » Residents say they need more shade, swimming facilities, affordable transit, accessible facilities, trails and trail networks, more multilingual signage and information, gathering spaces, and affordable and open access to park programs and facilities.
- » 41% of survey respondents say they are recreating outside more and 85% are looking to do that closer to home because of COVID.

WEST SAN GABRIEL VALLEY REGIONAL STUDY AREA

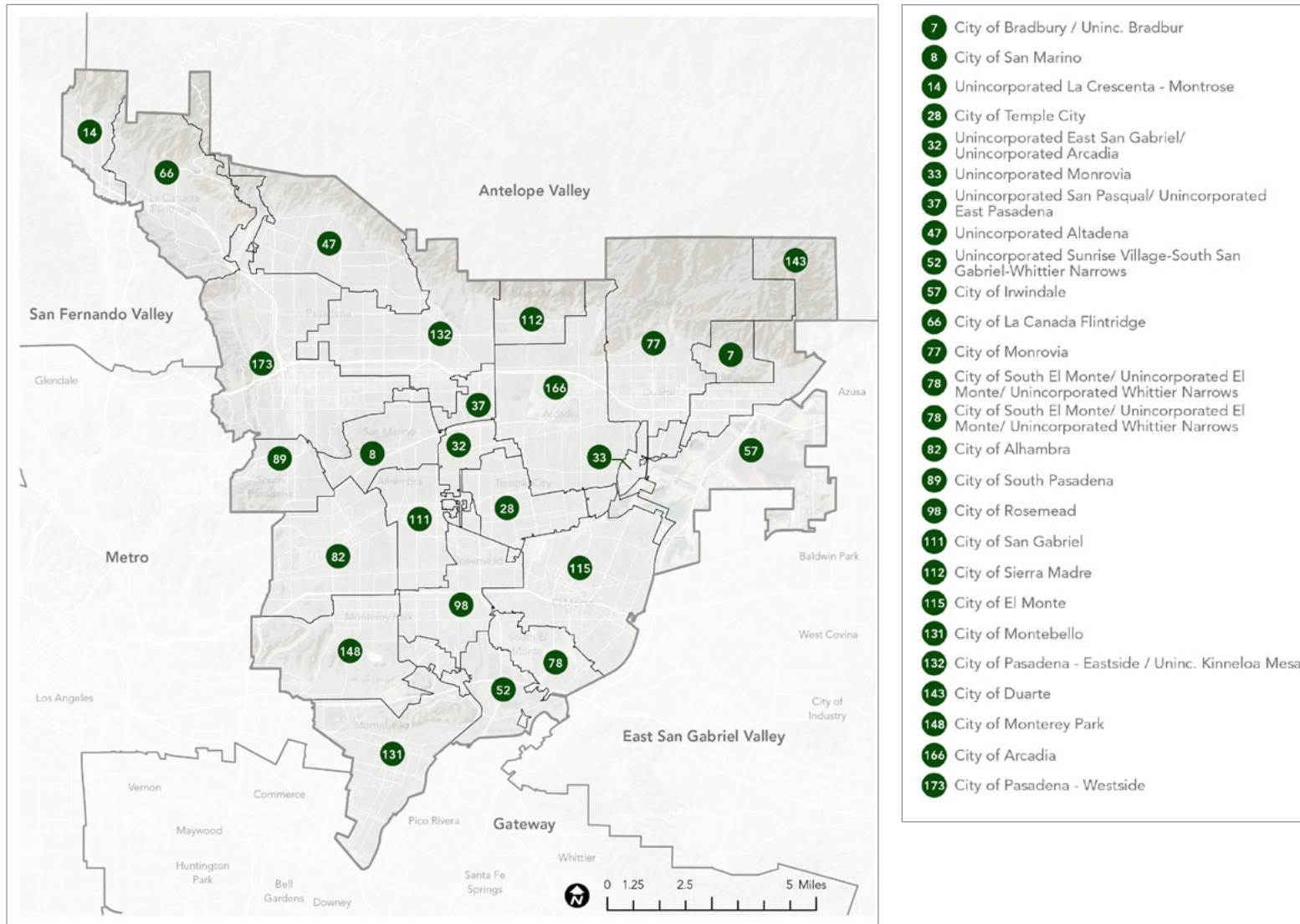


Map source: US Census, 2019; Esri, 2021; MIG, 2021; LAC GIS, 2021; USGS NHD, 2021

Note: All Regional Study Profile maps in this chapter include and refer to the sources listed here as basemap layers.

PNA STUDY AREAS LOCATED WITHIN REGIONAL STUDY AREA

This map shows the relationship of Regional Study Area to the boundaries of the study areas that were analyzed in the 2016 PNA.



Map source: PNA, 2016

STUDY AREA DEMOGRAPHICS

Population, Race, Ethnicity, Gender, Income, Age, and Education Level

Population	
Total	915,196

Race	Percentage
White	46.0%
Black or African American	3.7%
American Indian and Alaska Native	0.34%
Asian	33.9%
Native Hawaiian and Other Pacific Islander	0.14%
Some Other Race	12.7%
Two or More Races	3.0%
Total	100%

Ethnicity	Percentage
Hispanic or Latino	38.4%
Not Hispanic or Latino	61.6%
Total	100%

Income	Percentage
Less than \$25,000	21.1%
\$25,000-\$49,999	21.8%
\$50,000-\$74,999	16.5%
\$75,000-\$99,999	11.7%
\$100,000-\$150,000	14.6%
\$150,000+	14.4%
Total	100%

Gender	Percentage
Male	48.5%
Female	51.5%
Total	100%

Age	Percentage
Under 5 years	5.7%
5 to 9 years	5.4%
10 to 14 years	5.9%
15 to 19 years	6.2%
20 to 29 years	13.7%
30 to 39 years	13.5%
40 to 49 years	14.6%
50 to 59 years	14.3%
60 to 69 years	10.0%
70 to 79 years	6.0%
80+ years	4.6%
Total	100%

Education Level	Percentage
Less than 9th Grade	13.1%
9th-12th grade	8.4%
HS Grad	20.6%
Some college, no degree	16.7%
Associates	7.1%
Bachelors	21.1%
Graduate or professional degree	13.0%
Total	100%

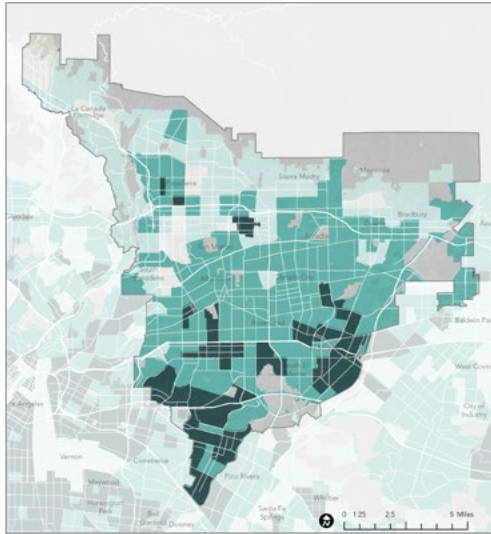
Source: Planning Area Framework, The Los Angeles County General Plan 2035.

2014 ACS 5-Year Estimate Subject t=Tables (<https://data.census.gov/cedsci/table?q=United%20States&g=0500000US06037%241400000&d=ACS%205-Year%20Estimates%20Subject%20Tables>)

Note: At the time that this report was prepared, 2020 Census results were not available.

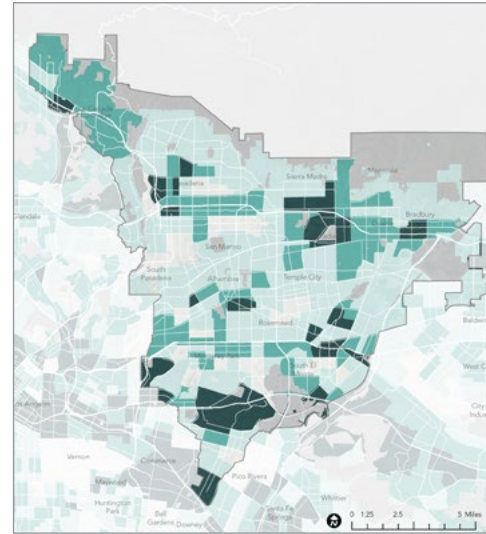
POPULATION VULNERABILITY DIMENSIONS

Social Barriers Dimension



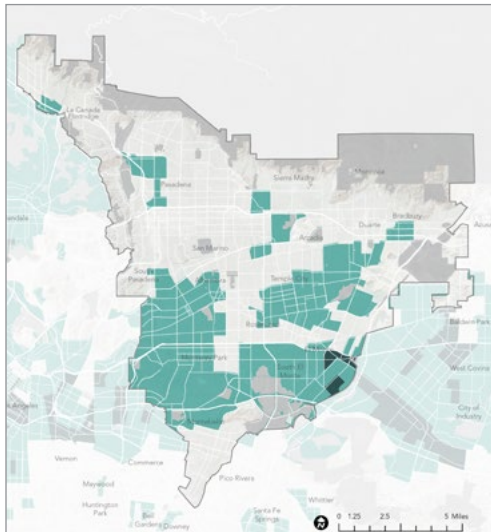
- Indicators:
- » High Poverty Rate
 - » High Unemployment Rate
 - » Majority-Minority Population
 - » High % of Young Children
 - » High % of Elderly Residents
 - » High % of Non-English-Speaking Residents
 - » Low % of Two-Parent Households

Transportation Barriers Dimension



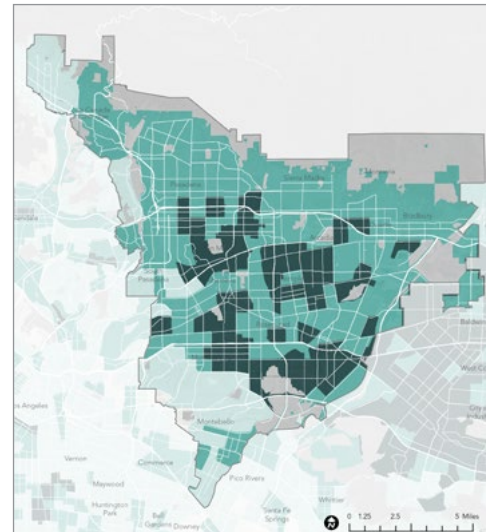
- Indicators:
- » Low Automobile Access
 - » Low Public Transit Access
 - » Low Active Commuting Rate
 - » High Traffic Density
 - » High Pedestrian Injuries

Health Vulnerability Dimension



- Indicators:
- » Low Park Access
 - » Low Tree Canopy
 - » High % Impervious Surface
 - » High Number of Excessive Heat Days
 - » High Urban Heat Island Index Score

Environmental Vulnerability Dimension



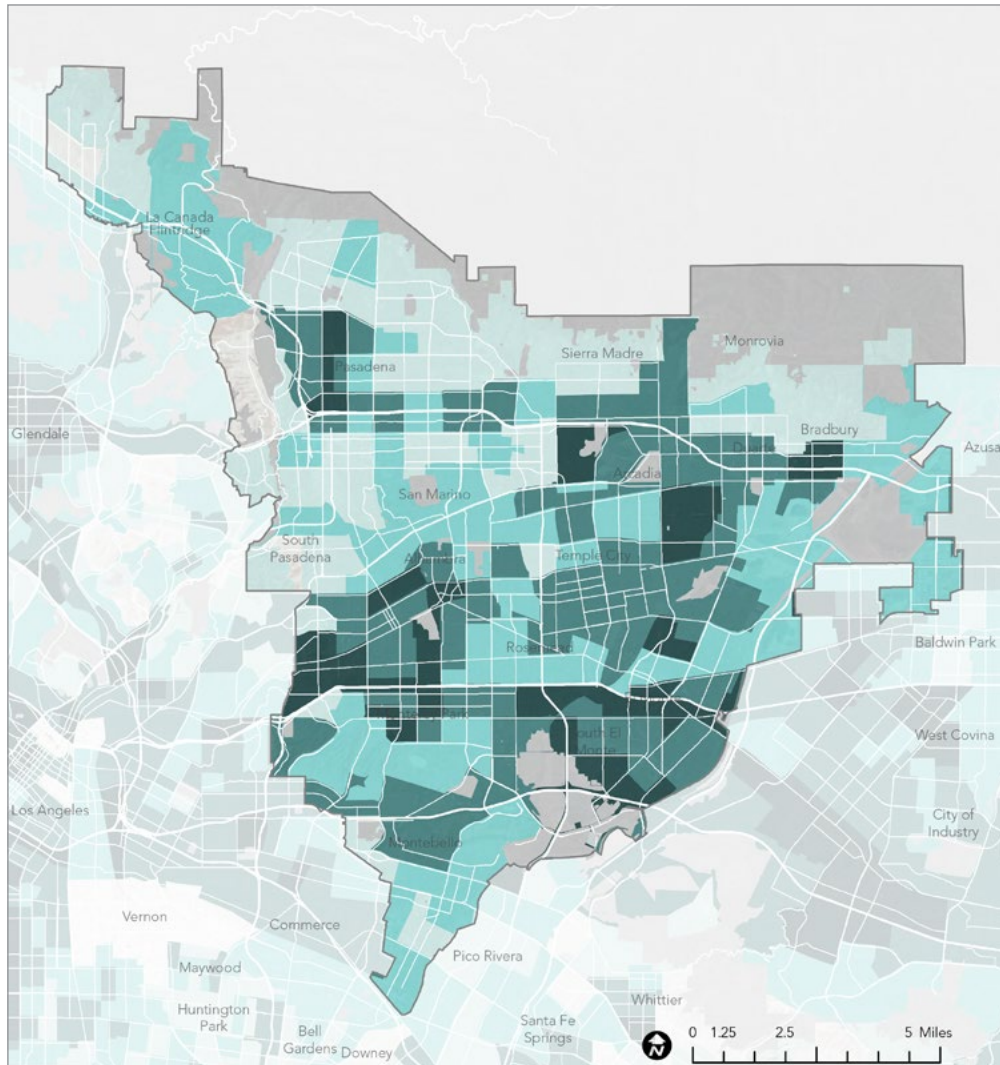
- Indicators:
- » Reduced Life Expectancy at Birth
 - » High Pollution Levels

Legend

- Low
- Moderate
- High
- Regional Site Inventory
- West San Gabriel Valley Study Area
- Los Angeles County
- Major Roads

Maps source: HPI, 2021; 2021 RRE Inventory

COMPOSITE POPULATION VULNERABILITY



Legend

- Moderate to High Vulnerability for ONE Dimension
- Moderate to High Vulnerability for TWO Dimensions
- Moderate to High Vulnerability for THREE Dimensions
- Moderate to High Vulnerability for FOUR Dimensions
- Regional Site Inventory
- West San Gabriel Valley Study Area
- Los Angeles County
- Major Roads

Map source: HPI, 2021; 2021 RRE Inventory

Dimensions of Population Vulnerability

Social Barriers Dimension:

Prevalence of:

- » Young Children
- » Elderly
- » Non-English Speaking Residents
- » Single Parent Households
- » Poverty
- » Unemployment
- » Majority-Minority Population

Transportation Barriers Dimension:

- » Limited Active Commuting
- » Limited Automobile Access
- » Limited Public Transit Access
- » High Traffic Density
- » High Pedestrian Injuries

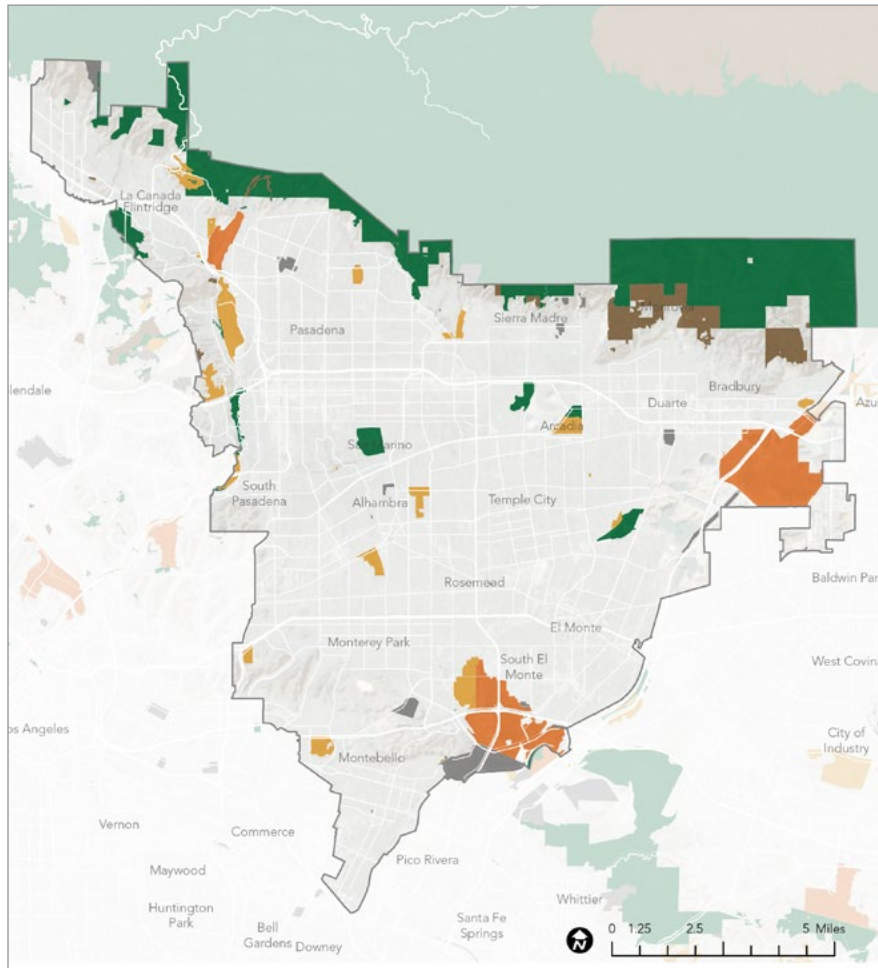
Health Vulnerability Dimension:

- » Reduced Life Expectancy at Birth
- » High Pollution Levels

Environmental Vulnerability Dimension:

- » Limited Park Access
- » Limited Tree Canopy
- » High % of Impervious Surface
- » High Excessive Heat Days
- » High Urban Heat Island Index Score

REGIONAL FACILITY METRICS

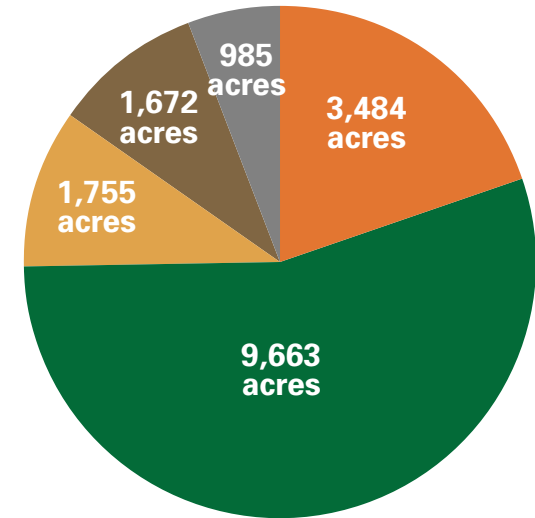


Map source: 2021 RRE Inventory

17,558
TOTAL ACRES
OF REGIONAL
FACILITIES

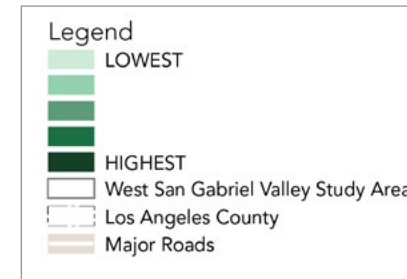
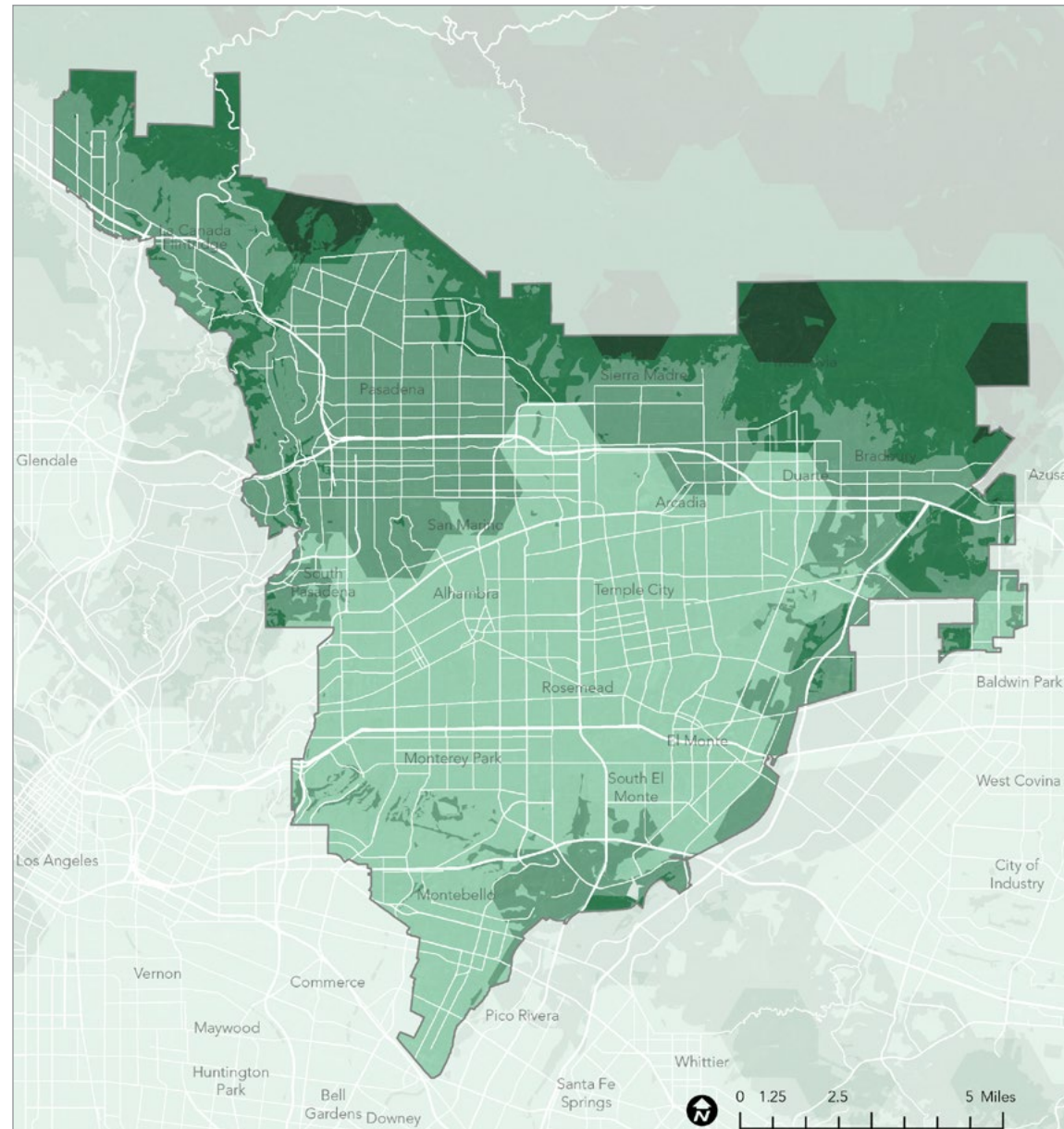
17%
OF THE TOTAL
LAND AREA
IS REGIONAL
FACILITY LAND

19
ACRES OF
REGIONAL
FACILITY LAND
PER 1,000
RESIDENTS



- REGIONAL RECREATION PARKS
- NATURE-BASED RECREATION AREAS
- REGIONAL SPECIALIZED RECREATION AREAS
- CONSERVATION AREAS
- OTHER PUBLIC AND SEMI-PUBLIC OPEN SPACE

ENVIRONMENTAL BENEFITS



INDICATORS

Species Diversity. Species diversity data represent a count of the number of different species for amphibians, aquatic macroinvertebrates, birds, fish, mammals, plants, and reptiles.

Significant Habitat. Significant habitat values represent terrestrial habitats or vegetation types that are the focus of state, national, or locally legislated conservation laws, as well as key habitat areas that are essential to the survival and reproduction of focal wildlife species.

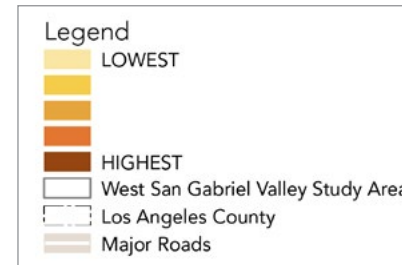
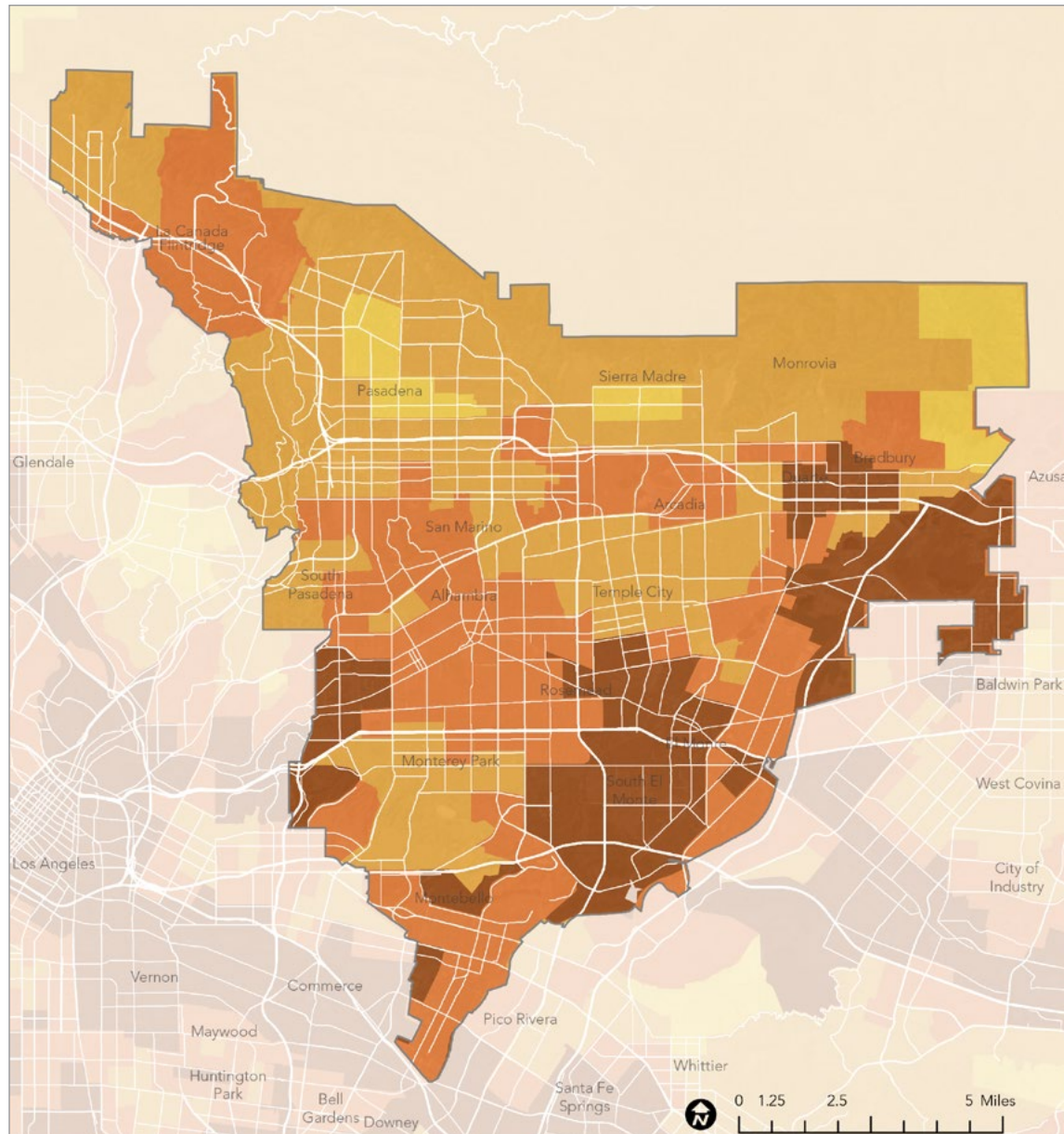
Habitat Connectivity. Habitat connectivity values summarize information on the presence of mapped terrestrial corridors or linkages and juxtaposition to large, contiguous, natural areas.

Proximity to Waterbody. Proximity to waterbody represents the distance to a water drainage network of the US. Proximity was categorized as less than 0.1 mile (highest benefit), 0.1 to 0.25 mile, 0.25 to 0.5 mile, 0.5 -1.0 mile, or greater than 1.0 mile (lowest benefit).

Habitat Type. Habitat types are divided into natural vegetation (high score), agriculture/barren/other (low score), and urban (lowest score).

Map source: CDFW ACE, 2021; USGS, 2021; COEHHA, 2021; CalFire FRAP 2015

ENVIRONMENTAL BURDENS



INDICATORS

Groundwater Threat. Groundwater threats come from many sources, including storage and disposal of hazardous materials on land and in underground storage tanks, dairy farms, concentrated animal-feeding operations, and water ponds generated for oil and gas development also pose threats to groundwater reserves.

Hazardous Waste. Hazardous waste facilities and generators pose widespread concerns for both human health and the environment from sites that serve to process or dispose of hazardous waste.

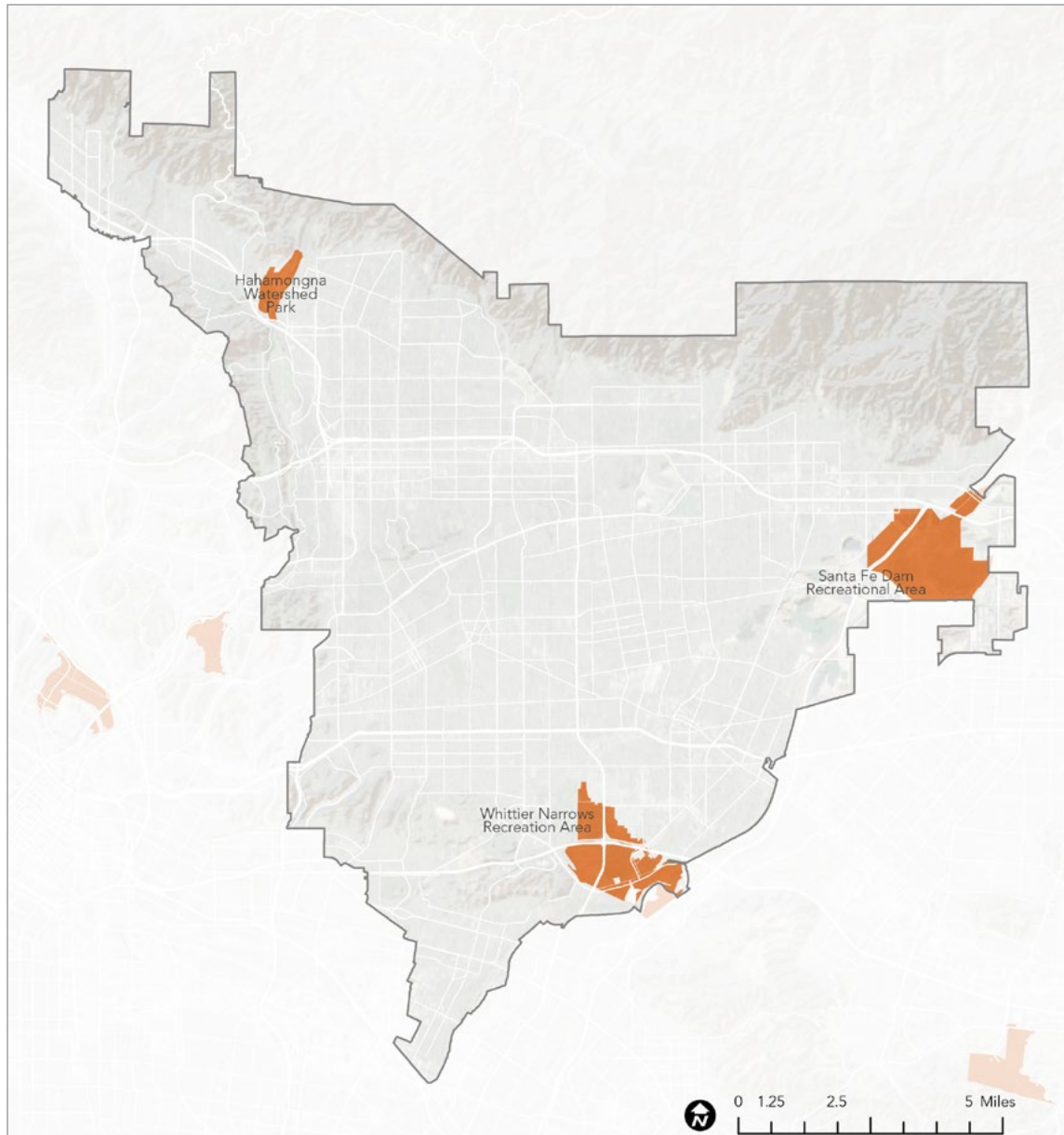
Drinking Water. Drinking water contaminants are introduced into drinking water sources in many ways, including natural occurrence, accidental discharge, industrial release, agricultural runoff and certain water disinfection methods.

PM2.5. Fine particulate matter (PM) that measures 2.5 microns or less in width represents a major contributor to air pollution and has been shown to cause significant adverse health effects, including heart and lung disease.

Pollution Burden. Pollution burden is composite indicator derived from seven exposure indicators (ozone and PM2.5 concentrations, diesel PM emissions, drinking water contaminants, children’s lead risk from housing, pesticide use, toxic releases from facilities, and traffic density) and five environmental effects indicators (cleanup sites, impaired water bodies, groundwater threats, hazardous waste facilities and generators, and solid waste sites and facilities).

Map source: CDFW ACE, 2021; USGS, 2021; COEHHA, 2021; CalFire FRAP 2015

REGIONAL RECREATION PARKS

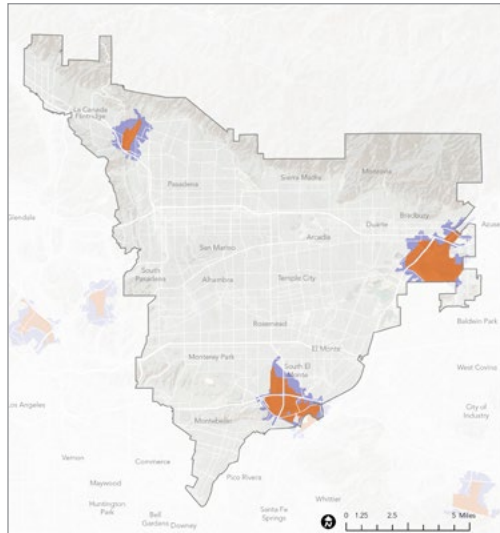


Map source: 2021 RRE Inventory



REGIONAL RECREATION PARK ACCESS

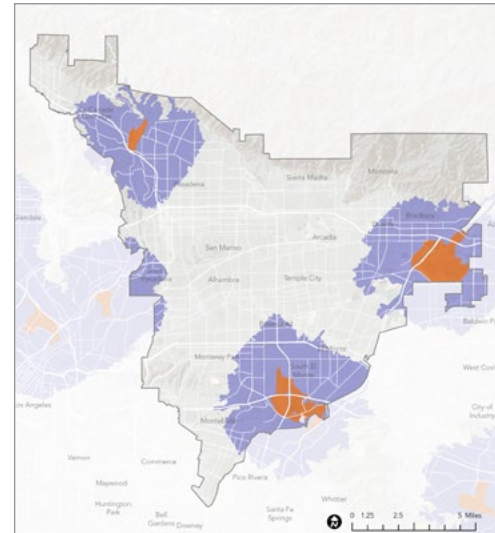
Walking Distance (0.5 miles from entry)



- Legend**
- Areas within a 0.5-mile walk of a Regional Recreation Park Entry
 - Regional Recreation Park
 - West San Gabriel Valley Study Area
 - Los Angeles County
 - Major Roads

2% **OF RESIDENTS LIVE WITHIN WALKING DISTANCE OF A REGIONAL RECREATION PARK**

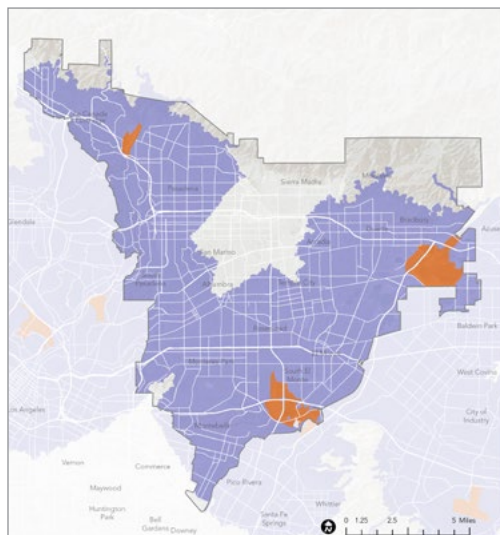
Cycling Distance (2.5 miles from entry)



- Legend**
- Areas within a 2.5-mile bicycle ride of a Regional Recreation Park Entry
 - Regional Recreation Park
 - West San Gabriel Valley Study Area
 - Los Angeles County
 - Major Roads

29% **OF RESIDENTS LIVE WITHIN CYCLING DISTANCE OF A REGIONAL RECREATION PARK**

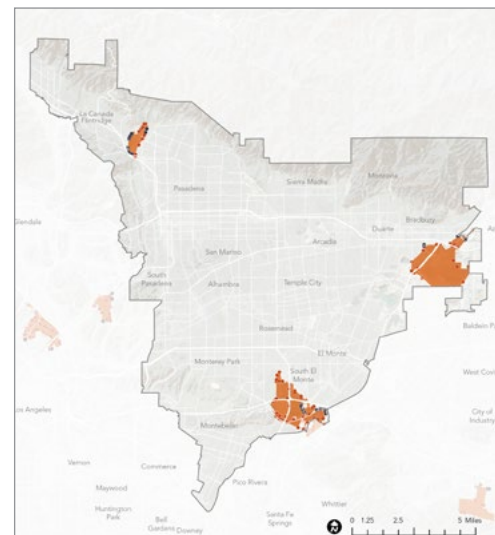
Driving Distance (5 miles from entry)



- Legend**
- Areas within a 5-mile drive of a Regional Recreation Park Entry
 - Regional Recreation Park
 - West San Gabriel Valley Study Area
 - Los Angeles County
 - Major Roads

87% **OF RESIDENTS LIVE WITHIN DRIVING DISTANCE OF A REGIONAL RECREATION PARK**

Transit Service (entry is within 0.5 miles of transit stop)

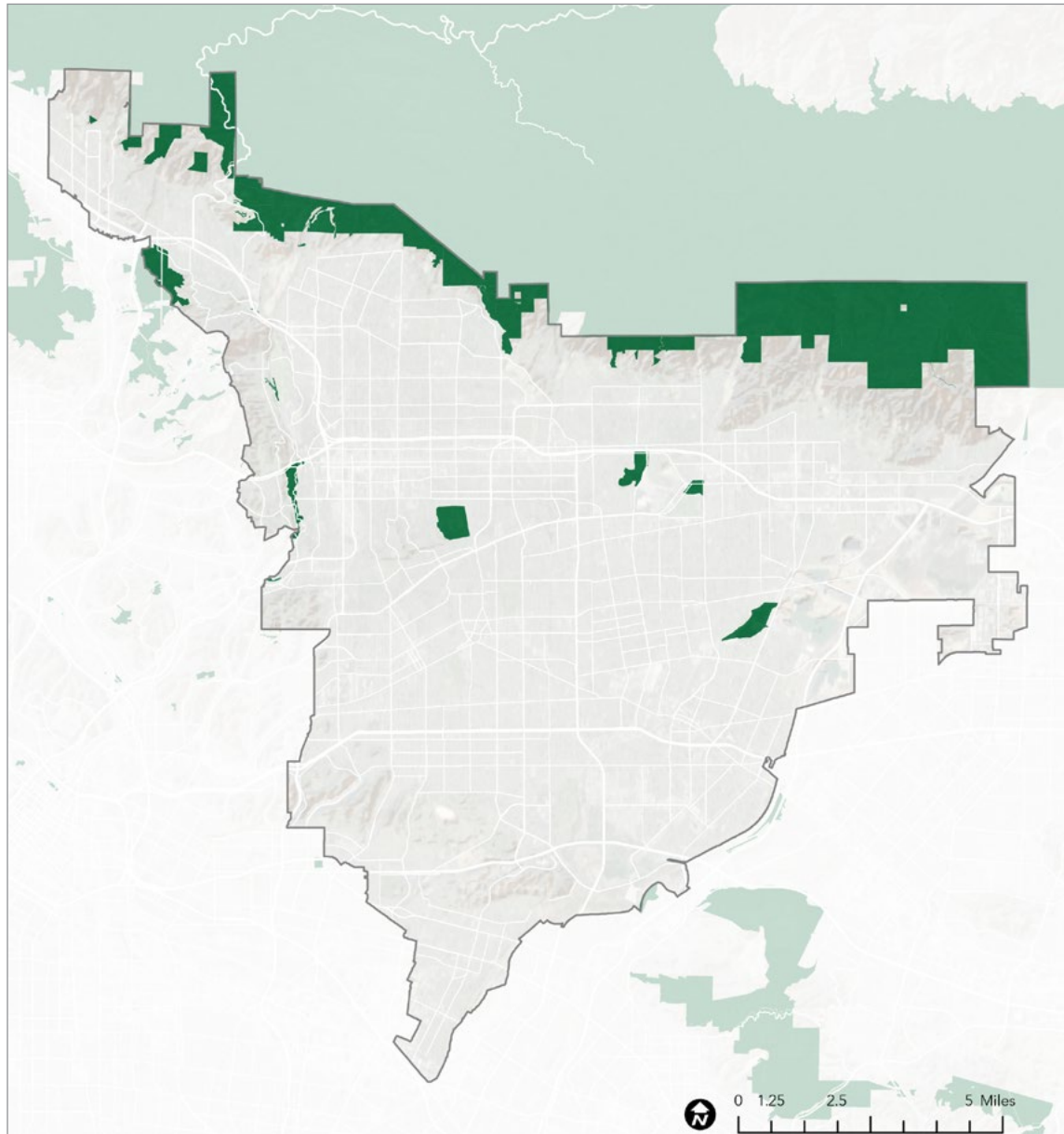


- Legend**
- Entry Point Served by Public Transit (located within a half mile of a Transit Stop)
 - Entry Point Not Served by Public Transit (not located within a half mile of a Transit Stop)
 - Regional Recreation Park
 - West San Gabriel Valley Study Area
 - Los Angeles County
 - Major Roads

75% **OF REGIONAL RECREATION PARK ENTRANCES ARE LOCATED WITHIN A HALF-MILE WALK OF A PUBLIC TRANSIT STOP**

Maps source: ArcGIS StreetMap Premium, 2021; 2021 RRE Inventory

NATURE-BASED RECREATION AREAS



9,663

**ACRES OF NATURE-BASED
RECREATION AREA LAND**



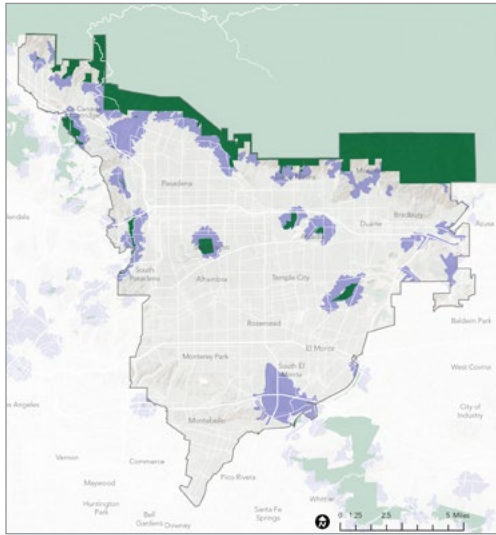
11

**ACRES OF NATURE-BASED
RECREATION AREA LAND PER
1,000 REGIONAL STUDY AREA
RESIDENTS**

Map source: 2021 RRE Inventory

NATURE-BASED RECREATION AREA ACCESS

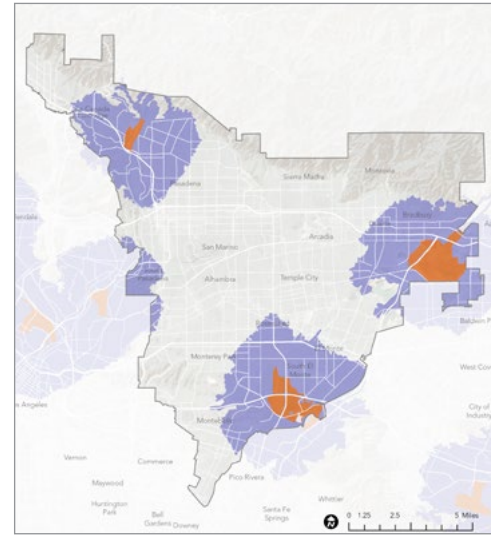
Walking Distance (0.5 miles from entry)



- Legend**
- Areas within a 0.5-mile walk of a Nature-Based Recreation Area Entry
 - Nature-Based Recreation Area
 - West San Gabriel Valley Study Area
 - Los Angeles County
 - Major Roads

7% 
OF STUDY AREA RESIDENTS LIVE WITHIN WALKING DISTANCE OF A NATURE-BASED RECREATION AREA

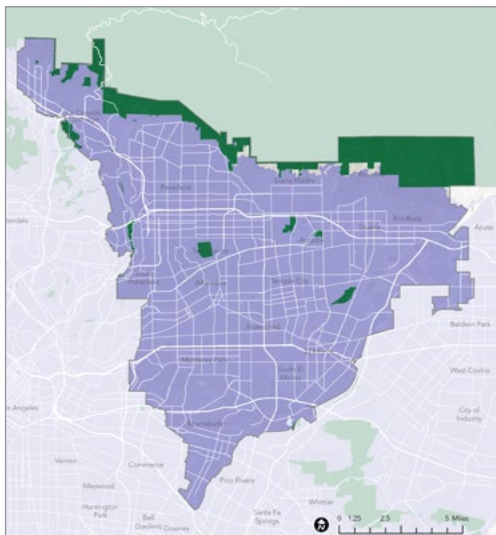
Cycling Distance (2.5 miles from entry)



- Legend**
- Areas within a 2.5-mile bicycle ride of a Regional Recreation Park Entry
 - Regional Recreation Park
 - West San Gabriel Valley Study Area
 - Los Angeles County
 - Major Roads

79% 
OF STUDY AREA RESIDENTS LIVE WITHIN CYCLING DISTANCE OF A NATURE-BASED RECREATION AREA

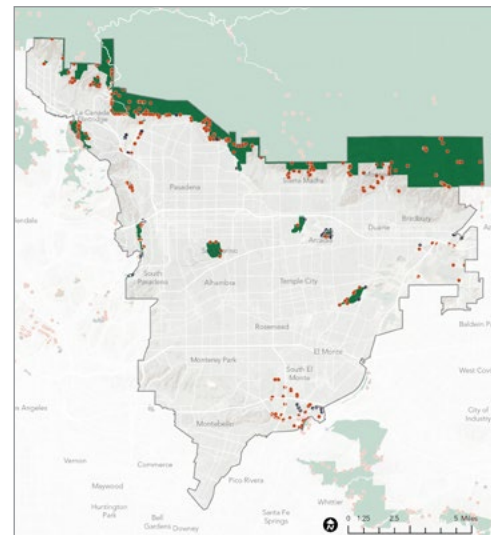
Driving Distance (5 miles from entry)



- Legend**
- Areas within a 5-mile drive of a Nature-Based Recreation Area Entry
 - Nature-Based Recreation Area
 - West San Gabriel Valley Study Area
 - Los Angeles County
 - Major Roads

100% 
OF STUDY AREA RESIDENTS LIVE WITHIN DRIVING DISTANCE OF A NATURE-BASED RECREATION AREA

Transit Service (entry is within 0.5 miles of transit stop)



- Legend**
- Entry Point Served by Public Transit (located within a half mile of a Transit Stop)
 - Entry Point Not Served by Public Transit (not located within a half mile of a Transit Stop)
 - Nature-Based Recreation Area
 - West San Gabriel Valley Study Area
 - Los Angeles County
 - Major Roads

27% 
OF NATURE-BASED RECREATION AREA ENTRY POINTS AREA SERVED BY PUBLIC TRANSIT

Maps source: ArcGIS StreetMap Premium, 2021; 2021 RRE Inventory

REGIONAL RECREATION AMENITIES



GATHERING SPACES



0
Group Picnic Areas



39
Individual Picnic Areas



18
Indoor Event Spaces



33
Outdoor Event Spaces



SPORTS FACILITIES



20
Shooting Ranges



0
Archery Ranges



0
Snowsport Facilities



TRAILS AND PATHWAYS



0
Rock Climbing Areas



208
Trailheads



WATER-BASED RECREATION



3
Boating Areas



4
Swimming Areas



1
Watersport Facilities



10
Waterfront Access Areas



4
Fishing Areas



OVERNIGHT ACCOMMODATIONS



58
Tent Campsites



0
RV Campsites



EXPERIENTIAL LEARNING OPPORTUNITIES



14
Visitor Centers



12
Environmental Learning Facilities



4
Gardens



SUPPORT FACILITIES



13
Concessions



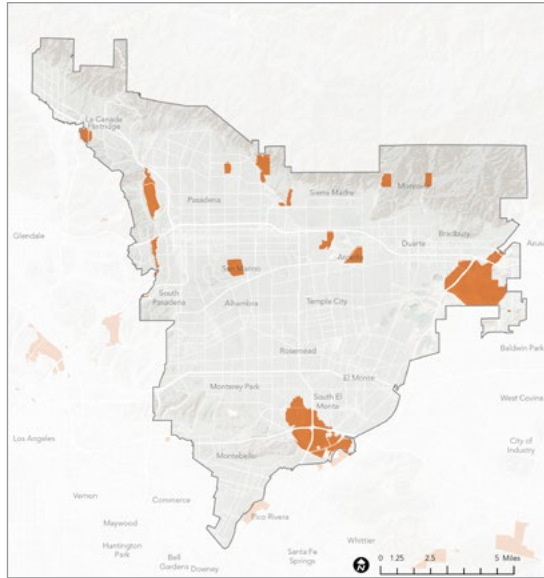
17,544
Parking Spaces



86
Restrooms

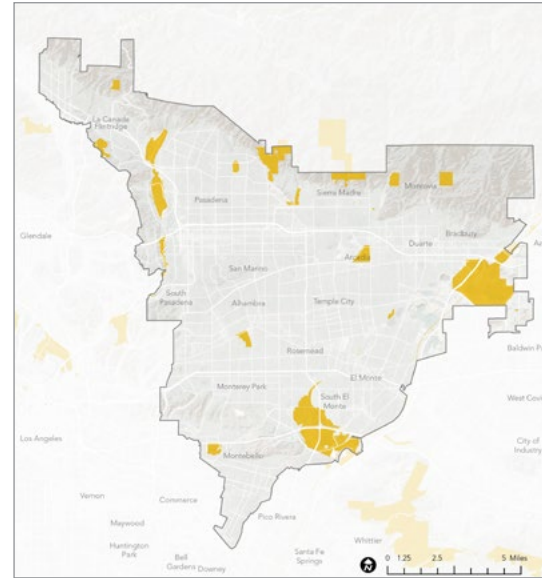
REGIONAL RECREATION OPPORTUNITY TYPES

Gathering Spaces



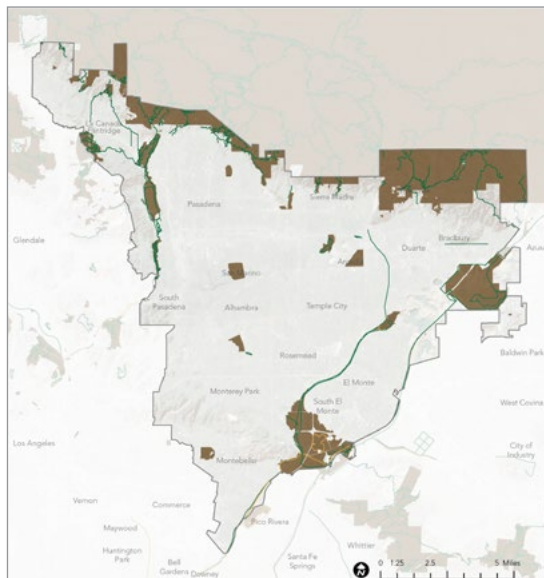
- Legend**
- Regional Sites with Gathering Spaces
 - West San Gabriel Valley Study Area
 - Los Angeles County
 - Major Roads

Sports Facilities



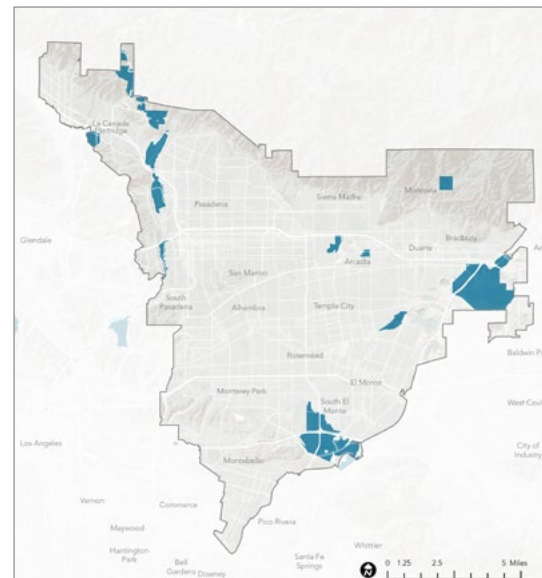
- Legend**
- Regional Sites with Sports Facilities
 - West San Gabriel Valley Study Area
 - Los Angeles County
 - Major Roads

Trails and Pathways



- Legend**
- Regional Sites with Trails and Pathways
 - Regional Trails
 - Regional Bikeways
 - West San Gabriel Valley Study Area
 - Los Angeles County
 - Major Roads

Water-Based Recreation

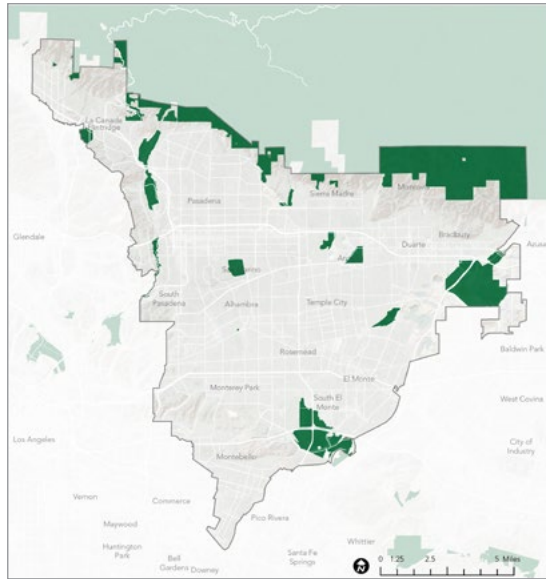


- Legend**
- Regional Sites with Water-Based Recreation
 - West San Gabriel Valley Study Area
 - Los Angeles County
 - Major Roads

Maps source: 2021 RRE Inventory

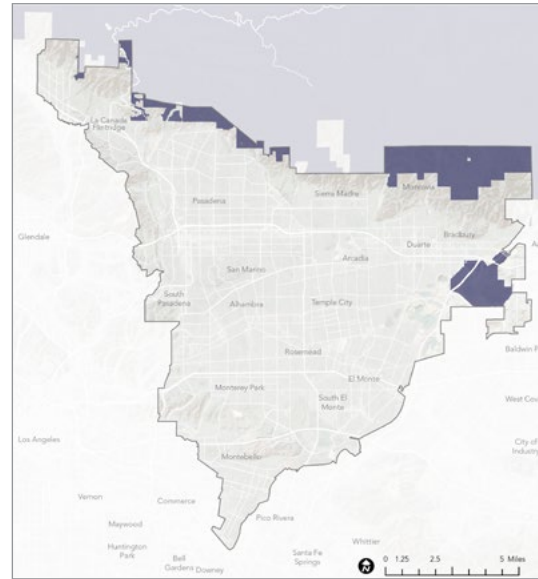
REGIONAL RECREATION AMENITY ANALYSIS

Experiential Learning Opportunities



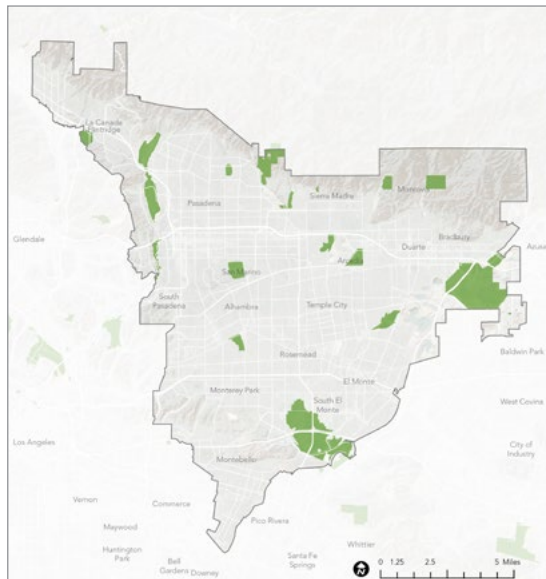
- Legend**
- Regional Sites with Experiential Learning Opportunities
 - West San Gabriel Valley Study Area
 - Los Angeles County
 - Major Roads

Overnight Accommodations



- Legend**
- Regional Sites with Overnight Accommodations
 - West San Gabriel Valley Study Area
 - Los Angeles County
 - Major Roads

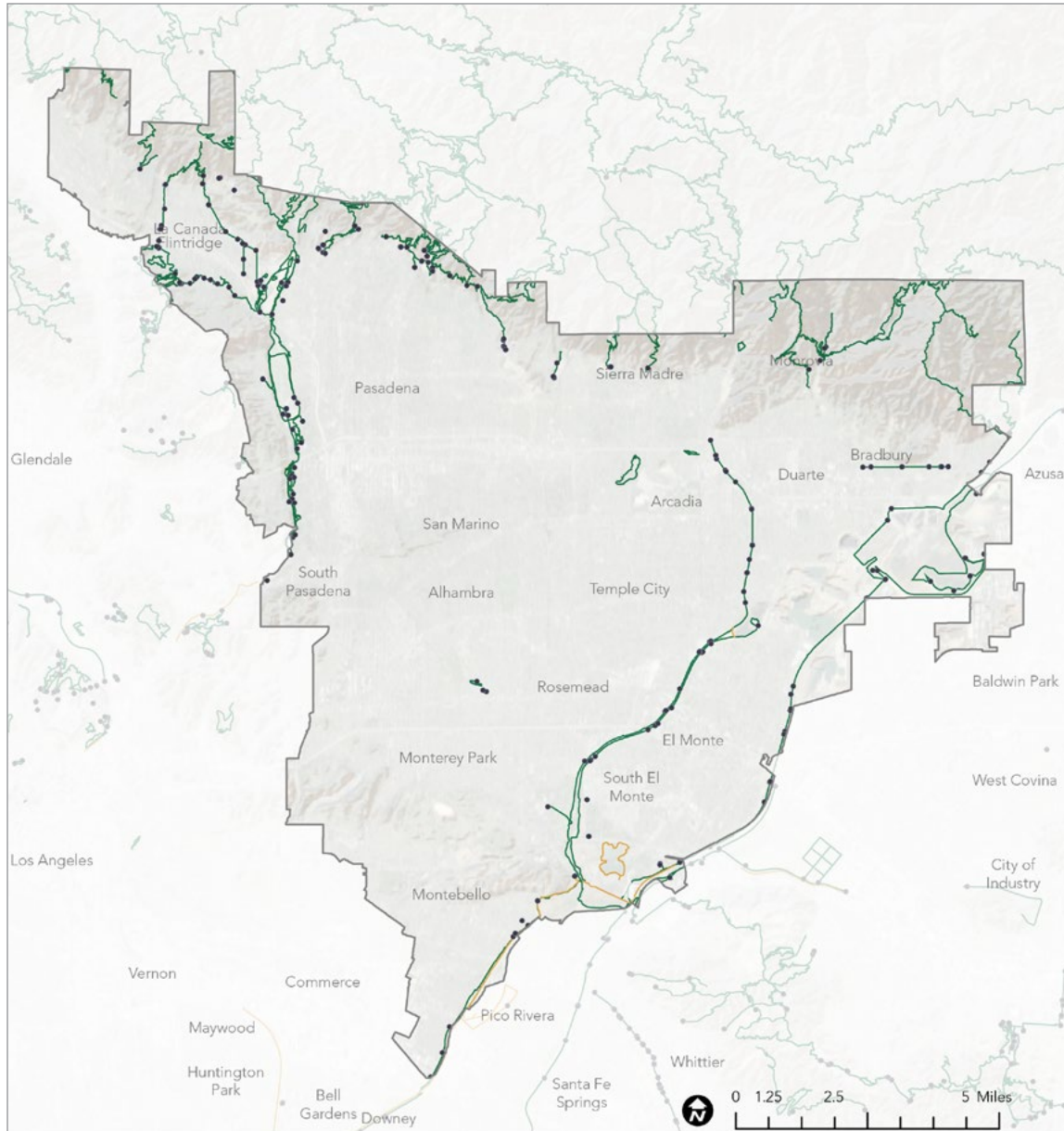
Support Facilities



- Legend**
- Regional Sites with Support Facilities
 - West San Gabriel Valley Study Area
 - Los Angeles County
 - Major Roads

Maps source: 2021 RRE Inventory

REGIONAL TRAILS



Map source: LAC DPR, 2021; 2021 RRE Inventory

Legend

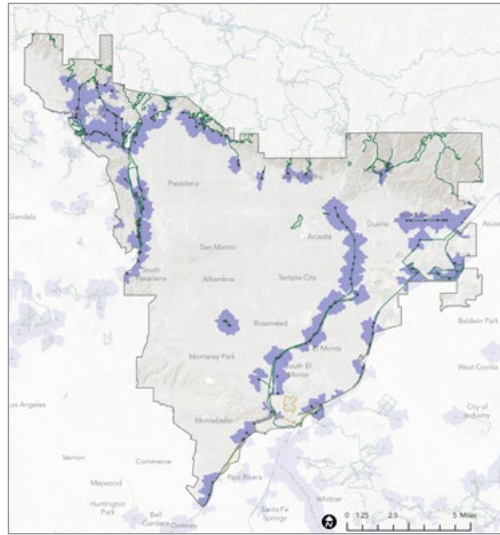
- Regional Trails
- Regional Bikeways
- Trailheads and Access Points
- ▭ Westside Regional Study Area
- ▭ Los Angeles County
- ▭ Major Roads

149
MILES OF REGIONAL TRAIL

0.16
MILES OF REGIONAL TRAIL PER 1,000 STUDY AREA RESIDENTS

REGIONAL TRAIL ACCESS

Walking Distance (0.5 miles from entry)



- Legend**
- Areas within a 0.5-mile walk of a Trailhead or Access Point
 - Regional Trails
 - Regional Bikeways
 - Trailheads and Access Points
 - West San Gabriel Valley Study Area
 - Los Angeles County
 - Major Roads

13% **OF STUDY AREA RESIDENTS LIVE WITHIN WALKING DISTANCE OF A TRAILHEAD**

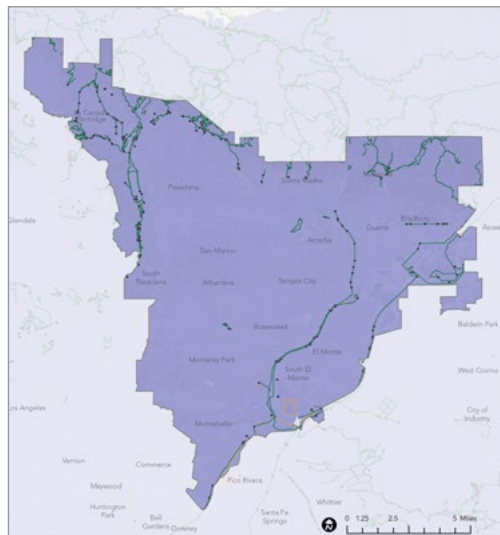
Cycling Distance (2.5 miles from entry)



- Legend**
- Areas within a 2.5-mile bicycle ride of a Trailhead or Access Point
 - Regional Trails
 - Regional Bikeways
 - Trailheads and Access Points
 - West San Gabriel Valley Study Area
 - Los Angeles County
 - Major Roads

100% **OF STUDY AREA RESIDENTS LIVE WITHIN CYCLING DISTANCE OF A TRAILHEAD**

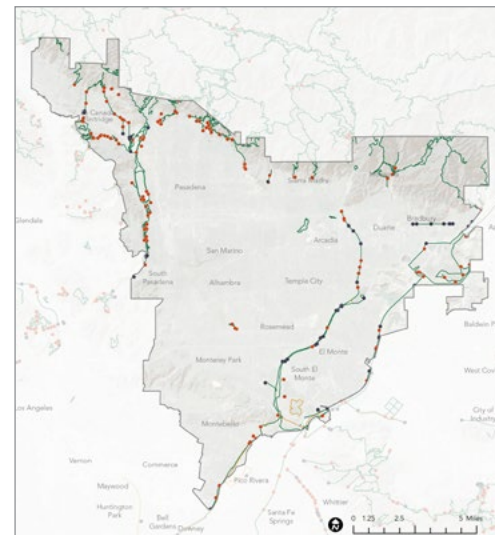
Driving Distance (5 miles from entry)



- Legend**
- Areas within a 5-mile drive of a Trailhead or Access Point
 - Regional Trails
 - Regional Bikeways
 - Trailheads and Access Points
 - West San Gabriel Valley Study Area
 - Los Angeles County
 - Major Roads

100% **OF STUDY AREA RESIDENTS LIVE WITHIN DRIVING DISTANCE OF A TRAILHEAD**

Transit Service (entry is within 0.5 miles of transit stop)

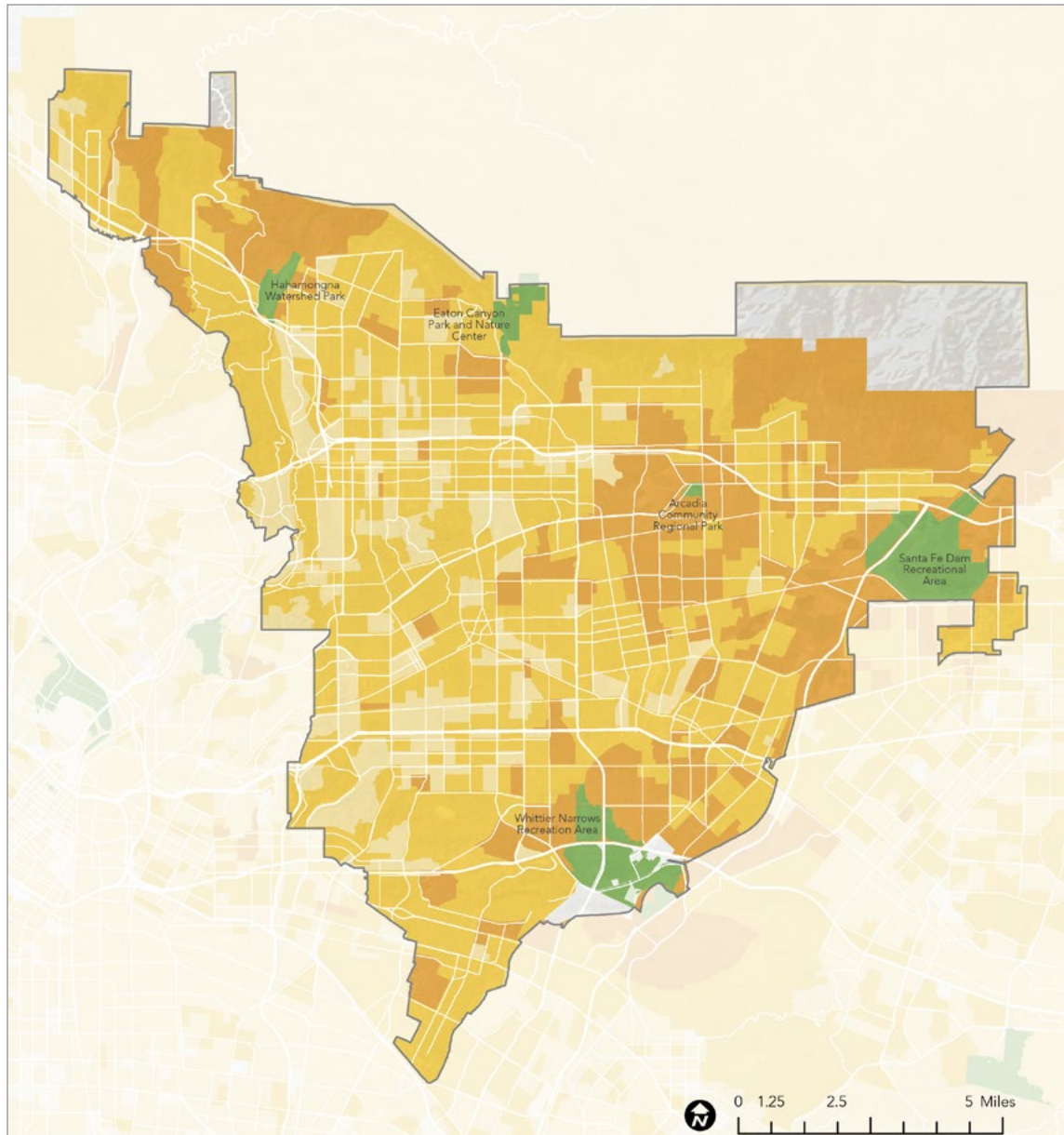


- Legend**
- Trailhead or Access Point Served by Public Transit (located within a half mile walk of a Transit Stop)
 - Trailhead or Access Point Not Served by Public Transit (not located within a half mile walk of a Transit Stop)
 - Regional Trails
 - Regional Bikeways
 - West San Gabriel Valley Study Area
 - Los Angeles County
 - Major Roads

30% **OF TRAILHEADS ARE SERVED BY PUBLIC TRANSIT**

Maps source: LAC DPR, 2021; ArcGIS StreetMap Premium, 2021; 2021 RRE Inventory

REGIONAL SITE VISITORSHIP



Map source: Unacast, 2021; 2021 RRE Inventory



REGIONAL SITES INCLUDED IN VISITORSHIP ANALYSIS

- » Eaton Canyon Natural Area and Nature Center
- » Arcadia Community Regional Park
- » Hahamongna Watershed Park
- » Santa Fe Dam Recreational Area
- » Whittier Narrows Recreation Area

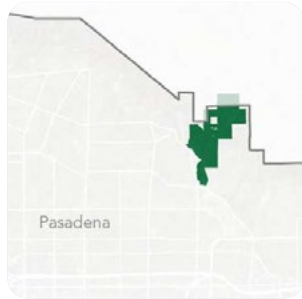
VISITORSHIP REPORT 2019 - 2020

Eaton Canyon Natural Area and Nature Center



VITAL STATISTICS

ANNUAL VISITORSHIP / VISITOR ORIGIN



KEY PARK AMENITIES

- Nature Center
- Animal Exhibits
- Equestrian Facilities
- Group Picnic Areas
- Hiking Trails

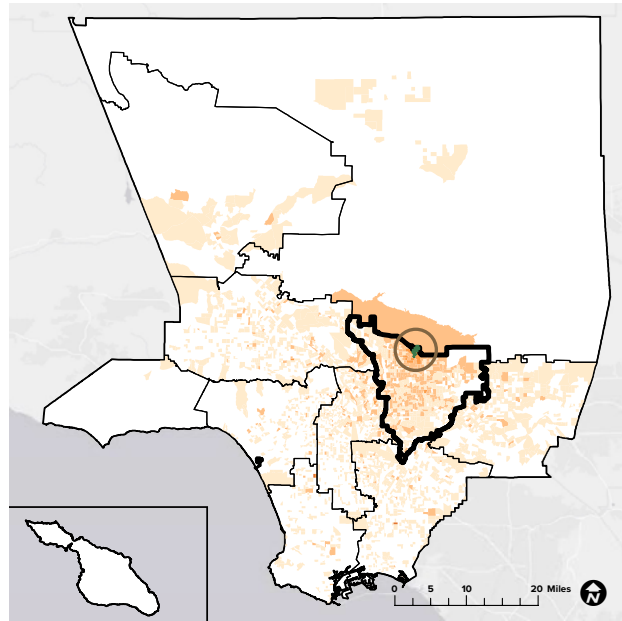
DESCRIPTION

Eaton Canyon Natural Area Park and Nature Center is a natural preserve located at the base of the San Gabriel Mountains. This 198-acre natural area was named after Judge Benjamin Eaton a progressive pioneer, who was the first to use irrigation from Eaton creek to grow grapes on the slopes. Visitors can explore Eaton Canyon's expansive hiking and equestrian trails, along with a staging area, seasonal streams, abundant native plants and wildlife and a nature center with displays, live animals, classrooms, an auditorium and a gift shop. The Nature Center hosts a variety of programming, such as the Young Naturalist After School Club, Nature Tails Docent Led Storytime Reading and seasonal events.

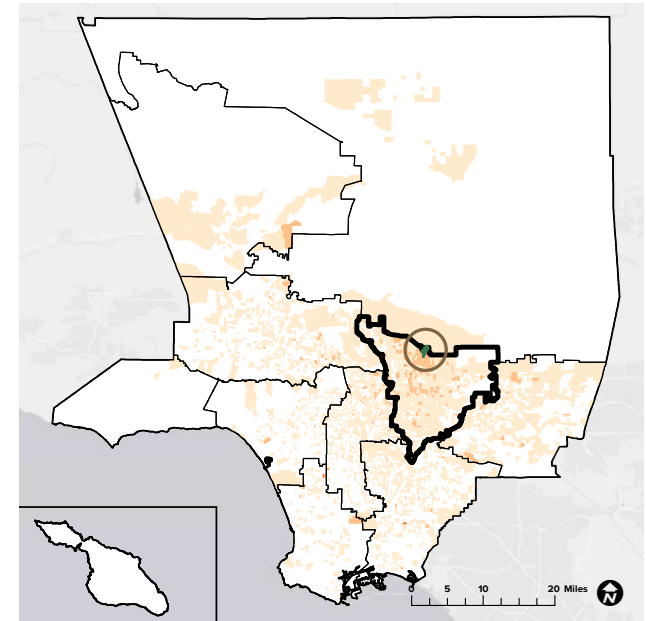
WEBSITE

www.parks.lacounty.gov/eaton-canyon-natural-area-and-nature-center/

2019
188,761 visitors



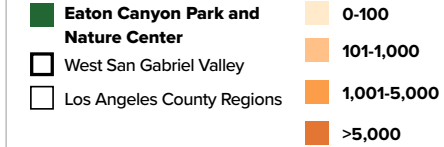
2020
101,438 visitors



90%
originated from within LA County

10%
originated from outside LA County

38%
originated from West San Gabriel Valley.



92%
originated from within LA County

8%
originated from outside LA County

35%
originated from West San Gabriel Valley.

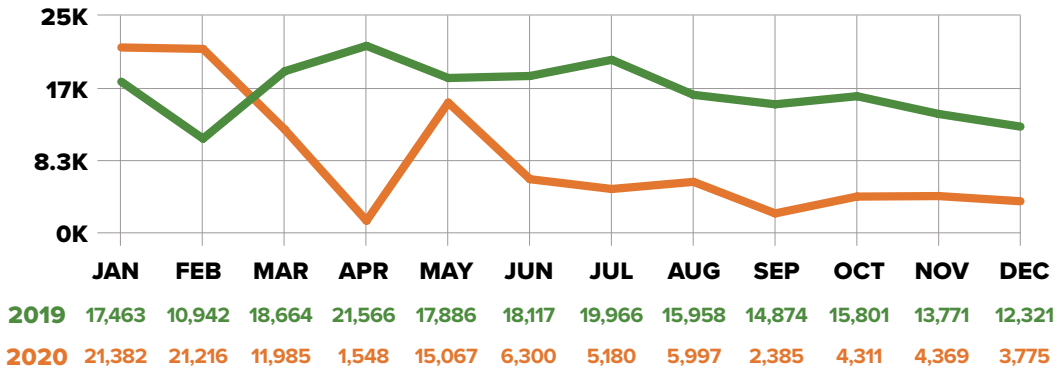
Sources: Unacast 2021 (LA County DPR 2020, LA County PNA 2016, ESRI 2021)

VISITORSHIP REPORT 2019 - 2020

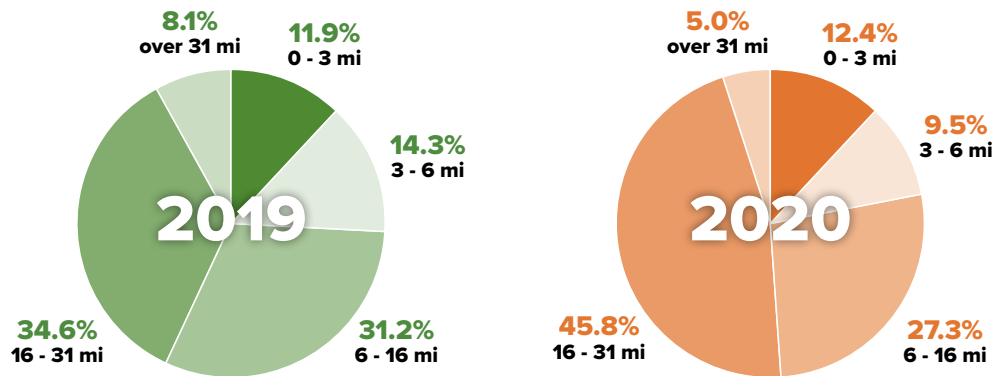
Eaton Canyon Natural Area and Nature Center



MONTHLY VISITORSHIP



TRAVEL DISTANCE



DEMOGRAPHICS

EDUCATION

	High School Diploma	Some College, No Degree	Associates Degree	Bachelors Degree	Masters Degree & Above
2019	16.2%	17.6%	6.5%	19.1%	7.6%
2020	16.2%	21.7%	6.2%	16.3%	6.4%

INCOME

	Less than \$24,999	\$25,000 - \$49,999	\$50,000 - \$74,999	\$75,000 - \$99,999	\$100,000 - \$124,999	More than \$125,000
2019	17.9%	15.7%	20.4%	12.4%	10.0%	23.4%
2020	16.8%	16.7%	21.0%	13.2%	10.8%	21.5%

GENDER IDENTITY

	Male	Female
2019	48.6%	51.4%
2020	48.3%	51.7%

RACE/ETHNICITY

	Amer-Indian	Asian	Black	Hispanic	White	2 or More	Other
2019	0.2%	18.7%	8.3%	38.5%	30.3%	3.0%	0.3%
2020	0.3%	14.3%	13.5%	40.5%	26.9%	2.8%	0.2%

AGE

	18-29	30-39	40-49	50-59	60-69	70-79	80+
2019	22.4%	18.5%	17.6%	17.3%	12.9%	6.8%	4.5%
2020	22.1%	19.6%	17.7%	17.9%	13.0%	5.8%	3.8%

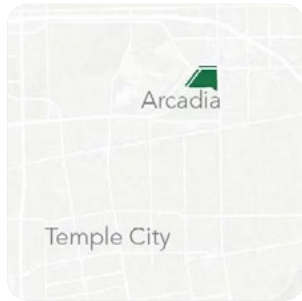
VISITORSHIP REPORT 2019 - 2020

Arcadia Community Regional Park



VITAL STATISTICS

ANNUAL VISITORSHIP / VISITOR ORIGIN



KEY PARK AMENITIES

- Community Center/Senior Center
- Group Picnic Areas
- Splash Pad
- Swimming Pool
- Tennis Courts
- Baseball Fields
- Softball Fields
- Horseshoe Pits
- Lawn Bowling Greens
- Children's Play Area
- Concession Stands
- Fitness Zones

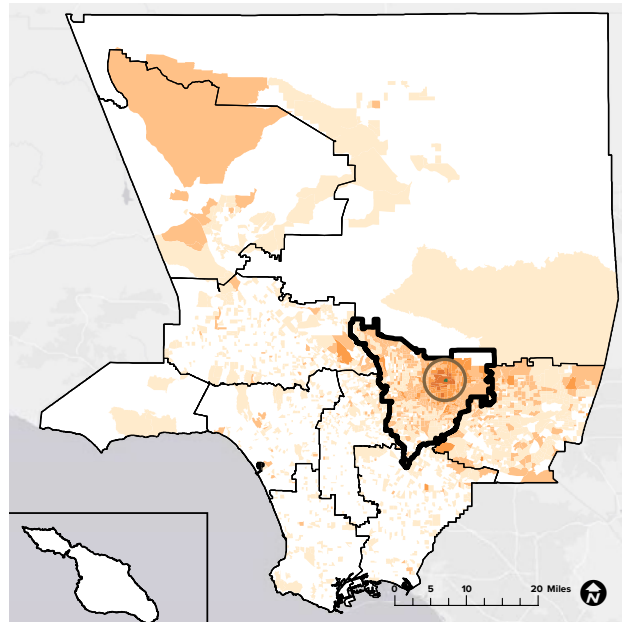
DESCRIPTION

Arcadia Community Regional Park is a beautiful open space in the city of Arcadia, CA. The park has a senior center, children's play areas, community centers, multipurpose rooms, outdoor kitchens and picnic areas, barbecues and restrooms. Visitors can partake in various sporting activities at the park's swimming pools, wading pools, tennis courts, fitness zones, horseshoe pits, lawn bowling greens and softball and baseball fields.

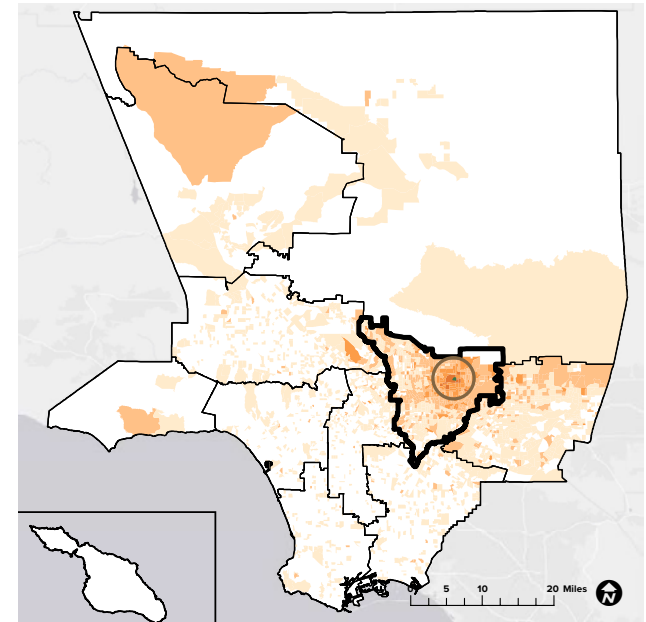
WEBSITE

www.parks.lacounty.gov/arcadia-community-regional-park/

2019
621,051 visitors



2020
445,788 visitors



82%
originated from within LA County

18%
originated from outside LA County

65%
originated from West San Gabriel Valley

Arcadia Community Regional Park

- West San Gabriel Valley
- Los Angeles County Regions

- 0-100
- 101-1,000
- 1,001-5,000
- >5,000

86%
originated from within LA County

14%
originated from outside LA County

68%
originated from West San Gabriel Valley

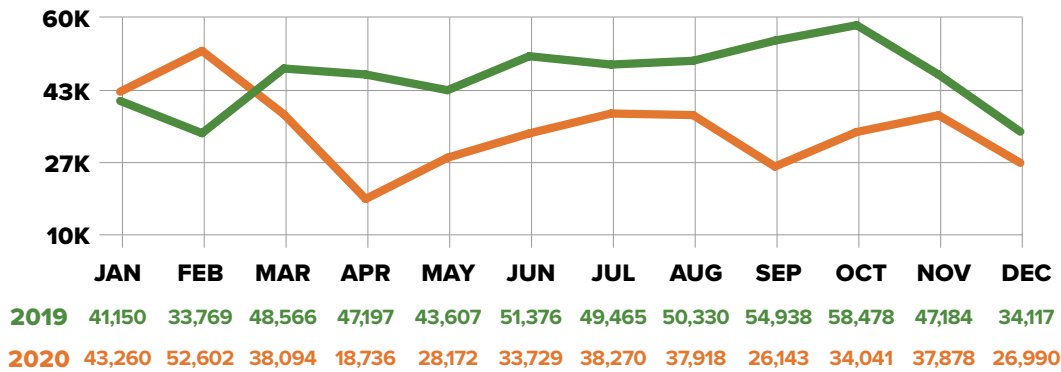
Sources: Unacast 2021 (LA County DPR 2020, LA County PNA 2016, ESRI 2021)

VISITORSHIP REPORT 2019 - 2020

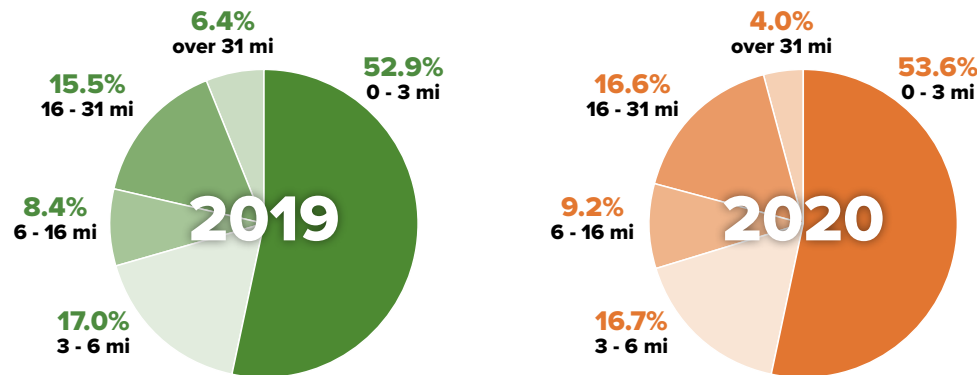
Arcadia Community Regional Park



MONTHLY VISITORSHIP



TRAVEL DISTANCE



DEMOGRAPHICS

EDUCATION

	High School Diploma	Some College, No Degree	Associates Degree	Bachelors Degree	Masters Degree & Above
2019	14.9%	15.6%	7.7%	24.0%	9.9%
2020	15.0%	15.3%	7.3%	24.1%	9.6%

INCOME

	Less than \$24,999	\$25,000 - \$49,999	\$50,000 - \$74,999	\$75,000 - \$99,999	\$100,000 - \$124,999	More than \$125,000
2019	15.9%	14.0%	18.0%	12.1%	10.9%	29.0%
2020	16.5%	14.7%	18.2%	12.6%	10.5%	27.5%

GENDER IDENTITY

	Male	Female
2019	47.2%	52.8%
2020	47.2%	52.8%

RACE/ETHNICITY

	Amer-Indian	Asian	Black	Hispanic	White	2 or More	Other
2019	0.2%	39.1%	2.7%	27.8%	27.0%	2.7%	0.3%
2020	0.2%	41.0%	2.6%	28.2%	25.2%	2.4%	0.3%

AGE

	18-29	30-39	40-49	50-59	60-69	70-79	80+
2019	18.4%	15.6%	19.2%	18.3%	14.3%	8.4%	5.6%
2020	18.5%	15.2%	18.9%	19.4%	13.9%	8.2%	5.8%

VISITORSHIP REPORT 2019 - 2020

Hahamongna Watershed Park



VITAL STATISTICS

ANNUAL VISITORSHIP / VISITOR ORIGIN



KEY PARK AMENITIES

- Disc Golf Course
- Multi-Purpose Field
- Equestrian Facilities
- Hiking Trails
- Biking Trails
- Picnic Areas

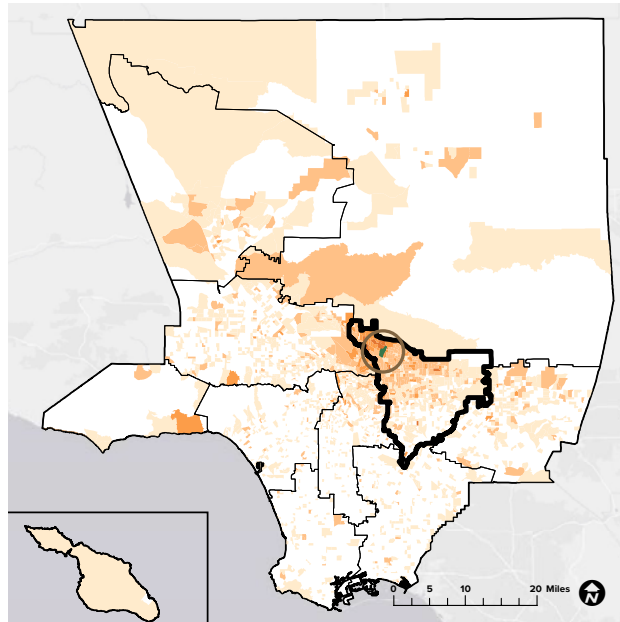
DESCRIPTION

Hahamongna Watershed Park is located in the Arroyo Seco and extends from Devil's Gate Dam North into the San Gabriel Mountains. The 1300-acre park has a multipurpose athletic field, a 24-hole frisbee golf course and an extensive network of biking and hiking trails. Trails are pet-friendly and offer views of the San Gabriel Mountains. There is an equestrian center and trails are open for horses, mountain bikers, and hikers alike. Visitors can enjoy the numerous picnic areas, barbecue pits, restrooms and drinking fountains.

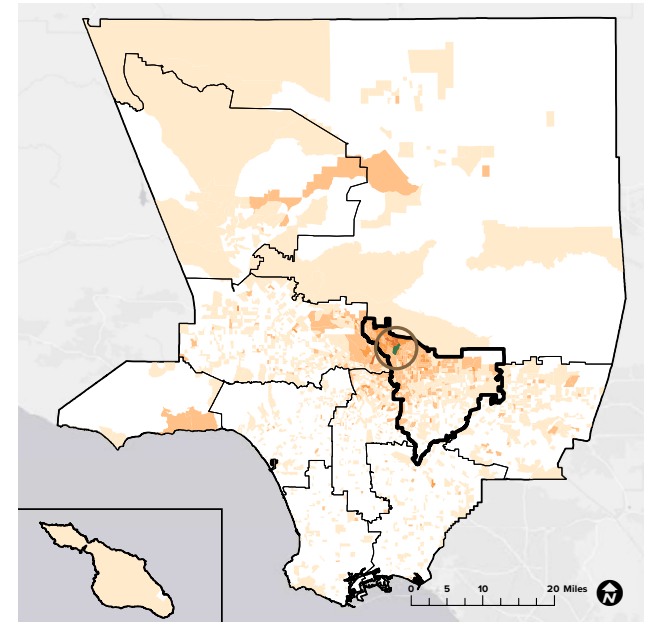
WEBSITE

www.cityofpasadena.net/parks-and-rec/parks/hahamongna-watershed-park/

2019
416,939 visitors



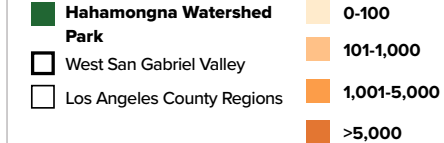
2020
289,803 visitors



84%
originated from within LA County

16%
originated from outside LA County

53%
originated from West San Gabriel Valley



87%
originated from within LA County

13%
originated from outside LA County

52%
originated from West San Gabriel Valley

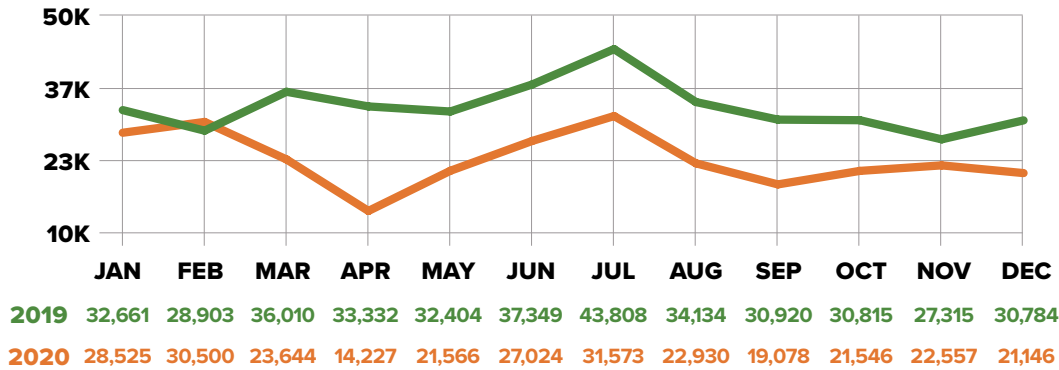
Sources: Unacast 2021 (LA County DPR 2020, LA County PNA 2016, ESRI 2021)

VISITORSHIP REPORT 2019 - 2020

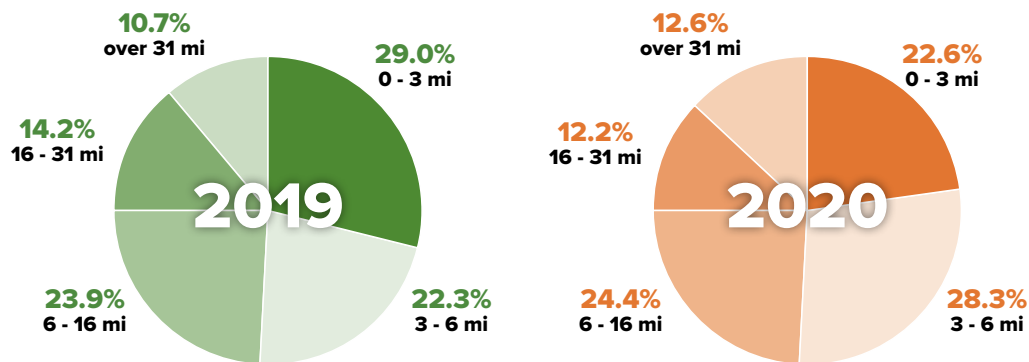
Hahamongna Watershed Park



MONTHLY VISITORSHIP



TRAVEL DISTANCE



DEMOGRAPHICS

EDUCATION

	High School Diploma	Some College, No Degree	Associates Degree	Bachelors Degree	Masters Degree & Above
2019	12.7%	15.5%	6.7%	24.5%	10.5%
2020	13.7%	15.7%	6.5%	21.9%	9.7%

INCOME

	Less than \$24,999	\$25,000 - \$49,999	\$50,000 - \$74,999	\$75,000 - \$99,999	\$100,000 - \$124,999	More than \$125,000
2019	14.3%	14.6%	16.9%	11.9%	10.0%	32.1%
2020	15.3%	15.9%	17.7%	13.0%	9.4%	28.5%

GENDER IDENTITY

	Male	Female
2019	47.2%	52.8%
2020	47.3%	52.7%

RACE/ETHNICITY

	Amer-Indian	Asian	Black	Hispanic	White	2 or More	Other
2019	0.2%	17.4%	7.6%	30.1%	41.1%	3.1%	0.4%
2020	0.1%	15.2%	7.3%	36.7%	37.4%	2.7%	0.4%

AGE

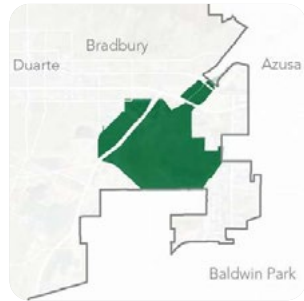
	18-29	30-39	40-49	50-59	60-69	70-79	80+
2019	20.5%	16.8%	17.7%	18.0%	14.1%	7.8%	5.2%
2020	21.1%	18.2%	17.6%	16.6%	13.8%	8.1%	4.7%

VISITORSHIP REPORT 2019 - 2020

Santa Fe Dam Recreational Area



VITAL STATISTICS



KEY PARK AMENITIES

- Nature Center
- Lake Access
- Swimming Beach
- Children's Play Area
- Fitness Zone
- Splash Pad
- Boating Areas
- Camping Sites
- Concession Stands
- Hiking Trails
- Biking Trails
- Equestrian Trails
- Fishing Lakes
- Volleyball Courts
- Model Airplane Area
- Group Picnic Areas

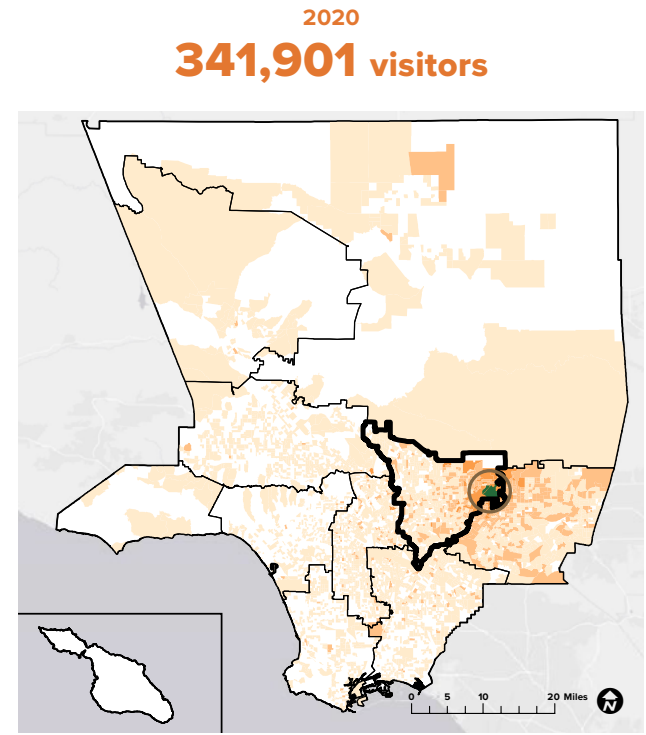
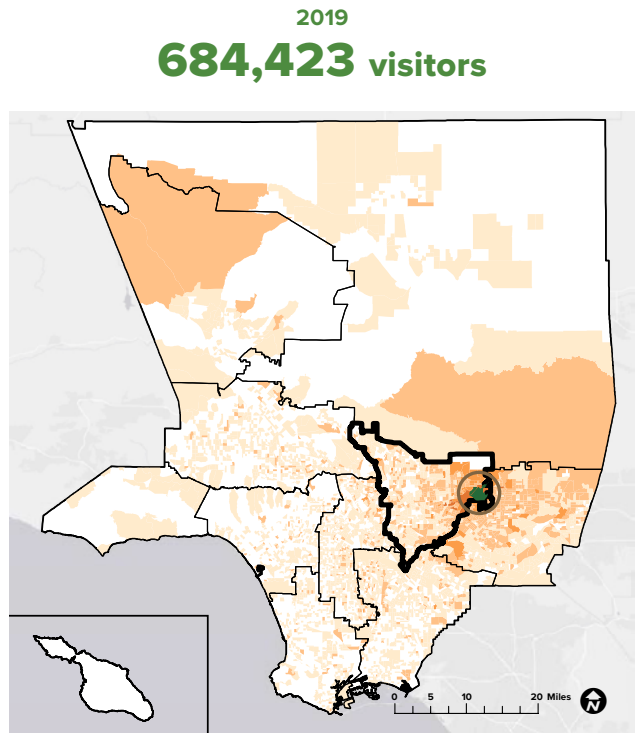
DESCRIPTION

Santa Fe Dam Recreational Area is located at the foot of the San Gabriel Mountains in Baldwin Park. The recreational area is 836 acres, with a 70-acre lake open for year-round fishing and non-motorized watercraft usage. During the summer, visitors can access a water play area, boat rentals, picnic areas, hiking trails, volleyball courts, nature and bird walks, horseback riding, fitness zones and concession stands. The recreational area is home to many protected native plants and animals. The Nature Center is operated and staffed by volunteers from the San Gabriel Mountains Regional Conservancy and offers year-round educational walking tours.

WEBSITE

www.parks.lacounty.gov/santa-fe-dam-recreational-area/

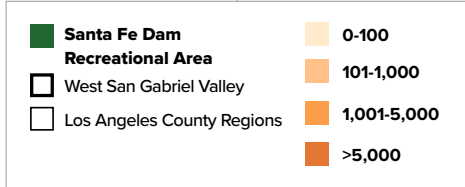
ANNUAL VISITORSHIP / VISITOR ORIGIN



62% originated from within LA County

38% originated from outside LA County

22% originated from West San Gabriel Valley



73% originated from within LA County

27% originated from outside LA County

25% originated from West San Gabriel Valley

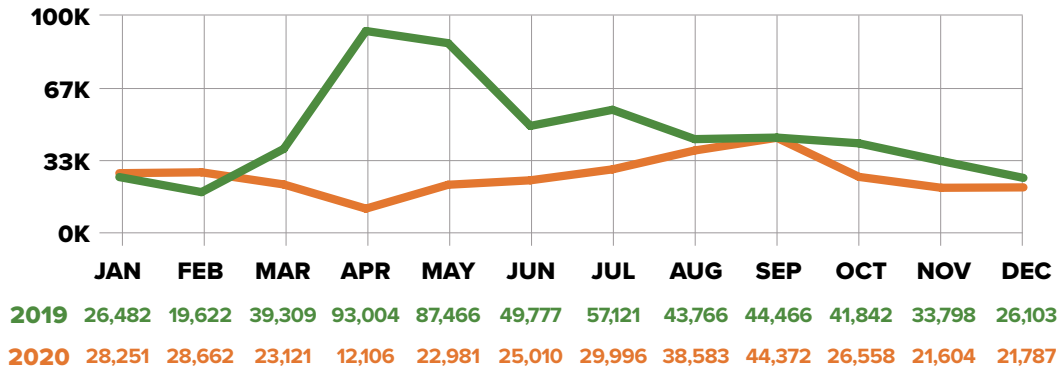
Sources: Unacast 2021 (LA County DPR 2020, LA County PNA 2016, ESRI 2021)

VISITORSHIP REPORT 2019 - 2020

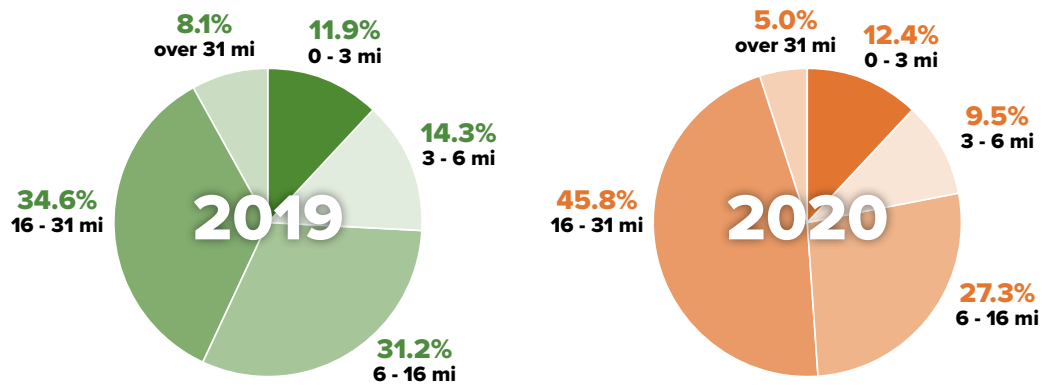
Santa Fe Dam Recreational Area



MONTHLY VISITORSHIP



TRAVEL DISTANCE



DEMOGRAPHICS

EDUCATION

	High School Diploma	Some College, No Degree	Associates Degree	Bachelors Degree	Masters Degree & Above
2019	18.5%	17.3%	6.6%	15.6%	5.7%
2020	19.8%	17.1%	6.4%	14.7%	5.0%

INCOME

	Less than \$24,999	\$25,000 - \$49,999	\$50,000 - \$74,999	\$75,000 - \$99,999	\$100,000 - \$124,999	More than \$125,000
2019	17.8%	17.5%	21.6%	13.0%	9.9%	19.6%
2020	18.0%	18.2%	22.4%	13.1%	9.6%	18.7%

GENDER IDENTITY

	Male	Female
2019	48.6%	51.3%
2020	48.9%	51.1%

RACE/ETHNICITY

	Amer-Indian	Asian	Black	Hispanic	White	2 or More	Other
2019	0.3%	18.3%	4.4%	51.0%	23.7%	1.8%	0.2%
2020	0.5%	17.8%	3.8%	54.7%	21.2%	1.6%	0.2%

AGE

	18-29	30-39	40-49	50-59	60-69	70-79	80+
2019	23.4%	17.5%	17.9%	17.3%	12.6%	6.9%	4.3%
2020	23.2%	17.7%	17.7%	17.1%	12.9%	7.0%	4.3%

VISITORSHIP REPORT 2019 - 2020

Whittier Narrows Recreation Area



VITAL STATISTICS

ANNUAL VISITORSHIP / VISITOR ORIGIN



KEY PARK AMENITIES

- Nature Center
- Museum
- Train Rides
- Community Garden
- Concession Stand
- Disc Golf Course
- Equestrian Facilities
- Baseball Fields
- Children's Play Areas
- Fitness Zones
- Picnic Areas
- Soccer Fields
- BMX Track
- Boating Areas
- Fishing Lakes
- Fitness Zone
- Group Picnic Areas
- Hiking Trails
- Biking Trails
- Horseshoe Pits
- Model Airplane Area
- Outdoor Performance Area
- Shooting Range
- Softball Fields
- Tennis Courts
- Volleyball Courts

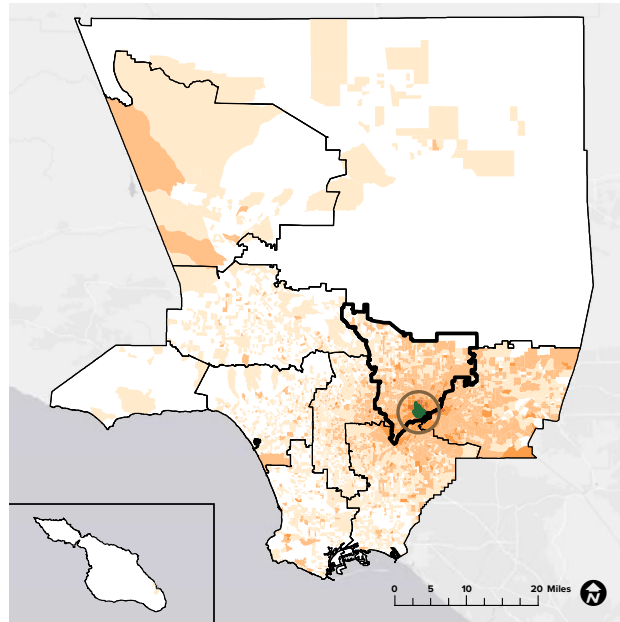
DESCRIPTION

Whittier Narrows Recreational Area is a 1,492-acre park located in the City of South El Monte and is one of Los Angeles County's largest and most popular recreation areas. The recreational area has many amenities for visitors to enjoy including fishing lakes, sports fields, picnic areas, fitness zones, boat rentals, community gardens, hiking trails, shooting ranges, volleyball and tennis courts, a military museum, a horse center, tram tours and train rides, a BMX track, a disc golf course and an urban farm. The Nature Center educates visitors on the many native plants and animals in the area and hosts many school group tours, guided nature walks and naturalist docent trainings.

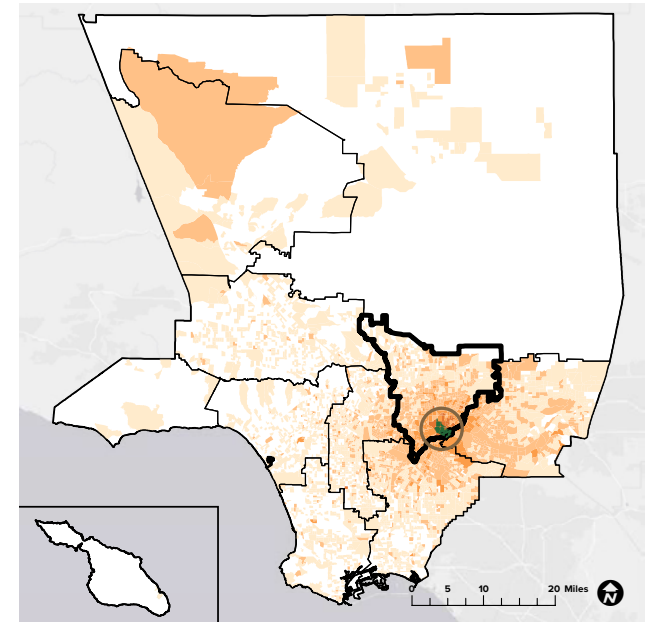
WEBSITE

www.parks.lacounty.gov/whittier-narrows-natural-area-and-nature-center/

2019
1,312,059 visitors



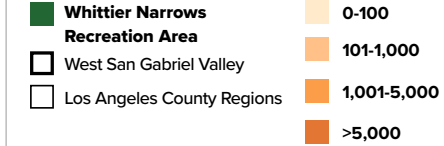
2020
1,201,693 visitors



69%
originated from within LA County

31%
originated from outside LA County

31%
originated from West San Gabriel Valley



76%
originated from within LA County

24%
originated from outside LA County

31%
originated from West San Gabriel Valley

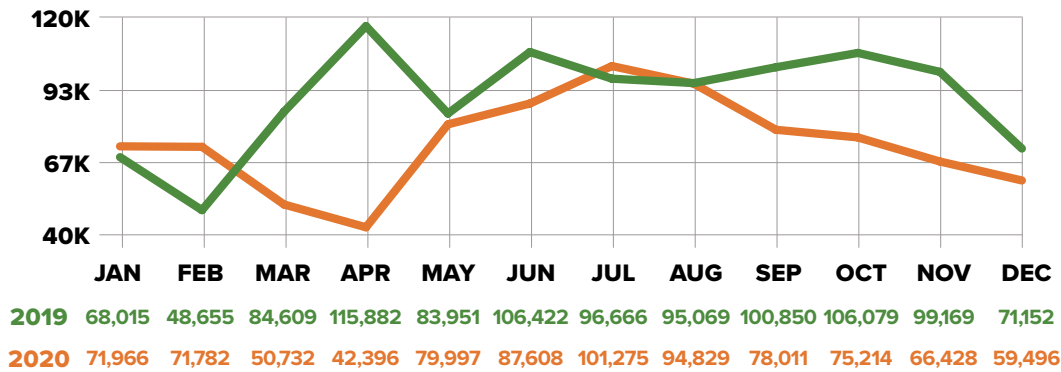
Sources: Unacast 2021 (LA County DPR 2020, LA County PNA 2016, ESRI 2021)

VISITORSHIP REPORT 2019 - 2020

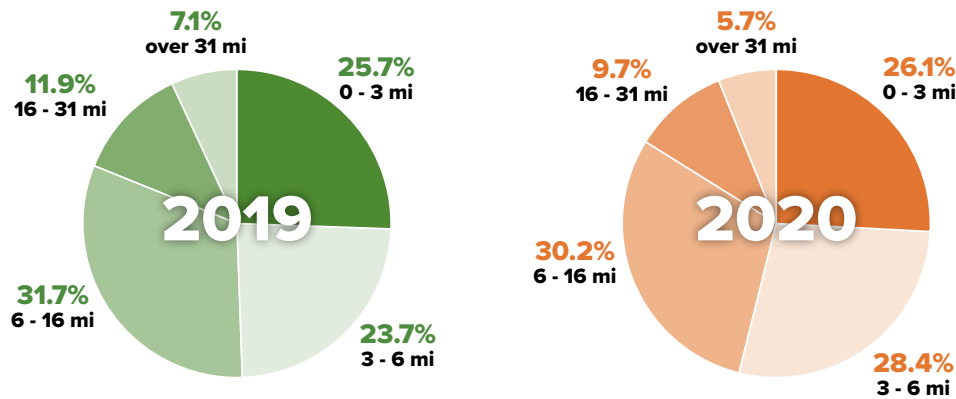
Whittier Narrows Recreation Area



MONTHLY VISITORSHIP



TRAVEL DISTANCE



DEMOGRAPHICS

EDUCATION

	High School Diploma	Some College, No Degree	Associates Degree	Bachelors Degree	Masters Degree & Above
2019	19.4%	15.4%	5.6%	12.8%	4.4%
2020	19.8%	14.9%	5.5%	12.5%	3.8%

INCOME

	Less than \$24,999	\$25,000 - \$49,999	\$50,000 - \$74,999	\$75,000 - \$99,999	\$100,000 - \$124,999	More than \$125,000
2019	21.2%	19.5%	21.8%	12.4%	8.5%	16.4%
2020	22.1%	20.0%	22.5%	12.4%	7.9%	15.0%

GENDER IDENTITY

	Male	Female
2019	48.8%	51.2%
2020	48.5%	51.5%

RACE/ETHNICITY

	Amer-Indian	Asian	Black	Hispanic	White	2 or More	Other
2019	0.2%	19.5%	3.1%	60.3%	15.1%	1.3%	0.2%
2020	0.2%	20.8%	3.3%	61.9%	12.2%	1.1%	0.3%

AGE

	18-29	30-39	40-49	50-59	60-69	70-79	80+
2019	23.4%	17.9%	18.0%	16.3%	12.6%	7.1%	4.6%
2020	23.7%	17.9%	17.9%	16.6%	12.5%	6.8%	4.5%

COMMUNITY ENGAGEMENT THEMES

BARRIERS RESIDENTS EXPERIENCE TO USING REGIONAL PARKS AND FACILITIES



HEAT

Heat and related pollution impacts make outdoor recreation activities difficult for many residents during warmer months of the year.



LACK OF SHADE

Without shade, many parks are unusable during hot months.



DISTANCE

Many park amenities are not available nearby.



LACK OF TRANSIT

Public transit to parks is limited and travel times are long. There are not many affordable options to reach amenities further away.



COST

Access fees and costs of transportation to facilities prevents many low-income families from getting to and enjoying parks.



TIME

Many residents do not have time, due to work or other reasons, to travel to and/or use regional parks and facilities.



LACK OF INFORMATION

Residents do not know where parks are located, what facilities are available or open, or how to reserve, use or get to amenities.



SAFETY

Concerns about unhoused people in parks, pandemic safety precautions along crowded trails, and safety for pedestrians on trails shared with bikes.



NOT FEELING WELCOME

Many people of color are concerned about feeling welcome and safe at parks and facilities.



LIMITED ADA AND SENIOR ACCESSIBILITY

Facilities are not accessible to disabled and older residents, many of whom do not have access to transportation to get to parks.



LACK OF CONNECTIVITY

Not enough trail networks or safe biking and pedestrian options.



NOT ENOUGH MAINTENANCE AT PARKS AND FACILITIES

Park areas and trails need repairs, maintenance and restoration.



LIMITED HOURS

Facilities are not open when people can use them, and pandemic restrictions have limited community use and events.



LACK OF OUTDOOR RECREATION AREAS

Including trails, pet-friendly areas, campsites and affordable water-based recreation.

“I would like to visit more hiking trails but it’s hard to find them, and information like hours, parking info, types of trails or activities.”

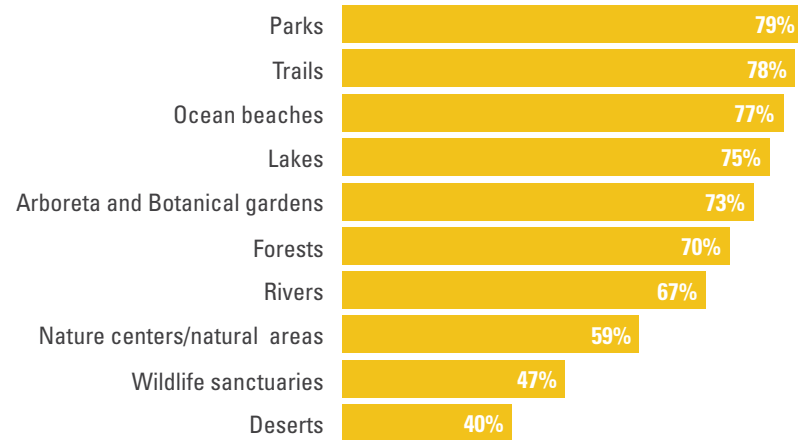
We have limited outdoor activity because of the heat.”

“Cost and lack of access to transportation prevents people from participating in the outdoor activities they would like to do.”

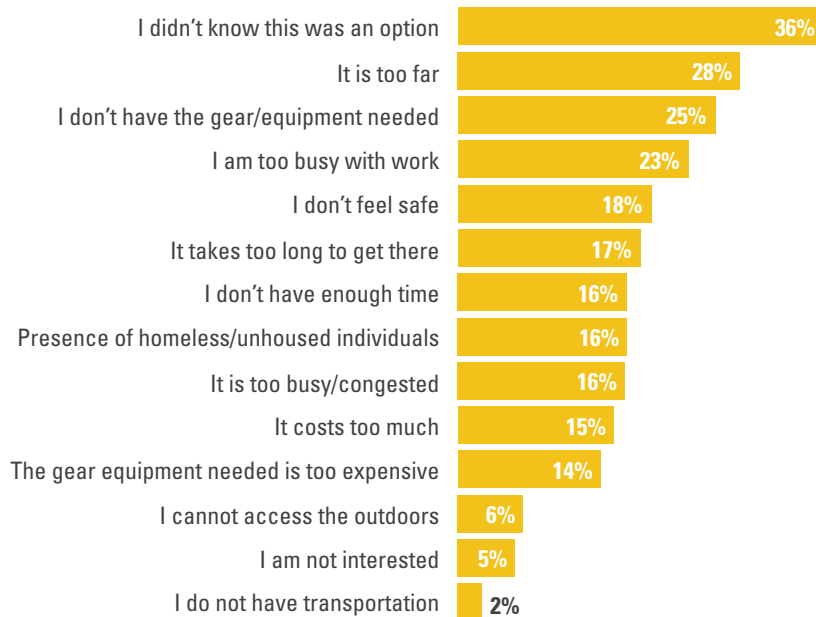
“It was really sad that during the pandemic open spaces like parks were closed - especially for families who don’t ... have a yard or outdoor space.”

► *Residents Regional Parks Use and Activities*

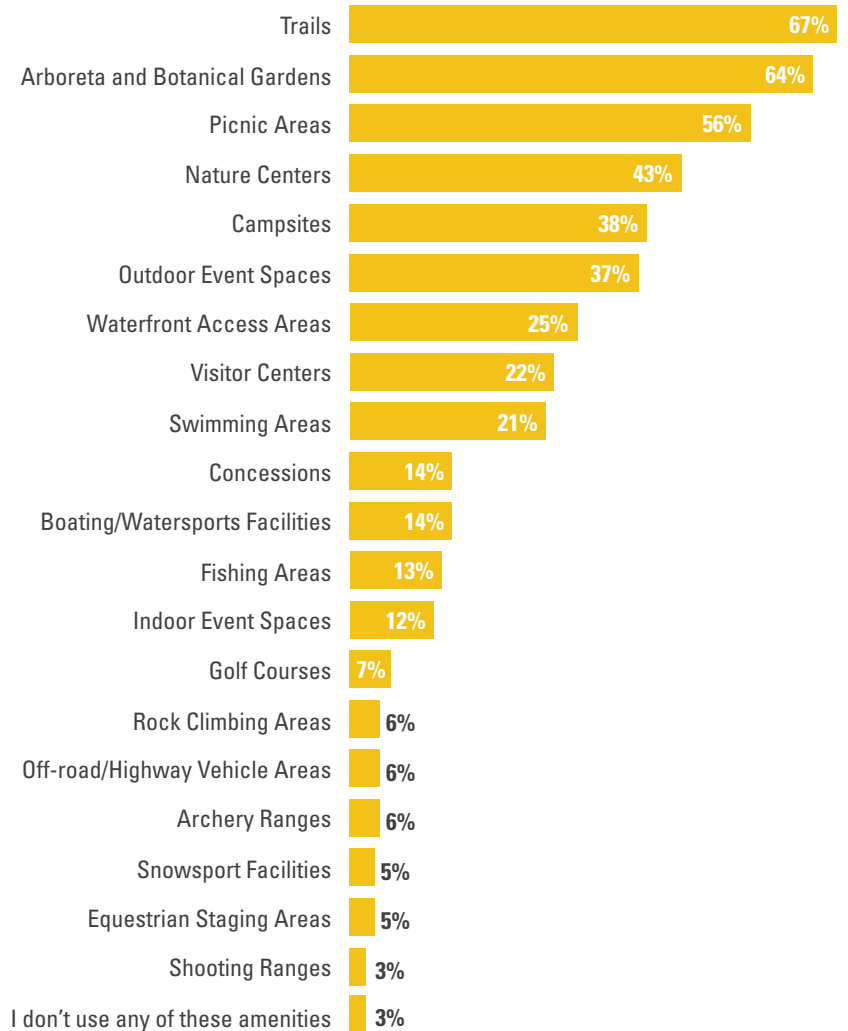
I visit these types of regional parks and facilities the most...



I can't go outside or to parks because...



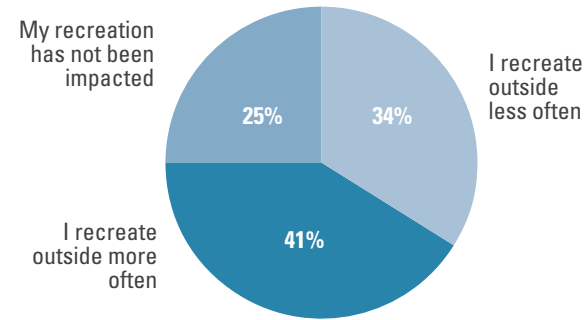
I use these regional park amenities most often:



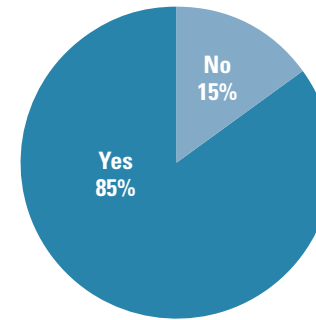
Appendix A | West San Gabriel Valley

► Covid-19 Impacts on Recreation for Residents in the West San Gabriel Valley Region

COVID has affected how I recreate...

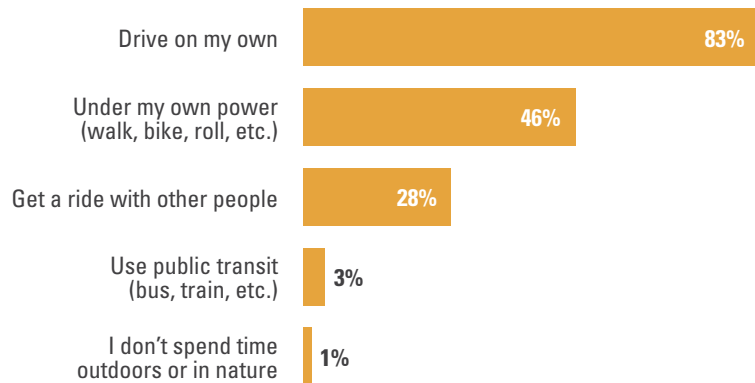


Because of COVID I am looking for recreation opportunities closer to home...

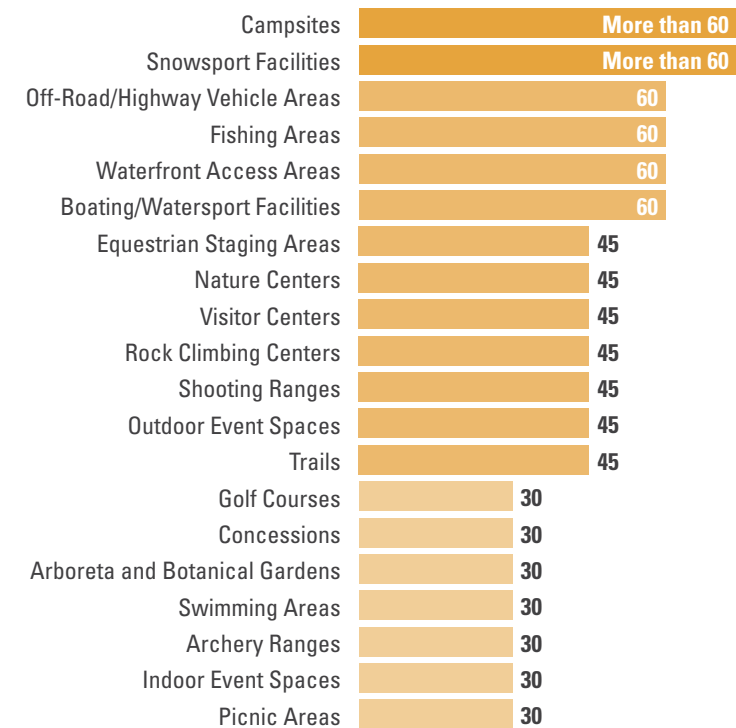


► Travel to Parks

When I travel to parks, these are all the ways I get there...

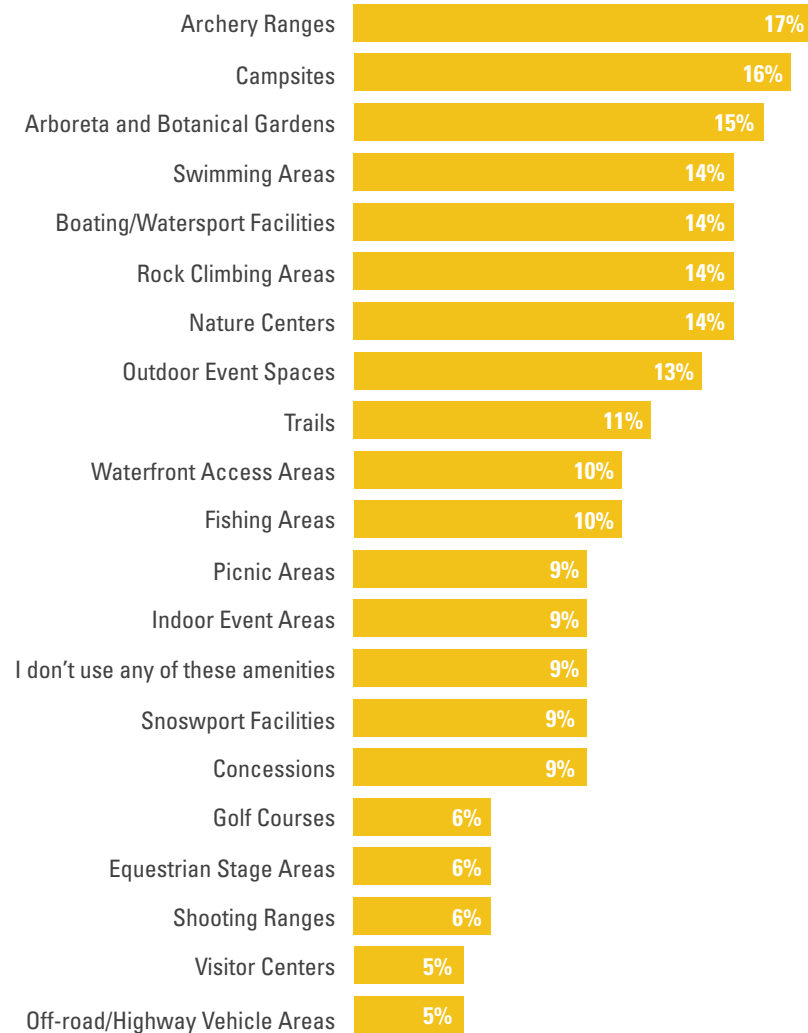


I'm willing to travel this many minutes to parks and amenities...



► *Regional Parks Needs in the West San Gabriel Valley Region*

The greatest parks needs in my community include...



► *Quality of Regional Park Amenities in the West San Gabriel Valley Region*

These amenities received the highest rate of good, fair or poor quality ratings from respondents...

Good

Arboreta and Botanical Gardens	79%
Trails	63%
Indoor Event Spaces	52%
Picnic Areas	51%
Nature Centers	51%

Fair

Off-Road/Highway Vehicle Areas	90%
Concessions	54%
Visitor Centers	53%
Golf Courses	50%
Campsites	48%

Poor

Rock Climbing Areas	50%
Snowsport Facilities	44%
Shooting Ranges	33%
Fishing Areas	27%
Swimming Areas	26%

COMMUNITY ENGAGEMENT THEMES

COMMUNITY SUGGESTIONS TO INCREASE AND IMPROVE VISITS TO REGIONAL PARKS AND FACILITIES



MORE SHADE

More shade structures and trees in gathering and playground spaces and along trails.



ACCESS TO WATER

Water fountains for users and animals in parks and along trails, more splash pads and water features for cooling off, better access to lakes, rivers and streams in the area.



TRANSIT OPTIONS

Provide free and more frequent transit, including direct bus routes and shuttles, to ski areas, the beach and parks.



ENHANCED SAFETY MEASURES

Provide more safety patrols and lighting and ensure visitors are adhering to social distancing and other protective measures during the pandemic.



ADDRESS HOMELESSNESS

Expand services to support unhoused people who use parks.



BETTER ACCESS TO INFORMATION

More and multilingual information and media about events at regional parks, locations, available amenities and opportunities to provide input.



IMPROVED SIGNAGE

Provide additional and interactive wayfinding, interpretive and multilingual signage in parks and along trails and ensure accessibility for users with limited vision.



ADA ACCESSIBILITY

Provide wheelchair and disabled accessible trails and facilities, including restrooms.



EXPAND NATIVE AMERICAN ACCESS AND EDUCATION

Provide access to ceremonial spaces for gatherings and events and provide spaces for indigenous-led education centers and activities.



EXPAND COMMUNITY EVENTS

More outdoor theater, music, arts and community events and installations in parks.



IMPROVED MAINTENANCE AND INFRASTRUCTURE

Clean and maintain restrooms, trails, waterways and campsites, provide more picnic tables and seating.



ADDITIONAL STAFF

Hire more park guides and maintenance staff to take care of trails and park infrastructure.



BETTER ACCESS TO PROGRAMS

Improve and standardize the online reservation system, allow for community-led recreation classes, and provide affordable equipment and classes for all ages, especially youth and seniors.



MORE RECREATION FACILITIES

Extend facilities hours, provide more outdoor equipment and community gathering spaces, and build additional parks, courts, swimming facilities, and places for dogs to run.



EXPAND CONCESSIONS

Allow local food vendors and set up more hydration locations in parks and facilities.



PROVIDE FREE ENTRY TO FACILITIES

Organize free days for LA County residents at sites with entry fees.

EXPAND TRAILS AND ACCESS

Provide more pedestrian, biking and equestrian trails near other facilities and activities, and provide dedicated trails to mitigate bike rider and hiker user conflicts.



ENHANCE CONNECTIVITY

Provide greenways and trail networks that connect communities, parks, trails and the watershed, and provide safe transportation corridors for bicyclists, equestrians and pedestrians.



EXPAND AND PRESERVE GREENSPACE

More trees, pocket parks, native habitat areas, learning gardens, and natural open spaces.



ENHANCE PRESERVATION AND STEWARDSHIP

Organize stewardship and restoration activities at parks and along the LA River.



PARTNERSHIPS WITH COMMUNITY ORGANIZATIONS AND SCHOOLS

Expand park use and greenspace access through community and school partnerships and make it easier for groups to register and use parks and facilities.

“Please make sure the native plants, oaks and sycamores are replaced when they die from age or the drought. I do not see old trees replaced by young trees. This is so important for the future of our parks.”

“We actually need trail stewardship and management by community groups to work together to reduce user conflict.”

“It would be wonderful to have more signage, especially for trails that are over 2 miles. I went to Vasquez Trails last weekend, and I was scared of not knowing where to go.”

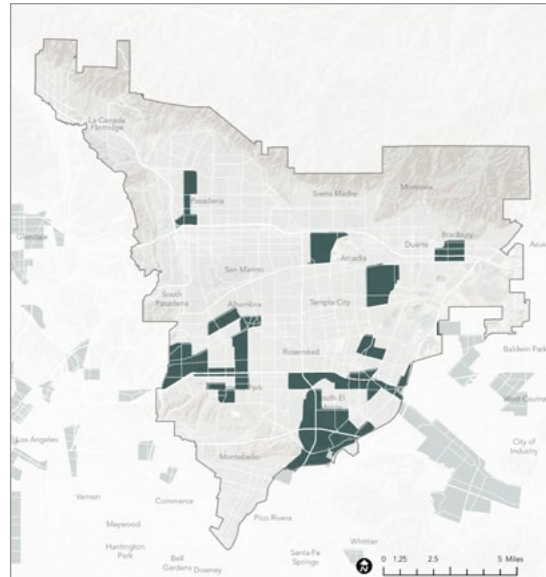
“Arroyo Seco connectivity has so much potential from the mountains to DTLA.”

“I have participants in my health class that long for a trail or walking area with soft surface.”

“Outdoor space have been a life-saver for our family during the pandemic. I helps us teach kids to enjoy the outdoors and also to understand nature, the importance of nature and the impact of global warming. So it is both good for their health and it teaches them to be stewards of the environment.”

REGIONAL RECREATION PRIORITY ANALYSIS

Areas Experiencing the Highest Levels of Barriers and Vulnerability



- Legend**
- Areas of Moderate to High Vulnerability Across All Four Dimensions
 - West San Gabriel Valley Study Area
 - Los Angeles County
 - Major Roads



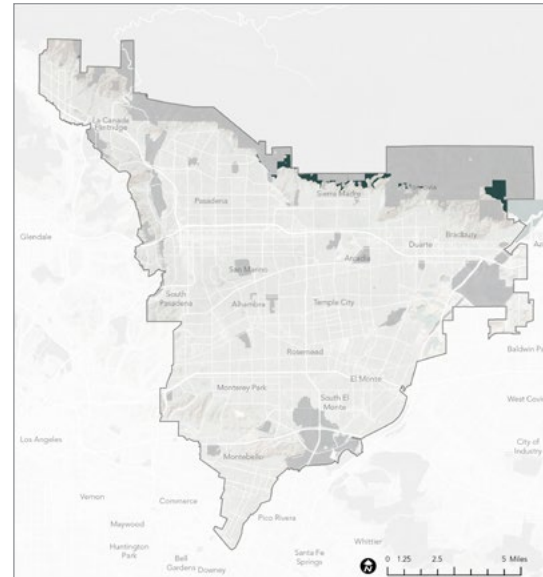
High Levels of Social and Transportation Barriers



High Levels of Health and Environmental Vulnerability

Map source: HPI, 2021; 2021 RRE Inventory

Areas Located in Low Proximity to Regional Recreation Sites



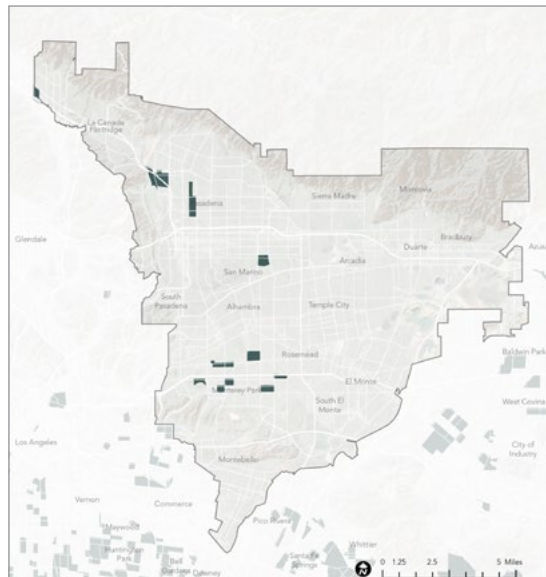
- Legend**
- Areas in Low Proximity to Regional Recreation Facilities (beyond a 2.5-mile bicycle ride to any Regional Recreation Park Entry Points, Nature-Based Recreation Area Entry Points or Trailheads and Access Points)
 - Regional Site Inventory
 - West San Gabriel Valley Study Area
 - Los Angeles County
 - Major Roads



Low Proximity to Regional Recreation Sites

Map source: ArcGIS StreetMap Premium, 2021; 2021 RRE Inventory

Areas With Low Visitorship Rates to Regional Recreation Sites



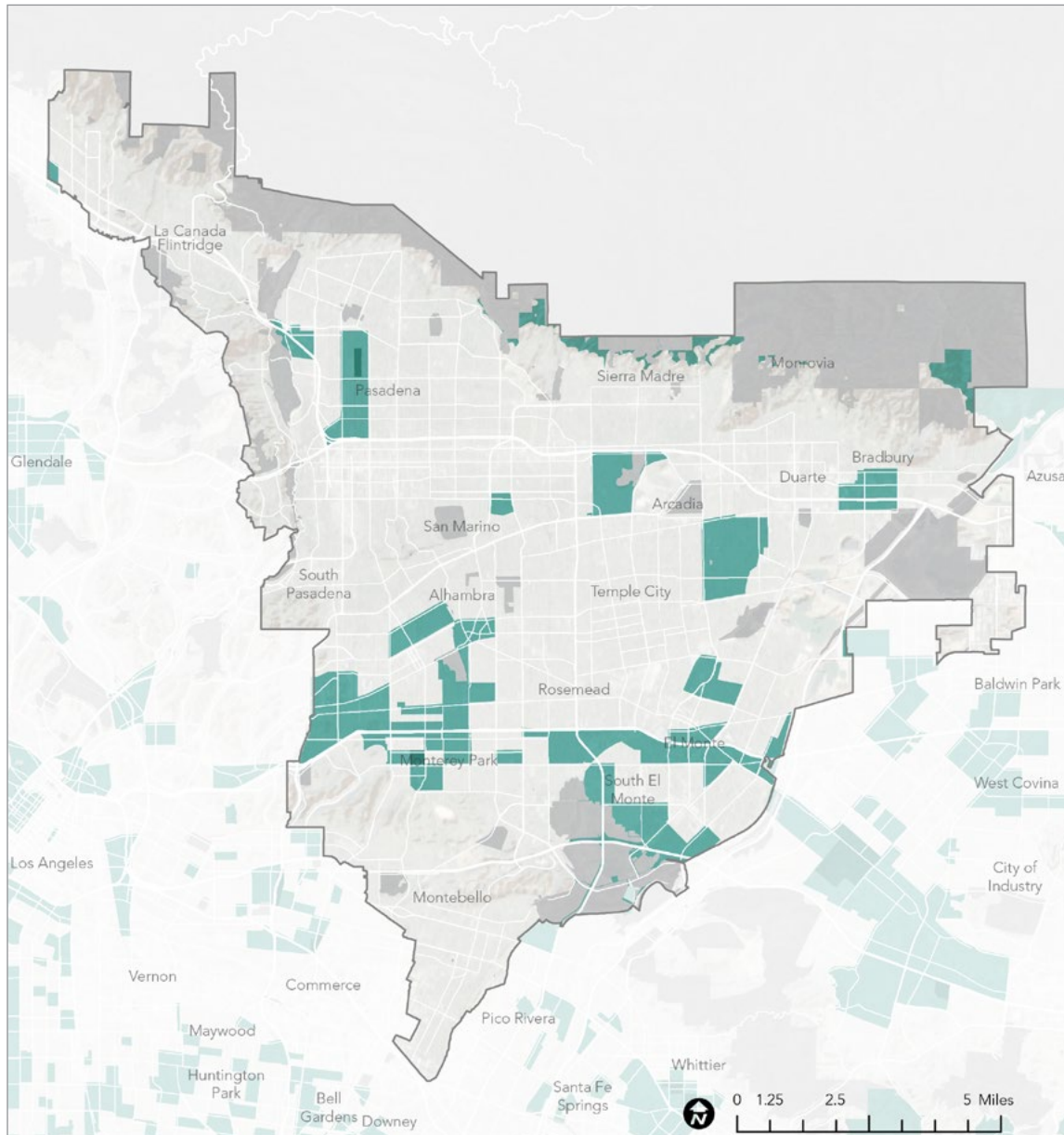
- Legend**
- Areas with Low Visitorship Rates (less than one observed visit per resident over the two-year period)
 - West San Gabriel Valley Study Area
 - Los Angeles County
 - Major Roads



Low Visitorship Rates to Regional Recreation Sites

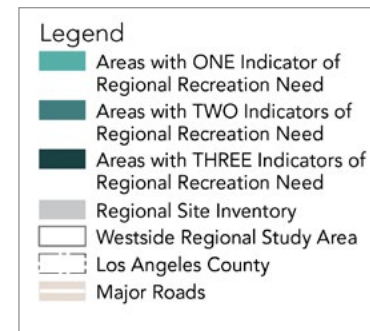
Map source: Unacast, 2021; 2021 RRE Inventory

REGIONAL RECREATION PRIORITY AREAS



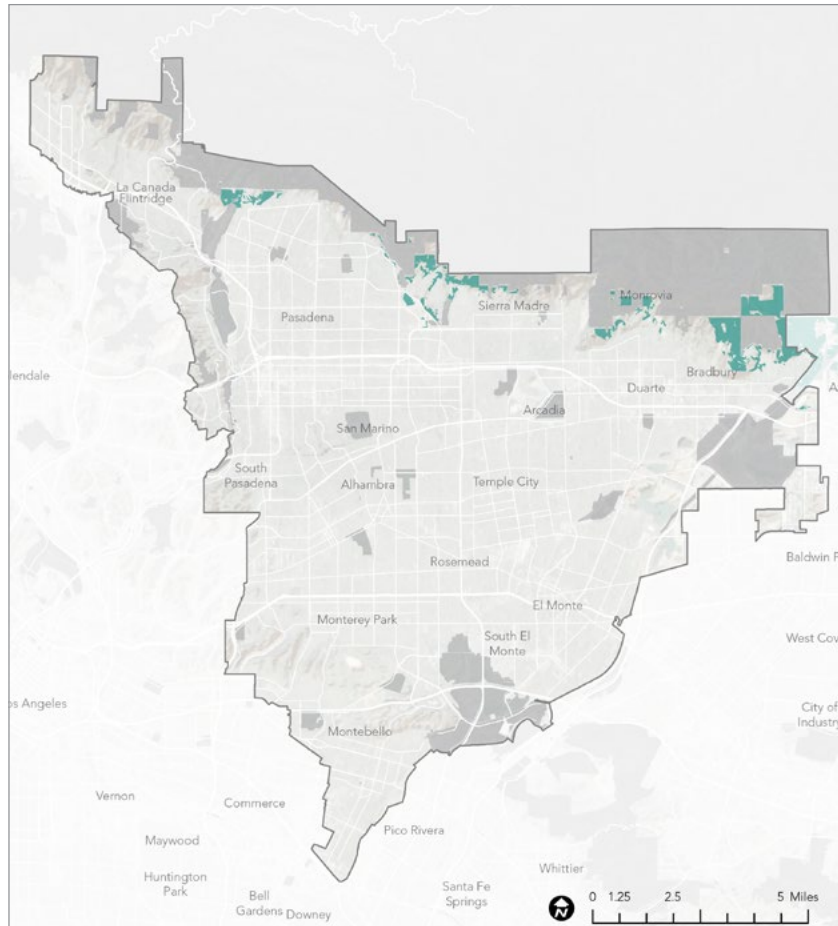
Map source: HPI, 2021; Unacast, 2021; ArcGIS StreetMap Premium, 2021; 2021 RRE Inventory

Areas with:

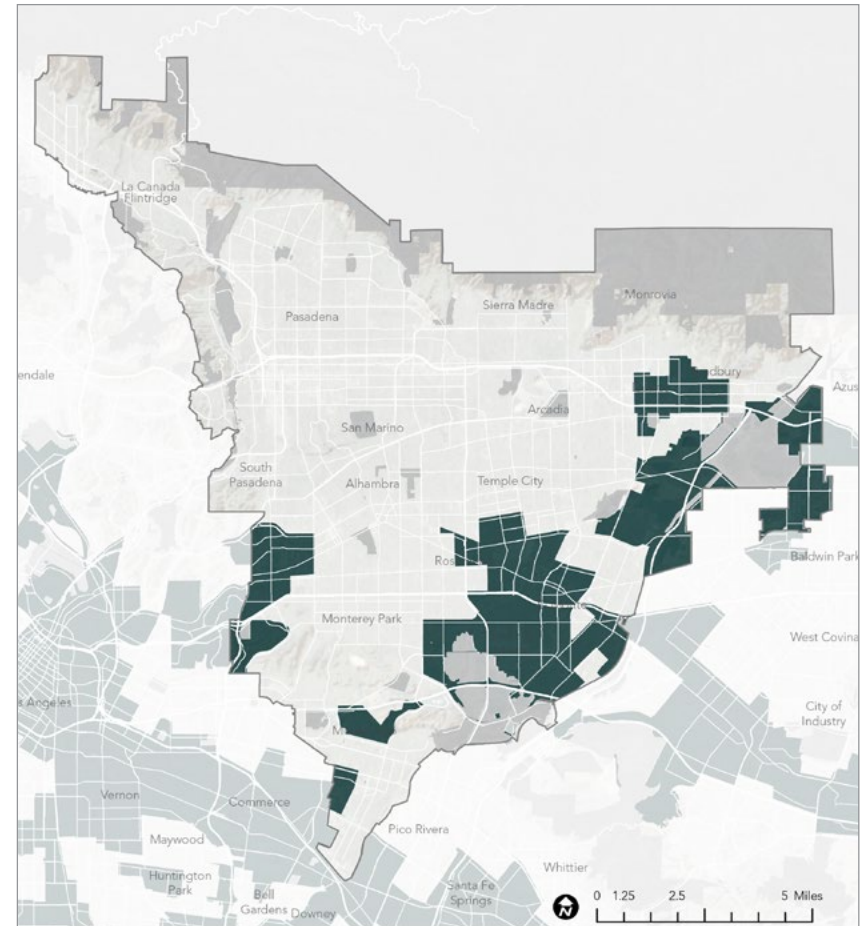


ENVIRONMENTAL CONSERVATION AND RESTORATION PRIORITY AREAS

Priority Areas for Conservation



Priority Areas for Restoration



Maps source: CDFW ACE, 2021; USGS, 2021; COEHHA, 2021; CalFire FRAP 2015