

we all need



PNA+

# APPENDIX A

# REGIONAL STUDY

# AREA PROFILES

This project was previously called the Regional and Rural Edition (RRE) to emphasize its focus on regional and rural recreation needs and priorities. This project name was used during the data collection, and community engagement and outreach phases which occurred primarily in 2021. As this report was being completed in 2022, DPR decided to rename the project the Parks Needs Assessment Plus (PNA+) to clarify and better communicate that this project complements and offers new information not previously included in the 2016 Parks Needs Assessment (PNA), such as mapping and analyses related to population vulnerability, environmental benefits, environmental burdens, and priority areas for environmental conservation, environmental restoration, regional recreation, and rural recreation. (Please note that there remains some text and graphic references to the RRE in this document because that was the project name when some components of this study were completed.)

# GATEWAY REGIONAL STUDY AREA PROFILE

## STUDY AREA ID #10

- » Study Area Description
- » Study Area Demographics
- » Population Vulnerability
- » Regional Site Inventory
- » Environmental Benefits
- » Environmental Burdens
- » Regional Recreation Parks
- » Regional Recreation Park Access
- » Nature-Based Recreation Areas
- » Nature-Based Recreation Area Access
- » Nature-Based Recreation Amenities
- » Regional Trails
- » Regional Trail Access
- » Regional Site Visitorship
- » Community Engagement Themes
- » Regional Recreation Priorities
- » Environmental Conservation and Restoration Priorities

### Note

This profile is not intended to stand alone. For definitions of key terms and a full description of the analysis summarized within please refer to Chapters 3 and 4 of the main report as well as Appendix C: Technical Resources.



## STUDY AREA DESCRIPTION

### LOCATION

The Gateway Study Area is located in the southeastern portion of Los Angeles County. The eastern border of the study area is the Orange County line. The study area includes the cities of Artesia, Bell, Bell Gardens, Bellflower, Cerritos, Commerce, Cudahy, Downey, Hawaiian Gardens, Huntington Park, La Habra Heights, La Mirada, Lakewood, Long Beach, Lynwood, Maywood, Norwalk, Paramount, Pico Rivera, Santa Fe Springs, Signal Hill, South Gate, Vernon, and Whittier. Unincorporated areas located within the study area include Rancho Dominguez, North, South and West Whittier, Sunshine Acres, Los Nietos, Cerritos (islands), Long Beach (islands) and Lynwood (islands). The area has also a large corridor of industrial areas that lead out of the ports of Los Angeles and Long Beach into downtown Los Angeles.

### GEOGRAPHY

The study area is accessible by several key freeways and regional arterials and is alongside the terminus of two major rivers: the Los Angeles and San Gabriel Rivers. The study area is also home to world and regional-serving facilities, including the Port of Long Beach, Long Beach Airport, community and trade colleges and California State University Long Beach, energy production facilities, shoreline, cultural attractions and major healthcare facilities. The study area is relatively built out and has a large percentage of industrial land. There is limited topography except that associated with the Puente Hills area.

### STUDY AREA ISSUES

Industrial uses and trade and logistics from the ports are an important part of the economy of study area; however, the concentration of industrial uses and high truck traffic has resulted in air and water pollution. As a large economic center with high-wage jobs, it is important to balance environmental and economic concerns in the study area. The Gateway Cities Councils of Government has identified initiatives to address challenges related to job creation, housing affordability and homelessness, transportation, air and water quality and climate resilience.

In certain communities, there is also a lack of multifamily housing opportunities and the need for revitalization. Natural hazards also present challenges for communities in the study area, as a large percentage of the region is located within a flood hazard zone and coastal areas are susceptible to impacts from future sea level rise. The majority of the study area is also subject to seismic and geotechnical hazards associated with liquefaction.

### PARK AND RECREATION RELATED ISSUES

- » Several communities in the Gateway Study Area were identified as having Very High Park Need based on the 2016 Countywide Parks Needs Assessment. These study areas include: the City of Long Beach-West and the cities of Paramount, Bellflower, South Gate, Bell Gardens, Cudahy, Bell, Huntington Park and Maywood.
- » The study area has a limited number of trails. The improvement of storm channels, creeks, and rivers, especially the Los Angeles River, presents tremendous opportunities for the creation of new parks, trails, and open space.

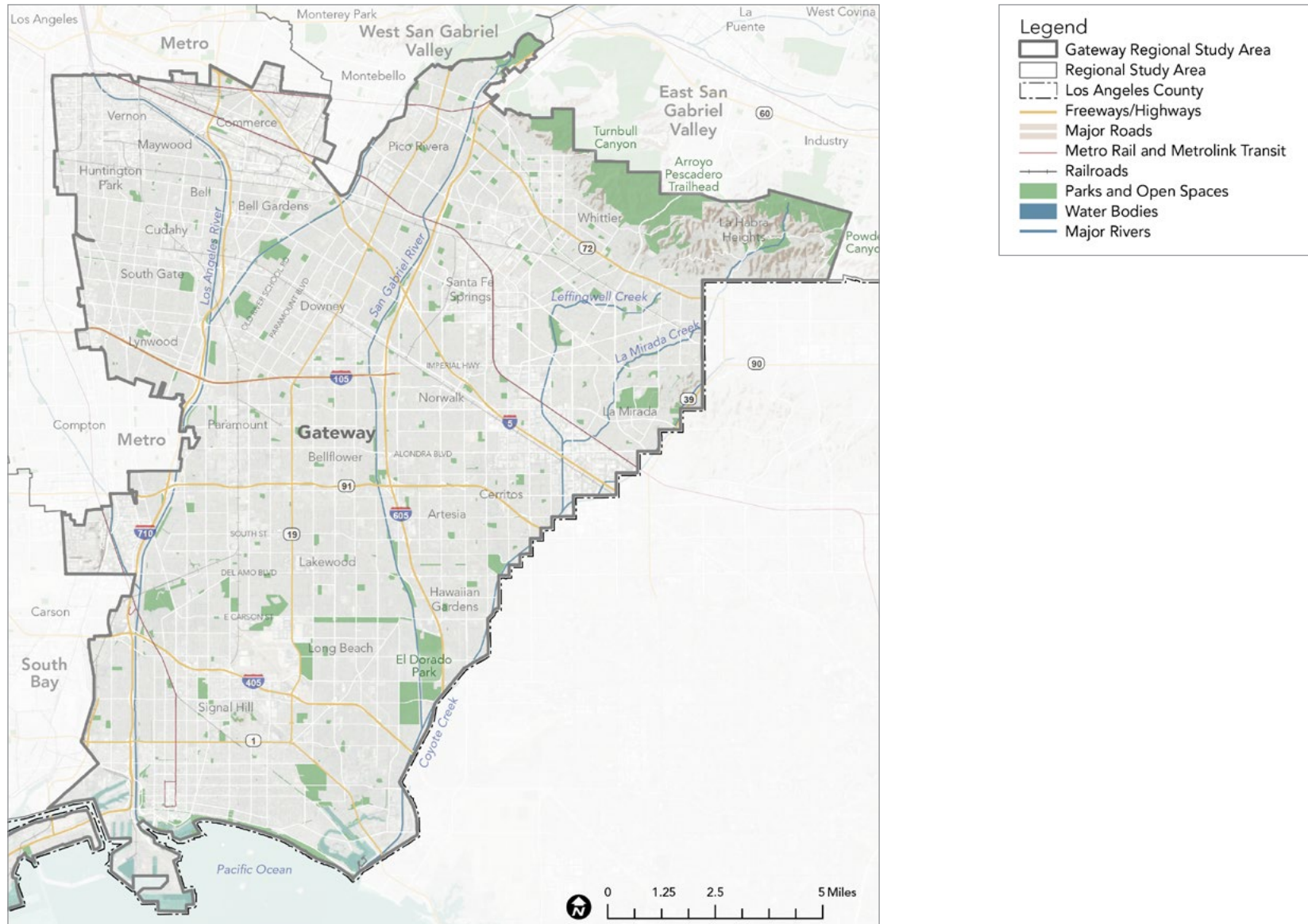
## ANALYSIS FINDINGS

- » The area has a concentration of vulnerable populations in portions of Long Beach, Bellflower, and Whittier.
- » The area's regional recreation facilities and trails are relatively well served by public transportation due to an extensive transit network.
- » The highest rates of visitorship are found near El Dorado East Regional Park, Heartwell Park, and the coast of Long Beach.
- » High Regional Recreation Need is distributed throughout the study area primarily due to the low visitorship rates to regional recreation sites.
- » A few areas along the San Gabriel River and Los Cerritos Channel in Long Beach have been identified as priority areas for conservation.
- » Several areas, including Santa Fe Springs, Vernon, and South Gate, have been identified as priority areas for restoration due to their relatively poor environmental health.
- » The study area only has 0.08 miles of regional trails per 1,000 residents, which is significantly below the countywide average of 0.33.

## COMMUNITY ENGAGEMENT THEMES

- » Overcrowding, safety, lack of information, cost, parking and maintenance are identified as barriers to park use for residents who live in the study area.
- » Residents say they need more campsites and arboreta, access to transit and parking, better information and signage, expanded and affordable programming and facilities, and more funding and attention to infrastructure and facilities maintenance.
- » 45% of survey respondents say they are recreating outside less often due of the pandemic. 85% are looking for more recreation activities closer to home because of COVID.

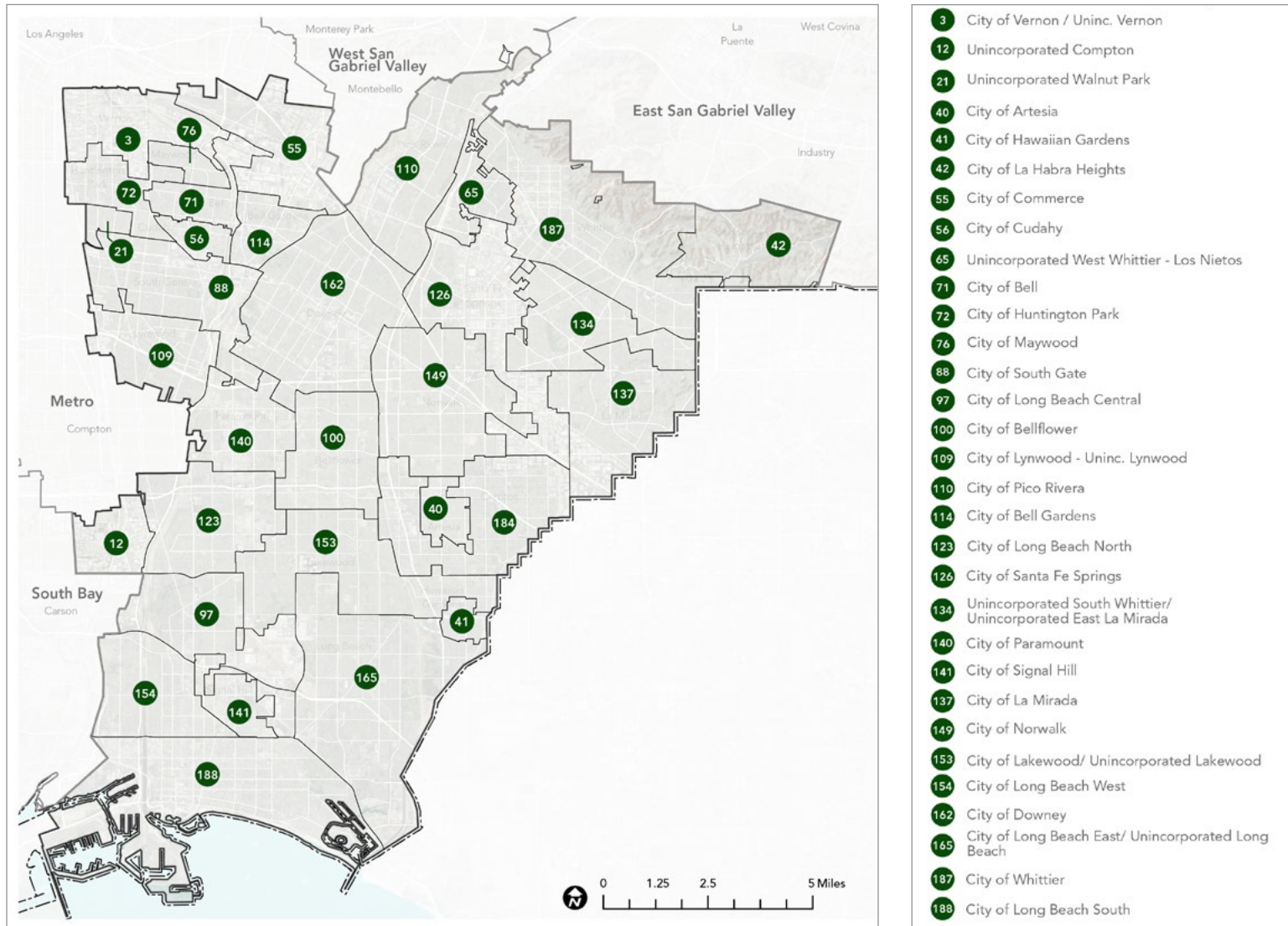
# GATEWAY REGIONAL STUDY AREA



Map source: US Census, 2019; Esri, 2021; MIG, 2021; LAC GIS, 2021; USGS NHD, 2021  
 Note: All Regional Study Profile maps in this chapter include and refer to the sources listed here as basemap layers.

## PNA STUDY AREAS LOCATED WITHIN REGIONAL STUDY AREA

This map shows the relationship of Regional Study Area to the boundaries of the study areas that were analyzed in the 2016 PNA.



Map source: PNA, 2016

# STUDY AREA DEMOGRAPHICS

## Population, Race, Ethnicity, Gender, Income, Age, and Education Level

Population	
<b>Total</b>	<b>1,666,588</b>

Race	Percentage
White	53.9%
Black or African American	6.9%
American Indian and Alaska Native	0.68%
Asian	10.1%
Native Hawaiian and Other Pacific Islander	0.47%
Some Other Race	24.0%
Two or More Races	3.9%
<b>Total</b>	<b>100%</b>

Ethnicity	Percentage
Hispanic or Latino	63.3%
Not Hispanic or Latino	36.7%
<b>Total</b>	<b>100%</b>

Income	Percentage
Less than \$25,000	22.8%
\$25,000-\$49,999	25.4%
\$50,000-\$74,999	18.2%
\$75,000-\$99,999	12.4%
\$100,000-\$150,000	13.3%
\$150,000+	7.9%
<b>Total</b>	<b>100%</b>

Gender	Percentage
Male	49.2%
Female	50.8%
<b>Total</b>	<b>100%</b>

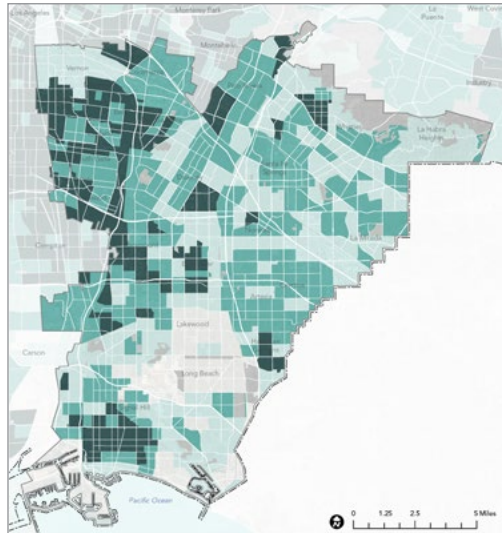
Age	Percentage
Under 5 years	7.1%
5 to 9 years	6.9%
10 to 14 years	7.2%
15 to 19 years	8.1%
20 to 29 years	15.6%
30 to 39 years	13.8%
40 to 49 years	14.0%
50 to 59 years	12.1%
60 to 69 years	8.2%
70 to 79 years	4.1%
80+ years	2.8%
<b>Total</b>	<b>100%</b>

Education Level	Percentage
Less than 9th Grade	17.5%
9th-12th grade	13.0%
HS Grad	23.0%
Some college, no degree	21.2%
Associates	7.1%
Bachelors	12.4%
Graduate or professional degree	5.8%
<b>Total</b>	<b>100%</b>

Source: Planning Area Framework, The Los Angeles County General Plan 2035.  
 2014 ACS 5-Year Estimate Subject t=Tables (<https://data.census.gov/cedsci/table?q=United%20States&g=0500000US06037%241400000&d=ACS%205-Year%20Estimates%20Subject%20Tables>)  
 Note: At the time that this report was prepared, 2020 Census results were not available.

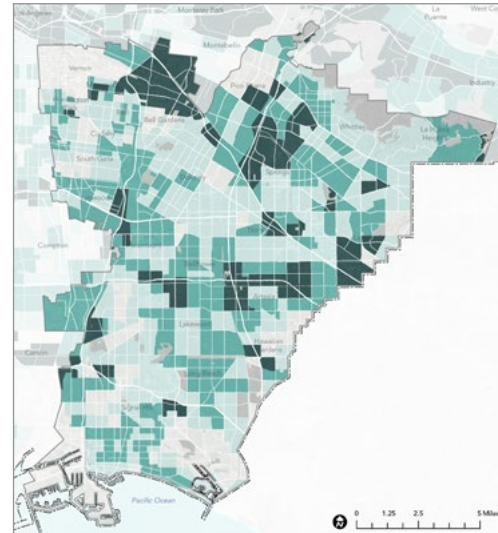
# POPULATION VULNERABILITY DIMENSIONS

## Social Barriers Dimension



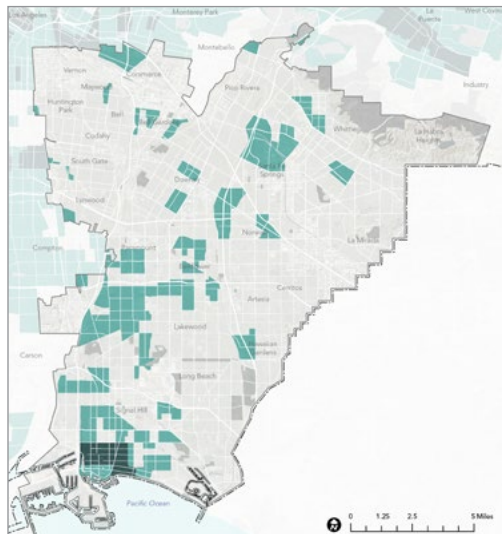
- Indicators:
- » High Poverty Rate
  - » High Unemployment Rate
  - » Majority-Minority Population
  - » High % of Young Children
  - » High % of Elderly Residents
  - » High % of Non-English-Speaking Residents
  - » Low % of Two-Parent Households

## Transportation Barriers Dimension



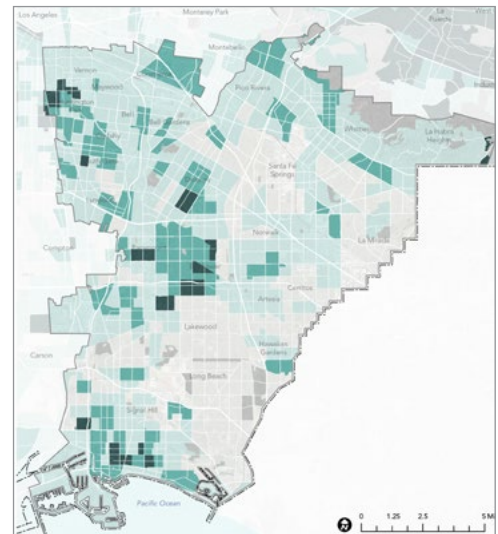
- Indicators:
- » Low Automobile Access
  - » Low Public Transit Access
  - » Low Active Commuting Rate
  - » High Traffic Density
  - » High Pedestrian Injuries

## Health Vulnerability Dimension



- Indicators:
- » Low Park Access
  - » Low Tree Canopy
  - » High % Impervious Surface
  - » High Number of Excessive Heat Days
  - » High Urban Heat Island Index Score

## Environmental Vulnerability Dimension



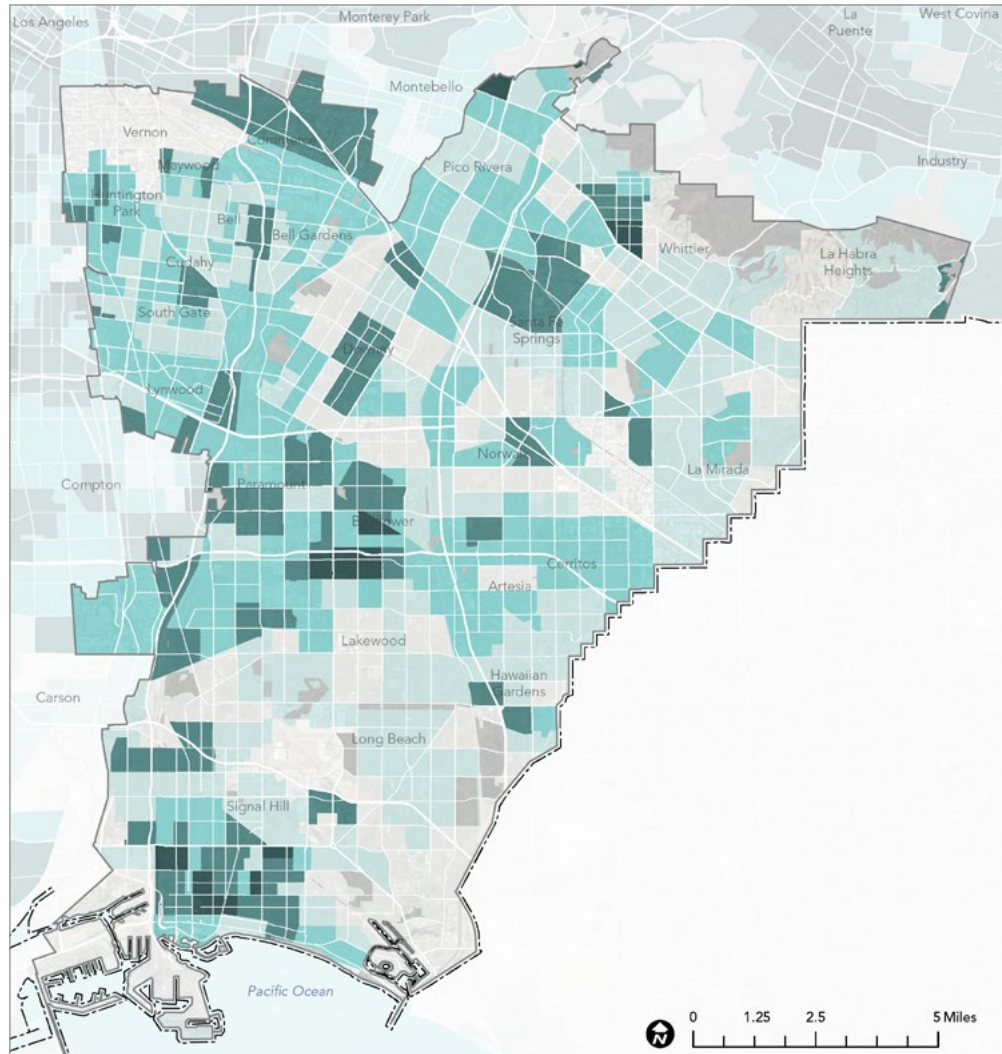
- Indicators:
- » Reduced Life Expectancy at Birth
  - » High Pollution Levels



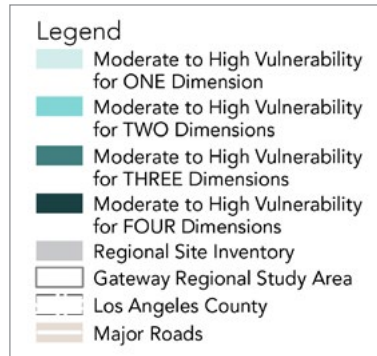
Maps source: HPI, 2021; 2021 RRE Inventory




# COMPOSITE POPULATION VULNERABILITY



Map source: HPI, 2021; 2021 RRE Inventory




**Dimensions of Population Vulnerability**

**Social Barriers Dimension:** 

Prevalence of:

- » Young Children
- » Elderly
- » Non-English Speaking Residents
- » Single Parent Households
- » Poverty
- » Unemployment
- » Majority-Minority Population

**Transportation Barriers Dimension:** 

- » Limited Active Commuting
- » Limited Automobile Access
- » Limited Public Transit Access
- » High Traffic Density
- » High Pedestrian Injuries

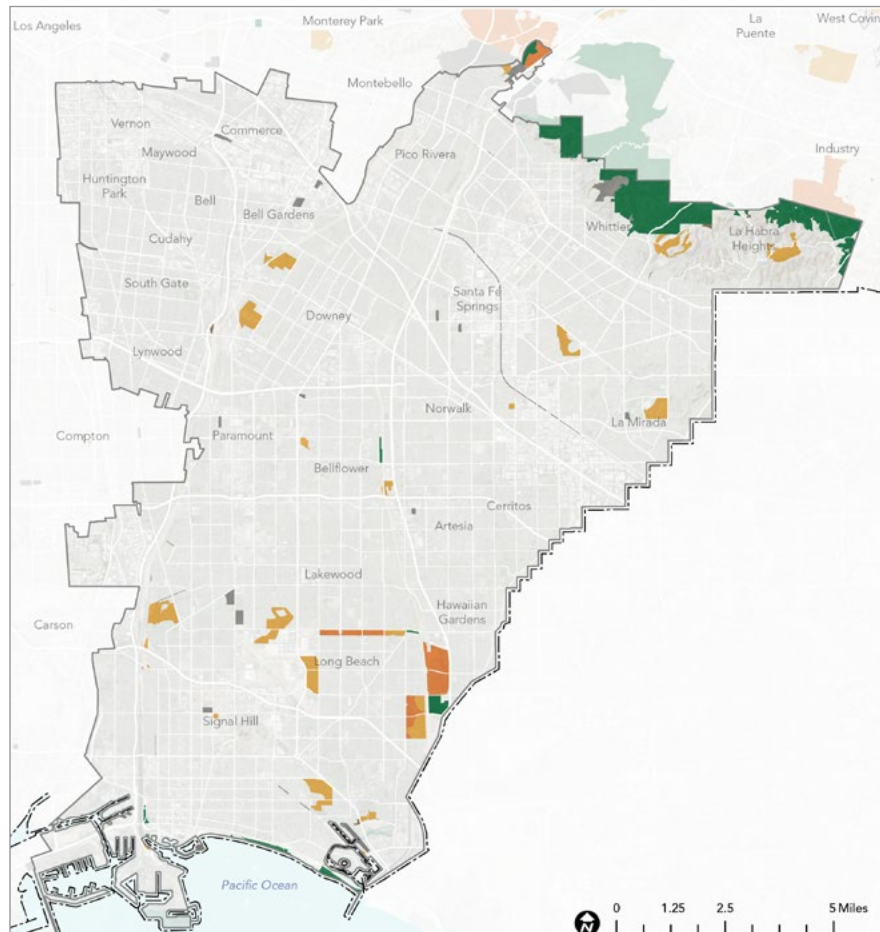
**Health Vulnerability Dimension:** 

- » Reduced Life Expectancy at Birth
- » High Pollution Levels

**Environmental Vulnerability Dimension:** 

- » Limited Park Access
- » Limited Tree Canopy
- » High % of Impervious Surface
- » High Excessive Heat Days
- » High Urban Heat Island Index Score

# REGIONAL SITE INVENTORY

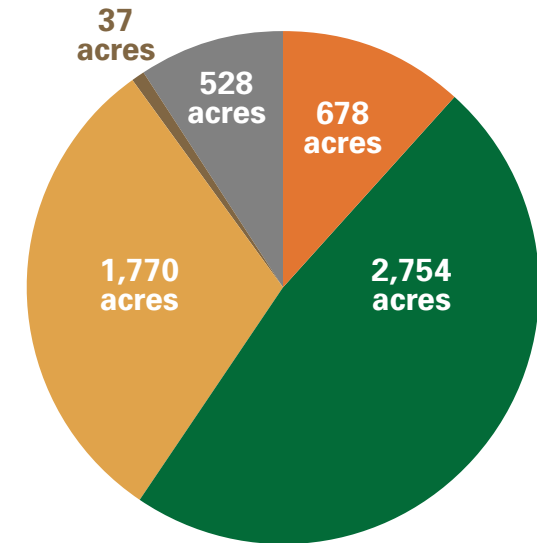


Map source: 2021 RRE Inventory

**5,767**  
TOTAL ACRES  
OF REGIONAL  
FACILITIES

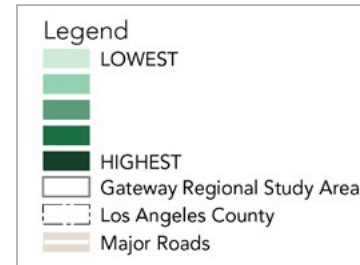
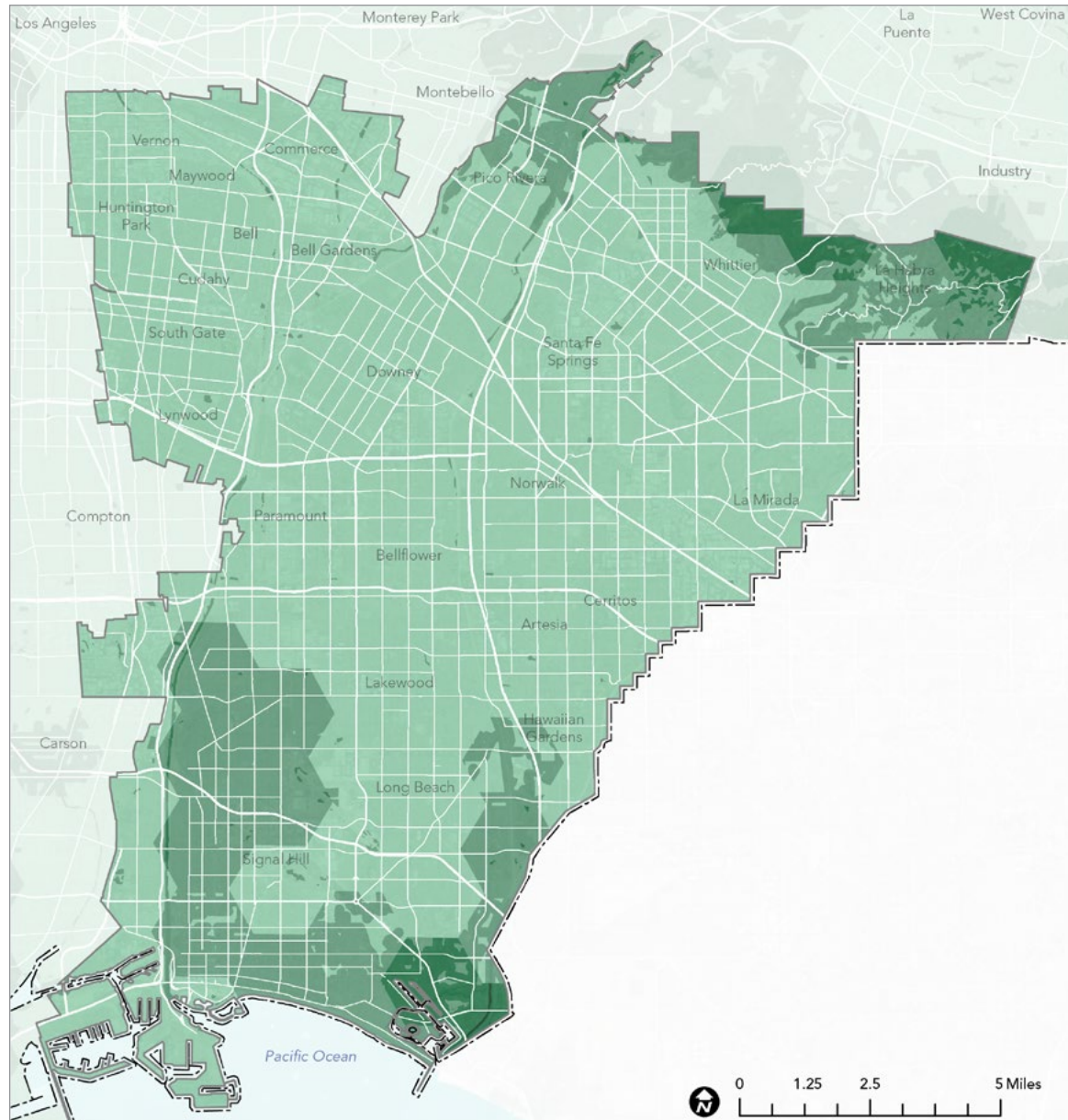
**4%**  
OF THE TOTAL  
LAND AREA  
IS REGIONAL  
FACILITY LAND

**3**  
ACRES OF  
REGIONAL  
FACILITY LAND  
PER 1,000  
RESIDENTS



- REGIONAL RECREATION PARKS
- NATURE-BASED RECREATION AREAS
- REGIONAL SPECIALIZED RECREATION AREAS
- CONSERVATION AREAS
- OTHER PUBLIC AND SEMI-PUBLIC OPEN SPACE

# ENVIRONMENTAL BENEFITS



## INDICATORS

**Species Diversity.** Species diversity data represent a count of the number of different species for amphibians, aquatic macroinvertebrates, birds, fish, mammals, plants, and reptiles.

**Significant Habitat.** Significant habitat values represent terrestrial habitats or vegetation types that are the focus of state, national, or locally legislated conservation laws, as well as key habitat areas that are essential to the survival and reproduction of focal wildlife species.

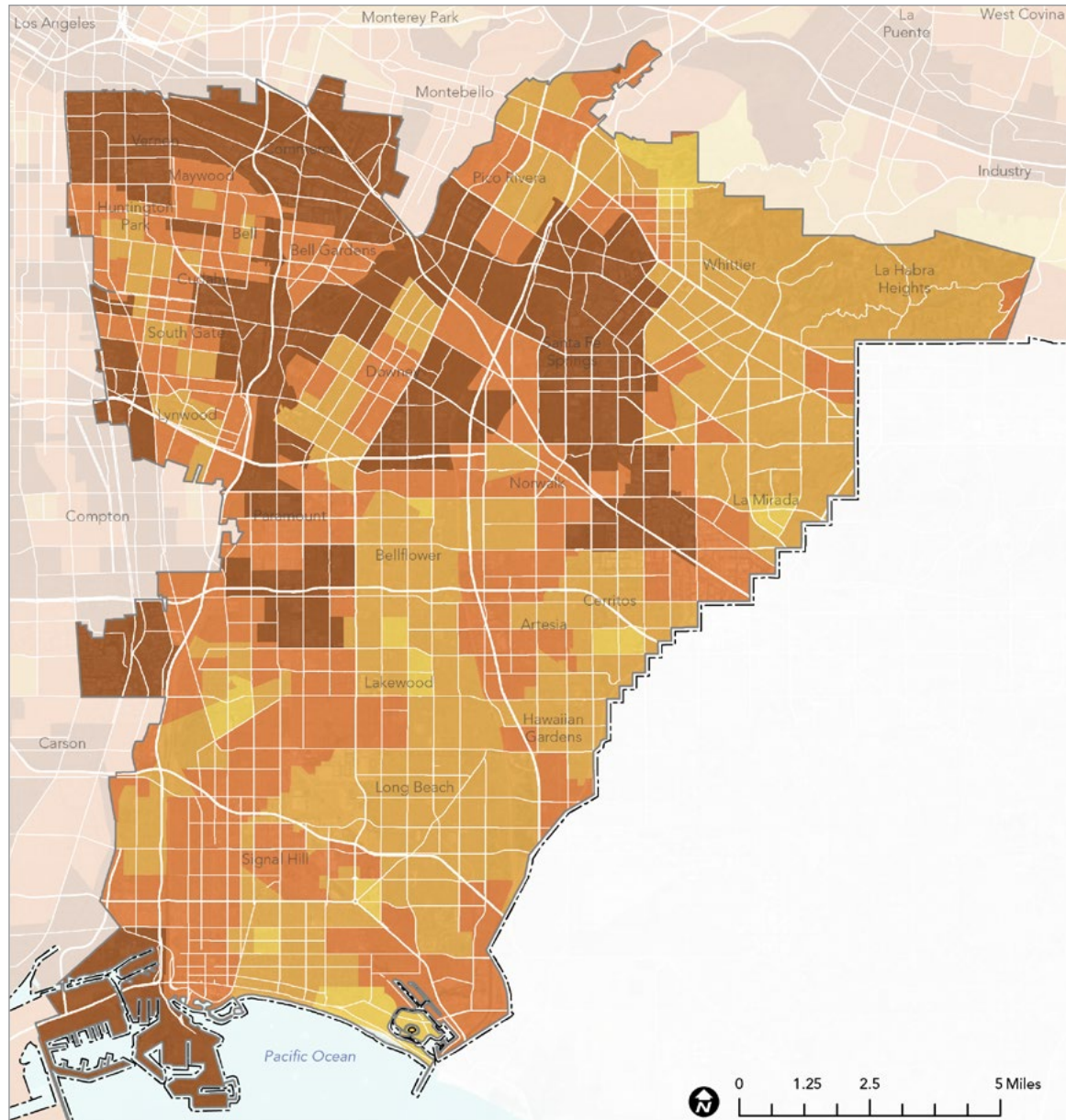
**Habitat Connectivity.** Habitat connectivity values summarize information on the presence of mapped terrestrial corridors or linkages and juxtaposition to large, contiguous, natural areas.

**Proximity to Waterbody.** Proximity to waterbody represents the distance to a water drainage network of the US. Proximity was categorized as less than 0.1 mile (highest benefit), 0.1 to 0.25 mile, 0.25 to 0.5 mile, 0.5 -1.0 mile, or greater than 1.0 mile (lowest benefit).

**Habitat Type.** Habitat types are divided into natural vegetation (high score), agriculture/barren/other (low score), and urban (lowest score).

Map source: CDFW ACE, 2021; USGS, 2021; COEHHA, 2021; CalFire FRAP 2015

# ENVIRONMENTAL BURDENS



Map source: CDFW ACE, 2021; USGS, 2021; COEHHA, 2021; CalFire FRAP 2015



## INDICATORS

**Groundwater Threat.** Groundwater threats come from many sources, including storage and disposal of hazardous materials on land and in underground storage tanks, dairy farms, concentrated animal-feeding operations, and water ponds generated for oil and gas development also pose threats to groundwater reserves.

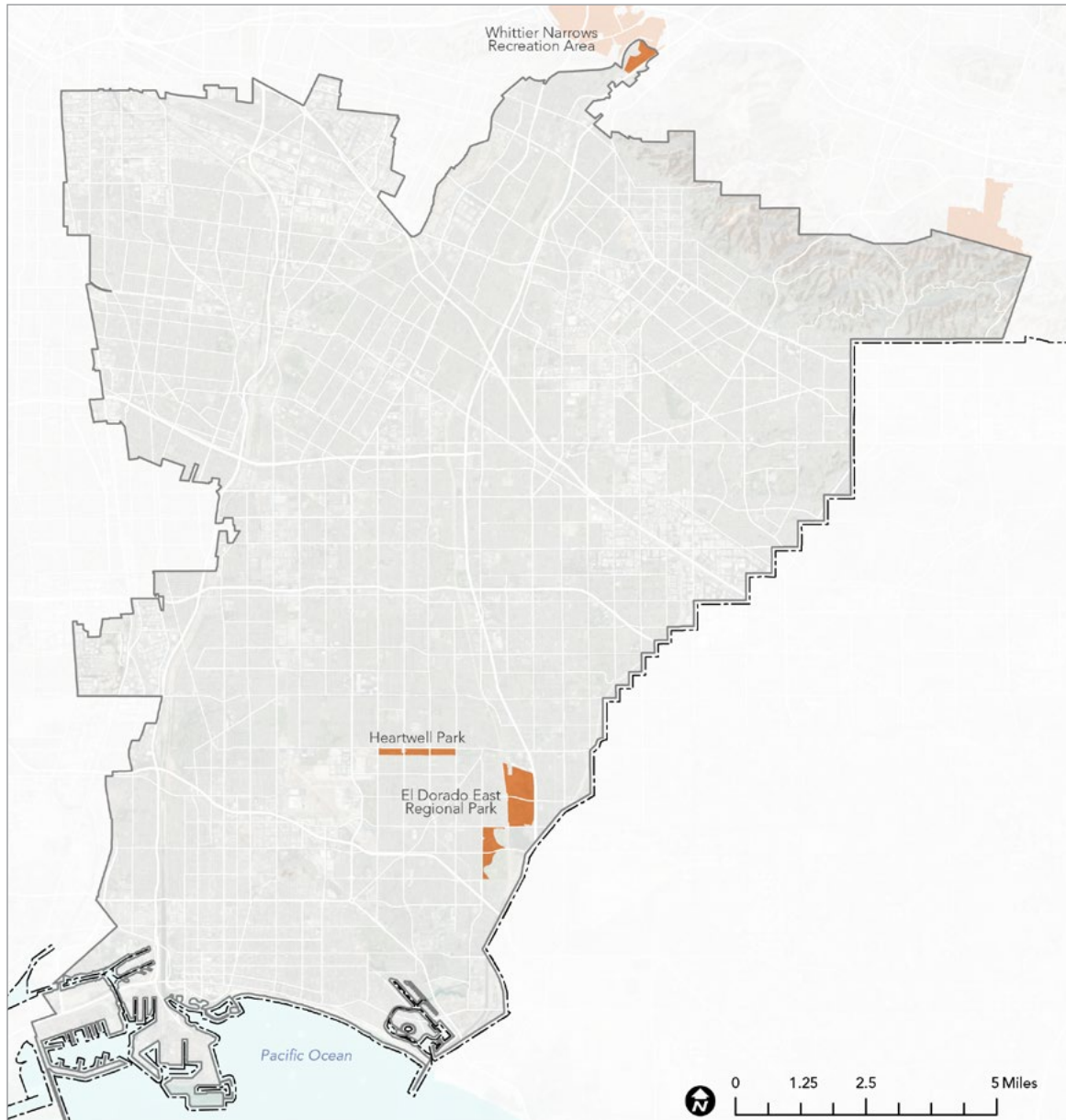
**Hazardous Waste.** Hazardous waste facilities and generators pose widespread concerns for both human health and the environment from sites that serve to process or dispose of hazardous waste.

**Drinking Water.** Drinking water contaminants are introduced into drinking water sources in many ways, including natural occurrence, accidental discharge, industrial release, agricultural runoff and certain water disinfection methods.

**PM2.5.** Fine particulate matter (PM) that measures 2.5 microns or less in width represents a major contributor to air pollution and has been shown to cause significant adverse health effects, including heart and lung disease.

**Pollution Burden.** Pollution burden is composite indicator derived from seven exposure indicators (ozone and PM2.5 concentrations, diesel PM emissions, drinking water contaminants, children’s lead risk from housing, pesticide use, toxic releases from facilities, and traffic density) and five environmental effects indicators (cleanup sites, impaired water bodies, groundwater threats, hazardous waste facilities and generators, and solid waste sites and facilities).

# REGIONAL RECREATION PARKS



Map source: 2021 RRE Inventory

**Legend**

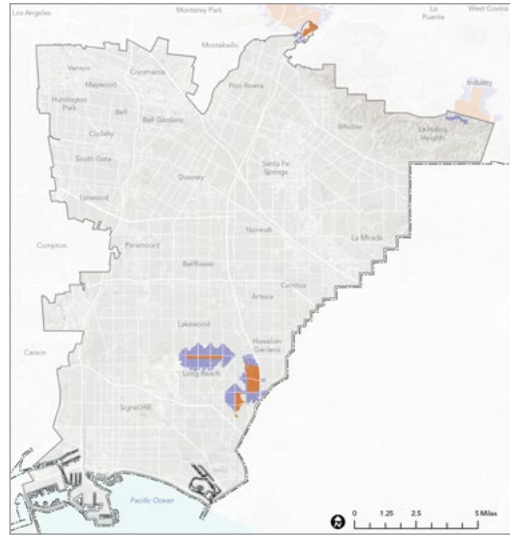
- Regional Recreation Park
- Gateway Regional Study Area
- Los Angeles County
- Major Roads

**678**  
ACRES OF REGIONAL RECREATION PARKLAND

**0.4**  
ACRES OF REGIONAL RECREATION PARKLAND PER 1,000 STUDY AREA RESIDENTS

# REGIONAL RECREATION PARK ACCESS

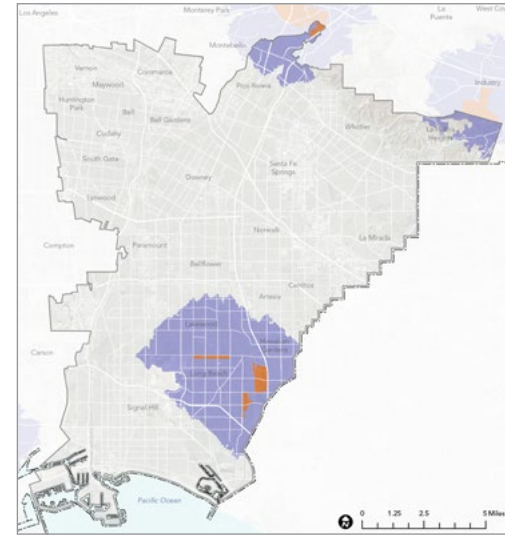
## Walking Distance (0.5 miles from entry)



- Legend**
- Areas within a 0.5-mile walk of a Regional Recreation Park Entry
  - Regional Recreation Park
  - Gateway Regional Study Area
  - Los Angeles County
  - Major Roads

**1%** **OF RESIDENTS LIVE WITHIN WALKING DISTANCE OF A REGIONAL RECREATION PARK**

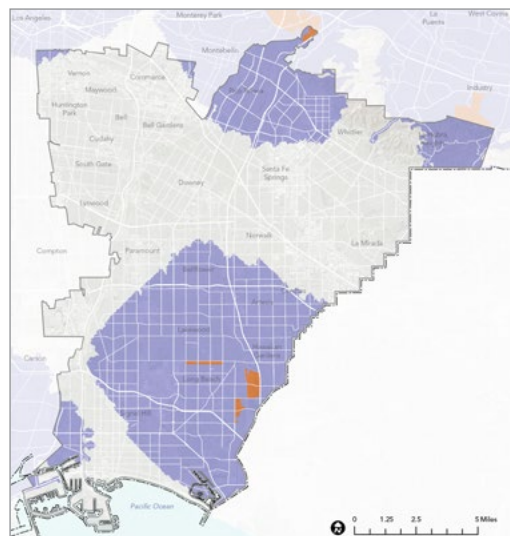
## Cycling Distance (2.5 miles from entry)



- Legend**
- Areas within a 2.5-mile bicycle ride of a Regional Recreation Park Entry
  - Regional Recreation Park
  - Gateway Regional Study Area
  - Los Angeles County
  - Major Roads

**11%** **OF RESIDENTS LIVE WITHIN CYCLING DISTANCE OF A REGIONAL RECREATION PARK**

## Driving Distance (5 miles from entry)



- Legend**
- Areas within a 5-mile drive of a Regional Recreation Park Entry
  - Regional Recreation Park
  - Gateway Regional Study Area
  - Los Angeles County
  - Major Roads

**37%** **OF RESIDENTS LIVE WITHIN DRIVING DISTANCE OF A REGIONAL RECREATION PARK**

## Transit Service (entry is within 0.5 miles of transit stop)

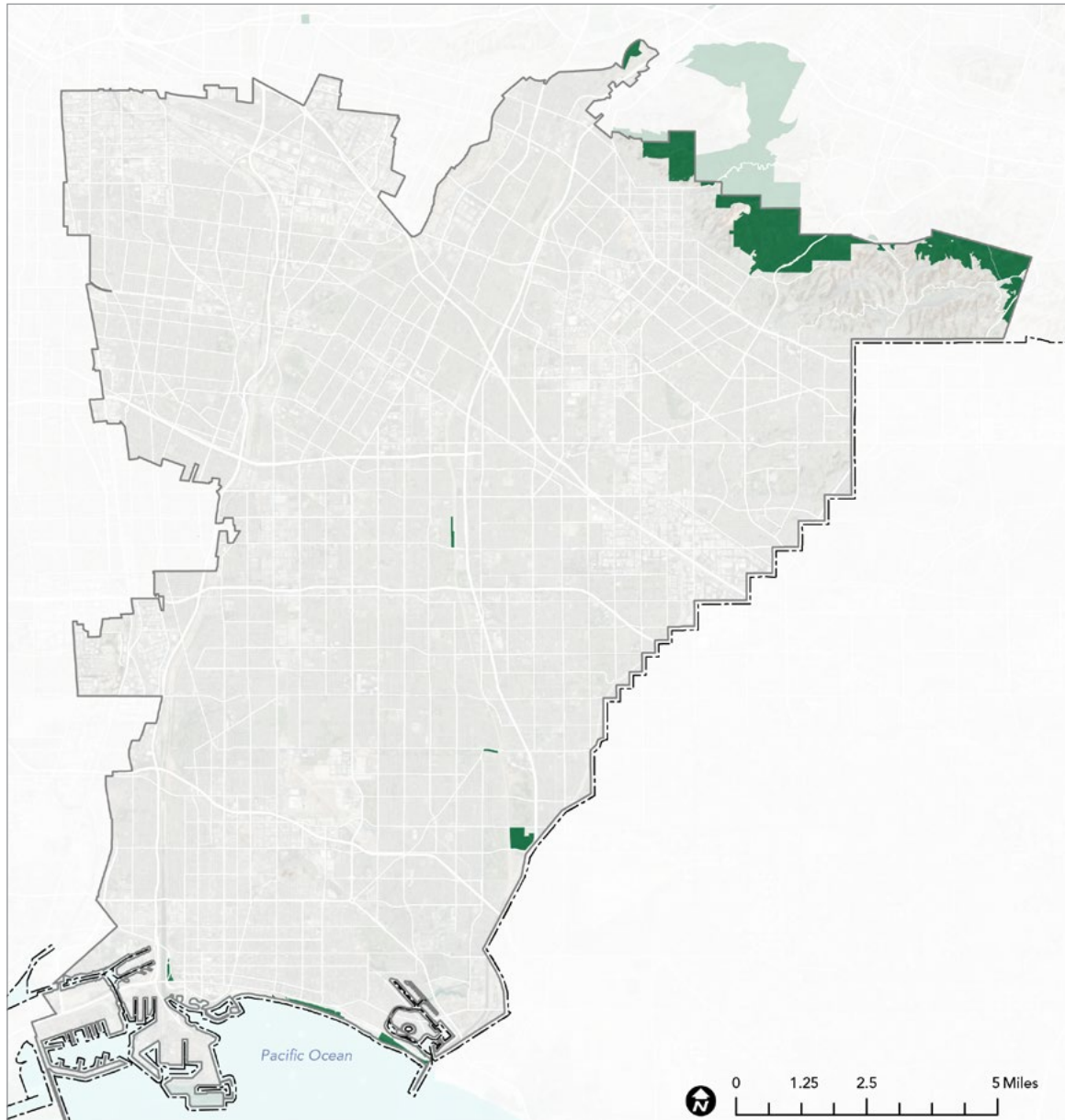


- Legend**
- Entry Point Served by Public Transit (located within a half mile of a Transit Stop)
  - Entry Point Not Served by Public Transit (not located within a half mile of a Transit Stop)
  - Regional Recreation Park
  - Gateway Regional Study Area
  - Los Angeles County
  - Major Roads

**83%** **OF REGIONAL RECREATION PARK ENTRANCES ARE LOCATED WITHIN A HALF-MILE WALK OF A PUBLIC TRANSIT STOP**

Maps source: ArcGIS StreetMap Premium, 2021; 2021 RRE Inventory

# NATURE-BASED RECREATION AREAS

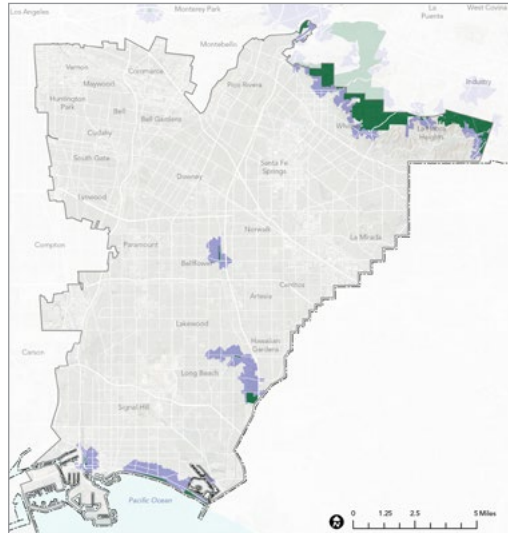


Map source: 2021 RRE Inventory



# NATURE-BASED RECREATION AREA ACCESS

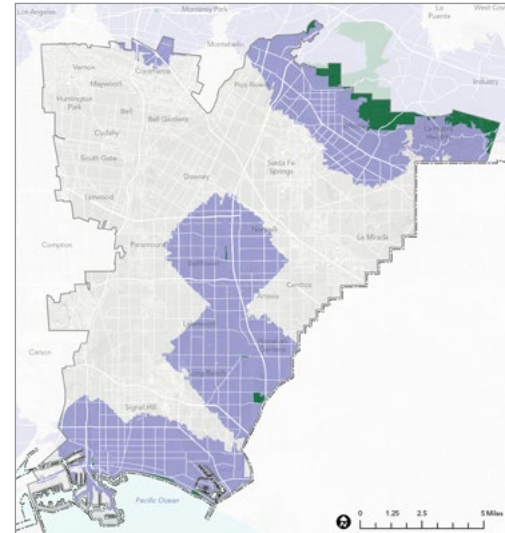
Walking Distance (0.5 miles from entry)



- Legend**
- Areas within a 0.5-mile walk of a Nature-Based Recreation Area Entry
  - Nature-Based Recreation Area
  - Gateway Regional Study Area
  - Los Angeles County
  - Major Roads

**3%** **OF STUDY AREA RESIDENTS LIVE WITHIN WALKING DISTANCE OF A NATURE-BASED RECREATION AREA**

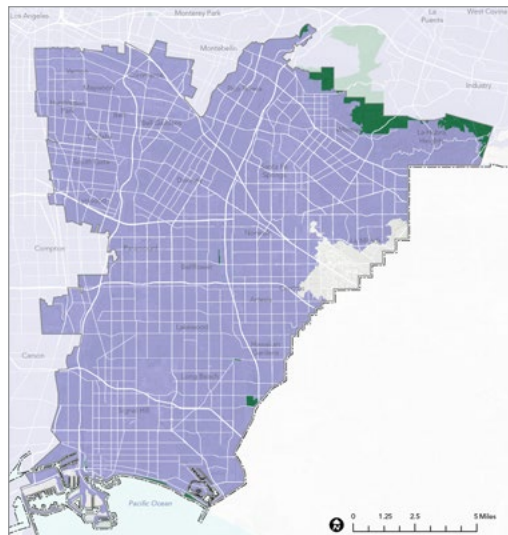
Cycling Distance (2.5 miles from entry)



- Legend**
- Areas within 2.5-mile bicycle ride of a Nature-Based Recreation Area Entry
  - Nature-Based Recreation Area
  - Gateway Regional Study Area
  - Los Angeles County
  - Major Roads

**40%** **OF STUDY AREA RESIDENTS LIVE WITHIN CYCLING DISTANCE OF A NATURE-BASED RECREATION AREA**

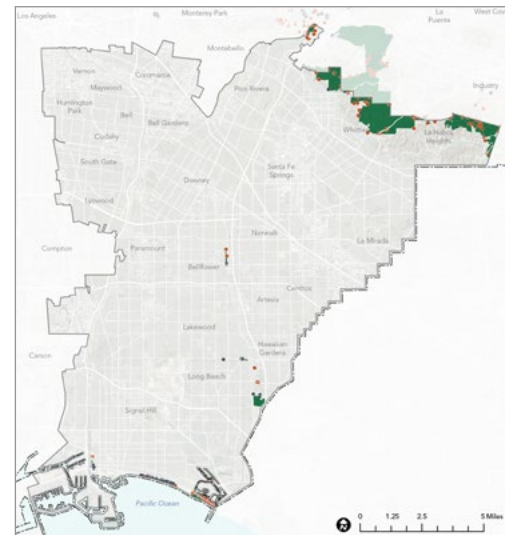
Driving Distance (5 miles from entry)



- Legend**
- Areas within a 5-mile drive of a Nature-Based Recreation Area Entry
  - Nature-Based Recreation Area
  - Gateway Regional Study Area
  - Los Angeles County
  - Major Roads

**100%** **OF STUDY AREA RESIDENTS LIVE WITHIN DRIVING DISTANCE OF A NATURE-BASED RECREATION AREA**

Transit Service (entry is within 0.5 miles of transit stop)



- Legend**
- Entry Point Served by Public Transit (located within a half mile of a Transit Stop)
  - Entry Point Not Served by Public Transit (not located within a half mile of a Transit Stop)
  - Nature-Based Recreation Area
  - Gateway Regional Study Area
  - Los Angeles County
  - Major Roads

**35%** **OF NATURE-BASED RECREATION AREA ENTRY POINTS AREA SERVED BY PUBLIC TRANSIT**

Maps source: ArcGIS StreetMap Premium, 2021; 2021 RRE Inventory



## REGIONAL RECREATION AMENITIES



### GATHERING SPACES



**3**  
Group Picnic Areas



**16**  
Individual Picnic Areas



**13**  
Indoor Event Spaces



**11**  
Outdoor Event Spaces



### SPORTS FACILITIES



**0**  
Shooting Ranges



**20**  
Archery Ranges



**0**  
Snowsport Facilities



### TRAILS AND PATHWAYS



**0**  
Rock Climbing Areas



**314**  
Trailheads



### WATER-BASED RECREATION



**3**  
Boating Areas



**4**  
Swimming Areas



**1**  
Watersport Facilities



**17**  
Waterfront Access Areas



**13**  
Fishing Areas



### OVERNIGHT ACCOMMODATIONS



**0**  
Tent Campsites



**66**  
RV Campsites



### EXPERIENTIAL LEARNING OPPORTUNITIES



**17**  
Visitor Centers



**3**  
Environmental Learning Facilities



**5**  
Gardens



### SUPPORT FACILITIES



**17**  
Concessions



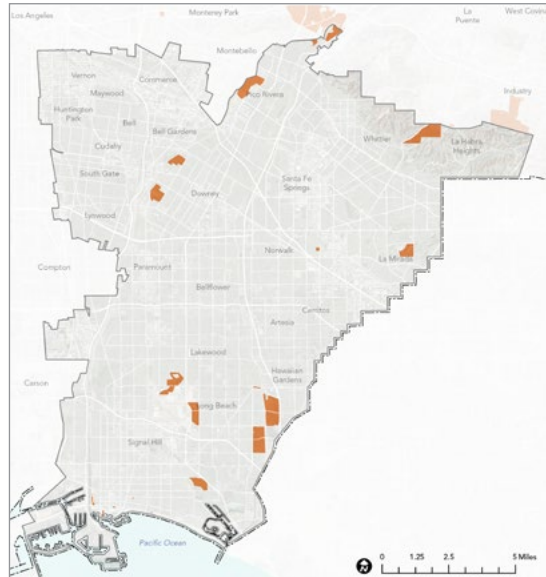
**19,923**  
Parking Spaces



**117**  
Restrooms

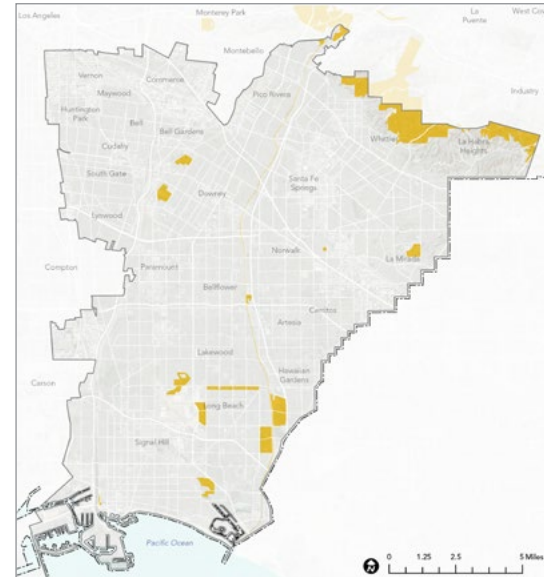
# REGIONAL RECREATION OPPORTUNITY TYPES

## Gathering Spaces



- Legend**
- Regional Sites with Gathering Spaces
  - Gateway Regional Study Area
  - Los Angeles County
  - Major Roads

## Sports Facilities



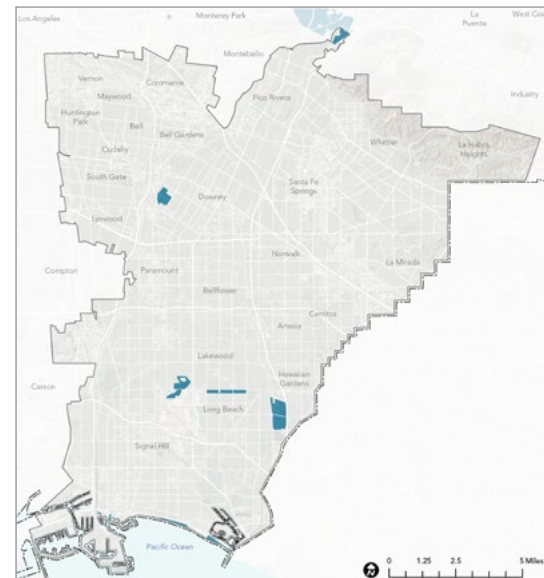
- Legend**
- Regional Sites with Sports Facilities
  - Gateway Regional Study Area
  - Los Angeles County
  - Major Roads

## Trails and Pathways



- Legend**
- Regional Sites with Trails and Pathways
  - Regional Trails
  - Regional Bikeways
  - Gateway Regional Study Area
  - Los Angeles County
  - Major Roads

## Water-Based Recreation

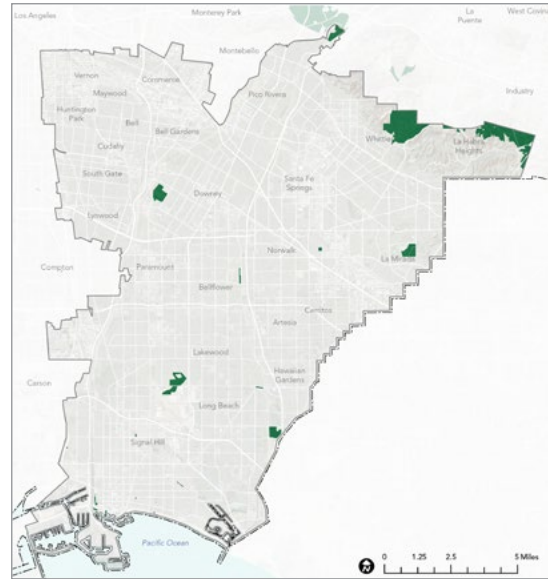


- Legend**
- Regional Sites with Water-Based Recreation
  - Gateway Regional Study Area
  - Los Angeles County
  - Major Roads

Maps source: 2021 RRE Inventory

# REGIONAL RECREATION AMENITY ANALYSIS

## Experiential Learning Opportunities



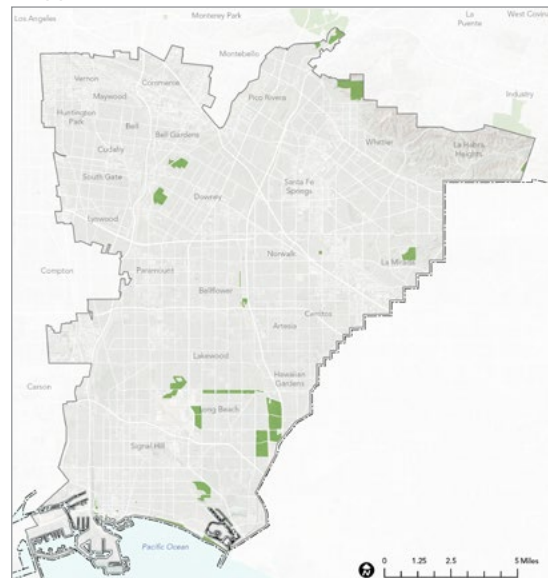
- Legend**
- Regional Sites with Experiential Learning Opportunities
  - Gateway Regional Study Area
  - Los Angeles County
  - Major Roads

## Overnight Accommodations



- Legend**
- Regional Sites with Overnight Accommodations
  - Gateway Regional Study Area
  - Los Angeles County
  - Major Roads

## Support Facilities



- Legend**
- Regional Sites with Support Facilities
  - Gateway Regional Study Area
  - Los Angeles County
  - Major Roads

Maps source: 2021 RRE Inventory

# REGIONAL TRAILS



Map source: LAC DPR, 2021; 2021 RRE Inventory

**Legend**

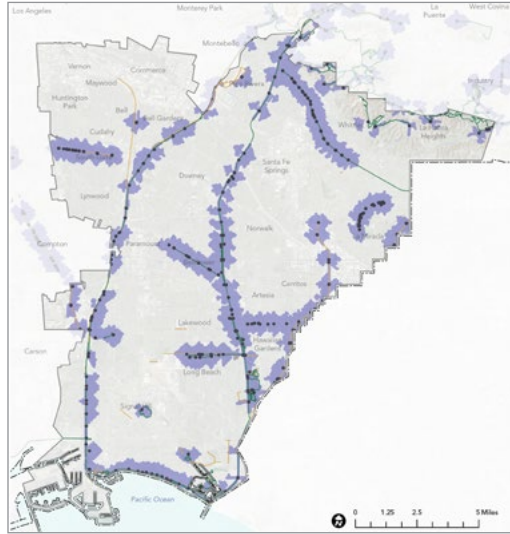
- Regional Trails
- Regional Bikeways
- Trailheads and Access Points
- ▭ Gateway Regional Study Area
- ▭ Los Angeles County
- ▭ Major Roads

 **136**  
**MILES OF REGIONAL TRAIL**

 **0.08**  
**MILES OF REGIONAL TRAIL PER 1,000 STUDY AREA RESIDENTS**

# REGIONAL TRAIL ACCESS

Walking Distance (0.5 miles from entry)



- Legend**
- Areas within a 0.5-mile walk of a Trailhead or Access Point
  - Regional Trails
  - Regional Bikeways
  - Trailheads and Access Points
  - Gateway Regional Study Area
  - Los Angeles County
  - Major Roads

**22%** **OF STUDY AREA RESIDENTS LIVE WITHIN WALKING DISTANCE OF A TRAILHEAD**

Cycling Distance (2.5 miles from entry)



- Legend**
- Areas within a 2.5-mile bicycle ride of a Trailhead or Access Point
  - Regional Trails
  - Regional Bikeways
  - Trailheads and Access Points
  - Gateway Regional Study Area
  - Los Angeles County
  - Major Roads

**100%** **OF STUDY AREA RESIDENTS LIVE WITHIN CYCLING DISTANCE OF A TRAILHEAD**

Driving Distance (5 miles from entry)



- Legend**
- Areas within a 5-mile drive of a Trailhead or Access Point
  - Regional Trails
  - Regional Bikeways
  - Trailheads and Access Points
  - Gateway Regional Study Area
  - Los Angeles County
  - Major Roads

**100%** **OF STUDY AREA RESIDENTS LIVE WITHIN DRIVING DISTANCE OF A TRAILHEAD**

Transit Service (entry is within 0.5 miles of transit stop)

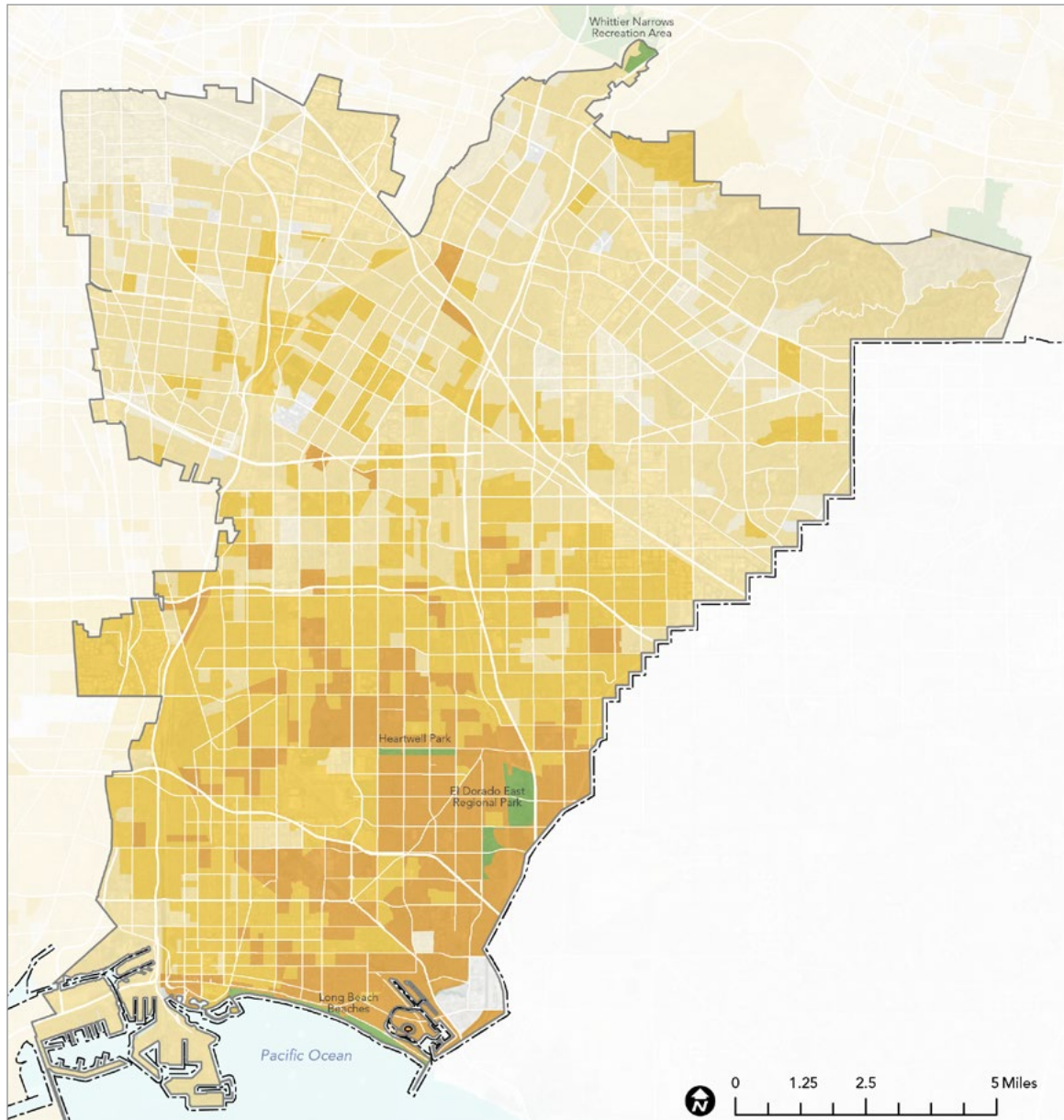


- Legend**
- Trailhead or Access Point Served by Public Transit (located within a half mile walk of a Transit Stop)
  - Trailhead or Access Point Not Served by Public Transit (not located within a half mile walk of a Transit Stop)
  - Regional Trails
  - Regional Bikeways
  - Gateway Regional Study Area
  - Los Angeles County
  - Major Roads

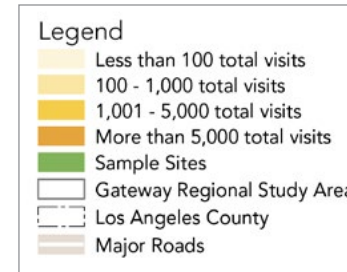
**51%** **OF TRAILHEADS ARE SERVED BY PUBLIC TRANSIT**

Maps source: LAC DPR, 2021; ArcGIS StreetMap Premium, 2021; 2021 RRE Inventory

# REGIONAL SITE VISITORSHIP



Map source: Unacast, 2021; 2021 RRE Inventory



## REGIONAL SITES INCLUDED IN VISITORSHIP ANALYSIS

- » Hartwell Park
- » El Dorado East Regional Park
- » Long Beach Beaches

VISITORSHIP REPORT 2019 - 2020

# Heartwell Park



## VITAL STATISTICS

## ANNUAL VISITORSHIP / VISITOR ORIGIN



**KEY PARK AMENITIES**

- Community Center
- Library
- Children's Play Area
- Camping Sites
- Fishing Pond
- Lake
- Baseball Field
- Basketball Court
- Roller Hockey Court
- Soccer Field
- Softball Field
- Volleyball Court
- Biking Path
- Walking Path

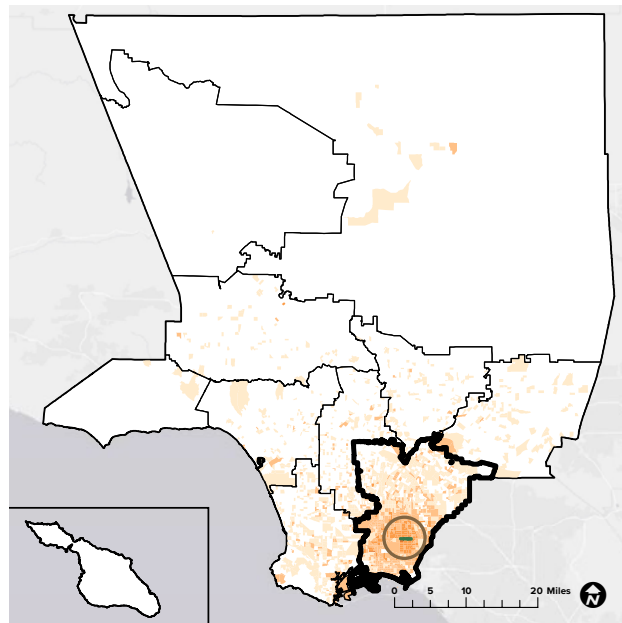
**DESCRIPTION**

Heartwell Park has 122.5 acres of scenic landscaped grounds for everyone to enjoy. Located in Long Beach, this park has recreational amenities including baseball fields, basketball courts, a roller hockey court, soccer fields, softball fields, restrooms and a volleyball court. Heartwell Park also includes a lake, a community center, picnic areas, playgrounds, the Ruth Bach Library, Long Beach Day Nursery day care, meeting areas and overnight camping.

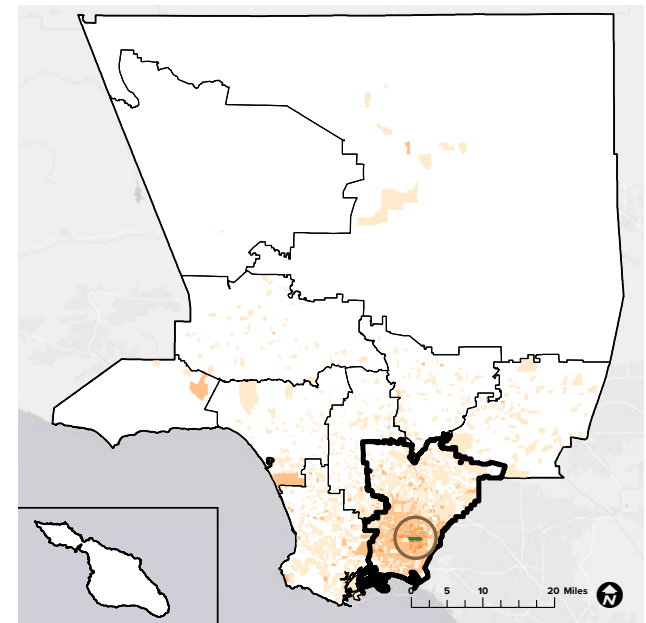
**WEBSITE**

[www.longbeach.gov/park/park-and-facilities/directory/heartwell-park/](http://www.longbeach.gov/park/park-and-facilities/directory/heartwell-park/)

2019  
**511,186** visitors



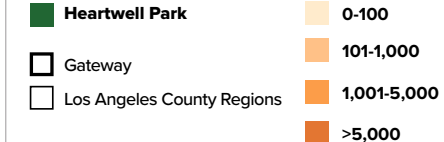
2020  
**387,112** visitors



**81%**  
originated from within LA County

**19%**  
originated from outside LA County

**74%**  
originated from Gateway



**83%**  
originated from within LA County

**17%**  
originated from outside LA County

**76%**  
originated from Gateway

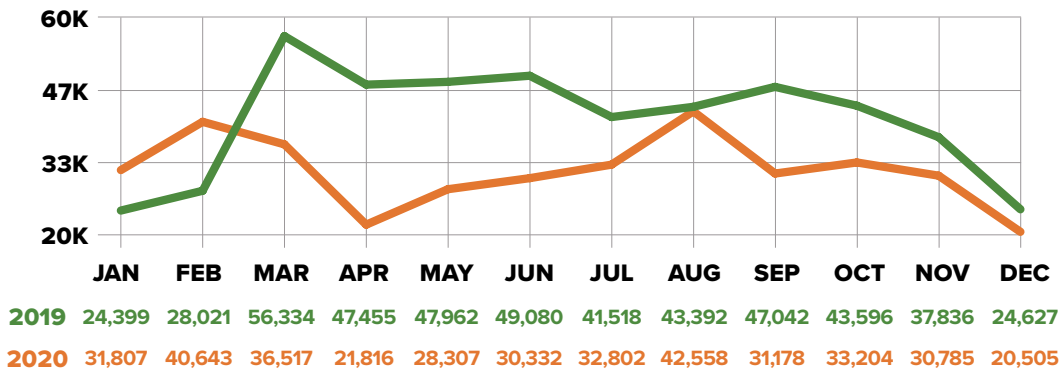
Sources: Unacast 2021 (LA County DPR 2020, LA County PNA 2016, ESRI 2021)

VISITORSHIP REPORT 2019 - 2020

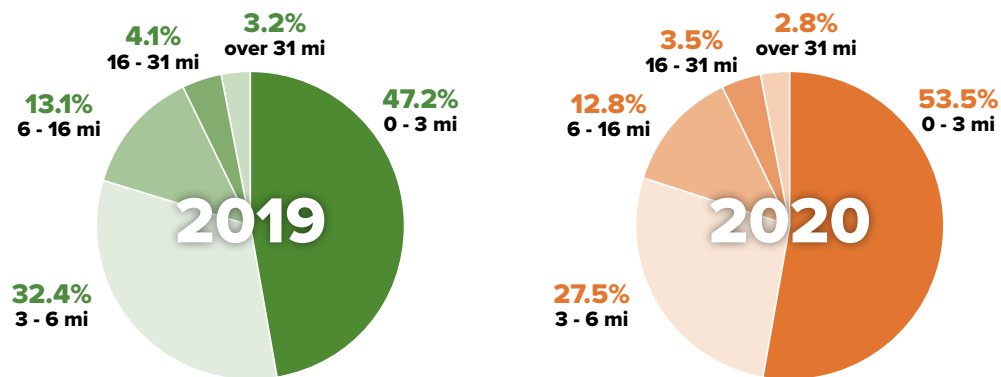
# Heartwell Park



## MONTHLY VISITORSHIP



## TRAVEL DISTANCE



## DEMOGRAPHICS

### EDUCATION

	High School Diploma	Some College, No Degree	Associates Degree	Bachelors Degree	Masters Degree & Above
<b>2019</b>	15.5%	22.0%	7.9%	18.3%	7.4%
<b>2020</b>	15.2%	21.8%	7.8%	18.8%	8.0%

### INCOME

	Less than \$24,999	\$25,000 - \$49,999	\$50,000 - \$74,999	\$75,000 - \$99,999	\$100,000 - \$124,999	More than \$125,000
<b>2019</b>	14.7%	13.7%	19.3%	13.3%	11.1%	27.6%
<b>2020</b>	14.3%	13.2%	19.5%	13.3%	10.6%	28.8%

### GENDER IDENTITY

	Male	Female
<b>2019</b>	47.9%	51.9%
<b>2020</b>	47.8%	51.9%

### RACE/ETHNICITY

	Amer-Indian	Asian	Black	Hispanic	White	2 or More	Other
<b>2019</b>	0.3%	14.6%	8.0%	36.5%	36.4%	2.7%	0.2%
<b>2020</b>	0.2%	13.7%	8.1%	34.0%	40.0%	2.8%	0.2%

### AGE

	18-29	30-39	40-49	50-59	60-69	70-79	80+
<b>2019</b>	20.8%	17.1%	18.5%	17.8%	13.8%	6.8%	4.9%
<b>2020</b>	20.7%	17.0%	17.8%	18.4%	13.6%	6.8%	5.3%



VISITORSHIP REPORT 2019 - 2020

# El Dorado East Regional Park



## VITAL STATISTICS

## ANNUAL VISITORSHIP / VISITOR ORIGIN



**KEY PARK AMENITIES**

- Nature Center
- Children's Play Areas
- Archery Range
- Walking Trails
- Biking Trails
- Camping Sites
- Fishing Lakes
- Fitness Zone
- Model Aircraft Flying Area
- Model Sailboat Area
- Group Picnic Areas
- Train Ride

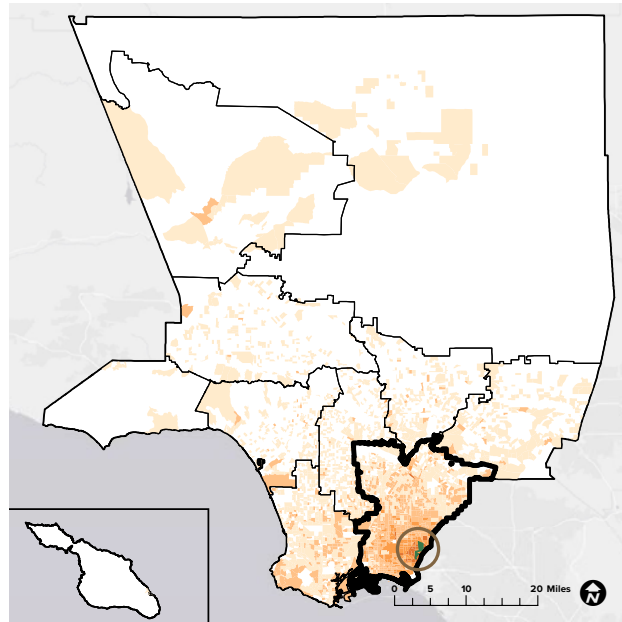
**DESCRIPTION**

El Dorado East Regional Park is a 388.2-acre park with an archery range, bike trails, campgrounds, barbeque and picnic areas, playgrounds, a multi-station physical fitness course and a nature center for visitors to enjoy. For aircraft enthusiasts, this park has a radio-controlled model aircraft flying area, a glider field and AMA Aircraft. El Dorado East Regional Park also offers train ride and party packages, bike rental and archery classes. Park rangers are on-site as are parking lots and restrooms.

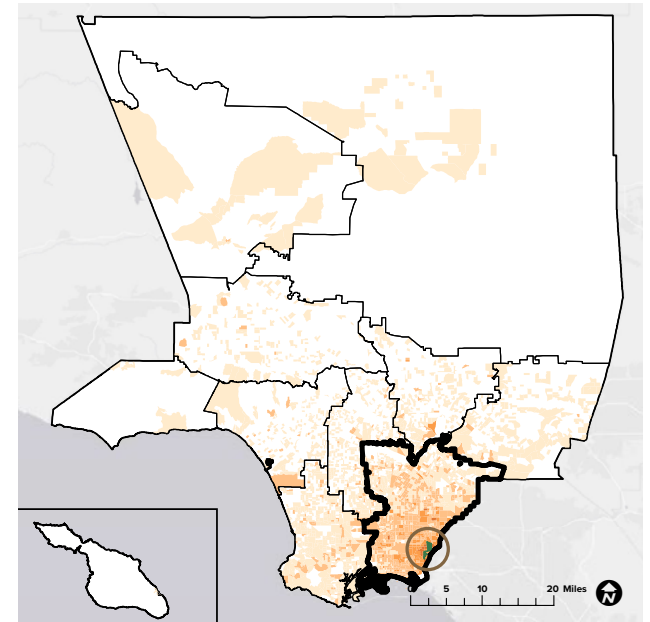
**WEBSITE**

[www.longbeach.gov/park/park-and-facilities/directory/el-dorado-east-regional-park/](http://www.longbeach.gov/park/park-and-facilities/directory/el-dorado-east-regional-park/)

2019  
**1,052,404** visitors



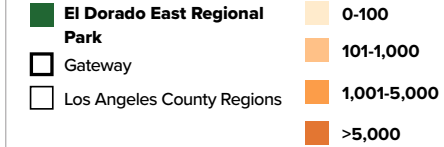
2020  
**807,622** visitors



**60%**  
originated from within LA County

**40%**  
originated from outside LA County

**52%**  
originated from Gateway



**63%**  
originated from within LA County

**27%**  
originated from outside LA County

**56%**  
originated from Gateway

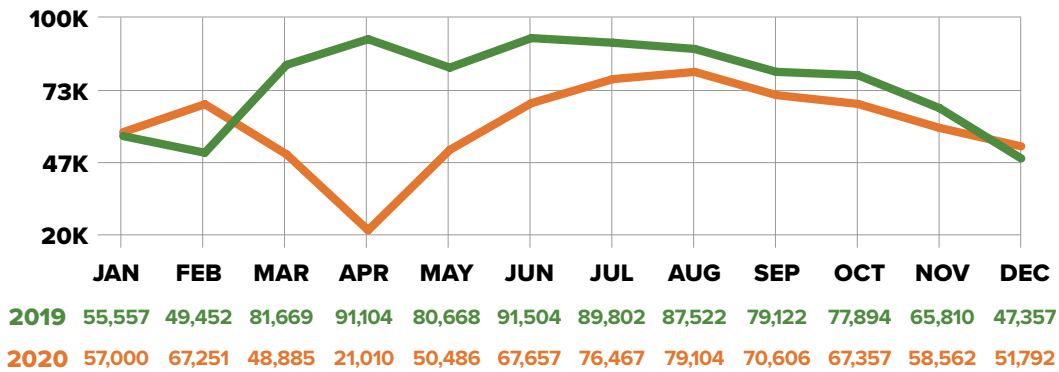
Sources: Unacast 2021 (LA County DPR 2020, LA County PNA 2016, ESRI 2021)

VISITORSHIP REPORT 2019 - 2020

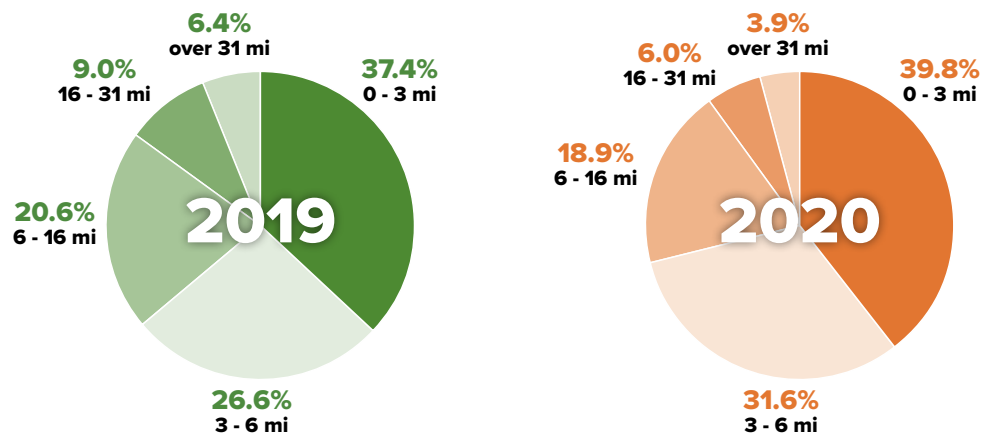
# El Dorado East Regional Park



## MONTHLY VISITORSHIP



## TRAVEL DISTANCE



## DEMOGRAPHICS

### EDUCATION

	High School Diploma	Some College, No Degree	Associates Degree	Bachelors Degree	Masters Degree & Above
2019	14.7%	20.0%	7.6%	21.2%	8.8%
2020	14.8%	20.3%	8.1%	20.5%	8.4%

### INCOME

	Less than \$24,999	\$25,000 - \$49,999	\$50,000 - \$74,999	\$75,000 - \$99,999	\$100,000 - \$124,999	More than \$125,000
2019	13.8%	12.9%	18.7%	13.6%	10.6%	29.6%
2020	14.1%	13.4%	19.2%	13.5%	10.6%	28.6%

### GENDER IDENTITY

	Male	Female
2019	47.7%	51.7%
2020	47.8%	51.6%

### RACE/ETHNICITY

	Amer-Indian	Asian	Black	Hispanic	White	2 or More	Other
2019	0.4%	14.9%	5.7%	31.3%	43.4%	3.1%	0.2%
2020	0.4%	15.8%	5.9%	32.6%	41.1%	3.1%	0.2%

### AGE

	18-29	30-39	40-49	50-59	60-69	70-79	80+
2019	19.7%	16.3%	18.5%	17.9%	14.1%	7.8%	5.1%
2020	19.6%	16.3%	18.5%	18.1%	14.2%	7.7%	5.0%

VISITORSHIP REPORT 2019 - 2020

# Long Beach Beaches



## VITAL STATISTICS

## ANNUAL VISITORSHIP / VISITOR ORIGIN



**KEY PARK AMENITIES**

- Children's Play Areas
- Beach Access
- Swimming Beach
- Boating/ Watersport Areas
- Dog Beach
- Fitness Zones
- Volleyball Courts
- Picnic Areas

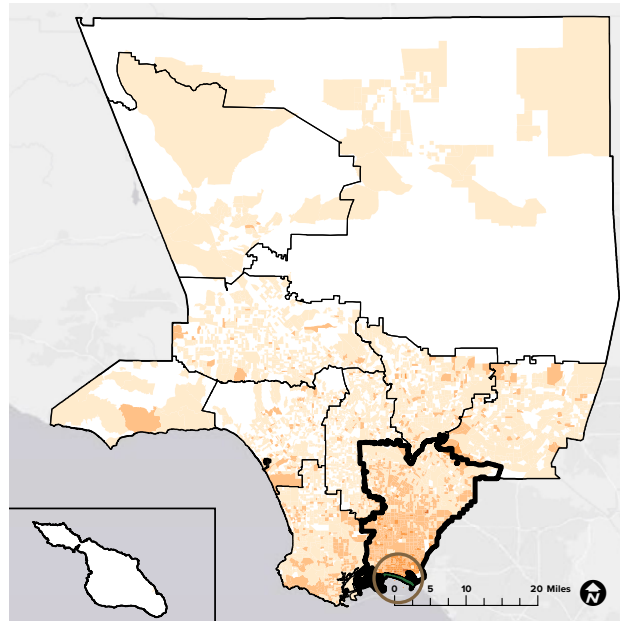
**DESCRIPTION**

The City of Long Beach has miles of beach shoreline accessible at a series of public beaches. Services and amenities vary by location and include bike rentals, playgrounds, restrooms, volleyball courts, dog beaches, picnic areas, and trails.

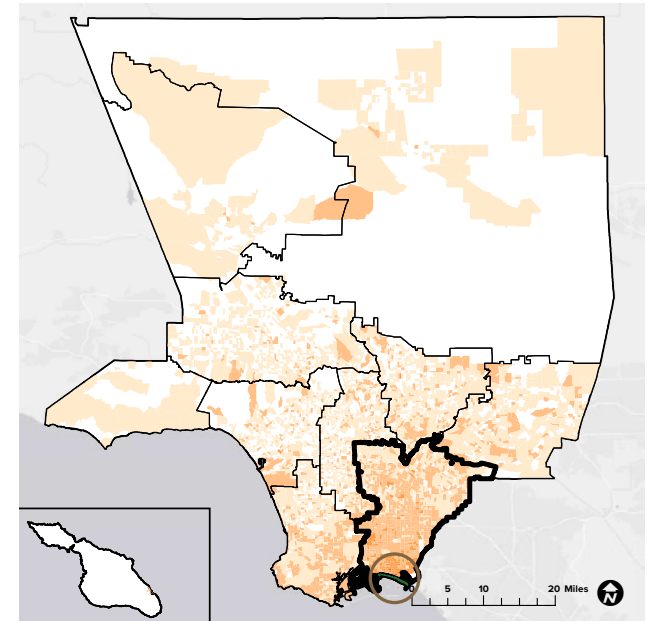
**WEBSITE**

- [www.longbeach.gov/park/marine/beaches-and-amenities/alamitos-beach/](http://www.longbeach.gov/park/marine/beaches-and-amenities/alamitos-beach/)
- [www.longbeach.gov/park/marine/beaches-and-amenities/junipero-cherry-beach/](http://www.longbeach.gov/park/marine/beaches-and-amenities/junipero-cherry-beach/)
- [www.longbeach.gov/park/marine/beaches-and-amenities/mothers-beach/](http://www.longbeach.gov/park/marine/beaches-and-amenities/mothers-beach/)

2019  
**1,209,441** visitors



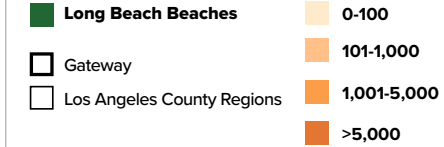
2020  
**1,440,671** visitors



**54%**  
originated from within LA County

**46%**  
originated from outside LA County

**40%**  
originated from Gateway



**60%**  
originated from within LA County

**40%**  
originated from outside LA County

**44%**  
originated from Gateway

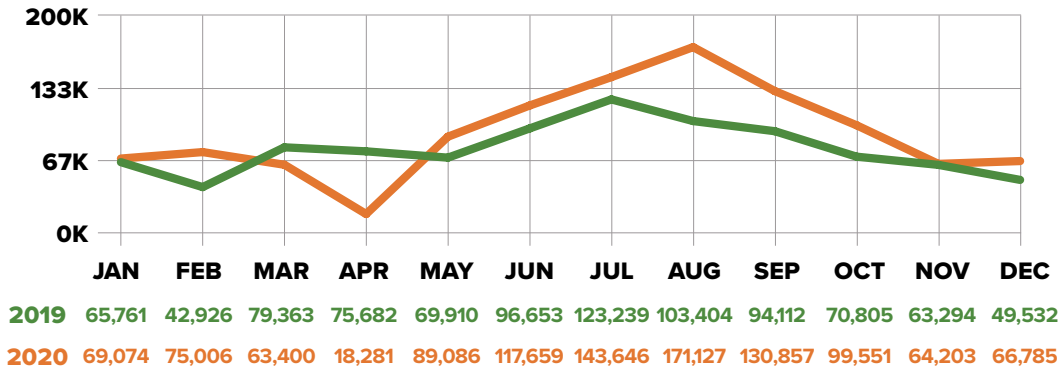
Sources: Unacast 2021 (LA County DPR 2020, LA County PNA 2016, ESRI 2021)

VISITORSHIP REPORT 2019 - 2020

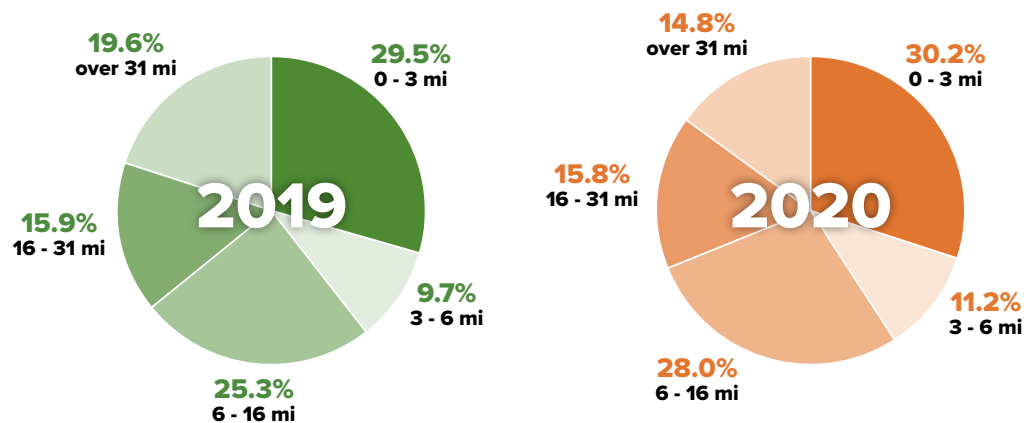
# Long Beach Beaches



## MONTHLY VISITORSHIP



## TRAVEL DISTANCE



## DEMOGRAPHICS

### EDUCATION

	High School Diploma	Some College, No Degree	Associates Degree	Bachelors Degree	Masters Degree & Above
2019	14.1%	18.7%	6.8%	20.4%	8.6%
2020	14.5%	18.7%	6.8%	19.5%	8.3%

### INCOME

	Less than \$24,999	\$25,000 - \$49,999	\$50,000 - \$74,999	\$75,000 - \$99,999	\$100,000 - \$124,999	More than \$125,000
2019	17.4%	15.6%	20.8%	12.8%	9.8%	23.0%
2020	17.4%	16.0%	21.4%	12.9%	9.9%	22.2%

### GENDER IDENTITY

	Male	Female
2019	48.9%	50.9%
2020	48.9%	51.1%

### RACE/ETHNICITY

	Amer-Indian	Asian	Black	Hispanic	White	2 or More	Other
2019	0.3%	12.9%	7.2%	35.0%	41.2%	2.6%	0.2%
2020	0.3%	12.8%	7.3%	38.5%	37.9%	2.6%	0.2%

### AGE

	18-29	30-39	40-49	50-59	60-69	70-79	80+
2019	23.4%	18.5%	17.5%	17.2%	12.5%	6.7%	4.0%
2020	23.5%	18.9%	17.8%	17.0%	12.0%	6.8%	4.0%

# COMMUNITY ENGAGEMENT THEMES

## BARRIERS RESIDENTS EXPERIENCE TO USING REGIONAL PARKS AND FACILITIES



### LACK OF SHADE

Without shade, many parks are unusable during hot months.



### LACK OF TRANSIT

Public transit to parks is limited, and there are few options for carpooling or shuttles.



### LIMITED PARKING

Not enough parking at some parks and facilities.



### COST

Fees to enter and/or park at some parks and facilities or rent equipment is too expensive for low income families.



### LACK OF INFORMATION

Residents do not know where parks are located, what facilities are available, or how to use and get to amenities, like campsites.



### TOO CROWDED

Not enough facilities to meet demand, so popular parks and trails are often crowded.



### SAFETY

Concerns about unhoused people in the park, as well as pandemic safety precautions like social distancing and mask wearing at popular facilities and along trails.



### POLLUTED WATERWAYS

Rivers, lakes, beaches and other waterways are sometimes off limits due to high bacteria levels or sewage spills.



### LIMITED ADA ACCESSIBILITY

Facilities are not accessible to disabled and older residents.



### LIMITED STAFF

Not enough parks staff to share information and provide security and needed facilities maintenance.



### NOT ENOUGH MAINTENANCE AT PARKS AND FACILITIES

Park facilities and trails need repairs, maintenance and restoration.



### LACK OF OUTDOOR RECREATION AREAS

Including trails, pet-friendly areas, campsites and affordable water-based recreation.



### LACK OF NEARBY GREENSPACE

Many residents live in park-poor communities and do not have access to parks or green spaces near to where they live.

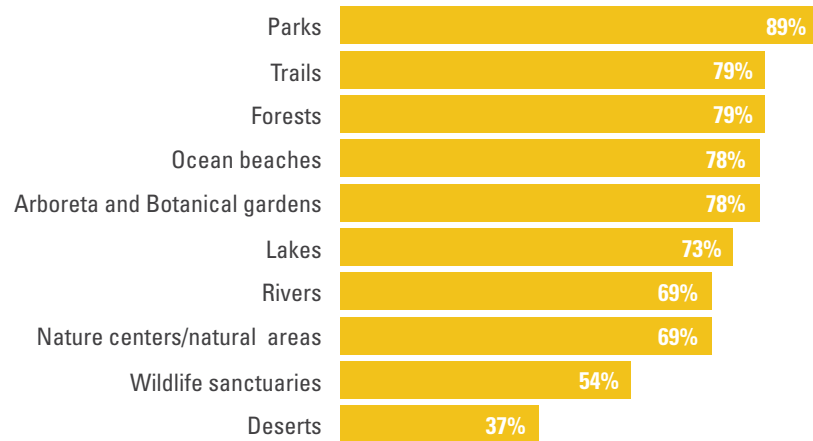
“We only have one public pool in our city, and it is not functioning. We are primarily Latinx community our children deserve to learn how to swim.”

“Signage is old and outdated at many local and county parks, and sometimes confusing.”

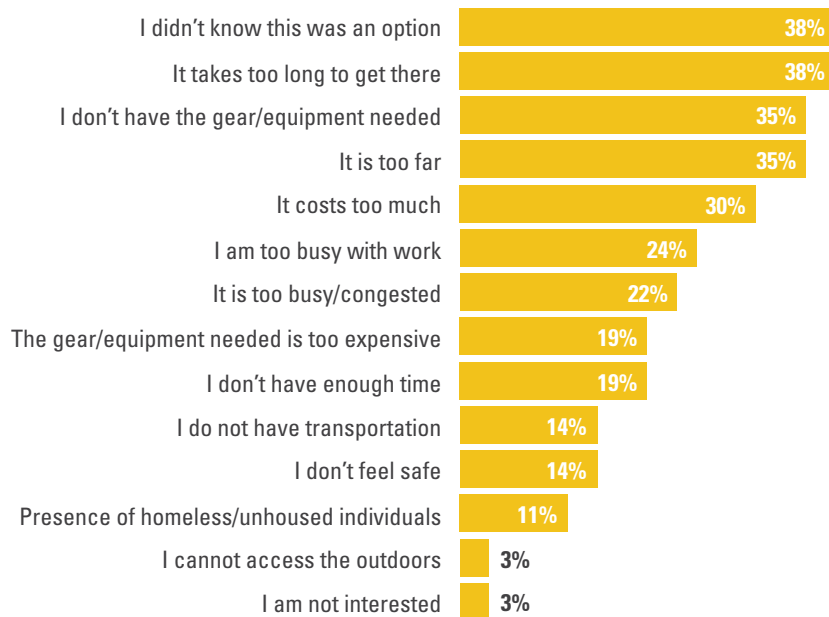
“It’s difficult to find hiking trails online. I have found them but many of the sites for regional parks and other places - the sites are not user friendly.”

► *Residents Regional Parks Use and Activities*

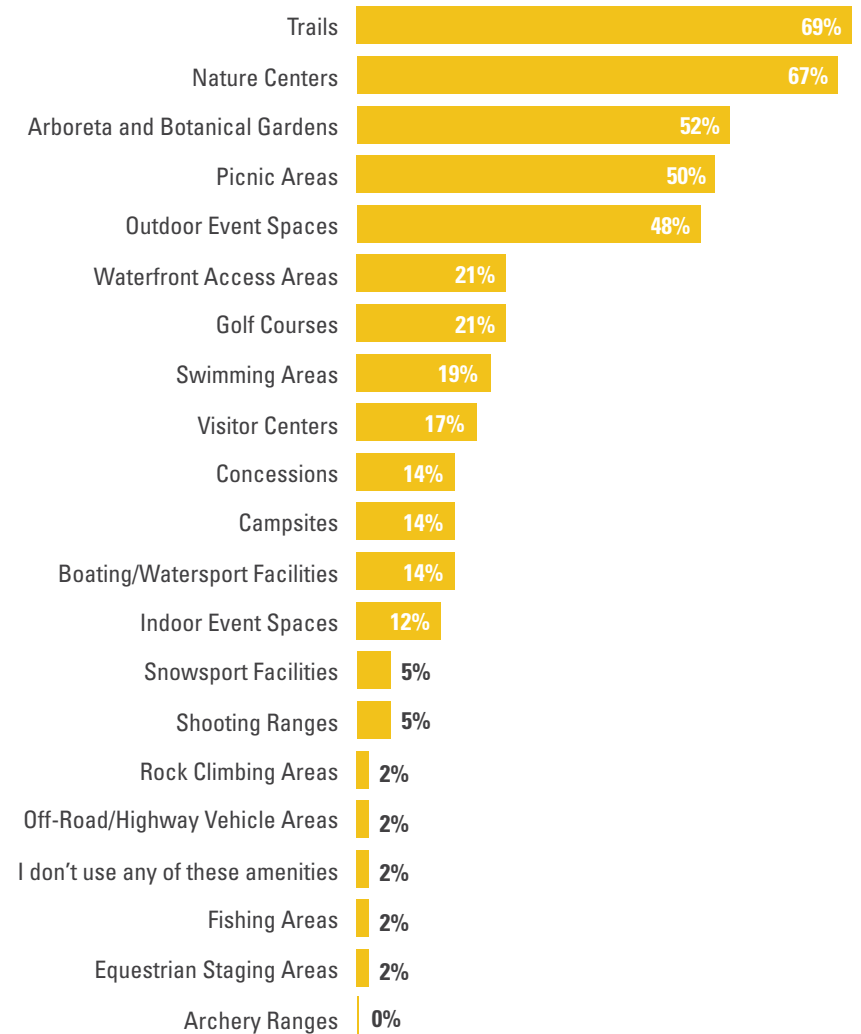
**I visit these types of regional parks and facilities the most...**



**I can't go outside or to parks because...**



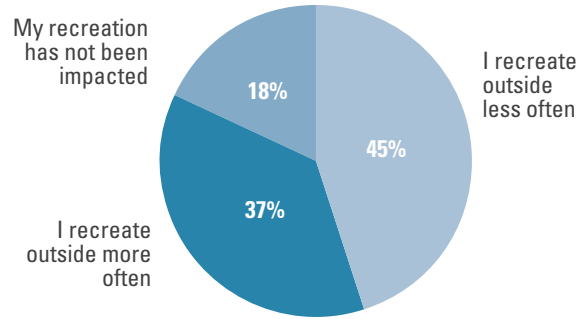
**I use these regional park amenities most often:**



Appendix A | Gateway

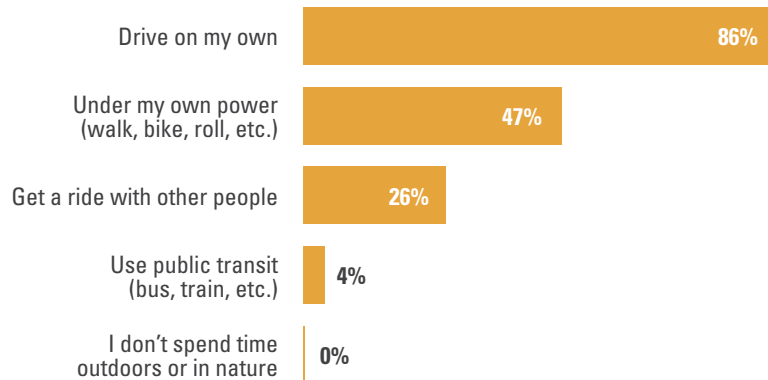
► Covid-19 Impacts on Recreation for Residents in the Gateway Region

**COVID has affected how I recreate...**

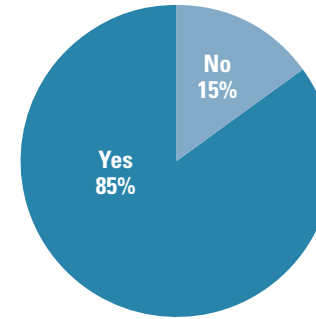


► Travel to Parks

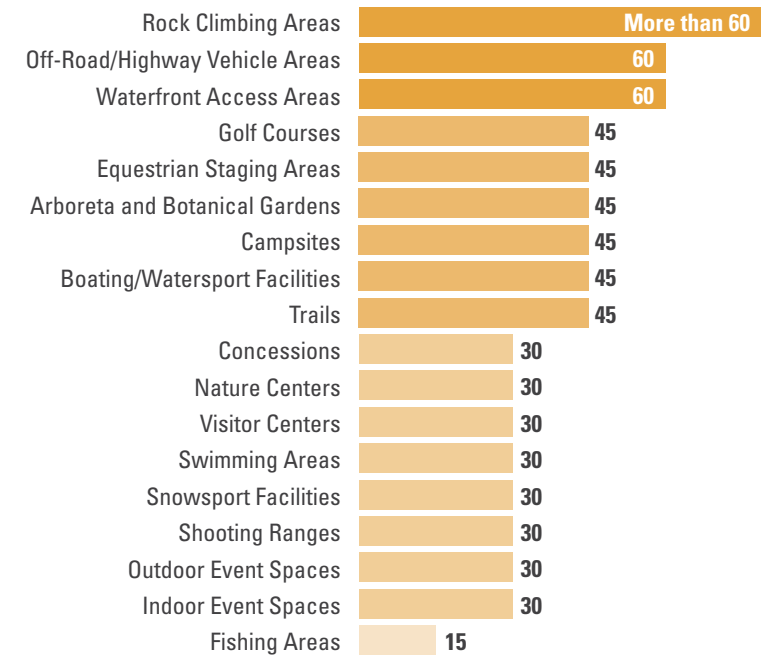
**When I travel to parks, these are all the ways I get there...**



**Because of COVID I am looking for recreation opportunities closer to home...**

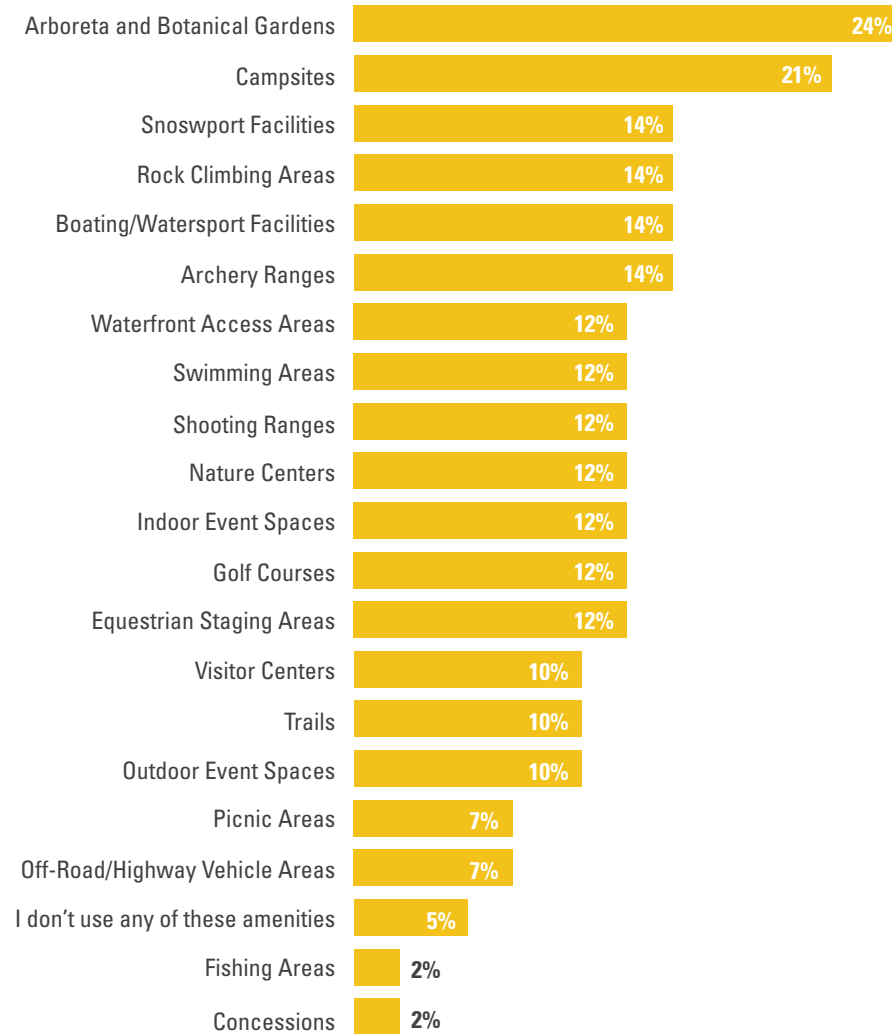


**I'm willing to travel this many minutes to parks and amenities...**



► *Regional Parks Needs in the Gateway Region*

**The greatest parks needs in my community include...**



► *Quality of Regional Park Amenities in the Gateway Region*

**These amenities received the highest rate of good, fair or poor quality ratings from respondents...**

**Good**

Fishing Areas	100%
Boating/Watersport Facilities	67%
Golf Courses	67%
Indoor Event Spaces	60%
Outdoor Event Spaces	60%

**Fair**

Visitor Centers	71%
Campsites	67%
Picnic Areas	57%
Shooting Ranges	50%
Snowsport Facilities	50%

**Poor**

Rock Climbing Areas	100%
Equestrian Staging Areas	100%
Off-Road/Highway Vehicle Areas	100%
Snowsport Facilities	50%



# COMMUNITY ENGAGEMENT THEMES

## COMMUNITY SUGGESTIONS TO INCREASE AND IMPROVE VISITS TO REGIONAL PARKS AND FACILITIES



### MORE SHADE

More shade structures and trees in gathering and playground spaces.



### ACCESS TO WATER

Water fountains for users and animals in parks and along trails, more splash pads and water features for cooling off, better access to lakes, wetlands and waterways in the area.



### TRANSIT OPTIONS

Provide free and more frequent transit to the beach and to other regional parks.



### ADDRESS PARKING AND CONGESTION

Provide incentives for carpooling and review parking options at popular facilities.



### ENHANCED SAFETY MEASURES

Provide more lighting at night, and patrols on trails and at facilities. Ensure visitors are adhering to social distancing and other protective measures during the pandemic.



### ADDRESS HOMELESSNESS

Expand Services to support unhoused people who use parks.



### BETTER ACCESS TO INFORMATION

More and multilingual information and media about events at Regional Parks, trail and facilities locations, available amenities and opportunities to provide input.



### IMPROVED SIGNAGE

Provide additional and interactive wayfinding, interpretive and multilingual signage in parks and along trails.



### ADA ACCESSIBILITY

Provide wheelchair and disabled accessible trails and facilities, including restrooms.



### EXPAND NATIVE AMERICAN ACCESS AND FACILITIES

Provide access to ceremonial spaces for gatherings and events and provide spaces for indigenous-led education centers and activities.



### EXPAND COMMUNITY EVENTS

Open up park spaces for the community to hold more events.



### IMPROVED MAINTENANCE AND INFRASTRUCTURE

Clean and maintain restrooms, trails and campsites, provide more picnic tables and seating.



### ADDITIONAL STAFF

Hire more representative staff to guide visitors and maintain trails and parks.



### BETTER ACCESS TO PROGRAMS

Improve the online reservation system, gather community input to improve the variety of recreation classes, and provide affordable equipment and classes for all ages, especially youth and seniors.



### MORE RECREATION FACILITIES

Extend facilities hours, provide more outdoor equipment and recreation spaces, and build additional parks, playgrounds, dog-friendly areas.



### EXPAND CONCESSIONS

Provide more concessions at parks and facilities.



### PROVIDE FREE ENTRY TO FACILITIES

Organize free days for LA County residents at sites with entry fees and prioritize access at popular sites for those who come by transit or carpool to parks.



### EXPAND AND PRESERVE GREENSPACE

More trees, pocket parks, native habitat areas, learning gardens, and natural open spaces with native and regenerative landscaping for passive recreation and viewing wildlife.



### ENHANCE PRESERVATION AND STEWARDSHIP

Organize stewardship and restoration activities at parks and along the LA River and provide more science and nature-based education.



### PARTNERSHIPS WITH COMMUNITY ORGANIZATIONS

Expand park use and greenspace access through school and community partnerships and make it easier for groups to register and use parks and facilities.

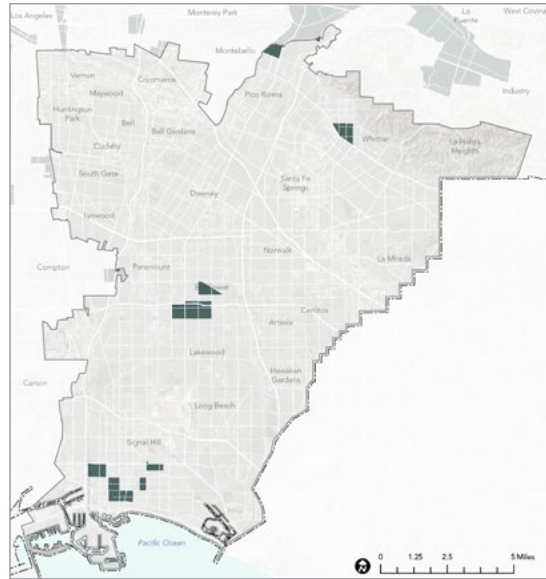
**“Playgrounds for children would be great to have near [other] amenities.”**

**“For hot summer days, splash pads are a lifesaver for families that don’t have pools or access to pools and need a place to cool down.”**

**“Keep nature intact. Protect the urban wildlife.”**

# REGIONAL RECREATION PRIORITY ANALYSIS

## Areas Experiencing the Highest Levels of Barriers and Vulnerability



- Legend**
- Areas of Moderate to High Vulnerability Across All Four Dimensions
  - Gateway Regional Study Area
  - Los Angeles County
  - Major Roads



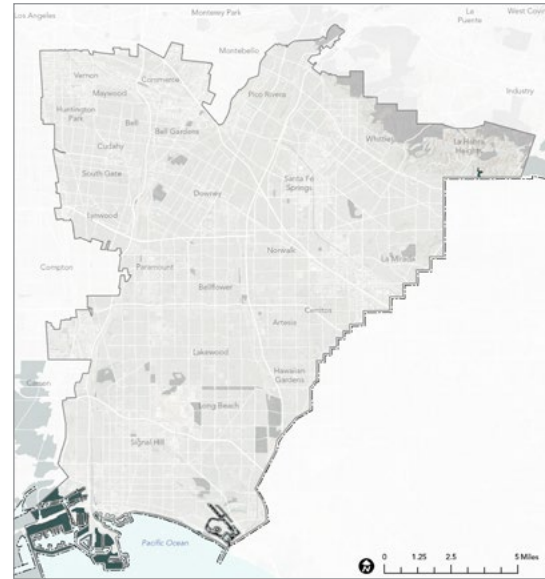
**High Levels of Social and Transportation Barriers**



**High Levels of Health and Environmental Vulnerability**

Map source: HPI, 2021; 2021 RRE Inventory

## Areas Located in Low Proximity to Regional Recreation Sites



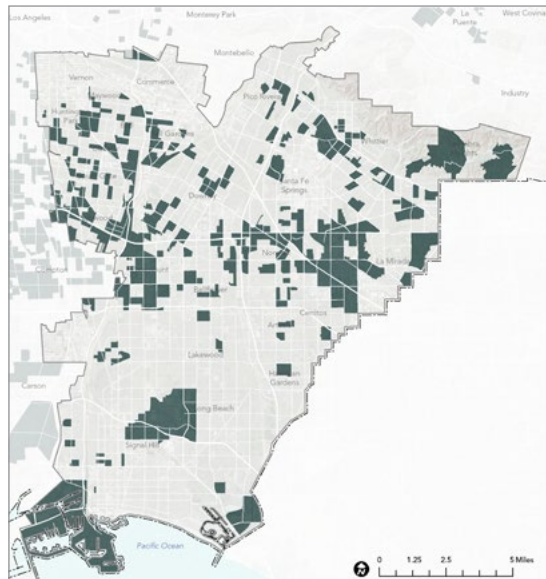
- Legend**
- Areas in Low Proximity to Regional Recreation Facilities (beyond a 2.5-mile bicycle ride to any Regional Recreation Park Entry Points, Nature-Based Recreation Area Entry Points or Trailheads and Access Points)
  - Regional Site Inventory
  - Gateway Regional Study Area
  - Los Angeles County
  - Major Roads



**Low Proximity to Regional Recreation Sites**

Map source: ArcGIS StreetMap Premium, 2021; 2021 RRE Inventory

## Areas With Low Visitorship Rates to Regional Recreation Sites



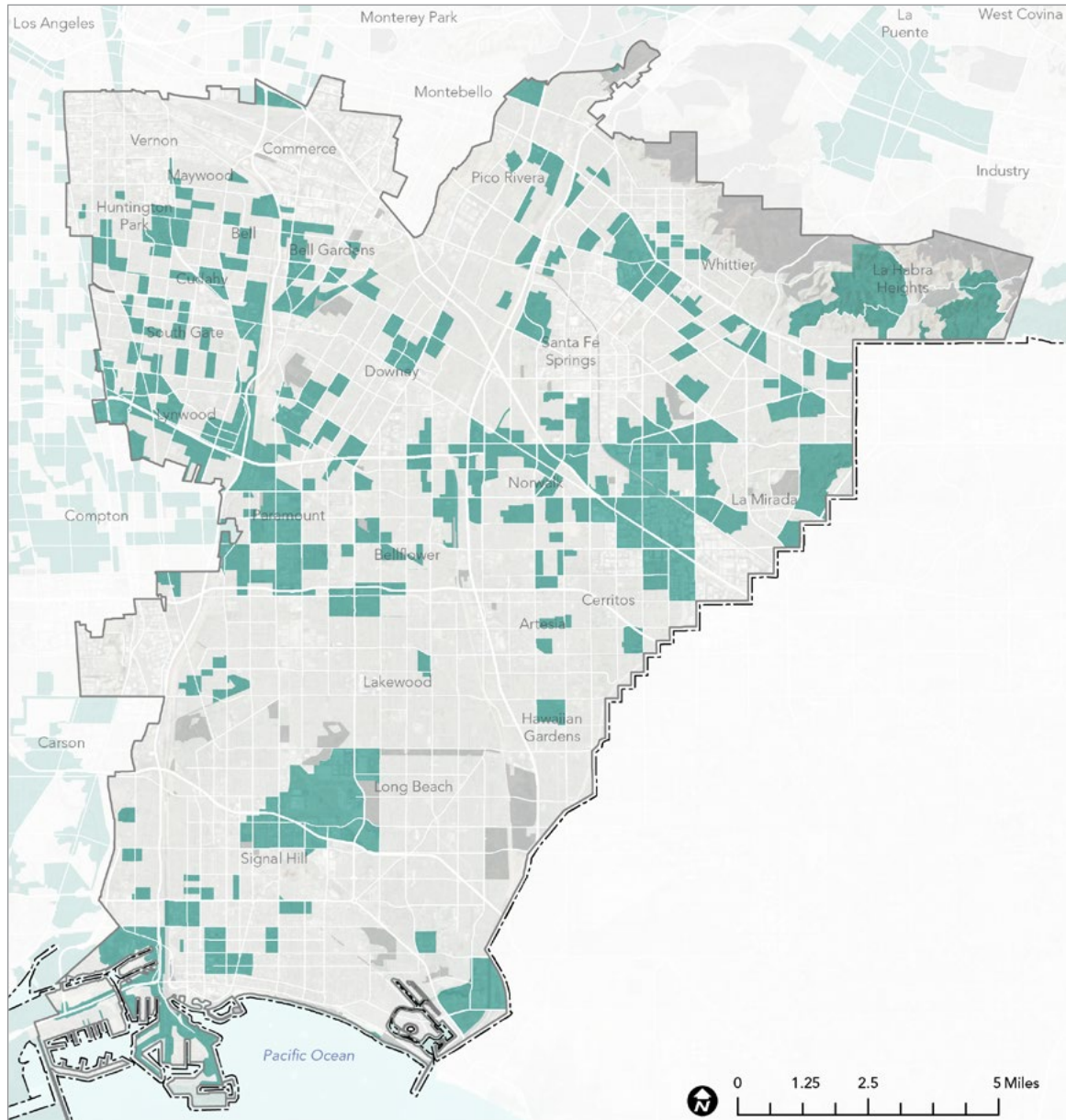
- Legend**
- Areas with Low Visitorship Rates (less than one observed visit per resident over the two-year period)
  - Gateway Regional Study Area
  - Los Angeles County
  - Major Roads



**Low Visitorship Rates to Regional Recreation Sites**

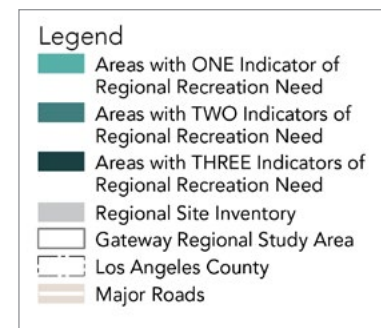
Map source: Unacast, 2021; 2021 RRE Inventory

# REGIONAL RECREATION PRIORITY AREAS



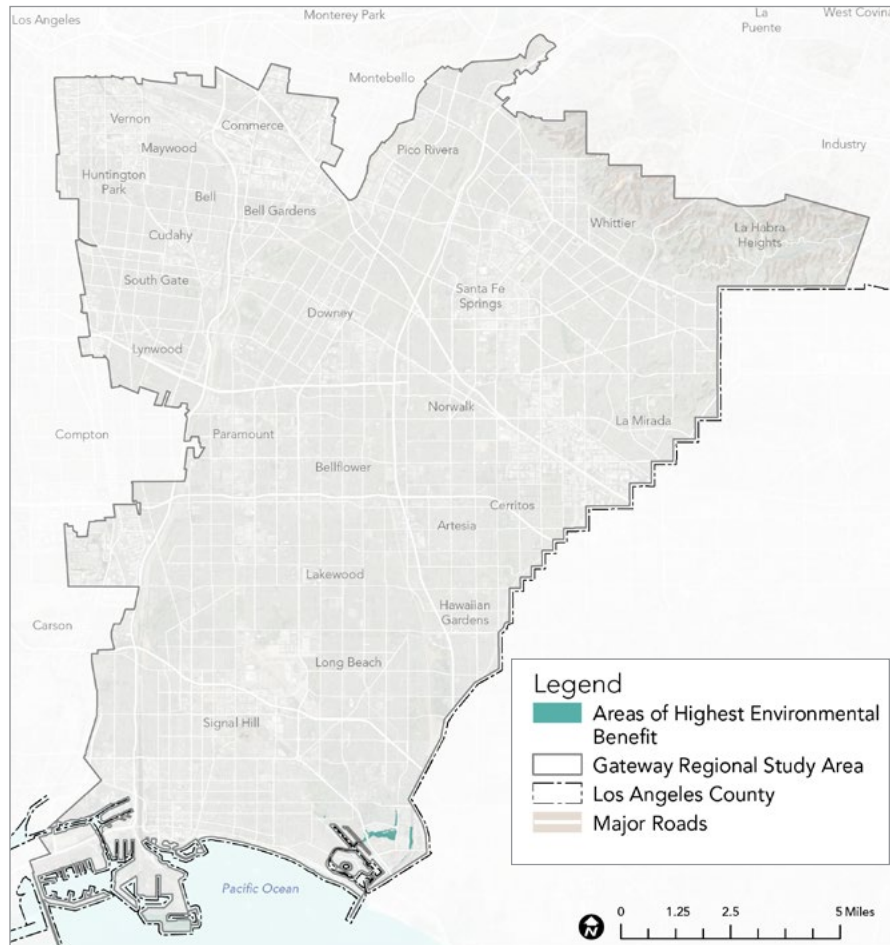
Map source: HPI, 2021; Unacast, 2021; ArcGIS StreetMap Premium, 2021; 2021 RRE Inventory

Areas with:

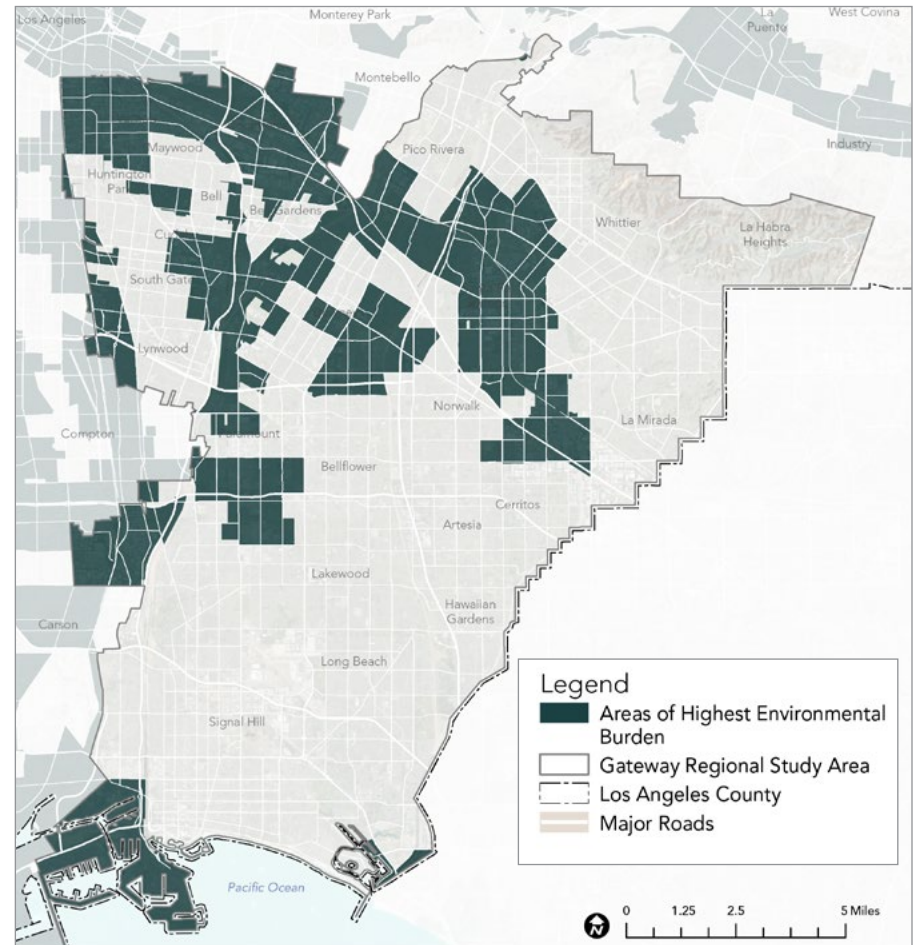


# ENVIRONMENTAL CONSERVATION AND RESTORATION PRIORITY AREAS

Priority Areas for Conservation



Priority Areas for Restoration



Maps source: CDFW ACE, 2021; USGS, 2021; COEHHA, 2021; CalFire FRAP 2015