

we all need



PNA+

APPENDIX A

REGIONAL STUDY

AREA PROFILES

This project was previously called the Regional and Rural Edition (RRE) to emphasize its focus on regional and rural recreation needs and priorities. This project name was used during the data collection, and community engagement and outreach phases which occurred primarily in 2021. As this report was being completed in 2022, DPR decided to rename the project the Parks Needs Assessment Plus (PNA+) to clarify and better communicate that this project complements and offers new information not previously included in the 2016 Parks Needs Assessment (PNA), such as mapping and analyses related to population vulnerability, environmental benefits, environmental burdens, and priority areas for environmental conservation, environmental restoration, regional recreation, and rural recreation. (Please note that there remains some text and graphic references to the RRE in this document because that was the project name when some components of this study were completed.)

EAST SAN GABRIEL VALLEY REGIONAL STUDY AREA PROFILE

STUDY AREA ID #8

- » Study Area Description
- » Study Area Demographics
- » Population Vulnerability
- » Regional Site Inventory
- » Environmental Benefits
- » Environmental Burdens
- » Regional Recreation Parks
- » Regional Recreation Park Access
- » Nature-Based Recreation Areas
- » Nature-Based Recreation Area Access
- » Nature-Based Recreation Amenities
- » Regional Trails
- » Regional Trail Access
- » Regional Site Visitorship
- » Community Engagement Themes
- » Regional Recreation Priorities
- » Environmental Conservation and Restoration Priorities

Note

This profile is not intended to stand alone. For definitions of key terms and a full description of the analysis summarized within please refer to Chapters 3 and 4 of the main report as well as Appendix C: Technical Resources.



STUDY AREA DESCRIPTION

LOCATION

The East San Gabriel Valley Study Area contains the easternmost areas of Los Angeles County, and is located south of the Angeles National Forest, north of the Orange County border, and east of Interstate-605. The study area's eastern border is the San Bernardino County line. The study area includes the cities of Azusa, Baldwin Park, Claremont, Covina, Diamond Bar, Glendora, Industry, La Puente, La Verne, Pomona, San Dimas, Walnut, and West Covina. Unincorporated areas located within the study area include Avocado Heights, Charter Oak, East Azusa, Glendora (islands), East Irwindale, Hacienda Heights, Northeast La Verne, Rowland Heights, Valinda, South Diamond Bar, South San Jose Hills, Walnut (islands), West and Northeast San Dimas, Covina (islands), West and North Claremont, and West Puente Valley.

GEOGRAPHY

The study area's geography is characterized by valleys and rolling, dry hills. The San Gabriel River runs along the Interstate-605 and the western boundary of the study area. The Puente Hills form the southern border for the study area and include natural areas that offer recreational opportunities for the region. The northern portion of the study area is characterized by the steep upgrade and urban-wildland interface with the Angeles National Forest and San Gabriel Mountains.

STUDY AREA ISSUES

The primary constraints in the study area are a growing shortage of large blocks of developable land and worsening traffic congestion. Many of the traditional suburbs within the study area are maturing and facing infrastructure capacity issues and limited mobility options. Specifically, solid waste and sewerage disposal are concerns. In addition, portions of the cities of Diamond Bar, Pomona, San Dimas, and Walnut, and the unincorporated areas in the study area are on septic systems, which are subject to failure and potential groundwater contamination if not properly maintained. Transportation improvements will be critical for the long-term economic health of the study area. Traffic on the major east-west freeways, including the Interstate-10, Interstate-210 and State Route-60, is heavily congested during peak hours, with commuters generally traveling west in the morning for work and east in the evening to return home.

The study area also includes environmental and hazard constraints. The Puente Hills, which include portions of Rowland Heights and Hacienda Heights, contain fault traces and wildfire threats. Wildfires and landslides also pose safety hazards in the foothill communities. Flood hazards are a concern in low-lying areas centered around West Covina. In addition, the study area contains the following Significant Ecological Areas (SEAs): San Gabriel Canyon, San Dimas Canyon/San Antonio Wash, East San Gabriel Valley and Puente Hills.

PARK AND RECREATION RELATED ISSUES

- » Areas in the western portion of the East San Gabriel region, including the cities of Baldwin Park and La Puente and several unincorporated communities, were identified as having High or Very High Park Need in the 2016 Countywide Parks Needs Assessment.
- » The study area has a limited number of trails. The San Gabriel Valley Greenway Network has the potential to transform channels, washes, and rivers into an interconnected network of bike paths, trails, and greenspaces in a highly developed area. The plan to implement the network is expected to be finalized by the end of 2022 with a list of priority projects.
- » Lack of access to a personal vehicle has left many communities in the East San Gabriel Valley unable to reach the wealth of nearby public lands in the Angeles National Forest.
- » The proposed Puente Hills Regional Park will transform a portion of a former landfill into a long-awaited park with specialized regional recreational amenities and a network of multi-use trails that will serve residents of the San Gabriel Valley and beyond.

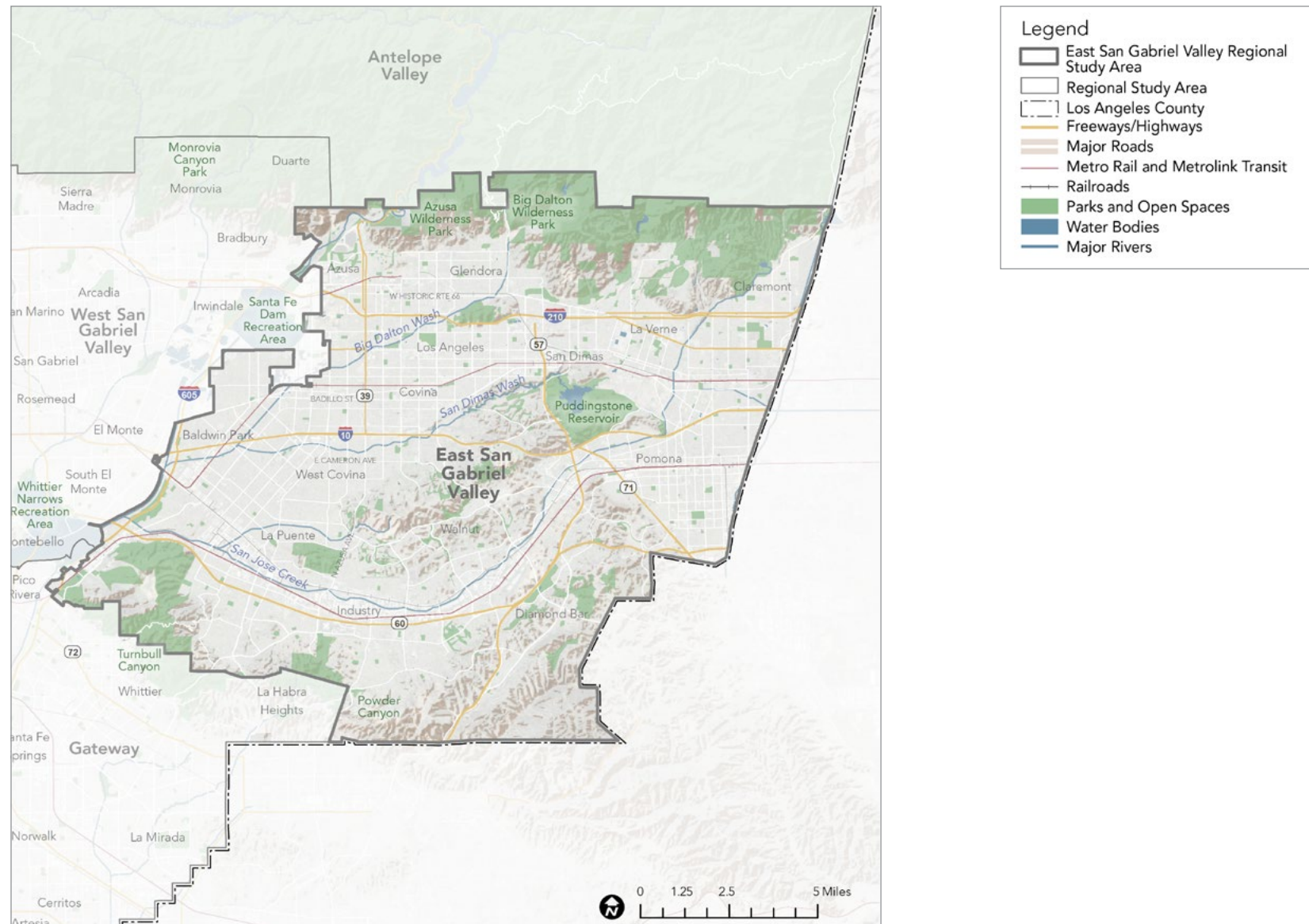
ANALYSIS FINDINGS

- » The area experiences a moderately high concentration of vulnerable populations, including parts of West Covina and Pomona.
- » The regional recreation facilities and trails in the foothills of the San Gabriel Mountains are difficult to access without the use of a personal vehicle.
- » The area experiences the highest rates of visitorship to various park facilities in the Puente Hills, Frank G. Bonelli Regional Park, and the entries to the Angeles National Forest in Claremont.
- » High Regional Recreation Need is found in pockets across the study area due to their low visitorship rates and disparate vulnerable populations.
- » Several areas located adjacent to existing open space, such as Chino Hills, Puente Hills, and the Angeles National Forest, have been identified as a priority area for conservation.
- » Various areas, including portions of Pomona and south La Verne, have been identified as a priority for restoration due to their relatively poor environmental health.
- » The study area only has 0.19 miles of regional trails per 1,000 residents, which is well below the countywide average of 0.33.

COMMUNITY ENGAGEMENT THEMES

- » Heat, distance, lack of transit and safe bike routes, limited information about facilities, safety and accessibility are identified as barriers to park use for residents who live in the study area.
- » Residents say they need more shade, splash pads and access to water, affordable transit, accessible facilities, campsites, trails and trail networks, more multilingual signage and information, and affordable and open access to park programs and facilities.
- » Nearly half of survey respondents (44%) say they are recreating outside more and 81% are looking to do that closer to home because of COVID.

EAST SAN GABRIEL VALLEY REGIONAL STUDY AREA

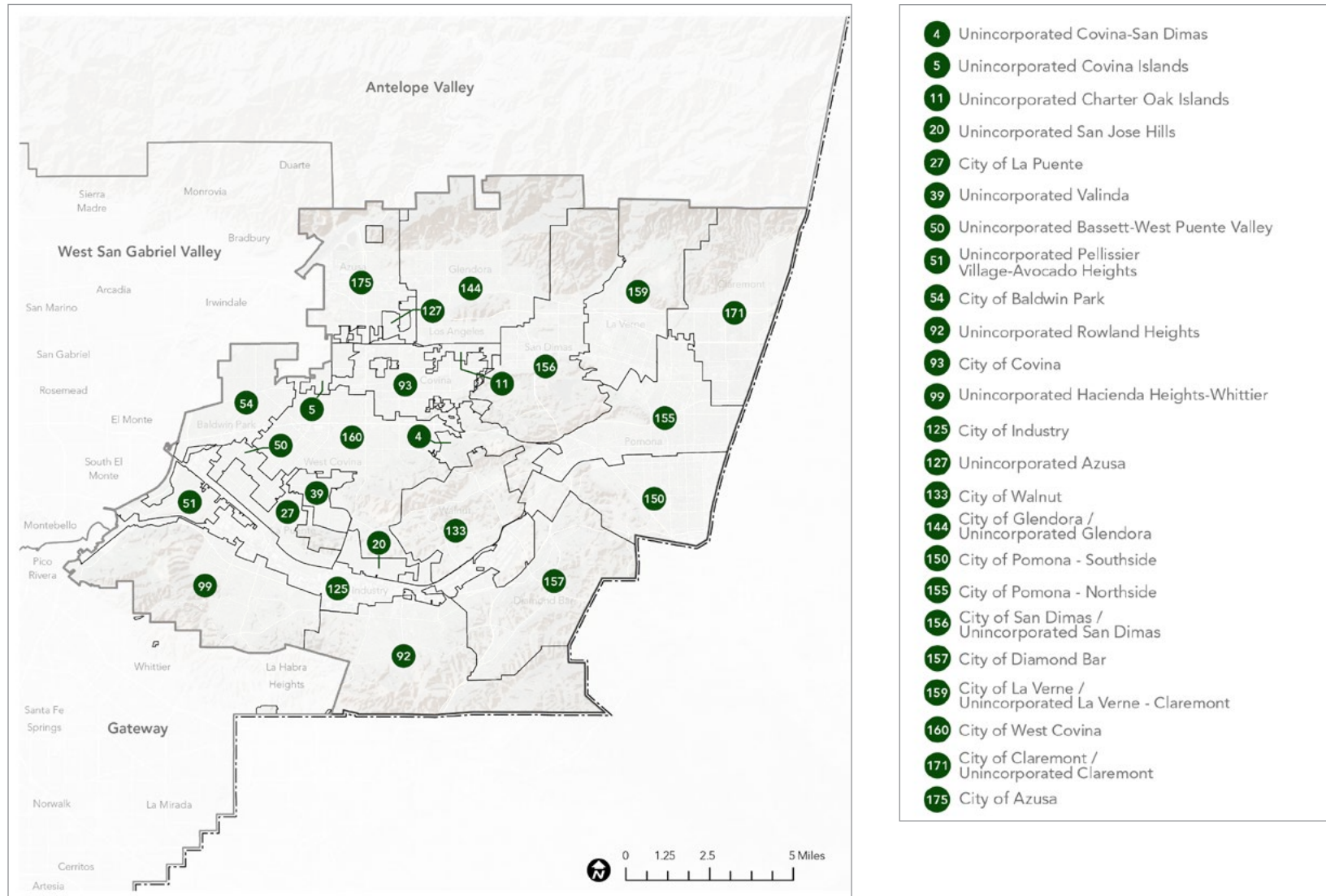


Map source: US Census, 2019; Esri, 2021; MIG, 2021; LAC GIS, 2021; USGS NHD, 2021

Note: All Regional Study Profile maps in this chapter include and refer to the sources listed here as basemap layers.

PNA STUDY AREAS LOCATED WITHIN REGIONAL STUDY AREA

This map shows the relationship of Regional Study Area to the boundaries of the study areas that were analyzed in the 2016 PNA.



Map source: PNA, 2016

STUDY AREA DEMOGRAPHICS

Population, Race, Ethnicity, Gender, Income, Age, and Education Level

Population	
Total	933,116

Race	Percentage
White	49.7%
Black or African American	3.5%
American Indian and Alaska Native	0.58%
Asian	21.3%
Native Hawaiian and Other Pacific Islander	0.17%
Some Other Race	21.1%
Two or More Races	3.6%
Total	100%

Ethnicity	Percentage
Hispanic or Latino	53.5%
Not Hispanic or Latino	46.5%
Total	100%

Income	Percentage
Less than \$25,000	16.0%
\$25,000-\$49,999	21.8%
\$50,000-\$74,999	19.0%
\$75,000-\$99,999	14.4%
\$100,000-\$150,000	16.5%
\$150,000+	12.2%
Total	100%

Gender	Percentage
Male	49.1%
Female	50.9%
Total	100%

Age	Percentage
Under 5 years	5.8%
5 to 9 years	6.2%
10 to 14 years	7.0%
15 to 19 years	8.4%
20 to 29 years	15.6%
30 to 39 years	12.4%
40 to 49 years	13.7%
50 to 59 years	13.1%
60 to 69 years	9.6%
70 to 79 years	4.9%
80+ years	3.3%
Total	100%

Education Level	Percentage
Less than 9th Grade	12.3%
9th-12th grade	9.8%
HS Grad	23.8%
Some college, no degree	20.5%
Associates	7.8%
Bachelors	17.8%
Graduate or professional degree	8.4%
Total	100%

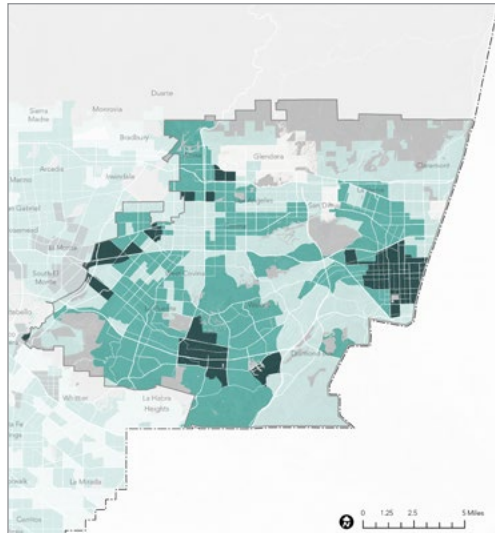
Source: Planning Area Framework, The Los Angeles County General Plan 2035.

2014 ACS 5-Year Estimate Subject t=Tables (<https://data.census.gov/cedsci/table?q=United%20States&g=0500000US06037%241400000&d=ACS%205-Year%20Estimates%20Subject%20Tables>)

Note: At the time that this report was prepared, 2020 Census results were not available.

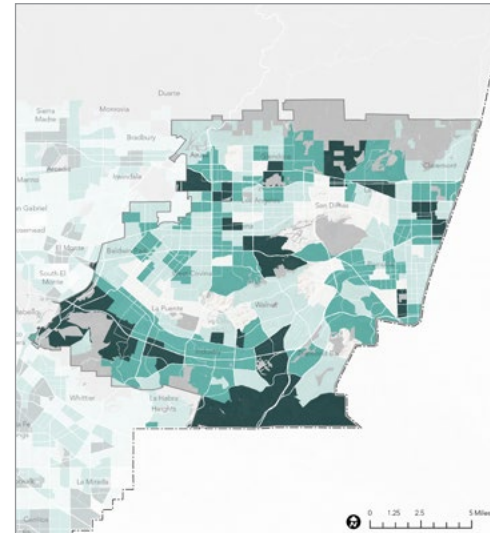
POPULATION VULNERABILITY DIMENSIONS

Social Barriers Dimension



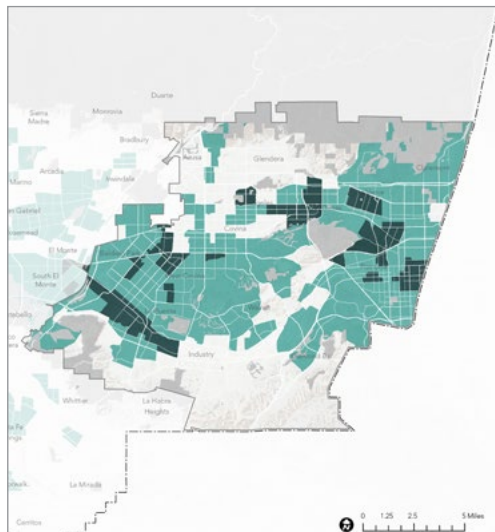
- Indicators:
- » High Poverty Rate
 - » High Unemployment Rate
 - » Majority-Minority Population
 - » High % of Young Children
 - » High % of Elderly Residents
 - » High % of Non-English-Speaking Residents
 - » Low % of Two-Parent Households

Transportation Barriers Dimension



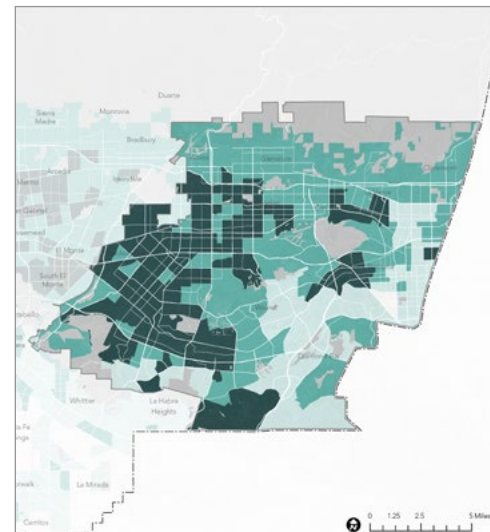
- Indicators:
- » Low Automobile Access
 - » Low Public Transit Access
 - » Low Active Commuting Rate
 - » High Traffic Density
 - » High Pedestrian Injuries

Health Vulnerability Dimension

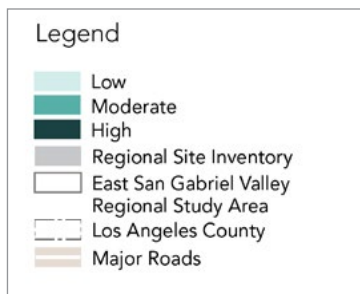


- Indicators:
- » Low Park Access
 - » Low Tree Canopy
 - » High % Impervious Surface
 - » High Number of Excessive Heat Days
 - » High Urban Heat Island Index Score

Environmental Vulnerability Dimension

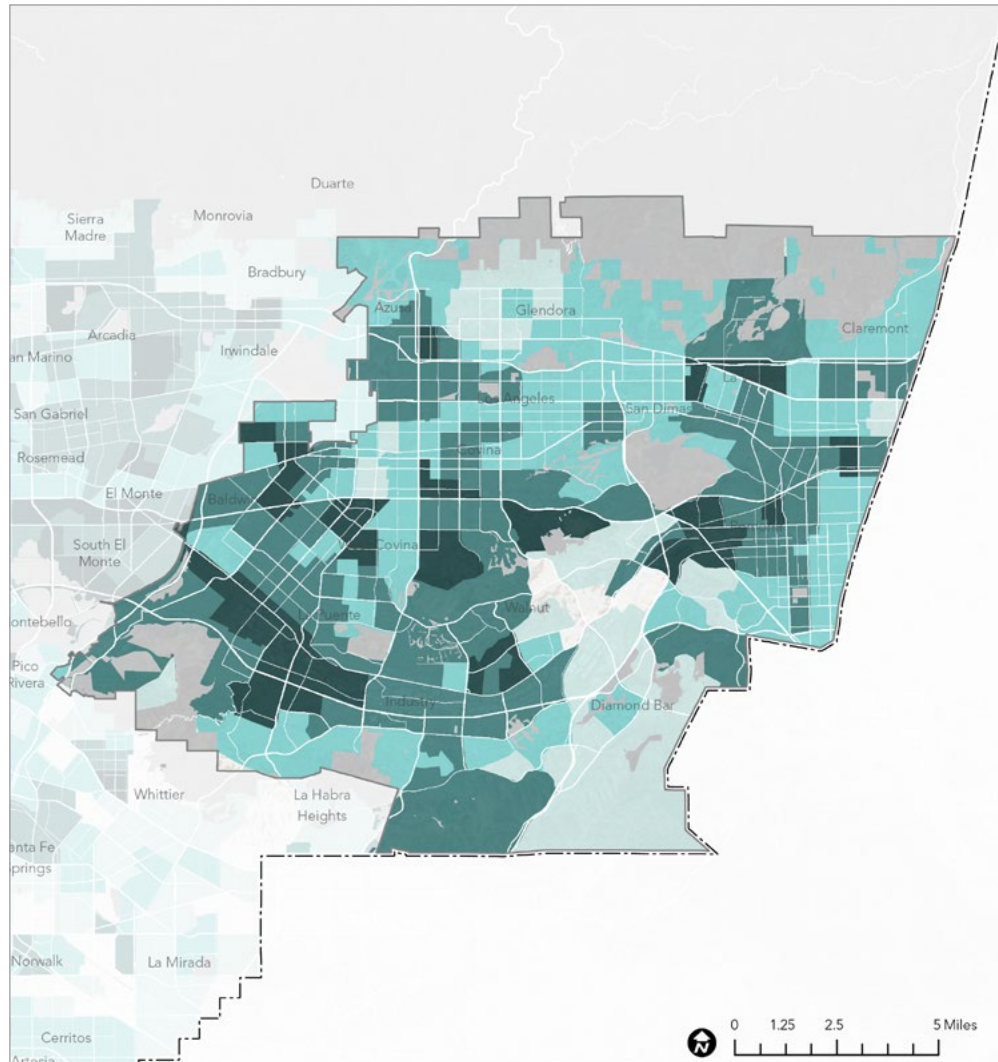


- Indicators:
- » Reduced Life Expectancy at Birth
 - » High Pollution Levels



Maps source: HPI, 2021; 2021 RRE Inventory

COMPOSITE POPULATION VULNERABILITY



Map source: HPI, 2021; 2021 RRE Inventory

Dimensions
of Population
Vulnerability

Social Barriers Dimension:

Prevalence of:

- » Young Children
- » Elderly
- » Non-English Speaking Residents
- » Single Parent Households
- » Poverty
- » Unemployment
- » Majority-Minority Population

Transportation Barriers Dimension:

- » Limited Active Commuting
- » Limited Automobile Access
- » Limited Public Transit Access
- » High Traffic Density
- » High Pedestrian Injuries

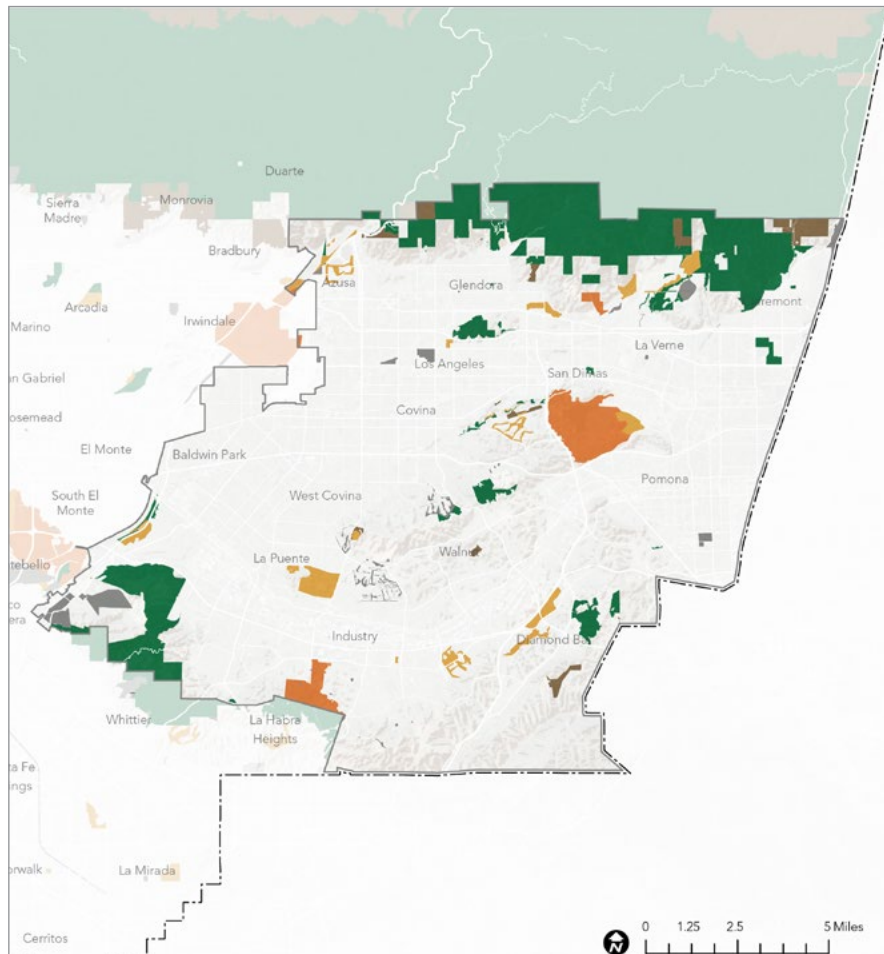
Health Vulnerability Dimension:

- » Reduced Life Expectancy at Birth
- » High Pollution Levels

Environmental Vulnerability Dimension:

- » Limited Park Access
- » Limited Tree Canopy
- » High % of Impervious Surface
- » High Excessive Heat Days
- » High Urban Heat Island Index Score

REGIONAL SITE INVENTORY



Map source: 2021 RRE Inventory



20,839

**TOTAL ACRES
OF REGIONAL
FACILITIES**



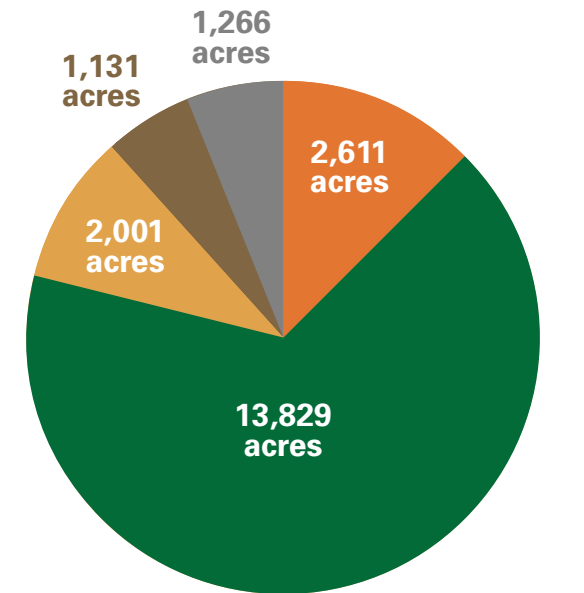
15%

**OF THE TOTAL
LAND AREA
IS REGIONAL
FACILITY LAND**



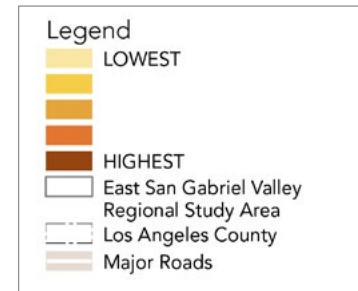
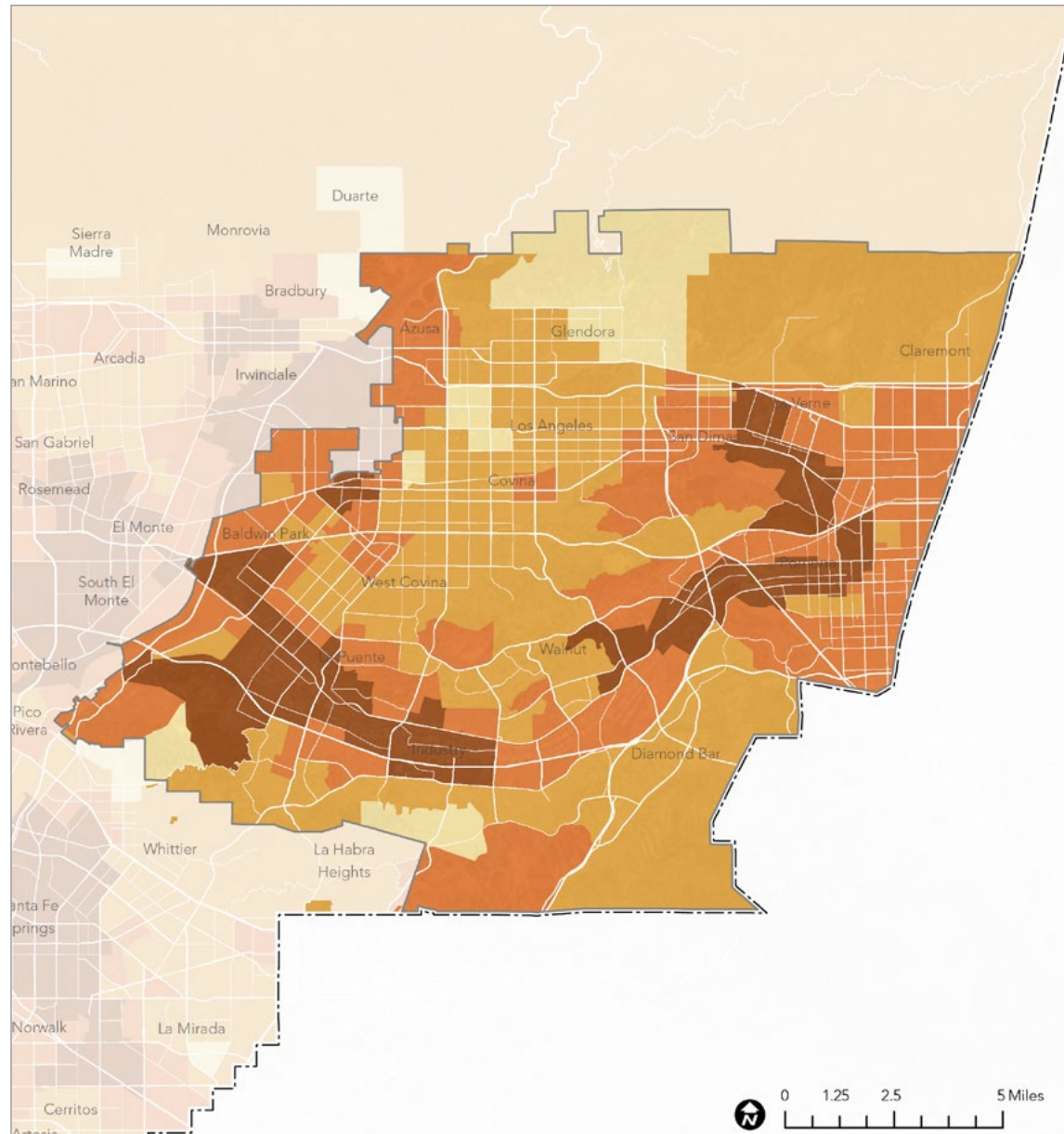
22

**ACRES OF
REGIONAL
FACILITY LAND
PER 1,000
RESIDENTS**



- REGIONAL RECREATION PARKS
- NATURE-BASED RECREATION AREAS
- REGIONAL SPECIALIZED RECREATION AREAS
- CONSERVATION AREAS
- OTHER PUBLIC AND SEMI-PUBLIC OPEN SPACE

ENVIRONMENTAL BURDENS



INDICATORS

Groundwater Threat. Groundwater threats come from many sources, including storage and disposal of hazardous materials on land and in underground storage tanks, dairy farms, concentrated animal-feeding operations, and water ponds generated for oil and gas development also pose threats to groundwater reserves.

Hazardous Waste. Hazardous waste facilities and generators pose widespread concerns for both human health and the environment from sites that serve to process or dispose of hazardous waste.

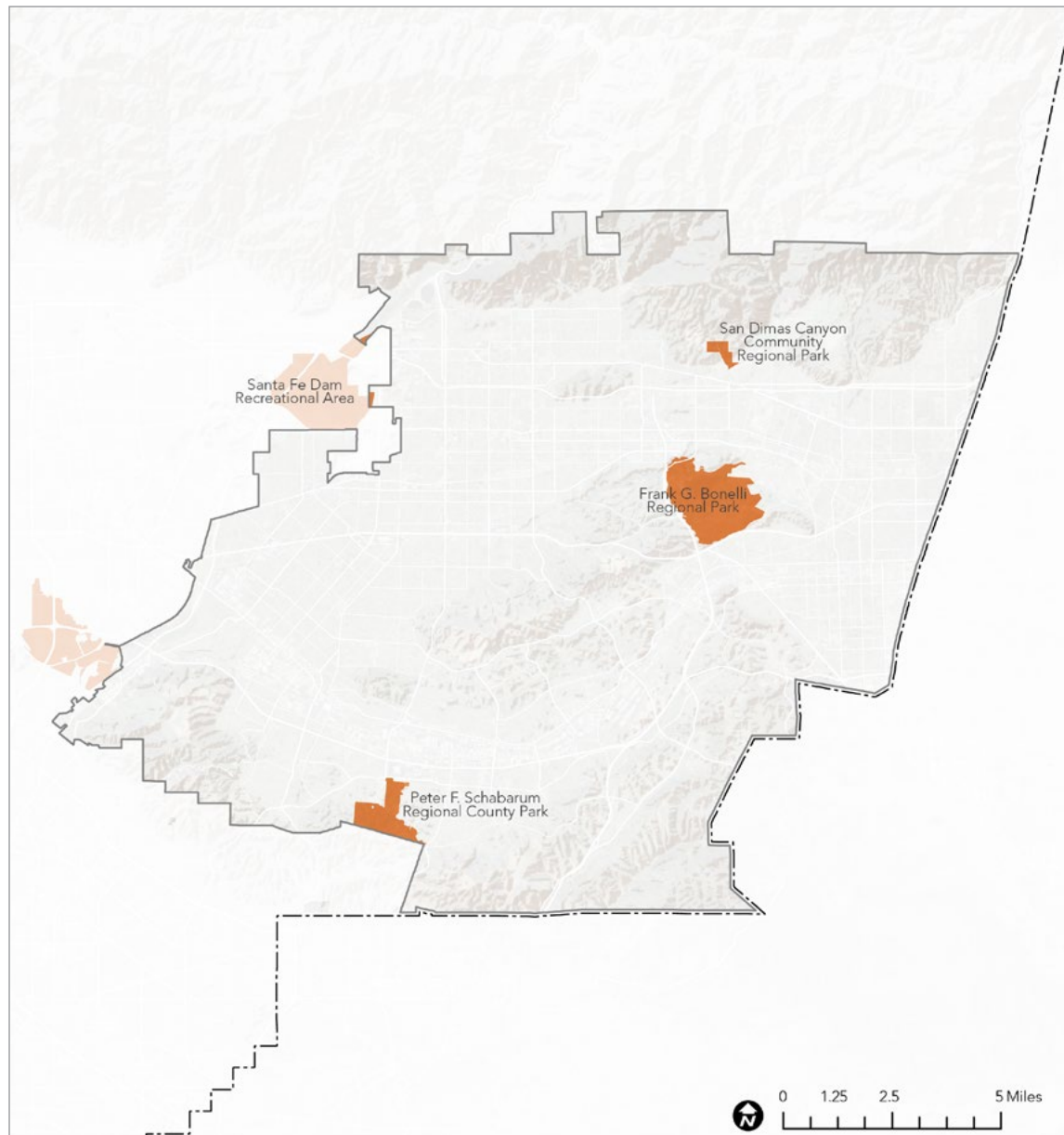
Drinking Water. Drinking water contaminants are introduced into drinking water sources in many ways, including natural occurrence, accidental discharge, industrial release, agricultural runoff and certain water disinfection methods.

PM2.5. Fine particulate matter (PM) that measures 2.5 microns or less in width represents a major contributor to air pollution and has been shown to cause significant adverse health effects, including heart and lung disease.

Pollution Burden. Pollution burden is composite indicator derived from seven exposure indicators (ozone and PM2.5 concentrations, diesel PM emissions, drinking water contaminants, children’s lead risk from housing, pesticide use, toxic releases from facilities, and traffic density) and five environmental effects indicators (cleanup sites, impaired water bodies, groundwater threats, hazardous waste facilities and generators, and solid waste sites and facilities).

Map source: CDFW ACE, 2021; USGS, 2021; COEHHA, 2021; CalFire FRAP 2015

REGIONAL RECREATION PARKS

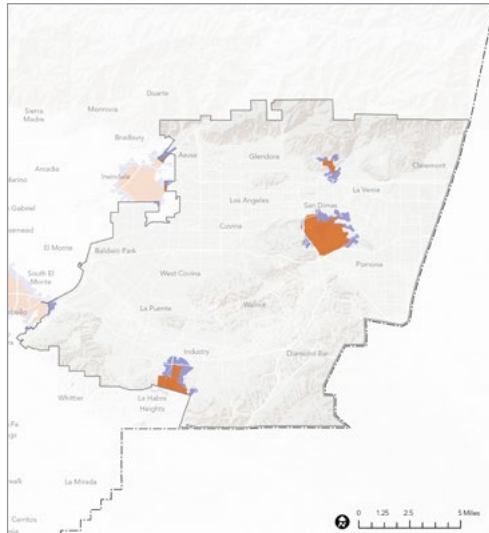


Map source: 2021 RRE Inventory



REGIONAL RECREATION PARK ACCESS

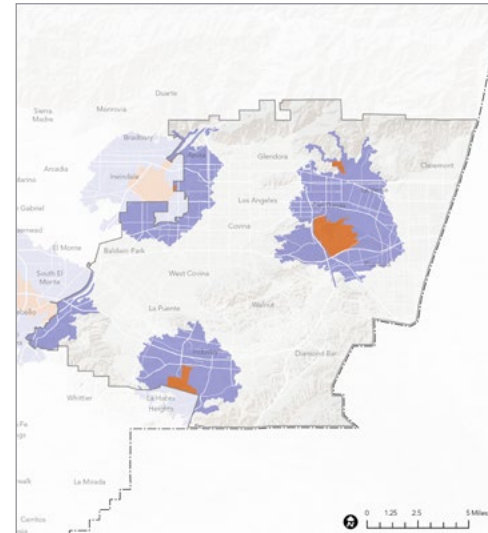
Walking Distance (0.5 miles from entry)



- Legend**
- Areas within a 0.5-mile walk of a Regional Recreation Park Entry
 - Regional Recreation Park
 - East San Gabriel Valley Regional Study Area
 - Los Angeles County
 - Major Roads

1% 
OF RESIDENTS LIVE WITHIN WALKING DISTANCE OF A REGIONAL RECREATION PARK

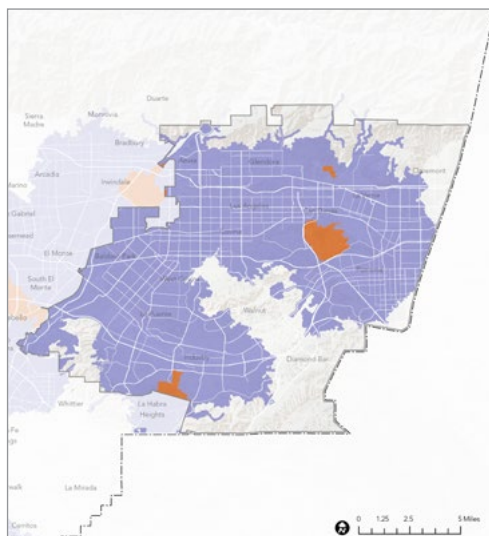
Cycling Distance (2.5 miles from entry)



- Legend**
- Areas within a 2.5-mile bicycle ride of a Regional Recreation Park Entry
 - Regional Recreation Park
 - East San Gabriel Valley Regional Study Area
 - Los Angeles County
 - Major Roads

27% 
OF RESIDENTS LIVE WITHIN CYCLING DISTANCE OF A REGIONAL RECREATION PARK

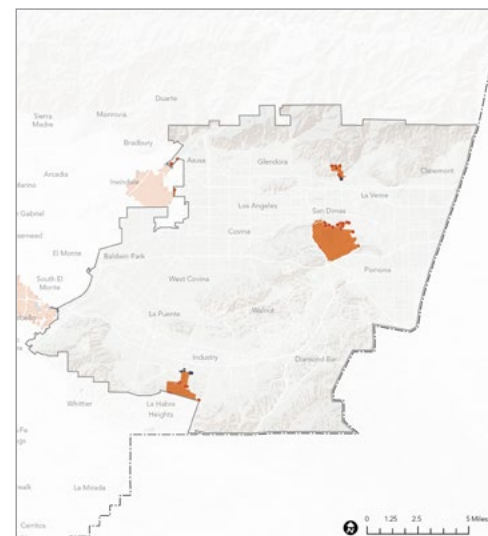
Driving Distance (5 miles from entry)



- Legend**
- Areas within a 5-mile drive of a Regional Recreation Park Entry
 - Regional Recreation Park
 - East San Gabriel Valley Regional Study Area
 - Los Angeles County
 - Major Roads

86% 
OF RESIDENTS LIVE WITHIN DRIVING DISTANCE OF A REGIONAL RECREATION PARK

Transit Service (entry is within 0.5 miles of transit stop)

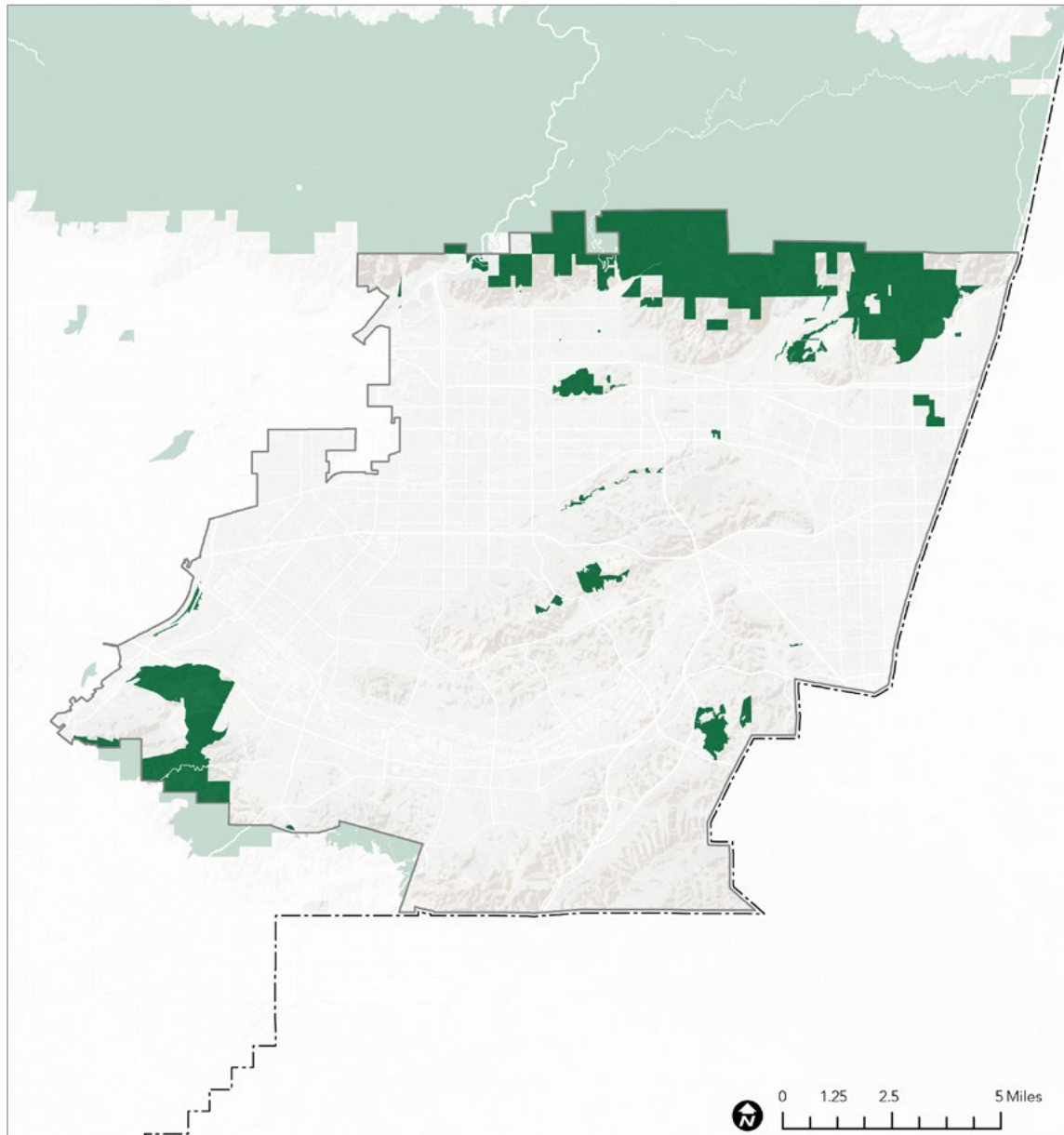


- Legend**
- Entry Point Served by Public Transit (located within a half mile of a Transit Stop)
 - Entry Point Not Served by Public Transit (not located within a half mile of a Transit Stop)
 - Regional Recreation Park
 - East San Gabriel Valley Regional Study Area
 - Los Angeles County
 - Major Roads

80% 
OF REGIONAL RECREATION PARK ENTRANCES ARE LOCATED WITHIN A HALF-MILE WALK OF A PUBLIC TRANSIT STOP

Maps source: ArcGIS StreetMap Premium, 2021; 2021 RRE Inventory

NATURE-BASED RECREATION AREAS



Map source: 2021 RRE Inventory



13,829

ACRES OF NATURE-BASED RECREATION AREA LAND

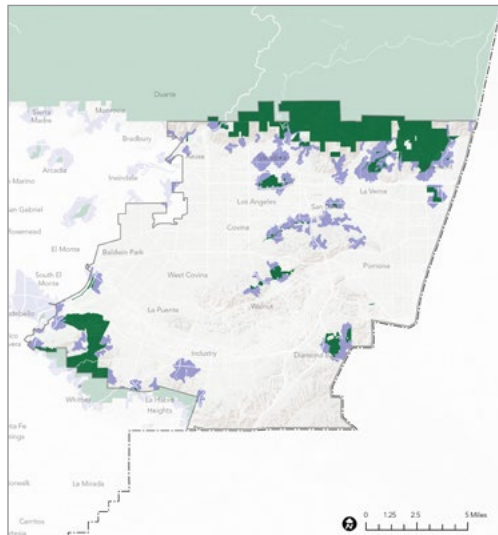


15

ACRES OF NATURE-BASED RECREATION AREA LAND PER 1,000 REGIONAL STUDY AREA RESIDENTS

NATURE-BASED RECREATION AREA ACCESS

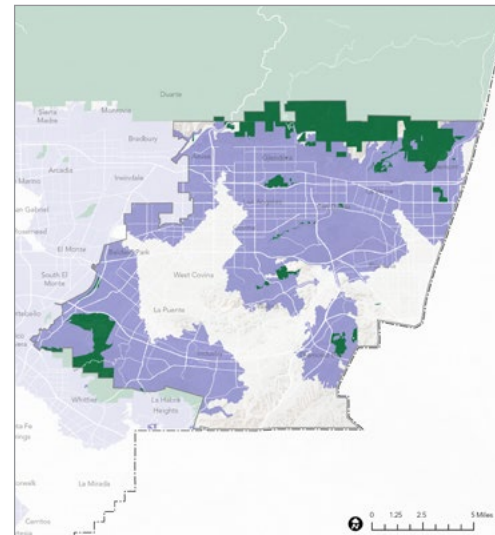
Walking Distance (0.5 miles from entry)



- Legend**
- Areas within a 0.5-mile walk of a Nature-Based Recreation Area Entry
 - Nature-Based Recreation Area
 - East San Gabriel Valley Regional Study Area
 - Los Angeles County
 - Major Roads

6% **OF STUDY AREA RESIDENTS LIVE WITHIN WALKING DISTANCE OF A NATURE-BASED RECREATION AREA**

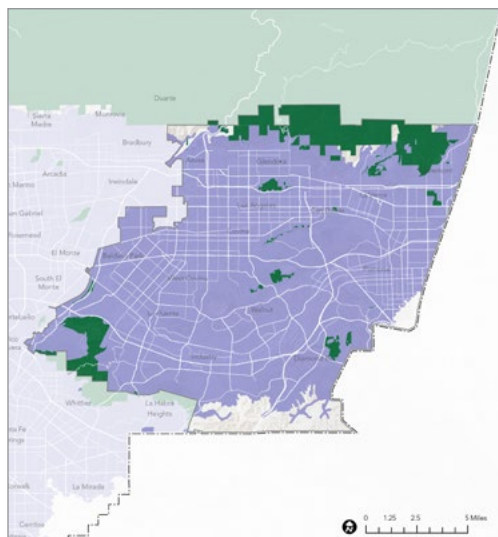
Cycling Distance (2.5 miles from entry)



- Legend**
- Areas within 2.5-mile bicycle ride of a Nature-Based Recreation Area Entry
 - Nature-Based Recreation Area
 - East San Gabriel Valley Regional Study Area
 - Los Angeles County
 - Major Roads

59% **OF STUDY AREA RESIDENTS LIVE WITHIN CYCLING DISTANCE OF A NATURE-BASED RECREATION AREA**

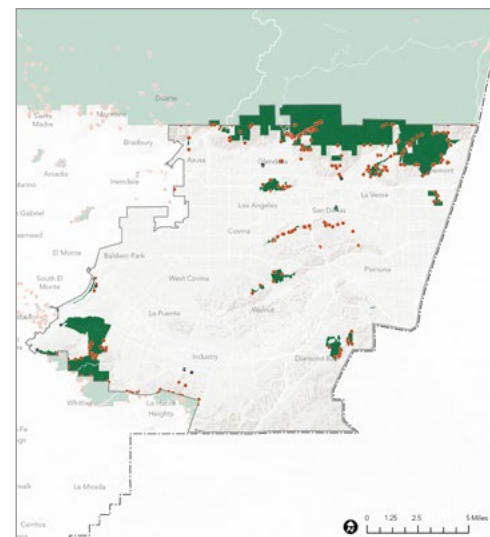
Driving Distance (5 miles from entry)



- Legend**
- Areas within a 5-mile drive of a Nature-Based Recreation Area Entry
 - Nature-Based Recreation Area
 - East San Gabriel Valley Regional Study Area
 - Los Angeles County
 - Major Roads

100% **OF STUDY AREA RESIDENTS LIVE WITHIN DRIVING DISTANCE OF A NATURE-BASED RECREATION AREA**

Transit Service (entry is within 0.5 miles of transit stop)



- Legend**
- Entry Point Served by Public Transit (located within a half mile of a Transit Stop)
 - Entry Point Not Served by Public Transit (not located within a half mile of a Transit Stop)
 - Nature-Based Recreation Area
 - East San Gabriel Valley Regional Study Area
 - Los Angeles County
 - Major Roads

9% **OF NATURE-BASED RECREATION AREA ENTRY POINTS AREA SERVED BY PUBLIC TRANSIT**

Maps source: ArcGIS StreetMap Premium, 2021; 2021 RRE Inventory

REGIONAL RECREATION AMENITIES



GATHERING SPACES



1
Group Picnic Areas



32
Individual Picnic Areas



4
Indoor Event Spaces



15
Outdoor Event Spaces



SPORTS FACILITIES



0
Shooting Ranges



0
Archery Ranges



1
Snowsport Facilities



TRAILS AND PATHWAYS



0
Rock Climbing Areas



287
Trailheads



WATER-BASED RECREATION



5
Boating Areas



3
Swimming Areas



2
Watersport Facilities



5
Waterfront Access Areas



5
Fishing Areas



OVERNIGHT ACCOMMODATIONS



55
Tent Campsites



504
RV Campsites



EXPERIENTIAL LEARNING OPPORTUNITIES



8
Visitor Centers



5
Environmental Learning Facilities



2
Gardens



SUPPORT FACILITIES



6
Concessions



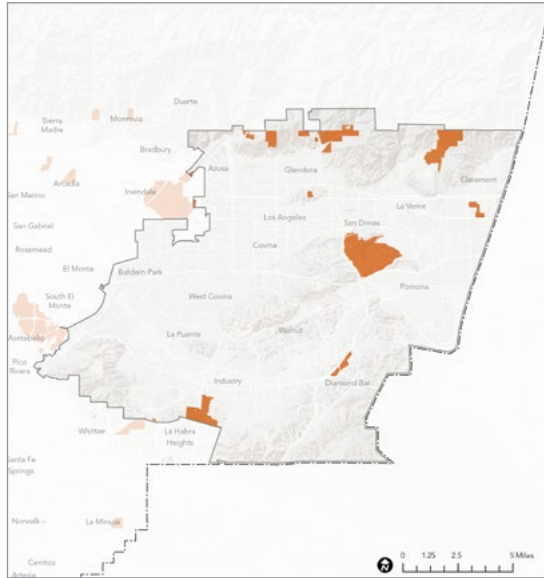
14,555
Parking Spaces



69
Restrooms

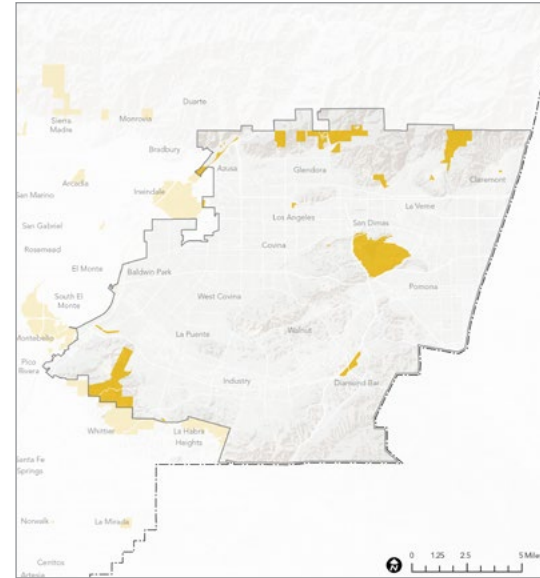
REGIONAL RECREATION OPPORTUNITY TYPES

Gathering Spaces



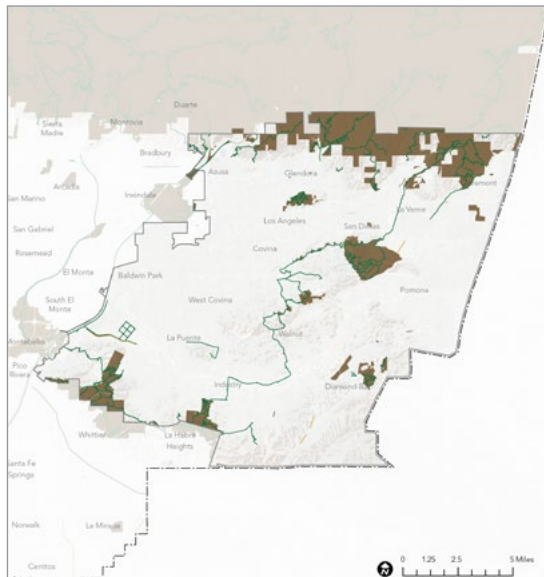
- Legend**
- Regional Sites with Gathering Spaces
 - East San Gabriel Valley Regional Study Area
 - Los Angeles County
 - Major Roads

Sports Facilities



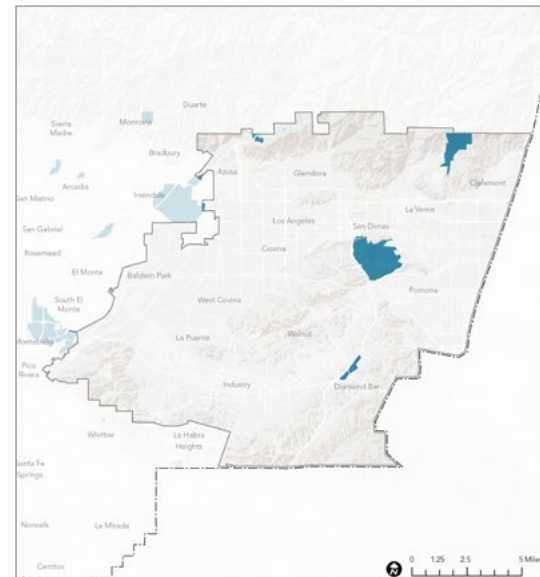
- Legend**
- Regional Sites with Sports Facilities
 - East San Gabriel Valley Regional Study Area
 - Los Angeles County
 - Major Roads

Trails and Pathways



- Legend**
- Regional Sites with Trails and Pathways
 - Regional Trails
 - Regional Bikeways
 - East San Gabriel Valley Regional Study Area
 - Los Angeles County
 - Major Roads

Water-Based Recreation

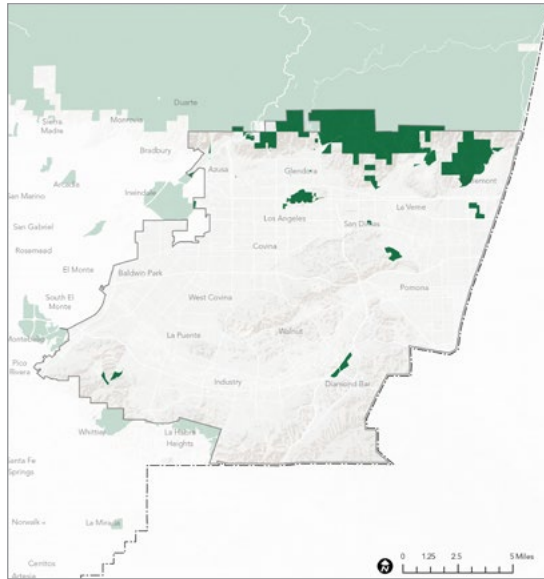


- Legend**
- Regional Sites with Water-Based Recreation
 - East San Gabriel Valley Regional Study Area
 - Los Angeles County
 - Major Roads

Maps source: 2021 RRE Inventory

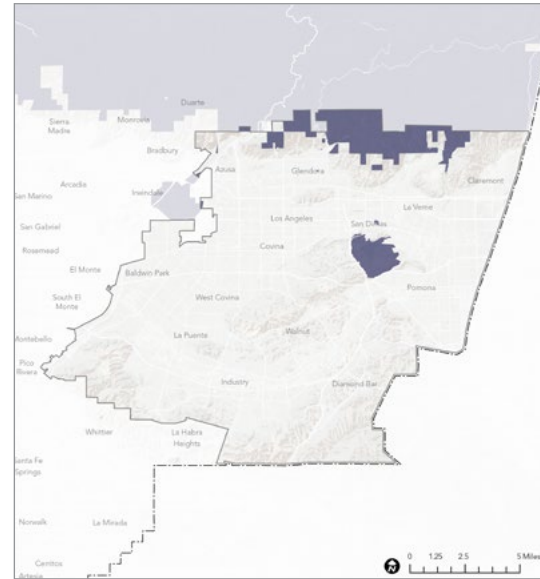
REGIONAL RECREATION AMENITY ANALYSIS

Experiential Learning Opportunities



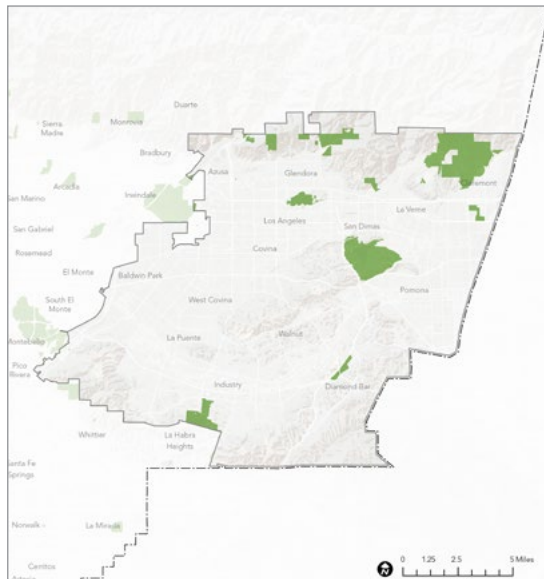
- Legend**
- Regional Sites with Experiential Learning Opportunities
 - East San Gabriel Valley Regional Study Area
 - Los Angeles County
 - Major Roads

Overnight Accommodations



- Legend**
- Regional Sites with Overnight Accommodations
 - East San Gabriel Valley Regional Study Area
 - Los Angeles County
 - Major Roads

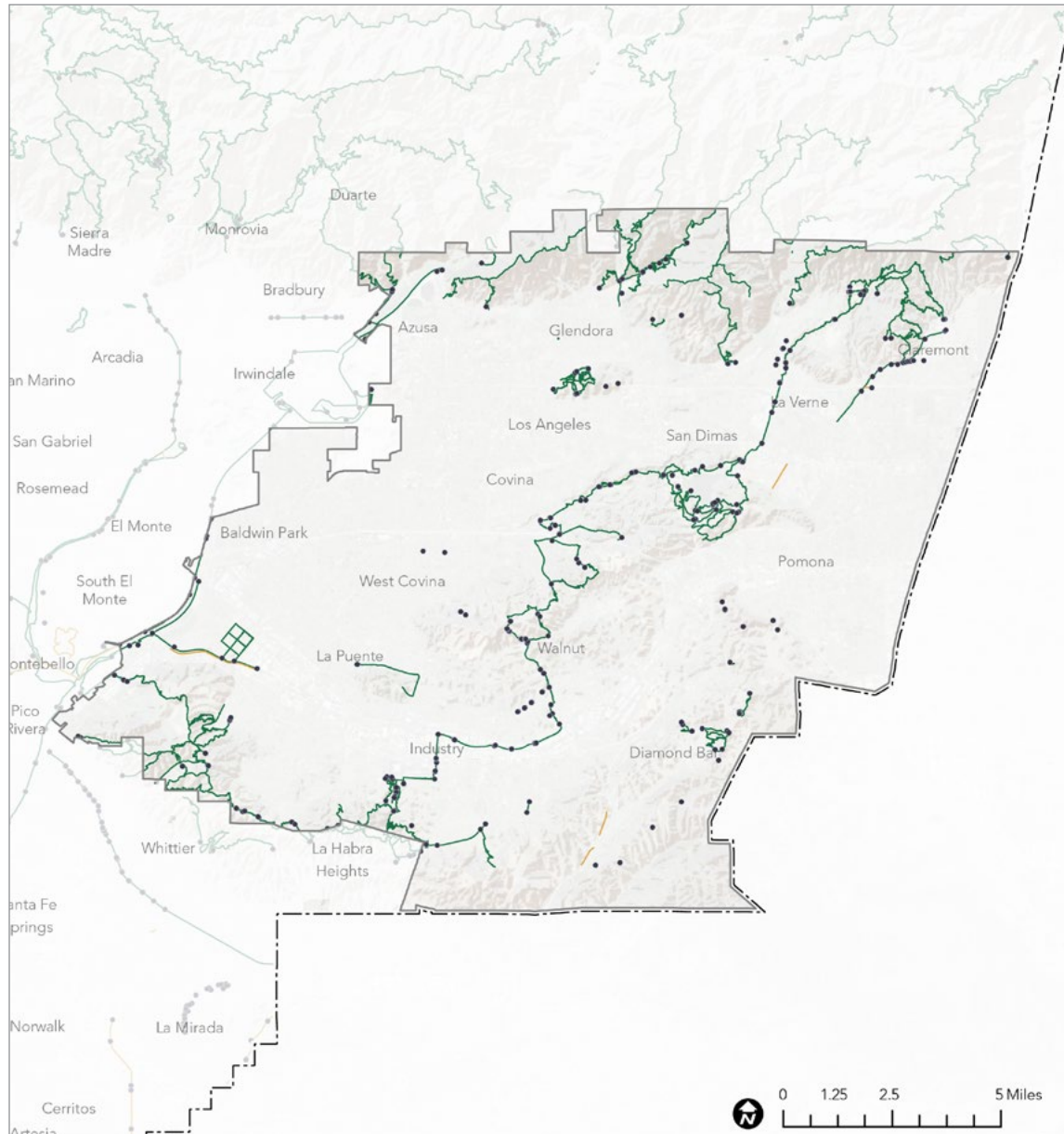
Support Facilities



- Legend**
- Regional Sites with Support Facilities
 - East San Gabriel Valley Regional Study Area
 - Los Angeles County
 - Major Roads

Maps source: 2021 RRE Inventory

REGIONAL TRAILS



Legend

- Regional Trails
- Regional Bikeways
- Trailheads and Access Points
- ▭ East San Gabriel Valley Regional Study Area
- - - Los Angeles County
- ▭ Major Roads

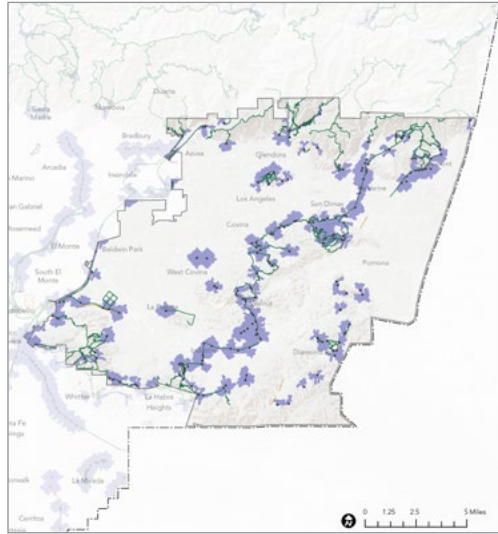
179
MILES OF REGIONAL TRAIL

0.19
MILES OF REGIONAL TRAIL PER 1,000 STUDY AREA RESIDENTS

Map source: LAC DPR, 2021; 2021 RRE Inventory

REGIONAL TRAIL ACCESS

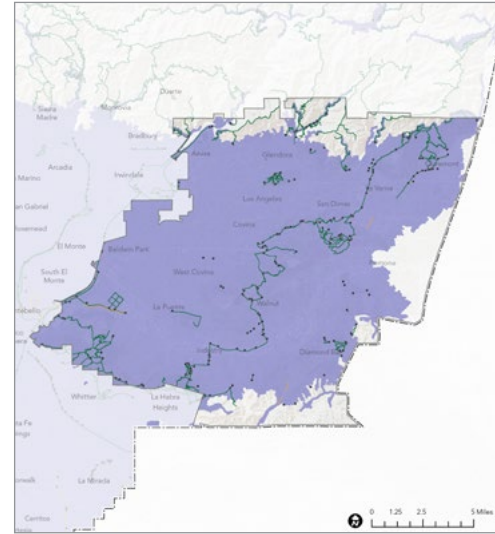
Walking Distance (0.5 miles from entry)



- Legend**
- Areas within a 0.5-mile walk of a Trailhead or Access Point
 - Regional Trails
 - Regional Bikeways
 - Trailheads and Access Points
 - East San Gabriel Valley Regional Study Area
 - Los Angeles County
 - Major Roads

12% **OF STUDY AREA RESIDENTS LIVE WITHIN WALKING DISTANCE OF A TRAILHEAD**

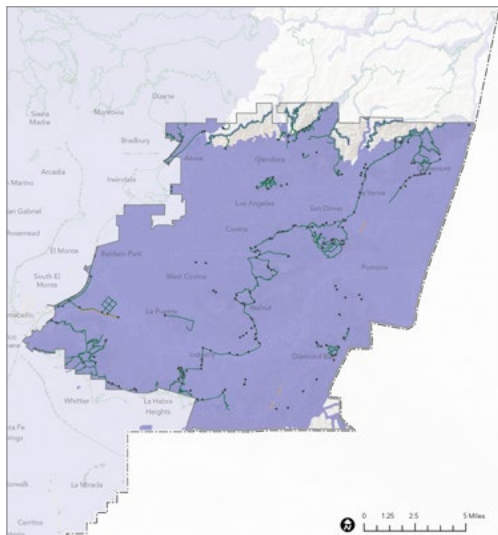
Cycling Distance (2.5 miles from entry)



- Legend**
- Areas within a 2.5-mile bicycle ride of a Trailhead or Access Point
 - Regional Trails
 - Regional Bikeways
 - Trailheads and Access Points
 - East San Gabriel Valley Regional Study Area
 - Los Angeles County
 - Major Roads

92% **OF STUDY AREA RESIDENTS LIVE WITHIN CYCLING DISTANCE OF A TRAILHEAD**

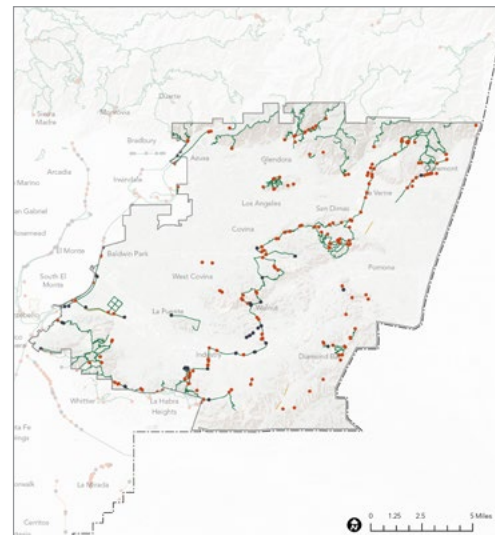
Driving Distance (5 miles from entry)



- Legend**
- Areas within a 5-mile drive of a Trailhead or Access Point
 - Regional Trails
 - Regional Bikeways
 - Trailheads and Access Points
 - East San Gabriel Valley Regional Study Area
 - Los Angeles County
 - Major Roads

100% **OF STUDY AREA RESIDENTS LIVE WITHIN DRIVING DISTANCE OF A TRAILHEAD**

Transit Service (entry is within 0.5 miles of transit stop)

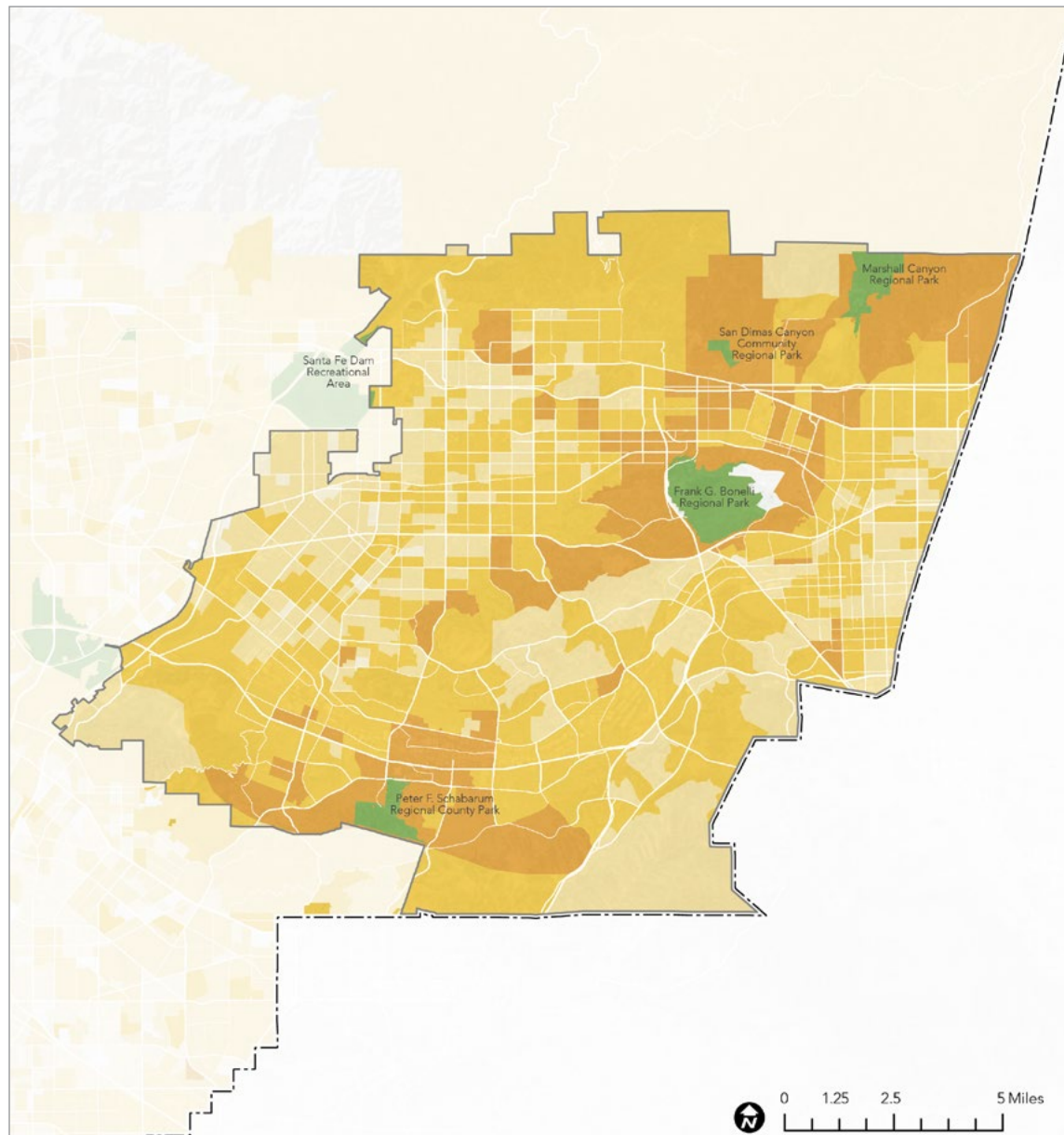


- Legend**
- Trailhead or Access Point Served by Public Transit (located within a half mile walk of a Transit Stop)
 - Trailhead or Access Point Not Served by Public Transit (not located within a half mile walk of a Transit Stop)
 - Regional Trails
 - Regional Bikeways
 - East San Gabriel Valley Regional Study Area
 - Los Angeles County
 - Major Roads

18% **OF TRAILHEADS ARE SERVED BY PUBLIC TRANSIT**

Maps source: LAC DPR, 2021; ArcGIS StreetMap Premium, 2021; 2021 RRE Inventory

REGIONAL SITE VISITORSHIP



REGIONAL SITES INCLUDED IN VISITORSHIP ANALYSIS

- » Frank G. Bonelli Regional Park
- » Marshall Canyon Regional Park
- » Peter F. Schabarum Regional County Park
- » San Dimas Canyon Regional Park

Map source: Unacast, 2021; 2021 RRE Inventory

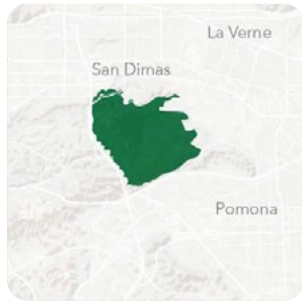
VISITORSHIP REPORT 2019 - 2020

Frank G. Bonelli Regional Park



VITAL STATISTICS

ANNUAL VISITORSHIP / VISITOR ORIGIN



KEY PARK AMENITIES

- Boating Areas
- Swim Beaches
- Camping Sites
- Children's Play Areas
- Concession Stands
- Equestrian Facilities
- Fishing Lakes
- Group Picnic Areas
- Hiking Trails
- Mountain Biking Trails
- Outdoor Performance Areas
- Softball Fields

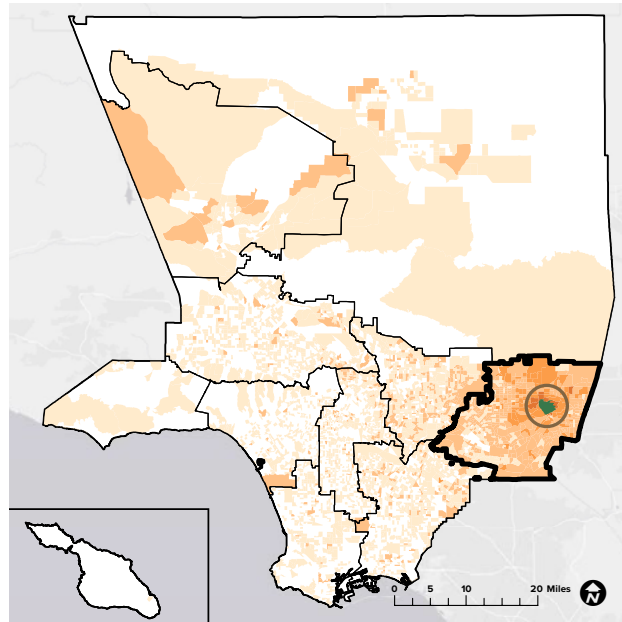
DESCRIPTION

Frank G. Bonelli Regional Park is a 1,800-acre facility with a 250-acre lake and 14 miles of multi-use trails. Located Northwest of Pomona and south of La Verne and San Dimas, visitors can enjoy recreational activities such as boating, jet skiing, camping, fishing, swimming, family and group picnicking, nature walks, hiking, jogging and biking. Concessionaires offering RV camping, hot tubs, wedding venues and horseback riding are also available for use. Yearly events include fishing tournaments, concerts, triathlons, water sports and cultural events.

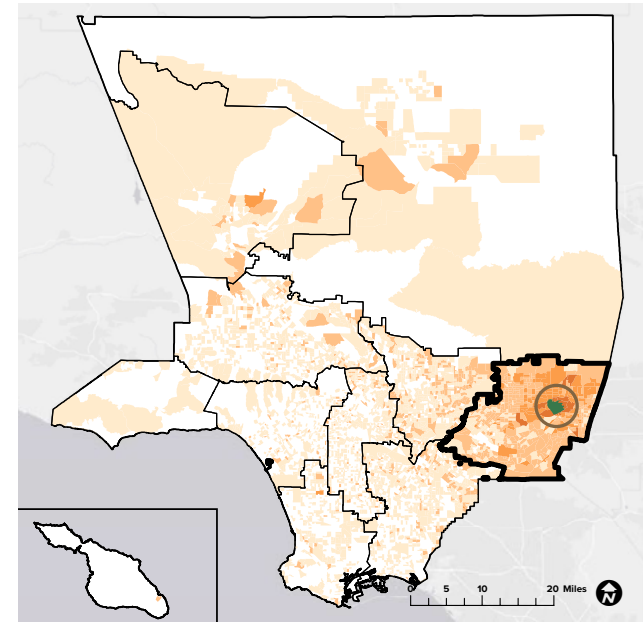
WEBSITE

www.parks.lacounty.gov/frank-g-bonelli-regional-park/

2019
1,252,542 visitors



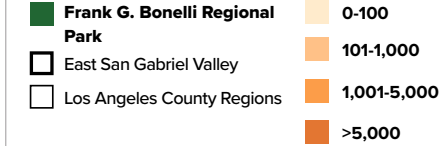
2020
1,138,505 visitors



55%
originated from within LA County

45%
originated from outside LA County

43%
originated from East San Gabriel Valley



61%
originated from within LA County

39%
originated from outside LA County

49%
originated from East San Gabriel Valley

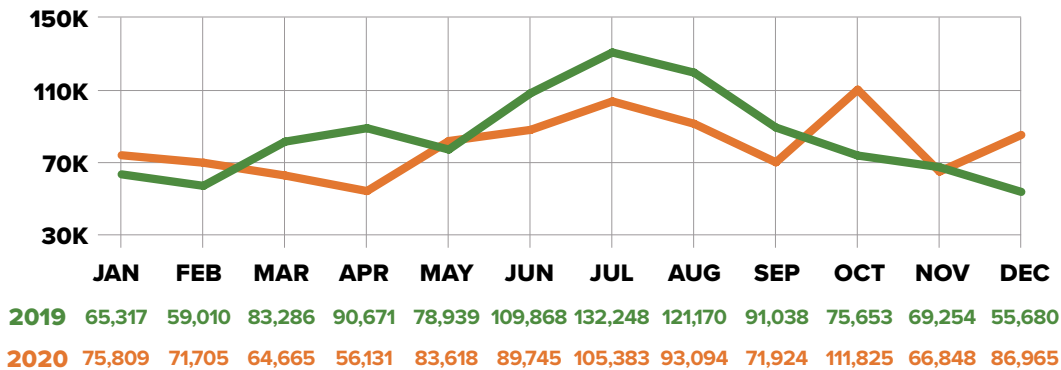
Sources: Unacast 2021 (LA County DPR 2020, LA County PNA 2016, ESRI 2021)

VISITORSHIP REPORT 2019 - 2020

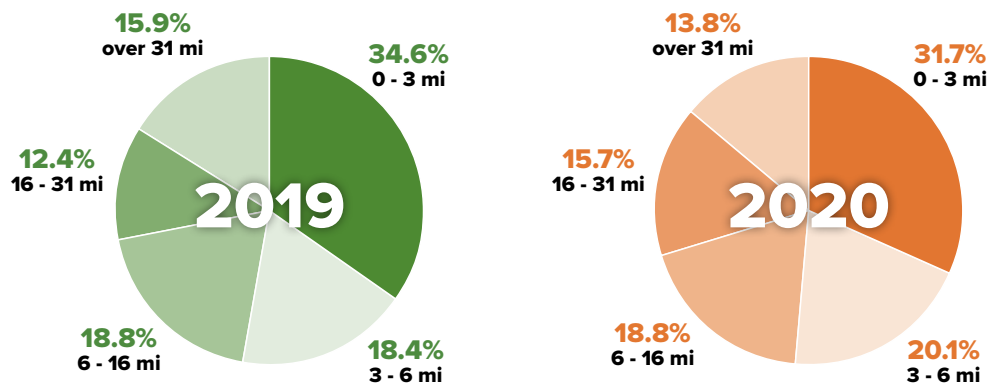
Frank G. Bonelli Regional Park



MONTHLY VISITORSHIP



TRAVEL DISTANCE



DEMOGRAPHICS

EDUCATION

	High School Diploma	Some College, No Degree	Associates Degree	Bachelors Degree	Masters Degree & Above
2019	13.0%	22.9%	8.2%	16.0%	7.6%
2020	13.6%	22.6%	8.3%	16.7%	7.8%

INCOME

	Less than \$24,999	\$25,000 - \$49,999	\$50,000 - \$74,999	\$75,000 - \$99,999	\$100,000 - \$124,999	More than \$125,000
2019	16.9%	12.3%	16.1%	10.2%	13.4%	30.8%
2020	15.4%	12.3%	16.5%	11.0%	13.4%	31.2%

GENDER IDENTITY

	Male	Female
2019	52.2%	47.7%
2020	51.8%	48.2%

RACE/ETHNICITY

	Amer-Indian	Asian	Black	Hispanic	White	2 or More	Other
2019	0.3%	11.7%	3.6%	45.7%	36.6%	1.7%	0.2%
2020	0.3%	12.3%	4.1%	45.0%	36.2%	1.8%	0.2%

AGE

	18-29	30-39	40-49	50-59	60-69	70-79	80+
2019	18.4%	20.6%	20.6%	16.2%	14.9%	5.8%	3.4%
2020	18.8%	19.5%	19.9%	16.8%	15.0%	6.2%	3.8%

VISITORSHIP REPORT 2019 - 2020

Marshall Canyon Regional Park



VITAL STATISTICS



KEY PARK AMENITIES

- Camping Sites
- Hiking Trails
- Biking Trails
- Equestrian Facilities
- Horseshoe Pits
- Group Picnic Areas

DESCRIPTION

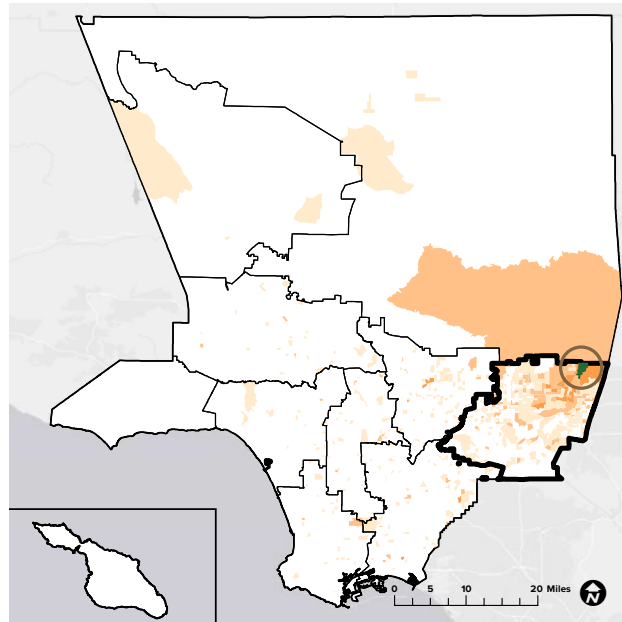
Marshall Canyon Regional Park is a 119-acre facility nestled in the foothills of La Verne. This facility offers recreational camping, gatherings, and hiking, with horseshoe pits, built-in barbeques, a sand volleyball court, a full-size stage, dance floor and circle fire pit. It also houses a tree nursery and The Fred M. Palmer Equestrian Center, which offers a full-size training arena, water troughs and individual horse corrals. The facility also offers trails for bird watching and mountain biking.

WEBSITE

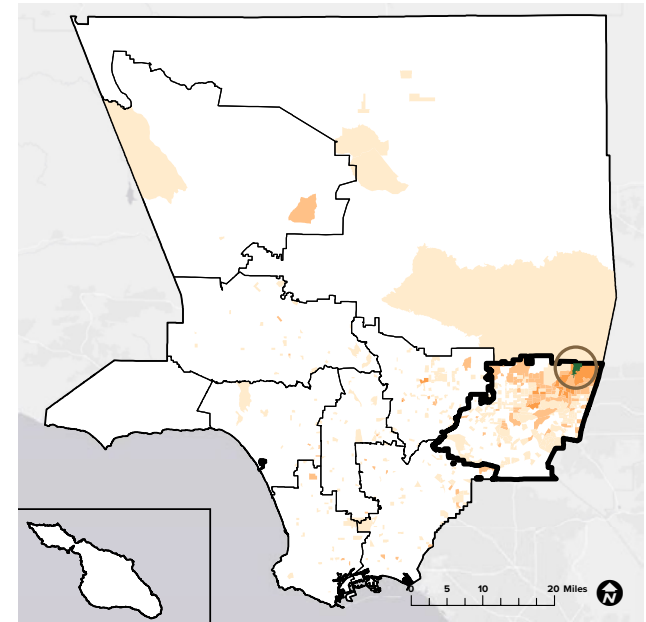
www.parks.lacounty.gov/marshall-canyon-regional-park/

ANNUAL VISITORSHIP / VISITOR ORIGIN

2019
98,648 visitors



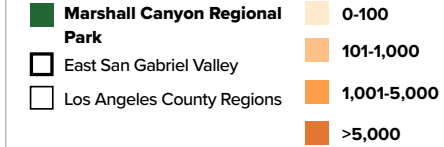
2020
103,350 visitors



69%
originated from within LA County

31%
originated from outside LA County

46%
originated from East San Gabriel Valley



69%
originated from within LA County

31%
originated from outside LA County

50%
originated from East San Gabriel Valley

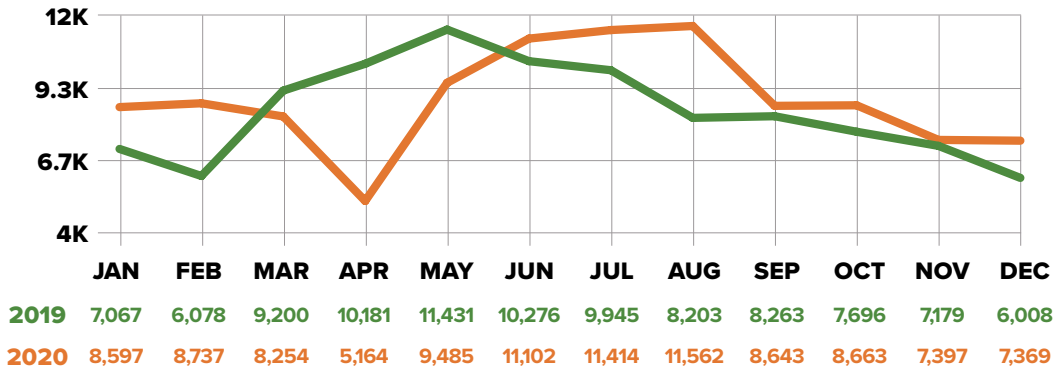
Sources: Unacast 2021 (LA County DPR 2020, LA County PNA 2016, ESRI 2021)

VISITORSHIP REPORT 2019 - 2020

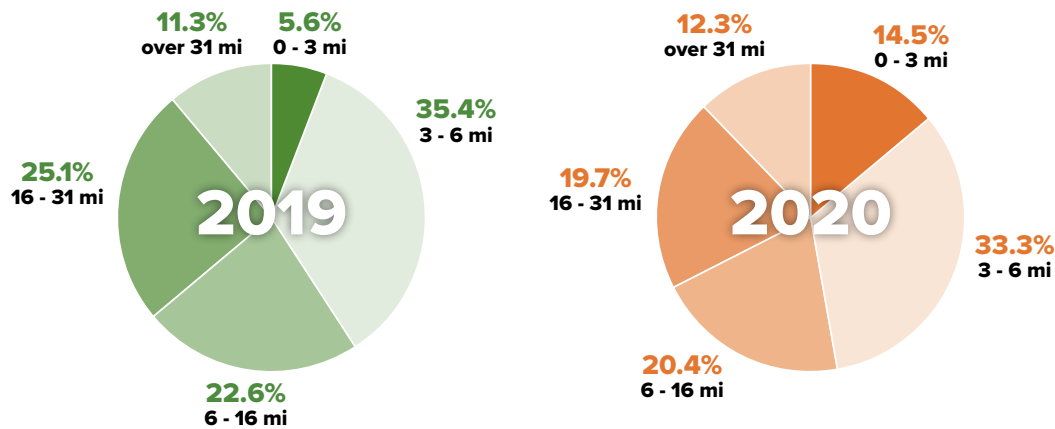
Marshall Canyon Regional Park



MONTHLY VISITORSHIP



TRAVEL DISTANCE



DEMOGRAPHICS

EDUCATION

	High School Diploma	Some College, No Degree	Associates Degree	Bachelors Degree	Masters Degree & Above
2019	15.3%	21.0%	7.0%	17.7%	7.7%
2020	14.8%	20.6%	8.3%	19.4%	8.5%

INCOME

	Less than \$24,999	\$25,000 - \$49,999	\$50,000 - \$74,999	\$75,000 - \$99,999	\$100,000 - \$124,999	More than \$125,000
2019	16.2%	13.2%	19.5%	13.4%	11.2%	26.5%
2020	14.5%	12.3%	18.4%	13.0%	12.6%	28.9%

GENDER IDENTITY

	Male	Female
2019	48.2%	51.8%
2020	47.7%	52.3%

RACE/ETHNICITY

	Amer-Indian	Asian	Black	Hispanic	White	2 or More	Other
2019	0.3%	17.6%	4.8%	37.4%	37.1%	2.3%	0.3%
2020	0.3%	16.0%	6.0%	37.2%	37.9%	2.1%	0.2%

AGE

	18-29	30-39	40-49	50-59	60-69	70-79	80+
2019	23.3%	15.6%	17.3%	17.4%	12.9%	8.2%	5.2%
2020	21.1%	15.2%	17.5%	18.4%	13.9%	8.5%	5.5%

VISITORSHIP REPORT 2019 - 2020

Peter F. Schabaram Regional County Park



VITAL STATISTICS

ANNUAL VISITORSHIP / VISITOR ORIGIN



KEY PARK AMENITIES

- Outdoor Performance Areas
- Camping Sites
- Children's Play Areas
- Equestrian Facilities
- Fitness Zones
- Group Picnic Areas
- Hiking Trails
- Biking Trails
- Soccer Fields
- Tennis Courts

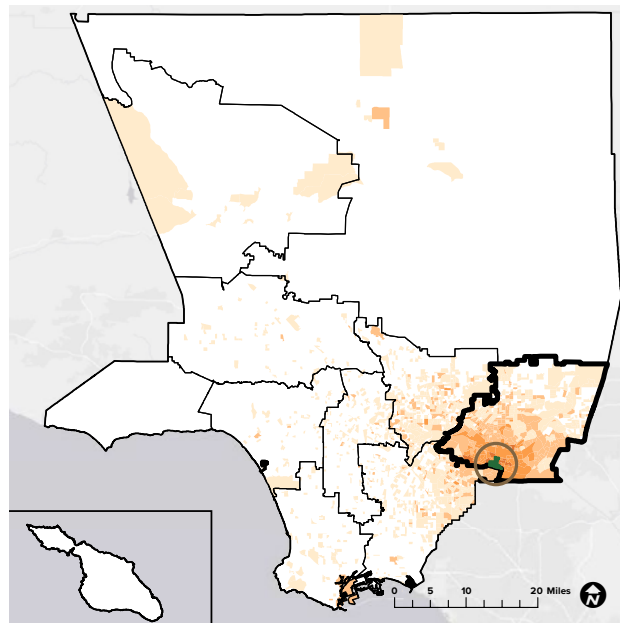
DESCRIPTION

Peter F. Schabaram Regional Park is a 575-acre park located in Rowland Heights. The park has over 75 acres developed for walking, hiking, picnics, youth camping and sports. Youth tennis lessons are offered year-round and exercise classes are free of charge. Visitors have access to an amphitheater, picnic areas, outdoor kitchens, nature and bird walks, and other areas designated for exercise and fitness. There is a federally protected blue-line stream and many acres of the park have been left in their natural state. Many of the hiking, biking and horseback riding trails connect to the historic Juan Bautista De Anza National Trail.

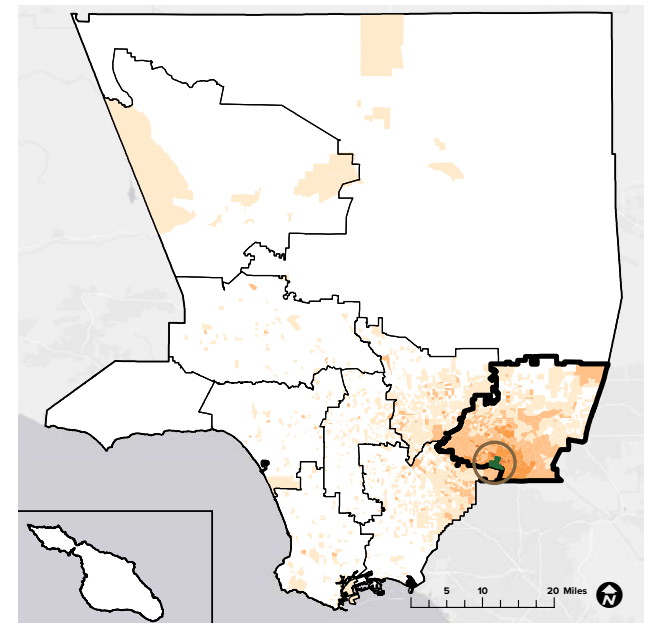
WEBSITE

www.parks.lacounty.gov/peter-f-schabaram-regional-county-park/

2019
389,656 visitors



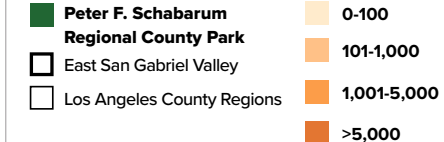
2020
325,631 visitors



83%
originated from within LA County

17%
originated from outside LA County

68%
originated from East San Gabriel Valley



83%
originated from within LA County

17%
originated from outside LA County

67%
originated from East San Gabriel Valley

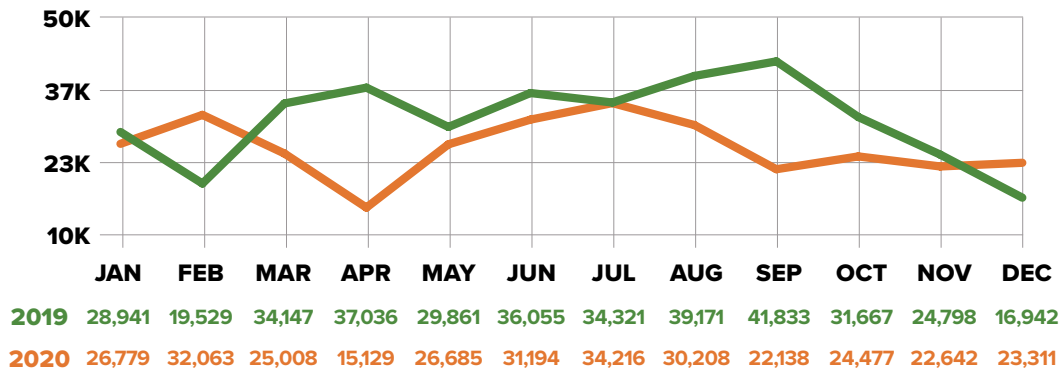
Sources: Unacast 2021 (LA County DPR 2020, LA County PNA 2016, ESRI 2021)

VISITORSHIP REPORT 2019 - 2020

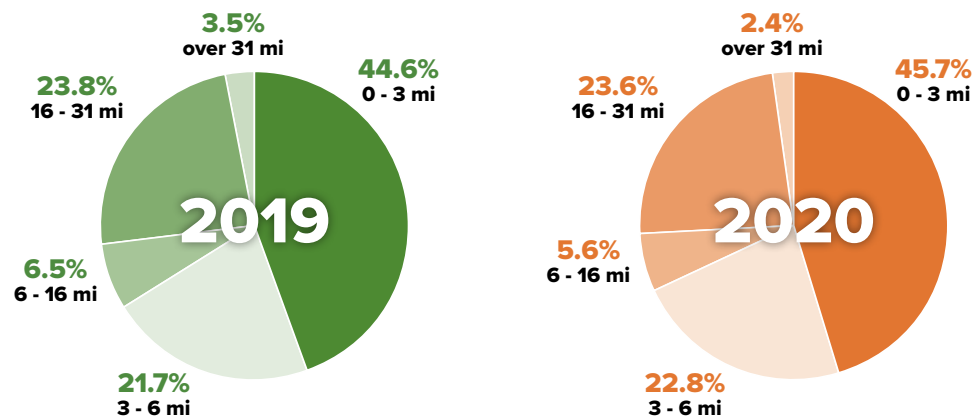
Peter F. Schabarum Regional County Park



MONTHLY VISITORSHIP



TRAVEL DISTANCE



DEMOGRAPHICS

EDUCATION

	High School Diploma	Some College, No Degree	Associates Degree	Bachelors Degree	Masters Degree & Above
2019	18.3%	17.2%	7.3%	19.9%	6.2%
2020	18.6%	16.4%	7.2%	20.0%	5.9%

INCOME

	Less than \$24,999	\$25,000 - \$49,999	\$50,000 - \$74,999	\$75,000 - \$99,999	\$100,000 - \$124,999	More than \$125,000
2019	15.7%	14.8%	21.1%	13.4%	10.1%	24.8%
2020	16.6%	16.9%	20.9%	12.9%	9.8%	22.9%

GENDER IDENTITY

	Male	Female
2019	48.7%	51.3%
2020	49.0%	51.0%

RACE/ETHNICITY

	Amer-Indian	Asian	Black	Hispanic	White	2 or More	Other
2019	0.2%	36.0%	2.2%	44.2%	15.6%	1.4%	0.2%
2020	0.2%	34.9%	2.2%	46.1%	14.8%	1.3%	0.2%

AGE

	18-29	30-39	40-49	50-59	60-69	70-79	80+
2019	21.0%	15.9%	17.6%	17.0%	14.7%	8.5%	5.3%
2020	21.9%	17.4%	17.3%	16.4%	14.3%	7.8%	4.9%

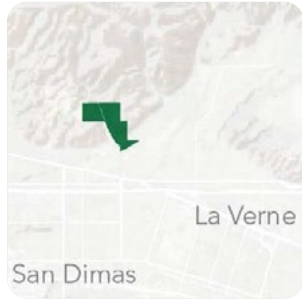
VISITORSHIP REPORT 2019 - 2020

San Dimas Canyon Community Regional Park



VITAL STATISTICS

ANNUAL VISITORSHIP / VISITOR ORIGIN



KEY PARK AMENITIES

- Animal Sanctuary and Museum
- Camping Sites
- Children's Play Areas
- Basketball Courts
- Hiking Trails
- Horseshoe Pits
- Picnic Areas
- Softball Fields

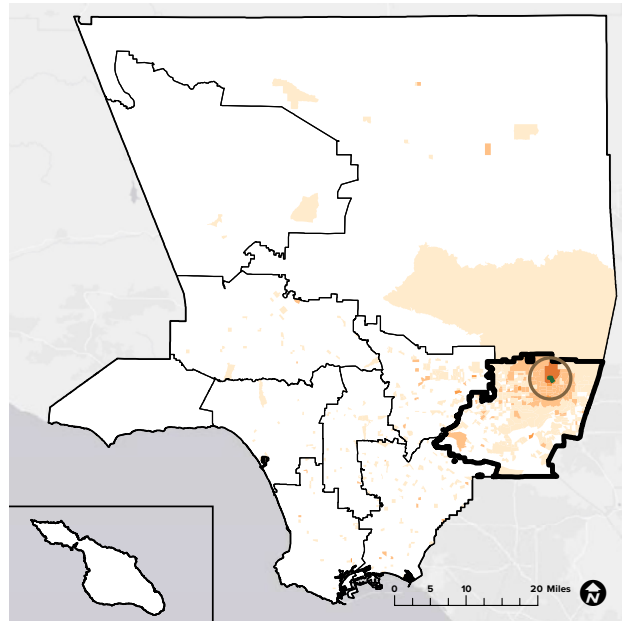
DESCRIPTION

The San Dimas Canyon Community Regional Park is located in the foothills of San Dimas. This natural area encompasses a total of 138 acres and offers visitors areas for camping, hiking and sports. There is an animal sanctuary, rehabilitation areas for birds of prey and a museum. Visitors have access to public restrooms, a campground, basketball courts, softball fields, horseshoe pits, picnic tables, and children's play areas.

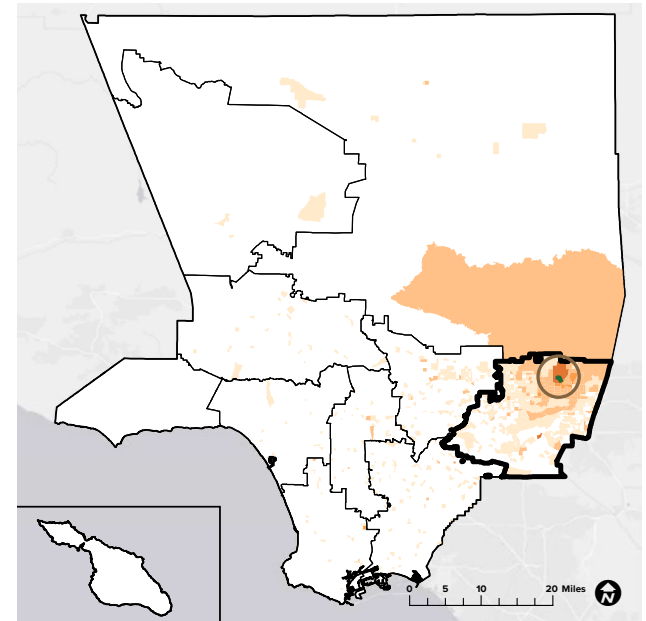
WEBSITE

www.parks.lacounty.gov/san-dimas-canyon-community-regional-park/

2019
97,142 visitors



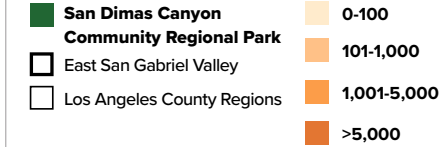
2020
87,676 visitors



69%
originated from within LA County

31%
originated from outside LA County

51%
originated from East San Gabriel Valley



71%
originated from within LA County

29%
originated from outside LA County

55%
originated from East San Gabriel Valley

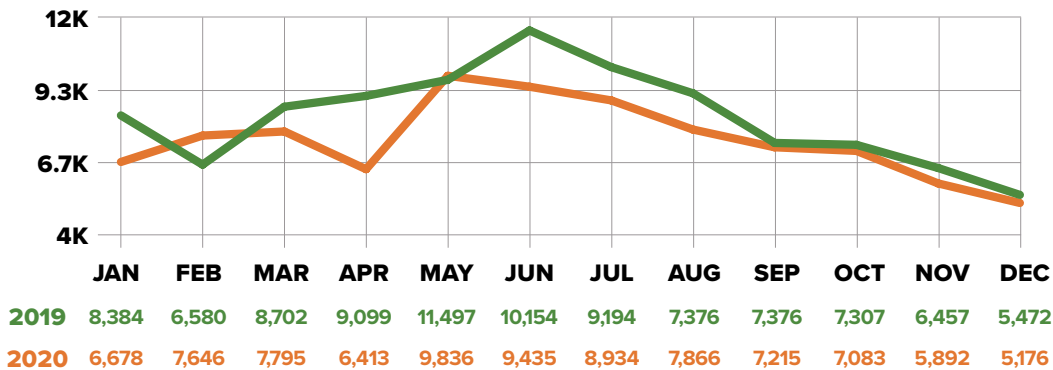
Sources: Unacast 2021 (LA County DPR 2020, LA County PNA 2016, ESRI 2021)

VISITORSHIP REPORT 2019 - 2020

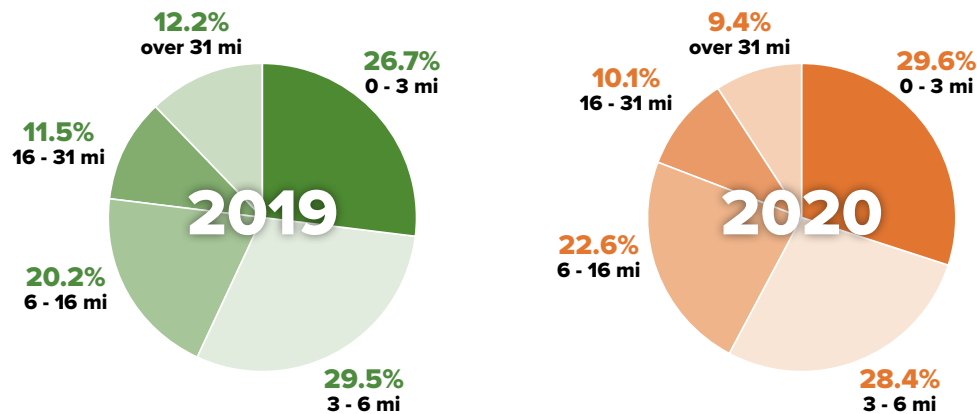
San Dimas Canyon Community Regional Park



MONTHLY VISITORSHIP



TRAVEL DISTANCE



DEMOGRAPHICS

EDUCATION

	High School Diploma	Some College, No Degree	Associates Degree	Bachelors Degree	Masters Degree & Above
2019	15.8%	20.0%	7.1%	17.7%	6.8%
2020	15.7%	20.4%	7.5%	18.1%	7.9%

INCOME

	Less than \$24,999	\$25,000 - \$49,999	\$50,000 - \$74,999	\$75,000 - \$99,999	\$100,000 - \$124,999	More than \$125,000
2019	17.3%	14.0%	18.5%	13.6%	11.5%	25.0%
2020	16.1%	13.2%	18.9%	13.4%	12.0%	26.4%

GENDER IDENTITY

	Male	Female
2019	49.0%	51.0%
2020	49.3%	50.7%

RACE/ETHNICITY

	Amer-Indian	Asian	Black	Hispanic	White	2 or More	Other
2019	0.4%	15.6%	6.5%	41.7%	33.6%	1.9%	0.2%
2020	0.3%	17.5%	6.9%	39.0%	33.4%	2.5%	0.2%

AGE

	18-29	30-39	40-49	50-59	60-69	70-79	80+
2019	23.1%	17.1%	16.7%	17.7%	13.8%	7.7%	4.0%
2020	22.2%	15.5%	17.2%	17.8%	14.4%	8.1%	4.7%

COMMUNITY ENGAGEMENT THEMES

BARRIERS RESIDENTS EXPERIENCE TO USING REGIONAL PARKS AND FACILITIES



HEAT

Heat and related pollution impacts make outdoor recreation activities difficult for many residents during warmer months of the year.



LACK OF SHADE

Without shade, many parks are unusable during hot months.



DISTANCE

Many park amenities are not available nearby.



LACK OF TRANSIT

Public transit to parks is limited and travel times are long. There are not many affordable options to reach amenities further away.



LIMITED PARKING

Not enough parking at trailheads, beaches, and at regional parks like Bonelli.



LACK OF INFORMATION

Residents do not know where parks are located, what facilities are available, or how to use and get to amenities.



SAFETY

Concerns about unhoused people in parks and along bike trails, as well as pandemic safety precautions at popular parks and trails.



NOT FEELING WELCOME

Many people of color are concerned about not feeling welcome and safe at parks and facilities.



LIMITED ADA AND SENIOR ACCESSIBILITY

Facilities are not accessible to disabled and older residents, many of whom do not have access to transportation to get to parks.



LACK OF CONNECTIVITY

Bike paths along waterways are not always open for use, and there are not enough trail networks or safe biking and pedestrian options.



NOT ENOUGH MAINTENANCE AT PARKS AND FACILITIES

Park areas and trails need repairs, maintenance and restoration.



LACK OF OUTDOOR RECREATION AREAS

Including trails, pet-friendly areas, campsites and affordable water-based recreation.

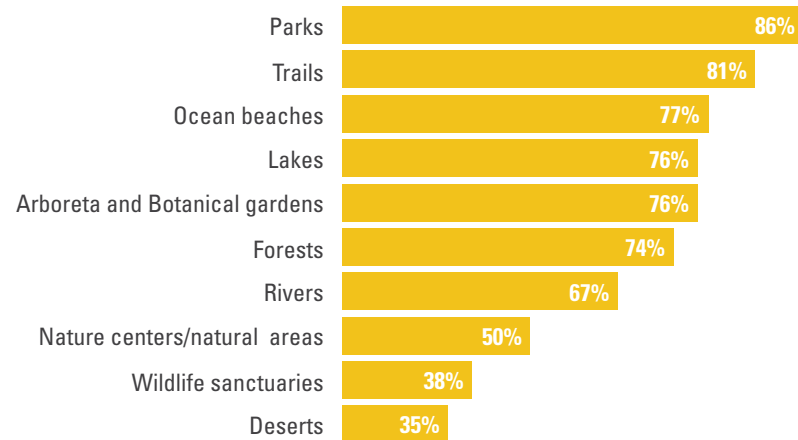
“Lack of parking at Mt. Baldy forces us to look for local hikes elsewhere.”

“Extreme heat has increasingly impacted the local environments and the way people experience nature. Extreme heat can deter residents from traveling to their local parks or green spaces.”

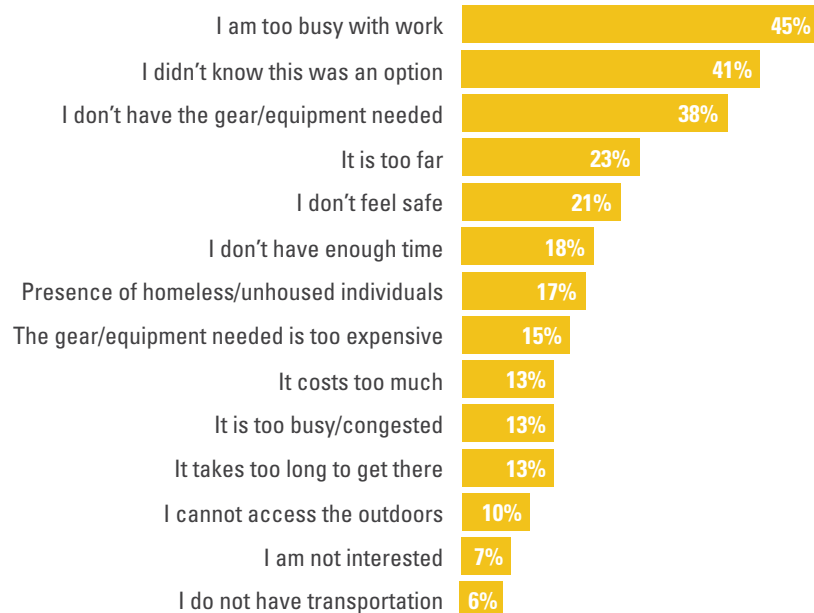
“Residents who travel outside of their city to access parks/ outdoor spaces are worried about the long commute time for public transportation, stating sometimes it can take hours to visit nearby recreational or natural areas.”

► Residents Regional Parks Use and Activities

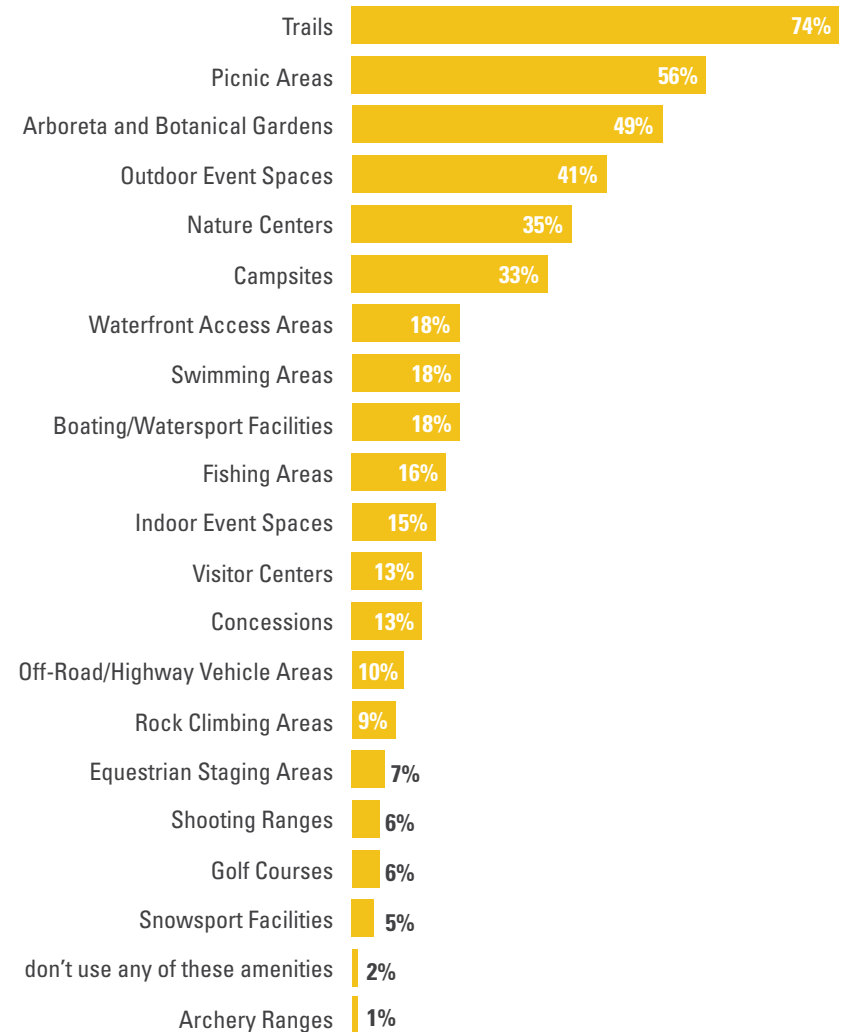
I visit these types of regional parks and facilities the most...



I can't go outside or to parks because...



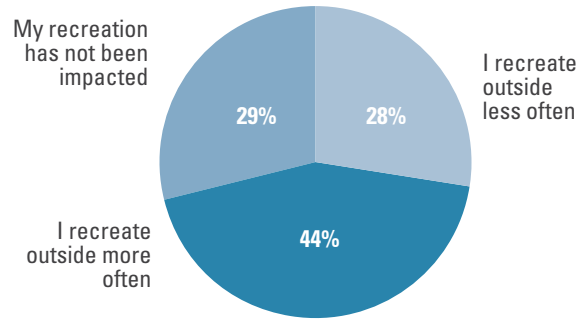
I use these regional park amenities most often:



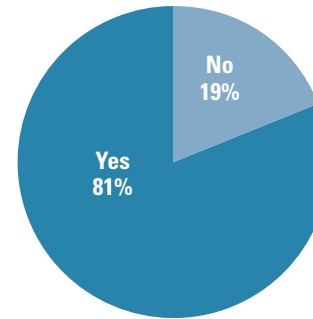
Appendix A | East San Gabriel Valley

► *Covid-19 Impacts on Recreation for Residents in the East San Gabriel Valley Region*

COVID has affected how I recreate...

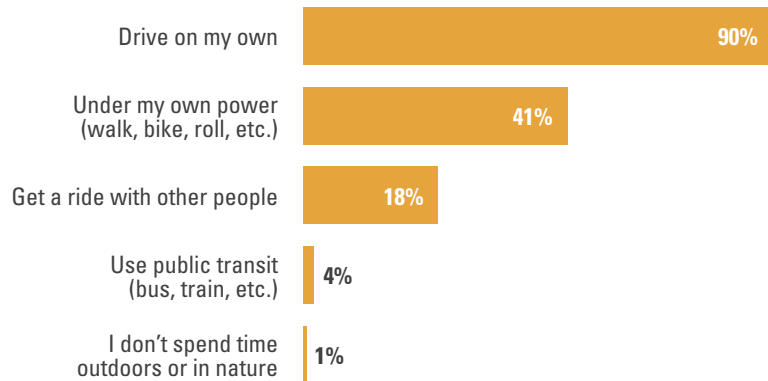


Because of COVID I am looking for recreation opportunities closer to home...

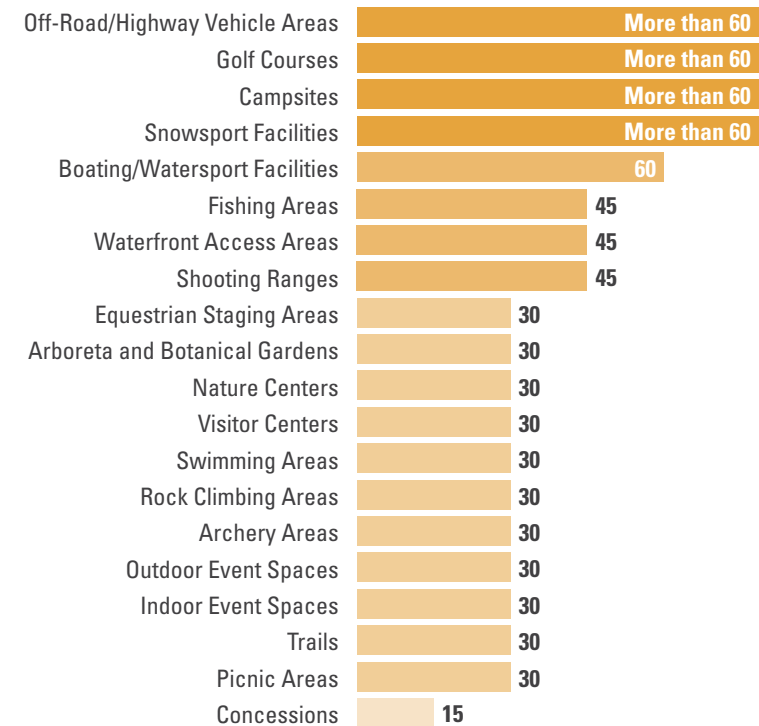


► *Travel to Parks*

When I travel to parks, these are all the ways I get there...

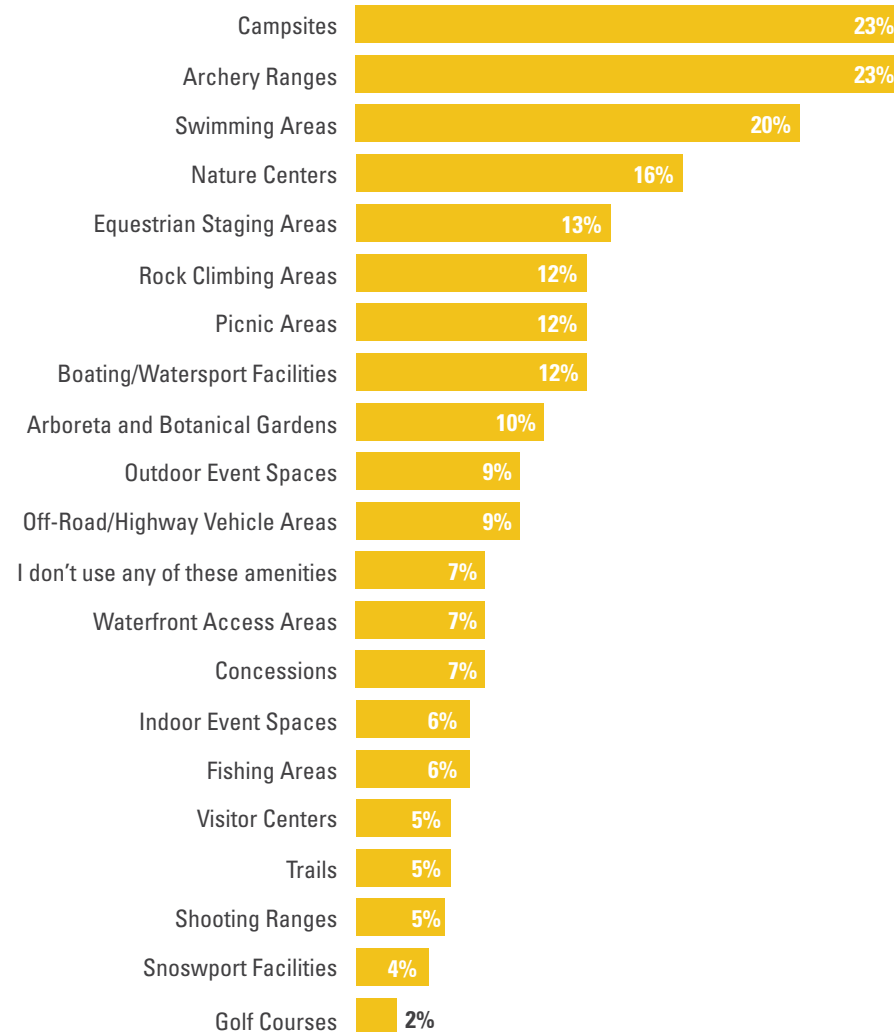


I'm willing to travel this many minutes to parks and amenities...



► *Regional Parks Needs in the East San Gabriel Valley Region*

The greatest parks needs in my community include...



► *Quality of Regional Park Amenities in the East San Gabriel Valley Region*

These amenities received the highest rate of good, fair or poor quality ratings from respondents...

Good

Archery Ranges	100%
Snowsport Facilities	75%
Arboreta and Botanical Gardens	70%
Trails	62%
Waterfront Access Areas	57%

Fair

Shooting Ranges	75%
Rock Climbing Areas	57%
Campsites	56%
Equestrian Staging Areas	50%
Outdoor Event Spaces	48%

Poor

Off-Road/Highway Vehicle Areas	63%
Equestrian Staging Areas	50%
Swimming Areas	47%
Nature Centers	31%
Rock Climbing Areas	29%
Waterfront Access Areas	29%

COMMUNITY ENGAGEMENT THEMES

COMMUNITY SUGGESTIONS TO INCREASE AND IMPROVE VISITS TO REGIONAL PARKS AND FACILITIES



MORE SHADE

More shade structures and trees in gathering and playground spaces and along trails.



ACCESS TO WATER

Water fountains for users and animals in parks and along trails, more splash pads and water features for cooling off, better access to lakes, rivers and streams in the area.



TRANSIT OPTIONS

Provide free and more frequent transit, including direct bus routes and shuttles, to ski areas, the beach and parks.



ENHANCED SAFETY MEASURES

Provide more lighting and ensure visitors are adhering to social distancing and other protective measures during the pandemic.



ADDRESS HOMELESSNESS

Expand services to support unhoused people who use parks.



BETTER ACCESS TO INFORMATION

More and multilingual information about events at regional parks, available amenities and opportunities to provide input.



IMPROVED SIGNAGE

Provide additional wayfinding, interpretive and multilingual signage in parks and along trails and ensure accessibility for users with limited vision.



ADA ACCESSIBILITY

Provide wheelchair and disabled accessible trails and facilities, including restrooms.



EXPAND NATIVE AMERICAN ACCESS AND EDUCATION

Provide access to ceremonial spaces for gatherings and events and provide spaces for indigenous-led education centers and activities.



EXPAND COMMUNITY EVENTS

Provide more outdoor spaces for concerts and events and open up park spaces for community use.



IMPROVED MAINTENANCE AND INFRASTRUCTURE

Clean and maintain restrooms, trails and campsites, and provide more picnic tables and seating.



ADDITIONAL STAFF

Hire more park guides and maintenance staff to take care of trails and park infrastructure.



BETTER ACCESS TO PROGRAMS

Improve and standardize the online reservation system, gather community input to improve the variety of recreation classes, and provide affordable equipment and classes for all ages, especially youth and seniors.



EXPAND CONCESSIONS

Allow local food vendors and set up more hydration locations in parks and facilities.



MORE RECREATION FACILITIES

Extend facilities hours, provide more outdoor equipment and build additional playgrounds, courts, skate areas and dog parks.



EXPAND TRAILS AND ACCESS

Provide more pedestrian, biking and equestrian trails near other facilities and activities.



ENHANCE CONNECTIVITY

Provide greenways and trail networks that connect communities to parks, trails and the watershed, and provide safe transportation corridors for bicyclists, equestrians and pedestrians.



EXPAND AND PRESERVE GREENSPACE

More trees, pocket parks, native habitat areas, community gardens, and natural open spaces.



PARTNERSHIPS WITH COMMUNITY ORGANIZATIONS AND SCHOOLS

Expand park use and greenspace access through community and school partnerships and make it easier for groups to register and use parks and facilities.

“Neighborhood parks in lower income neighborhoods should have water features for kids to play in. This is an inland area that gets very hot.”

“Bonelli should be more accessible for residents — particularly lower income residents in Pomona. There is no direct bus route to Bonelli — there are no bike lanes, etc.”

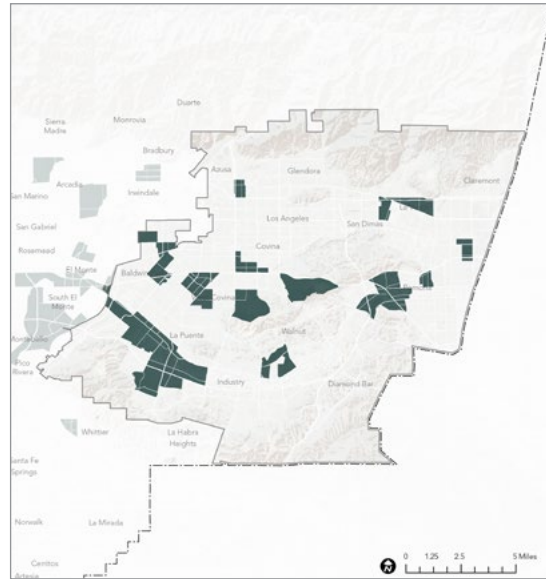
“We definitely need our parks in the Pomona valley to reflect and be more connected to the history of the indigenous people of this area... Many don’t know that this was Toibingna and Pemookanga which is Tongva land. We need to educate our communities on that history.”

More walking/hiking trails. People love to take advantage of this resource but there are not enough. Just placing corridors/walking areas in the middle of urban spaces would make such a huge difference as a public health initiative. An example of this is the walking path in Philips Ranch area.”

“I always go to the Santa Fe Dam recreation area for model rocket club launches. This is a very important activity for me and my two sons to teach them science and engineering. There are no other locations like this in LA County for model rocketry, I feel it would be a great loss for my family not to have access to this activity not only because of it is educational value but because it brings our family together to enjoy an activity we all can share safely.”



REGIONAL RECREATION PRIORITY ANALYSIS

Areas Experiencing the Highest Levels of Barriers and Vulnerability




Legend

- Areas of Moderate to High Vulnerability Across All Four Dimensions
- East San Gabriel Valley Regional Study Area
- Los Angeles County
- Major Roads

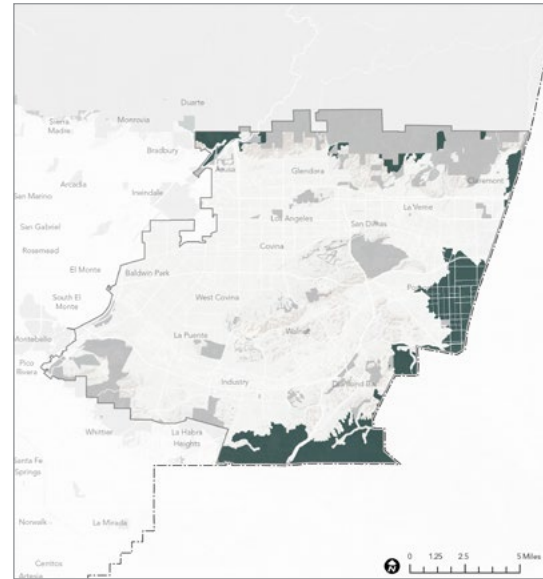
High Levels of Social and Transportation Barriers

+




High Levels of Health and Environmental Vulnerability

Areas Located in Low Proximity to Regional Recreation Sites



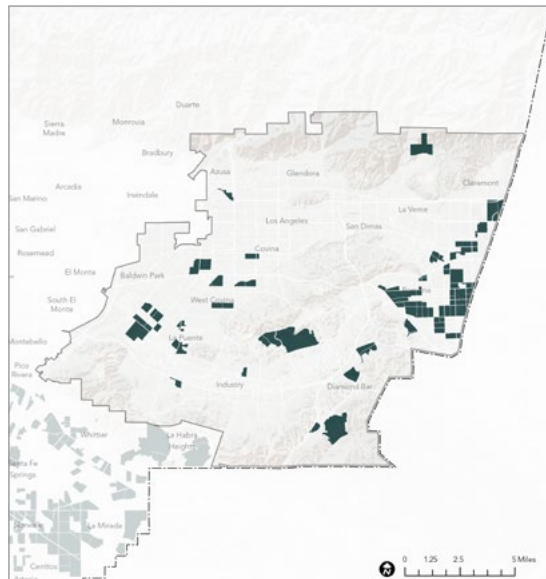
Legend

- Areas in Low Proximity to Regional Recreation Facilities (beyond a 2.5-mile bicycle ride to any Regional Recreation Park Entry Points, Nature-Based Recreation Area Entry Points or Trailheads and Access Points)
- Regional Site Inventory
- East San Gabriel Valley Regional Study Area
- Los Angeles County
- Major Roads



Low Proximity to Regional Recreation Sites

Areas With Low Visitorship Rates to Regional Recreation Sites



Legend

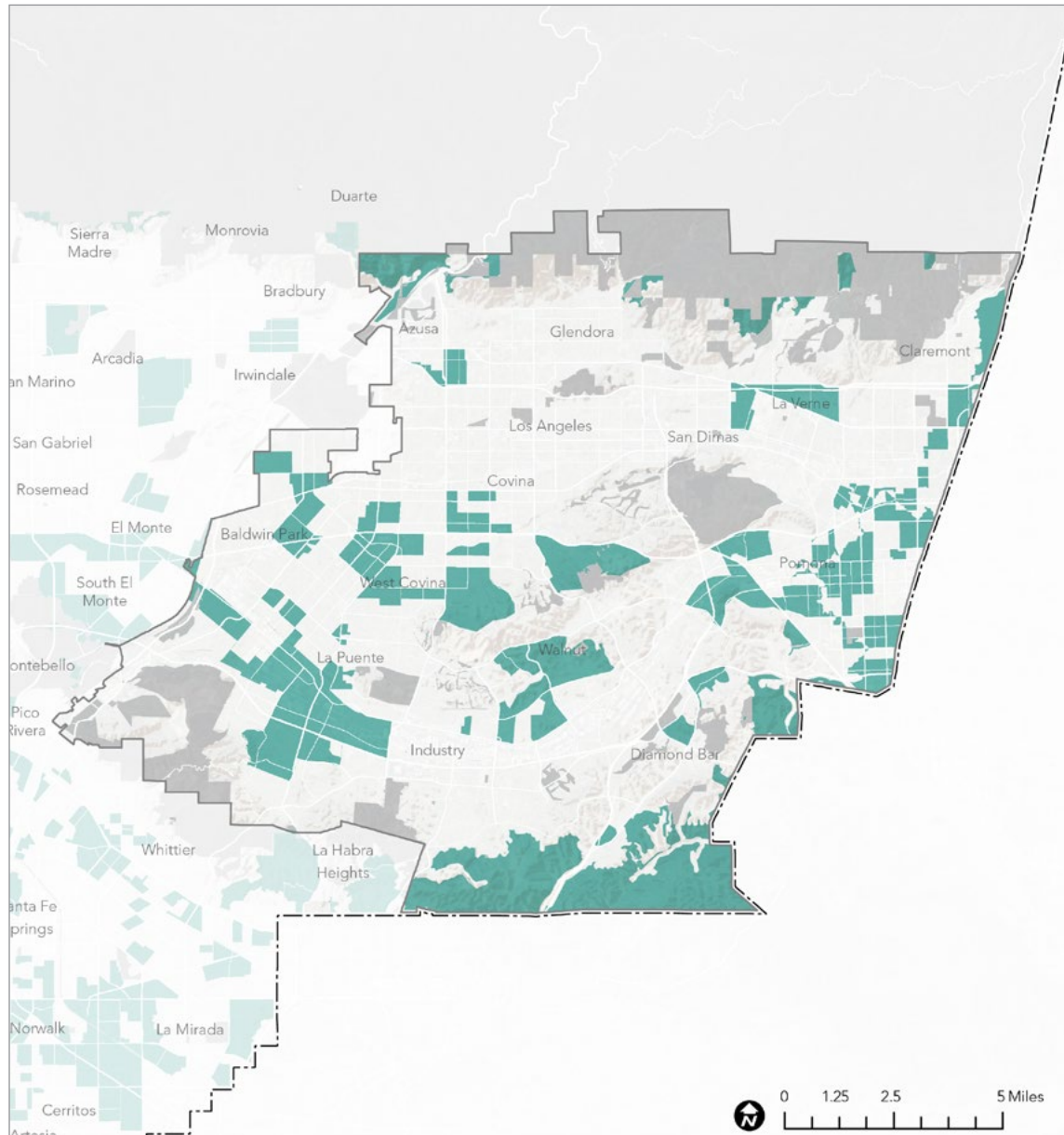
- Areas with Low Visitorship Rates (less than one observed visit per resident over the two-year period)
- East San Gabriel Valley Regional Study Area
- Los Angeles County
- Major Roads



Low Visitorship Rates to Regional Recreation Sites

Map source: Unacast, 2021; 2021 RRE Inventory

REGIONAL RECREATION PRIORITY AREAS



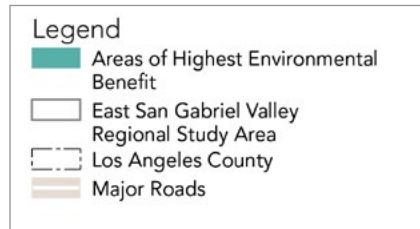
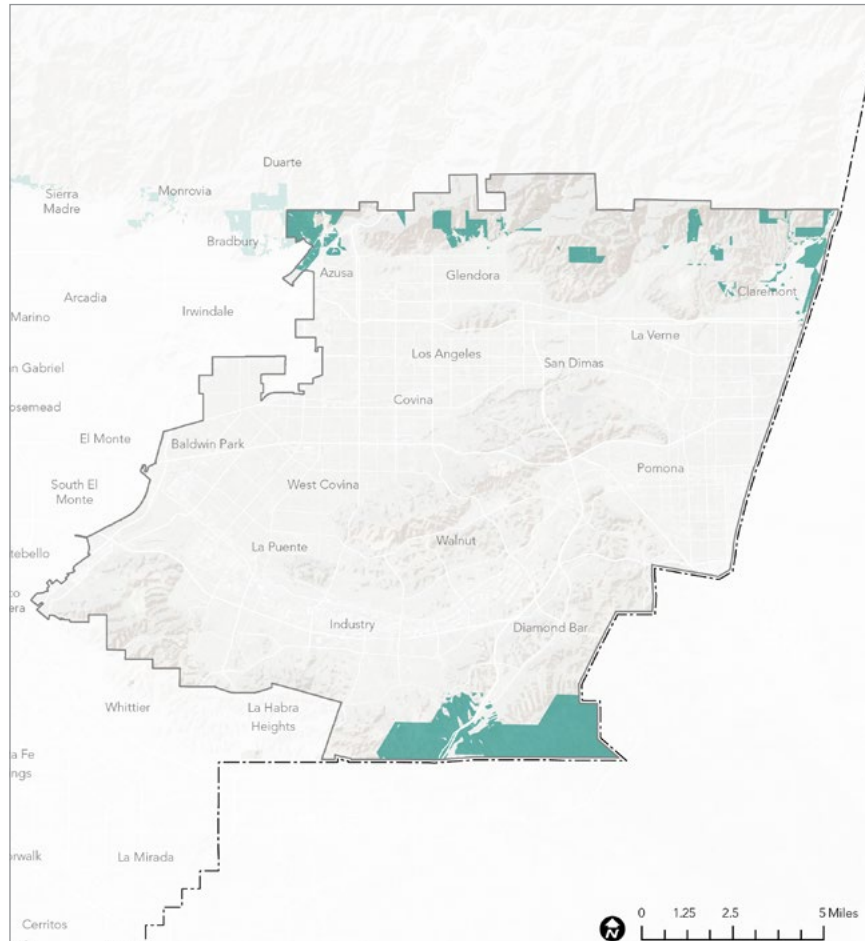
Map source: HPI, 2021; Unacast, 2021; ArcGIS StreetMap Premium, 2021; 2021 RRE Inventory

Areas with:

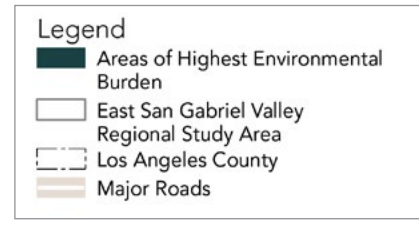
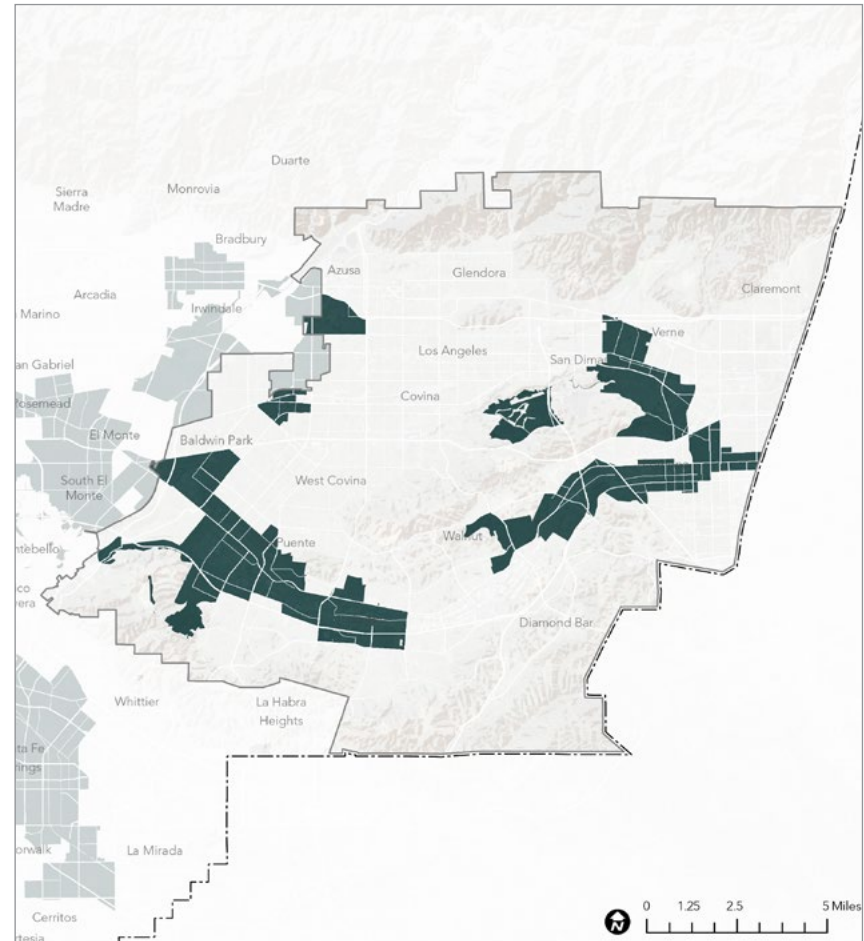


ENVIRONMENTAL CONSERVATION AND RESTORATION PRIORITY AREAS

Priority Areas for Conservation



Priority Areas for Restoration



Maps source: CDFW ACE, 2021; USGS, 2021; COEHHA, 2021; CalFire FRAP 2015