

we all need



PNA+

# APPENDIX A

# REGIONAL STUDY

# AREA PROFILES

This project was previously called the Regional and Rural Edition (RRE) to emphasize its focus on regional and rural recreation needs and priorities. This project name was used during the data collection, and community engagement and outreach phases which occurred primarily in 2021. As this report was being completed in 2022, DPR decided to rename the project the Parks Needs Assessment Plus (PNA+) to clarify and better communicate that this project complements and offers new information not previously included in the 2016 Parks Needs Assessment (PNA), such as mapping and analyses related to population vulnerability, environmental benefits, environmental burdens, and priority areas for environmental conservation, environmental restoration, regional recreation, and rural recreation. (Please note that there remains some text and graphic references to the RRE in this document because that was the project name when some components of this study were completed.)

# ANTELOPE VALLEY REGIONAL STUDY AREA PROFILE

## STUDY AREA ID #1

- » Study Area Description
- » Study Area Demographics
- » Population Vulnerability
- » Regional Site Inventory
- » Environmental Benefits
- » Environmental Burdens
- » Regional Recreation Parks
- » Regional Recreation Park Access
- » Nature-Based Recreation Areas
- » Nature-Based Recreation Area Access
- » Nature-Based Recreation Amenities
- » Regional Trails
- » Regional Trail Access
- » Regional Site Visitorship
- » Community Engagement Themes
- » Regional Recreation Priorities
- » Environmental Conservation and Restoration Priorities

### Note

This profile is not intended to stand alone. For definitions of key terms and a full description of the analysis summarized within please refer to Chapters 3 and 4 of the main report as well as Appendix C: Technical Resources.



## STUDY AREA DESCRIPTION

### LOCATION

The Antelope Valley is located approximately 60 miles north of downtown Los Angeles and, with the Santa Clarita Valley, comprises the northern portion of the County. The unincorporated portion of the Antelope Valley Study Area covers 1,800 square miles, or 44 percent of the 4,083 square miles in the County. The unincorporated Antelope Valley surrounds the cities of Palmdale and Lancaster, and borders San Bernardino County to the east, Ventura County to the west, and Kern County to the north.

### GEOGRAPHY

The study area contains many diverse vegetative communities, geologic forms and climatic conditions. The Angeles National Forest, and the Liebre and Sierra Pelona mountain ranges, are located in the study area. The main land feature is the high desert, with elevations between 2,300 and 2,400 feet above sea level. The study area contains the majority of active agricultural land uses in Los Angeles County. Various Significant Ecological Areas (SEAs) cover large portions of the study area, including the Antelope Valley SEA, San Andreas SEA, Joshua Tree Woodlands SEA, and Santa Clara River SEA. The San Andreas Seismic Fault Zone, which cuts across the study area, poses significant hazards. In addition, much of the study area faces threats of wildfires and floods.

### STUDY AREA ISSUES

Much of the study area is rural and has major constraints including natural hazards, environmental issues including excessive heat and cold, lack of infrastructure, and limited water supply. It is critical that existing rural communities, agriculture, natural resources, and biological diversity remain protected. In addition, incorporating water conservation strategies and encouraging the recycling of water is important.

As thousands of acres of desert lands have been developed over the past decade, the population of the study area has increased significantly. While much of the growth has been at urban densities in and adjacent to the cities of Palmdale and Lancaster, the desirability of rural living and the availability of affordable housing have led to growth in some of the unincorporated communities. In turn, many residents have had to commute further distances to access employment and recreation opportunities. The lack of public transit and transit frequency further impacts access in and from the area, resulting in an increased need for personal vehicles. A growing population in areas with limited infrastructure increases the demand for and put a strain on existing facilities.

### PARK AND RECREATION RELATED ISSUES

- » A lack of shade and other respites from the desert climate, such as water-based recreation facilities like swimming pools and splash pads, make outdoor recreation difficult during warmer parts of the year.
- » Non-vehicular access (i.e., walking, biking, and public transit) to recreational anchors, such as the Angeles National Forest and Pacific Crest Trail, is limited.
- » Conflicts sometimes occur between new development plans and established community use patterns of unofficial, user-created trails.
- » Although this study area has many miles of regional trails, there is still a need to create more trails to improve connectivity and provide additional recreational opportunities for residents and visitors alike.
- » Additional resources, including funding, staffing, and volunteers, are needed to maintain trails for improved safety and user experience.

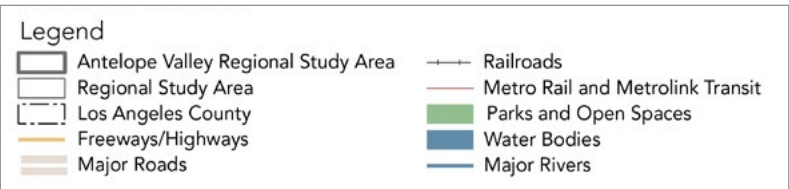
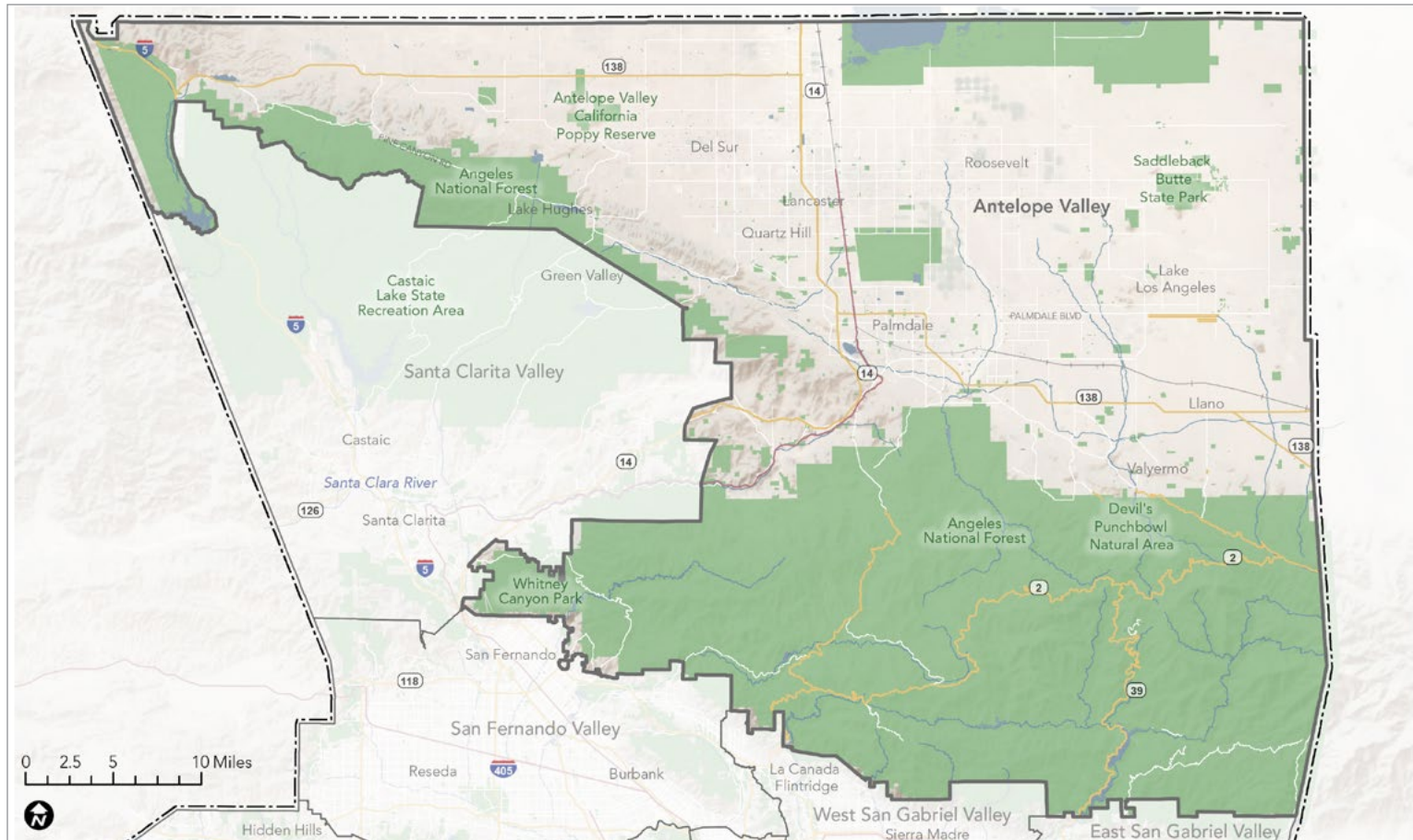
## ANALYSIS FINDINGS

- » There is a high concentration of vulnerable populations in Northwest Antelope Valley, Littlerock, Sun Village, and Lake Los Angeles.
- » The regional recreation facilities and trails in the area are poorly served by public transportation and largely inaccessible without the use of a personal vehicle.
- » The highest rates of visitorship to regional recreation facilities are in the Northwest Antelope Valley, near the Antelope Valley Poppy Preserve and Hungry Valley State Vehicular Recreation Area.
- » The highest Regional Recreation Need is found in Lake Los Angeles, Littlerock, and Sun Village due to a combination of social and environmental factors.
- » Many areas located adjacent to the Angeles National Forest, such as Valyermo, Llano, and Gorman, have been identified as a priority areas for conservation.
- » The study area has 3.22 miles of trails per 1,000 residents which is well above the countywide average of 0.33.

## COMMUNITY ENGAGEMENT THEMES

- » Heat, distance, safety, lack of information and limited facilities are identified as barriers to park use for residents in the study area.
- » Residents say they need more shade, cooling centers and access to water, affordable transit access to parks, additional facilities and programming, enhanced safety measures and more information about parks and amenities.
- » One-third of survey respondents say they are recreating outside more and nearly 90% are looking to do that closer to home because of COVID.

# ANTELOPE VALLEY REGIONAL STUDY AREA

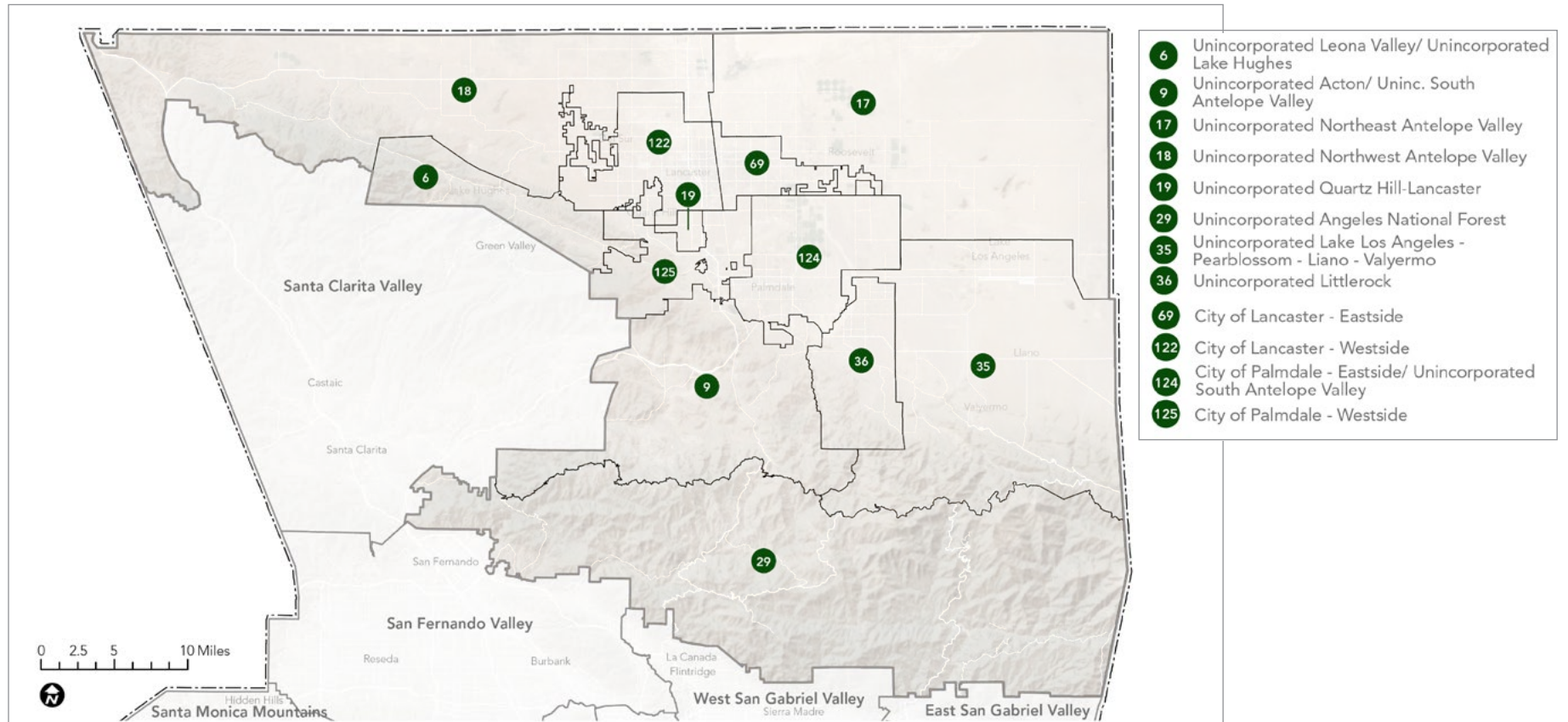


Map source: US Census, 2019; Esri, 2021; MIG, 2021; LAC GIS, 2021; USGS NHD, 2021  
 Note: All Regional Study Profile maps in this chapter include and refer to the sources listed here as basemap layers.



## PNA STUDY AREAS LOCATED WITHIN REGIONAL STUDY AREA

This map shows the relationship of Regional Study Area to the boundaries of the study areas that were analyzed in the 2016 PNA.



Map source: PNA, 2016

# STUDY AREA DEMOGRAPHICS

## Population, Race, Ethnicity, Gender, Income, Age, and Education Level

Population	
<b>Total</b>	<b>382,868</b>

Race	Percentage
White	57.7%
Black or African American	13.6%
American Indian and Alaska Native	0.56%
Asian	3.6%
Native Hawaiian and Other Pacific Islander	0.18%
Some Other Race	19.0%
Two or More Races	5.4%
<b>Total</b>	<b>100%</b>

Ethnicity	Percentage
Hispanic or Latino	44.7%
Not Hispanic or Latino	55.3%
<b>Total</b>	<b>100%</b>

Income	Percentage
Less than \$25,000	26.1%
\$25,000-\$49,999	22.8%
\$50,000-\$74,999	17.2%
\$75,000-\$99,999	12.8%
\$100,000-\$150,000	13.4%
\$150,000+	7.7%
<b>Total</b>	<b>100%</b>

Gender	Percentage
Male	50.9%
Female	49.1%
<b>Total</b>	<b>100%</b>

Age	Percentage
Under 5 years	7.3%
5 to 9 years	7.1%
10 to 14 years	7.6%
15 to 19 years	8.3%
20 to 29 years	15.4%
30 to 39 years	11.4%
40 to 49 years	14.0%
50 to 59 years	14.3%
60 to 69 years	8.3%
70 to 79 years	4.1%
80+ years	2.2%
<b>Total</b>	<b>100%</b>

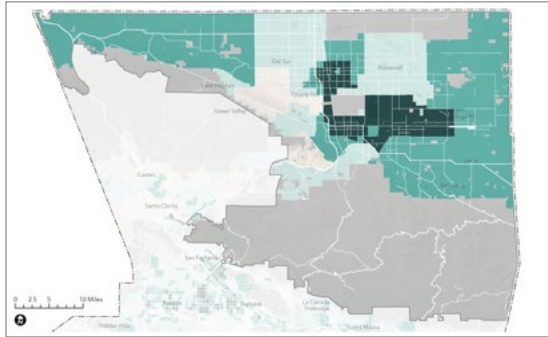
Education Level	Percentage
Less than 9th Grade	10.6%
9th-12th grade	12.1%
HS Grad	26.8%
Some college, no degree	26.6%
Associates	8.2%
Bachelors	10.4%
Graduate or professional degree	5.1%
<b>Total</b>	<b>100%</b>

Source: Planning Area Framework, The Los Angeles County General Plan 2035.  
 2014 ACS 5-Year Estimate Subject t=Tables (<https://data.census.gov/cedsci/table?q=United%20States&g=0500000US06037%241400000&d=ACS%205-Year%20Estimates%20Subject%20Tables>)

Note: At the time that this report was prepared, 2020 Census results were not available.

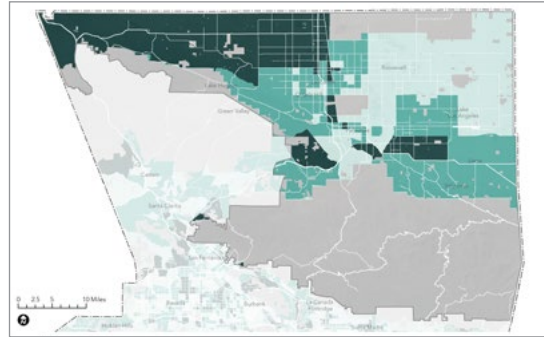
# POPULATION VULNERABILITY DIMENSIONS

## Social Barriers Dimension



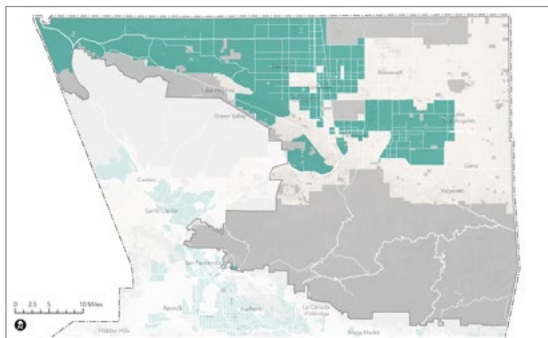
- Indicators:
- » High Poverty Rate
  - » High Unemployment Rate
  - » Majority-Minority Population
  - » High % of Young Children
  - » High % of Elderly Residents
  - » High % of Non-English-Speaking Residents
  - » Low % of Two-Parent Households

## Transportation Barriers Dimension



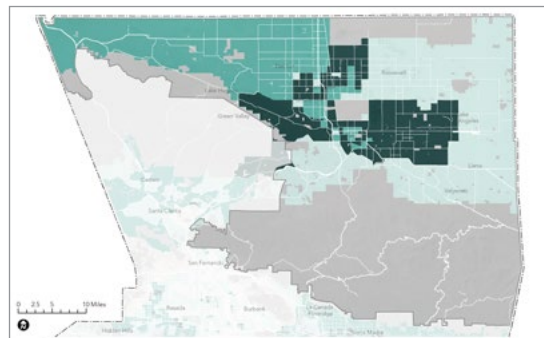
- Indicators:
- » Low Automobile Access
  - » Low Public Transit Access
  - » Low Active Commuting Rate
  - » High Traffic Density
  - » High Pedestrian Injuries

## Health Vulnerability Dimension



- Indicators:
- » Low Park Access
  - » Low Tree Canopy
  - » High % Impervious Surface
  - » High Number of Excessive Heat Days
  - » High Urban Heat Island Index Score

## Environmental Vulnerability Dimension



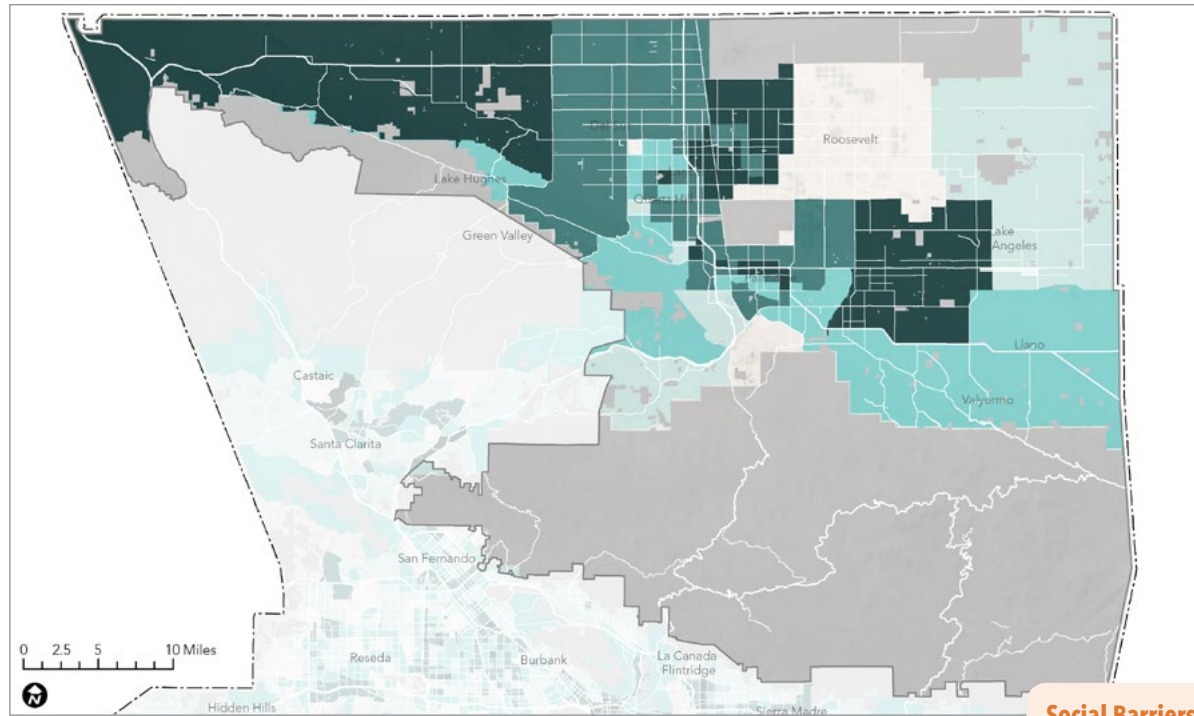
- Indicators:
- » Reduced Life Expectancy at Birth
  - » High Pollution Levels



Maps source: HPI, 2021; 2021 RRE Inventory



# COMPOSITE POPULATION VULNERABILITY



**Legend**

	Moderate to High Vulnerability for ONE Dimension		Regional Site Inventory
	Moderate to High Vulnerability for TWO Dimensions		Antelope Valley Regional Study Area
	Moderate to High Vulnerability for THREE Dimensions		Los Angeles County
	Moderate to High Vulnerability for FOUR Dimensions		Major Roads

Map source: HPI, 2021; 2021 RRE Inventory

**Dimensions of Population Vulnerability**

**Social Barriers Dimension:**

Prevalence of:

- » Young Children
- » Elderly
- » Non-English Speaking Residents
- » Single Parent Households
- » Poverty
- » Unemployment
- » Majority-Minority Population

**Transportation Barriers Dimension:**

- » Limited Active Commuting
- » Limited Automobile Access
- » Limited Public Transit Access
- » High Traffic Density
- » High Pedestrian Injuries

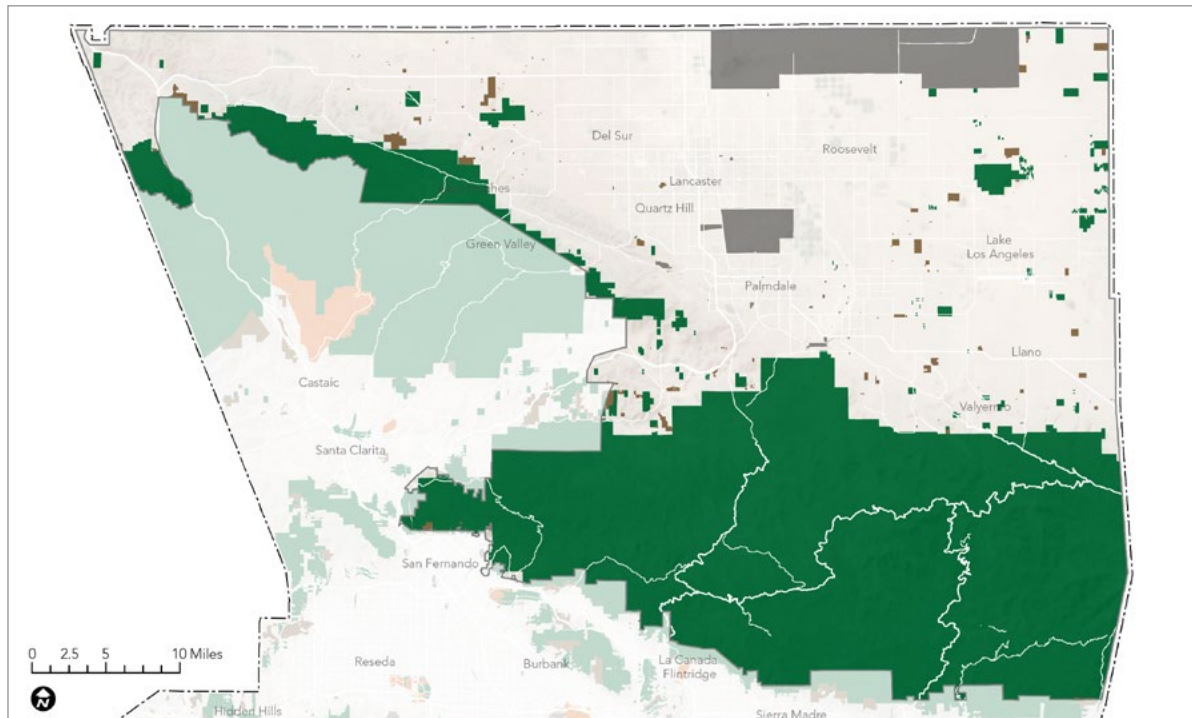
**Health Vulnerability Dimension:**

- » Reduced Life Expectancy at Birth
- » High Pollution Levels

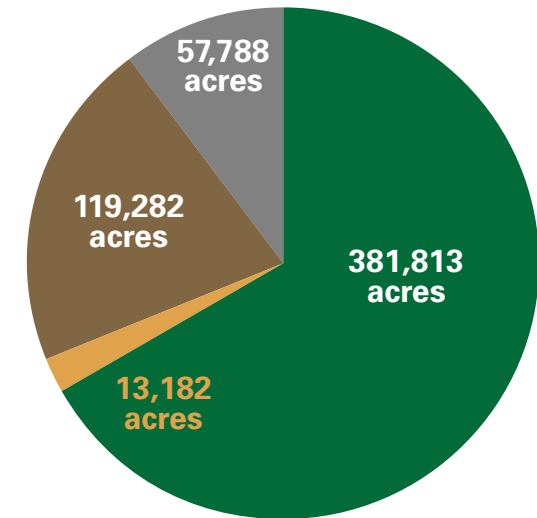
**Environmental Vulnerability Dimension:**

- » Limited Park Access
- » Limited Tree Canopy
- » High % of Impervious Surface
- » High Excessive Heat Days
- » High Urban Heat Island Index Score


# REGIONAL SITE INVENTORY




Map source: 2021 RRE Inventory




- REGIONAL RECREATION PARKS
- NATURE-BASED RECREATION AREAS
- REGIONAL SPECIALIZED RECREATION AREAS
- CONSERVATION AREAS
- OTHER PUBLIC AND SEMI-PUBLIC OPEN SPACE



**572,064**  
TOTAL ACRES OF  
REGIONAL FACILITIES

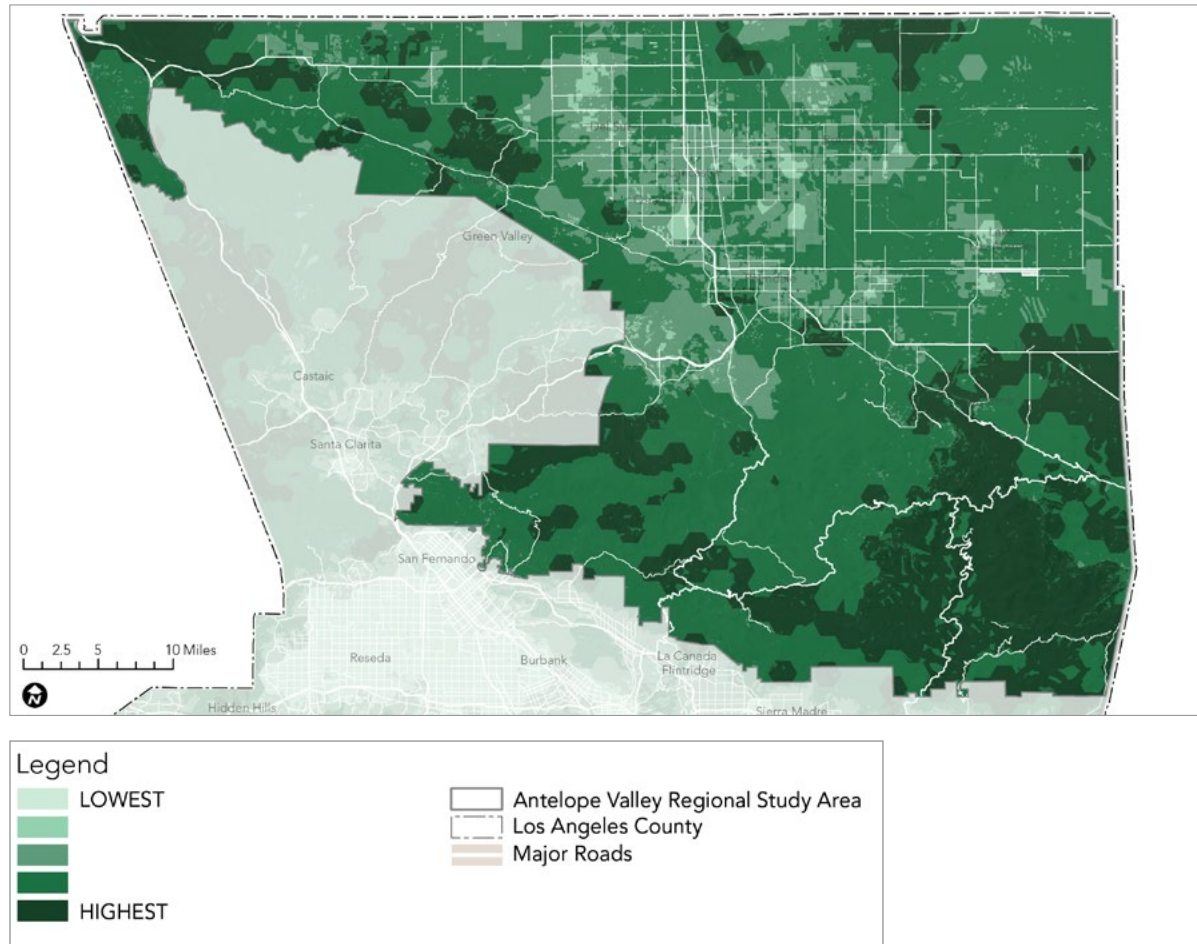


**46%**  
OF THE TOTAL LAND  
AREA IS REGIONAL  
FACILITY LAND



**1,494**  
ACRES OF REGIONAL  
FACILITY LAND PER  
1,000 RESIDENTS

# ENVIRONMENTAL BENEFITS



## INDICATORS

**Species Diversity.** Species diversity data represent a count of the number of different species for amphibians, aquatic macroinvertebrates, birds, fish, mammals, plants, and reptiles.

**Significant Habitat.** Significant habitat values represent terrestrial habitats or vegetation types that are the focus of state, national, or locally legislated conservation laws, as well as key habitat areas that are essential to the survival and reproduction of focal wildlife species.

**Habitat Connectivity.** Habitat connectivity values summarize information on the presence of mapped terrestrial corridors or linkages and juxtaposition to large, contiguous, natural areas.

**Proximity to Waterbody.** Proximity to waterbody represents the distance to a water drainage network of the US. Proximity was categorized as less than 0.1 mile (highest benefit), 0.1 to 0.25 mile, 0.25 to 0.5 mile, 0.5 -1.0 mile, or greater than 1.0 mile (lowest benefit).

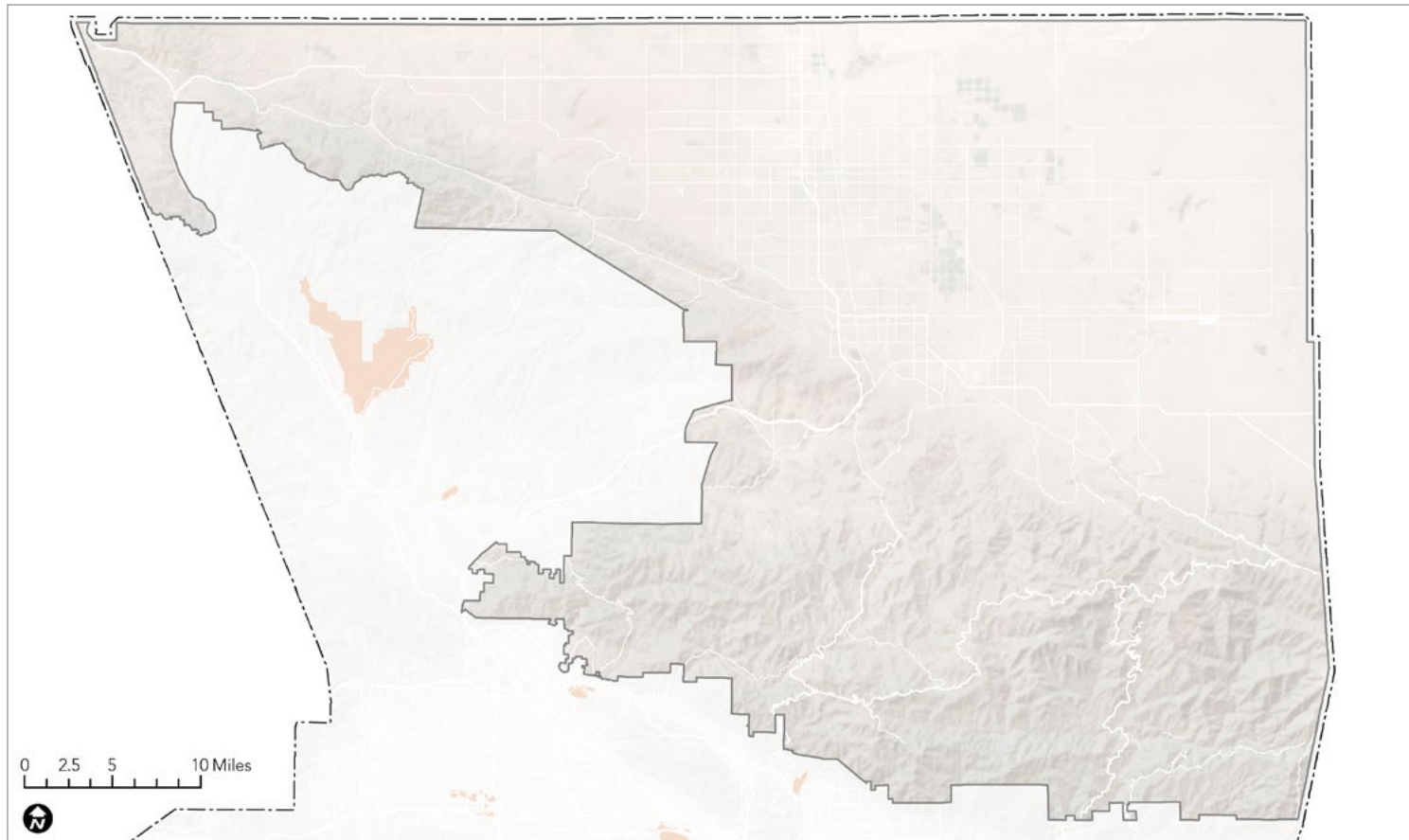
**Habitat Type.** Habitat types are divided into natural vegetation (high score), agriculture/barren/other (low score), and urban (lowest score).

Map source: CDFW ACE, 2021; USGS, 2021; COEHHA, 2021; CalFire FRAP 2015





# REGIONAL RECREATION PARKS



0

ACRES OF  
REGIONAL  
RECREATION  
PARKLAND



0

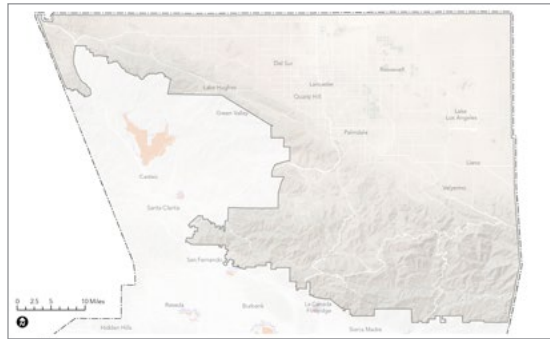
ACRES OF  
REGIONAL  
RECREATION  
PARKLAND PER  
1,000 STUDY  
AREA RESIDENTS

Map source: 2021 RRE Inventory



# REGIONAL RECREATION PARK ACCESS

Walking Distance (0.5 miles from entry)

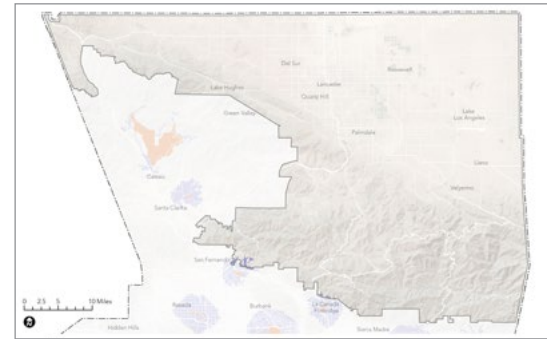


**0%**   
OF RESIDENTS  
LIVE WITHIN  
WALKING DISTANCE  
OF A REGIONAL  
RECREATION PARK

**Legend**

- Areas within a 0.5-mile walk of a Regional Recreation Park Entry
- Antelope Valley Regional Study Area
- Los Angeles County
- Major Roads
- Regional Recreation Park

Cycling Distance (2.5 miles from entry)

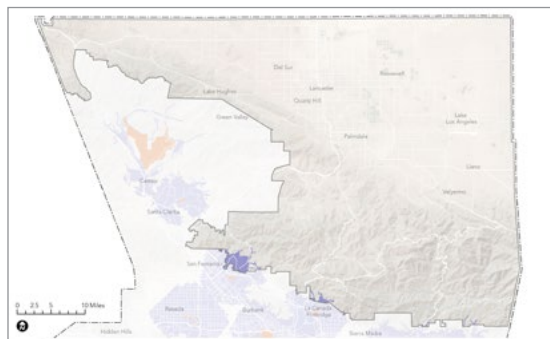


**0%**   
OF RESIDENTS  
LIVE WITHIN  
CYCLING DISTANCE  
OF A REGIONAL  
RECREATION PARK

**Legend**

- Areas within a 2.5-mile bicycle ride of a Regional Recreation Park Entry
- Antelope Valley Regional Study Area
- Los Angeles County
- Major Roads
- Regional Recreation Park

Driving Distance (5 miles from entry)

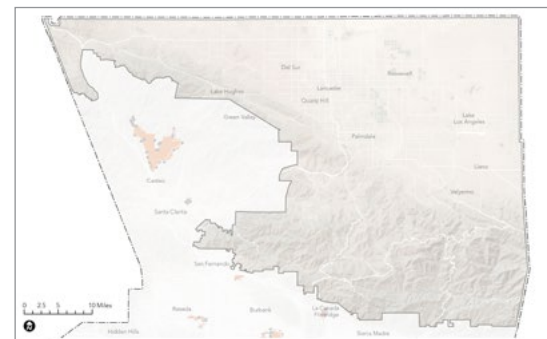


**0%**   
OF RESIDENTS  
LIVE WITHIN  
DRIVING DISTANCE  
OF A REGIONAL  
RECREATION PARK

**Legend**

- Areas within a 5-mile drive of a Regional Recreation Park Entry
- Antelope Valley Regional Study Area
- Los Angeles County
- Major Roads
- Regional Recreation Park

Transit Service (entry is within 0.5 miles of transit stop)



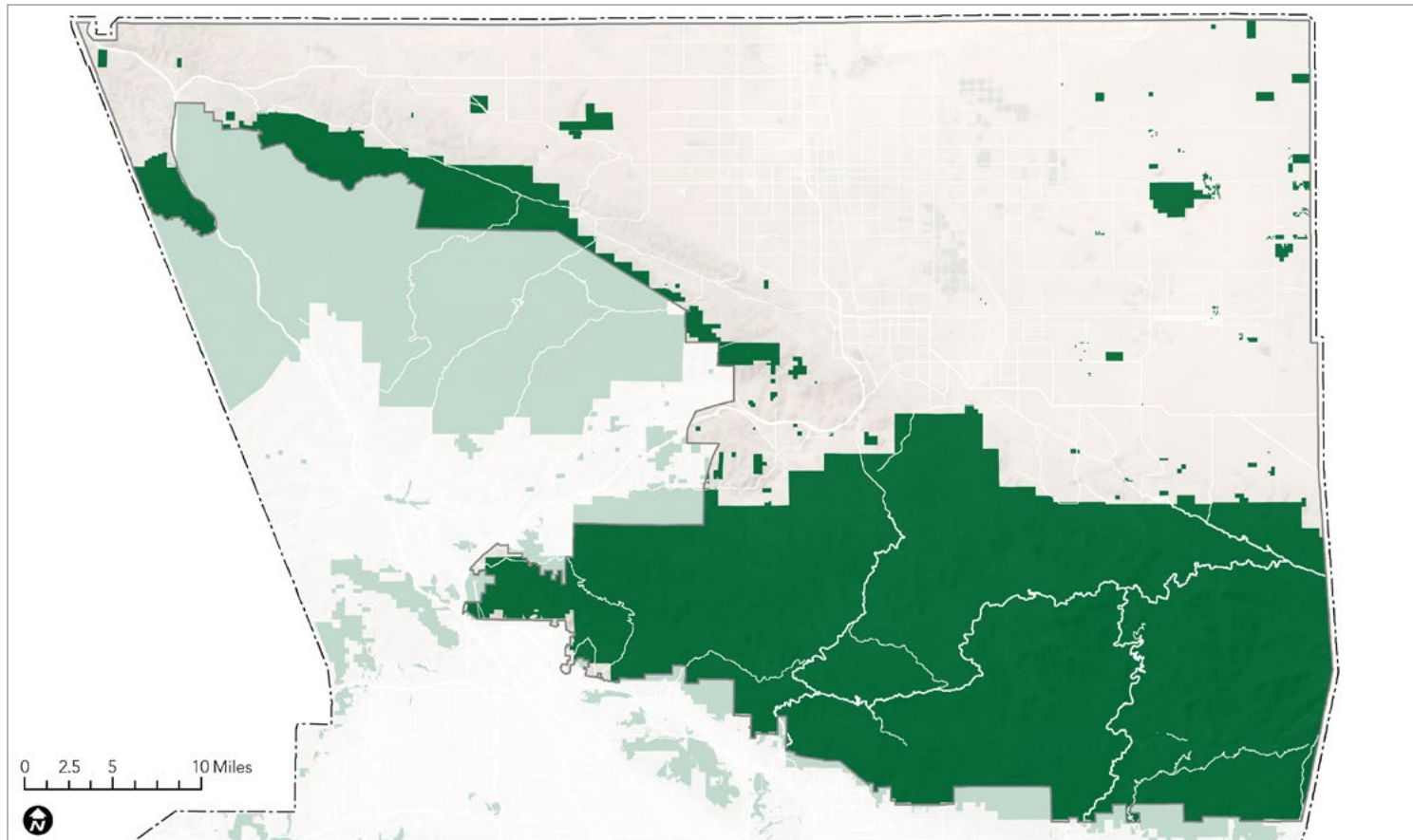
**0%**   
OF REGIONAL  
RECREATION PARK  
ENTRANCES ARE  
LOCATED WITHIN A  
HALF-MILE WALK OF A  
PUBLIC TRANSIT STOP

**Legend**

- Entry Point Served by Public Transit (located within a half mile of a Transit Stop)
- Entry Point Not Served by Public Transit (not located within a half mile of a Transit Stop)
- Regional Recreation Park
- Antelope Valley Regional Study Area
- Los Angeles County
- Major Roads

Maps source: ArcGIS StreetMap Premium, 2021; 2021 RRE Inventory

# NATURE-BASED RECREATION AREAS



**381,813**

**ACRES OF  
NATURE-BASED  
RECREATION  
AREA LAND**



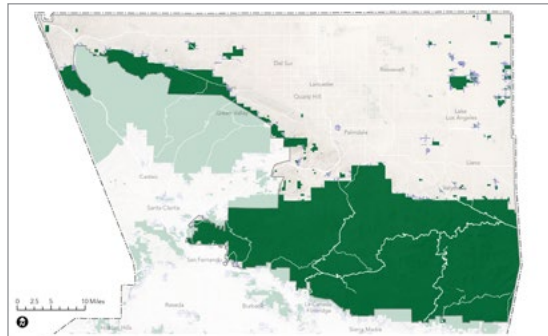
**997**

**ACRES OF  
NATURE-BASED  
RECREATION  
AREA LAND PER  
1,000 REGIONAL  
STUDY AREA  
RESIDENTS**

Map source: 2021 RRE Inventory

# NATURE-BASED RECREATION AREA ACCESS

Walking Distance (0.5 miles from entry)

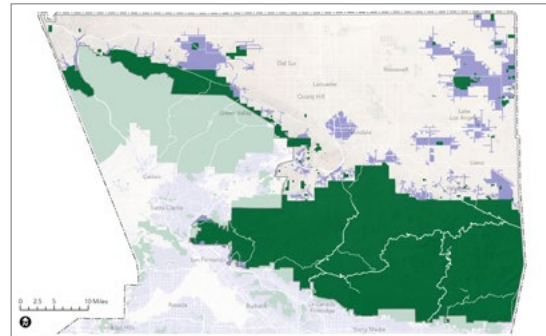


**1%**   
OF STUDY AREA RESIDENTS LIVE WITHIN WALKING DISTANCE OF A NATURE-BASED RECREATION AREA

Legend

-  Areas within a 0.5-mile walk of a Nature-Based Recreation Area Entry
-  Nature-Based Recreation Area
-  Antelope Valley Regional Study Area
-  Los Angeles County
-  Major Roads

Cycling Distance (2.5 miles from entry)

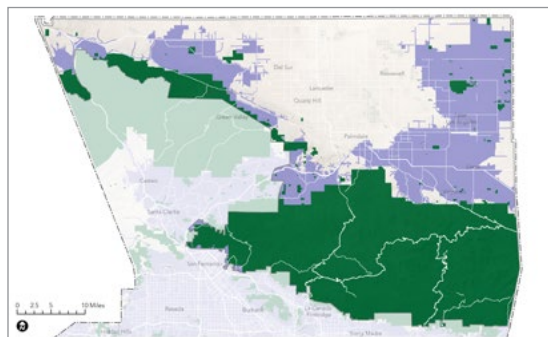


**14%**   
OF STUDY AREA RESIDENTS LIVE WITHIN CYCLING DISTANCE OF A NATURE-BASED RECREATION AREA

Legend

-  Areas within 2.5-mile bicycle ride of a Nature-Based Recreation Area Entry
-  Nature-Based Recreation Area
-  Antelope Valley Regional Study Area
-  Los Angeles County
-  Major Roads

Driving Distance (5 miles from entry)

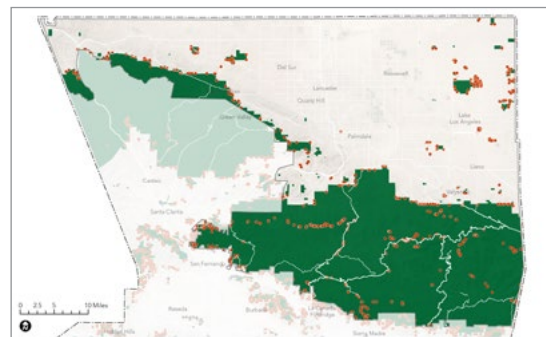


**14%**   
OF STUDY AREA RESIDENTS LIVE WITHIN DRIVING DISTANCE OF A NATURE-BASED RECREATION AREA

Legend







-  Areas within a 5-mile drive of a Nature-Based Recreation Area Entry
-  Nature-Based Recreation Area
-  Antelope Valley Regional Study Area
-  Los Angeles County
-  Major Roads

Transit Service (entry is within 0.5 miles of transit stop)



**11%**   
OF NATURE-BASED RECREATION AREA ENTRY POINTS AREA SERVED BY PUBLIC TRANSIT

Legend

-  Entry Point Served by Public Transit (located within a half mile of a Transit Stop)
-  Entry Point Not Served by Public Transit (not located within a half mile of a Transit Stop)
-  Nature-Based Recreation Area
-  Antelope Valley Regional Study Area
-  Los Angeles County
-  Major Roads

Maps source: ArcGIS StreetMap Premium, 2021; 2021 RRE Inventory

## REGIONAL RECREATION AMENITIES



### GATHERING SPACES



**9**  
Group Picnic Areas



**29**  
Individual Picnic Areas



**1**  
Indoor Event Spaces



**1**  
Outdoor Event Spaces



### SPORTS FACILITIES



**0**  
Shooting Ranges



**0**  
Archery Ranges



**0**  
Snowsport Facilities



### TRAILS AND PATHWAYS



**0**  
Rock Climbing Areas



**177**  
Trailheads



### WATER-BASED RECREATION



**0**  
Boating Areas



**1**  
Swimming Areas



**0**  
Watersport Facilities



**4**  
Waterfront Access Areas



**0**  
Fishing Areas



### OVERNIGHT ACCOMMODATIONS



**380**  
Tent Campsites



**1**  
RV Campsites



### EXPERIENTIAL LEARNING OPPORTUNITIES



**11**  
Visitor Centers



**9**  
Environmental Learning Facilities



**0**  
Gardens



### SUPPORT FACILITIES



**1**  
Concessions



**1,569**  
Parking Spaces

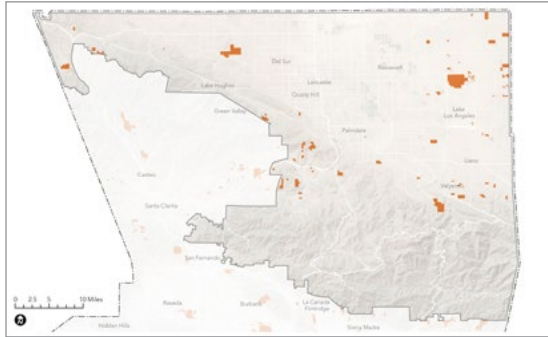


**41**  
Restrooms



# REGIONAL RECREATION OPPORTUNITY TYPES

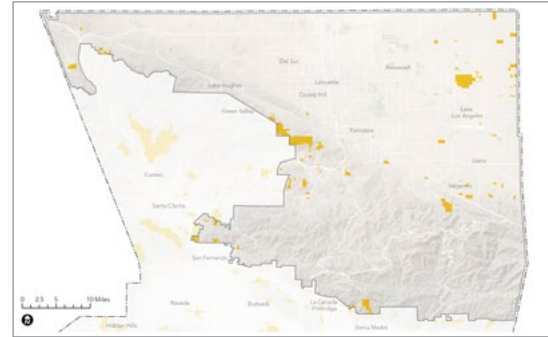
## Gathering Spaces



### Legend

- Regional Sites with Gathering Spaces
- Antelope Valley Regional Study Area
- Los Angeles County
- Major Roads

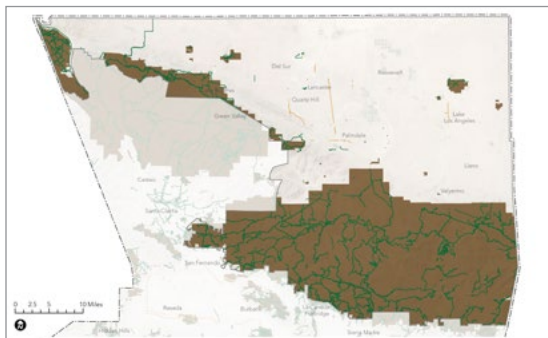
## Sports Facilities



### Legend

- Regional Sites with Sports Facilities
- Antelope Valley Regional Study Area
- Los Angeles County
- Major Roads

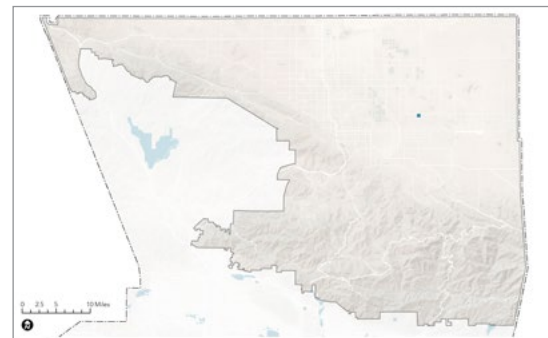
## Trails and Pathways



### Legend

- Regional Sites with Trails and Pathways
- Antelope Valley Regional Study Area
- Los Angeles County
- Major Roads
- Regional Trails
- Regional Bikeways

## Water-Based Recreation



### Legend

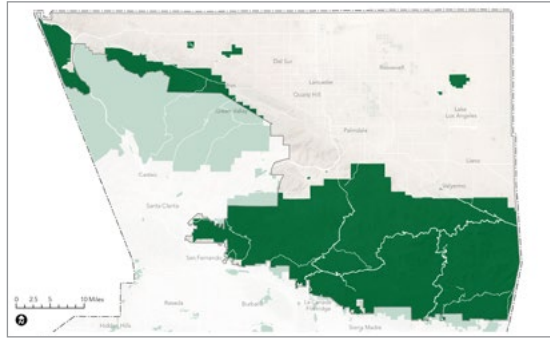
- Regional Sites with Water-Based Recreation
- Antelope Valley Regional Study Area
- Los Angeles County
- Major Roads

Maps source: 2021 RRE Inventory



# REGIONAL RECREATION AMENITY ANALYSIS

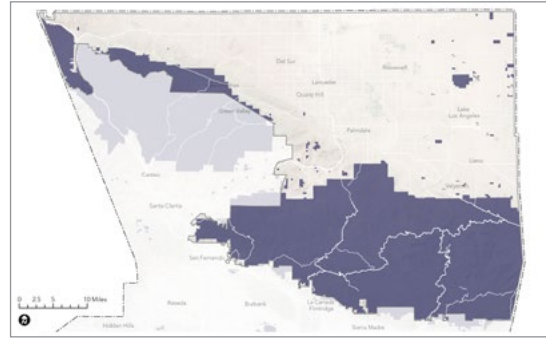
## Experiential Learning Opportunities



### Legend

- Regional Sites with Experiential Learning Opportunities
- Antelope Valley Regional Study Area
- Los Angeles County
- Major Roads

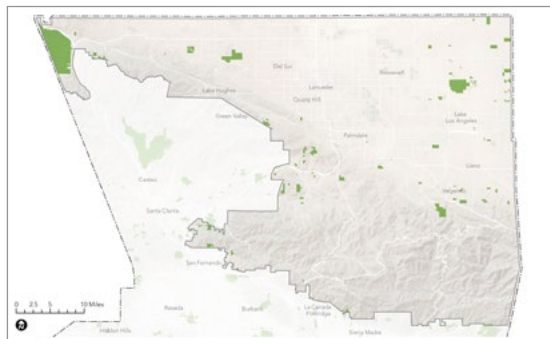
## Overnight Accommodations



### Legend

- Regional Sites with Overnight Accommodations
- Antelope Valley Regional Study Area
- Los Angeles County
- Major Roads

## Support Facilities

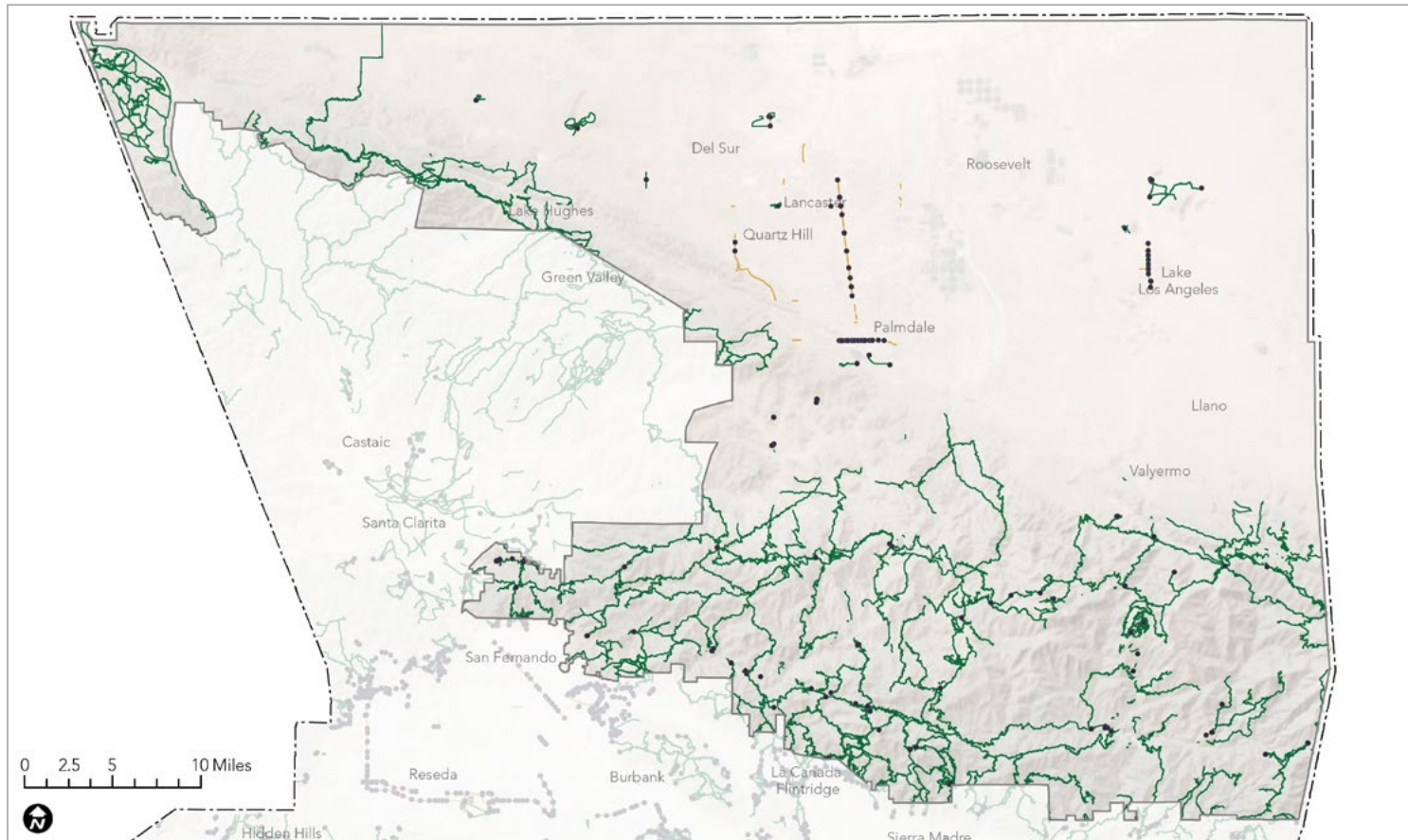


### Legend

- Regional Sites with Support Facilities
- Antelope Valley Regional Study Area
- Los Angeles County
- Major Roads

Maps source: 2021 RRE Inventory

# REGIONAL TRAILS



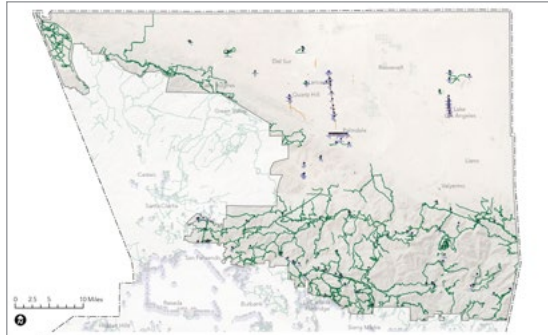
  
**1,234**  
MILES OF REGIONAL TRAIL

  
**3.22**  
MILES OF REGIONAL TRAIL PER 1,000 STUDY AREA RESIDENTS

Map source: LAC DPR, 2021; 2021 RRE Inventory

# REGIONAL TRAIL ACCESS

Walking Distance (0.5 miles from entry)

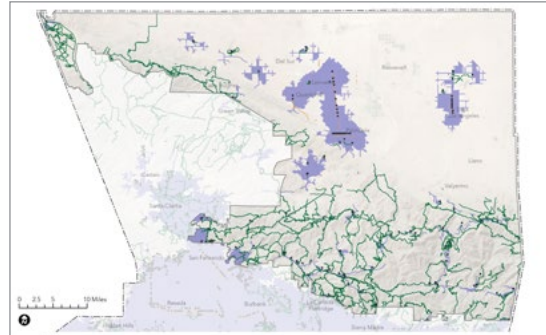


**5%**   
OF STUDY AREA  
RESIDENTS LIVE  
WITHIN WALKING  
DISTANCE OF A  
TRAILHEAD

**Legend**

-  Areas within a 0.5-mile walk of a Trailhead or Access Point
-  Regional Trails
-  Regional Bikeways
-  Trailheads and Access Points
-  Antelope Valley Regional Study Area
-  Los Angeles County
-  Major Roads

Cycling Distance (2.5 miles from entry)

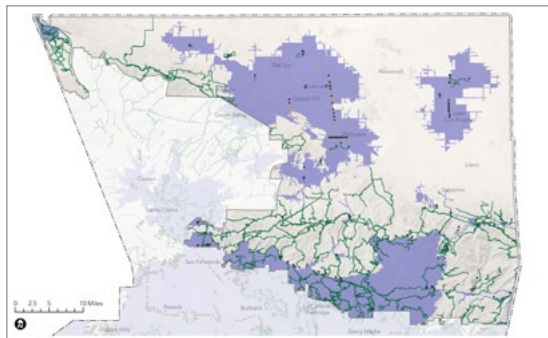


**57%**   
OF STUDY AREA  
RESIDENTS LIVE  
WITHIN CYCLING  
DISTANCE OF A  
TRAILHEAD

**Legend**

-  Areas within a 2.5-mile bicycle ride of a Trailhead or Access Point
-  Regional Trails
-  Regional Bikeways
-  Trailheads and Access Points
-  Antelope Valley Regional Study Area
-  Los Angeles County
-  Major Roads

Driving Distance (5 miles from entry)

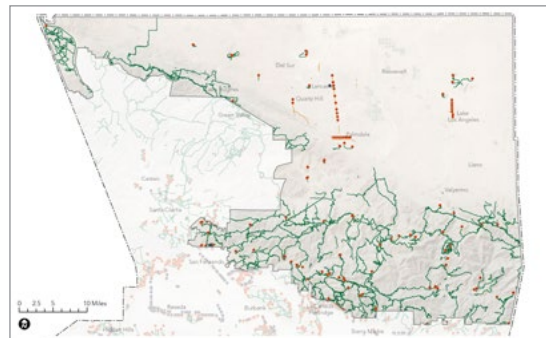


**89%**   
OF STUDY AREA  
RESIDENTS LIVE  
WITHIN DRIVING  
DISTANCE OF A  
TRAILHEAD

**Legend**








-  Areas within a 5-mile drive of a Trailhead or Access Point
-  Regional Trails
-  Regional Bikeways
-  Trailheads and Access Points
-  Antelope Valley Regional Study Area
-  Los Angeles County
-  Major Roads

Transit Service (entry is within 0.5 miles of transit stop)



**1%**   
OF TRAILHEADS ARE  
SERVED BY PUBLIC  
TRANSIT

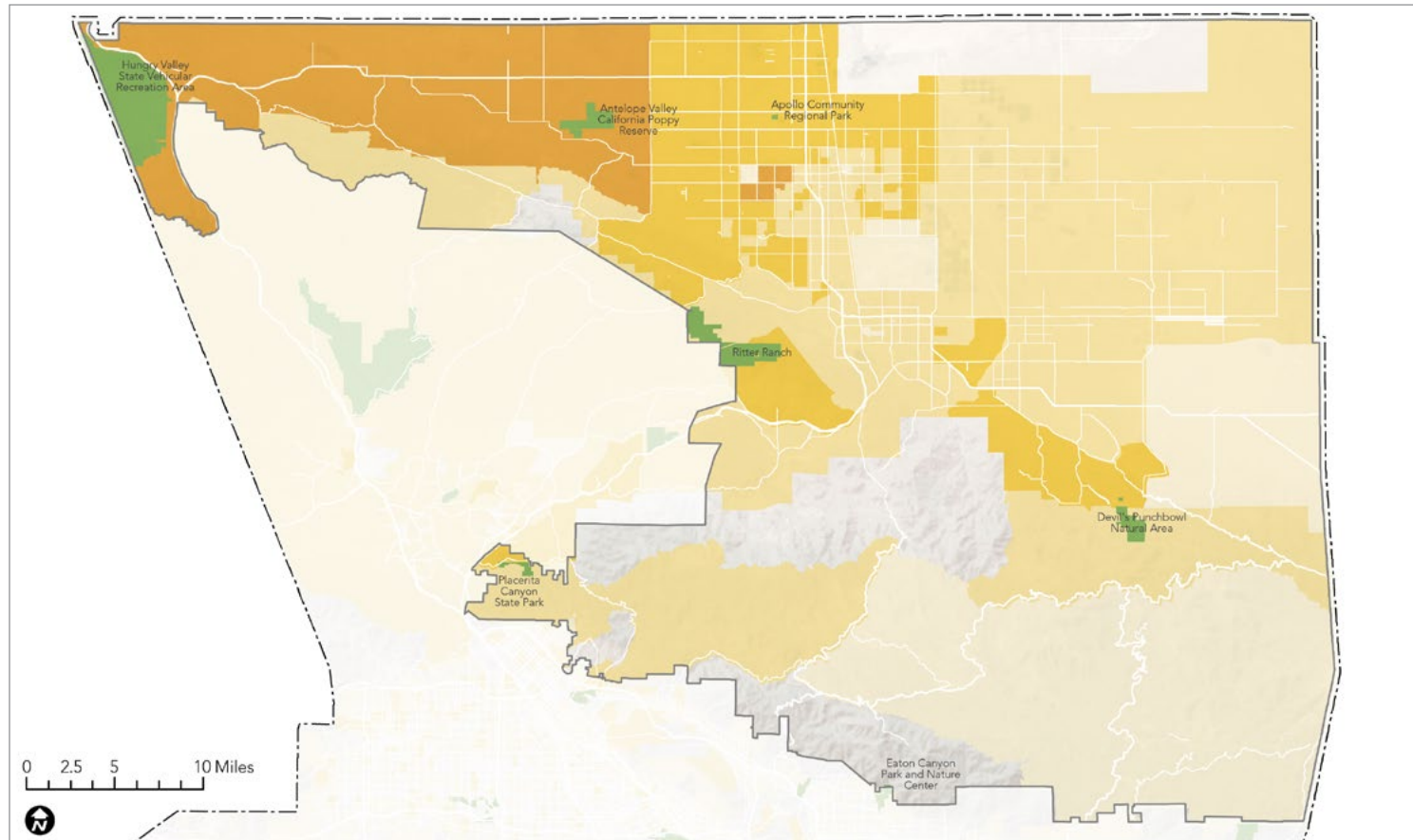
**Legend**

-  Trailhead or Access Point Served by Public Transit (located within a half mile walk of a Transit Stop)
-  Trailhead or Access Point Not Served by Public Transit (not located within a half mile walk of a Transit Stop)
-  Regional Trails
-  Regional Bikeways
-  Antelope Valley Regional Study Area
-  Los Angeles County
-  Major Roads

Maps source: LAC DPR, 2021; ArcGIS StreetMap Premium, 2021; 2021 RRE Inventory



# REGIONAL SITE VISITORSHIP



## REGIONAL SITES INCLUDED IN VISITORSHIP ANALYSIS

- » Antelope Valley Poppy Reserve
- » Apollo Community Regional Park
- » Devil's Punchbowl Natural Area
- » Hungry Valley State Vehicular Recreation Area
- » Placerita Canyon State Park
- » Ritter Ranch



Map source: Unacast, 2021; 2021 RRE Inventory

VISITORSHIP REPORT 2019 - 2020

# Antelope Valley Poppy Reserve



## VITAL STATISTICS

## ANNUAL VISITORSHIP / VISITOR ORIGIN



**KEY PARK AMENITIES**

- Visitor Center
- Historical/Cultural Site
- Picnic Areas
- Interpretive Exhibits
- Vista Point

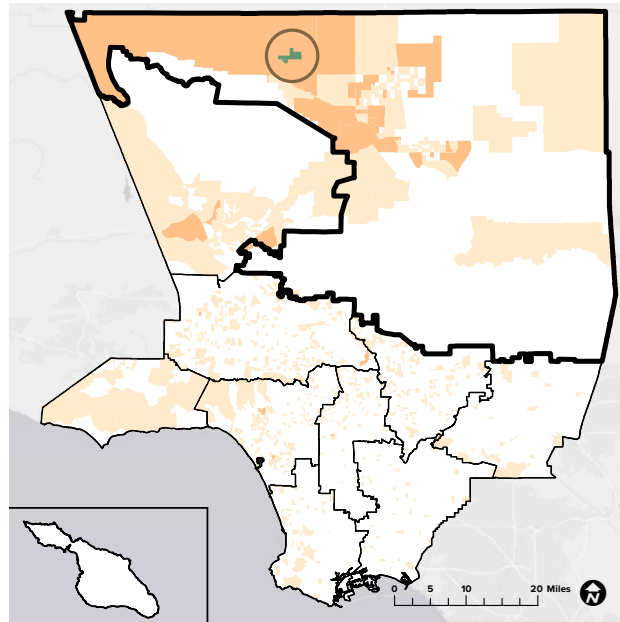
**DESCRIPTION**

The Antelope Valley Poppy Reserve is located in the far northeast corner of Los Angeles County on the state's most consistent poppy-bearing land. Visitors can find a full display of wildflowers including owl's clover, lupine, goldfield, cream cups and coreopsis. The Reserve has eight miles of trails through rolling hills, including paved sections for wheelchair access. The park is open year-round. The Jane S. Pinheiro Interpretive Center displays wildflower and wildlife exhibits, an orientation video, a gallery of watercolor paintings and a gift shop. The Interpretive Center is only open during the spring wildflower bloom and for special events. Shaded picnic tables are available year-round and offer a scenic view over the valley to the San Gabriel Mountains.

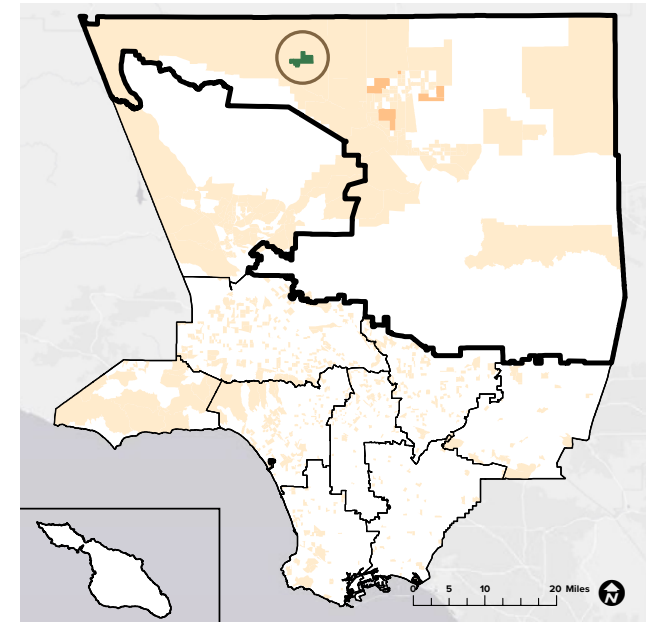
**WEBSITE**

[www.parks.ca.gov/?page\\_id=627](http://www.parks.ca.gov/?page_id=627)

2019  
**57,526** visitors



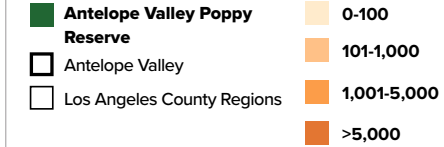
2020  
**8,772** visitors



**58%**  
originated from within LA County

**42%**  
originated from outside LA County

**14%**  
originated from Antelope Valley



**61%**  
originated from within LA County

**29%**  
originated from outside LA County

**22%**  
originated from Antelope Valley

Sources: Unacast 2021 (LA County DPR 2020, LA County PNA 2016, ESRI 2021)

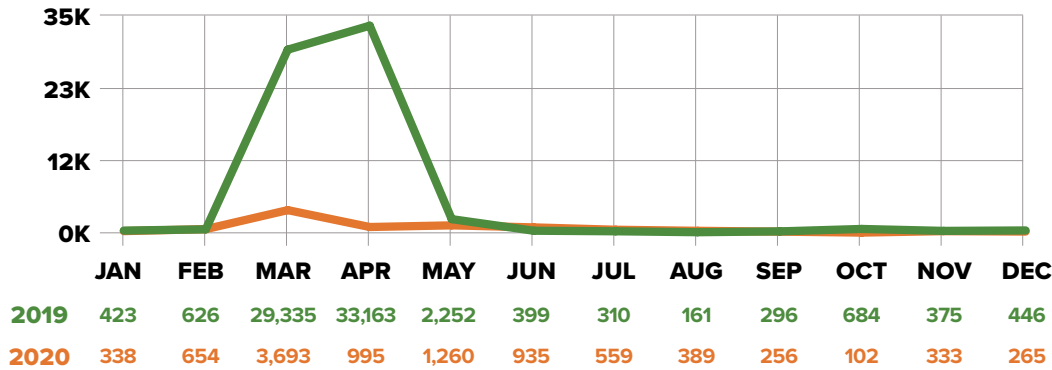


VISITORSHIP REPORT 2019 - 2020

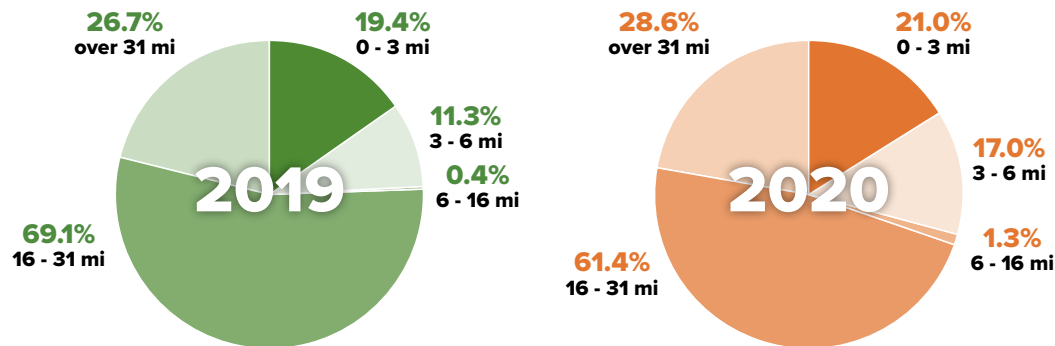
# Antelope Valley Poppy Reserve



## MONTHLY VISITORSHIP



## TRAVEL DISTANCE



## DEMOGRAPHICS

### EDUCATION

	High School Diploma	Some College, No Degree	Associates Degree	Bachelors Degree	Masters Degree & Above
<b>2019</b>	15.2%	19.9%	7.7%	20.0%	8.3%
<b>2020</b>	16.6%	20.9%	7.2%	17.6%	6.8%

### INCOME

	Less than \$24,999	\$25,000 - \$49,999	\$50,000 - \$74,999	\$75,000 - \$99,999	\$100,000 - \$124,999	More than \$125,000
<b>2019</b>	16.2%	14.4%	19.9%	12.6%	10.2%	26.6%
<b>2020</b>	19.3%	13.9%	21.1%	13.4%	9.2%	22.8%

### GENDER IDENTITY

	Male	Female
<b>2019</b>	48.3%	51.7%
<b>2020</b>	48.6%	51.4%

### RACE/ETHNICITY

	Amer-Indian	Asian	Black	Hispanic	White	2 or More	Other
<b>2019</b>	1.1%	10.8%	6.3%	28.3%	49.9%	3.3%	0.2%
<b>2020</b>	0.2%	11.6%	7.9%	33.9%	43.3%	2.8%	0.2%

### AGE

	18-29	30-39	40-49	50-59	60-69	70-79	80+
<b>2019</b>	22.5%	16.4%	17.5%	17.9%	13.9%	7.2%	4.6%
<b>2020</b>	24.8%	17.7%	17.6%	17.7%	12.2%	6.2%	3.8%

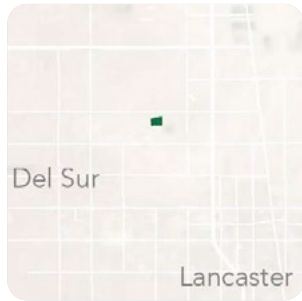
VISITORSHIP REPORT 2019 - 2020

# Apollo Community Regional Park



## VITAL STATISTICS

## ANNUAL VISITORSHIP / VISITOR ORIGIN



**KEY PARK AMENITIES**

- Children's Play Area
- Civic Art
- Concession Stands
- Fishing Lakes
- Group Picnic Shelters
- Horseshoe Pits
- Track

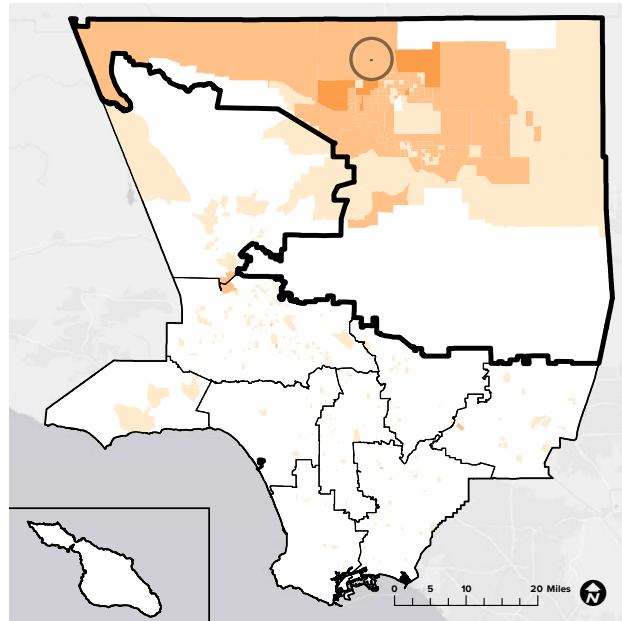
**DESCRIPTION**

Apollo Community Regional Park is a 54-acre park in Lancaster, CA. Named in honor of the Apollo 11 astronauts, this park features three lakes and hosts three fishing derbies every year with prizes awarded for the biggest catch. Visitors can enjoy lunch under one of the many picnic shelters or take a leisurely stroll on the walking paths around the lakes. Additional park amenities include a children's play area, restrooms, barbeque areas, civic art, concession stands, horseshoe pits and a track.

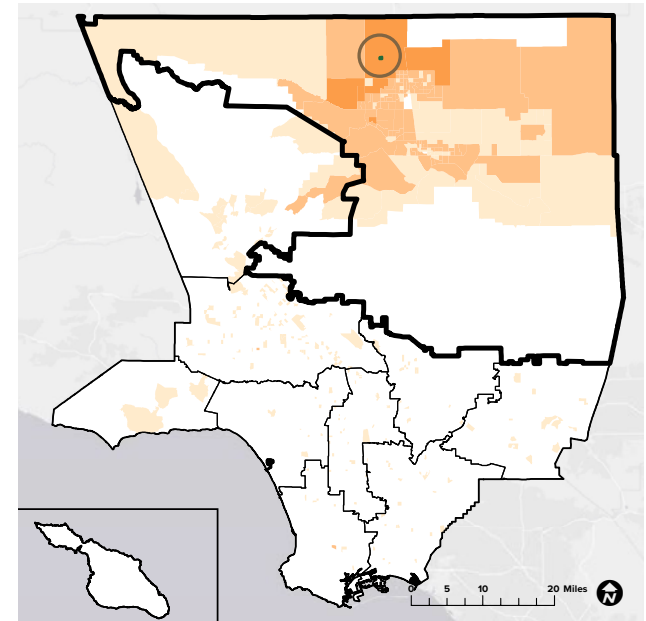
**WEBSITE**

[www.parks.lacounty.gov/apollo-community-regional-park/](http://www.parks.lacounty.gov/apollo-community-regional-park/)

2019  
**59,118** visitors



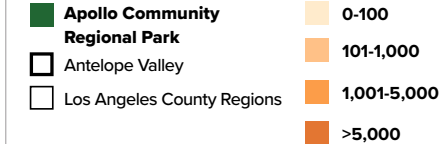
2020  
**64,571** visitors



**81%**  
originated from within LA County

**19%**  
originated from outside LA County

**73%**  
originated from Antelope Valley



**81%**  
originated from within LA County

**19%**  
originated from outside LA County

**73%**  
originated from Antelope Valley

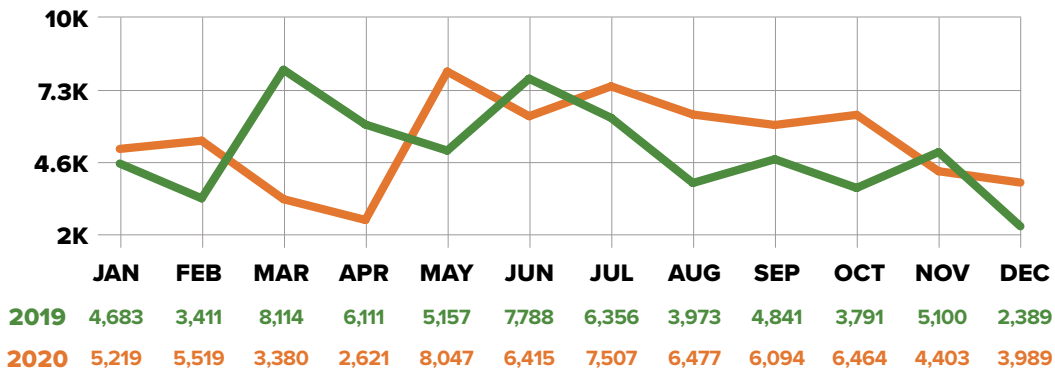
Sources: Unacast 2021 (LA County DPR 2020, LA County PNA 2016, ESRI 2021)

VISITORSHIP REPORT 2019 - 2020

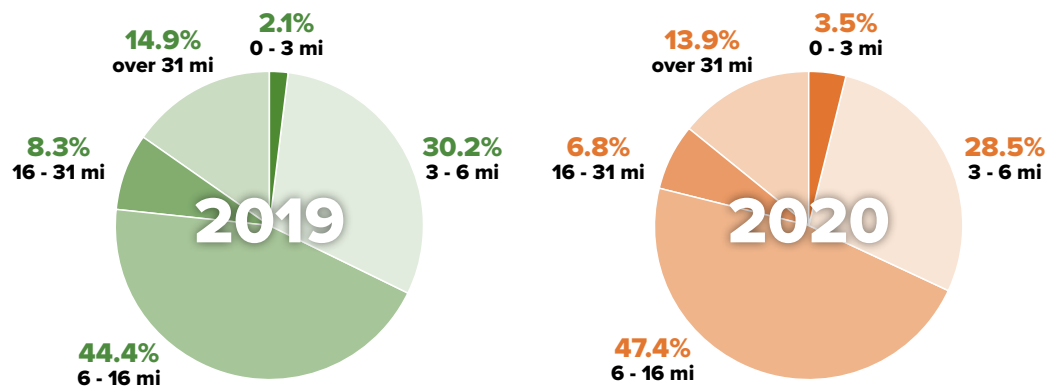
# Apollo Community Regional Park



## MONTHLY VISITORSHIP



## TRAVEL DISTANCE



## DEMOGRAPHICS

### EDUCATION

	High School Diploma	Some College, No Degree	Associates Degree	Bachelors Degree	Masters Degree & Above
2019	21.8%	22.5%	7.0%	10.7%	4.4%
2020	21.2%	22.8%	7.6%	10.9%	4.4%

### INCOME

	Less than \$24,999	\$25,000 - \$49,999	\$50,000 - \$74,999	\$75,000 - \$99,999	\$100,000 - \$124,999	More than \$125,000
2019	22.2%	18.8%	21.2%	13.7%	7.9%	16.2%
2020	21.1%	18.1%	21.9%	13.7%	8.6%	16.1%

### GENDER IDENTITY

	Male	Female
2019	48.3%	51.6%
2020	48.9%	51.1%

### RACE/ETHNICITY

	Amer-Indian	Asian	Black	Hispanic	White	2 or More	Other
2019	0.3%	5.8%	13.3%	40.6%	36.9%	2.7%	0.3%
2020	0.3%	4.7%	13.3%	39.8%	38.8%	2.8%	0.2%

### AGE

	18-29	30-39	40-49	50-59	60-69	70-79	80+
2019	24.1%	17.3%	17.6%	19.0%	12.3%	6.3%	3.4%
2020	23.4%	17.9%	17.6%	18.8%	13.0%	6.1%	3.3%

VISITORSHIP REPORT 2019 - 2020

# Devil's Punchbowl Natural Area



## VITAL STATISTICS



**KEY PARK AMENITIES**

- Nature Center
- Outdoor Performance Area
- Animal Exhibits
- Equestrian Facilities
- Hiking Trails
- Mountain Biking Trails
- Picnic Areas

**DESCRIPTION**

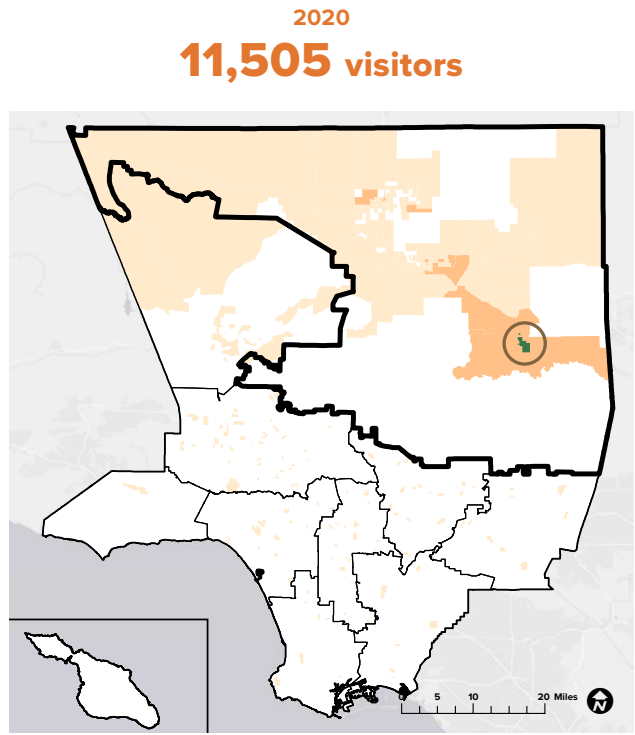
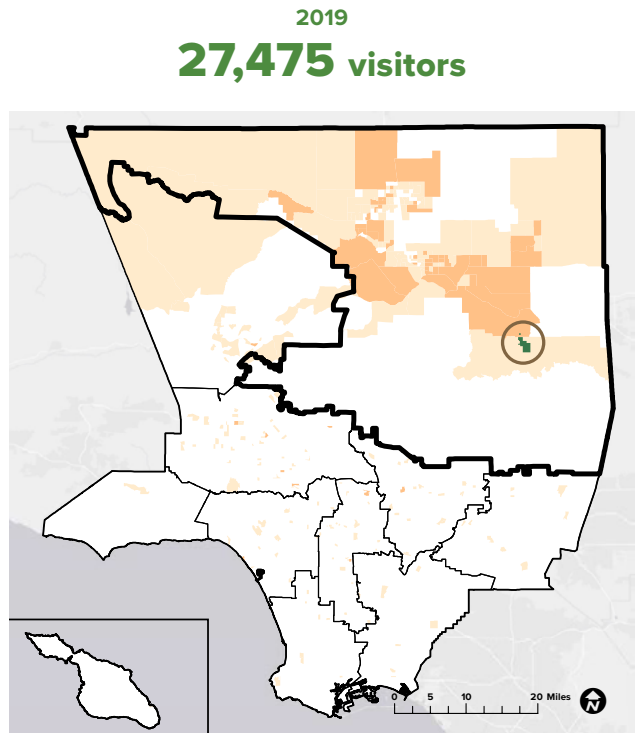
Devil's Punchbowl is situated within the San Gabriel Mountains. The 1,310-acre geological wonder has a 7.5-mile round-trip trail through a deep canyon formed by the runoff of large quantities of water from the higher San Gabriel Mountains where visitors can walk, mountain bike, hike or take a horseback ride. Visitors can participate in astronomy programs, bird walks, horseback riding, a junior ranger program, moonlight hikes, nature and plant walks or visit the Nature Center to learn about the native wildlife and park history. The park also includes amphitheaters, barbecue and picnic areas, a library, outdoor stages, restrooms, multipurpose rooms and museums.

Note: In September 2020, the Bobcat Fire destroyed over 30,000 acres of land, which included many parts of the Devil's Punchbowl Natural Area, including the Nature Center. As a result, the Devil's Punchbowl Natural Area was closed to the public from September 2020 to March 2022.

**WEBSITE**

[www.parks.lacounty.gov/devils-punchbowl-natural-area-and-nature-center/](http://www.parks.lacounty.gov/devils-punchbowl-natural-area-and-nature-center/)

## ANNUAL VISITORSHIP / VISITOR ORIGIN



<b>68%</b> originated from within LA County	<b>32%</b> originated from outside LA County	<b>49%</b> originated from Antelope Valley	<p> <span style="display: inline-block; width: 10px; height: 10px; background-color: #2e7d32; border: 1px solid black;"></span> Devil's Punchbowl Natural Area  <span style="display: inline-block; width: 10px; height: 10px; border: 1px solid black;"></span> Antelope Valley  <span style="display: inline-block; width: 10px; height: 10px; border: 1px solid black;"></span> Los Angeles County Regions         </p>	<p>0-100</p> <p>101-1,000</p> <p>1,001-5,000</p> <p>&gt;5,000</p>	<b>68%</b> originated from within LA County	<b>32%</b> originated from outside LA County	<b>44%</b> originated from Antelope Valley
--	---	---	--	---	--	---	---

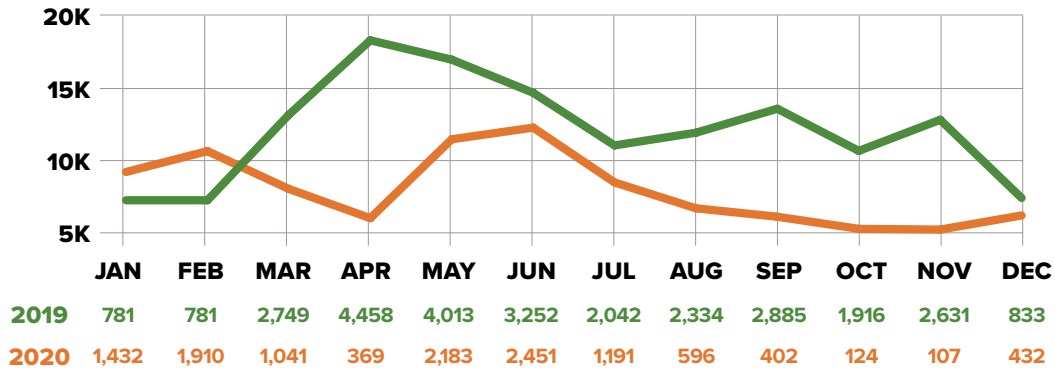
Sources: Unacast 2021 (LA County DPR 2020, LA County PNA 2016, ESRI 2021)

VISITORSHIP REPORT 2019 - 2020

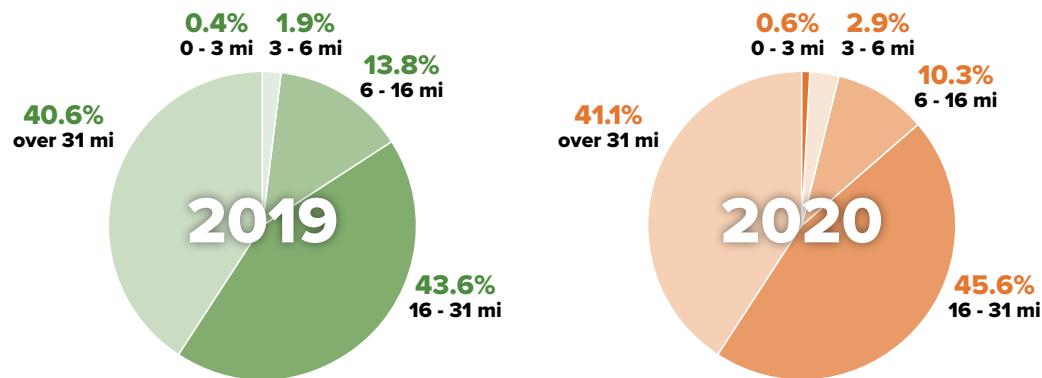
# Devil's Punchbowl Natural Area



## MONTHLY VISITORSHIP



## TRAVEL DISTANCE



## DEMOGRAPHICS

### EDUCATION

	High School Diploma	Some College, No Degree	Associates Degree	Bachelors Degree	Masters Degree & Above
2019	18.2%	21.4%	7.3%	12.6%	5.3%
2020	18.5%	20.8%	7.1%	13.6%	5.6%

### INCOME

	Less than \$24,999	\$25,000 - \$49,999	\$50,000 - \$74,999	\$75,000 - \$99,999	\$100,000 - \$124,999	More than \$125,000
2019	19.3%	20.1%	20.9%	12.3%	8.1%	18.9%
2020	19.2%	19.0%	21.0%	13.0%	8.8%	18.6%

### GENDER IDENTITY

	Male	Female
2019	48.7%	51.3%
2020	48.7%	51.3%

### RACE/ETHNICITY

	Amer-Indian	Asian	Black	Hispanic	White	2 or More	Other
2019	0.5%	7.1%	9.4%	40.8%	39.1%	2.6%	0.3%
2020	0.2%	9.0%	9.8%	41.8%	36.3%	2.4%	0.3%

### AGE

	18-29	30-39	40-49	50-59	60-69	70-79	80+
2019	25.2%	16.3%	17.5%	17.8%	13.0%	6.5%	3.7%
2020	23.3%	17.5%	19.0%	17.7%	12.5%	6.4%	3.5%

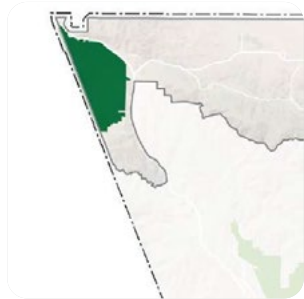


VISITORSHIP REPORT 2019 - 2020

# Hungry Valley State Vehicular Recreation Area



## VITAL STATISTICS



**KEY PARK AMENITIES**

- ATV Tracks
- Hiking Trails
- Group Picnic Areas
- Shade Ramadas
- Camping Sites

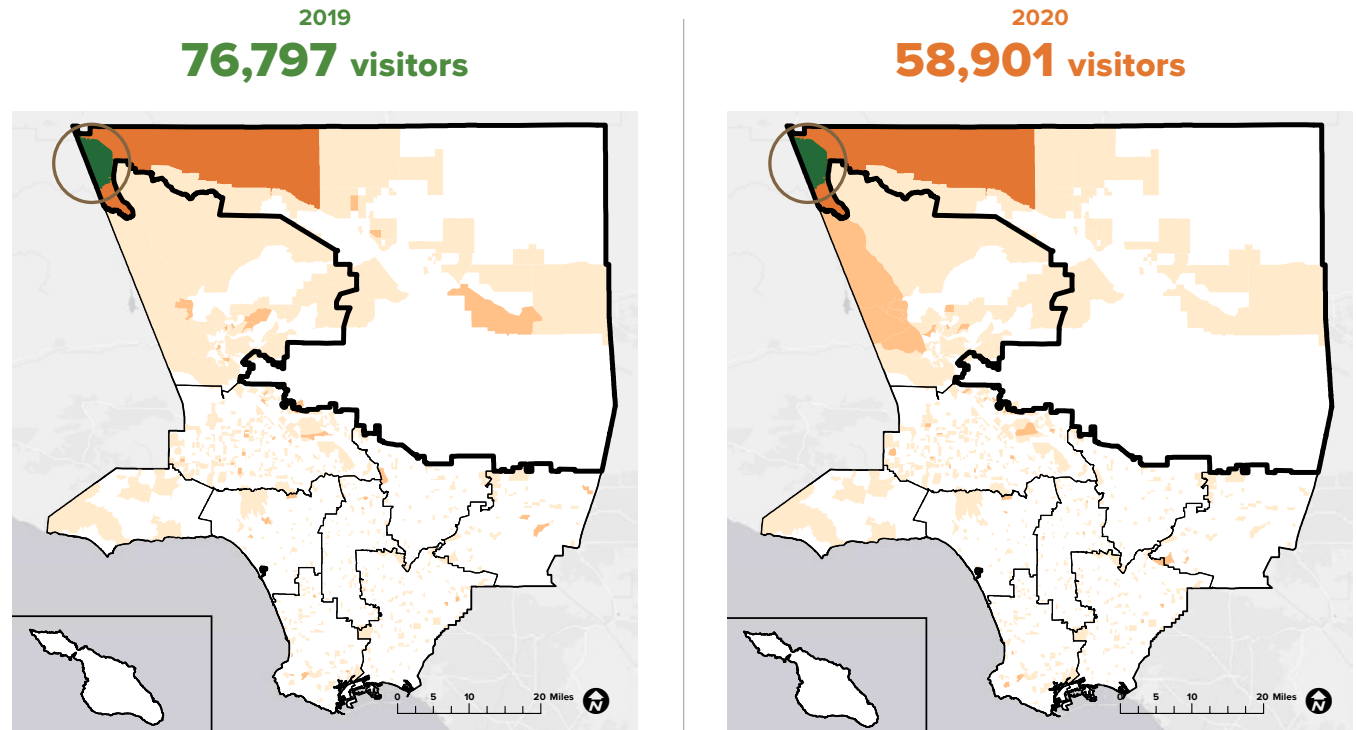
**DESCRIPTION**

Hungry Valley State Vehicular Recreation Area (SVRA) is a 19,000-acre park in Gorman. This SVRA has 10 campgrounds that provide shade ramadas, picnic areas, fire rings, restrooms and the Honey Valley Group Camp special event area. It is also home to a 60-acre Oak Woodland Preserve, where visitors can view valley oaks and native grasses. Off-highway vehicles can access 130 miles of scenic trails for motorcycles, All-Terrain Vehicles (ATV), dune buggies, and 4x4 recreation. Four-wheel drive enthusiasts can test out their skills at the 10-acre Aliklik Campground and motorcyclists can practice on the 15-acre adjacent track. Littles or beginning riders can learn the basics on the one-acre mini track near the Smith Forks Campground.

**WEBSITE**

[www.ohv.parks.ca.gov/?page\\_id=1192](http://www.ohv.parks.ca.gov/?page_id=1192)

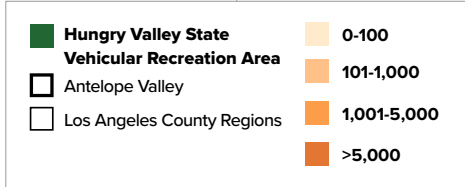
## ANNUAL VISITORSHIP / VISITOR ORIGIN



**51%**  
originated from within LA County

**49%**  
originated from outside LA County

**20%**  
originated from Antelope Valley



**52%**  
originated from within LA County

**48%**  
originated from outside LA County

**12%**  
originated from Antelope Valley

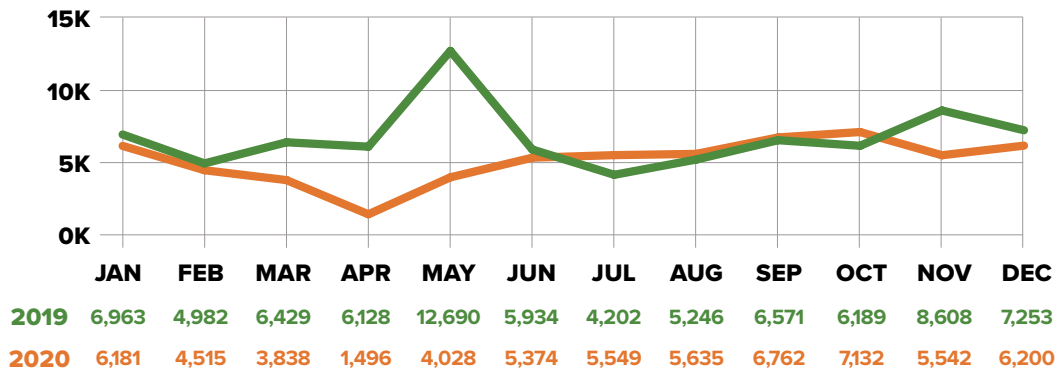
Sources: Unacast 2021 (LA County DPR 2020, LA County PNA 2016, ESRI 2021)

VISITORSHIP REPORT 2019 - 2020

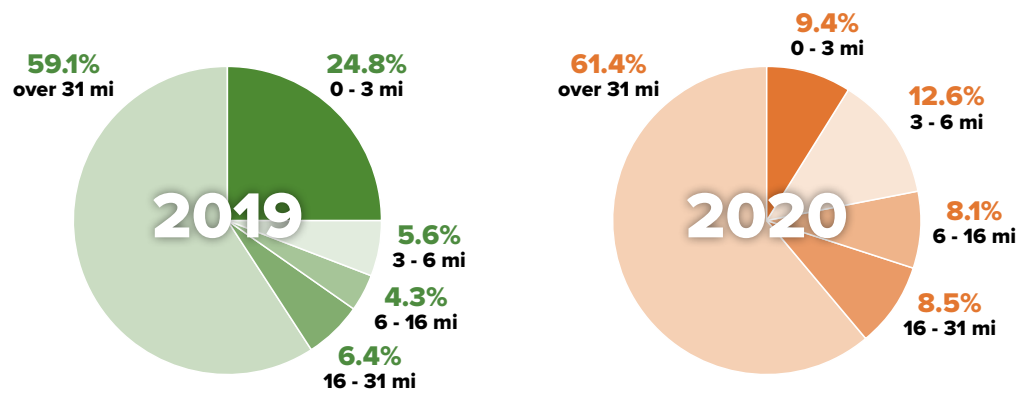
# Hungry Valley State Vehicular Recreation Area



## MONTHLY VISITORSHIP



## TRAVEL DISTANCE



## DEMOGRAPHICS

### EDUCATION

	High School Diploma	Some College, No Degree	Associates Degree	Bachelors Degree	Masters Degree & Above
2019	18.5%	21.9%	7.1%	14.1%	5.0%
2020	18.5%	22.9%	7.4%	15.7%	5.8%

### INCOME

	Less than \$24,999	\$25,000 - \$49,999	\$50,000 - \$74,999	\$75,000 - \$99,999	\$100,000 - \$124,999	More than \$125,000
2019	21.1%	13.9%	20.1%	11.8%	10.1%	21.8%
2020	21.3%	14.5%	20.0%	11.0%	9.0%	24.1%

### GENDER IDENTITY

	Male	Female
2019	50.8%	49.2%
2020	50.0%	50.0%

### RACE/ETHNICITY

	Amer-Indian	Asian	Black	Hispanic	White	2 or More	Other
2019	0.4%	7.6%	4.6%	29.9%	54.9%	2.3%	0.1%
2020	0.4%	8.3%	3.7%	34.3%	50.6%	2.2%	0.2%

### AGE

	18-29	30-39	40-49	50-59	60-69	70-79	80+
2019	23.1%	13.5%	15.5%	19.1%	15.2%	8.2%	5.4%
2020	19.5%	17.0%	17.1%	19.5%	14.1%	8.6%	4.3%

VISITORSHIP REPORT 2019 - 2020

# Placerita Canyon State Park



## VITAL STATISTICS

## ANNUAL VISITORSHIP / VISITOR ORIGIN



**KEY PARK AMENITIES**

- Nature Center
- Animal Exhibits
- Equestrian Facilities
- Hiking Trails
- Group Picnic Areas

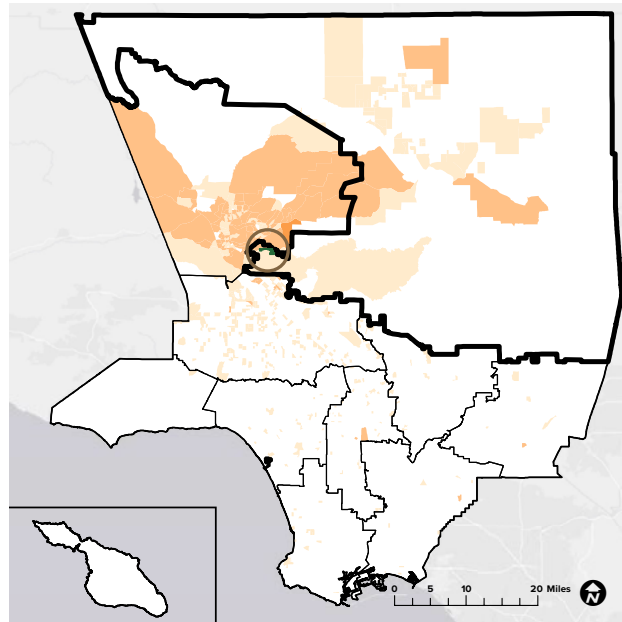
**DESCRIPTION**

Placerita Canyon State Park is a unique east-west running canyon featuring cool, shaded oak woodlands, chaparral-covered slopes and a seasonal stream. Located on the northwest side of the San Gabriel Mountains and surrounded by the Angeles National Forest, visitors can enjoy hiking trails that network over 12 miles, horseback riding, gift shops, museum tours, a picnic area, moonlight hikes, and nature and plant walks. This park is also the home of the famous "Oak of the Golden Dream" where gold was first discovered in California in 1842. Visitors can experience pioneer living at Walker Cabin, or enjoy a live animal presentation in the newly renovated nature center.

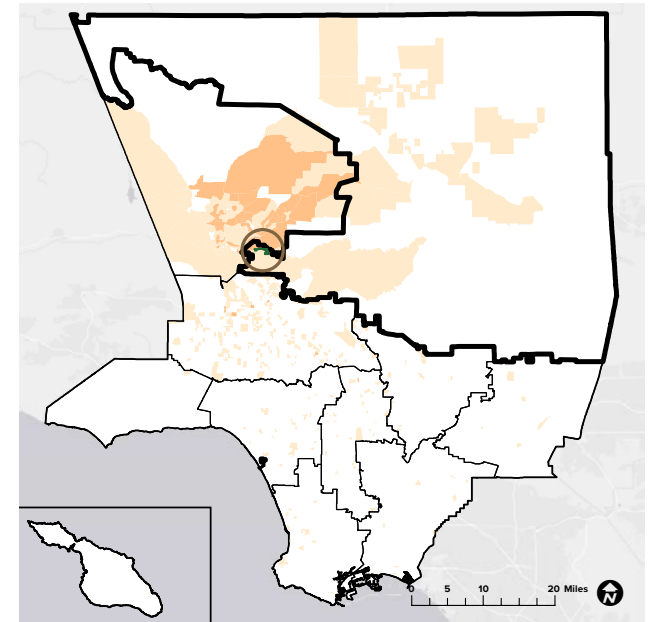
**WEBSITE**

[www.parks.lacounty.gov/placerita-canyon-state-park/](http://www.parks.lacounty.gov/placerita-canyon-state-park/)

2019  
**37,344** visitors



2020  
**22,294** visitors



**88%**  
originated from within LA County

**12%**  
originated from outside LA County

**5%**  
originated from Antelope Valley



**82%**  
originated from within LA County

**18%**  
originated from outside LA County

**4%**  
originated from Antelope Valley

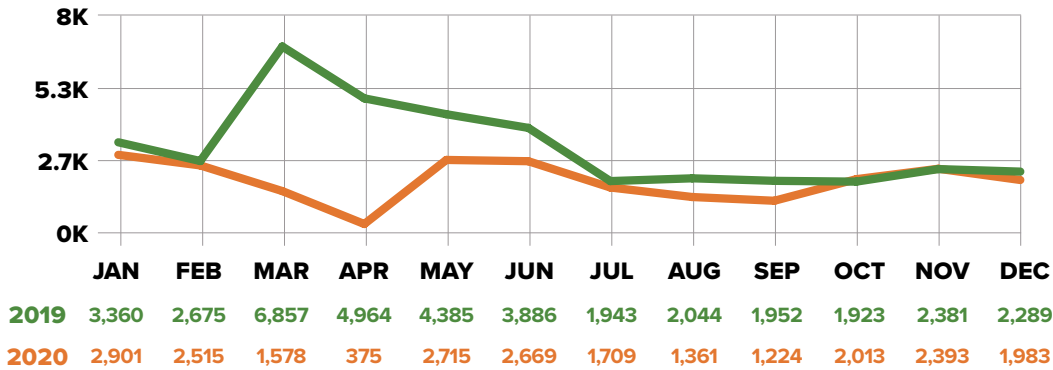
Sources: Unacast 2021 (LA County DPR 2020, LA County PNA 2016, ESRI 2021)

VISITORSHIP REPORT 2019 - 2020

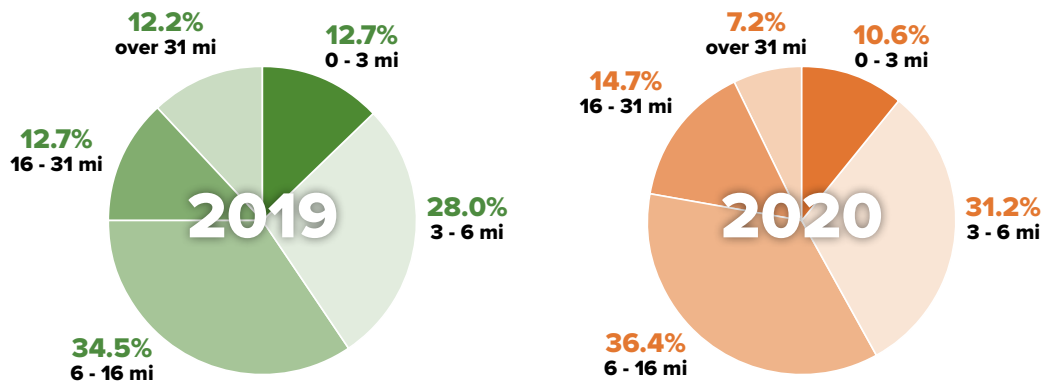
# Placerita Canyon State Park



## MONTHLY VISITORSHIP



## TRAVEL DISTANCE



## DEMOGRAPHICS

### EDUCATION

	High School Diploma	Some College, No Degree	Associates Degree	Bachelors Degree	Masters Degree & Above
2019	15.6%	21.7%	8.2%	19.7%	7.0%
2020	15.9%	21.9%	7.6%	20.2%	7.0%

### INCOME

	Less than \$24,999	\$25,000 - \$49,999	\$50,000 - \$74,999	\$75,000 - \$99,999	\$100,000 - \$124,999	More than \$125,000
2019	12.8%	13.2%	18.6%	13.6%	10.3%	31.4%
2020	13.7%	13.5%	18.4%	13.3%	10.5%	30.4%

### GENDER IDENTITY

	Male	Female
2019	49.2%	50.8%
2020	48.7%	51.2%

### RACE/ETHNICITY

	Amer-Indian	Asian	Black	Hispanic	White	2 or More	Other
2019	0.2%	10.7%	4.9%	33.3%	46.9%	3.6%	0.3%
2020	0.2%	11.3%	5.4%	34.0%	45.1%	3.5%	0.3%

### AGE

	18-29	30-39	40-49	50-59	60-69	70-79	80+
2019	25.2%	16.3%	17.5%	17.8%	13.0%	6.5%	3.7%
2020	23.3%	17.5%	19.0%	17.7%	12.5%	6.4%	3.5%

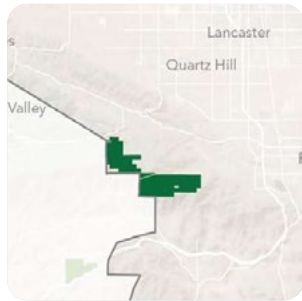
# VISITORSHIP REPORT 2019 - 2020

## Ritter Ranch



### VITAL STATISTICS

### ANNUAL VISITORSHIP / VISITOR ORIGIN



**KEY PARK AMENITIES**

- Hiking Trails
- Biking Trails
- Equestrian Trails

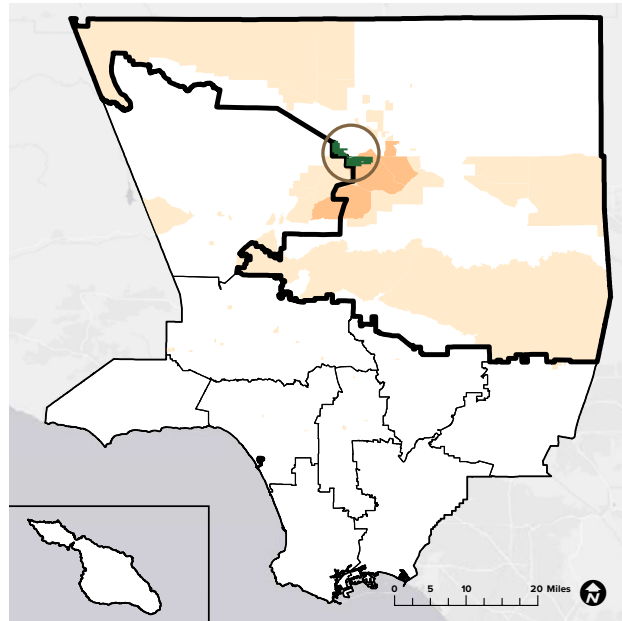
**DESCRIPTION**

Ritter Ranch Park is a 4,000-acre open space park in Palmdale, perched at the eastern end of the Sierra Pelona Mountains. With elevations ranging from 3,000 to 5,000 feet, this natural area contains plant communities indicative of convergence of desert, mountain and coastal influences. Visitors can enjoy horseback riding, mountain biking and hiking trails that are available throughout the park.

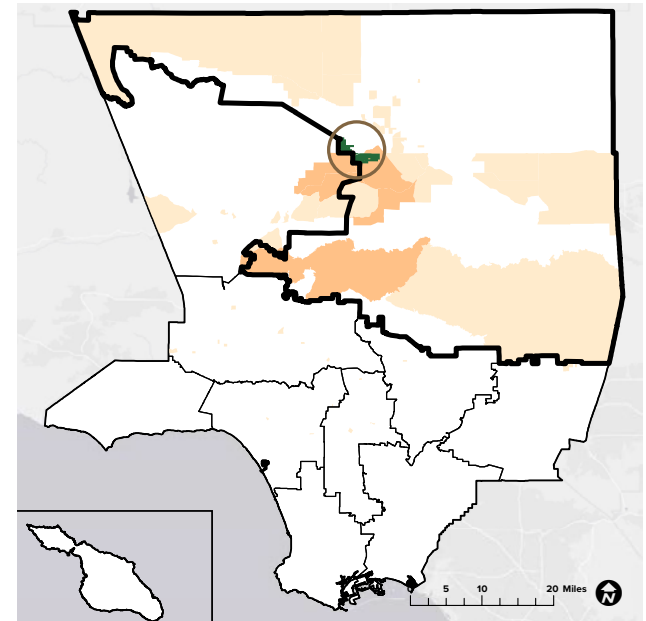
**WEBSITE**

[www.mrca.ca.gov/parks/park-listing/ritter-ranch/](http://www.mrca.ca.gov/parks/park-listing/ritter-ranch/)

2019  
**2,583** visitors



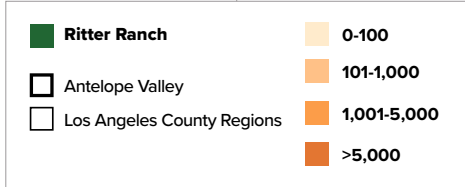
2020  
**2,444** visitors



**70%**  
originated from within LA County

**30%**  
originated from outside LA County

**32%**  
originated from Antelope Valley



**71%**  
originated from within LA County

**29%**  
originated from outside LA County

**36%**  
originated from Antelope Valley

Sources: Unacast 2021 (LA County DPR 2020, LA County PNA 2016, ESRI 2021)

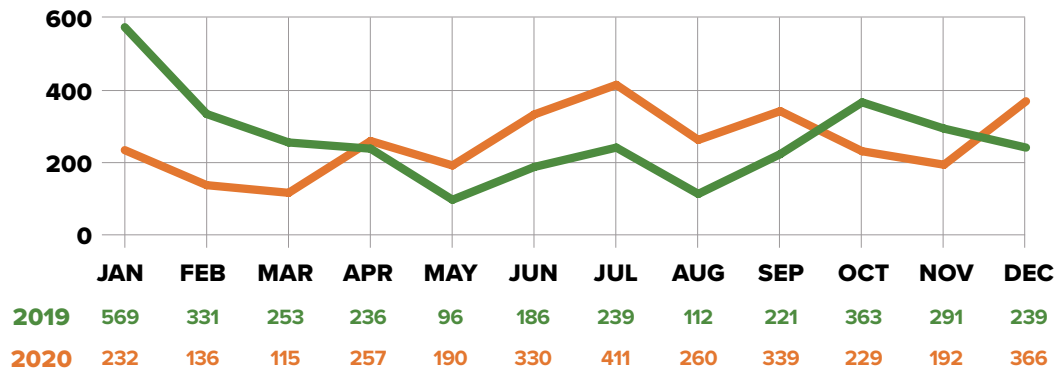


VISITORSHIP REPORT 2019 - 2020

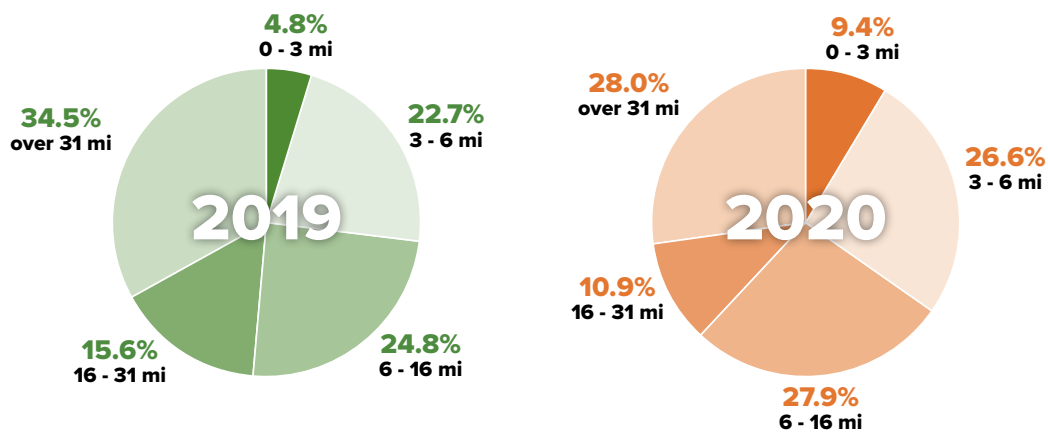
# Ritter Ranch



## MONTHLY VISITORSHIP



## TRAVEL DISTANCE



## DEMOGRAPHICS

### EDUCATION

	High School Diploma	Some College, No Degree	Associates Degree	Bachelors Degree	Masters Degree & Above
2019	18.4%	21.3%	6.7%	14.3%	6.8%
2020	17.1%	24.6%	7.7%	15.9%	7.6%

### INCOME

	Less than \$24,999	\$25,000 - \$49,999	\$50,000 - \$74,999	\$75,000 - \$99,999	\$100,000 - \$124,999	More than \$125,000
2019	16.3%	15.9%	20.0%	13.1%	10.4%	24.3%
2020	15.9%	12.0%	17.5%	14.1%	9.0%	31.6%

### GENDER IDENTITY

	Male	Female
2019	48.8%	51.2%
2020	50.8%	49.2%

### RACE/ETHNICITY

	Amer-Indian	Asian	Black	Hispanic	White	2 or More	Other
2019	0.2%	6.1%	5.2%	36.0%	48.3%	3.8%	0.3%
2020	0.3%	5.8%	4.5%	26.8%	59.4%	3.2%	0.1%

### AGE

	18-29	30-39	40-49	50-59	60-69	70-79	80+
2019	24.0%	15.6%	15.4%	20.3%	16.0%	5.7%	3.1%
2020	19.9%	14.6%	15.1%	22.9%	16.5%	7.3%	3.8%

# COMMUNITY ENGAGEMENT THEMES

## BARRIERS RESIDENTS EXPERIENCE TO USING REGIONAL PARKS AND FACILITIES



### EXTREME WEATHER

Hot summers and cold winters in the Antelope Valley make outdoor recreation activities difficult many months of the year.



### LACK OF SHADE

Without shade, many parks are unusable during hot months.



### DISTANCE

Many park amenities are not available nearby.



### LACK OF TRANSIT

Public transit wait and travel times to parks can be up to two hours or more and there are few options for carpooling or shuttles.



### LACK OF INFORMATION

Residents do not know where parks are located, what facilities are available, or how to use and get to amenities, like campsites.



### SAFETY

Concern about unhoused people in the park, as well as pandemic safety precautions like social distancing and mask wearing in parks.



### LIMITED ADA ACCESSIBILITY

Nature centers and other facilities are not accessible to disabled and older residents.



### LACK OF CONNECTIVITY

Not enough trail networks or safe biking and pedestrian options.



### LACK OF RECREATION FACILITIES

There is a need for more swimming pools and indoor recreation spaces.



### LACK OF OUTDOOR RECREATION AREAS

There is a lack of trails, pet-friendly areas, campsites and affordable water-based recreation.

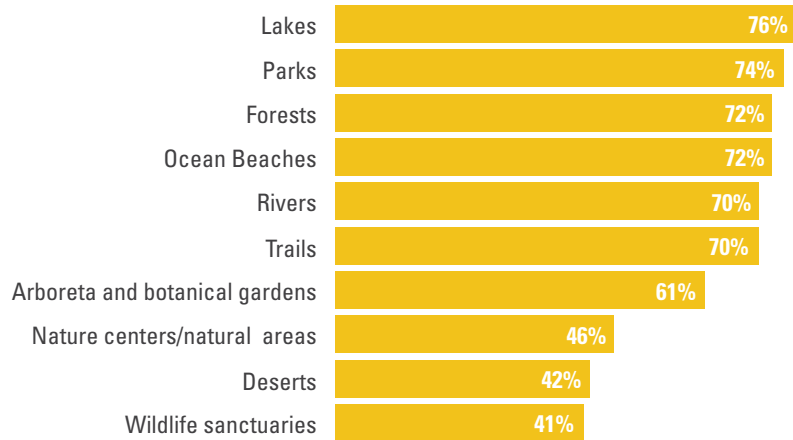
“Living in the high desert in the Antelope Valley we must be prepared for the harsh weather conditions during summer and winter.”

“Regional Parks and natural areas are too far away.”

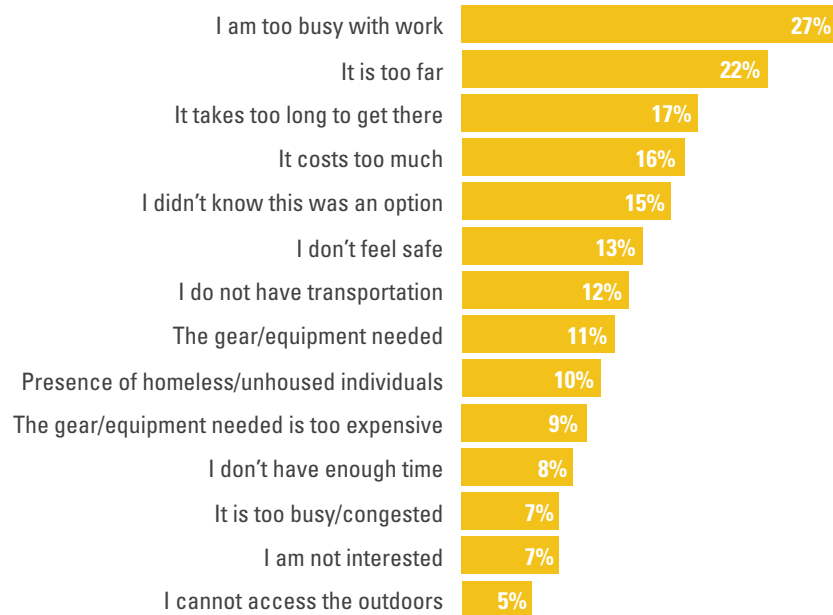
“Friends and family without vehicles have to wait two hours or more for transit to a park.”

► *Residents Regional Parks Use and Activities*

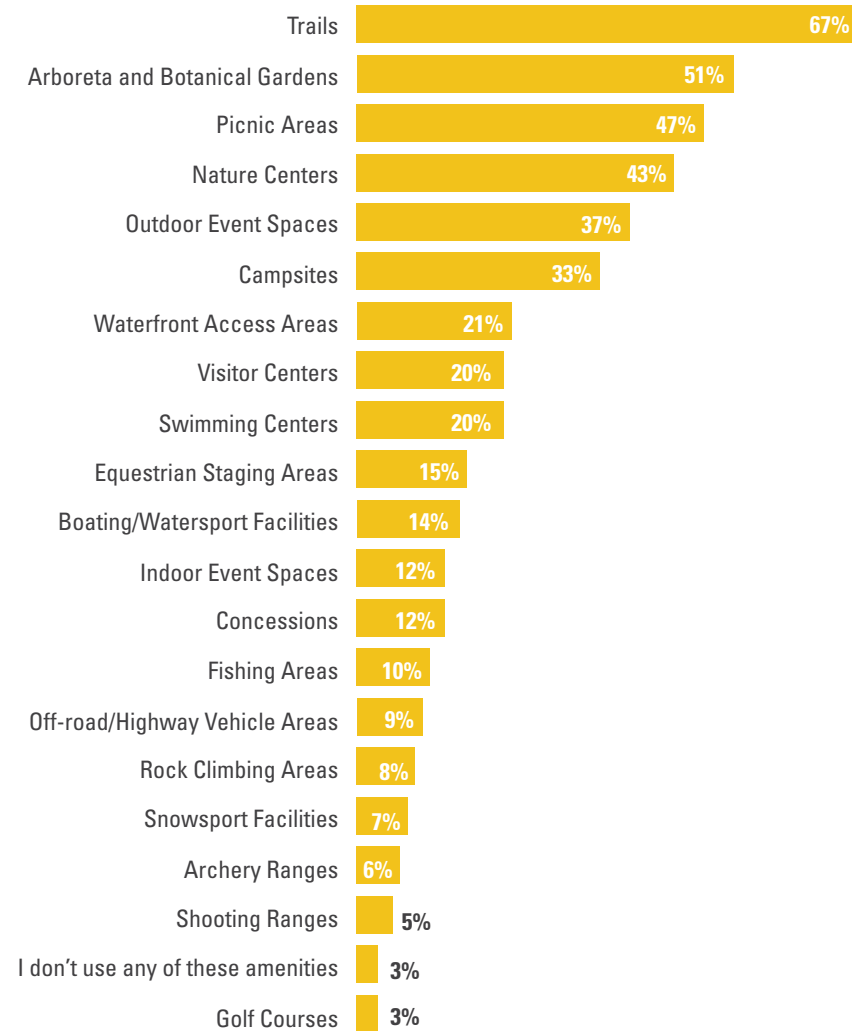
**I visit these types of regional parks and facilities the most...**



**I can't go outside or to parks because...**



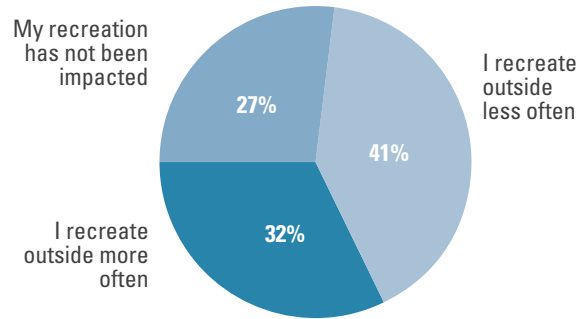
**I use these regional park amenities most often:**



Appendix A | Antelope Valley

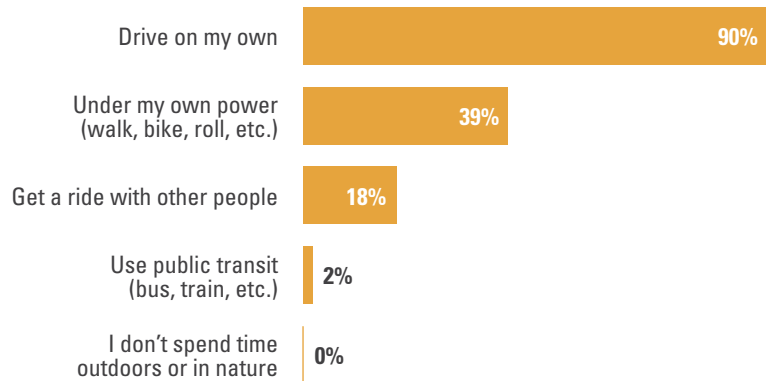
► Covid-19 Impacts on Recreation for Residents in the Antelope Valley

**COVID has affected how I recreate...**

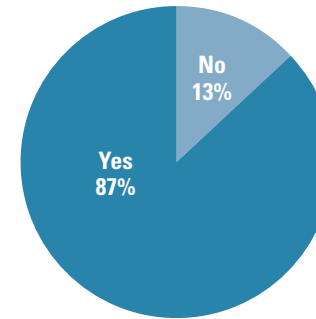


► Travel to Parks

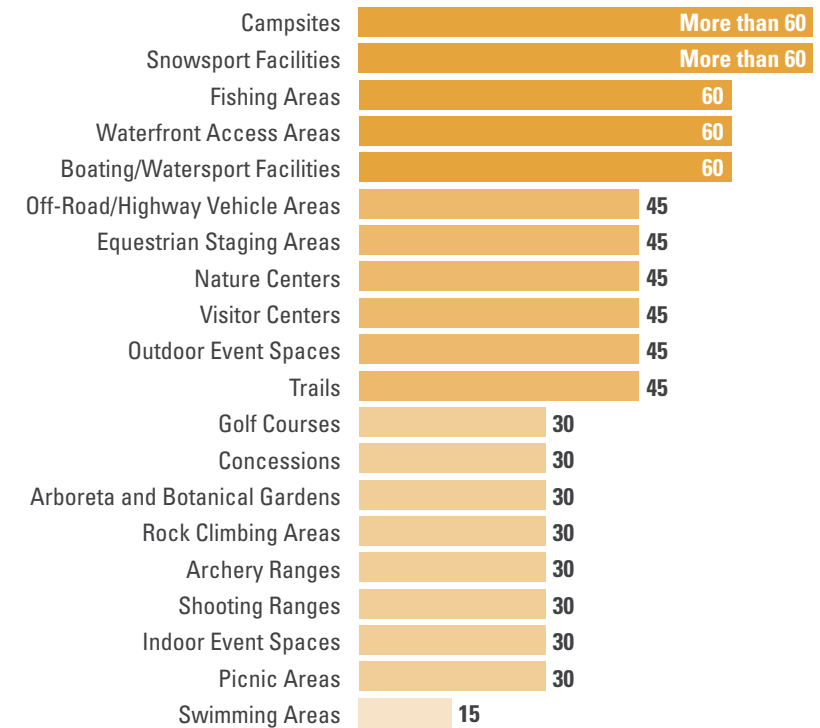
**When I travel to parks, these are all the ways I get there...**



**Because of COVID I am looking for recreation opportunities closer to home...**

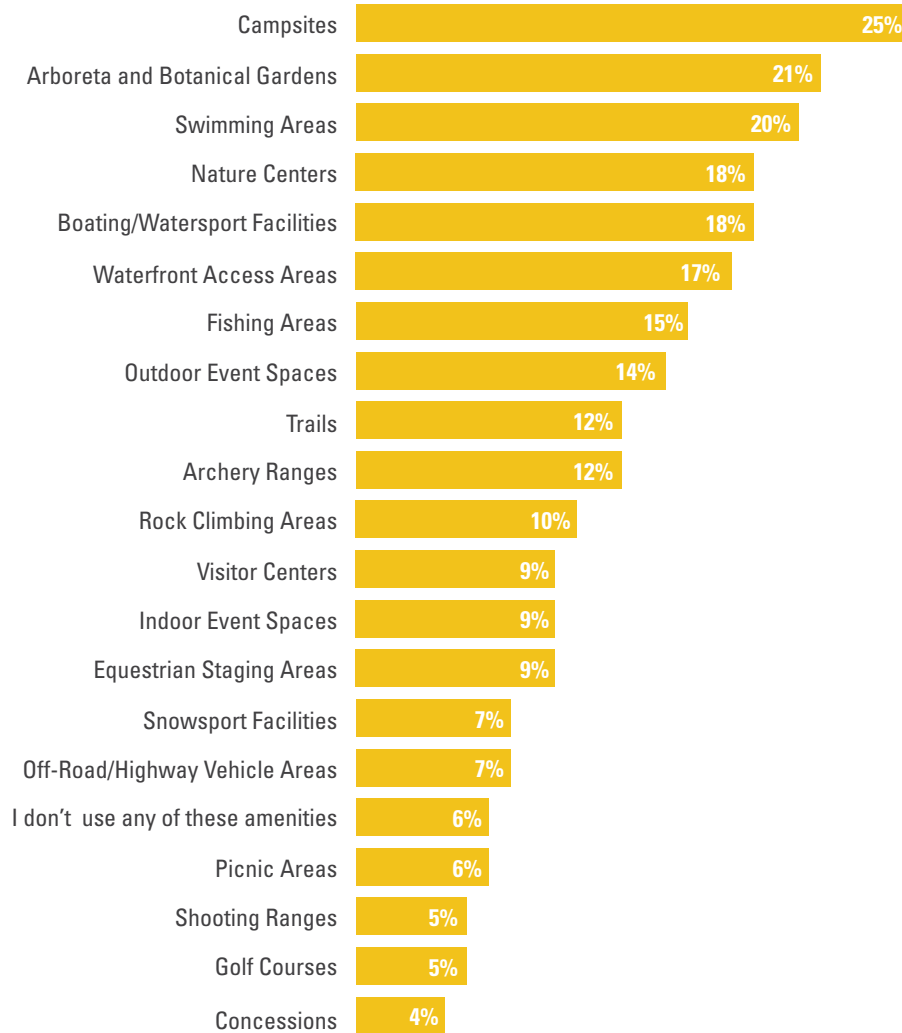


**I'm willing to travel this many minutes to parks and amenities...**



► *Regional Parks Needs in the Antelope Valley*

**The greatest parks needs in my community include...**



► *Quality of Regional Park Amenities in the Antelope Valley*

**These amenities received the highest rate of good, fair or poor quality ratings from respondents...**

**Good**

Arboreta and Botanical Gardens	72%
Golf Courses	67%
Trails	63%
Off-Road/Highway Vehicle Areas	60%
Rock Climbing Areas	56%

**Fair**

Indoor Event Spaces	43%
Waterfront Access Areas	42%
Campsites	39%
Snowsport Facilities	38%
Nature Centers	37%

**Poor**

Shooting Ranges	83%
Archery Ranges	57%
Fishing Areas	45%
Swimming Areas	43%
Equestrian Staging Areas	41%



# COMMUNITY ENGAGEMENT THEMES

## COMMUNITY SUGGESTIONS TO INCREASE AND IMPROVE VISITS TO REGIONAL PARKS AND FACILITIES



### MORE SHADE

More shade structures in gathering and playground spaces.



### ACCESS TO WATER

Water fountains for users and animals in parks and along trails, more splash pads and water features for cooling off, better access to lakes, rivers and streams in the area and improved existing natural water features like area wetlands.



### TRANSIT OPTIONS

Provide free and more frequent transit to the beach and to nearby parks.



### ENHANCED SAFETY MEASURES

Provide more patrols on trails, at event spaces and visitor centers. Ensure visitors are adhering to social distancing and other protective measures during the pandemic.



### ADDRESS HOMELESSNESS

Expand Services to support unhoused people who use parks.



### BETTER ACCESS TO INFORMATION

More information about events at Regional Parks, available amenities and opportunities to provide input.



### LIGHTING

Expand lighting at parks and facilities, especially at night.



### ADA ACCESSIBILITY

Provide wheelchair and disabled accessible trails and facilities, including restrooms.



### EXPAND NATIVE AMERICAN ACCESS AND EDUCATION

Provide access to ceremonial spaces for gatherings and events and provide spaces for indigenous-led education centers and activities.



### EXPAND COMMUNITY EVENTS

Open up park spaces for the community to hold more events and provide opportunities to stream park events online.



### IMPROVED MAINTENANCE AND INFRASTRUCTURE

Clean restrooms, trails and campsites, provide more picnic tables and seating. Provide wi-fi and electric vehicle charging stations for users.



### BETTER ACCESS TO PROGRAMS

Improve and standardize the online reservation system, gather community input to improve the variety of recreation classes, and provide affordable equipment and classes for all ages, especially youth and seniors.



### EXPAND CONCESSIONS

Allow local food vendors and set up more hydration locations in parks and facilities.



### MORE RECREATION FACILITIES

Extend facilities hours, provide more outdoor equipment and indoor recreation spaces, and build additional parks, courts and swimming facilities to meet demand.



### MORE FACILITIES FOR EQUESTRIAN USE

Parking for horse trailers at equestrian staging areas and trailheads, and places to hold equestrian events.



### DEDICATED USE TRAILS

Provide separate trails for hiking, biking, equestrian use to help mitigate conflict and increase safety for all users along trails.



### ENHANCE CONNECTIVITY

Provide greenways and trail networks that connect parks and provide safe transportation corridors for bicyclists, equestrians and pedestrians.



### EXPAND GREENSPACE

More trees, native habitat gardens, natural open space and wildlife sanctuaries.



### PARTNERSHIPS WITH COMMUNITY ORGANIZATIONS

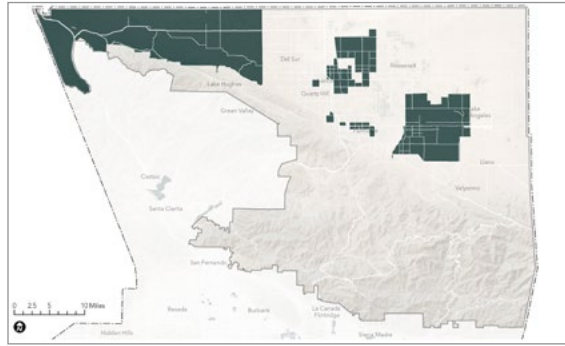
Expand park use and greenspace access through school and community partnerships.

**“There should be more pools in the low income areas in Antelope Valley since it gets so hot in the summer and the public pools are not accessible by all. Having a place for more sport activities will ... build [a] sense of teamwork and community.”**

**“The Antelope Valley is underserved with outdoor recreational activities. I realize lakes and rivers don’t just magically appear, but there are hardly any trails, pet-friendly recreation areas, campsites, etc. anywhere near the AV.”**

# REGIONAL RECREATION PRIORITY ANALYSIS

## Areas Experiencing the Highest Levels of Barriers and Vulnerability



**High Levels  
of Social and  
Transportation  
Barriers**



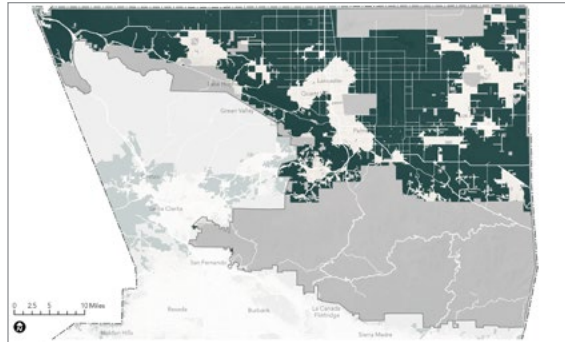
**High Levels  
of Health and  
Environmental  
Vulnerability**

### Legend

- Areas of Moderate to High Vulnerability Across All Four Dimensions
- Antelope Valley Regional Study Area
- Los Angeles County
- Major Roads

Map source: HPI, 2021; 2021 RRE Inventory

## Areas Located in Low Proximity to Regional Recreation Sites



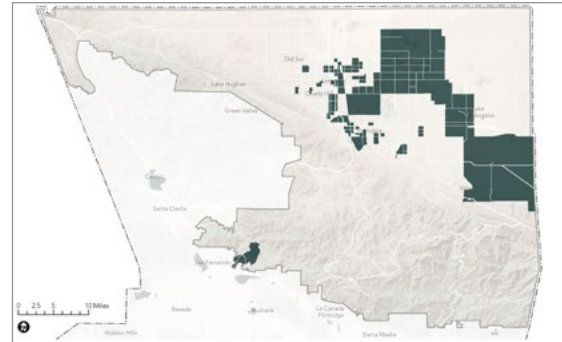
**Low  
Proximity  
to Regional  
Recreation  
Sites**

### Legend

- Areas in Low Proximity to Regional Recreation Facilities (beyond a 2.5-mile bicycle ride to any Regional Recreation Park Entry Points, Nature-Based Recreation Area Entry Points or Trailheads and Access Points)
- Regional Site Inventory
- Antelope Valley Regional Study Area
- Los Angeles County
- Major Roads

Map source: Unacast, 2021; 2021 RRE Inventory

## Areas With Low Visitorship Rates to Regional Recreation Sites



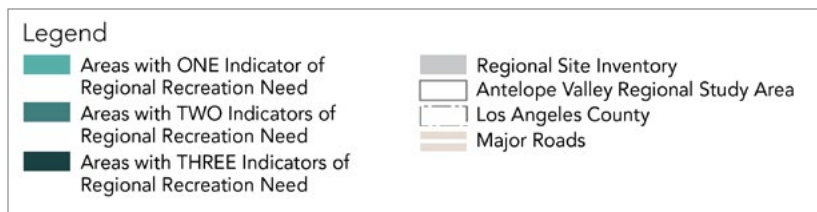
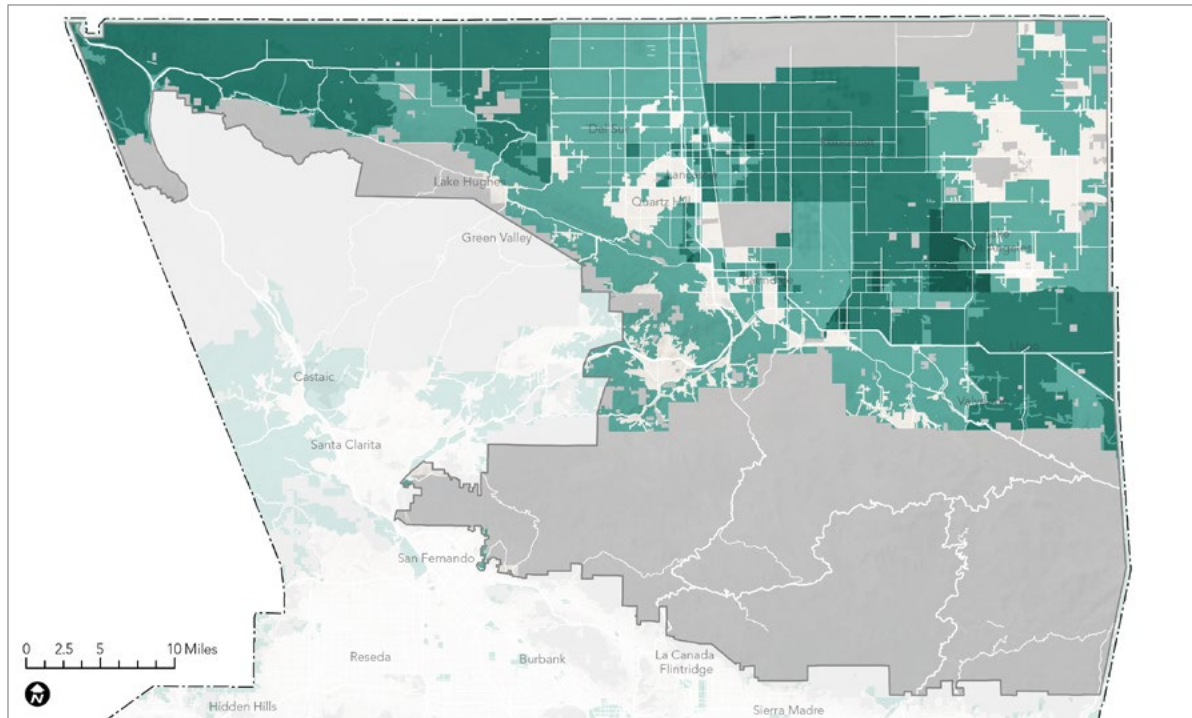
**Low Visitorship  
Rates to  
Regional  
Recreation  
Sites**

### Legend

- Areas with Low Visitorship Rates (less than one observed visit per resident over the two-year period)
- Antelope Valley Regional Study Area
- Los Angeles County
- Major Roads

Map source: ArcGIS StreetMap Premium, 2021; 2021 RRE Inventory

# REGIONAL RECREATION PRIORITY AREAS



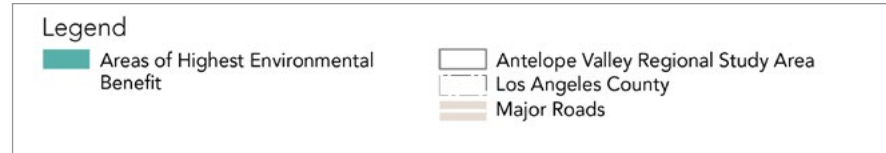
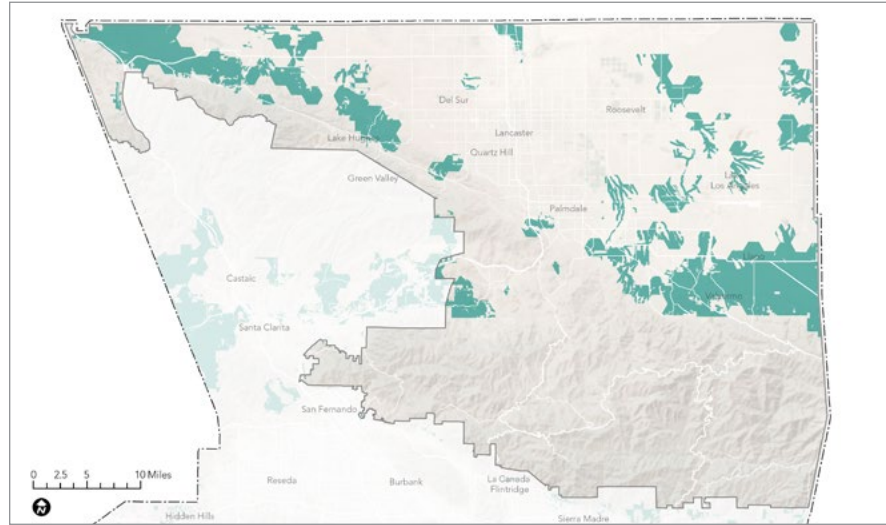
Areas with:



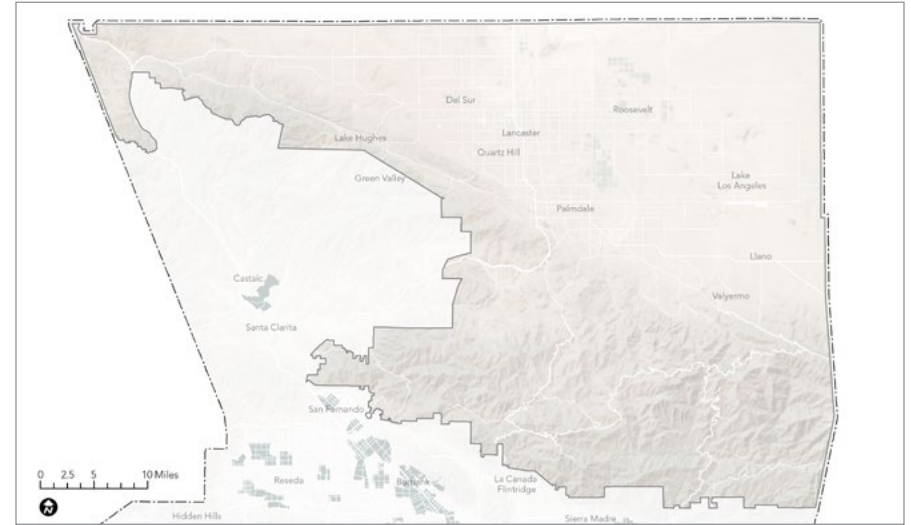
Map source: HPI, 2021; Unacast, 2021; ArcGIS StreetMap Premium, 2021; 2021 RRE Inventory

# ENVIRONMENTAL CONSERVATION AND RESTORATION PRIORITY AREAS

Priority Areas for Conservation



Priority Areas for Restoration



Maps source: CDFW ACE, 2021; USGS, 2021; COEHHA, 2021; CalFire FRAP 2015