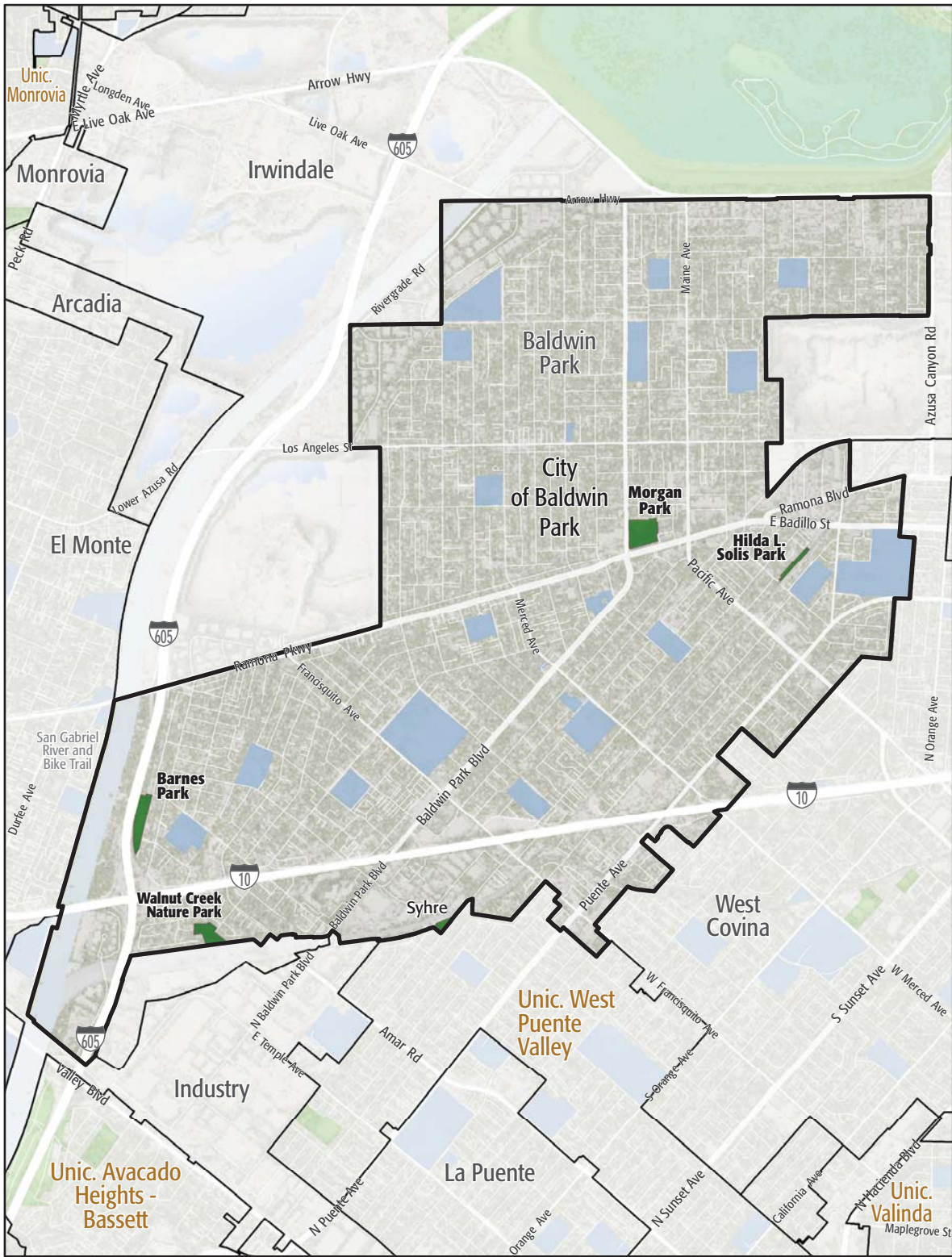


4. STUDY AREA BASE MAP



City of Baldwin Park

- Existing Park
- Existing Park Outside Study Area
- Existing School
- Other Open Space

6. PARK METRICS



PARK LAND: Is there enough park land for the population?

21.1 PARK ACRES
within study area

76,853
POPULATION

0.3 PARK ACRES
PER 1,000

The county average is 3.3 park acres per 1,000

PARK ACCESSIBILITY:
Is park land located where
everyone can access it?

22% of population living
WITHIN 1/2 MILE
of a park

The county average is 49% of the population living
within 1/2 mile of a park

PARK PRESSURE

How much park land is available to residents in the area around each park?

Barnes Park (6.57 Acres)
0.53 park acres per 1,000

Hilda L. Solis Park (1.96 Acres)
0.15 park acres per 1,000

Morgan Park (8.06 Acres)
0.24 park acres per 1,000

Syhre Park (1.37 Acres)
0.07 park acres per 1,000

Walnut Creek Nature Park (4.56 Acres)
0.94 park acres per 1,000

WHERE ARE PARKS MOST NEEDED?

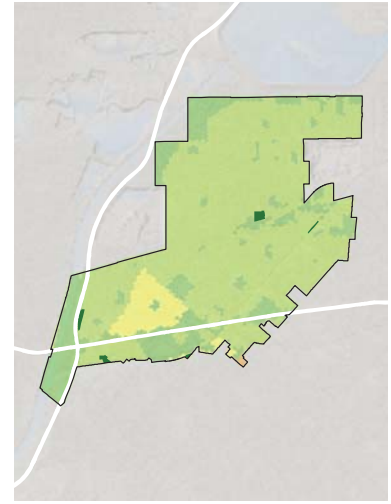
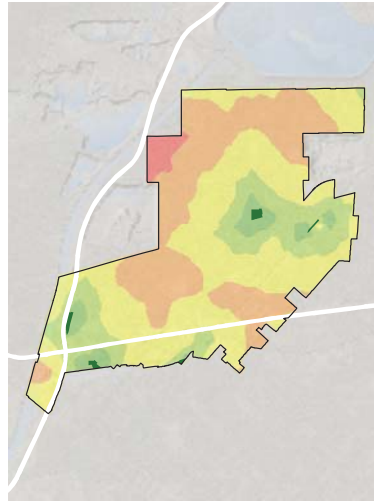
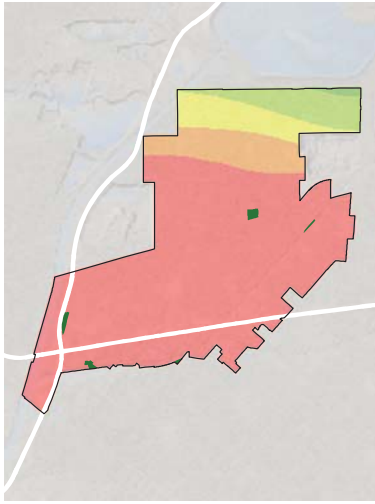
PARK ACRE NEED

+

DISTANCE TO PARKS

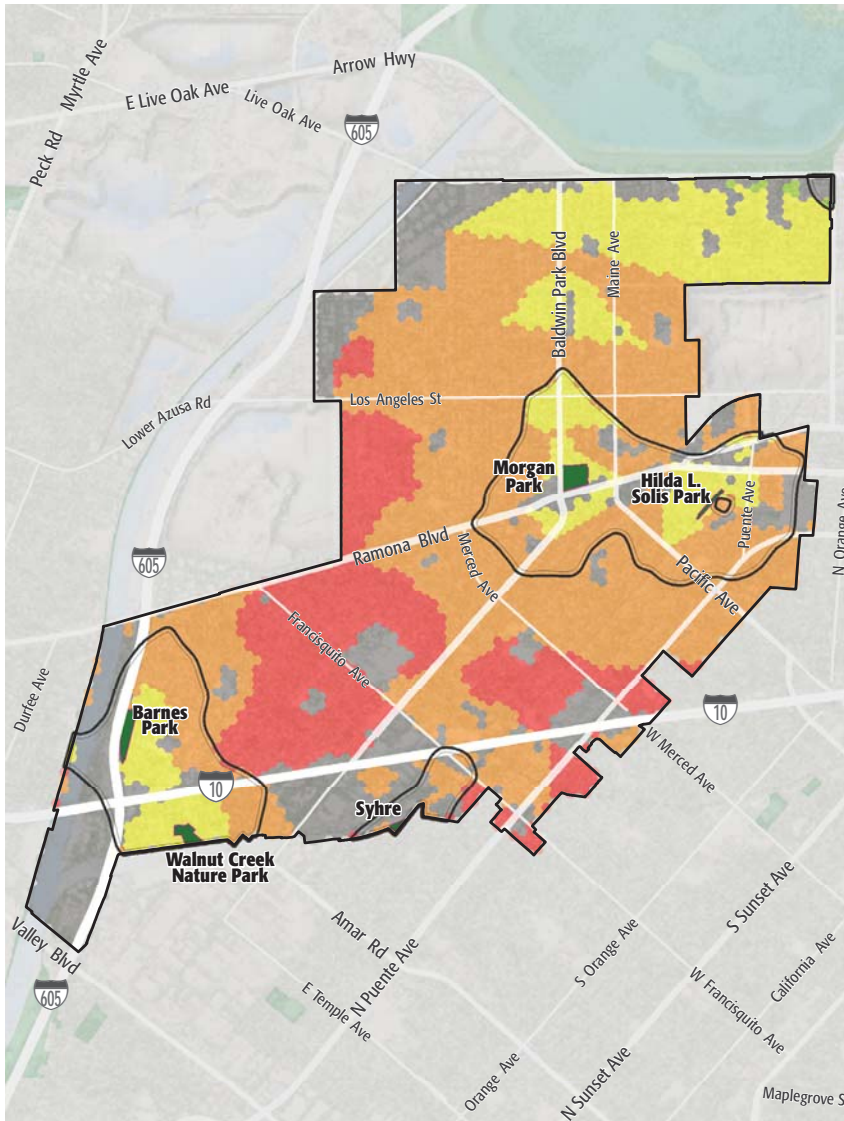
+

POPULATION DENSITY



= PARK NEED

*Calculated using the following weighting: (20% x Park Acre Need) + (20% x Distance to Parks) + (60% x Population Density)



PARK NEED CATEGORY

- Very High
- High
- Moderate
- Low
- Very Low
- No Population
- Area within 1/2 mile walk of a park

HOW MANY PEOPLE NEED PARKS?

