



City of Manhattan Beach

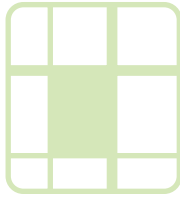
STUDY AREA PROFILE

STUDY AREA ID #178

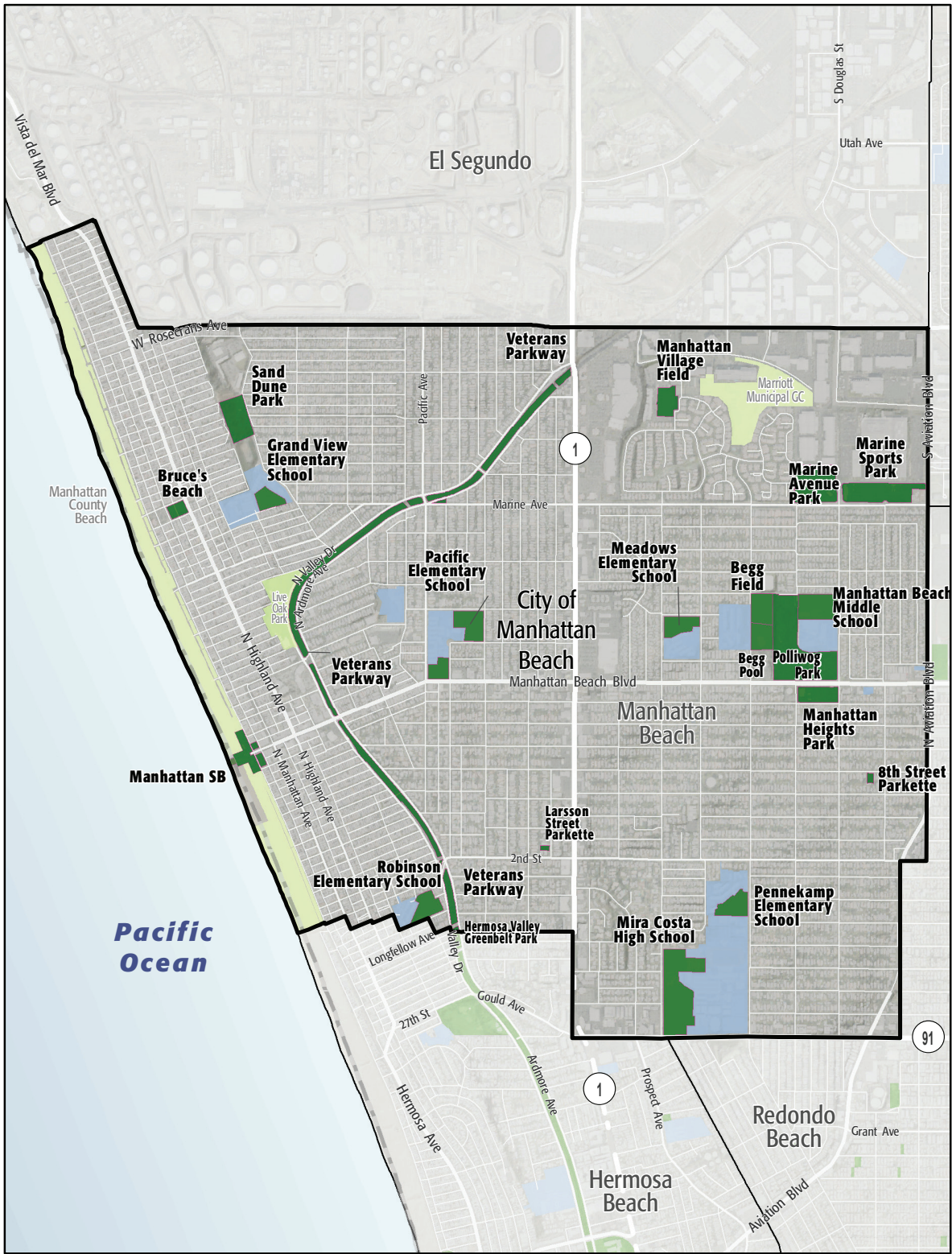
- BASE MAP
- PARK METRICS
- WHERE ARE PARKS MOST NEEDED
- AMENITY QUANTITIES AND CONDITIONS
- PARK NEEDS FRAMEWORK
- COST ESTIMATES

Note: This Study Area did not hold a community workshop.





STUDY AREA BASE MAP



- City of Manhattan Beach
- Existing Park

Existing Park Outside Study Area

Existing School

Other Open Space

6. PARK METRICS



PARK LAND: Is there enough park land for the population?

111.9 PARK ACRES
within study area

35,476
POPULATION

3.2 PARK ACRES
PER 1,000

The county average is 3.3 park acres per 1,000

PARK ACCESSIBILITY: Is park land located where everyone can access it?

95% of population living
WITHIN 1/2 MILE
of a park

The county average is 49% of the population living
within 1/2 mile of a park

PARK PRESSURE

How much park land is available to residents in the area around each park?

8th Street Parkette (0.34 Acres)
0.2 park acres per 1,000

Begg Field (3.32 Acres)
11.1 park acres per 1,000

Begg Pool (2.88 Acres)
11.97 park acres per 1,000

Bruce's Beach (1.24 Acres)
0.53 park acres per 1,000

Grand View Elementary School (2.29 Acres)
3.03 park acres per 1,000

Larsson Street Parkette (0.23 Acres)
0.15 park acres per 1,000

Manhattan Beach Middle School (5.1 Acres)
21.04 park acres per 1,000

Manhattan Heights Park (3.16 Acres)
3.89 park acres per 1,000

Manhattan SB (5.49 Acres)
4.15 park acres per 1,000

Manhattan Village Field (2.78 Acres)
2.88 park acres per 1,000

Marine Avenue Park (7.7 Acres)
10.6 park acres per 1,000

Marine Sports Park (7.11 Acres)
7.56 park acres per 1,000

Meadows Elementary School (2.99 Acres)
1.6 park acres per 1,000

Mira Costa High School (12.27 Acres)
6.62 park acres per 1,000

Pacific Elementary School (5.75 Acres)
2.17 park acres per 1,000

Pennekamp Elementary School (3.12 Acres)
1.4 park acres per 1,000

Polliwog Park (16.39 Acres)
20.15 park acres per 1,000

Robinson Elementary School (2.96 Acres)
1.73 park acres per 1,000

Sand Dune Park (5.17 Acres)
1.18 park acres per 1,000

Veterans Parkway (21.64 Acres)
2.28 park acres per 1,000

WHERE ARE PARKS MOST NEEDED?

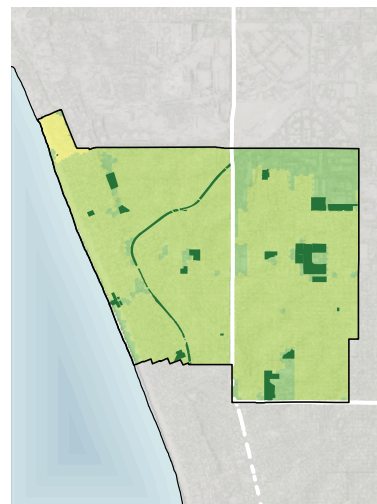
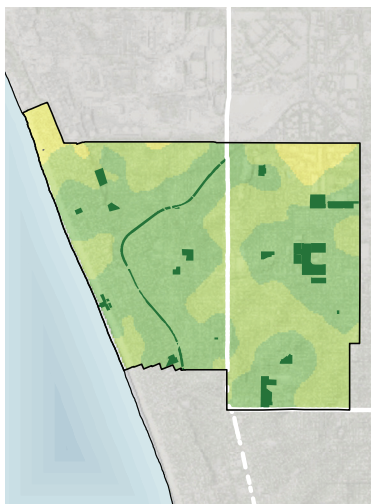
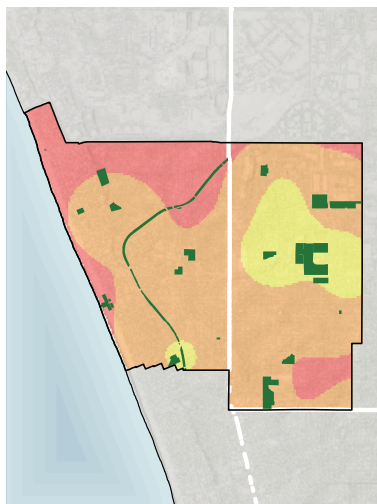
PARK ACRE NEED

+

DISTANCE TO PARKS

+

POPULATION DENSITY



= PARK NEED

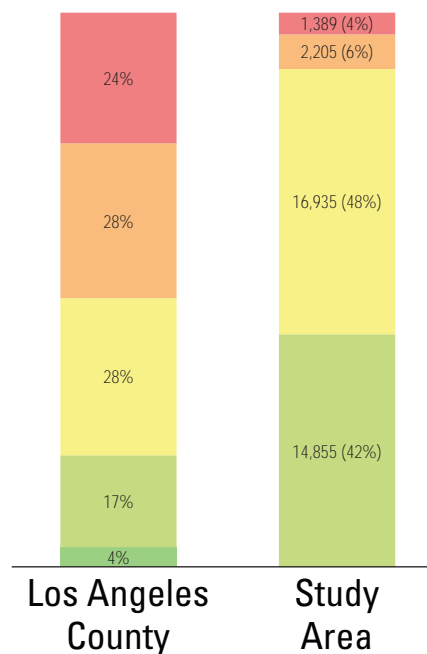
*Calculated using the following weighting: (20% x Park Acre Need) + (20% x Distance to Parks) + (60% x Population Density)



PARK NEED CATEGORY

- Very High
- High
- Moderate
- Low
- Very Low
- No Population
- Area within 1/2 mile walk of a park

HOW MANY PEOPLE NEED PARKS?



AMENITY QUANTITIES AND CONDITIONS

Park Name	Condition	General Infrastructure Condition	Open Lawn/ Turf Area	Amenities																
				Tennis Courts	Basketball Courts	Baseball Fields	Soccer Fields	Multipurpose Fields	Fitness Zones	Skate Parks	Picnic Shelters	Playgrounds	Swimming Pools	Splash Pads	Dog Parks	Gymnasiums	Community/Rec Centers	Senior Centers	Restrooms	Total
8th Street Parkette	Good																			0
	Fair											1								1
	Poor																			0
Begg Field	Good					1	1													2
	Fair																			0
	Poor																			0
Begg Pool	Good																			0
	Fair																			0
	Poor												1							1
Bruce's Beach	Good																			0
	Fair				1															1
	Poor																			0
Grand View Elementary School	Good				2		1													3
	Fair						1					1								2
	Poor																			0
Larsson Street Parkette	Good																			0
	Fair				1							1								2
	Poor																			0

AMENITY CONDITIONS SUMMARY



8th Street Parkette



Begg Field



Begg Pool



Bruce's Beach



Grand View Elementary School

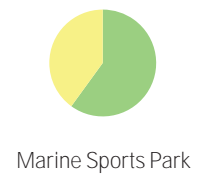
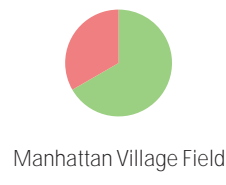
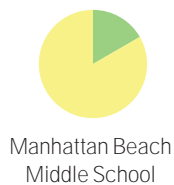


Larsson Street Parkette

AMENITY QUANTITIES AND CONDITIONS

Park Name	Condition	General Infrastructure Condition	Open Lawn/ Turf Area	Amenities															
				Tennis Courts	Basketball Courts	Baseball Fields	Soccer Fields	Multipurpose Fields	Fitness Zones	Skate Parks	Picnic Shelters	Playgrounds	Swimming Pools	Splash Pads	Dog Parks	Gymnasiums	Community/Rec Centers	Senior Centers	Restrooms
Manhattan Beach Middle School	Good						1												1
	Fair				4										1				5
	Poor																		0
Manhattan Heights Park	Good			2		1						1				1			5
	Fair				2														2
	Poor																		0
Manhattan SB	Good																		0
	Fair											1						3	4
	Poor																		0
Manhattan Village Field	Good					1						1							2
	Fair																		0
	Poor																	1	1
Marine Avenue Park	Good					1	1					2							4
	Fair				2				1		1				1		1		6
	Poor													1					0
Marine Sports Park	Good					3													3
	Fair																	2	2
	Poor																		0

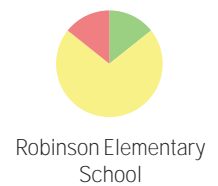
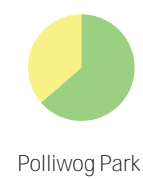
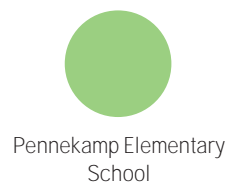
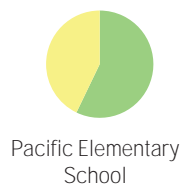
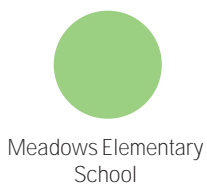
AMENITY CONDITIONS SUMMARY



AMENITY QUANTITIES AND CONDITIONS

Park Name	Condition	General Infrastructure Condition	Open Lawn/ Turf Area	Amenities															
				Tennis Courts	Basketball Courts	Baseball Fields	Soccer Fields	Multipurpose Fields	Fitness Zones	Skate Parks	Picnic Shelters	Playgrounds	Swimming Pools	Splash Pads	Dog Parks	Gymnasiums	Community/Rec Centers	Senior Centers	Restrooms
Meadows Elementary School	Good				4		1					1							6
	Fair																	0	
	Poor																	0	
Mira Costa High School	Good																	0	
	Fair			10		3		1					1					15	
	Poor															1		1	
Pacific Elementary School	Good				4													4	
	Fair						2					1						3	
	Poor																	0	
Pennekamp Elementary School	Good				4		1					1						6	
	Fair																	0	
	Poor																	0	
Polliwog Park	Good					1			1		3		1		1			7	
	Fair						1					2					1	4	
	Poor																	0	
Robinson Elementary School	Good						1											1	
	Fair				5													5	
	Poor											1						1	

AMENITY CONDITIONS SUMMARY



AMENITY QUANTITIES AND CONDITIONS

Park Name	Condition	General Infrastructure Condition	Open Lawn/ Turf Area	Amenities																
				Tennis Courts	Basketball Courts	Baseball Fields	Soccer Fields	Multipurpose Fields	Fitness Zones	Skate Parks	Picnic Shelters	Playgrounds	Swimming Pools	Splash Pads	Dog Parks	Gymnasiums	Community/Rec Centers	Senior Centers	Restrooms	Total
Sand Dune Park	Good																			0
	Fair																			0
	Poor								1		1	2							1	5
Veterans Parkway	Good																			0
	Fair								1											1
	Poor																			0
Totals:	Good			2	14	7	8	0	1	0	3	6	1	0	1	0	1	0	0	44
	Fair			10	15	3	4	1	2	0	1	7	1	0	1	1	1	0	6	53
	Poor			0	0	0	0	0	1	0	1	3	1	0	0	0	0	1	2	9

AMENITY CONDITIONS SUMMARY



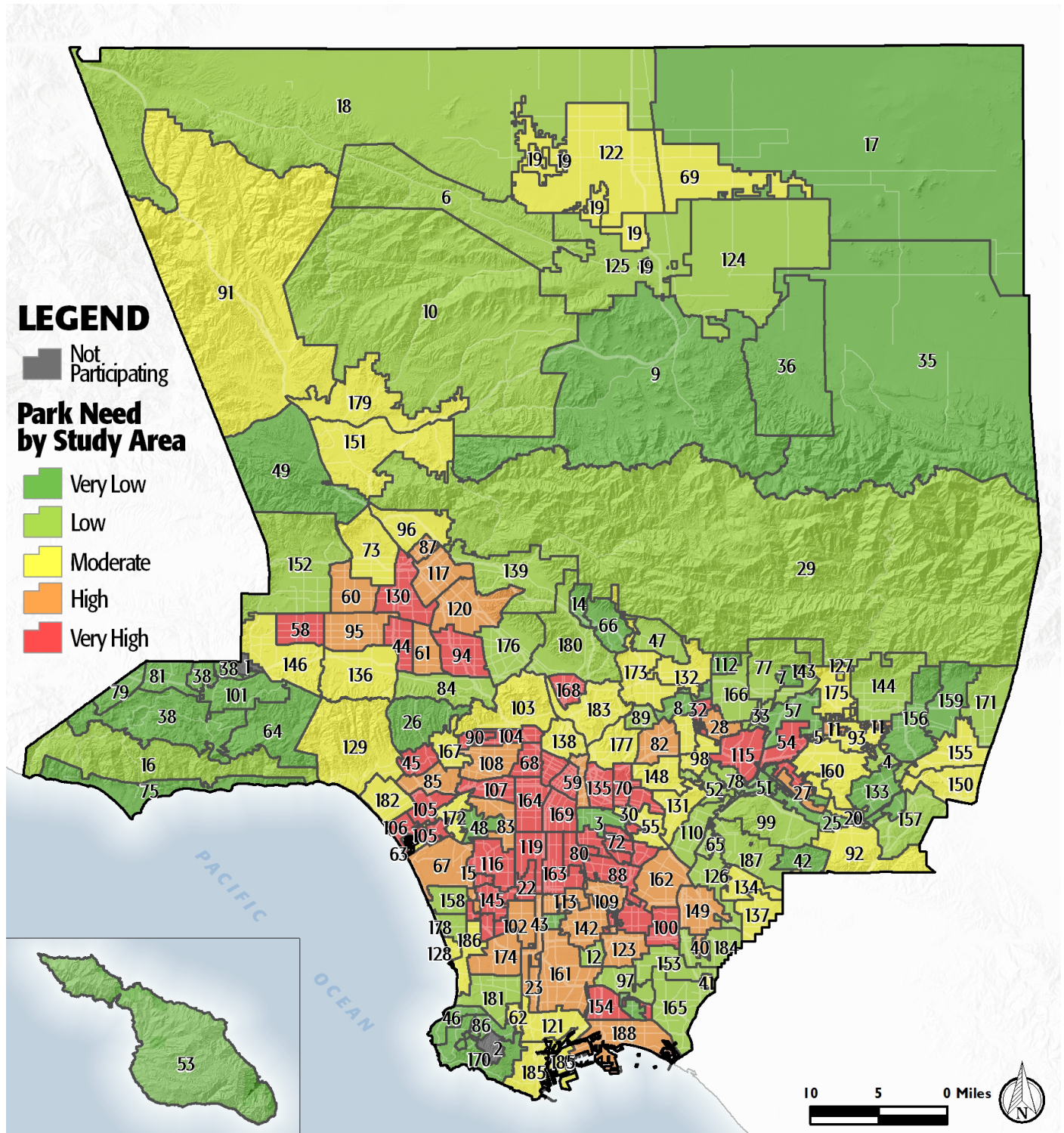
Miles of trails inside parks:2.1

Miles of trails outside of parks:0

PARK NEEDS FRAMEWORK: COUNTYWIDE ASSESSMENT OF NEED

The results of the analysis of the park metrics were used to determine an overall park need level for each Study Area. Please refer to Section 3.0 Park Needs Framework of the main report for additional information.

City of Manhattan Beach (#178) has a low park need.



PROJECT COST ESTIMATES



Study Area:

City of Manhattan Beach

Study Area ID

178

Prioritized Projects

Project Number	Project Description	Cost
No Projects		

Study Area Total Costs

TOTAL COST FOR PRIORITIZED PROJECTS		
TOTAL DEFERRED MAINTENANCE*		\$36,541,687
Replace amenities in "poor" condition		\$28,343,389
Repair amenities in "fair" condition		\$8,198,298
GRAND TOTAL		\$36,541,687

Each Study Area prioritized 10 projects. These project lists are not intended to supersede or replace any planning documents, nor to obligate the lead agency to implement these projects. For further discussion of projects, please refer to the "Potential Park Projects and Cost Estimates" section of the report.

*Does not include repairs or replacement projects listed as prioritized projects.