



City of Palos Verdes Estates

STUDY AREA PROFILE

STUDY AREA ID #46

- BASE MAP
- PARK METRICS
- WHERE ARE PARKS MOST NEEDED
- AMENITY QUANTITIES AND CONDITIONS
- PARK NEEDS FRAMEWORK
- COST ESTIMATES

Note: This Study Area did not hold a community workshop





- Los Angeles Countywide Comprehensive Park & Recreation Needs Assessment

PARK METRICS



PARK LAND: Is there enough park land for the population?

441.7 PARK ACRES
within study area

13,704
POPULATION

32.2 PARK ACRES
PER 1,000

The county average is 3.3 park acres per 1,000

*This section does not include the 5.5 acres of regional open space, nature preserves, or State and National Forest land in this Study Area.

PARK ACCESSIBILITY:
Is park land located where
everyone can access it?

45%

of population living
WITHIN 1/2 MILE
of a park

The county average is 49% of the population living
within 1/2 mile of a park

PARK PRESSURE

How much park land is available to residents in the area around each park?

Palos Verdes Estates City Parkland (410.31 Acres)

56.45 park acres per 1,000

Palos Verdes Estates Stable and City Parkland (20.8 Acres)

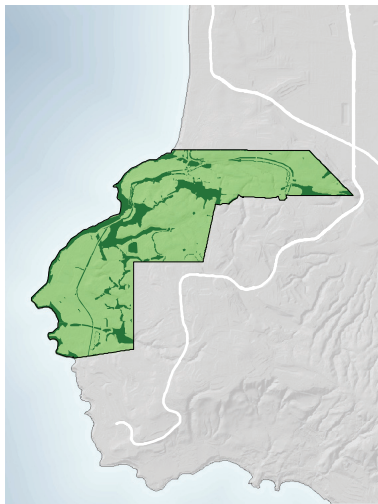
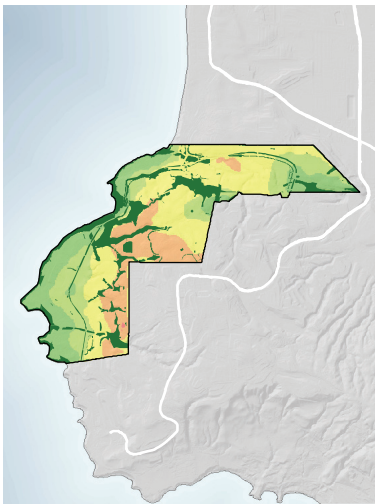
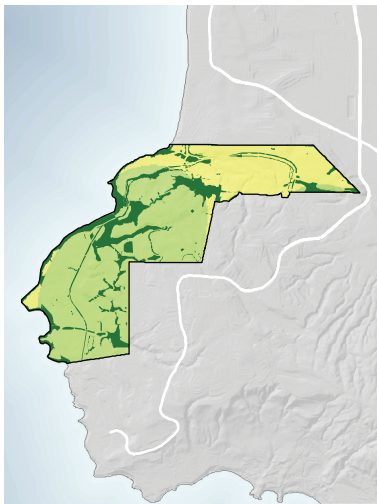
9.74 park acres per 1,000

RAT Beach / Malaga Cove (10.56 Acres)

6.59 park acres per 1,000

WHERE ARE PARKS MOST NEEDED?

PARK ACRE NEED + DISTANCE TO PARKS + POPULATION DENSITY



= PARK NEED

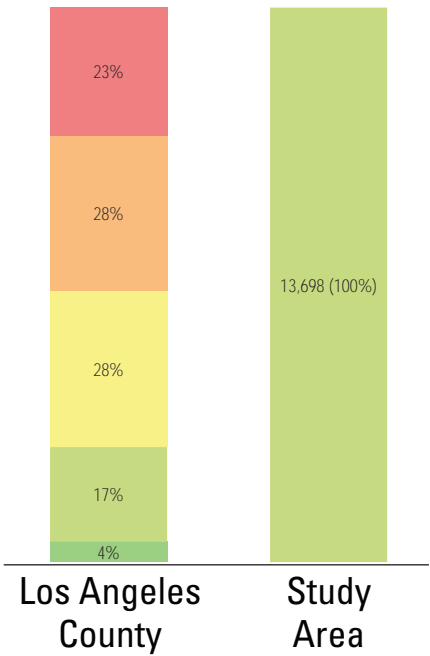
*Calculated using the following weighting: (20% x Park Acre Need) + (20% x Distance to Parks) + (60% x Population Density)



PARK NEED CATEGORY

- Very High
- High
- Moderate
- Low
- Very Low
- No Population
- Area within 1/2 mile walk of a park

HOW MANY PEOPLE NEED PARKS?



AMENITY QUANTITIES AND CONDITIONS

Park Name	Condition	General Infrastructure Condition	Open Lawn/ Turf Area	Amenities																
				Tennis Courts	Basketball Courts	Baseball Fields	Soccer Fields	Multipurpose Fields	Fitness Zones	Skate Parks	Picnic Shelters	Playgrounds	Swimming Pools	Splash Pads	Dog Parks	Gymnasiums	Community/Rec Centers	Senior Centers	Restrooms	Total
Palos Verdes Estates City Parkland	Good																			0
	Fair					1														1
	Poor																			0
Palos Verdes Estates Stable and City Parkland	Good										3									3
	Fair																			0
	Poor																			0
RAT Beach / Malaga Cove	Good																			0
	Fair																			0
	Poor																			0
Totals:	Good			0	0	0	0	0	0	0	3	0	0	0	0	0	0	0	0	3
	Fair			0	0	1	0	0	0	0	0	0	0	0	0	0	0	0	0	1
	Poor			0	0	0	0	0	0	0	0	0	0	0	0	0	0	0	0	0

AMENITY CONDITIONS SUMMARY



Palos Verdes Estates City Parkland



Palos Verdes Estates Stable and City Parkland

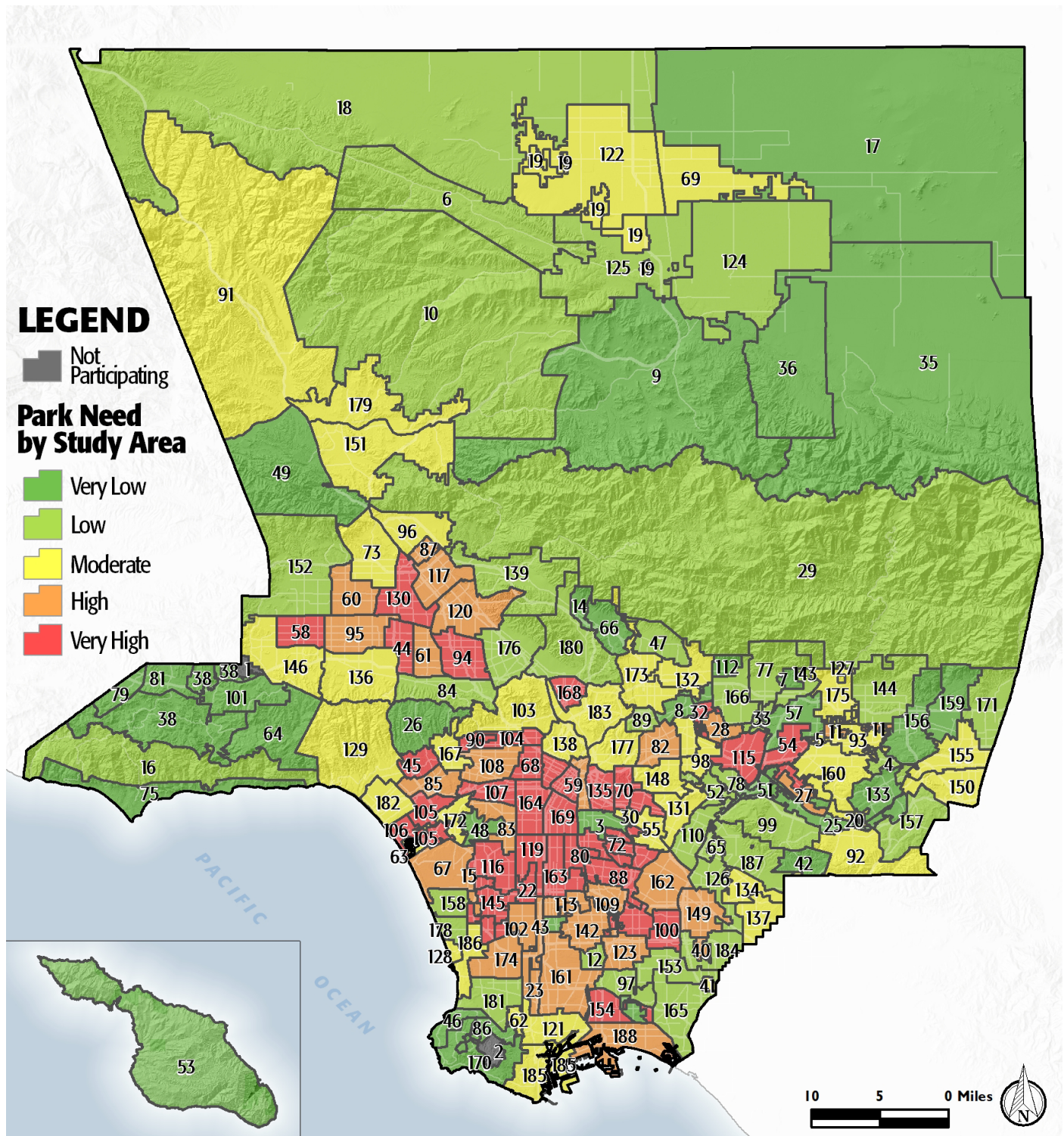
Miles of trails inside parks: 0

Miles of trails outside of parks: 0

PARK NEEDS FRAMEWORK: COUNTYWIDE ASSESSMENT OF NEED

The results of the analysis of the park metrics were used to determine an overall park need level for each Study Area. Please refer to Section 3.0 Park Needs Framework of the main report for additional information.

City of Palos Verdes Estates (#46) has a very low park need.



PROJECT COST ESTIMATES



Study Area:
City of Palos Verdes Estates

Study Area ID
46

Prioritized Projects

Project Number	Project Description	Cost
No Projects		

Study Area Total Costs

TOTAL COST FOR PRIORITIZED PROJECTS		
TOTAL DEFERRED MAINTENANCE*		\$176,992,535
Replace amenities in "poor" condition		\$169,252,463
Repair amenities in "fair" condition		\$7,740,072
GRAND TOTAL		\$176,992,535

Each Study Area prioritized 10 projects. These project lists are not intended to supersede or replace any planning documents, nor to obligate the lead agency to implement these projects. For further discussion of projects, please refer to the "Potential Park Projects and Cost Estimates" section of the report.

*Does not include repairs or replacement projects listed as prioritized projects.