



City of Long Beach South STUDY AREA PROFILE

STUDY AREA ID #188

- BASE MAP
- PARK METRICS
- WHERE ARE PARKS MOST NEEDED
- AMENITY QUANTITIES AND CONDITIONS
- PARK NEEDS FRAMEWORK
- PROJECT COST ESTIMATES
- PROJECT REPORTING FORM
- COMMUNITY ENGAGEMENT FORM





STUDY AREA BASE MAP



City of Long Beach South

- Existing Park
- Existing Park Outside Study Area
- Existing School
- Other Open Space

PARK METRICS



PARK LAND: Is there enough park land for the population?

433.1 PARK ACRES
within study area

186,954
POPULATION

2.3 PARK ACRES
PER 1,000

The county average is 3.3 park acres per 1,000

PARK ACCESSIBILITY: Is park land located where everyone can access it?

89% of population living
WITHIN 1/2 MILE
of a park

The county average is 49% of the population living
within 1/2 mile of a park

PARK PRESSURE

How much park land is available to residents in the area around each park?

14th Street Park and Playground (1.66 Acres)

0.26 park acres per 1,000

Alamitos Beach (56.47 Acres)

9.3 park acres per 1,000

Alamitos at 72nd Park (0.23 Acres)

0.44 park acres per 1,000

Bayshore Playground (4.15 Acres)

1.83 park acres per 1,000

Belmont Pool Complex (6.12 Acres)

4.8 park acres per 1,000

Belmont Shore Beach (64.13 Acres)

20.46 park acres per 1,000

Bixby Park (15.04 Acres)

2.41 park acres per 1,000

Bluff Park (18.57 Acres)

2.18 park acres per 1,000

Cesar E. Chavez Park (9.07 Acres)

1.65 park acres per 1,000

Chittick Field (19.44 Acres)

6.25 park acres per 1,000

Colorado Lagoon/Alamitos Heights Park (27.32 Acres)

7.29 park acres per 1,000

Craftsman Village Park (0.33 Acres)

0.04 park acres per 1,000

Douglas MacArthur Park (3.65 Acres)
0.3 park acres per 1,000

Downtown Marina Mole (5.17 Acres)
62.88 park acres per 1,000

Drake Park (6.15 Acres)
1.98 park acres per 1,000

Drake/Chavez Soccer Fields and Parkway (7.93 Acres)
3.02 park acres per 1,000

East Village Arts Park (0.09 Acres)
0.02 park acres per 1,000

Ernest McBride Park & Cal Community Center (2.48 Acres)
0.7 park acres per 1,000

Golden Shore Marine Biological Reserve Park (7.76 Acres)
9.25 park acres per 1,000

Harry Bridges Memorial Park (4.72 Acres)
278.98 park acres per 1,000

Jack Dunster Reserve (3.2 Acres)
9.02 park acres per 1,000

Jack Nichol Park (3.51 Acres)
1.87 park acres per 1,000

Leeway Sailing and Aquatics Center (0.59 Acres)
14.15 park acres per 1,000

Lincoln Park (2.8 Acres)
0.55 park acres per 1,000

Livingston Drive Greenbelt and Playground (1.75 Acres)
0.34 park acres per 1,000

Loma Vista Park (0.14 Acres)
0.09 park acres per 1,000

Long Beach Greenbelt (2.43 Acres)
0.29 park acres per 1,000

Marina Green (7.81 Acres)
16.51 park acres per 1,000

Marina Vista Park (17.57 Acres)
13.27 park acres per 1,000

Marine Park (Mother's Beach) (9.26 Acres)
4.42 park acres per 1,000

Marine Stadium Park (4.81 Acres)
3.71 park acres per 1,000

Maurice 'Mossy' Kent Park (0.11 Acres)
0.27 park acres per 1,000

Michael K Green Skate Park (0.43 Acres)
0.11 park acres per 1,000

Miracle on Fourth Street Park (0.14 Acres)
0.01 park acres per 1,000

Orizaba Park (3.78 Acres)
0.37 park acres per 1,000

Peace Park (0.4 Acres)
0.08 park acres per 1,000

Plaza Zaferia (0.81 Acres)

0.13 park acres per 1,000

Promenade Square (0.52 Acres)

1.27 park acres per 1,000

Rainbow Harbor Esplanade (6.9 Acres)

37.31 park acres per 1,000

Rainbow Lagoon Park (11.74 Acres)

14.65 park acres per 1,000

Recreation Park (66.12 Acres)

14.28 park acres per 1,000

Robert Gumbiner Park (0.1 Acres)

0.01 park acres per 1,000

Rosa Parks Park (0.35 Acres)

0.25 park acres per 1,000

Rose Park (1.57 Acres)

0.04 park acres per 1,000

Rotary Centennial Park (1.21 Acres)

0.22 park acres per 1,000

Seaside Park (2.3 Acres)

0.52 park acres per 1,000

Shoreline Aquatic Park (10.67 Acres)

170.2 park acres per 1,000

The Colonnade (0.21 Acres)

0.12 park acres per 1,000

Will Rogers Mini Park (1.64 Acres)

2.45 park acres per 1,000

WHERE ARE PARKS MOST NEEDED?

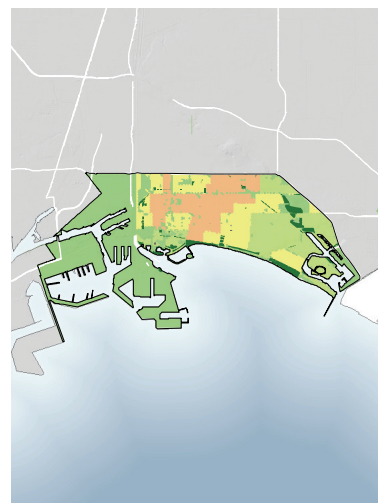
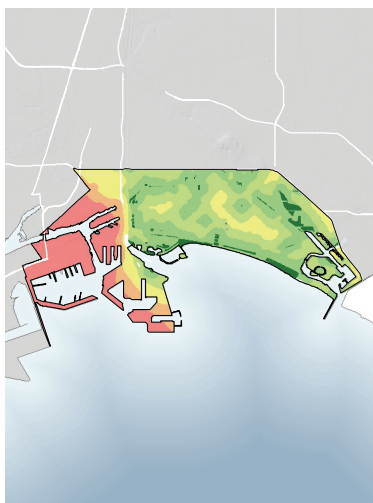
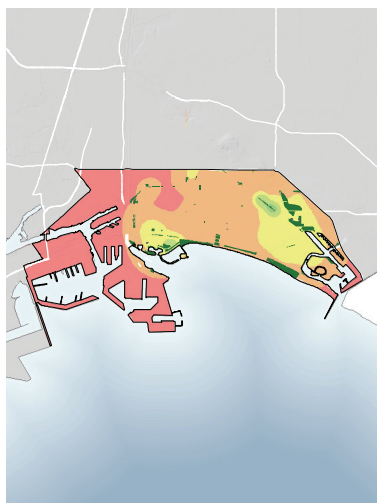
PARK ACRE NEED

+

DISTANCE TO PARKS

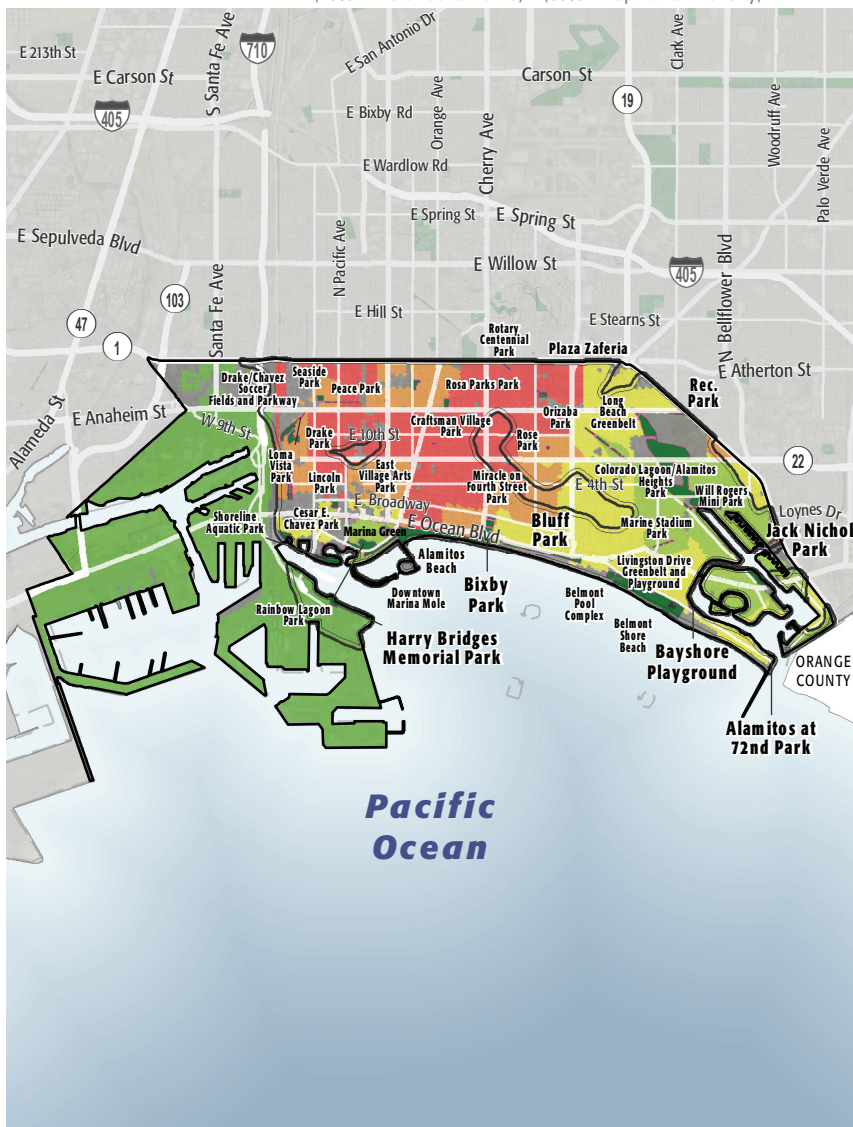
+

POPULATION DENSITY










= PARK NEED

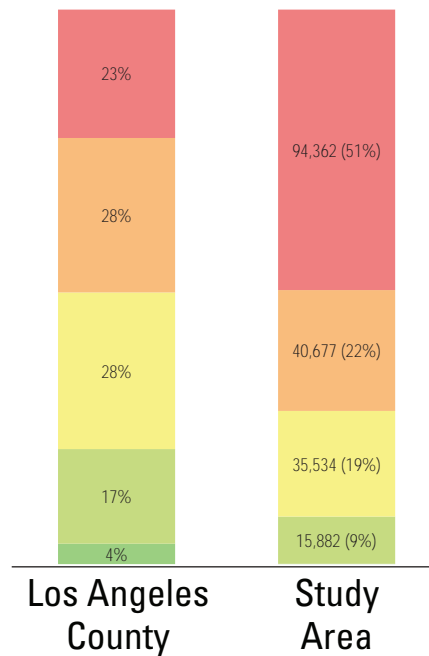
*Calculated using the following weighting: (20% x Park Acre Need) + (20% x Distance to Parks) + (60% x Population Density)



PARK NEED CATEGORY

-  Very High
 High
 Moderate
 Low
 Very Low
 No Population
 Area within 1/2 mile walk of a park

HOW MANY PEOPLE NEED PARKS?



AMENITY QUANTITIES AND CONDITIONS

Park Name	Condition	General Infrastructure Condition	Open Lawn/ Turf Area	Amenities																
				Tennis Courts	Basketball Courts	Baseball Fields	Soccer Fields	Multipurpose Fields	Fitness Zones	Skate Parks	Picnic Shelters	Playgrounds	Swimming Pools	Splash Pads	Dog Parks	Gymnasiums	Community/Rec Centers	Senior Centers	Restrooms	Total
14th Street Park and Playground	Good								1										1	
	Fair			4															4	
	Poor										1								1	
Alamitos Beach	Good																		0	
	Fair																1	1		
	Poor																	0		
Alamitos at 72nd Park	Good																		0	
	Fair																	0		
	Poor																	0		
Bayshore Playground	Good																		0	
	Fair										1						2	3		
	Poor																	0		
Belmont Pool Complex	Good											1					1	2		
	Fair											1						1		
	Poor																	0		
Belmont Shore Beach	Good																	0		
	Fair											1						1		
	Poor																	0		

AMENITY CONDITIONS SUMMARY



14th Street Park and Playground



Alamitos Beach



Bayshore Playground



Belmont Pool Complex



Belmont Shore Beach

AMENITY QUANTITIES AND CONDITIONS

Park Name	Condition	General Infrastructure Condition	Open Lawn/ Turf Area	Amenities																
				Tennis Courts	Basketball Courts	Baseball Fields	Soccer Fields	Multipurpose Fields	Fitness Zones	Skate Parks	Picnic Shelters	Playgrounds	Swimming Pools	Splash Pads	Dog Parks	Gymnasiums	Community/Rec Centers	Senior Centers	Restrooms	Total
Bixby Park	Good								1			1								2
	Fair									1							1			2
	Poor																		1	1
Bluff Park	Good																			0
	Fair																			0
	Poor																			0
Cesar E. Chavez Park	Good															1				1
	Fair				2							2					1		1	6
	Poor																			0
Chittick Field	Good																		1	1
	Fair						3													3
	Poor																			0
Colorado Lagoon/Alamitos Heights Park	Good											1								1
	Fair																		1	1
	Poor																			0
Craftsman Village Park	Good											1								1
	Fair																			0
	Poor																			0

AMENITY CONDITIONS SUMMARY



Bixby Park



Cesar E. Chavez Park



Chittick Field



Colorado Lagoon/Alamitos



Craftsman Village Park

AMENITY QUANTITIES AND CONDITIONS

Park Name	Condition	General Infrastructure Condition	Open Lawn/ Turf Area	Amenities																
				Tennis Courts	Basketball Courts	Baseball Fields	Soccer Fields	Multipurpose Fields	Fitness Zones	Skate Parks	Picnic Shelters	Playgrounds	Swimming Pools	Splash Pads	Dog Parks	Gymnasiums	Community/Rec Centers	Senior Centers	Restrooms	Total
Douglas MacArthur Park	Good																		0	
	Fair				1												1		2	
	Poor										1		1					1	3	
Downtown Marina Mole	Good																		0	
	Fair																	2	2	
	Poor																		0	
Drake Park	Good																		0	
	Fair			2	1						2								5	
	Poor						1			1		1		1			1		6	
Drake/Chavez Soccer Fields and Parkway	Good																		0	
	Fair																		0	
	Poor																		0	
East Village Arts Park	Good																		0	
	Fair																		0	
	Poor																		0	
Ernest McBride Park & Cal Community Center	Good										1					1		1	3	
	Fair				1					1					1	1			4	
	Poor																		0	

AMENITY CONDITIONS SUMMARY



AMENITY QUANTITIES AND CONDITIONS

Park Name	Condition	General Infrastructure Condition	Open Lawn/ Turf Area	Amenities																
				Tennis Courts	Basketball Courts	Baseball Fields	Soccer Fields	Multipurpose Fields	Fitness Zones	Skate Parks	Picnic Shelters	Playgrounds	Swimming Pools	Splash Pads	Dog Parks	Gymnasiums	Community/Rec Centers	Senior Centers	Restrooms	Total
Golden Shore Marine Biological Reserve Park	Good																		0	
	Fair																		0	
	Poor																		0	
Harry Bridges Memorial Park	Good																		0	
	Fair																1		1	
	Poor																		0	
Jack Dunster Marine Reserve	Good																		0	
	Fair																		0	
	Poor																		0	
Jack Nichol Park	Good																		0	
	Fair																		0	
	Poor																		0	
Leeway Sailing and Aquatics Center	Good																		0	
	Fair																		0	
	Poor																		0	
Lincoln Park	Good																		0	
	Fair																		0	
	Poor													1					1	

AMENITY CONDITIONS SUMMARY



Harry Bridges Memorial Park



Lincoln Park

AMENITY QUANTITIES AND CONDITIONS

Park Name	Condition	General Infrastructure Condition	Open Lawn/ Turf Area	Amenities																
				Tennis Courts	Basketball Courts	Baseball Fields	Soccer Fields	Multipurpose Fields	Fitness Zones	Skate Parks	Picnic Shelters	Playgrounds	Swimming Pools	Splash Pads	Dog Parks	Gymnasiums	Community/Rec Centers	Senior Centers	Restrooms	Total
Livingston Drive Greenbelt and Playground	Good																		0	
	Fair																		0	
	Poor											1							1	
Loma Vista Park	Good											1							1	
	Fair																		0	
	Poor																		0	
Long Beach Greenbelt	Good																		0	
	Fair																		0	
	Poor																		0	
Marina Green	Good																		0	
	Fair																2		2	
	Poor																		0	
Marina Vista Park	Good			2								1							3	
	Fair						1	1										1	3	
	Poor																		0	
Marine Park (Mother's Beach)	Good																	1	1	
	Fair											1						1	2	
	Poor																		0	

AMENITY CONDITIONS SUMMARY



Livingston Drive Greenbelt and Playground



Loma Vista Park



Marina Green



Marina Vista Park



Marine Park (Mother's Beach)

AMENITY QUANTITIES AND CONDITIONS

Park Name	Condition	General Infrastructure Condition	Open Lawn/ Turf Area	Amenities																
				Tennis Courts	Basketball Courts	Baseball Fields	Soccer Fields	Multipurpose Fields	Fitness Zones	Skate Parks	Picnic Shelters	Playgrounds	Swimming Pools	Splash Pads	Dog Parks	Gymnasiums	Community/Rec Centers	Senior Centers	Restrooms	Total
Marine Stadium Park	Good																		0	
	Fair																	3	3	
	Poor																	2	2	
Maurice 'Mossy' Kent Park	Good																		0	
	Fair																		0	
	Poor																		0	
Michael K Green Skate Park	Good																		0	
	Fair																		0	
	Poor									1									1	
Miracle on Fourth Street Park	Good											1							1	
	Fair																		0	
	Poor																		0	
Orizaba Park	Good				1				1	1		1					1		5	
	Fair										2								2	
	Poor																		0	
Peace Park	Good																		0	
	Fair											1							1	
	Poor																		0	

AMENITY CONDITIONS SUMMARY



AMENITY QUANTITIES AND CONDITIONS

Park Name	Condition	General Infrastructure Condition	Open Lawn/ Turf Area	Amenities																
				Tennis Courts	Basketball Courts	Baseball Fields	Soccer Fields	Multipurpose Fields	Fitness Zones	Skate Parks	Picnic Shelters	Playgrounds	Swimming Pools	Splash Pads	Dog Parks	Gymnasiums	Community/Rec Centers	Senior Centers	Restrooms	Total
Plaza Zaferia	Good																			0
	Fair																			0
	Poor																			0
Promenade Square	Good																			0
	Fair																			0
	Poor																			0
Rainbow Harbor Esplanade	Good																			0
	Fair																	3		3
	Poor																			0
Rainbow Lagoon Park	Good																			0
	Fair																			0
	Poor																			0
Recreation Park	Good																		1	1
	Fair			8		1						1			1		1			12
	Poor														1			2		2
Robert Gumbiner Park	Good																			0
	Fair																			0
	Poor																			0

AMENITY CONDITIONS SUMMARY



Rainbow Harbor Esplanade



Recreation Park

AMENITY QUANTITIES AND CONDITIONS

Park Name	Condition	General Infrastructure Condition	Open Lawn/ Turf Area	Amenities																	
				Tennis Courts	Basketball Courts	Baseball Fields	Soccer Fields	Multipurpose Fields	Fitness Zones	Skate Parks	Picnic Shelters	Playgrounds	Swimming Pools	Splash Pads	Dog Parks	Gymnasiums	Community/Rec Centers	Senior Centers	Restrooms	Total	
Rosa Parks Park	Good																			0	
	Fair																			0	
	Poor																			0	
Rose Park	Good																			0	
	Fair																			0	
	Poor																			0	
Rotary Centennial Park	Good																			0	
	Fair										1	1								2	
	Poor																			0	
Seaside Park	Good																	1		1	
	Fair											1								1	
	Poor						1				1									2	
Shoreline Aquatic Park	Good																			0	
	Fair																			0	
	Poor																			0	
The Colonnade	Good																			0	
	Fair																			0	
	Poor																			0	

AMENITY CONDITIONS SUMMARY



Rotary Centennial Park



Seaside Park

AMENITY QUANTITIES AND CONDITIONS

Park Name	Condition	General Infrastructure Condition	Open Lawn/ Turf Area	Amenities																
				Tennis Courts	Basketball Courts	Baseball Fields	Soccer Fields	Multipurpose Fields	Fitness Zones	Skate Parks	Picnic Shelters	Playgrounds	Swimming Pools	Splash Pads	Dog Parks	Gymnasiums	Community/Rec Centers	Senior Centers	Restrooms	Total
Will Rogers Mini Park	Good																		0	
	Fair																		0	
	Poor																		0	
Totals:	Good			2	1	0	0	0	3	1	0	8	1	0	0	1	2	0	6	25
	Fair			10	9	1	4	1	0	2	5	8	2	0	1	1	5	0	18	67
	Poor			0	0	0	2	0	0	2	1	4	0	2	1	0	1	0	7	20

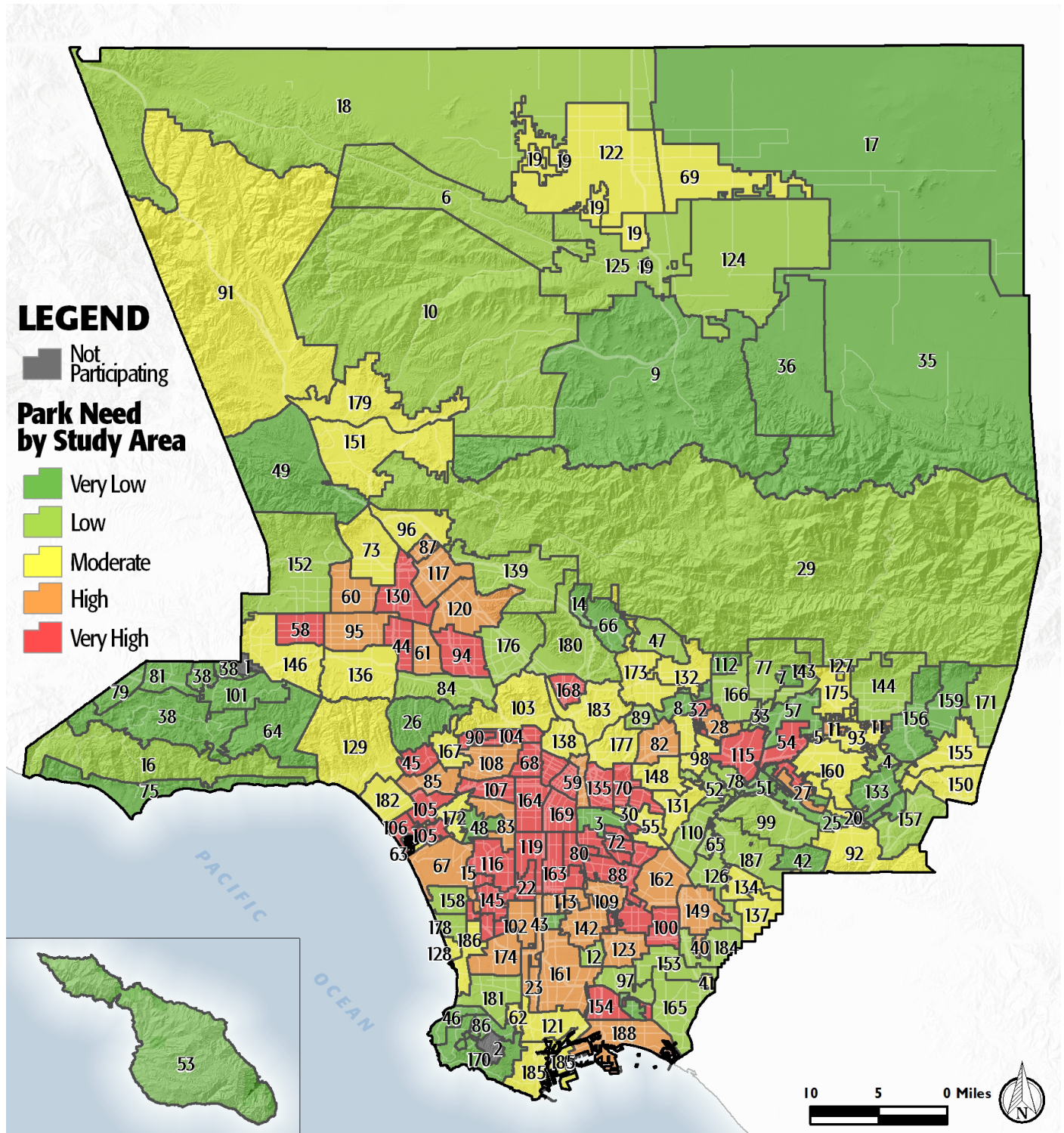
Miles of trails inside parks: 3.5

Miles of trails outside of parks: 0.8

PARK NEEDS FRAMEWORK: COUNTYWIDE ASSESSMENT OF NEED

The results of the analysis of the park metrics were used to determine an overall park need level for each Study Area. Please refer to Section 3.0 Park Needs Framework of the main report for additional information.

City of Long Beach South (#188) has a high park need.



PROJECT COST ESTIMATES

Study Area:

City of Long Beach South

Study Area ID

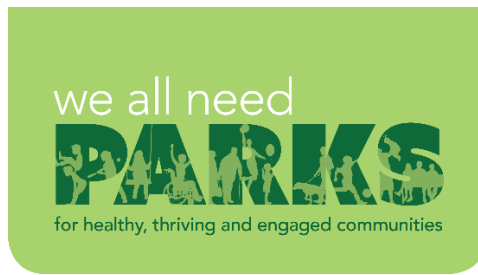
188

Prioritized Projects

Project Number	Project Description	Cost
1	Replace Pools/Aquatic Facilities at Belmont Pool	\$8,290,000
2	Repair Infrastructure/General at Chavez Park	\$934,500
3	Add Computerized Irrigation at Chavez Park	\$16,667
4	Build New Park in the General Vicinity of Drake/Chavez Greenbelt	\$6,429,407
	New Park Tasks:	
	Land Acquisition	\$2,989,537
	Infrastructure/General	\$2,280,000
	Generic Amenity	\$579,935
	Generic Amenity	\$579,935
6	Repair Community/Recreation Center at Drake Park	\$630,000
7	Replace Lighting- LED Conversion at All Parks in Study Area	\$4,716,459
8	Add Playgrounds at Promenade Park	\$500,000
9	Repair Restrooms at All Parks in Study Area	\$868,000
10	Replace Community/Recreation Center at 1150 E. 4th Street	\$6,300,000
Study Area Total Costs		
	TOTAL COST FOR PRIORITIZED PROJECTS	\$28,685,033
	TOTAL DEFERRED MAINTENANCE*	\$37,917,751
	Replace amenities in "poor" condition	\$22,440,136
	Repair amenities in "fair" condition	\$15,477,615
	GRAND TOTAL	\$66,602,784

Each Study Area prioritized 10 projects. These project lists are not intended to supersede or replace any planning documents, nor to obligate the lead agency to implement these projects. For further discussion of projects, please refer to the "Potential Park Projects and Cost Estimates" section of the report.

*Does not include repairs or replacement projects listed as prioritized projects.



Study Area Name:

Long Beach South

Prioritized Project Reporting Form

Please provide descriptions of the park projects prioritized during your Study Area's community engagement workshop. The details you provide will contribute to cost estimates that will be included with your projects in the final report of the LA Countywide Park Needs Assessment. Please be as specific as possible by providing all details that may have an impact on cost estimates (including quantities and acres where appropriate). Along with this form, please attach copies or scans of all voting forms presented at your engagement workshop.

Please return this form to robinson@parks.lacounty.gov no later than February 29, 2016

1. Project Name: Belmont Pool

Project Location (address, assessor's parcel number, or nearest intersection):

4000 Olympic Plaza Drive, Long Beach

Project Type (choose one):

- ☐ Repairs to Existing Amenities
- ☒ Add/Replace Amenities in Existing
- ☐ Park Build New Park or Specialty Facility (include acreage in description)

Brief Description of Project:

New aquatic complex to replace demolished Belmont Pool.



LOS ANGELES COUNTYWIDE COMPREHENSIVE
PARK & RECREATION NEEDS ASSESSMENT

2. Project Name: Chavez Park Infrastructure

Project Location (address, assessor's parcel number, or nearest intersection):

401 Golden Ave., Long Beach

Project Type (choose one):

- ☒ Repairs to Existing Amenities
- ☐ Add/Replace Amenities in Existing Park
- ☐ Build New Park or Specialty Facility (include acreage in description)

Brief Description of Project:

Repair the infrastructure at Chavez Park including irrigation, lighting, and walkways

3. Project Name: Drake/Chavez Greenbelt

Project Location (address, assessor's parcel number, or nearest intersection):

Golden Ave. between 6th Street and 7th Street, Long Beach

Project Type (choose one):

- ☐ Repairs to Existing Amenities
- ☐ Add/Replace Amenities in Existing Park
- ☒ Build New Park or Specialty Facility (include acreage in description)

Brief Description of Project:

Acquire the remaining land and develop the greenbelt between Drake Park and Chavez Park (approximately 2 acres)



4. Project Name: Drake Park Community Center Rehabilitation

Project Location (address, assessor's parcel number, or nearest intersection):

951 Maine Ave., Long Beach

Project Type (choose one):

- ☒ Repairs to Existing Amenities
- ☐ Add/Replace Amenities in Existing Park
- ☐ Build New Park or Specialty Facility (include acreage in description)

Brief Description of Project:

Rehabilitate the Community Center at Drake Park (5,682 sf).

5. Project Name: Park Lighting Upgrades

Project Location (address, assessor's parcel number, or nearest intersection):

All parks within Study Area

Project Type (choose one):

- ☐ Repairs to Existing Amenities
- ☒ Add/Replace Amenities in Existing Park
- ☐ Build New Park or Specialty Facility (include acreage in description)

Brief Description of Project:

Upgrade lighting at all parks throughout the Study Area for increased visibility and reduced electricity use.



6. Project Name: Promenade Park

Project Location (address, assessor's parcel number, or nearest intersection):

215 E. 1st Street, Long Beach

Project Type (choose one):

- ☐ Repairs to Existing Amenities
- ☒ Add/Replace Amenities in Existing Park
- ☐ Build New Park or Specialty Facility (include acreage in description)

Brief Description of Project:

New playground in Promenade Park

7. Project Name: Park Restroom Repairs

Project Location (address, assessor's parcel number, or nearest intersection):

All parks within Study Area

Project Type (choose one):

- ☒ Repairs to Existing Amenities
- ☐ Add/Replace Amenities in Existing Park
- ☐ Build New Park or Specialty Facility (include acreage in description)

Brief Description of Project:

Repair existing park restrooms throughout the Study Area



8. Project Name: Senior Center Enhancements

Project Location (address, assessor's parcel number, or nearest intersection):

1150 E. 4th Street, Long Beach

Project Type (choose one):

- ☐ Repairs to Existing Amenities
- ☒ Add/Replace Amenities in Existing Park
- ☐ Build New Park or Specialty Facility (include acreage in description)

Brief Description of Project:

Remodel the Long Beach Senior Center into a state-of-the-art facility utilizing universal design and technological solutions to issues of access and communications and providing recreational, educational, and social services resources (61,000 sf)

9. Project Name:

Project Location (address, assessor's parcel number, or nearest intersection):

Project Type (choose one):

- ☐ Repairs to Existing Amenities
- ☐ Add/Replace Amenities in Existing Park
- ☐ Build New Park or Specialty Facility (include acreage in description)

Brief Description of Project:



10. Project Name:

Project Location (address, assessor's parcel number, or nearest intersection):

Project Type (choose one):

- ☐ Repairs to Existing Amenities
- ☐ Add/Replace Amenities in Existing Park
- ☐ Build New Park or Specialty Facility (include acreage in description)

Brief Description of Project:

If the projects reported on this form were subject to any type review process, please give a brief description of that process:

**Please return this form to rrobinson@parks.lacounty.gov
no later than **February 29, 2016****





Community Engagement Plan

A Community Engagement Meeting must be held in each Study Area between December 1, 2015 and February 15, 2016. The meeting can be run by city staff or by a community-based organization of your choice. The meeting facilitator must attend one of three trainings. At the training, facilitators will receive all information needed to hold the meeting. To offset the cost of the Community Engagement Meeting, a \$2,500 stipend is available for each Study Area.

Please answer the questions below and return this form to Rita Robinson
robinson@parks.lacounty.gov by **October 15, 2015**

Please tell us about your community engagement meeting:

Date: 12/09/2015

Time: 6:30 PM

Location: Orizaba Park Community Center

- ☒ Parking provided
☒ Accessible by public transportation

What translation services (if any) will be provided? Languages: Spanish, Khmer

Who will be facilitating your community engagement event(s)?

- ☐ City Staff
☒ Community-Based Organization. Name of CBO: DakeLuna Consultants

Please provide the contact information for the primary facilitator **and** any secondary facilitator (if applicable) that will be attending the mandatory training. You may have a **maximum** of 2 people.

Name: Miguel Luna

Title: Principal

Address: 535 Euclid Ave., Los Angeles CA 90063

Phone:

Email: miguel@dakeluna.com

Name: Sharon Gates

Title: Administrative Analyst

Address: 2760 N Studebaker Rd, Lona Beach CA 90815

Phone: 562-570-3124

Email: sharon.gates@longbeach.gov

Please rank your preference for a mandatory facilitator training date. Space is limited at each training and spaces will be reserved based on the timely return of this form.

- | | | | |
|---|-----------------------------|-----------------|--------------------------------|
| 2 | Monday--November 16, 2015 | 10:00am-12:00pm | Roy Anderson Recreation Center |
| 1 | Tuesday--November 17, 2015 | 6:30pm-8:30pm | Los Angeles County Arboretum |
| 3 | Saturday--November 21, 2015 | 10:00am-12:00pm | San Fernando Park |

Please describe how you will promote your engagement meeting (select all that apply):

- | | |
|--|---|
| <input checked="" type="checkbox"/> Publicly posted notice | <input type="checkbox"/> Canvassing |
| <input type="checkbox"/> Mailers | <input type="checkbox"/> Television/Radio |
| <input checked="" type="checkbox"/> Website | <input type="checkbox"/> Other |
| <input checked="" type="checkbox"/> Social Media | |

Please describe your attendance goal (# of attendees): 50

Please provide any additional details related to your action plan for engaging the community:

The list of prioritized parks projects generated at the community engagement meeting is due to the County by **February 29, 2016**.