



# Santa Clarita - North

## STUDY AREA PROFILE

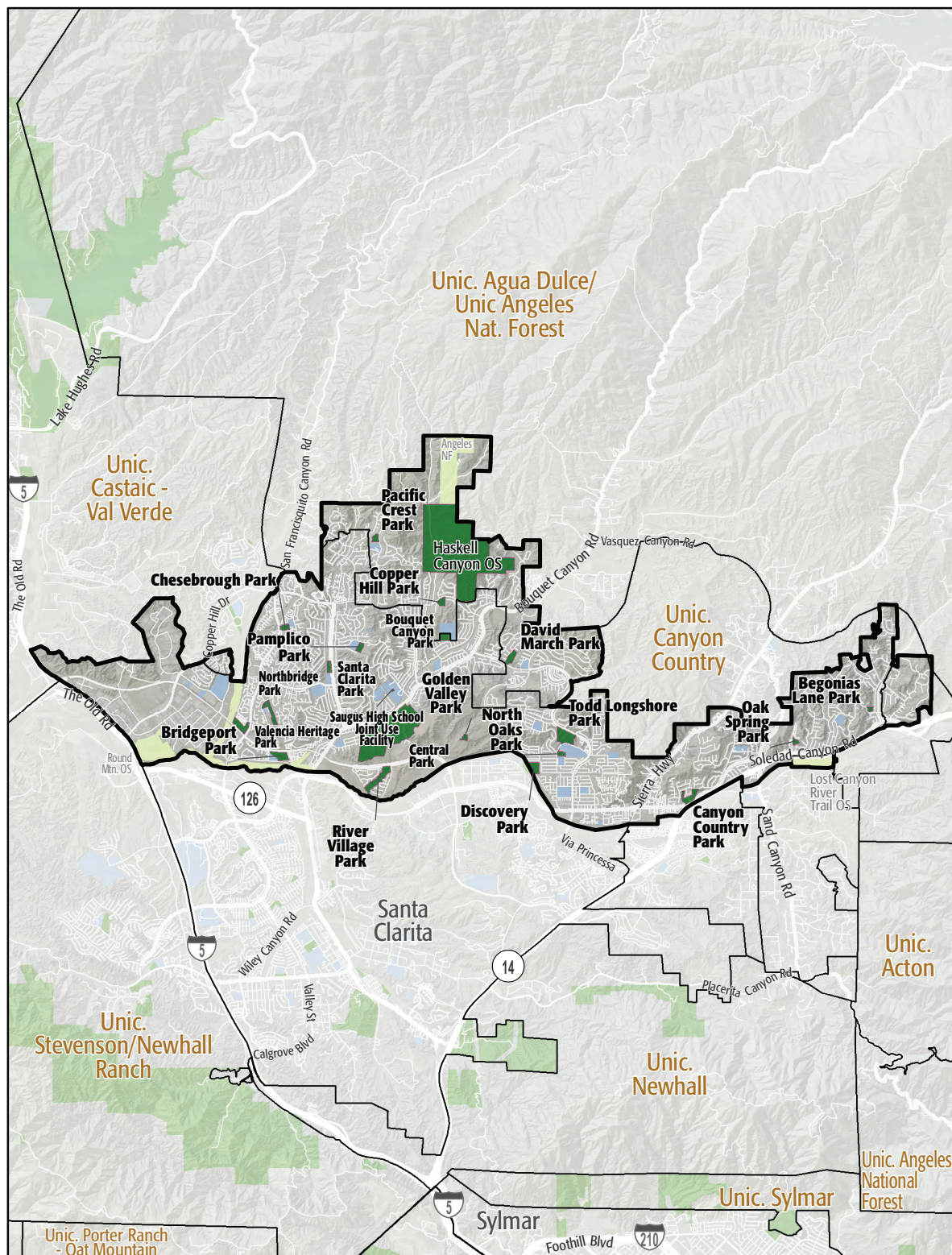
STUDY AREA ID #179

- BASE MAP
- PARK METRICS
- WHERE ARE PARKS MOST NEEDED
- AMENITY QUANTITIES AND CONDITIONS
- PARK NEEDS FRAMEWORK
- PROJECT COST ESTIMATES
- PROJECT REPORTING FORM





# STUDY AREA BASE MAP



## Santa Clarita - North

- Existing Park
- Existing Park Outside Study Area
- Existing School
- Other Open Space

## 6. PARK METRICS



### PARK LAND: Is there enough park land for the population?

**235.3** PARK ACRES  
within study area

**128,396**  
POPULATION

**1.8** PARK ACRES  
PER 1,000

**255.8** REGIONAL PARK ACRES  
within study area

**2** REGIONAL PARK ACRES  
PER 1,000

The county average is 3.3 park acres per 1,000

\*This section does not include the 57 acres of regional open space, nature preserves, or State and National Forest land in this Study Area.

**PARK ACCESSIBILITY:**  
Is park land located where  
everyone can access it?

**23%** of population living  
WITHIN 1/2 MILE  
of a park

The county average is 49% of the population living  
within 1/2 mile of a park

## PARK PRESSURE

How much park land is available to residents in the area around each park?

**Begonias Lane Park (4.2 Acres)**  
0.47 park acres per 1,000

**Bouquet Canyon Park (10.58 Acres)**  
1.86 park acres per 1,000

**Bridgeport Park (16.75 Acres)**  
4.93 park acres per 1,000

**Canyon Country Park (17.76 Acres)**  
0.86 park acres per 1,000

**Central Park (255.82 Acres)**  
91.97 park acres per 1,000

**Chesebrough Park (7.13 Acres)**  
0.85 park acres per 1,000

**Copper Hill Park (7.98 Acres)**  
3.21 park acres per 1,000

**David March Park (12.26 Acres)**  
2.32 park acres per 1,000

**Discovery Park (24.31 Acres)**  
2.13 park acres per 1,000

**Golden Valley Park (4.97 Acres)**  
1.74 park acres per 1,000

**North Oaks Park (6.1 Acres)**  
0.81 park acres per 1,000

**Northbridge Park (17.48 Acres)**  
2.27 park acres per 1,000

**Oak Spring Park (4.9 Acres)**  
0.58 park acres per 1,000

**Pacific Crest Park (6.89 Acres)**  
0.78 park acres per 1,000

**Pamplico Park (7.58 Acres)**  
0.83 park acres per 1,000

**River Village Park (29 Acres)**  
12.09 park acres per 1,000

**Santa Clarita Park (7.16 Acres)**  
1.36 park acres per 1,000

**Saugus High School JUA (0.88 Acres)**  
0.26 park acres per 1,000

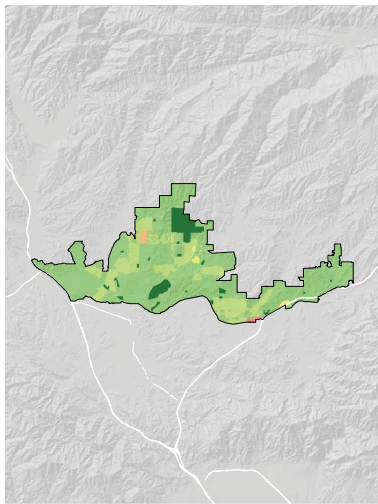
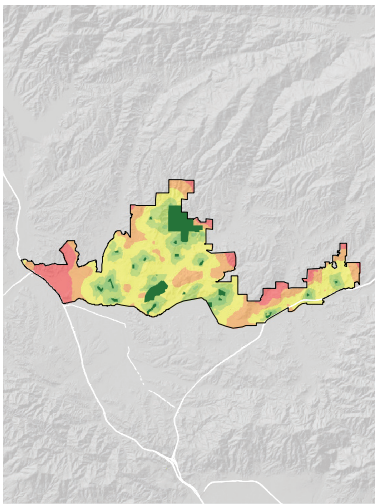
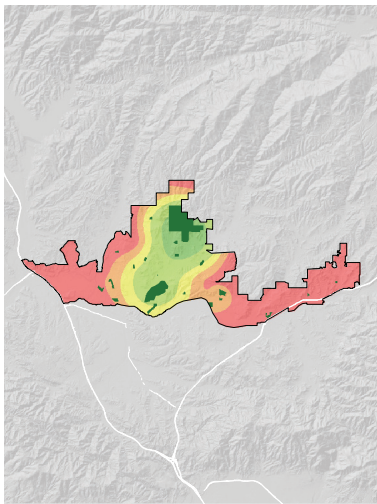
**Todd Longshore Park (31.79 Acres)**  
5.11 park acres per 1,000

**Valencia Heritage Park (17.57 Acres)**  
2.09 park acres per 1,000



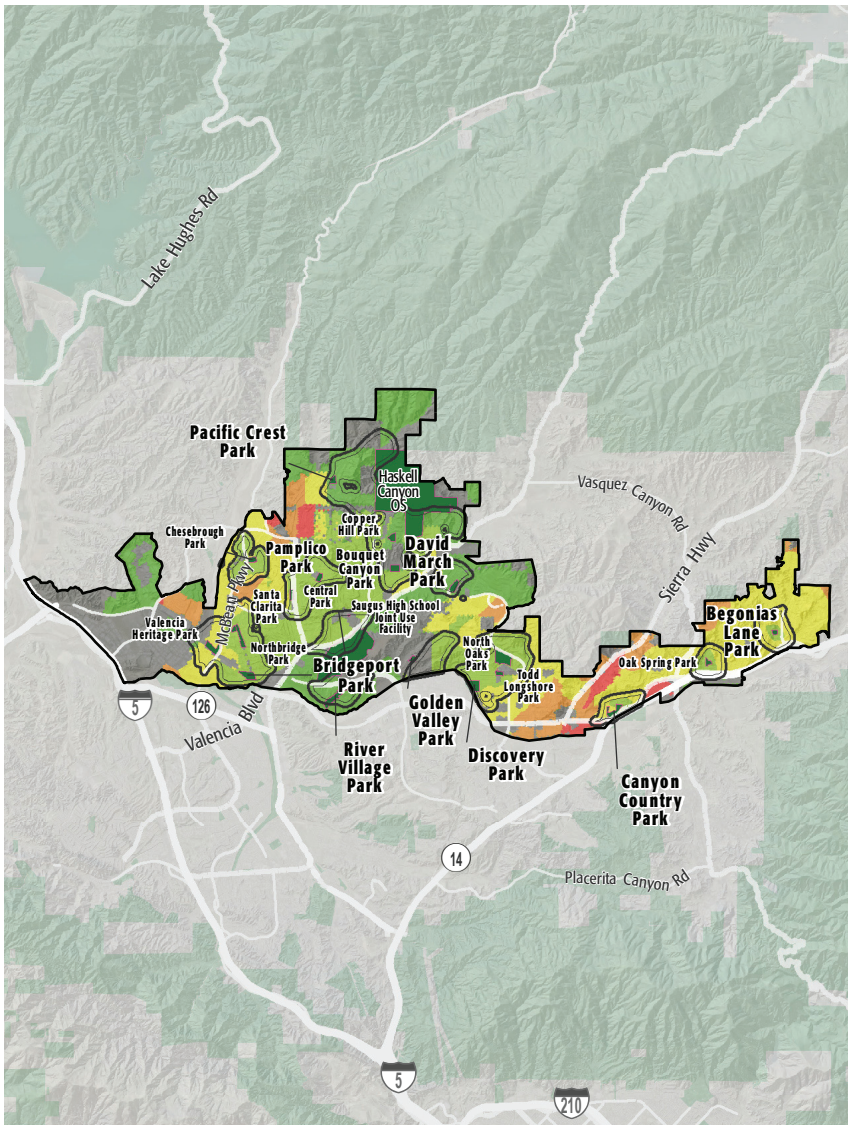
# WHERE ARE PARKS MOST NEEDED?

PARK ACRE NEED + DISTANCE TO PARKS + POPULATION DENSITY



= PARK NEED

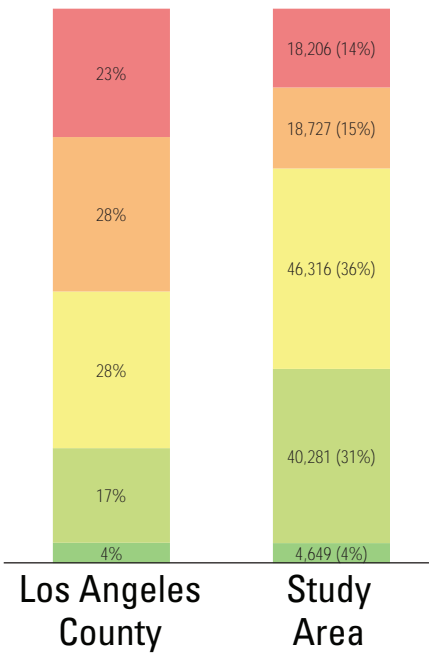
\*Calculated using the following weighting: (20% x Park Acre Need) + (20% x Distance to Parks) + (60% x Population Density)



## PARK NEED CATEGORY

- Very High
- High
- Moderate
- Low
- Very Low
- No Population
- Area within 1/2 mile walk of a park

## HOW MANY PEOPLE NEED PARKS?



## AMENITY QUANTITIES AND CONDITIONS

Park Name	Condition	General Infrastructure Condition	Open Lawn/ Turf Area	Amenities																
				Tennis Courts	Basketball Courts	Baseball Fields	Soccer Fields	Multipurpose Fields	Fitness Zones	Skate Parks	Picnic Shelters	Playgrounds	Swimming Pools	Splash Pads	Dog Parks	Gymnasiums	Community/Rec Centers	Senior Centers	Restrooms	Total
Begonias Lane Park	Good																		0	
	Fair				1						1	1						1	4	
	Poor																		0	
Bouquet Canyon Park	Good																		0	
	Fair			2	1	1						1						1	6	
	Poor																		0	
Bridgeport Park	Good																		0	
	Fair					1	1	1				1						1	5	
	Poor																		0	
Canyon Country Park	Good																		0	
	Fair					1		1	1		2	1				1		1	8	
	Poor											1							1	
Central Park	Good																		0	
	Fair				6	4	10	10	1			1			1			3	36	
	Poor														1				0	
Chesebrough Park	Good																		0	
	Fair					1					1	1						1	4	
	Poor																		0	

## AMENITY CONDITIONS SUMMARY



Begonias Lane Park



Bouquet Canyon Park



Bridgeport Park



Canyon Country Park



Central Park



Chesebrough Park

## AMENITY QUANTITIES AND CONDITIONS

Park Name	Condition	General Infrastructure Condition	Open Lawn/ Turf Area	Amenities															
				Tennis Courts	Basketball Courts	Baseball Fields	Soccer Fields	Multipurpose Fields	Fitness Zones	Skate Parks	Picnic Shelters	Playgrounds	Swimming Pools	Splash Pads	Dog Parks	Gymnasiums	Community/Rec Centers	Senior Centers	Restrooms
Copper Hill Park	Good																		0
	Fair							1											1
	Poor																		0
David March Park	Good																		0
	Fair								1		1	1						1	4
	Poor																		0
Discovery Park	Good																		0
	Fair										1	1							2
	Poor																		0
Golden Valley Park	Good							1			2	1			1			1	6
	Fair																		0
	Poor																		0
North Oaks Park	Good																		0
	Fair											1	1				1		4
	Poor																		0
Northbridge Park	Good																		0
	Fair										1	1							2
	Poor																		0

### AMENITY CONDITIONS SUMMARY



Copper Hill Park



David March Park



Discovery Park



Golden Valley Park



North Oaks Park



Northbridge Park

## AMENITY QUANTITIES AND CONDITIONS

Park Name	Condition	General Infrastructure Condition	Open Lawn/ Turf Area	Amenities																
				Tennis Courts	Basketball Courts	Baseball Fields	Soccer Fields	Multipurpose Fields	Fitness Zones	Skate Parks	Picnic Shelters	Playgrounds	Swimming Pools	Splash Pads	Dog Parks	Gymnasiums	Community/Rec Centers	Senior Centers	Restrooms	Total
Oak Spring Park	Good																		0	
	Fair										1	1						1	3	
	Poor																		0	
Pacific Crest Park	Good											1						1	2	
	Fair							1											1	
	Poor																		0	
Pamplico Park	Good																		0	
	Fair				1							1						1	3	
	Poor																		0	
River Village Park	Good							1			1	1						1	4	
	Fair																		0	
	Poor																		0	
Santa Clarita Park	Good																		0	
	Fair				1	1						1	1				1		6	
	Poor																		0	
Saugus High School JUA	Good																		0	
	Fair																		0	
	Poor																		0	

### AMENITY CONDITIONS SUMMARY



Oak Spring Park



Pacific Crest Park



Pamplico Park



River Village Park



Santa Clarita Park



# AMENITY QUANTITIES AND CONDITIONS

Park Name	Condition	General Infrastructure Condition	Open Lawn/ Turf Area	Amenities																
				Tennis Courts	Basketball Courts	Baseball Fields	Soccer Fields	Multipurpose Fields	Fitness Zones	Skate Parks	Picnic Shelters	Playgrounds	Swimming Pools	Splash Pads	Dog Parks	Gymnasiums	Community/Rec Centers	Senior Centers	Restrooms	Total
Todd Longshore Park	Good																			0
	Fair							1			1	1							1	4
	Poor																			0
Valencia Heritage Park	Good																			0
	Fair			3				3			1	1							1	9
	Poor																			0
Totals:	Good			0	0	0	0	2	0	0	3	3	0	0	1	0	0	0	3	12
	Fair			5	10	9	11	18	3	0	10	15	2	0	1	0	3	0	15	102
	Poor			0	0	0	0	0	0	0	0	1	0	0	0	0	0	0	0	1

## AMENITY CONDITIONS SUMMARY

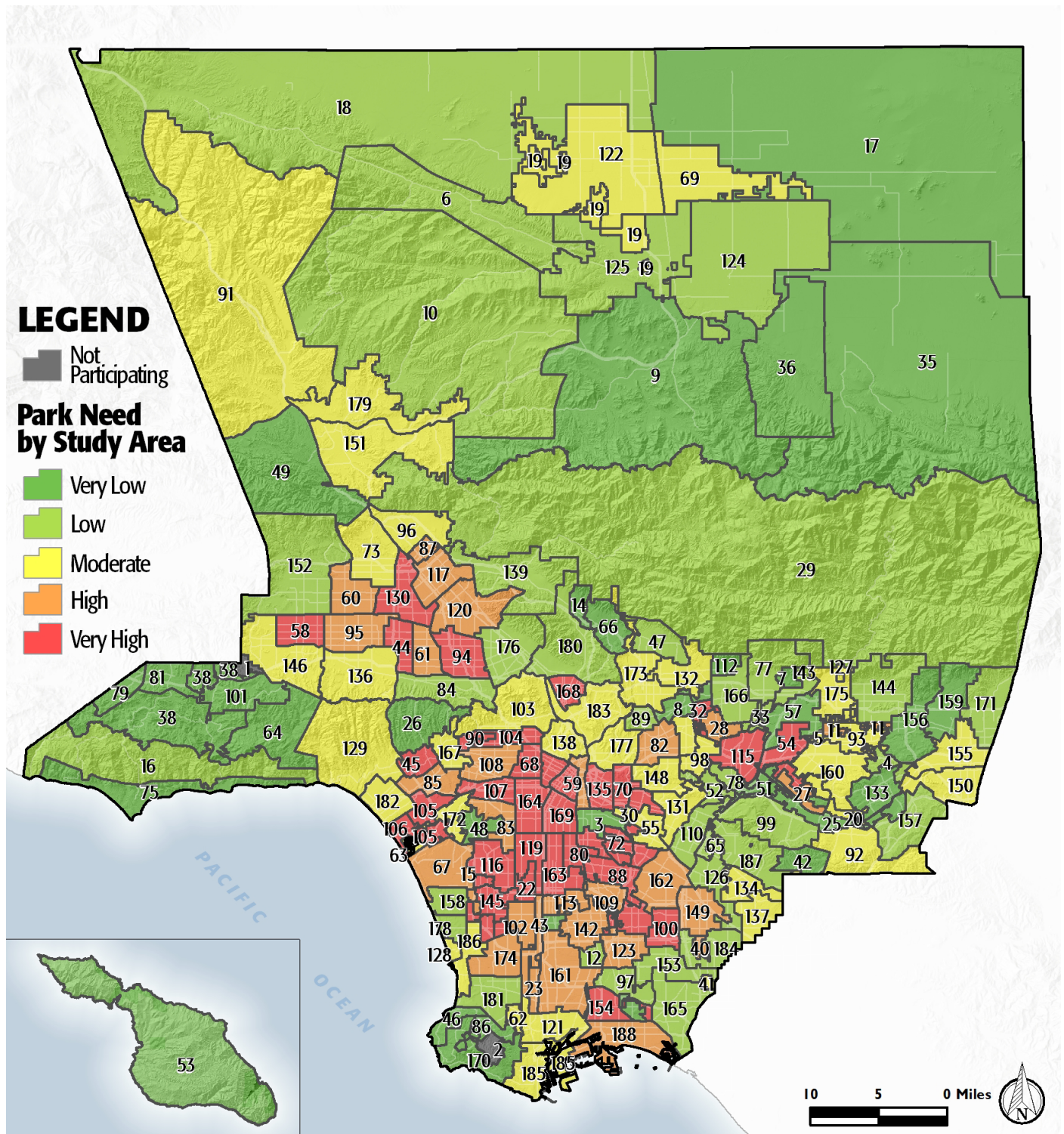


Miles of trails inside parks: 4.5  
Miles of trails outside of parks: 0.3

# PARK NEEDS FRAMEWORK: COUNTYWIDE ASSESSMENT OF NEED

The results of the analysis of the park metrics were used to determine an overall park need level for each Study Area. Please refer to Section 3.0 Park Needs Framework of the main report for additional information.

Santa Clarita - North (#179) has a moderate park need.



# PROJECT COST ESTIMATES



Study Area:

Santa Clarita - North

Study Area ID

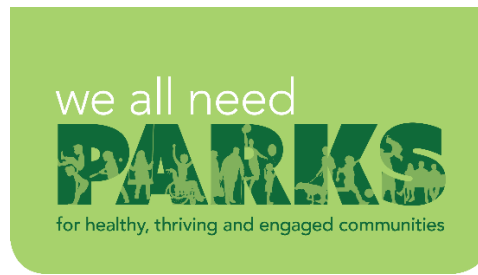
179

## Prioritized Projects

Project Number	Project Description	Cost
1-2	Build New Neighborhood Park in the General Vicinity of Canyon County Community Center	\$9,667,500
	New Park Tasks:	
	Infrastructure/General	\$3,280,000
	Community/Recreation Center	\$6,300,000
	Trails	\$87,500
3	Add Infrastructure/General at Discovery River Park	\$5,280,000
4	Add Trails at Discovery River Park	\$87,500
5	Add Picnic Shelters at Discovery River Park	\$250,000
6-8	Build New Neighborhood Park in the General Vicinity of Saugus Community Center	\$10,431,162
	New Park Tasks:	
	Land Acquisition	\$851,162
	Infrastructure/General	\$3,280,000
	Community/Recreation Center	\$6,300,000
9-10	Build New Pocket Park in the General Vicinity of Santa Clara River Trail	\$1,271,860
	New Park Tasks:	
	Infrastructure/General	\$780,000
	Land Acquisition	\$141,860
	Trails	\$350,000
Study Area Total Costs		
	TOTAL COST FOR PRIORITIZED PROJECTS	\$26,988,022
	TOTAL DEFERRED MAINTENANCE*	\$33,394,304
	Replace amenities in "poor" condition	\$500,000
	Repair amenities in "fair" condition	\$32,894,304
	GRAND TOTAL	\$60,382,326

Each Study Area prioritized 10 projects. These project lists are not intended to supersede or replace any planning documents, nor to obligate the lead agency to implement these projects. For further discussion of projects, please refer to the "Potential Park Projects and Cost Estimates" section of the report.

\*Does not include repairs or replacement projects listed as prioritized projects.



**Study Area Name:**

Santa Clarita North

## Prioritized Project Reporting Form

Please provide descriptions of the park projects prioritized during your Study Area's community engagement workshop. The details you provide will contribute to cost estimates that will be included with your projects in the final report of the LA Countywide Park Needs Assessment. Please be as specific as possible by providing all details that may have an impact on cost estimates (including quantities and acres where appropriate). Along with this form, please attach copies or scans of all voting forms presented at your engagement workshop.

**Please return this form to [robinson@parks.lacounty.gov](mailto:robinson@parks.lacounty.gov) no later than February 29, 2016**

1. Project Name: Canyon Country Community Center (New)

Project Location (address, assessor's parcel number, or nearest intersection):

18322 and 18410 Sierra Highway

Project Type (choose one):

- ☐ Repairs to Existing Amenities
- ☐ Add/Replace Amenities in Existing
- ☒ Build New Park or Specialty Facility (include acreage in description) Brief

Description of Project:

The project will include the construction of general infrastructure improvements, an approximately 20,000 square foot multi-use community center on a City-owned 6.5 acre site. (2 Projects)



LOS ANGELES COUNTYWIDE COMPREHENSIVE  
PARK & RECREATION NEEDS ASSESSMENT



2. Project Name: Canyon Country Community Center (New)

Project Location (address, assessor's parcel number, or nearest intersection):

18322 and 18410 Sierra Highway

Project Type (choose one):

- ☐ Repairs to Existing Amenities
- ☐ Add/Replace Amenities in Existing Park
- ☒ Build New Park or Specialty Facility (include acreage in description)

Brief Description of Project:

See above project

3. Project Name: Canyon Country Community Center Trail Access

Project Location (address, assessor's parcel number, or nearest intersection):

18322 and 18410 Sierra Highway

Project Type (choose one):

- ☐ Repairs to Existing Amenities
- ☐ Add/Replace Amenities in Existing Park
- ☒ Build New Park or Specialty Facility (include acreage in description)

Brief Description of Project:

Connect the community center with the existing Santa Clara River Trail located approximately .25 miles south. The trail will provide a critical pedestrian link across Soledad Canyon Road.



4. Project Name: Discovery River Park Expansion

Project Location (address, assessor's parcel number, or nearest intersection):

27555 Canyon View Drive

Project Type (choose one):

- ☐ Repairs to Existing Amenities
- ☒ Add/Replace Amenities in Existing Park
- ☐ Build New Park or Specialty Facility (include acreage in description)

Brief Description of Project:

General infrastructure improvements including parking, restrooms, picnic shelters, walking paths and landscaping on approximately 5 acres of a 25 acre site.

5. Project Name: Discovery River Park Trail Access

Project Location (address, assessor's parcel number, or nearest intersection):

27555 Canyon View Drive

Project Type (choose one):

- ☐ Repairs to Existing Amenities
- ☒ Add/Replace Amenities in Existing Park
- ☐ Build New Park or Specialty Facility (include acreage in description)

Brief Description of Project:

Extend the Santa Clara River Trail north and west across the park approximately .25 miles to connect with Phase V of the regional trail.



6. Project Name: Santa Clara River Trail Phase V

Project Location (address, assessor's parcel number, or nearest intersection):

Terminus of Phase IV to Discovery River Park

Project Type (choose one):

- ☐ Repairs to Existing Amenities
- ☐ Add/Replace Amenities in Existing Park
- ☒ Build New Park or Specialty Facility (include acreage in description)

Brief Description of Project:

Construct an approximately one mile extension of the Santa Clara River Trail from it's current terminus to Discovery River Park. The trail consists of a 16' paved bike path and adjacent 12' natural surface trail with signage and fencing.

7. Project Name: Saugus Community Center (Library)

Project Location (address, assessor's parcel number, or nearest intersection):

Location TBD

Project Type (choose one):

- ☐ Repairs to Existing Amenities
- ☐ Add/Replace Amenities in Existing Park
- ☒ Build New Park or Specialty Facility (include acreage in description)

Brief Description of Project:

Acquisition of land and construction of a 33,000 - 40,000 square foot facility serving a wide range of community needs including recreational classes and activities, a library, arts, and community meetings. (3 Projects)



8. Project Name: Saugus Community Center (Library)

Project Location (address, assessor's parcel number, or nearest intersection):

Location TBD

Project Type (choose one):

- ☐ Repairs to Existing Amenities
- ☐ Add/Replace Amenities in Existing Park
- ☒ Build New Park or Specialty Facility (include acreage in description)

Brief Description of Project:

See above

9. Project Name: Saugus Community Center (Library)

Project Location (address, assessor's parcel number, or nearest intersection):

Location TBD

Project Type (choose one):

- ☐ Repairs to Existing Amenities
- ☐ Add/Replace Amenities in Existing Park
- ☒ Build New Park or Specialty Facility (include acreage in description)

Brief Description of Project:

See above





10. Project Name:

Project Location (address, assessor's parcel number, or nearest intersection):

Project Type (choose one):

- ☐ Repairs to Existing Amenities
- ☐ Add/Replace Amenities in Existing Park
- ☐ Build New Park or Specialty Facility (include acreage in description)

Brief Description of Project:

If the projects reported on this form were subject to any type review process, please give a brief description of that process:

Each of these projects has been vetted through an extensive public engagement process including one or more of the following:

The City of Santa Clarita Parks, recreation and Open Space Master Plan (2008)

A project-specific community engagement process resulting in a Council-Approved Park Master Plan

Identified within the Santa Clarita 2020 Plan, adopted by the City Council in 2015

**Please return this form to [rrobinson@parks.lacounty.gov](mailto:rrobinson@parks.lacounty.gov)  
no later than **February 29, 2016****

