



City of Rolling Hills Estates / Unincorporated Westfield

STUDY AREA PROFILE

STUDY AREA ID #86

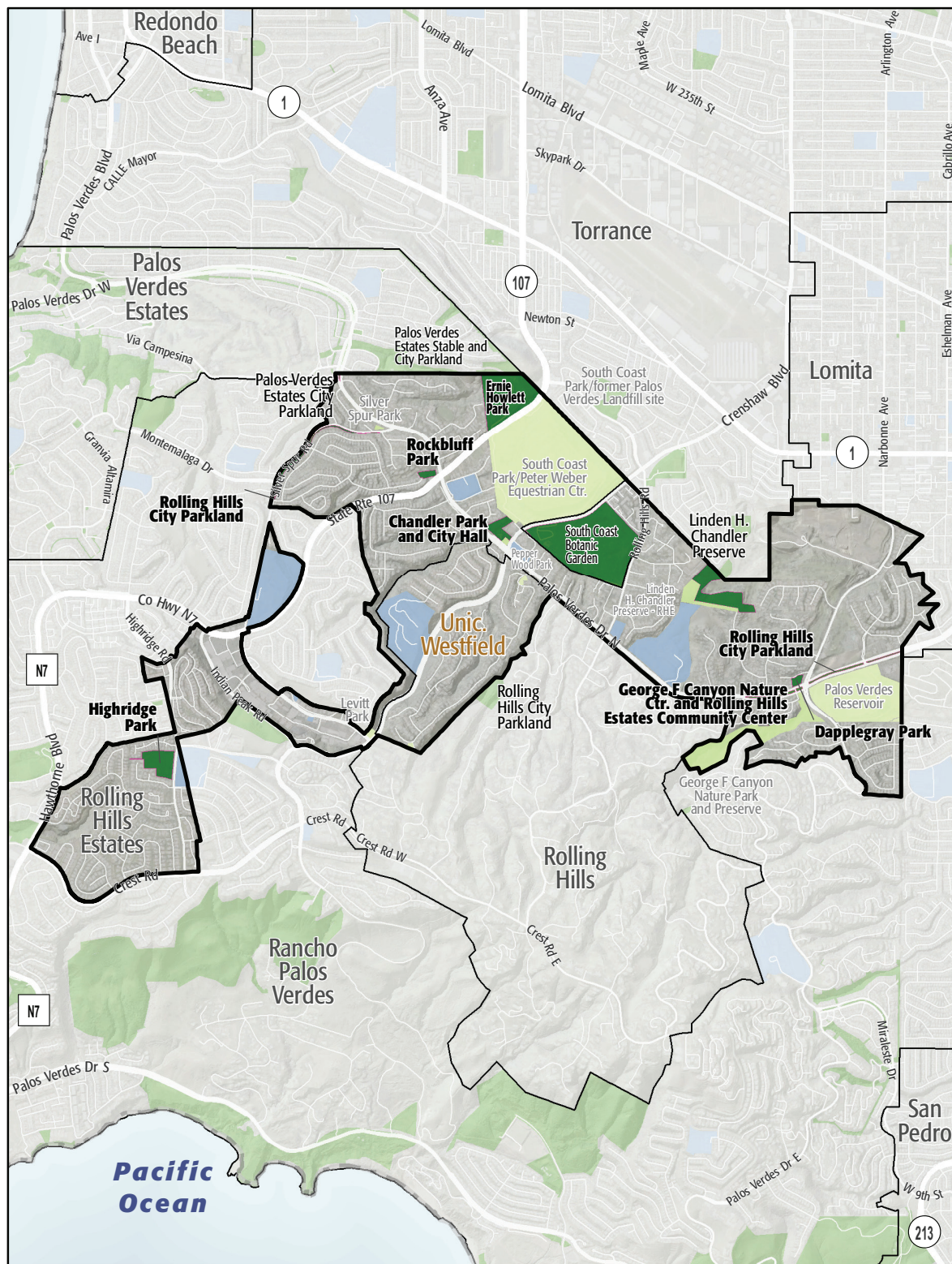
- BASE MAP
- PARK METRICS
- WHERE ARE PARKS MOST NEEDED
- AMENITY QUANTITIES AND CONDITIONS
- PARK NEEDS FRAMEWORK
- COST ESTIMATES

Note: This Study Area did not hold a community workshop.





STUDY AREA BASE MAP



City of Rolling Hills Estates /
Unincorporated Westfield

- Existing Park
- Existing Park Outside Study Area
- Existing School
- Other Open Space

PARK METRICS



PARK LAND: Is there enough park land for the population?

61.1 PARK ACRES
within study area

10,191
POPULATION

6 PARK ACRES
PER 1,000

The county average is 3.3 park acres per 1,000

*This section does not include the 40.9 acres of regional open space, nature preserves, or State and National Forest land in this Study Area.

PARK ACCESSIBILITY:
Is park land located where
everyone can access it?

61% of population living
WITHIN 1/2 MILE
of a park

The county average is 49% of the population living
within 1/2 mile of a park

PARK PRESSURE

How much park land is available to residents in the area around each park?

Chandler Park and City Hall (5.29 Acres)
5.42 park acres per 1,000

Dapplegray Park (1.47 Acres)
1.88 park acres per 1,000

Ernie Howlett Park (34.41 Acres)
196.48 park acres per 1,000

**George F Canyon Nature Park and
Preserve (0.34 Acres)**
0.39 park acres per 1,000

Highridge Park (10.67 Acres)
9.84 park acres per 1,000

Rockbluff Park (1.7 Acres)
1.08 park acres per 1,000

**Rolling Hills Estates City Parkland (7.2
Acres)**
5.67 park acres per 1,000

WHERE ARE PARKS MOST NEEDED?

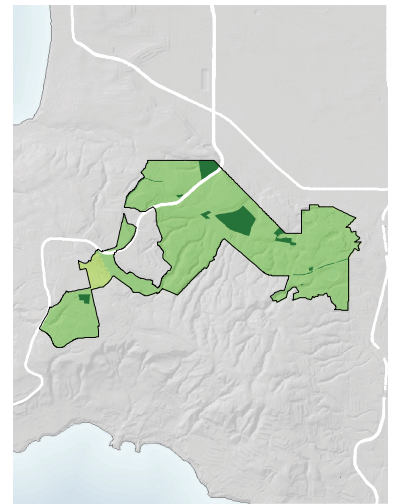
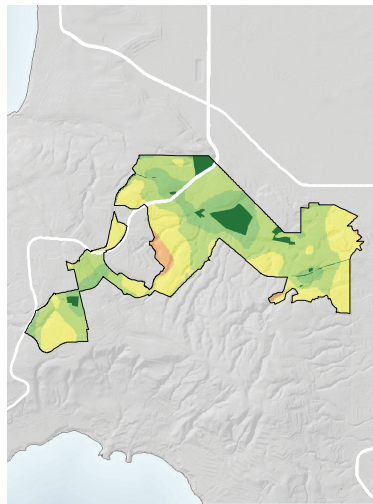
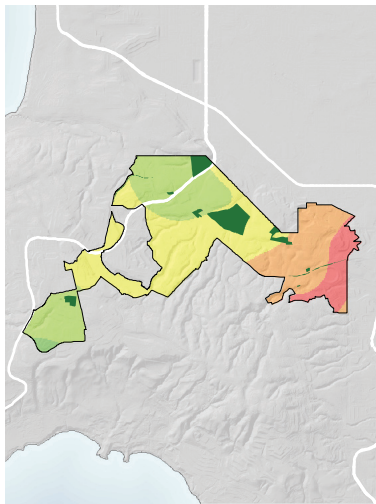
PARK ACRE NEED

+

DISTANCE TO PARKS

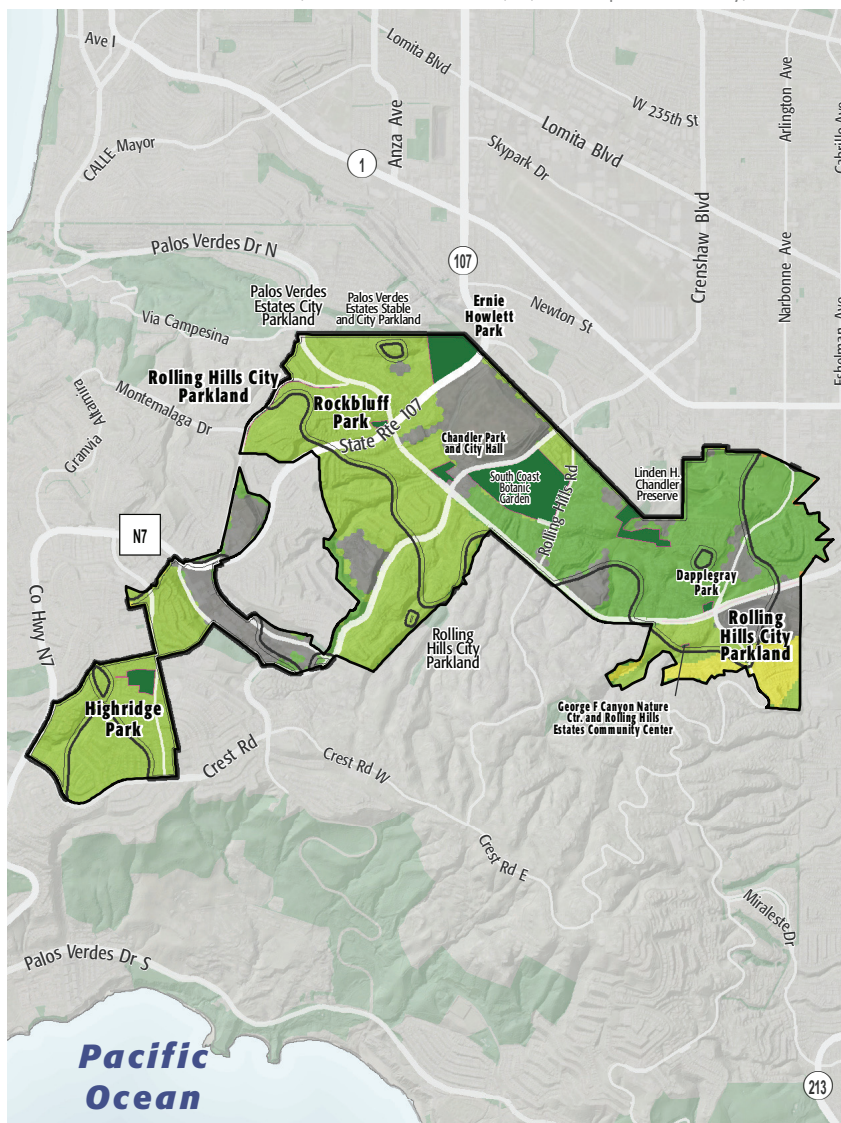
+

POPULATION DENSITY



= PARK NEED

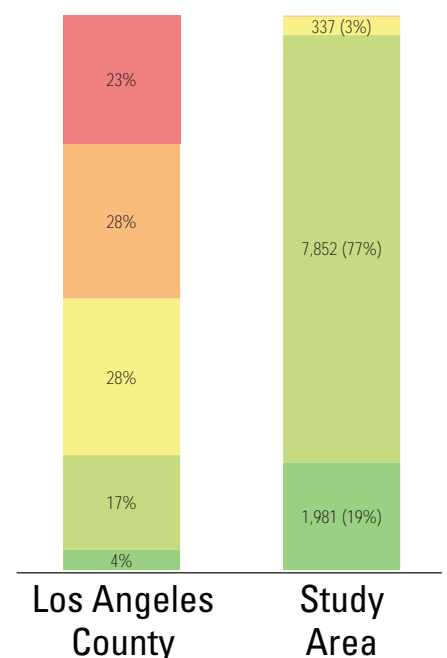
*Calculated using the following weighting: (20% x Park Acre Need) + (20% x Distance to Parks) + (60% x Population Density)



PARK NEED CATEGORY

- Very High
- High
- Moderate
- Low
- Very Low
- No Population
- Area within 1/2 mile walk of a park

HOW MANY PEOPLE NEED PARKS?



AMENITY QUANTITIES AND CONDITIONS

Park Name	Condition	General Infrastructure Condition	Open Lawn/ Turf Area	Amenities																
				Tennis Courts	Basketball Courts	Baseball Fields	Soccer Fields	Multipurpose Fields	Fitness Zones	Skate Parks	Picnic Shelters	Playgrounds	Swimming Pools	Splash Pads	Dog Parks	Gymnasiums	Community/Rec Centers	Senior Centers	Restrooms	Total
Chandler Park and City Hall	Good																		0	
	Fair																		0	
	Poor																		0	
Dapplegray Park	Good																		0	
	Fair																		0	
	Poor																		0	
Ernie Howlett Park	Good			8	1	3	2					1						3	18	
	Fair																		0	
	Poor																		0	
George F Canyon Nature Park and Preserve	Good															1			1	
	Fair																		0	
	Poor																		0	
Highridge Park	Good					1	2					1						1	5	
	Fair																		0	
	Poor																		0	
Rockbluff Park	Good											1							1	
	Fair																		0	
	Poor																		0	

AMENITY CONDITIONS SUMMARY



Ernie Howlett Park



George F Canyon
Nature Park and



Highridge Park



Rockbluff Park

AMENITY QUANTITIES AND CONDITIONS

Park Name	Condition	General Infrastructure Condition	Open Lawn/ Turf Area	Amenities																
				Tennis Courts	Basketball Courts	Baseball Fields	Soccer Fields	Multipurpose Fields	Fitness Zones	Skate Parks	Picnic Shelters	Playgrounds	Swimming Pools	Splash Pads	Dog Parks	Gymnasiums	Community/Rec Centers	Senior Centers	Restrooms	Total
Rolling Hills Estates City Parkland	Good																		0	
	Fair																		0	
	Poor																		0	
Totals:	Good			8	1	4	4	0	0	0	0	3	0	0	0	0	1	0	4	25
	Fair			0	0	0	0	0	0	0	0	0	0	0	0	0	0	0	0	
	Poor			0	0	0	0	0	0	0	0	0	0	0	0	0	0	0	0	

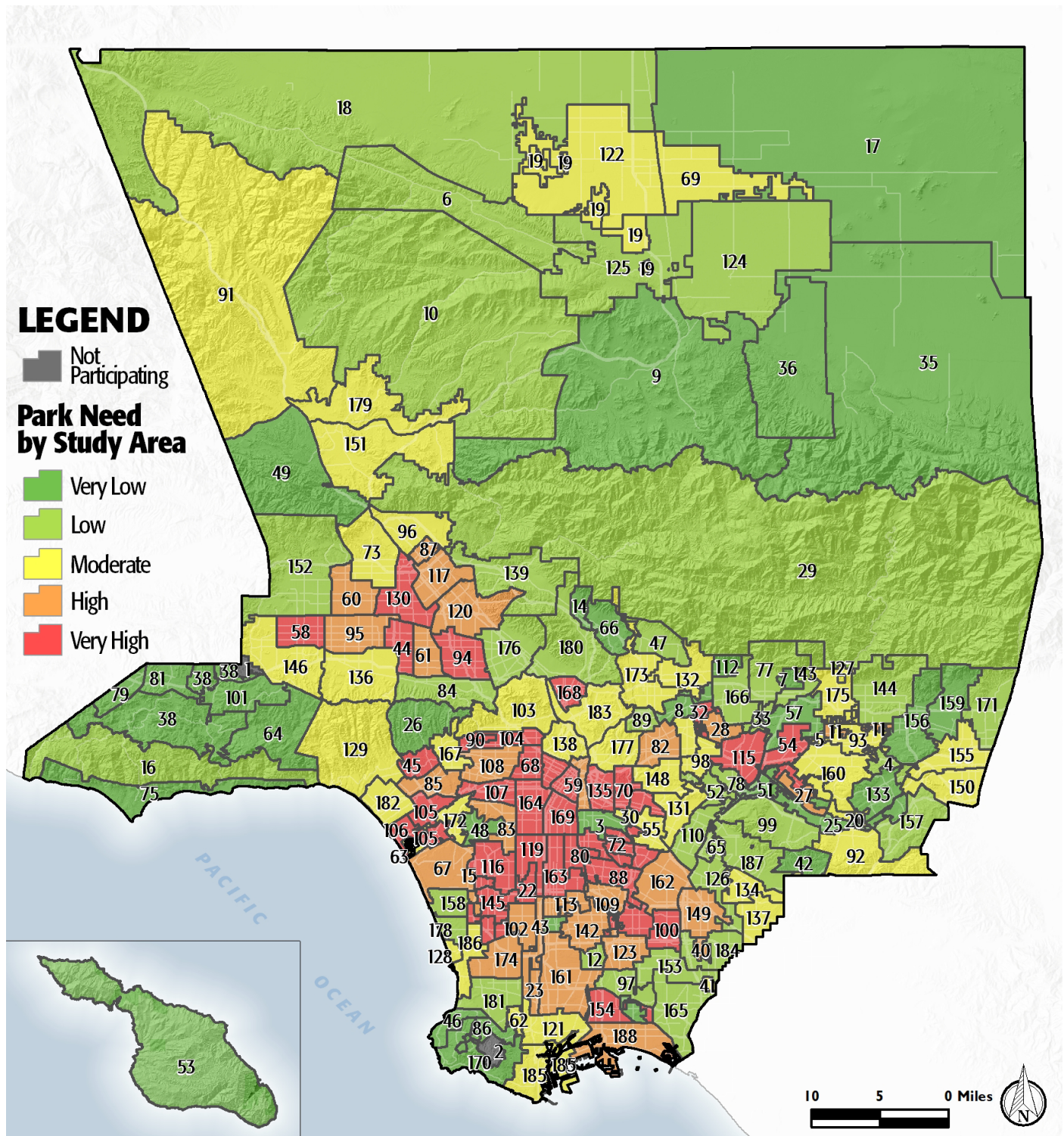
Miles of trails inside parks: 0.9

Miles of trails outside of parks: 8

PARK NEEDS FRAMEWORK: COUNTYWIDE ASSESSMENT OF NEED

The results of the analysis of the park metrics were used to determine an overall park need level for each Study Area. Please refer to Section 3.0 Park Needs Framework of the main report for additional information.

City of Rolling Hills Estates / Unincorporated Westfield (#86) has a very low park need.



PROJECT COST ESTIMATES



Study Area:

City of Rolling Hills Estates / Unincorporated Westfield

Study Area ID

86

Prioritized Projects

Project Number	Project Description	Cost
No projects		
Study Area Total Costs		
TOTAL COST FOR PRIORITIZED PROJECTS		
TOTAL DEFERRED MAINTENANCE*		\$0
Replace amenities in "poor" condition		\$0
Repair amenities in "fair" condition		\$0
GRAND TOTAL		

Each Study Area prioritized 10 projects. These project lists are not intended to supersede or replace any planning documents, nor to obligate the lead agency to implement these projects. For further discussion of projects, please refer to the "Potential Park Projects and Cost Estimates" section of the report.

*Does not include repairs or replacement projects listed as prioritized projects.