

we all need



for healthy, thriving and engaged LA communities

City of Irwindale

STUDY AREA PROFILE

STUDY AREA ID #57

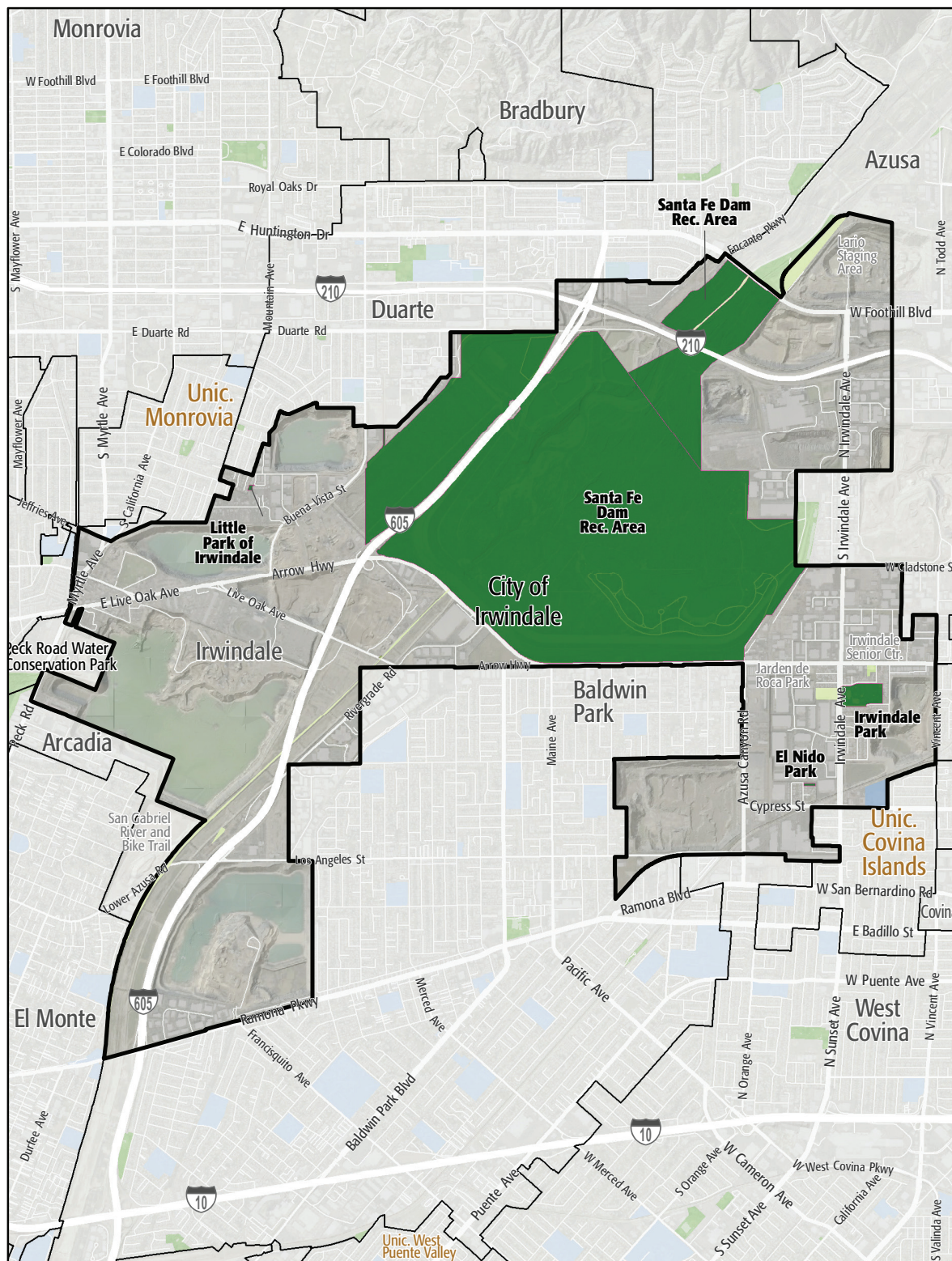
- BASE MAP
- PARK METRICS
- WHERE ARE PARKS MOST NEEDED
- AMENITY QUANTITIES AND CONDITIONS
- PROJECT COST ESTIMATES
- PARK NEEDS FRAMEWORK
- Note: This Study Area did not hold a community workshop



Los Angeles Countywide Comprehensive Park & Recreation Needs Assessment
APPENDIX A



STUDY AREA BASE MAP



City of Irwindale

- Existing Park
- Existing Park Outside Study Area
- Existing School
- Other Open Space

PARK METRICS



PARK LAND: Is there enough park land for the population?

16.1 PARK ACRES
within study area

1,478
POPULATION

10.9 PARK ACRES
PER 1,000

1,898.90 REGIONAL PARK ACRES
within study area

1,284.80 REGIONAL PARK ACRES PER 1,000

The county average is 3.3 park acres per 1,000

PARK ACCESSIBILITY:

Is park land located where
everyone can access it?

35%

of population living
WITHIN 1/2 MILE
of a park

The county average is 49% of the population living
within 1/2 mile of a park

PARK PRESSURE

How much park land is available to residents in the area around each park?

El Nido Park (0.49 Acres)

0.11 park acres per 1,000

Irwindale Park (15.25 Acres)

3.31 park acres per 1,000

Santa Fe Dam Rec. Area (1,898.89 Acres)

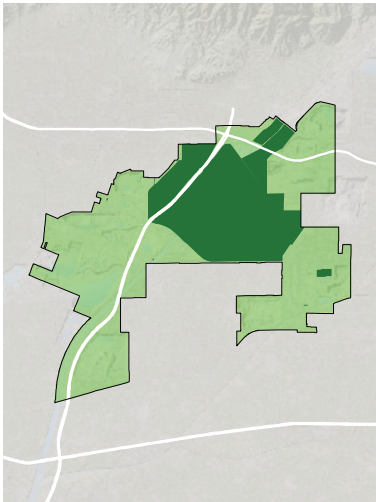
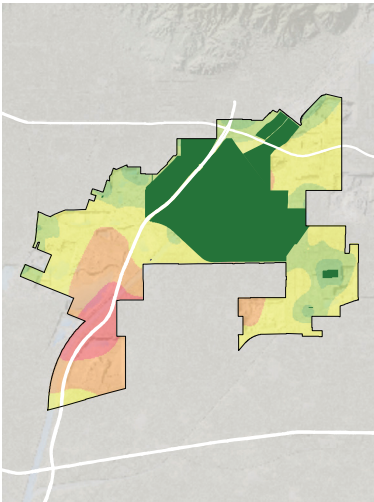
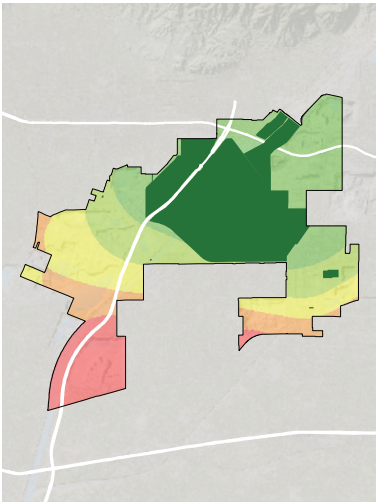
245.28 park acres per 1,000

The Little Park of Irwindale (0.4 Acres)

1.1 park acres per 1,000

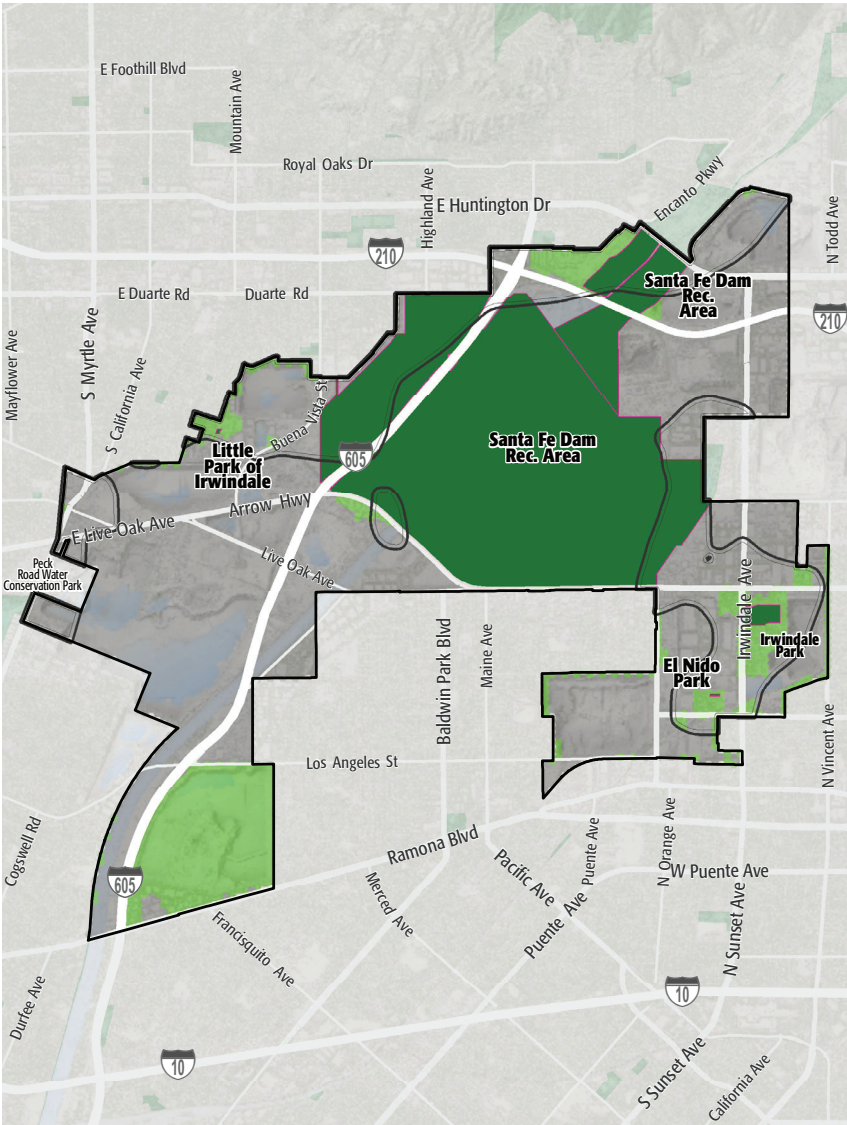
WHERE ARE PARKS MOST NEEDED?

PARK ACRE NEED + DISTANCE TO PARKS + POPULATION DENSITY



= PARK NEED

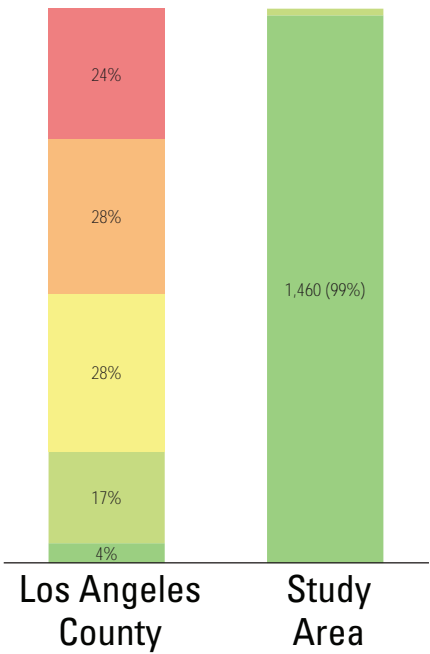
*Calculated using the following weighting: (20% x Park Acre Need) + (20% x Distance to Parks) + (60% x Population Density)



PARK NEED CATEGORY

- Very High
- High
- Moderate
- Low
- Very Low
- No Population
- Area within 1/2 mile walk of a park

HOW MANY PEOPLE NEED PARKS?



AMENITY QUANTITIES AND CONDITIONS

Park Name	Condition	General Infrastructure Condition	Open Lawn/ Turf Area	Amenities																
				Tennis Courts	Basketball Courts	Baseball Fields	Soccer Fields	Multipurpose Fields	Fitness Zones	Skate Parks	Picnic Shelters	Playgrounds	Swimming Pools	Splash Pads	Dog Parks	Gymnasiums	Community/Rec Centers	Senior Centers	Restrooms	Total
El Nido Park	Good										2								2	
	Fair											1							1	
	Poor																		0	
Irwindale Park	Good			1	1	1		1		1	2	1	2			1	1		2	14
	Fair																		0	
	Poor																		0	
Santa Fe Dam Recreational Area	Good							1			5	2							8	
	Fair																	9	9	
	Poor											1		1					2	
The Little Park of Irwindale	Good										1	1							2	
	Fair																		0	
	Poor																		0	
Totals:	Good			1	1	1	0	1	1	1	10	4	2	0	0	1	1	0	2	26
	Fair			0	0	0	0	0	0	0	0	1	0	0	0	0	0	9	10	
	Poor			0	0	0	0	0	0	0	0	1	0	1	0	0	0	0	2	

AMENITY CONDITIONS SUMMARY



El Nido Park



Irwindale Park



Santa Fe Dam Recreational Area



The Little Park of Irwindale

Miles of trails inside parks: 1.4

Miles of trails outside of parks: 2.6

PARK NEEDS FRAMEWORK: COUNTYWIDE ASSESSMENT OF NEED

The results of the analysis of the park metrics were used to determine an overall park need level for each Study Area. Please refer to Section 3.0 Park Needs Framework of the main report for additional information.

City of Irwindale (#57) has a very low park need.



PROJECT COST ESTIMATES



Study Area:
City of Irwindale

Study Area ID
57

Prioritized Projects

Project Number	Project Description	Cost
No Projects		

Study Area Total Costs

TOTAL COST FOR PRIORITIZED PROJECTS		
TOTAL DEFERRED MAINTENANCE*		\$123,452,032
Replace amenities in "poor" condition		\$17,525,676
Repair amenities in "fair" condition		\$105,926,356
GRAND TOTAL		\$123,452,032

Each Study Area prioritized 10 projects. These project lists are not intended to supersede or replace any planning documents, nor to obligate the lead agency to implement these projects. For further discussion of projects, please refer to the "Potential Park Projects and Cost Estimates" section of the report.

*Does not include repairs or replacement projects listed as prioritized projects.