



# City of La Habra Heights

## STUDY AREA PROFILE

STUDY AREA ID #42

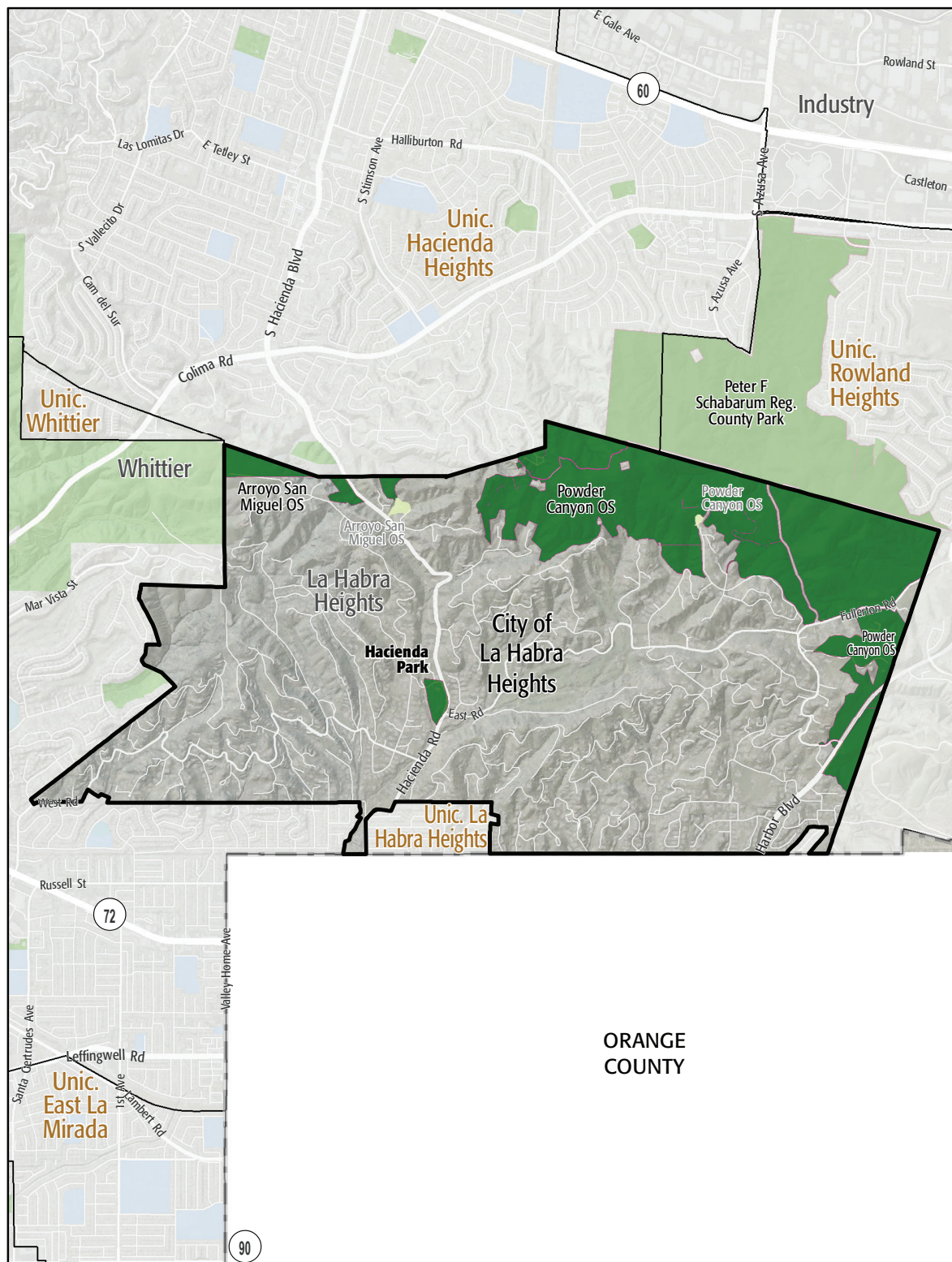
- BASE MAP
- PARK METRICS
- WHERE ARE PARKS MOST NEEDED
- AMENITY QUANTITIES AND CONDITIONS
- PARK NEEDS FRAMEWORK
- COST ESTIMATES

Note: This Study Area did not hold a community workshop





# STUDY AREA BASE MAP



City of La Habra Heights

- Existing Park
- Existing Park Outside Study Area
- Existing School
- Other Open Space

# PARK METRICS



## PARK LAND: Is there enough park land for the population?

**10.8** PARK ACRES  
within study area

**5,461**  
POPULATION

**2** PARK ACRES  
PER 1,000

The county average is 3.3 park acres per 1,000

\*This section does not include the 34.1 acres of regional open space, nature preserves, or State and National Forest land in this Study Area.

**PARK ACCESSIBILITY:**  
Is park land located where  
everyone can access it?

**26%** of population living  
WITHIN 1/2 MILE  
of a park

The county average is 49% of the population living  
within 1/2 mile of a park

## PARK PRESSURE

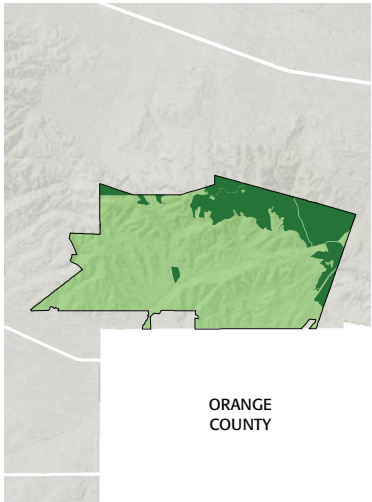
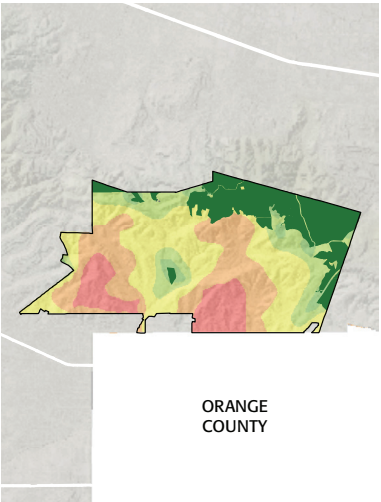
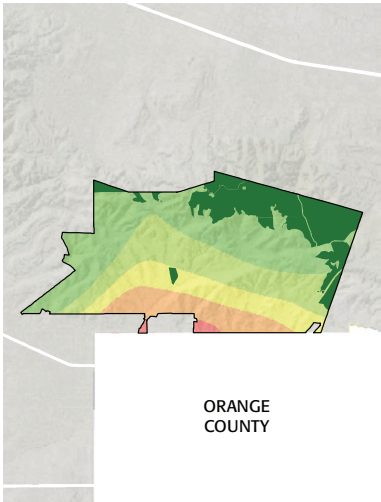
How much park land is available to residents in the area around each park?

**Hacienda Park (10.81 Acres)**  
8.99 park acres per 1,000



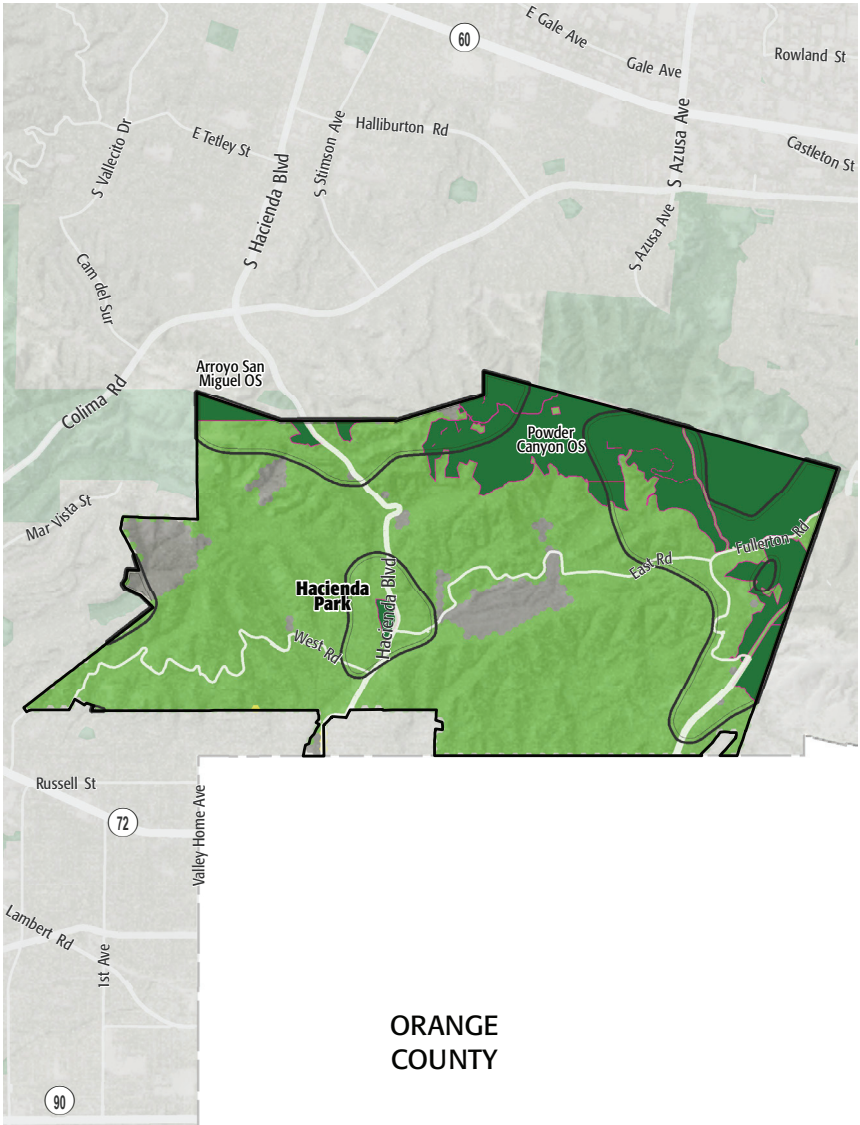
# WHERE ARE PARKS MOST NEEDED?

PARK ACRE NEED + DISTANCE TO PARKS + POPULATION DENSITY



= PARK NEED

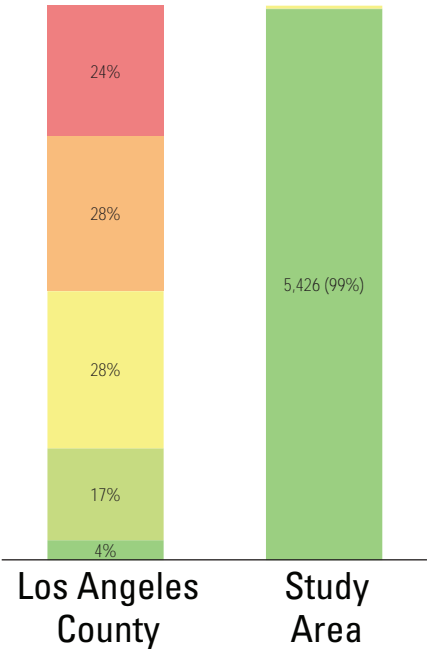
\*Calculated using the following weighting: (20% x Park Acre Need) + (20% x Distance to Parks) + (60% x Population Density)



## PARK NEED CATEGORY

- Very High
- High
- Moderate
- Low
- Very Low
- No Population
- Area within 1/2 mile walk of a park

## HOW MANY PEOPLE NEED PARKS?



## AMENITY QUANTITIES AND CONDITIONS

Park Name	Condition	General Infrastructure Condition	Open Lawn/ Turf Area	Amenities																
				Tennis Courts	Basketball Courts	Baseball Fields	Soccer Fields	Multipurpose Fields	Fitness Zones	Skate Parks	Picnic Shelters	Playgrounds	Swimming Pools	Splash Pads	Dog Parks	Gymnasiums	Community/Rec Centers	Senior Centers	Restrooms	Total
Hacienda Park	Good											2				1				3
	Fair																			0
	Poor																			0
Totals:	Good			0	0	0	0	0	0	0	0	2	0	0	0	1	0	0	0	3
	Fair			0	0	0	0	0	0	0	0	0	0	0	0	0	0	0	0	0
	Poor			0	0	0	0	0	0	0	0	0	0	0	0	0	0	0	0	0

### AMENITY CONDITIONS SUMMARY



Hacienda Park

Miles of trails inside parks: 0.4

Miles of trails outside of parks: 5.1



# PARK NEEDS FRAMEWORK: COUNTYWIDE ASSESSMENT OF NEED

The results of the analysis of the park metrics were used to determine an overall park need level for each Study Area. Please refer to Section 3.0 Park Needs Framework of the main report for additional information.

City of La Habra Heights (#42) has a very low park need.



# PROJECT COST ESTIMATES



Study Area:

City of La Habra Heights

Study Area ID

42

### Prioritized Projects

Project Number	Project Description	Cost
No Projects		

### Study Area Total Costs

TOTAL COST FOR PRIORITIZED PROJECTS		
TOTAL DEFERRED MAINTENANCE*		\$741,329
Replace amenities in "poor" condition		\$140,000
Repair amenities in "fair" condition		\$601,329
GRAND TOTAL		\$741,329

Each Study Area prioritized 10 projects. These project lists are not intended to supersede or replace any planning documents, nor to obligate the lead agency to implement these projects. For further discussion of projects, please refer to the "Potential Park Projects and Cost Estimates" section of the report.

\*Does not include repairs or replacement projects listed as prioritized projects.