



# Unincorporated Santa Monica Mountains - Triunfo Canyon

## STUDY AREA PROFILE

STUDY AREA ID #38

- BASE MAP
- PARK METRICS
- WHERE ARE PARKS MOST NEEDED
- AMENITY QUANTITIES AND CONDITIONS
- PARK NEEDS FRAMEWORK
- PROJECT COST ESTIMATES
- PROJECT REPORTING FORM
- COMMUNITY ENGAGEMENT FORM





- Los Angeles Countywide Comprehensive Park & Recreation Needs Assessment

# PARK METRICS



## PARK LAND: Is there enough park land for the population?

**392.3** PARK ACRES  
within study area

**5,609**  
POPULATION

**69.9** PARK ACRES  
PER 1,000

The county average is 3.3 park acres per 1,000

\*This section does not include the 1,907.2 acres of regional open space, nature preserves, or State and National Forest land in this Study Area.

**PARK ACCESSIBILITY:**  
Is park land located where  
everyone can access it?

**29%**

of population living  
WITHIN 1/2 MILE  
of a park

The county average is 49% of the population living  
within 1/2 mile of a park

## PARK PRESSURE

How much park land is available to residents in the area around each park?

**Gates Canyon Park (8.35 Acres)**

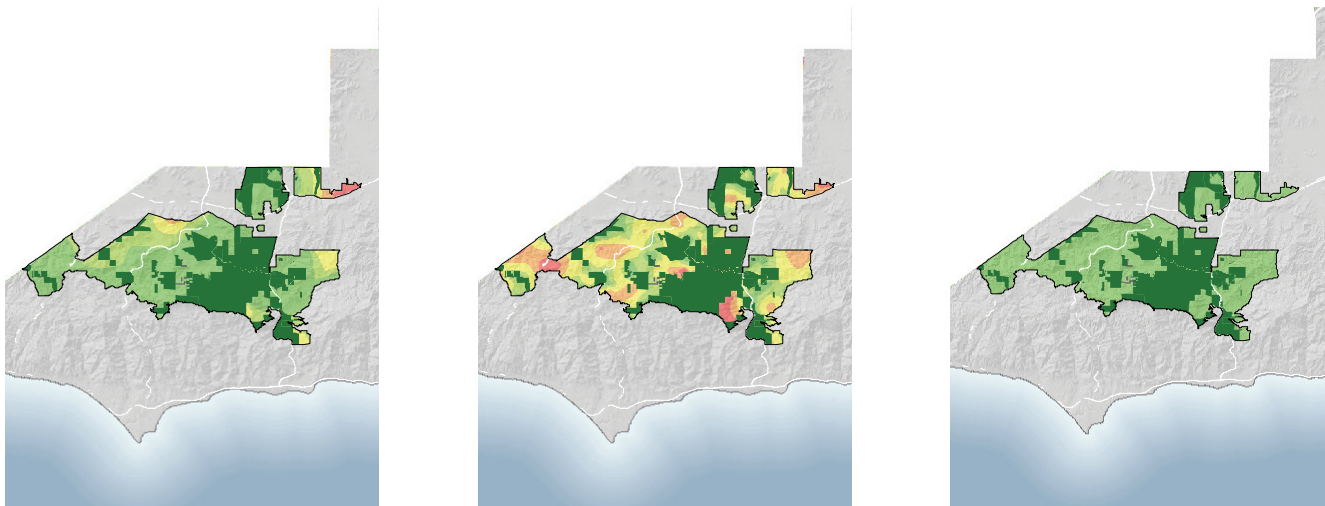
7.1 park acres per 1,000

**King Gillette Ranch (383.91 Acres)**

4,421.63 park acres per 1,000

# WHERE ARE PARKS MOST NEEDED?

PARK ACRE NEED + DISTANCE TO PARKS + POPULATION DENSITY



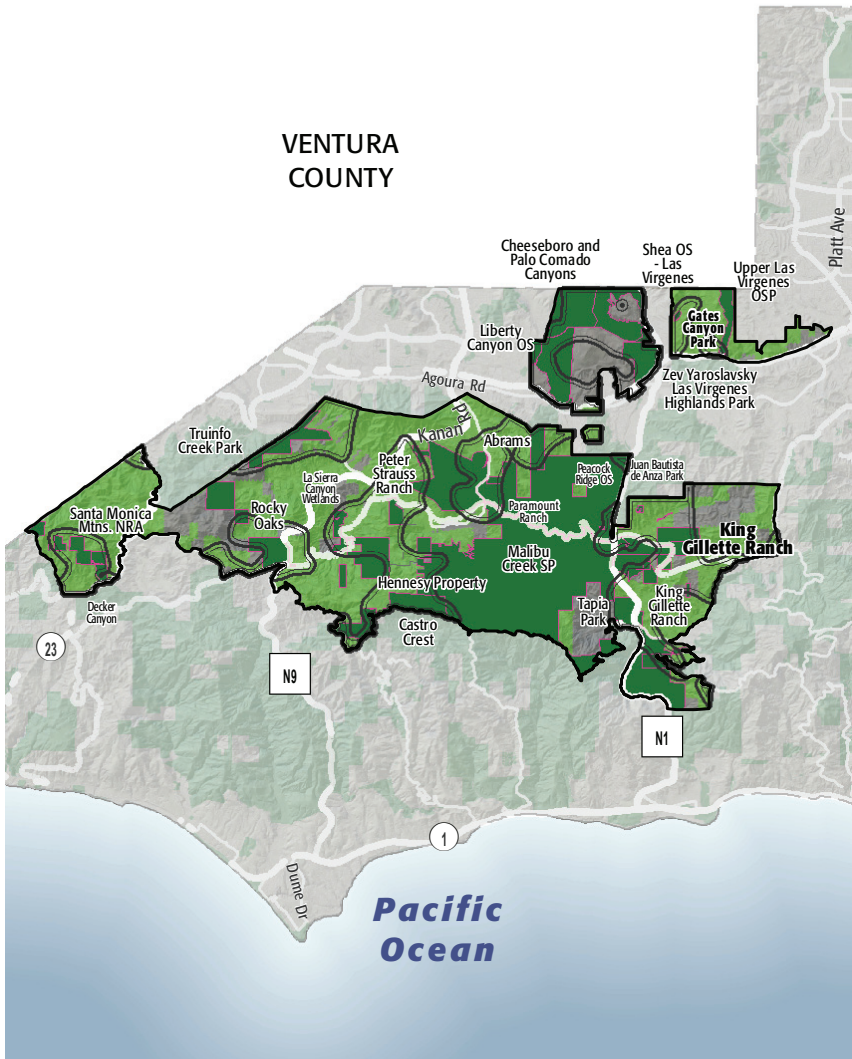
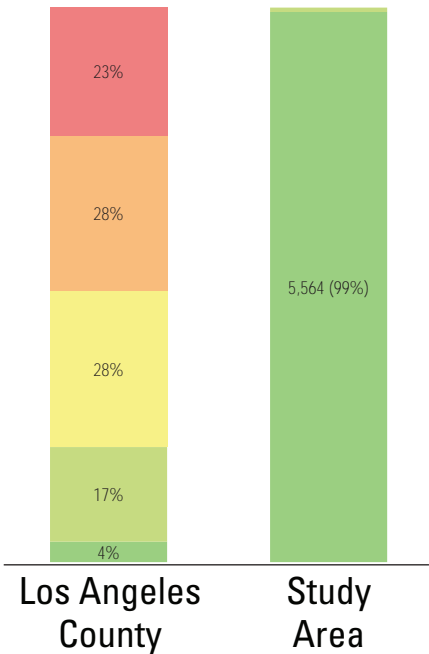
= PARK NEED

\*Calculated using the following weighting: (20% x Park Acre Need) + (20% x Distance to Parks) + (60% x Population Density)

## PARK NEED CATEGORY

- Very High
- High
- Moderate
- Low
- Very Low
- No Population
- Area within 1/2 mile walk of a park

## HOW MANY PEOPLE NEED PARKS?



## AMENITY QUANTITIES AND CONDITIONS

Park Name	Condition	General Infrastructure Condition	Open Lawn/ Turf Area	Amenities															
				Tennis Courts	Basketball Courts	Baseball Fields	Soccer Fields	Multipurpose Fields	Fitness Zones	Skate Parks	Picnic Shelters	Playgrounds	Swimming Pools	Splash Pads	Dog Parks	Gymnasiums	Community/Rec Centers	Senior Centers	Restrooms
Gates Canyon Park	Good			2	1			2			1	2						1	9
	Fair																		0
	Poor																		0
King Gillette Ranch	Good												1						1
	Fair											1							1
	Poor																		0
Totals:	Good			2	1	0	0	2	0	0	1	2	1	0	0	0	0	1	10
	Fair			0	0	0	0	0	0	0	0	0	1	0	0	0	0	0	1
	Poor			0	0	0	0	0	0	0	0	0	0	0	0	0	0	0	0

### AMENITY CONDITIONS SUMMARY



Gates Canyon Park



King Gillette Ranch

Miles of trails inside parks: 0

Miles of trails outside of parks: 45



## PARK NEEDS FRAMEWORK: COUNTYWIDE ASSESSMENT OF NEED

The results of the analysis of the park metrics were used to determine an overall park need level for each Study Area. Please refer to Section 3.0 Park Needs Framework of the main report for additional information.

Unincorporated Santa Monica Mountains - Triunfo Canyon (#38) has a very low park need.



# PROJECT COST ESTIMATES

## Study Area:

Unincorporated Santa Monica Mountains - Triunfo Canyon

Study Area ID

38

### Prioritized Projects

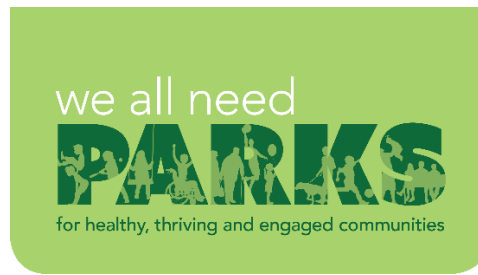
Project Number	Project Description	Cost
1	Add Signage at King Gillette Ranch Trails	\$50,000
2	Add Interpretive Signage and Exhibits at All Parks in Study Area	\$19,600
3	Replace Trails at Trailhead 1	\$350,000
4	Replace Trails at Trailhead 2	\$350,000
5	Replace Trails at Trailhead 3	\$350,000
6	Add Drinking fountains at Trailhead 1	\$5,884,500
7	Add Drinking fountains at Trailhead 2	\$15,000
8	Add Drinking fountains at Trailhead 3	\$15,000
9-10	Build New Community Park in the General Vicinity of Trail from King Gillette Ranch to Malibu Creek State Park	\$7,341,042
	New Park Tasks:	
	Land Acquisition	\$5,591,042
	Trails	\$1,750,000

### Study Area Total Costs

TOTAL COST FOR PRIORITIZED PROJECTS	\$14,375,142
TOTAL DEFERRED MAINTENANCE*	\$22,186,777
Replace amenities in "poor" condition	\$0
Repair amenities in "fair" condition	\$22,186,777
GRAND TOTAL	\$36,561,919

Each Study Area prioritized 10 projects. These project lists are not intended to supersede or replace any planning documents, nor to obligate the lead agency to implement these projects. For further discussion of projects, please refer to the "Potential Park Projects and Cost Estimates" section of the report.

\*Does not include repairs or replacement projects listed as prioritized projects.

**Study Area Name:**

Unincorporated Santa  
Monica Mountains -  
Triunfo Canyon 7070

## Prioritized Project Reporting Form

Please provide descriptions of the park projects prioritized during your Study Area's community engagement workshop. The details you provide will contribute to cost estimates that will be included with your projects in the final report of the LA Countywide Park Needs Assessment. Please be as specific as possible by providing all details that may have an impact on cost estimates (including quantities and acres where appropriate). Along with this form, please attach copies or scans of all voting forms presented at your engagement workshop.

**Please return this form to [robinson@parks.lacounty.gov](mailto:robinson@parks.lacounty.gov) no later than February 29, 2016**

1. Project Name: Trail Signage

Project Location (address, assessor's parcel number, or nearest intersection):

King Gillette Ranch

Project Type (choose one):

- ☐ Repairs to Existing Amenities
- ☒ Add/Replace Amenities in Existing
- ☐ Park Build New Park or Specialty Facility (include acreage in description)

Brief Description of Project:

Install new inter-agency signs for the Inspiration Point Loop trail and the Ridge Trail at all trailheads and intersections



LOS ANGELES COUNTYWIDE COMPREHENSIVE  
PARK & RECREATION NEEDS ASSESSMENT



2. Project Name: Interpretive signs

Project Location (address, assessor's parcel number, or nearest intersection):

All parks

Project Type (choose one):

- ☐ Repairs to Existing Amenities
- ☒ Add/Replace Amenities in Existing Park
- ☐ Build New Park or Specialty Facility (include acreage in description)

Brief Description of Project:

Add interpretive signs including content regarding the implementation of sustainable culture at parks

3. Project Name: Trailhead upgrades

Project Location (address, assessor's parcel number, or nearest intersection):

3 trailheads in study area

Project Type (choose one):

- ☐ Repairs to Existing Amenities
- ☒ Add/Replace Amenities in Existing Park
- ☐ Build New Park or Specialty Facility (include acreage in description)

Brief Description of Project:

Update existing single-use trails to safely accommodate multiple types of users (hikers, bikers, equestrians)



4. Project Name: Water fountains

Project Location (address, assessor's parcel number, or nearest intersection):

3 trailheads in study area

Project Type (choose one):

- ☐ Repairs to Existing Amenities
- ☒ Add/Replace Amenities in Existing Park
- ☐ Build New Park or Specialty Facility (include acreage in description)

Brief Description of Project:

Add drinking fountains to trailheads

5. Project Name: Connector trail

Project Location (address, assessor's parcel number, or nearest intersection):

King Gillette Ranch to Malibu Creek State Park

Project Type (choose one):

- ☐ Repairs to Existing Amenities
- ☐ Add/Replace Amenities in Existing Park
- ☒ Build New Park or Specialty Facility (include acreage in description)

Brief Description of Project:

Create trail connection from King Gillette Ranch to Malibu Creek State Park, across Las Virgenes Canyon Road at Stokes Creek. Land acquisition required.



6. Project Name:

Project Location (address, assessor's parcel number, or nearest intersection):

Project Type (choose one):

- ☐ Repairs to Existing Amenities
- ☐ Add/Replace Amenities in Existing Park
- ☐ Build New Park or Specialty Facility (include acreage in description)

Brief Description of Project:

7. Project Name:

Project Location (address, assessor's parcel number, or nearest intersection):

Project Type (choose one):

- ☐ Repairs to Existing Amenities
- ☐ Add/Replace Amenities in Existing Park
- ☐ Build New Park or Specialty Facility (include acreage in description)

Brief Description of Project:



8. Project Name:

Project Location (address, assessor's parcel number, or nearest intersection):

Project Type (choose one):

- ☐ Repairs to Existing Amenities
- ☐ Add/Replace Amenities in Existing Park
- ☐ Build New Park or Specialty Facility (include acreage in description)

Brief Description of Project:

9. Project Name:

Project Location (address, assessor's parcel number, or nearest intersection):

Project Type (choose one):

- ☐ Repairs to Existing Amenities
- ☐ Add/Replace Amenities in Existing Park
- ☐ Build New Park or Specialty Facility (include acreage in description)

Brief Description of Project:





10. Project Name:

Project Location (address, assessor's parcel number, or nearest intersection):

Project Type (choose one):

- ☐ Repairs to Existing Amenities
- ☐ Add/Replace Amenities in Existing Park
- ☐ Build New Park or Specialty Facility (include acreage in description)

Brief Description of Project:

If the projects reported on this form were subject to any type review process, please give a brief description of that process:

**Please return this form to [rrobinson@parks.lacounty.gov](mailto:rrobinson@parks.lacounty.gov)  
no later than **February 29, 2016****





**MOUNTAINS RECREATION & CONSERVATION AUTHORITY**  
Los Angeles River Center & Gardens  
570 West Avenue Twenty-Six, Suite 100  
Los Angeles, California 90065  
Phone (323) 221-9944 Fax (323) 221-9934

## **Community Engagement Plan: Unincorporated Santa Monica Mountains Study Area**

### **Community Meeting:**

Date: Saturday, January 16<sup>th</sup>

Time: 2:00pm – 3:30pm

Location: King Gillette Ranch, 26800 Mulholland Hwy, Calabasas, CA 91302

Parking available

MRCA staff will be facilitating the community engagement events.

Attendance goal: 100 people per meeting

- Contact information for the primary facilitator:

Name: Cara Meyer

Title: Chief of Special Projects

Address: 570 W. Avenue 26, suite 100, Los Angeles, CA 90065

Phone: (323) 221-9944 ext. 117

Email: [cara.meyer@mrca.ca.gov](mailto:cara.meyer@mrca.ca.gov)

- Contact information for the secondary facilitator:

Name: Sally Garcia

Title: Project Assistant

Address: 570 W. Avenue 26, suite 100, Los Angeles, CA 90065

Phone: (323) 221-9944 ext. 124

Email: [sally.garcia@mrca.ca.gov](mailto:sally.garcia@mrca.ca.gov)

- Contact information for County 'support staff':

1. Kathline King: [KKing@parks.lacounty.gov](mailto:KKing@parks.lacounty.gov)

2. Jeremy Bok: [jbok@parks.lacounty.gov](mailto:jbok@parks.lacounty.gov)

3. Agie Jordan: [ajordan@parks.lacounty.gov](mailto:ajordan@parks.lacounty.gov)

Preference ranking for mandatory facilitator training:

1. Monday – November 16, 2015 10am – 12pm

2. Tuesday – November 17, 2015 6:30pm – 8:30pm

3. Saturday – November 21, 2015 10am – 12pm

Engagement meetings will be promoted as follows and at a minimum of 30 days prior to the meeting dates:

☐ Websites - MRCA, Santa Monica Mountains Conservancy, National Parks Service, State Parks, County Dept. of Parks and Recreation, County Supervisor's Office, Local elected officials, Park Advocacy Groups, and Trails Working Groups.

☐ Social media - MRCA facebook page

## Community Engagement Plan

Pg. 2

☐ Emails – Flyers emailed to community organizations and residents who are on MRCA's 'constant contact list' in the study area and to County's contact lists for area Trails Coalition(s).

☐ Publicly Posted Notices:

☐ Flyers posted at local Community / Senior Centers

☐ Flyers posted at area parks:

King Gillette Ranch, Santa Monica Mountains Anthony C. Beilenson Interagency Visitors Center, various area Trailheads, various Camp sites, Topanga State Park, Temescal Gateway Park, Red Rock Canyon Park, Solstice Canyon Park, Corral Canyon Park, Point Mugu State Park, etc.

☐ Flyers posted at area school: Pepperdine University

☐ Flyers posted at area libraries

☐ Holiday Outreach – Coordination with County Supervisors' Office(s) and other County Departments to advertise and encourage participation in the meeting at holiday events hosted by the County. Additionally, meetings will be mentioned at all MRCA public programs between October thru January by staff. State Parks and National Parks staff will also be recruited to provide outreach and advertise the meetings.



**MOUNTAINS RECREATION & CONSERVATION AUTHORITY**  
Los Angeles River Center & Gardens  
570 West Avenue Twenty-Six, Suite 100  
Los Angeles, California 90065  
Phone (323) 221-9944 Fax (323) 221-9934

**Budget:**  
**Unincorporated Santa Monica Mountains Study Area**

1. Planning/Management/Staff time:	\$1,700
2. Hospitality (drinks, food, paper/plastic goods/etc.)	\$200
3. Marketing/Printing	\$250
4. Child Care	\$250
5. Misc (location rental/contingency)	\$100
<b>TOTAL</b>	<b><u>\$2,500</u></b>