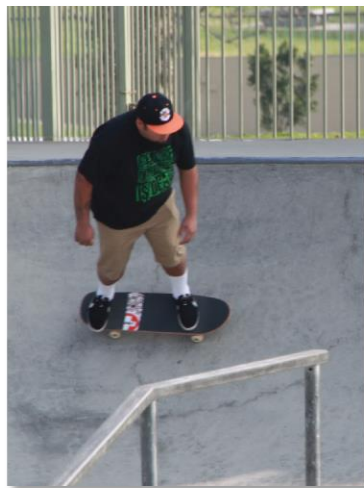


we all need  
**PARKS**  
for healthy, thriving and engaged communities

## Steering Committee Meeting #6 March 24, 2016

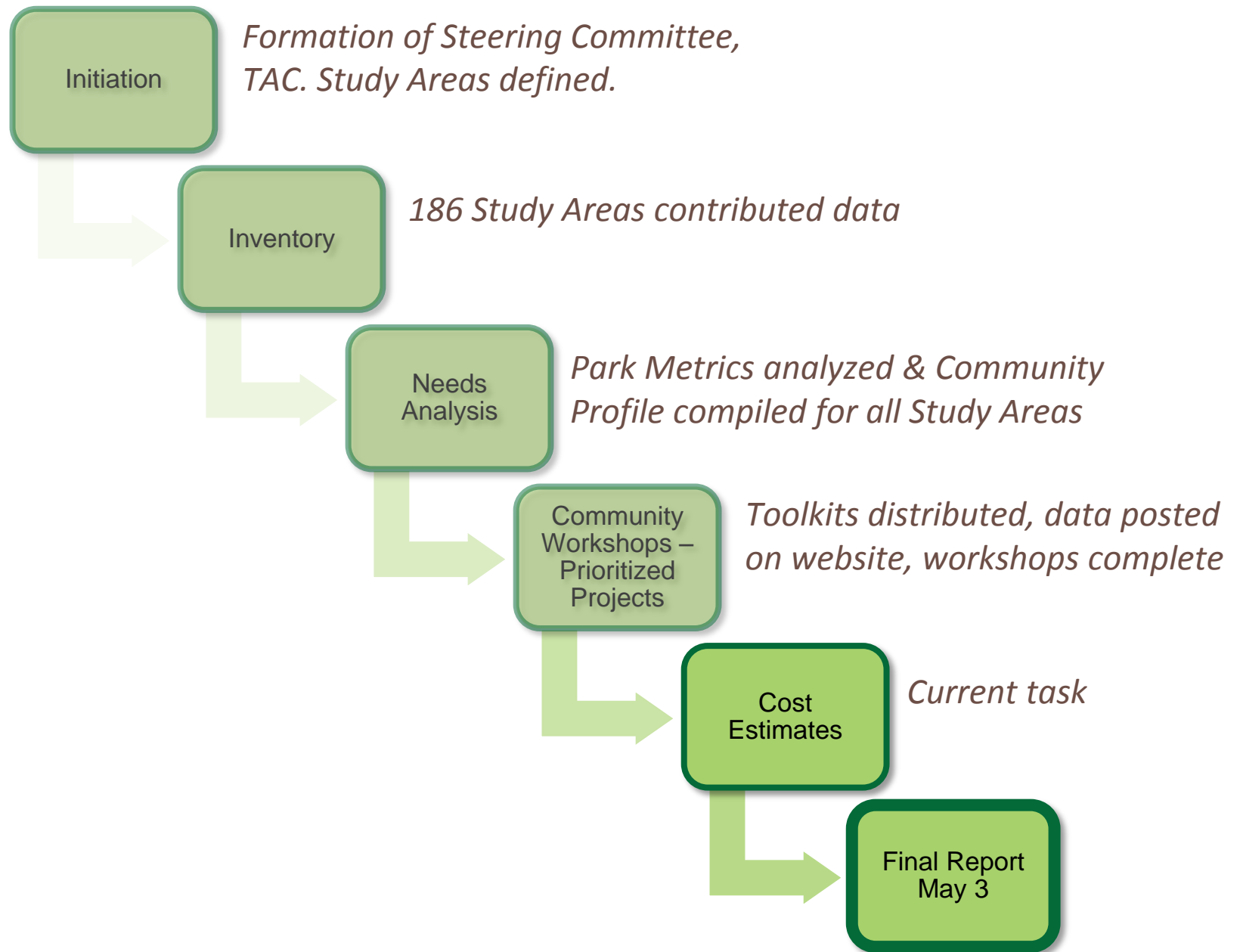


LOS ANGELES COUNTYWIDE COMPREHENSIVE PARK  
& RECREATION NEEDS ASSESSMENT

## ***Steering Committee Meeting #6***

- **Welcome and Project Updates**
- Community Engagement Summary
- Prioritized Projects & Cost Estimates
- Parks Needs Framework
- Final Report
- Next Steps

# Welcome and Project Updates



## ***Steering Committee Meeting #6***

- Welcome and Project Updates
- **Community Engagement Summary**
- Prioritized Projects & Cost Estimates
- Parks Needs Framework
- Final Report
- Next Steps

# Community Engagement Summary

Workshops for 177 Study Areas held between December 2015 and February 2016 (84 days)

- Busiest weekend was January 20th & 21<sup>st</sup> - 23 meetings held
- Most popular meeting start time was 7:00 PM
- Highest attendance was at City of LA Boyle Heights/NE LA South meeting – over 275 people signed in



# *Community Engagement Summary*

## ■ Countywide Awareness Efforts

- Health Equity Workshops
- Social Media
- Print Media
- High Priority Areas

## ■ Study Area Specific Efforts

- County
- Individual Cities



## COMMUNITY ENGAGEMENT SUMMARY

# Countywide Awareness Efforts

## Health Equity Workshops

- Information aimed at community organizations who could spread awareness among their constituents
- 3 workshops attended by over 200 people in November, 2015
- Webinar was sent to homeowners groups, individual cities, community organizations



### MAKE YOUR VOICE HEARD

**Take Action On Parks and Health Equity**

Study after study has shown that access to well-maintained parks increases physical activity among both children and adults, and that parks are essential to safe, thriving communities.

LA County has an urgent need for more parks and recreational facilities in our underserved park-poor communities. It's a vital health issue for these communities where obesity, diabetes, hypertension and heart disease are increasing at alarming rates.

Come to a Stakeholder Workshop that will help define the role of parks in building healthy, thriving and engaged neighborhoods. Learn more about how the County and 88 cities are taking stock of our parks, recreational facilities and open space—and what kind of shape they're in.

Get informed about how your community can make an impact and take part in the 200 park assessment community meetings starting in December.

This is a once-in-a-generation chance to shape the priorities for how and where park funding will go for the next several decades.

**Let us know which workshop you're attending and we'll save a seat for you:**  
[ParksInfo@migcom.com](mailto:ParksInfo@migcom.com)

**Sponsored by:**





### COME TO A STAKEHOLDER WORKSHOP!

**November 3, 10am-12pm**  
El Monte Senior Center  
3120 N. Tyler Ave, El Monte

**November 9, 10am-12pm**  
Bateman Hall Auditorium  
11330 Bullis Rd, Lynwood

**November 13, 10am-12pm**  
Roy A. Anderson Recreation Center, Comrie Hall  
3980 Bill Robertson Lane, Los Angeles

LOS ANGELES COUNTYWIDE COMPREHENSIVE PARK & RECREATION NEEDS ASSESSMENT  
[LACountyParkNeeds.org](http://LACountyParkNeeds.org)

## COMMUNITY ENGAGEMENT SUMMARY

# Countywide Awareness Efforts

## Facebook Advertisements

- 1,113,439 people reached
- 20,000 people clicked on ad to get to [www.lacountyparkneeds.org](http://www.lacountyparkneeds.org)
- 3,600 then clicked on the map to find a meeting location
- Received 3,693 post “likes”
- Received 450 post shares
- Received 445 comments





## COMMUNITY ENGAGEMENT SUMMARY

# Countywide Awareness Efforts

## Digital and Print Media

- 30 individual articles
- Combined circulation of 1,160,531
- Interview with Rita Robinson, Project Director aired on KPCC/Southern California Public Radio

Glendale  
**News-Press**

**LONG BEACH POST**

**HomeTown**  
NEWS

**Bell Gardens Sun**  
A Free and Independent Press Preserves the People's "Right to Know"  
FOUNDED IN 1995  
VOLUME 17: NUMBER 46

**Daily News**  
DailyNews.com

**sgvtribune.com**  
SAN GABRIEL VALLEY

**Press-Telegram**

**Pasadena Star-News**  
PASADENA, CA

EL MONTE  
**Examiner**

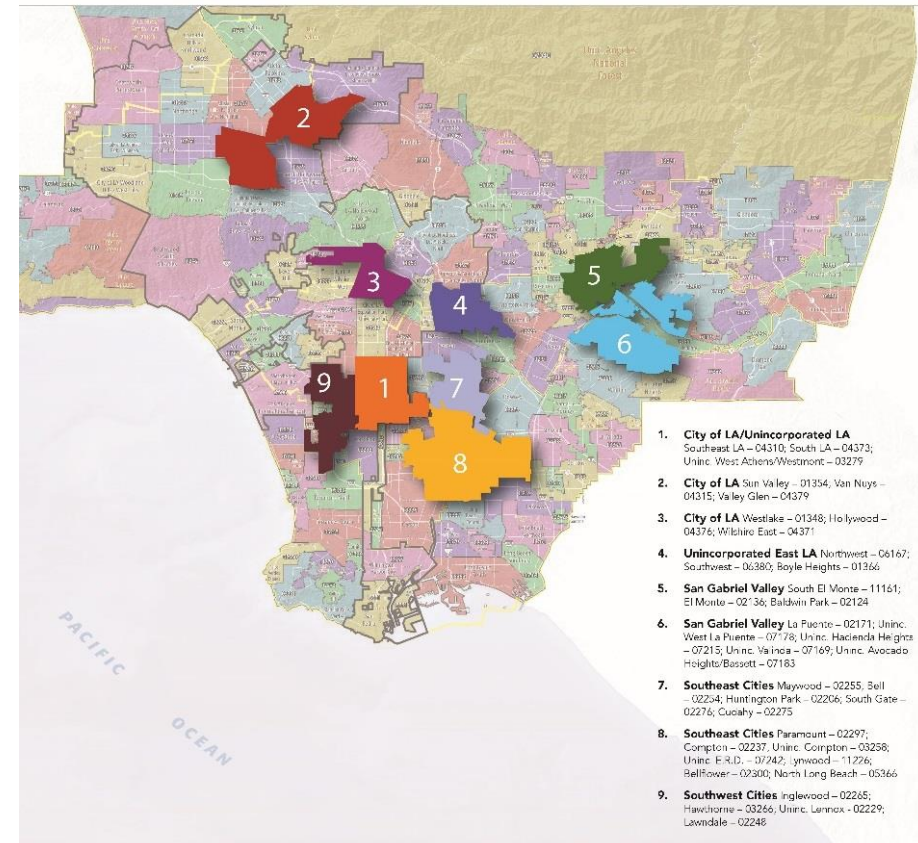
Los Angeles  
**WAVE**  
100 YEARS

## COMMUNITY ENGAGEMENT SUMMARY

# Countywide Awareness Efforts

## High Priority Areas

- Nine geographic areas received extra awareness efforts
  - Community-based organizations worked with local officials and community leaders
  - Direct canvassing, including door hangers
  - Schools
  - Combined efforts reached over 150,000 people



## Study Area Specific Efforts - *Unincorporated Study Areas*

- Print and digital ads:
  - Los Angeles Times
  - La Opinión**
  - sgvtribune.com
- Facebook & Twitter ads and posts
  - More than 120,000 views
- Neighborhood canvassing
- Community events
- Partnering with town councils, community organizations, schools





## COMMUNITY ENGAGEMENT SUMMARY

### *Individual City Efforts*

- City websites
- Customized flyers and posters
- Announcements at events
- Partnering with schools and community organizations
- Raffles, refreshments



## COMMUNITY ENGAGEMENT SUMMARY

### *Meeting Showcase*

## Unincorporated La Habra Heights/ Rowland Heights

- 150 people attended
- Engagement Strategy:
  - Partnered with Rowland Heights Community Coordinating Council
  - Used EventBrite to invite residents
  - Sent flyers through school district
  - Emailed flyer and link to 500 person mailing list
  - Posted on electronic message board





## COMMUNITY ENGAGEMENT SUMMARY

### *Meeting Showcase*

#### City of El Monte

- 140 people attended meeting
- Strategy:
  - Large signage at Aquatic Center, Senior Center, Council Meetings, other events
  - Banners in parks and on City website
  - Article in City E-Newsletter
  - Flyers distributed through schools, Meals-on-Wheels, Chamber of Commerce



## COMMUNITY ENGAGEMENT SUMMARY

# Meeting Showcase

## City of Bell Gardens

- 65 people attended meeting
- Strategy:
  - Coordinated with program leaders to reach out to participants of all city programs
  - Posted on City website
  - Facebook and Instagram
  - Raffle
  - Refreshments



## ***Steering Committee Meeting #6***

- Community Engagement Summary
- **Prioritized Projects & Cost Estimates**
- Parks Needs Framework
- Final Report
- Next Steps



## Prioritized Projects

- Each meeting generated a list of 10 prioritized projects for the Study Area:
  - Participants reviewed Park Metrics for their Study Area, along with relevant Community Profile data
  - Participants helped generate a list of potential park projects
  - Participants prioritized 10 projects



## Prioritized Projects

- Nearly 4,000 projects in all were considered by meeting attendees
- 10 projects prioritized in each Study Area, for a total of nearly 1,800 prioritized projects countywide

The image displays three overlapping 'POTENTIAL PROJECT FORM' cards from the 'Let's all build PARKS' initiative. Each card contains the following fields:

- Type of Project:** (Check One) with options: REPAIR EXISTING AMENITY, ADD OR REPLACE AMENITY AT EXISTING PARK, and BUILD NEW PARK OR SPECIALTY FACILITY.
- Project Name:** A text box for the project name.
- Location:** A text box for the location.
- Project Description:** A text box for a detailed description.
- Place Stickers Here:** A large rectangular area for placing green dot stickers.
- TALLY:** A small box for the final count.

Handwritten entries on the forms include:

- Form 1 (top):** Project Name: Dance Room; Location: Poppy Park location; Description: Dance room with mirrors; TALLY: 42.
- Form 2 (middle):** Project Name: Soccer Complex; Location: All; TALLY: 25.
- Form 3 (bottom):** Project Name: Playground Equipment Replace; Location: Loma Vista Park; Description: remove old and install new playground equipment replacement; TALLY: 13.



# Prioritized Projects

## Preliminary analysis:

- 46% of the projects are to repair or replace existing amenities
  - 36% of “project points”
- 34% add new amenities to existing recreation facilities
  - 26% of “project points”
- 20% of the projects are related to constructing new parks and their amenities
  - 38% of “project points”





# *Prioritized Projects*

## Preliminary Analysis

- Projects to **repair** existing amenities
  - Infrastructure: 100 projects
  - Restrooms: 60 projects
  - Community Centers: 25 projects
  - Trails: 15 projects
  - Baseball fields: 10 projects





# *Prioritized Projects*

## Preliminary Analysis

- Projects to **replace** existing amenities:
  - Playgrounds: 60 projects
  - Infrastructure: 55 projects
  - Multi-purpose fields: 20 projects
  - Pools: 15 projects
  - Restrooms: 8 projects





# *Prioritized Projects*

## Preliminary Analysis

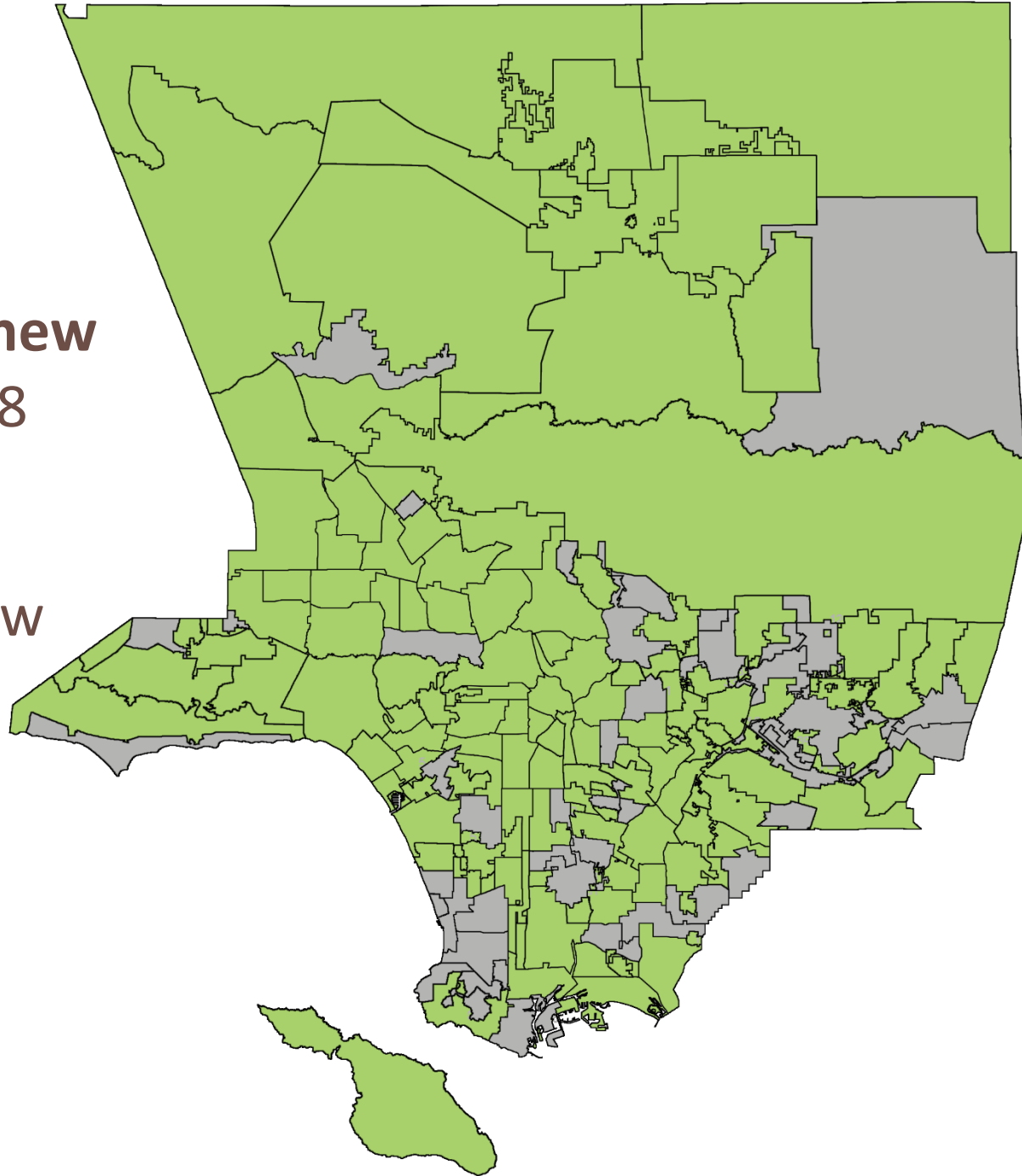
- Projects to **add new amenities** to existing parks:
  - Community Center: 80 projects
  - Trail/Walking Path: 75 projects
  - Dog Park: 60 projects
  - Playground: 60 projects
  - Fitness Zone: 50 projects



## *Prioritized Projects*

### Preliminary Analysis

- Projects to **construct new parks** prioritized in 138 Study Areas
- Approximately 200 new parks





## Cost Estimates

- Cost estimates being completed now for every prioritized project
- Costs used in calculations were reviewed by staff from:
  - County of Los Angeles Department of Parks and Recreation
  - County of Los Angeles Department of Public Works
  - City of Los Angeles Recreation & Parks - Planning, Construction and Maintenance
  - Third party cost estimating firm



## ***Steering Committee Meeting #6***

- Community Engagement Summary
- Prioritized Projects & Cost Estimates
- **Parks Needs Framework**
- Final Report
- Next Steps

# Parks Needs Framework

## Park Metrics Review

### 1. Park Land

*How many acres of park are there per 1,000 people?*

### 2. Park Access

*What percent of the population lives within ½ mile of a park?*

### 3. Park Pressure

*How much park land is available to residents in the area around each park?*

### 4. Park Amenities

*What amenities are available in each park?*

### 5. Park Condition

*Is the park in good, fair, or poor condition?*

# Parks Needs Framework

## Park Metrics Review

- Analysis of Park Metrics in each Study Area gives detailed information about park need *within* each Study Area





# Parks Needs Framework

## Park Metrics Review

Metrics with a spatial component were used to map **local** park need within each Study Area:

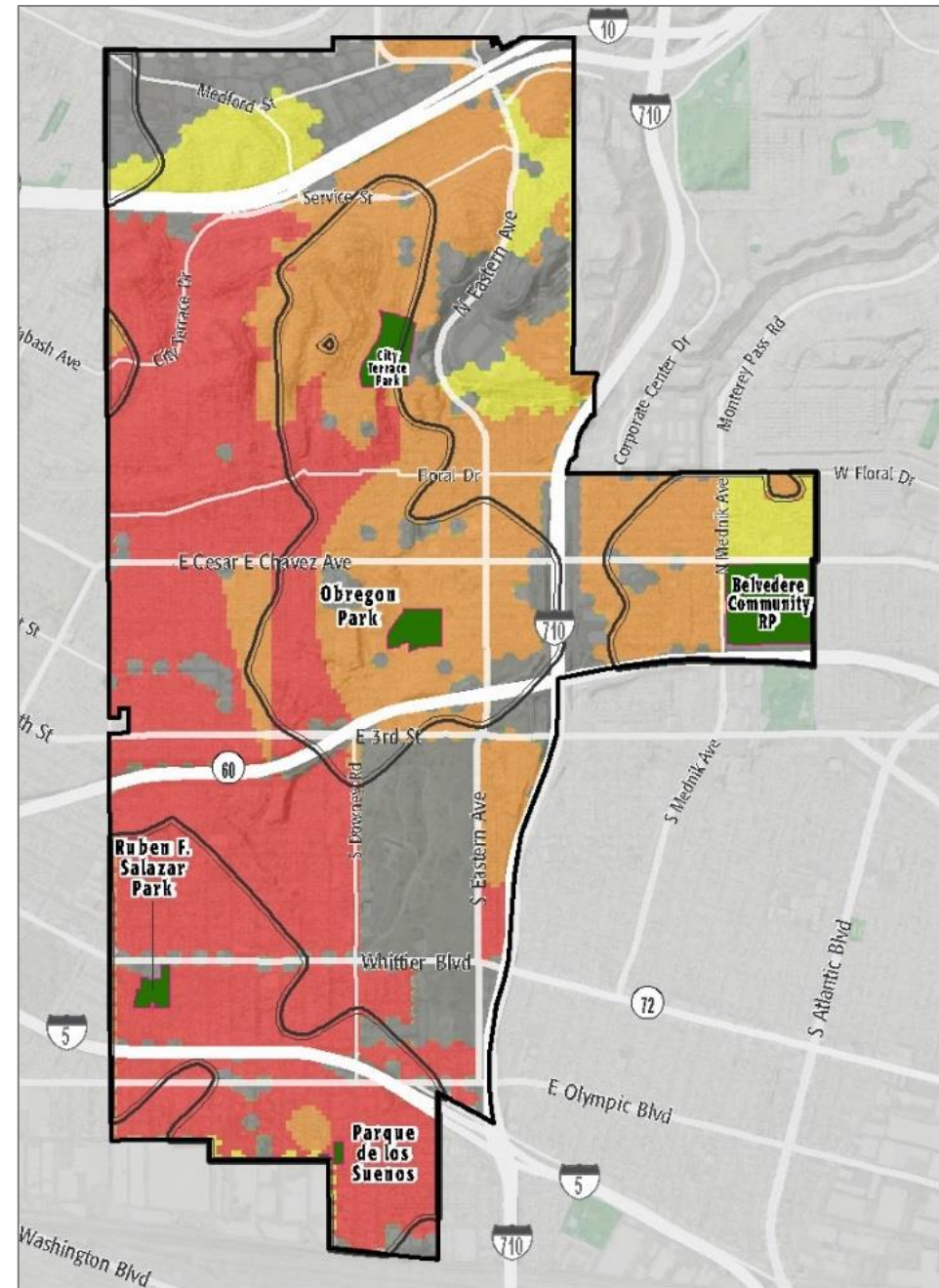
Acre Need  
(20%)

+

Distance  
(20%)

+

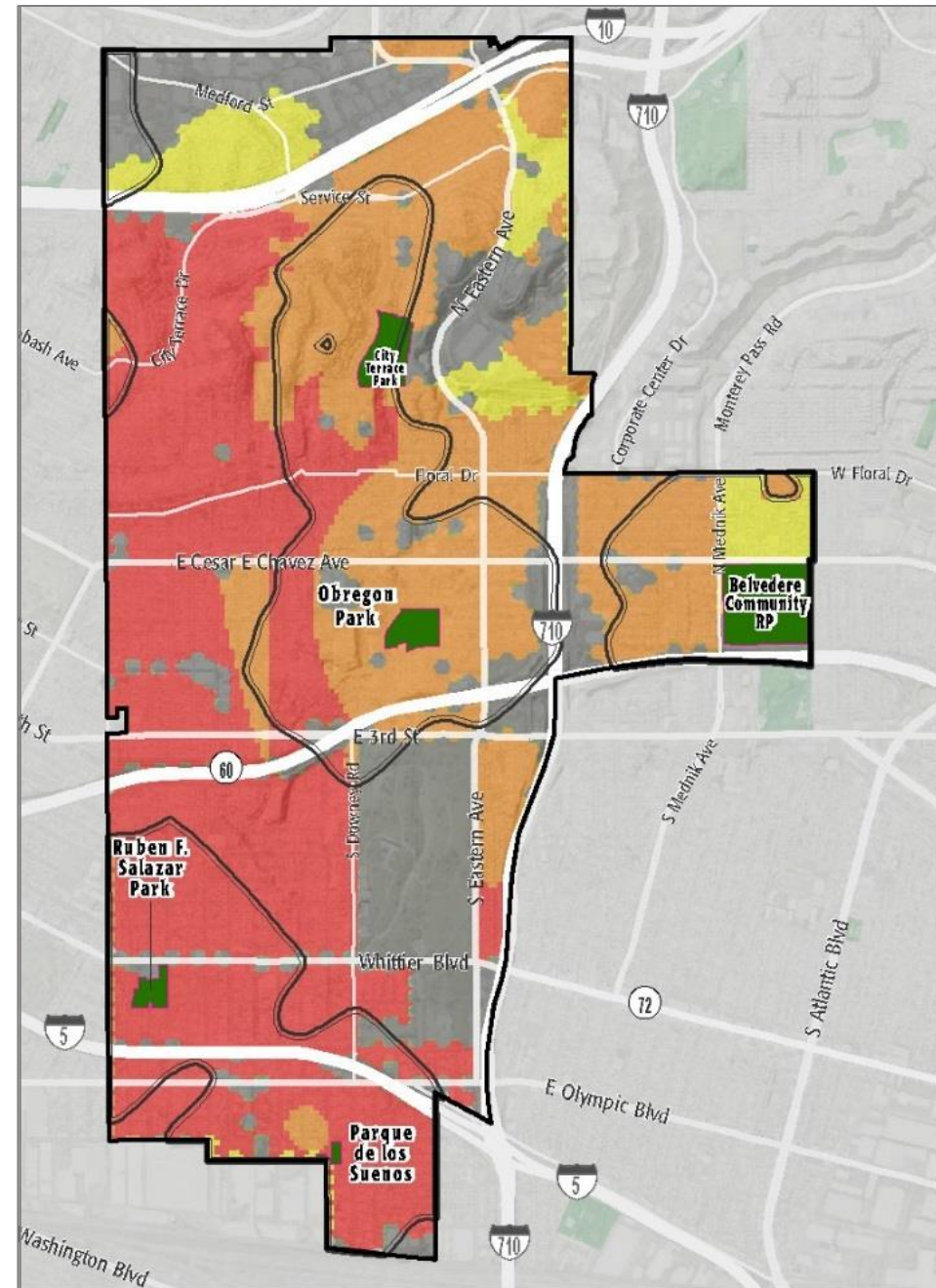
Population  
Density  
60%





## Park Needs Framework

- Park Needs Framework summarizes this analysis to determine a **countywide** park need level for each Study Area as a whole

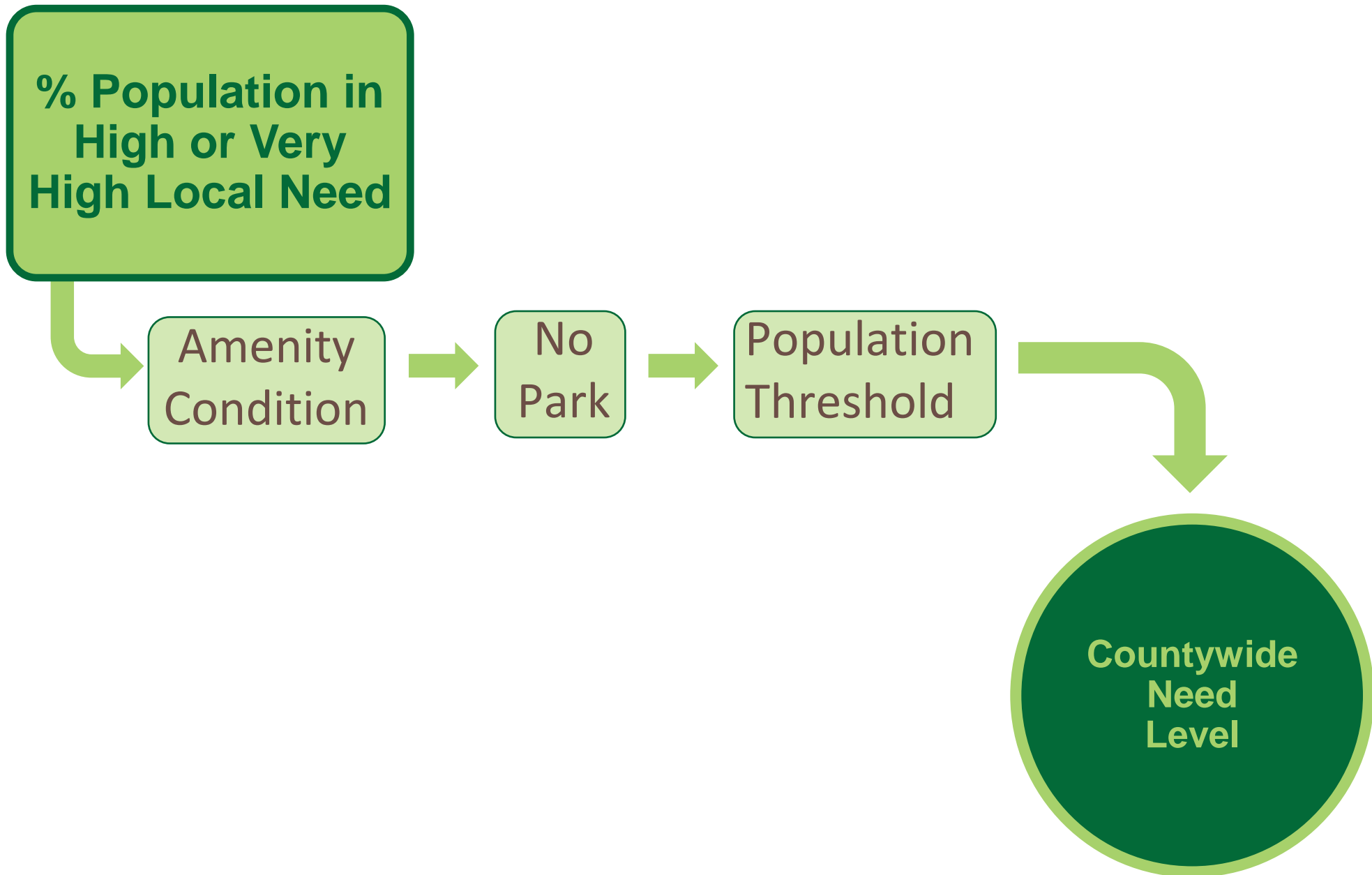


## *Park Needs Framework*

Framework methodology reviewed by a focus group composed of members of:

- County Department of Planning
- County Department of Public Health
- Technical Advisory Committee
- Steering Committee

## *Park Needs Framework*

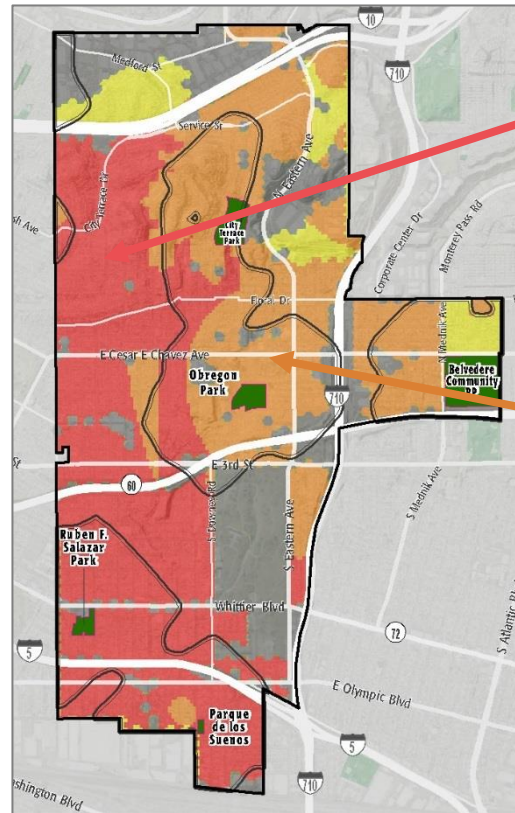




## Park Needs Framework

## % Population in High or Very High Local Need

The percent of the population in “Very High” and “High” local need was calculated in each Study Area



**60% of the Study Area's population live in Very High Need area (41,258 people )**



**34% of the Study Area's population live in High Need areas (23,656 people )**

2

**94% of the population in  
High or Very High Need areas**

Example  
Study Area:  
Unincorporated  
East Los Angeles  
Northwest

## Park Needs Framework

**% Population  
in High or  
Very High  
Need**

Each Study Area was assigned an Initial Need Category based on the percent of the population in “Very High” or “High” local need:

Initial Need Category	% pop. in “High” or “Very High” need
Very Low	0-1%
Low	1 – 23%
Moderate	23 – 50%
High	50 – 75%
Very High	75 – 100%

**94% of the population in  
High or Very High Need areas**

Unincorporated  
East Los Angeles Northwest

# Park Needs Framework

## Amenity Condition

- If 50% or more of the amenities in a Study Area are in “Poor” condition, the Study Area was moved up one need level
- 12 Study Areas moved

Park Name	Condition	General Infrastructure Condition	Open Lawn/ Turf Area	Amenities																	Total
				Tennis Courts	Basketball Courts	Baseball Fields	Soccer Fields	Multipurpose Fields	Fitness Zones	Skate Parks	Picnic Shelters	Playgrounds	Swimming Pools	Splash Pads	Dog Parks	Gymnasiums	Community/Rec Centers	Senior Centers	Restrooms		
Belvedere Community Regional Park	Good				2								3	1						6	
	Fair			2		3			1	1	4	1					1			13	
	Poor						2								1			2		5	
City Terrace Park	Good										1	2				1				4	
	Fair			1	1	2		1					1	1			1			8	
	Poor																	1		1	
Eugene A. Obregon Park	Good				1											1				2	
	Fair					2		2	1		1	2	1				1		1	11	
	Poor																			0	
Parque de los Suenos	Good																			0	
	Fair				1						1	3							1	6	
	Poor																			0	
Ruben F Salazar Park	Good			2								1							2	5	
	Fair				1	2			1		1		1			1	1	1		9	
	Poor																			0	
Totals:	Good			2	3	0	0	0	0	0	1	3	3	1	0	2	0	0	2	17	
	Fair			3	3	9	0	3	3	1	7	6	3	1	0	1	4	1	2	47	
	Poor			0	0	0	2	0	0	0	0	0	0	0	0	1	0	0	3	6	

In Unincorporated East Los Angeles Northwest, 8.5% of amenities are in “Poor” condition.

This Study Area was not moved up a need level

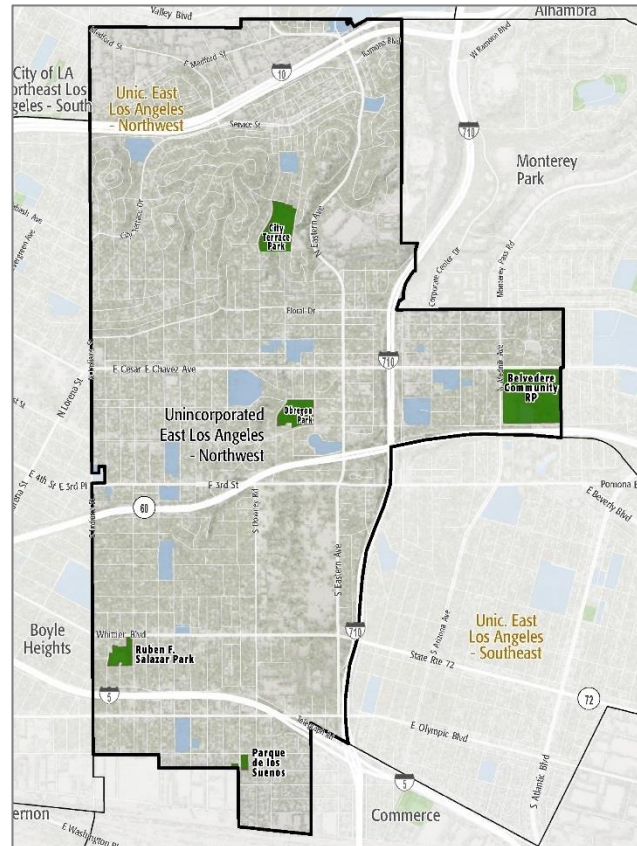
Data from Unincorporated East Los Angeles Northwest



# Park Needs Framework

No  
Park

- If there are no parks in a Study Area, the Study Area was moved up one need level
- 8 Study Areas moved



Unincorporated East Los Angeles Northwest has 5 parks.

This Study Area was not moved up a need level

## Park Needs Framework

### Population Threshold

- If population is less than 1,000:  
Need level  $\leq$  “Very Low” (2 Study Areas moved)
- If population is between 1,000 - 5,000:  
Need level  $\leq$  “Low” (No Study Areas moved)
- If population is between 5,000 - 10,000:  
Need level  $\leq$  “Moderate” (No Study Areas moved)



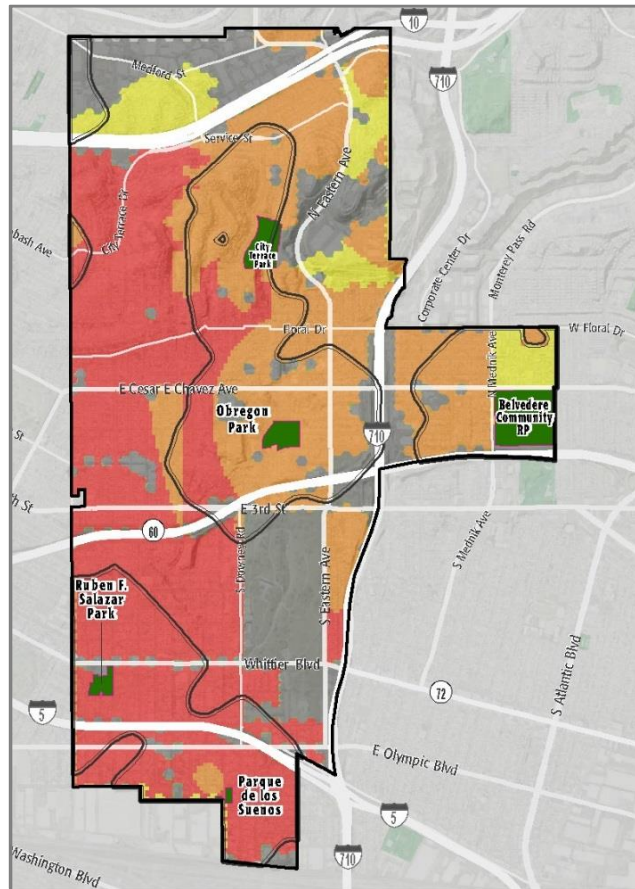
Unincorporated East  
Los Angeles Northwest's  
population is 68,998.

This Study Area was not  
moved up a need level

# Park Needs Framework

Countywide  
Need  
Level

- Final Countywide Need Level determined for each Study Area

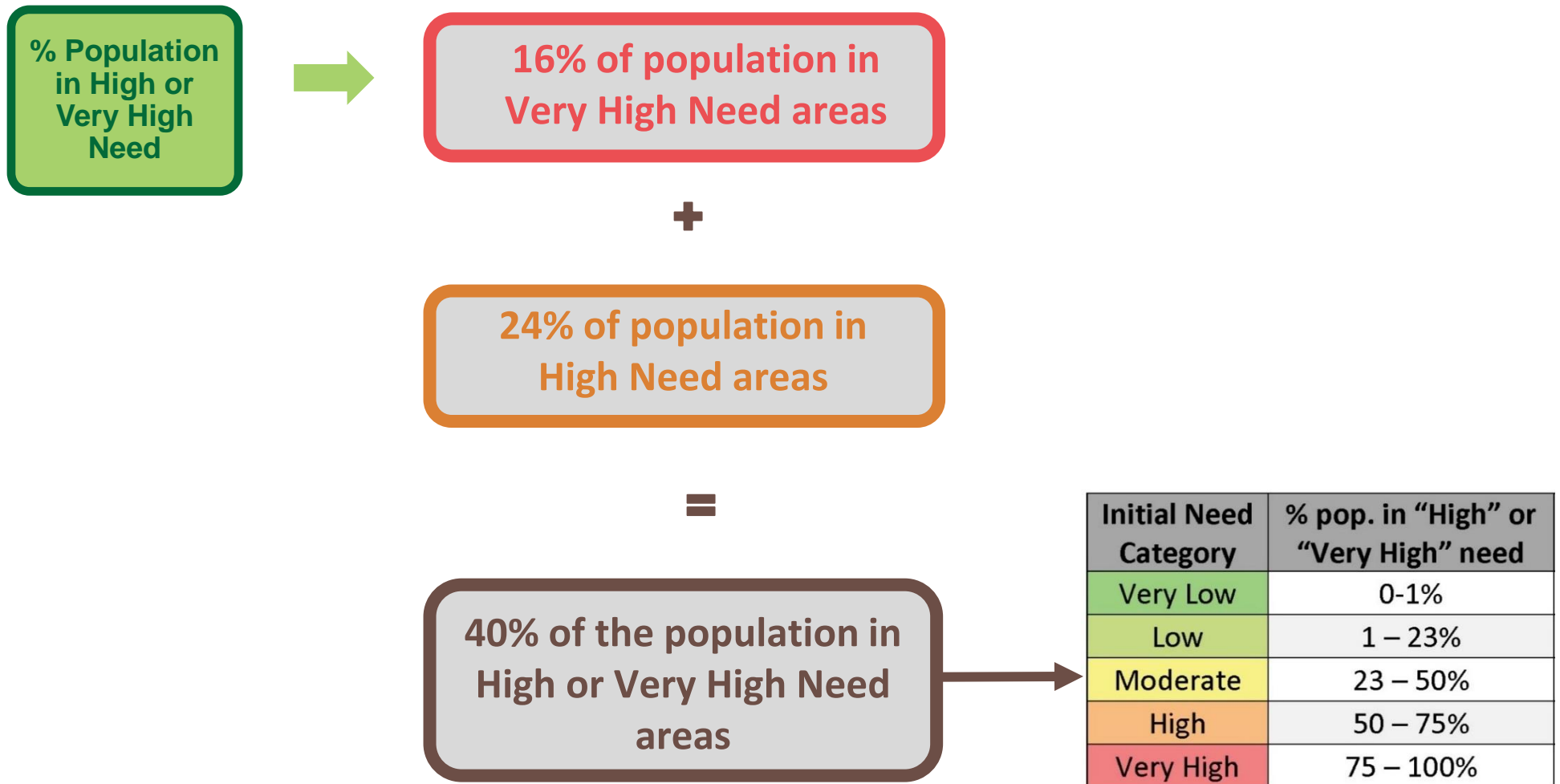


Unincorporated East  
Los Angeles  
Northwest's  
Countywide Need  
Level is **"Very High"**



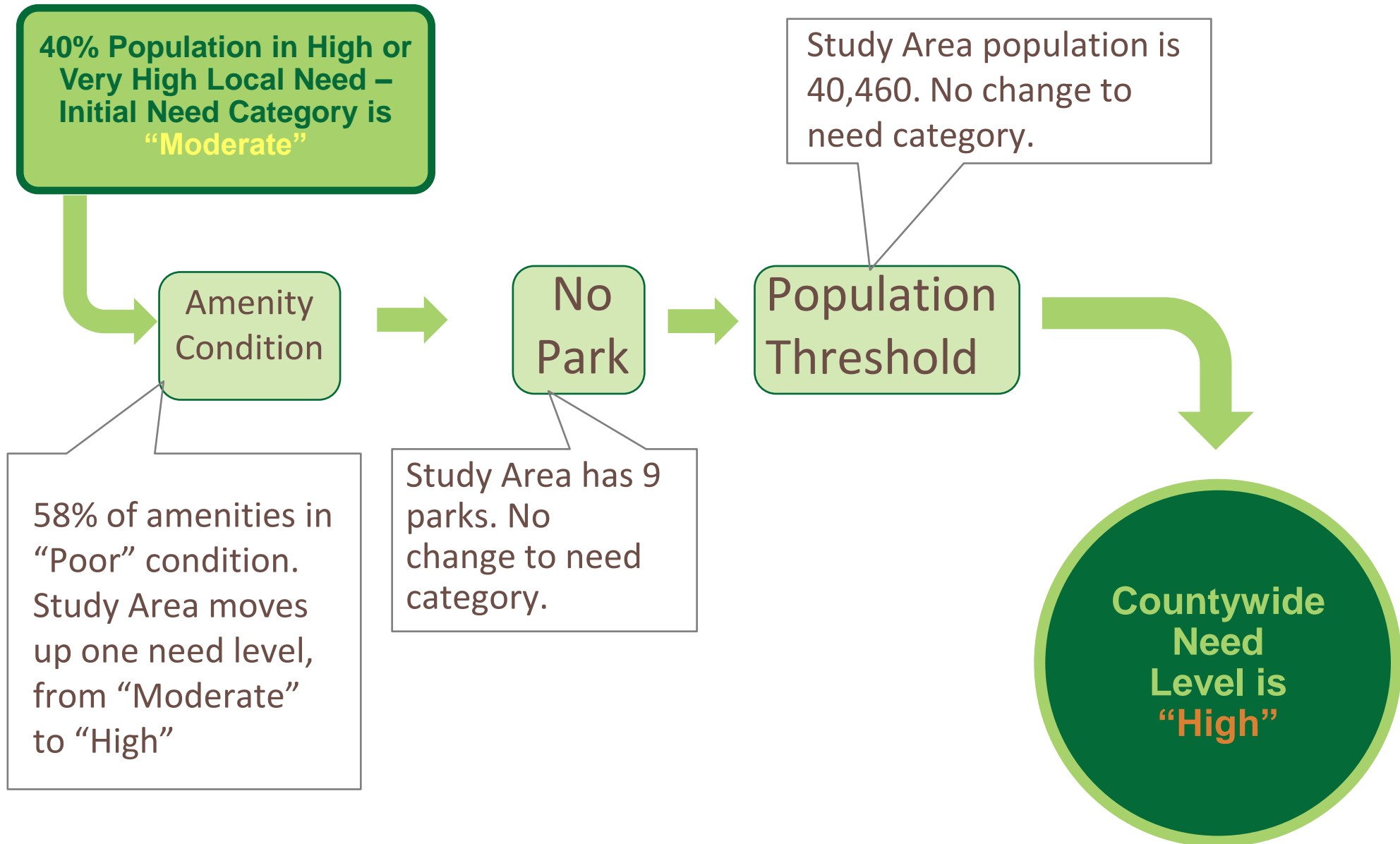
# Park Needs Framework

Additional Example: Unincorporated Willowbrook



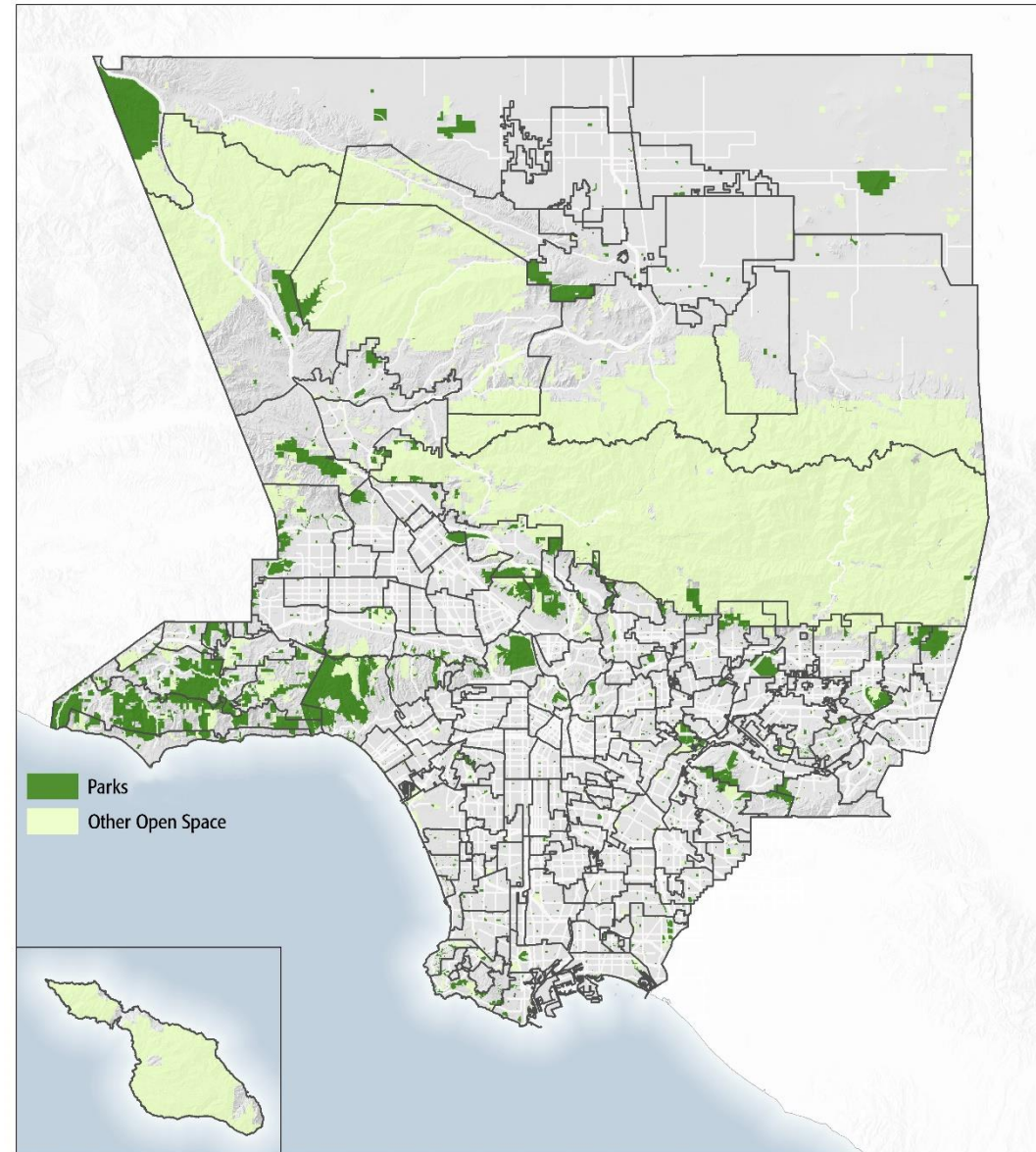
# Park Needs Framework

Additional Example: Unincorporated Willowbrook



# Park Needs Framework

- Very High and High need is found throughout the county





## ***Steering Committee Meeting #6***

- Community Engagement Summary
- Prioritized Projects & Cost Estimates
- Parks Needs Framework
- **Final Report**
- Next Steps

## ***Final Report***

Will be presented at May 3 Board of Supervisors Meeting and available to the public online

### ***Contents***

- Executive Summary
- Introduction
- Existing Assets & Conditions
- Park Need Framework
- Appendix
- Addendum

# *Final Report*

## **Introduction**

- Purpose of the Needs Assessment
- Who Was Involved
- Process



# ***Final Report***

## **Existing Assets & Conditions**

- Inventory Summary
- Park Metrics Summary
- Community Profile Summary
- Prioritized Projects Summary
- Cost Estimate Summary

# *Final Report*

## **Park Need Framework**

- Purpose
- Methodology
- Analysis
- Application

# *Final Report*

## **Appendix**

- Data by Study Area
  - Park Metrics
  - 10 prioritized projects with cost estimates



## ***Steering Committee Meeting #6***

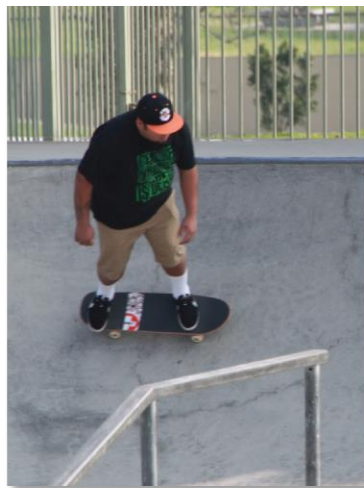
- Community Engagement Summary
- Prioritized Projects & Cost Estimates
- Parks Needs Framework
- Final Report
- **Next Steps**

## *Next Steps*

- May 3, 2016
  - Steering Committee Appreciation Breakfast at 7:30am
  - Final Presentation to Board of Supervisors begins at 9:00am
  - Final Report Available on [www.lacountyparkneeds.org](http://www.lacountyparkneeds.org)

we all need  
**PARKS**  
for healthy, thriving and engaged communities

## Steering Committee Meeting #6 March 24, 2016



LOS ANGELES COUNTYWIDE COMPREHENSIVE PARK  
& RECREATION NEEDS ASSESSMENT