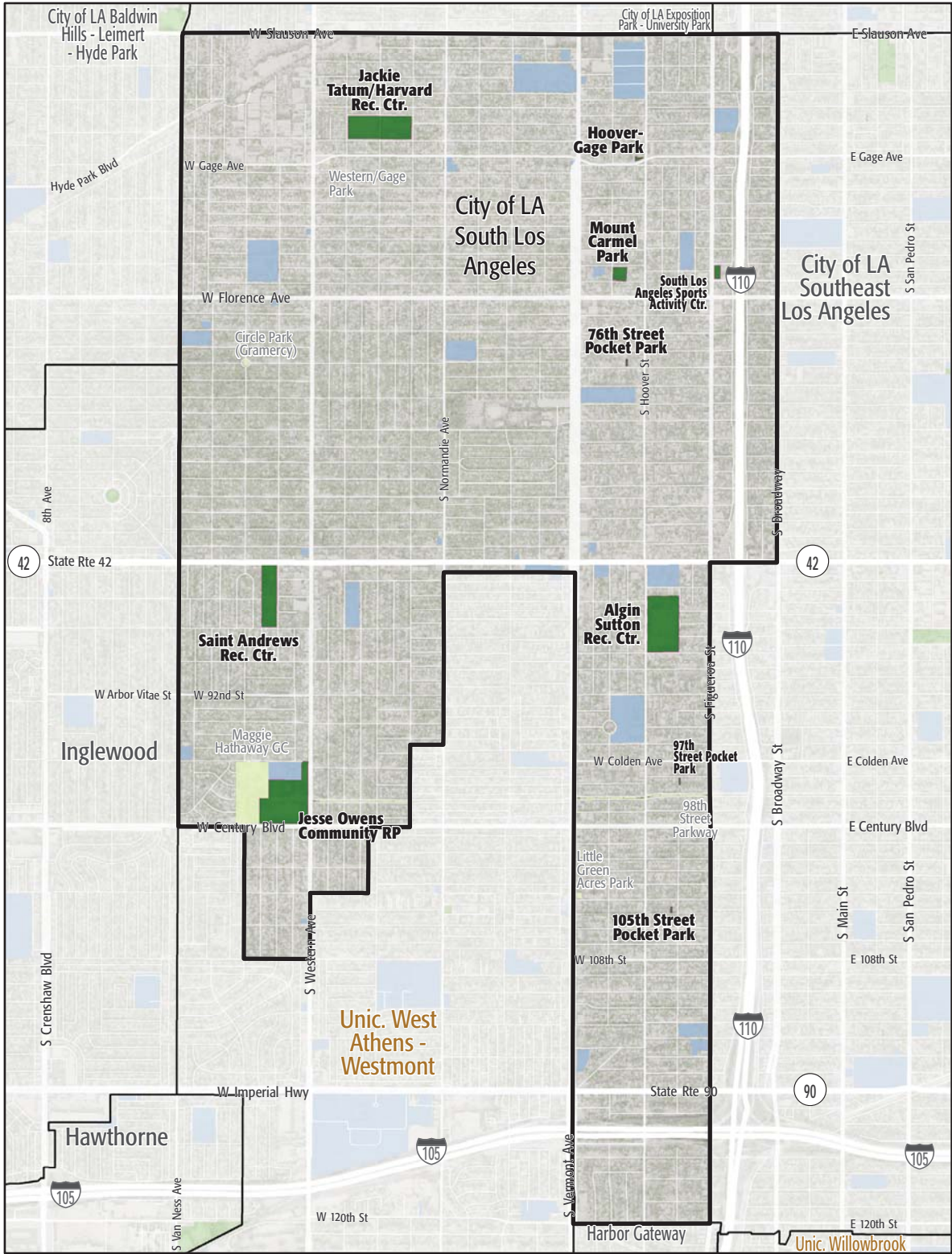


4. STUDY AREA BASE MAP



City of LA South Los Angeles

- Existing Park
- Existing Park Outside Study Area
- Existing School
- Other Open Space

6. PARK METRICS



PARK LAND: Is there enough park land for the population?

60.3 PARK ACRES
within study area

109,993
POPULATION

0.5 PARK ACRES
PER 1,000

The county average is 3.3 park acres per 1,000

PARK ACCESSIBILITY:
Is park land located where
everyone can access it?

59% of population living
WITHIN 1/2 MILE
of a park

The county average is 49% of the population living
within 1/2 mile of a park

PARK PRESSURE

How much park land is available to residents in the area around each park?

105th Street Pocket Park (0.11 Acres)
0.01 park acres per 1,000

76th Street Pocket Park (0.13 Acres)
0.01 park acres per 1,000

97th Street Pocket Park (0.13 Acres)
0.01 park acres per 1,000

Algin Sutton Rec. Center (16.45 Acres)
0.76 park acres per 1,000

Hoover-Gage Park (0.21 Acres)
0.02 park acres per 1,000

**Jackie Tatum/Harvard Recreation Center
(12.85 Acres)**
0.59 park acres per 1,000

**Jesse Owens Community Reg. Park (19.33
Acres)**
1.36 park acres per 1,000

Mount Carmel Park (1.69 Acres)
0.3 park acres per 1,000

Saint Andrews Rec. Center (8.62 Acres)
0.77 park acres per 1,000

**South Los Angeles Sports Activity Center
(0.74 Acres)**
0.08 park acres per 1,000

WHERE ARE PARKS MOST NEEDED?

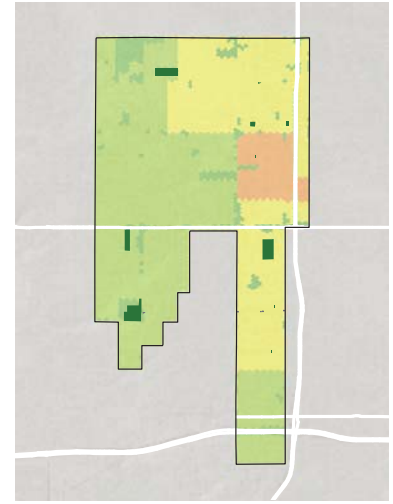
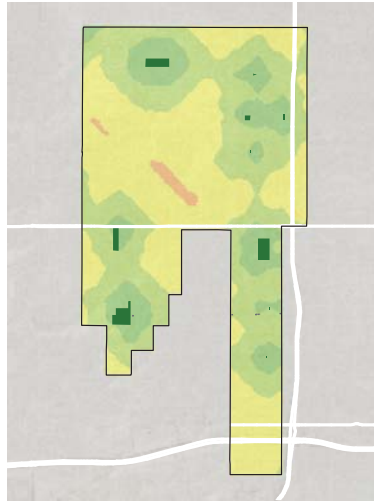
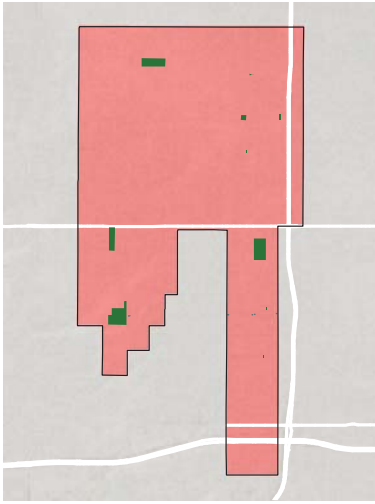
PARK ACRE NEED

+

DISTANCE TO PARKS

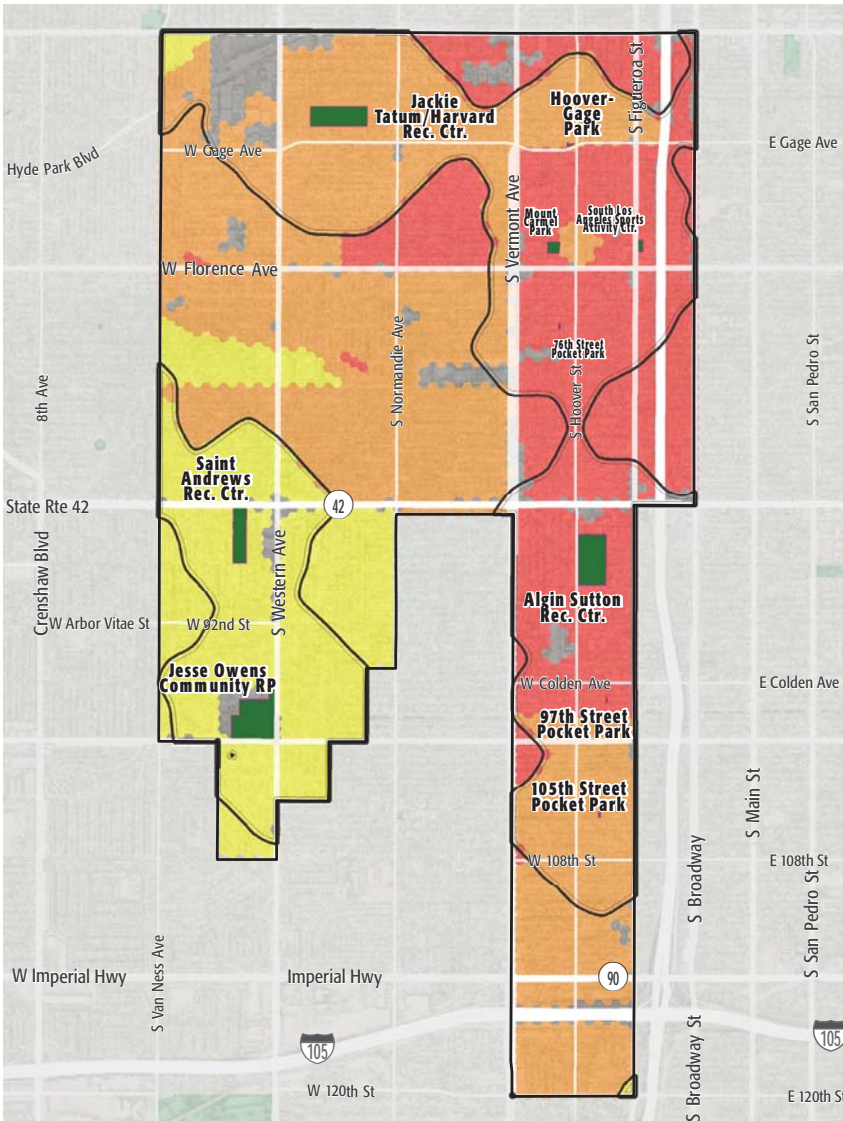
+

POPULATION DENSITY



= PARK NEED

*Calculated using the following weighting: (20% x Park Acre Need) + (20% x Distance to Parks) + (60% x Population Density)



PARK NEED CATEGORY

- Very High
- High
- Moderate
- Low
- Very Low
- No Population
- Area within 1/2 mile walk of a park

HOW MANY PEOPLE NEED PARKS?

