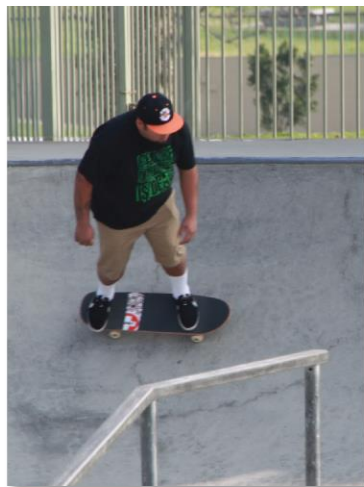


we all need  
**PARKS**  
for healthy, thriving and engaged communities

## Steering Committee Meeting #5 October 29, 2015



LOS ANGELES COUNTYWIDE COMPREHENSIVE  
PARK & RECREATION NEEDS ASSESSMENT

# Steering Committee Meeting #5

- Welcome and Project Updates
- Regional Approach
- Existing Conditions Analysis







# Welcome and Project Updates



# Welcome and Project Updates



- Study Area Community Engagement Plans
- Education and Outreach Update
- Website Update
- Parking Lot

## WELCOME AND PROJECT UPDATES

# Community Engagement Plans

- 125 meetings scheduled
- 7 cities have declined to participate in community engagement phase
  - La Habra Heights
  - Industry
  - Irwindale
  - Lakewood
  - Manhattan Beach
  - Palos Verdes Estates
  - Rolling Hills Estates

Study Area: 2225

  
**Community Engagement Plan**

A Community Engagement Meeting must be held in each Study Area between December 1, 2015 and February 15, 2016. The meeting can be run by city staff or by a community-based organization of your choice. The meeting facilitator must attend one of three trainings. At the training, facilitators will receive all information needed to hold the meeting. To offset the cost of the Community Engagement Meeting, a \$2,500 stipend is available for each Study Area.

Please answer the questions below and return this form to Rita Robinson  
[robinson@parks.lacounty.gov](mailto:robinson@parks.lacounty.gov) by **October 15, 2015**

Please tell us about your community engagement meeting:  
Date:  
Time:  
Location:

☐ Parking provided  
☐ Accessible by public transportation

What translation services (if any) will be provided? Languages:

Who will be facilitating your community engagement event(s)?  
☐ City Staff  
☐ Community-Based Organization. Name of CBO:

Please provide the contact information for the primary facilitator **and** any secondary facilitator (if applicable) that will be attending the mandatory training. You may have a **maximum** of 2 people.

Name:	Name:
Title:	Title:
Address:	Address:
Phone:	Phone:
Email:	Email:

Please rank your preference for a mandatory facilitator training date. Space is limited at each training and spaces will be reserved based on the timely return of this form.

1	Monday--November 16, 2015	10:00am-12:00pm	Roy Anderson Recreation Center
2	Tuesday--November 17, 2015	6:30pm-8:30pm	Los Angeles County Arboretum
3	Saturday--November 21, 2015	10:00am-12:00pm	San Fernando Park

Please describe how you will promote your engagement meeting (select all that apply):

<input type="checkbox"/> Publicly posted notice	<input type="checkbox"/> Canvassing
<input type="checkbox"/> Mailers	<input type="checkbox"/> Television/Radio
<input type="checkbox"/> Website	<input type="checkbox"/> Other
<input type="checkbox"/> Social Media	

Please describe your attendance goal (# of attendees):



Please provide any additional details related to your action plan for engaging the community:

The list of prioritized parks projects generated at the community engagement meeting is due to the County by **February 29, 2016**.

# Community Engagement Plans

## ■ 17 cities have not yet submitted Community Engagement Plans:

- Alhambra, Baldwin Park, Beverly Hills, Cudahy, Culver City, Diamond Bar, La Canada Flintridge, La Puente, La Verne, Lawndale, Lynwood, Maywood, Pomona, Rosemead, South El Monte, Vernon, West Hollywood, Walnut

Study Area: 2225

**Community Engagement Plan**

A Community Engagement Meeting must be held in each Study Area between December 1, 2015 and February 15, 2016. The meeting can be run by city staff or by a community-based organization of your choice. The meeting facilitator must attend one of three trainings. At the training, facilitators will receive all information needed to hold the meeting. To offset the cost of the Community Engagement Meeting, a \$2,500 stipend is available for each Study Area.

Please answer the questions below and return this form to Rita Robinson  
[robinson@parks.lacounty.gov](mailto:robinson@parks.lacounty.gov) by **October 15, 2015**

Please tell us about your community engagement meeting:  
Date:  
Time:  
Location:

☐ Parking provided  
☐ Accessible by public transportation  
What translation services (if any) will be provided? Languages:  
Who will be facilitating your community engagement event(s)?  
☐ City Staff  
☐ Community-Based Organization. Name of CBO:

Please provide the contact information for the primary facilitator **and** any secondary facilitator (if applicable) that will be attending the mandatory training. You may have a **maximum** of 2 people.

Name:	Name:
Title:	Title:
Address:	Address:
Phone:	Phone:
Email:	Email:

Please rank your preference for a mandatory facilitator training date. Space is limited at each training and spaces will be reserved based on the timely return of this form.

1	Monday--November 16, 2015	10:00am-12:00pm	Roy Anderson Recreation Center
2	Tuesday--November 17, 2015	6:30pm-8:30pm	Los Angeles County Arboretum
3	Saturday--November 21, 2015	10:00am-12:00pm	San Fernando Park

Please describe how you will promote your engagement meeting (select all that apply):

<input type="checkbox"/> Publicly posted notice	<input type="checkbox"/> Canvassing
<input type="checkbox"/> Mailers	<input type="checkbox"/> Television/Radio
<input type="checkbox"/> Website	<input type="checkbox"/> Other
<input type="checkbox"/> Social Media	

Please describe your attendance goal (# of attendees):  
Please provide any additional details related to your action plan for engaging the community:

The list of prioritized parks projects generated at the community engagement meeting is due to the County by **February 29, 2016**.

# Community Engagement Plans

## Facilitator Trainings

- Monday, November 16<sup>th</sup>  
10am-12pm  
Roy A. Anderson Rec. Center  
Los Angeles
- Tuesday, November 17<sup>th</sup>  
6:30-8:30pm  
LA County Arboretum  
Arcadia
- Thursday, November 18<sup>th</sup>  
10am-12pm  
San Fernando Pool Facility  
San Fernando





# Education and Outreach

## Health Equity Workshops:

- Tuesday, November 3rd  
10am-12pm  
El Monte Senior Center  
El Monte
- Monday, November 9th  
10am-12pm  
Bateman Hall Auditorium  
Lynwood
- Friday, November 13<sup>th</sup>  
10am-12pm  
Roy A. Anderson Rec Center  
Los Angeles

**we all need PARKS**  
for healthy, thriving and engaged communities

**MAKE YOUR VOICE HEARD**  
**Take Action On Parks and Health Equity**

Study after study has shown that access to well-maintained parks increases physical activity among both children and adults, and that parks are essential to safe, thriving communities.

LA County has an urgent need for more parks and recreational facilities in our underserved park-poor communities. It's a vital health issue for these communities where obesity, diabetes, hypertension and heart disease are increasing at alarming rates.

Come to a Stakeholder Workshop that will help define the role of parks in building healthy, thriving and engaged neighborhoods. Learn more about how the County and 88 cities are taking stock of our parks, recreational facilities and open space—and what kind of shape they're in.

Get informed about how your community can make an impact and take part in the 200 park assessment community meetings starting in December.

This is a once-in-a-generation chance to shape the priorities for how and where park funding will go for the next several decades.

Let us know which workshop you're attending and we'll save a seat for you:  
[ParksInfo@migcom.com](mailto:ParksInfo@migcom.com)

**Sponsored by:**

Los Angeles County Department of Public Health, Prevention Institute, Los Angeles Neighborhood Land Trust, National Center for Disease Prevention and Control, CHC, Community Intelligence, East LA Community Corporation, Esperanza, first 5LA, INVESTING IN PLACE, KAISER PERMANENTE, laane, LATINO CHURCH, Liberty Hill, Mayor de la Torre, Mayor of the County, NRDC, Poalima Reunited, PolicyLink, Los Angeles Countywide Comprehensive Park & Recreation Needs Assessment, THE CALIFORNIA ENDOWMENT, The Nature Conservancy, TRUST FOR PUBLIC LAND, United Parks Foundation.

**COME TO A STAKEHOLDER WORKSHOP!**

**November 3, 10am-12pm**  
El Monte Senior Center  
3120 N. Tyler Ave, El Monte

**November 9, 10am-12pm**  
Bateman Hall Auditorium  
11330 Bullis Rd, Lynwood

**November 13, 10am-12pm**  
Roy A. Anderson Recreation Center, Comrie Hall  
3980 Bill Robertson Lane, Los Angeles

LOS ANGELES COUNTYWIDE COMPREHENSIVE PARK & RECREATION NEEDS ASSESSMENT  
[LAParkNeeds.org](http://LAParkNeeds.org)

**PARTICIPE EN UNO DE LOS TALLERES DE LOS INTERESADOS!**

**viembre, 10am-12pm**  
Senior Center  
Tyler Ave, El Monte

**viembre, 10am-12pm**  
Hall Auditorium  
s Rd, Lynwood

**viembre, 10am-12pm**  
on Recreation  
Hall  
son Lane,

AS NECESIDADES  
EN TODO EL



## WELCOME AND PROJECT UPDATES

# Education and Outreach

## Areas of Focus & Organizations Involved

- Southeast LA, South LA, West Athens/Westmont  
*LA Neighborhood Land Trust*
- Sun Valley, Valley Glen, Van Nuys  
*Pacoima Beautiful*
- Westlake, Hollywood, Wilshire East  
*Korean Youth and Community Center*
- Unincorporated East LA, Boyle Heights  
*LA Neighborhood Land Trust*
- South El Monte, El Monte, Baldwin Park  
*Bike San Gabriel Valley*



## WELCOME AND PROJECT UPDATES

# Education and Outreach

## Areas of Focus & Organizations Involved

- La Puente, Unincorporated: West La Puente, Hacienda Heights, Valinda, Avocado Heights/Bassett  
*Bike San Gabriel Valley*
- Maywood, Bell, Huntington Park, South Gate, Cudahy  
*Mujeres de la Tierra*
- Paramount, Compton, Unincorporated Compton, Unincorporated East Rancho Dominguez  
*William C. Velasquez Institute*
- Inglewood, Hawthorne, Unincorporated Lennox, Lawndale  
*Lot to Spot*





## WELCOME AND PROJECT UPDATES

# Education and Outreach

- Social Media Campaign
  - Facebook and Twitter
  - Adults and teenagers countywide
  - Launching now



# Website Update

- Oriented to general public
- Currently advertises Health Equity Workshops
- Will have clickable map/address entry feature for finding community meeting information

The screenshot displays the website's layout. At the top, a green banner reads "we all need PARKS" with the tagline "for healthy, thriving and engaged communities". Below this, the main header states "LOS ANGELES COUNTYWIDE COMPREHENSIVE PARKS & RECREATION NEEDS ASSESSMENT" and identifies the "LOS ANGELES COUNTY DEPARTMENT OF PARKS AND RECREATION". A vertical navigation menu on the left includes links for HOME, RESOURCES, STEERING COMMITTEE, TECHNICAL ADVISORY COMMITTEE, and CONTACT US. A search bar and a "Search" button are located below the menu. A "Get Adobe Acrobat Reader" icon is also present. The main content area features a large photo of a baseball field. Below the photo, the heading "WE ALL NEED PARKS!" is followed by a paragraph about the benefits of parks. A section titled "COME TO A PARKS AND HEALTH EQUITY WORKSHOP" lists three dates and locations: November 3, 10AM-12PM at El Monte Senior Center; November 9, 10AM-12PM at Bateman Hall Auditorium; and November 13, 10AM-12PM at Roy A. Anderson Recreation Center. A green box at the bottom of the main content area states: "CHECK BACK FOR INFORMATION ABOUT 200 COMMUNITY WORKSHOPS OCCURRING THROUGHOUT THE COUNTY BETWEEN DECEMBER 2015 AND FEBRUARY 2016." The right sidebar contains a "JOIN OUR NEWSLETTER" section with an email input field and a "Subscribe" button, and a "RESOURCES" section with a thumbnail image of a document titled "PARKS WHAT IS YOUR PARKS NEEDS ASSESSMENT?".



# Parking Lot

- Census Undercount
- Homeless
- Gang Violence
- Park Safety
- Rivers
- Green Infrastructure
- Crosswalk/Sidewalk Condition
- Climate adaptation
- Water
- Sustainability
- Criteria for Funding



# Regional Approach



# Regional Approach

- Regional Needs for Sustainability within Park and Recreation Facilities
- Needs of Regional Facilities



## REGIONAL APPROACH

# Regional Need for Sustainability

- Final Park Needs Assessment report will recommend that future park and recreation projects constructed with public funds adhere to established sustainability best management practices, especially in the following areas:
  - Green Infrastructure
  - Water Conservation
  - Climate Adaptation
  - Connectivity and Trails





## REGIONAL APPROACH

# Needs of Regional Facilities

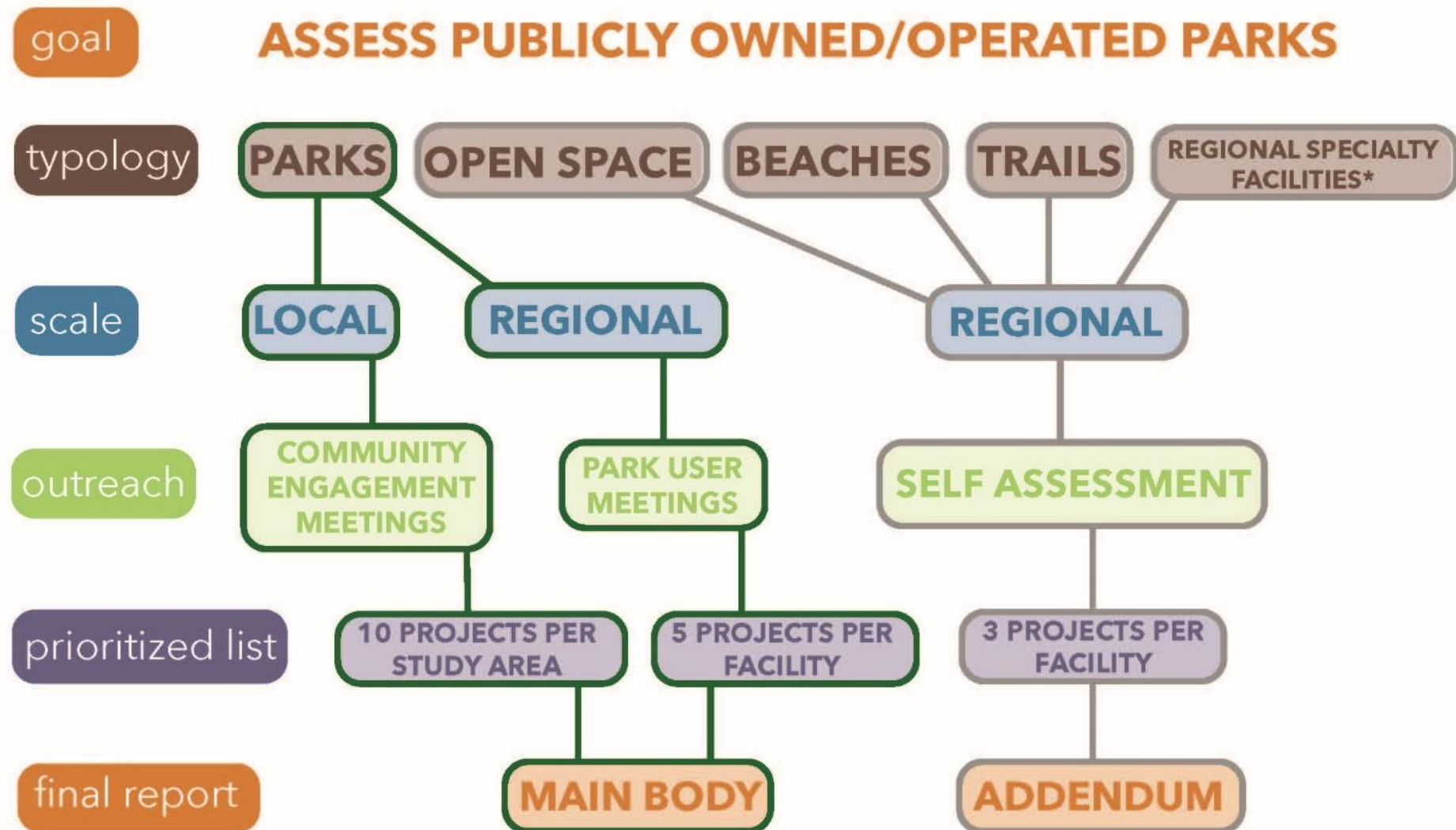
## Regional Recreational Facilities:

- Owned/managed by a local public agency
- Subject to the Park Preservation Act
- At least 100 acres in size
- At least three amenity types beyond trails, restrooms, and picnic shelters



Image courtesy of LA County Dept. of Parks & Recreation

# Needs of Regional Facilities



\*WITHIN A PARK

## Needs of Regional Facilities

### Regional Recreational Facilities:

1. Castaic Lake (County of Los Angeles)
2. Central Park (City of Santa Clarita)
3. El Dorado Regional Park, *East and West* (Long Beach)
4. Elysian Park (City of Los Angeles)
5. Ernest E. Debs Regional Park (City of Los Angeles)
6. Frank Bonelli Regional Park (County of Los Angeles)
7. Griffith Park (City of Los Angeles)
8. Hahamongna Watershed Park (City of Pasadena)
9. Hansen Dam Park (Los Angeles)
10. Heartwell Park (City of Long Beach)



## Needs of Regional Facilities

### Regional Recreational Facilities:

11. Ken Malloy Harbor Regional Park (City of Los Angeles)
12. Kenneth Hahn State Recreation Area (County of Los Angeles)
13. Lake Balboa Park (City of Los Angeles)
14. Peter F. Schabarum Regional County Park (County of Los Angeles)
15. San Dimas Canyon Community Regional Park (County of Los Angeles)
16. Santa Fe Dam Regional Park (County of Los Angeles)
17. Sepulveda Basin Recreation Area (City of Los Angeles)
18. Whittier Narrows Recreation Area (County of Los Angeles)
19. Woodley Avenue Park (City of Los Angeles)

## Needs of Regional Facilities

### Regional Recreational Facilities - Assessment of Need

- Optional park-user meeting for each Regional Recreational Facility (as per operating agency decision)
- Agency can report up to 5 prioritized projects per facility
- If a project is included on a Regional Recreation Facility's list, the same project cannot be included in a Study Area's prioritized list.

## REGIONAL APPROACH

# Needs of Regional Facilities

## Other Regional Facilities:

- Beaches/Harbors
  - Publicly owned and operated/maintained by a local public agency
- Open Space/Nature Centers
  - Publicly owned and operated/maintained by a local public agency
  - Subject to the Park Preservation Act
- Regional Specialty Facilities
  - Publicly owned and operated/maintained by a local public agency
  - Subject to the Park Preservation Act
  - Operated as its own facility
  - Includes: Arboretums, Specialty Gardens, Aquatic Centers, Equestrian Facilities, Golf Courses, Amphitheaters, Zoos, Sports Complexes



## Needs of Regional Facilities

### Other Regional Facilities Assessment of Need

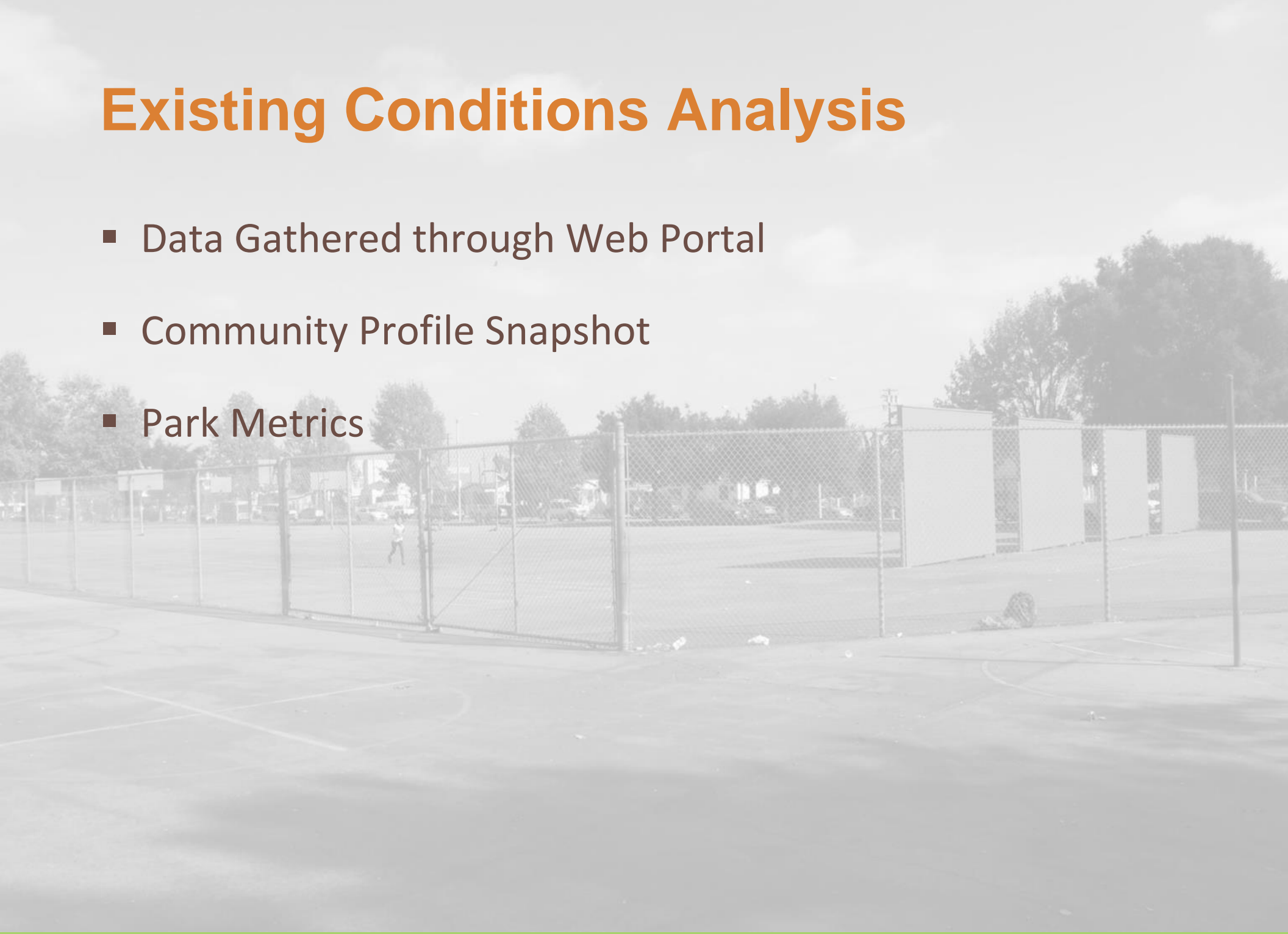
- Agencies will conduct an internal assessment of need for these facilities
- Each agency can submit up to 3 projects per facility, up to a total of 10 regional facility projects per Study Area per agency
- Any project that is included in the addendum cannot be included on a project list within the main body of the Needs Assessment



# Existing Conditions Analysis

# Existing Conditions Analysis

- Data Gathered through Web Portal
- Community Profile Snapshot
- Park Metrics





## EXISTING CONDITIONS ANALYSIS

### Data from Web Portal

- How many parks were added through the Web Portal? **696**
- How many parks are there throughout the County? **3,024**
- How many park acres are within the County? **903,797**
- How many individual amenities were analyzed? **9,000**
- Which amenity is there the most of? **Playgrounds**

## EXISTING CONDITIONS ANALYSIS

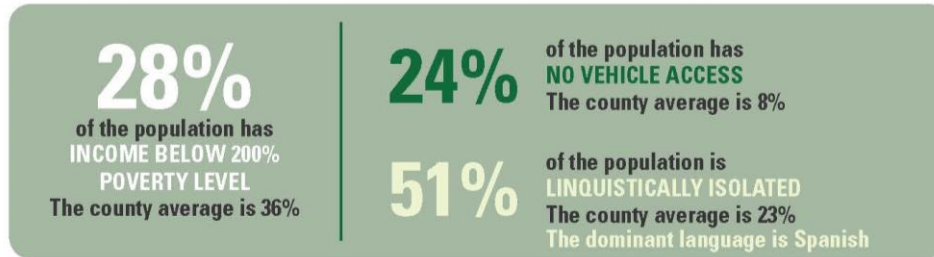
# Community Profile Snapshot

Community Profile Snapshot includes:

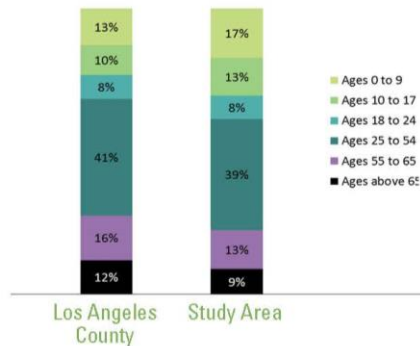
- Population density
- Population distribution by age
- Population distribution by race/ethnicity
- Income level below 200% poverty
- No vehicle access
- Linguistic isolation
- Bike/ped collisions
- Violent crime
- Obesity rate
- Asthma ER visits
- Pollution burden
- Air quality data

# EXISTING CONDITIONS ANALYSIS

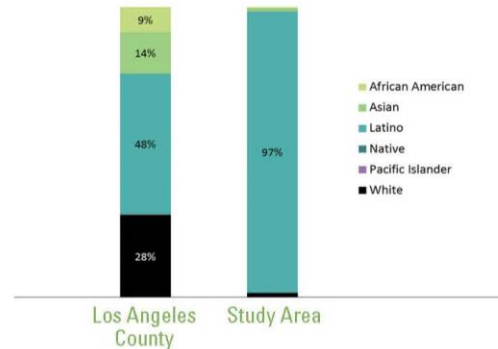
## Community Profile Snapshot



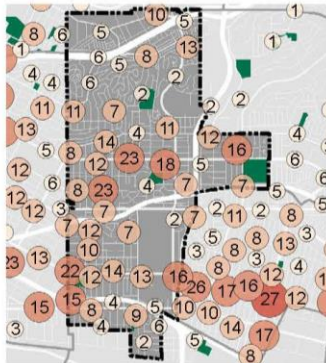
POPULATION DISTRIBUTION BY AGE



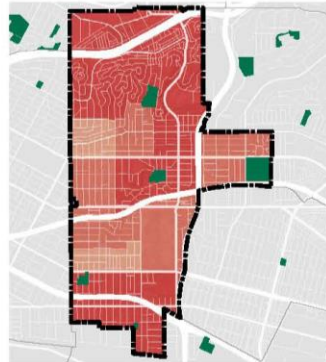
POPULATION DISTRIBUTION BY RACE/ETHNICITY



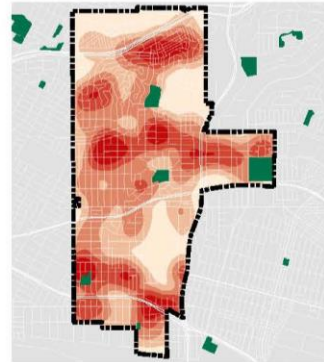
BIKE / PED. COLLISIONS



POLLUTION BURDEN



VIOLENT CRIME



Very Low Low Moderate High Very High



## Key Community Characteristics

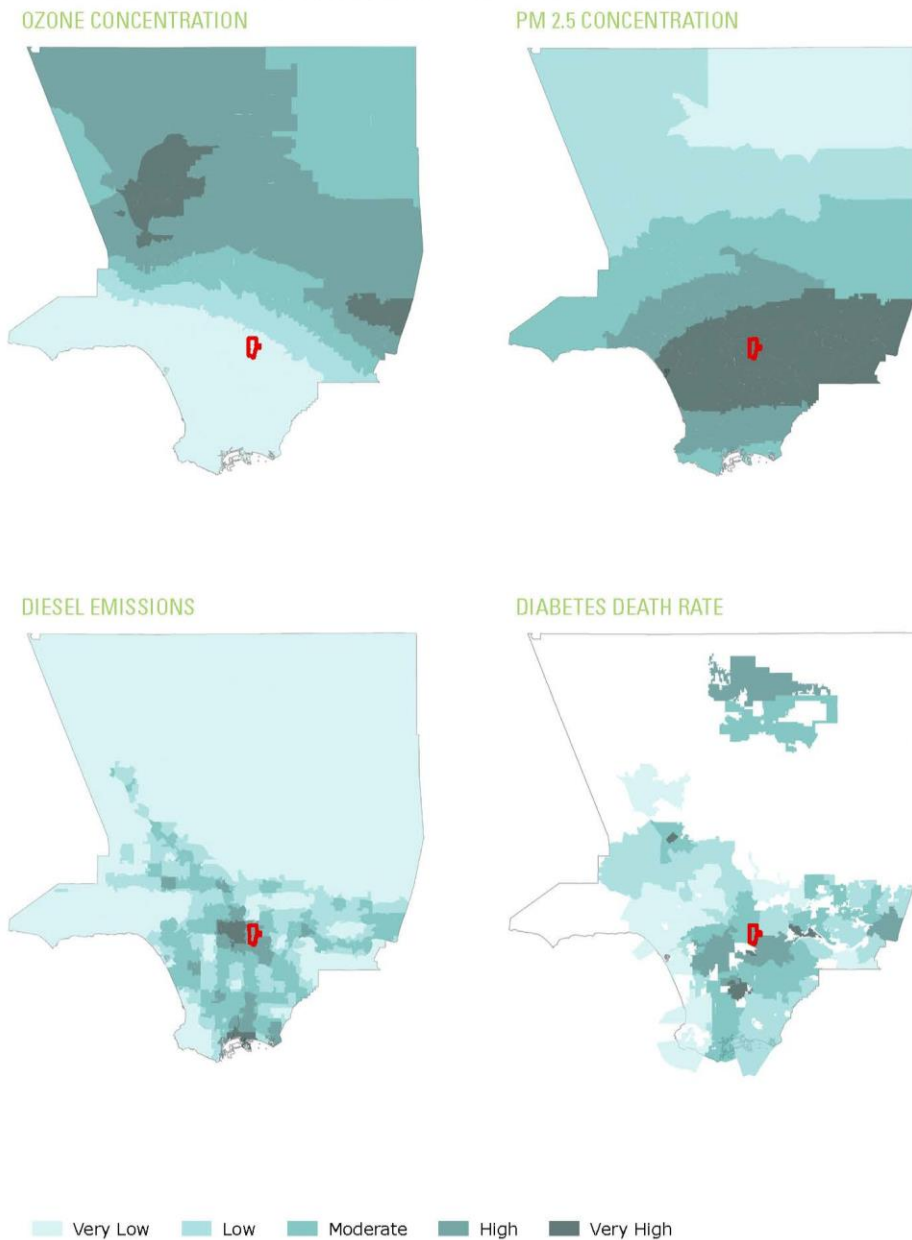
A map of the City of San Francisco with a purple-shaded region indicating the area covered by the proposed ordinance. The shaded area includes the central business district and surrounding urban areas, bounded by a thick black line. The map shows a grid of streets and green spaces.

A map of the City of Chicago with the Loop area highlighted in purple. The map shows the city's grid system and major roads. The highlighted area is located in the central part of the city, near the downtown area.

Very Low Low Moderate High Very High

## EXISTING CONDITIONS ANALYSIS

# Air Quality and Health Data



## Park Metrics

- **Park Metrics used in Analysis of Park Need:**
  - **PARK LAND:** is there enough park land for the population?
  - **PARK ACCESSIBILITY:** is park land located within a half mile radius of residents?
  - **PARK USER DENSITY (PARK PRESSURE):** how much park land is available to the residents in the area around each park?
  - **PARK AMENITIES:** what amenities are available within the Study Area?
  - **PARK CONDITION:** is the park in good, fair, or poor condition?



## EXISTING CONDITIONS ANALYSIS

# Park Metrics

**PARK LAND:** Is there enough park land for the population?

70

PARK ACRES  
within study area

68,998  
POPULATION

**PARK ACCESSIBILITY:** Is  
park land located where  
everyone can access it?

57%

population living  
WITHIN 1/2 MILE  
of a park

The county average is X% of the population living  
within 1/2 mile of a park

### PARK PRESSURE

How much park land is available to  
residents in the area around each park?

#### City Terrace Park

0.8 park acres per 1,000

#### Eugene A. Obregon Park

0.6 acres per 1,000

#### Ruben F. Salazar Park

0.3 acres per 1,000

#### Parque de los Sueños

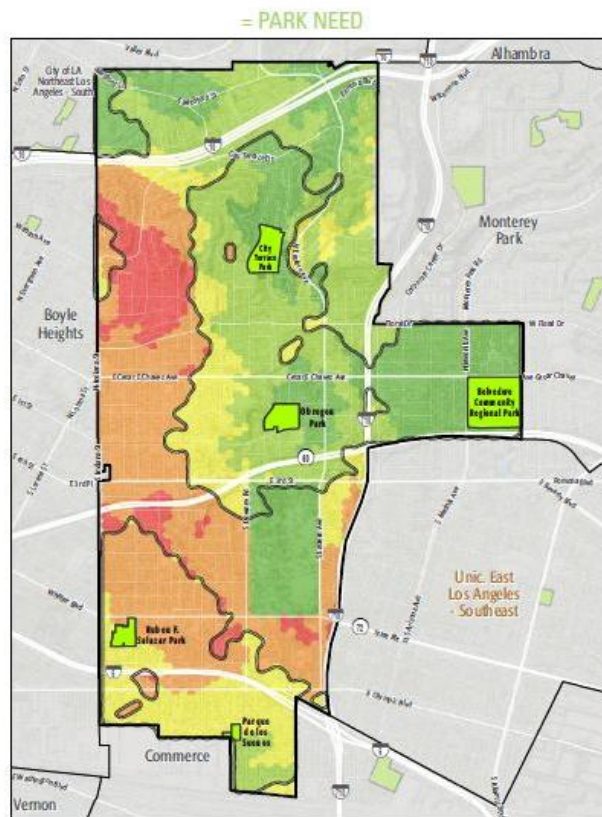
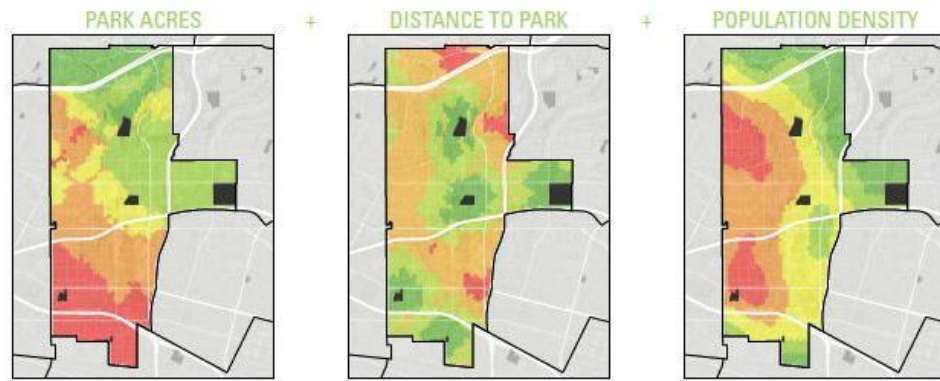
0.2 acres per 1,000

#### Belvedere Community Regional Park

3.0 acres per 1,000

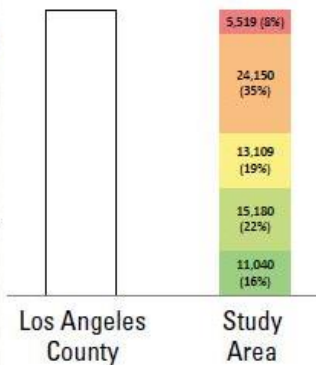
## EXISTING CONDITIONS ANALYSIS

# Park Need



### HOW MANY PEOPLE NEED PARKS?

Park Acres + Distance to Park + Population Density = Park Need



### PARK NEED CATEGORY

- Very High
- High
- Moderate
- Low
- Very Low

○ Area within 1/2 mile of a park

# Materials and Translation

- These three pages will be made available electronically to the Steering Committee and the public for all study areas
- Will also be printed in English in poster size for the workshop.
- Translations will be available in Spanish, Chinese, Korean and Armenian.
- Languages selected because at least 15% of the population in at least one study area speaks English “less than well” and speaks this language.

## EXISTING CONDITIONS ANALYSIS

# Amenity Conditions

Park Name	Condition	General Infrastructure Condition	Tennis Courts	Basketball Courts	Baseball Fields	Soccer Fields	Multipurpose Field	Skate Parks	Fitness Zone	Picnic Shelters	Playgrounds	Swimming Pools	Splash Pads	Dog Parks	Gymnasium	Community/Rec Centers	Senior Centers	Restrooms	Open Lawn/ Turf Area	Total
City Terrace Park	Good									1	2				1					4
	Fair		1	1	2		1					1	1			1				8
	Poor																	1		1
Eugene A. Obregon Park	Good			1											1					2
	Fair				2		2		1	1	2	1				1		1		11
	Poor																			0
Ruben F Salazar Park	Good		2								1							2		5
	Fair			1	2				1	1		1			1	1	1			9
	Poor																			0
Parque de los Suenos	Good																			0
	Fair			1						1	3							1		6
	Poor																			0
Belvedere Community Regional Park	Good			2								3	1							6
	Fair		2		3			1	1	4	1					1				13
	Poor					2									1			2		5
Total:	Good		2	3	0	0	0	0	0	1	3	3	1	0	2	0	0	2	0	17
	Fair		3	3	9	0	3	1	3	7	6	3	1	0	1	4	1	2	0	47
	Poor		0	0	0	2	0	0	0	0	0	0	0	0	1	0	0	3	0	6

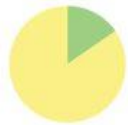
Miles of trails inside parks: 0

Miles of trails outside of parks: 0

### AMENITY CONDITIONS SUMMARY



City Terrace Park



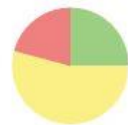
Eugene A. Obregon Park



Ruben F. Salazar Park



Parque de los Sueños



Belvedere Community Regional Park

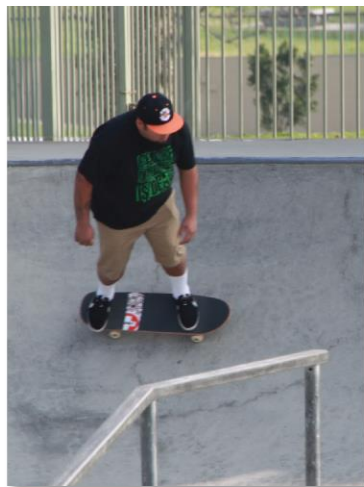


# Future Steps and Meetings

- Health Equity Workshops on November 3, November 9 and November 14
- Facilitator trainings on November 16, 17 and 18.
- Toolkits will be available to meeting facilitators on or before December 1
- Base map, park metrics and park needs maps will be available for download from the website on or before December 1
- Attend community meetings – check website for meeting dates and locations
- Next Steering Committee Meeting is on **March 24, 2015**
  - Review of Prioritized Project Lists

we all need  
**PARKS**  
for healthy, thriving and engaged communities

## Steering Committee Meeting #5 October 29, 2015



LOS ANGELES COUNTYWIDE COMPREHENSIVE  
PARK & RECREATION NEEDS ASSESSMENT